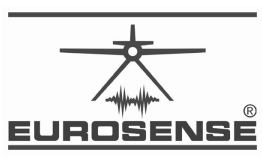




P/RESIDENTIAL RESIDENCE
Presidential Villa on Slavín Hill in Bratislava

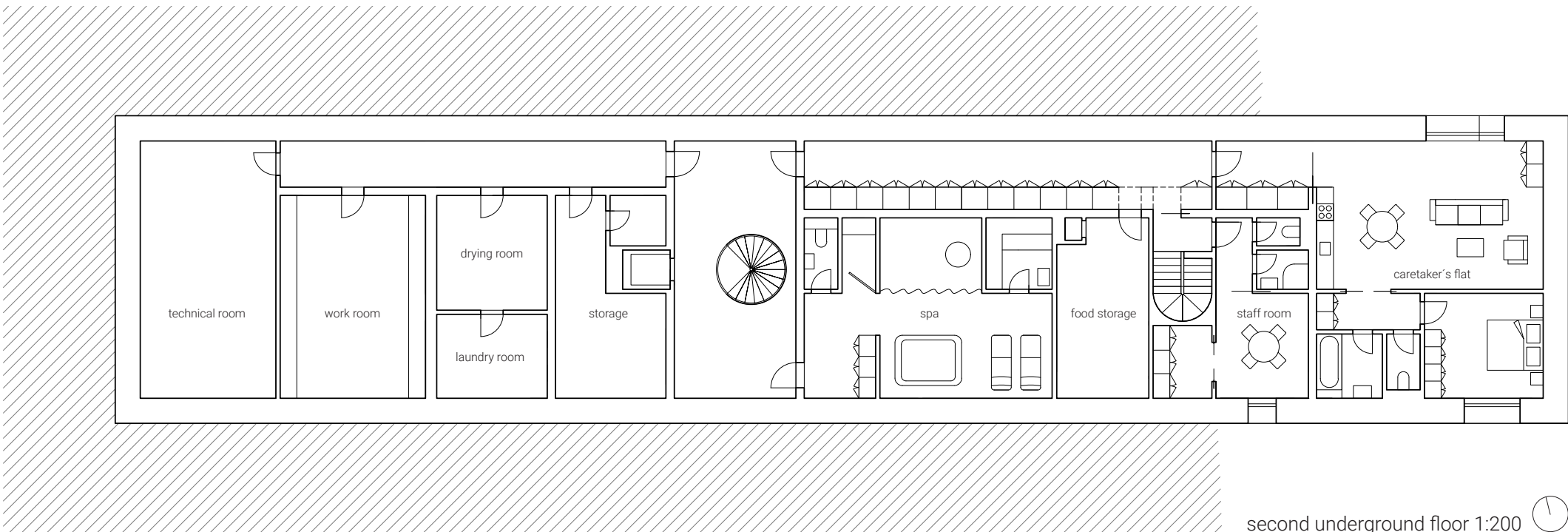
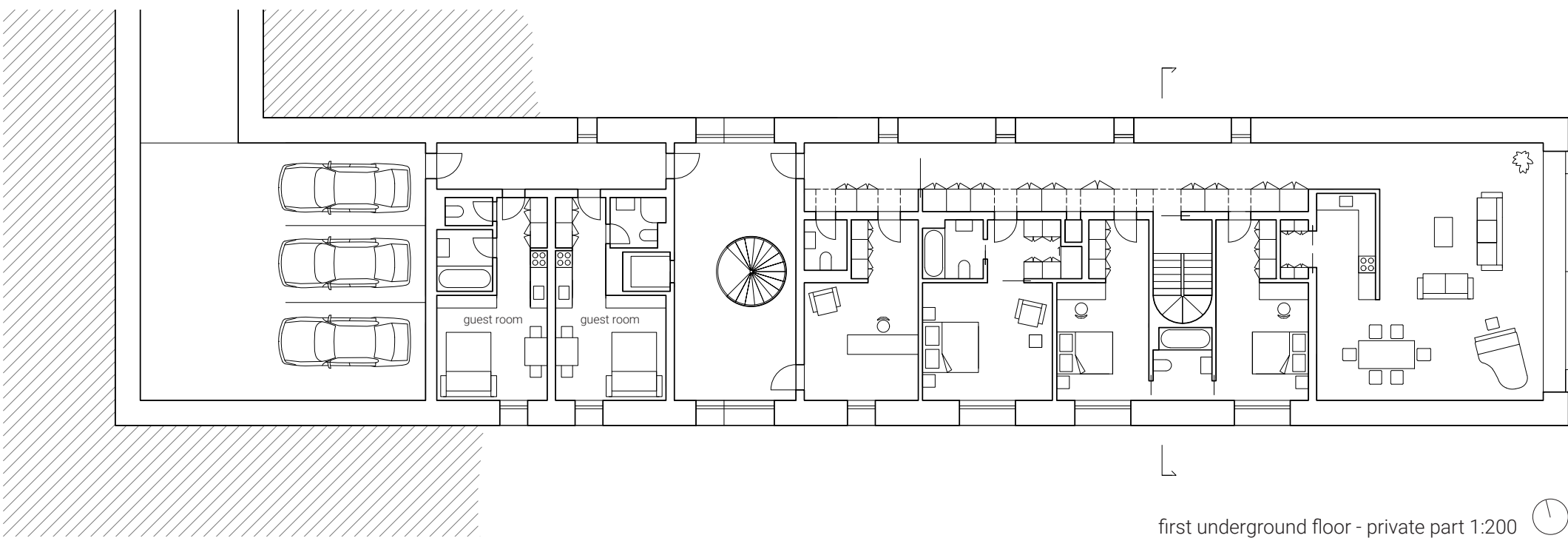
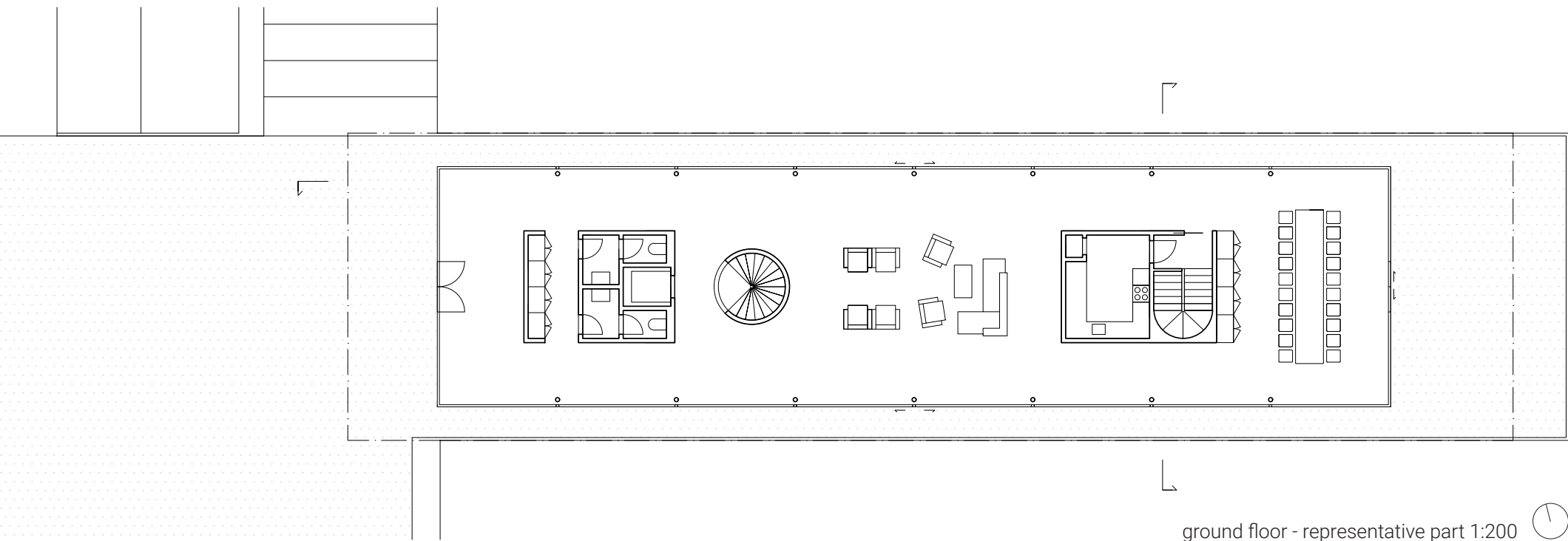
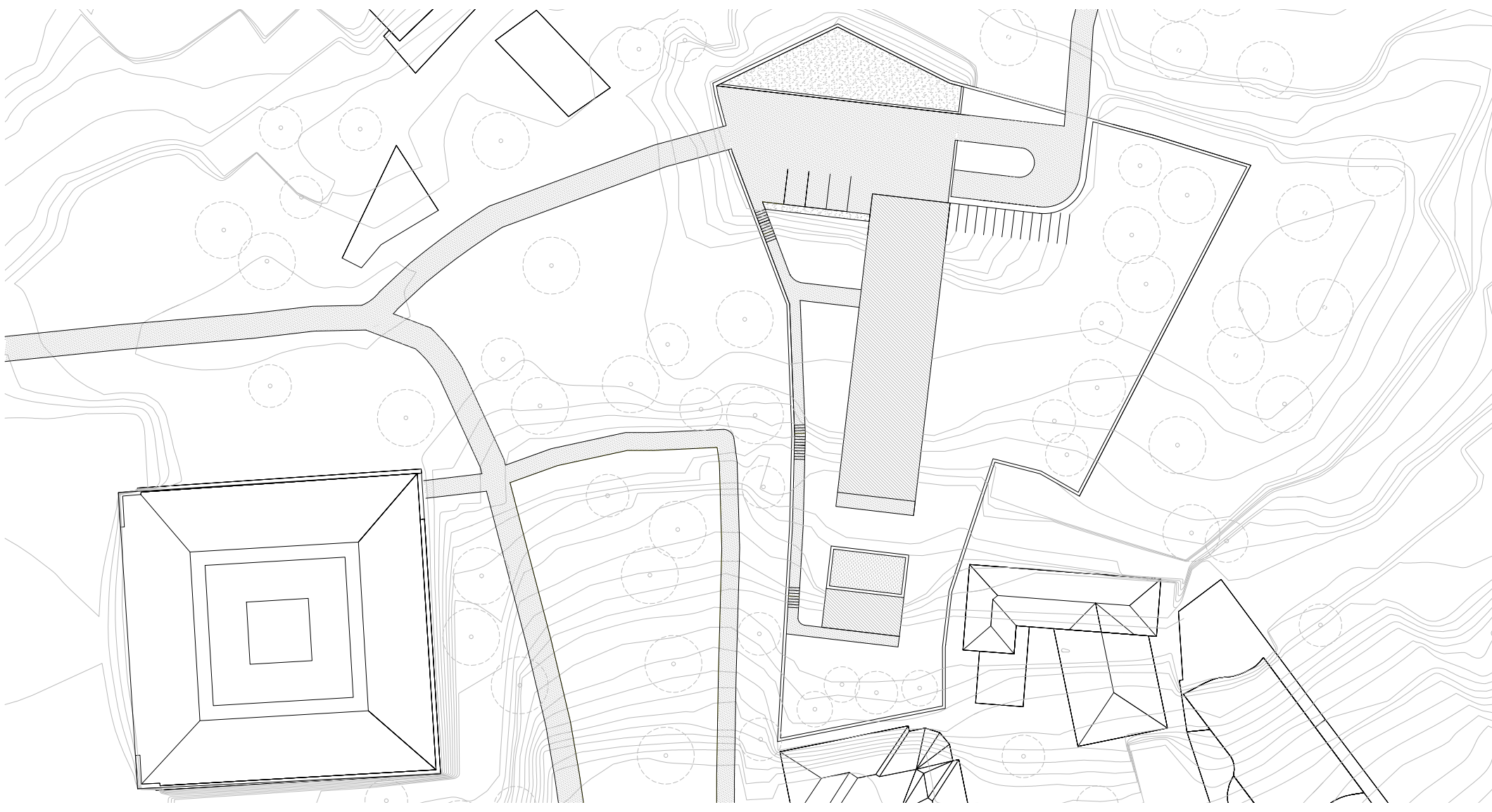


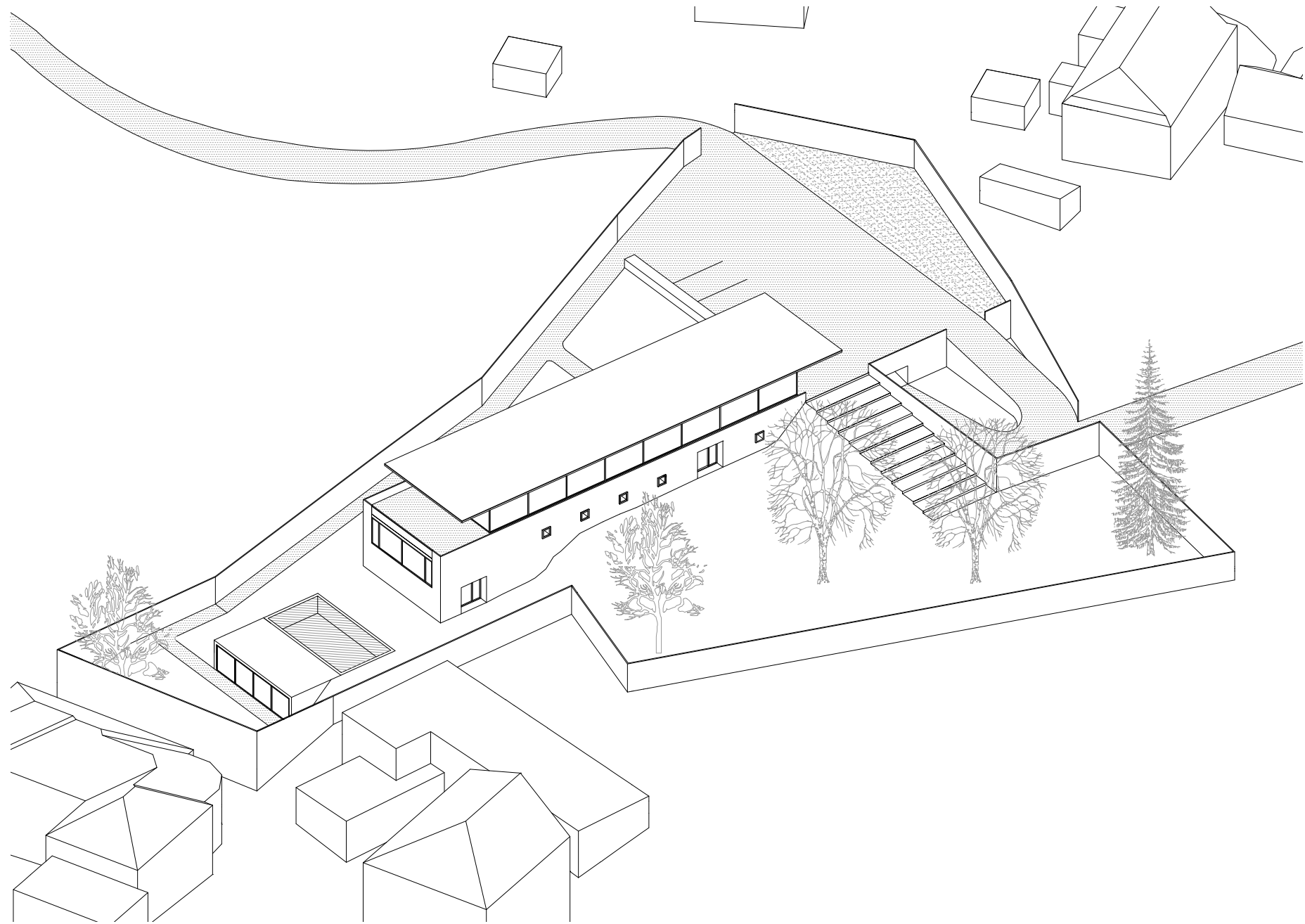
THE LAND

The land is situated in Bratislava, the capital of Slovakia, with an orientation to the east and to the west. It is located on the hillside, near to the memorial monument Slavín, where the view allows to watch the whole city from. The land is surrounded by trees and the nature, which creates a pleasing place to live. The main entrance to the land is from the south part, on the most elevated place of the land, from the street Pažická. There is a paved surface in front of the house which creates the main entrance place to the building and some parking places for President's visits. Under this area, there is a private underground garage for President, where the ramp from the entrance place leads to. The land is dipping to the east. There is a path, which follows the wall, and it leads from the paved surface in front of the building to the private part of the villa. The northern garden is mainly for the visitors. There are wide stairs in the surface which lead to it. There is no paved surface, just the well-tended grass, where the summer tea party will take place. Some trees will be planted near to the northern wall. This non-transparent high wall, which is three meters high, leads around the whole land to provide the president's safety.

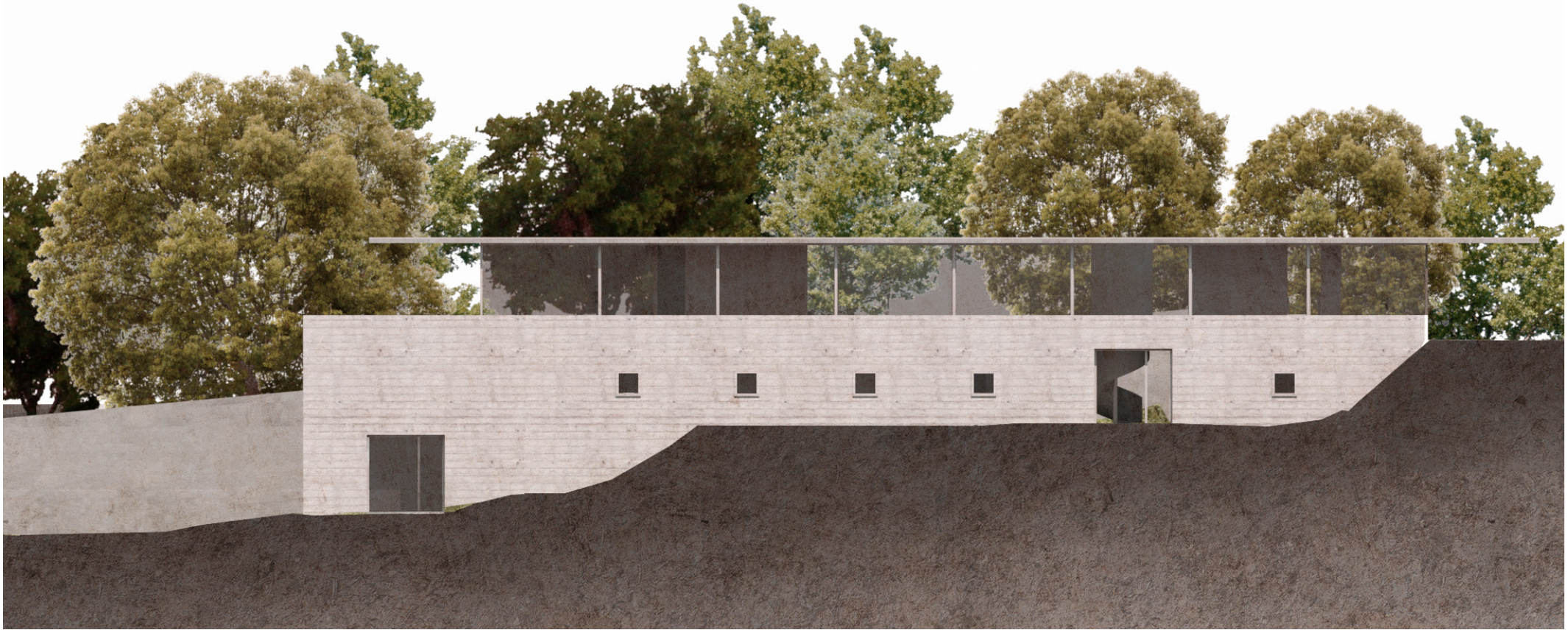
THE BUILDING

The presidential villa reacts to the sloping surface. Long narrow mass is split into two horizontal parts which are in contrast. Lower concrete platform raises from the ground and is built in the slope. Thick walls with small windows create the impression of a safe refuge, which a head of the country needs. In the plinth of the building, there is a private housing of president, utility and staff rooms. Presidential part - the rooms are lined up in the strict order and are accessible from the long corridor. From the bedrooms, it is possible to go directly to the southern private garden. In the lower part of the garden, there is a swimming pool and the shed which is embedded in the ground. The corridor ends with a spacious living room with the panoramic view to the New Town of Bratislava. On the solid base, there is delicate, light and well-arranged box, which creates a contrast between these two parts. The president will represent herself with this space which is very opened and allows views to all the directions. The disposition of this floor is much more opened in comparison with lower platform. At the end of the mass, there is a large dining room for 20 guests. There is also a terrace which borders the whole glass box.

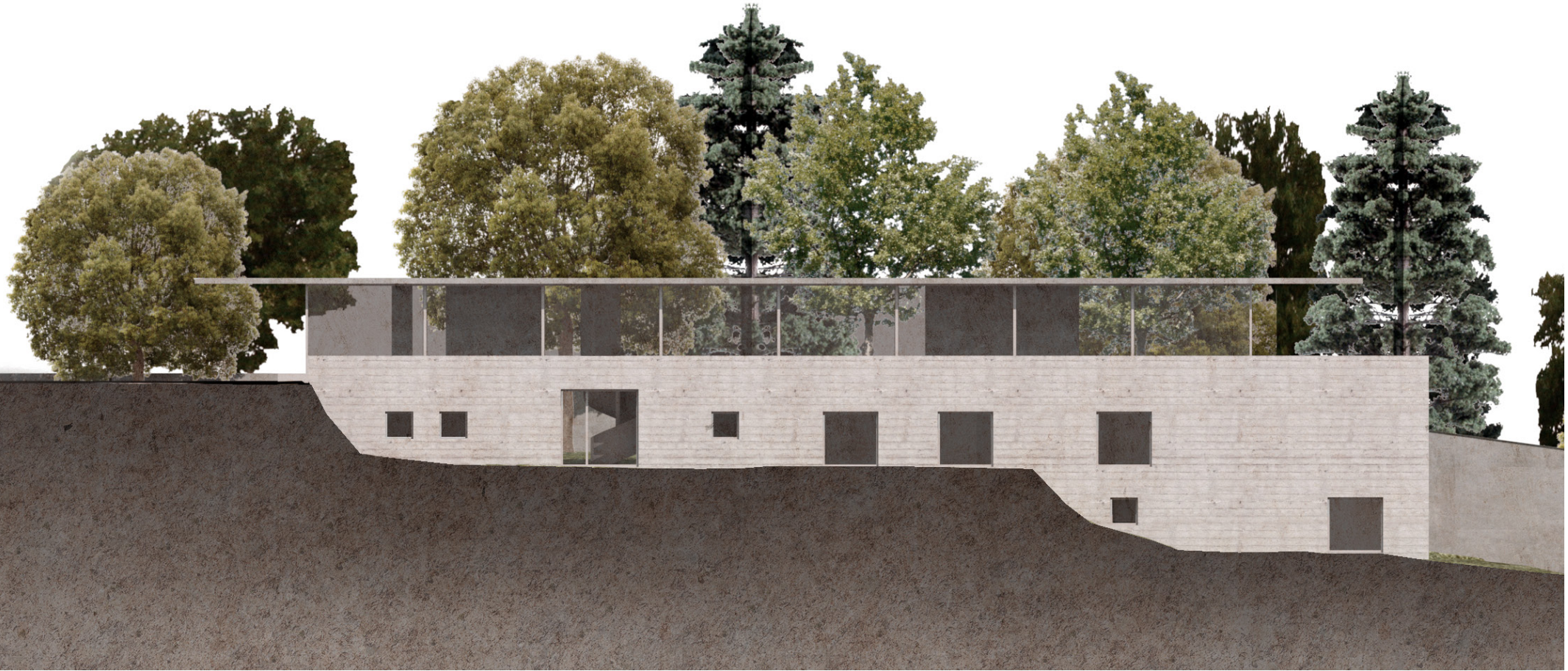




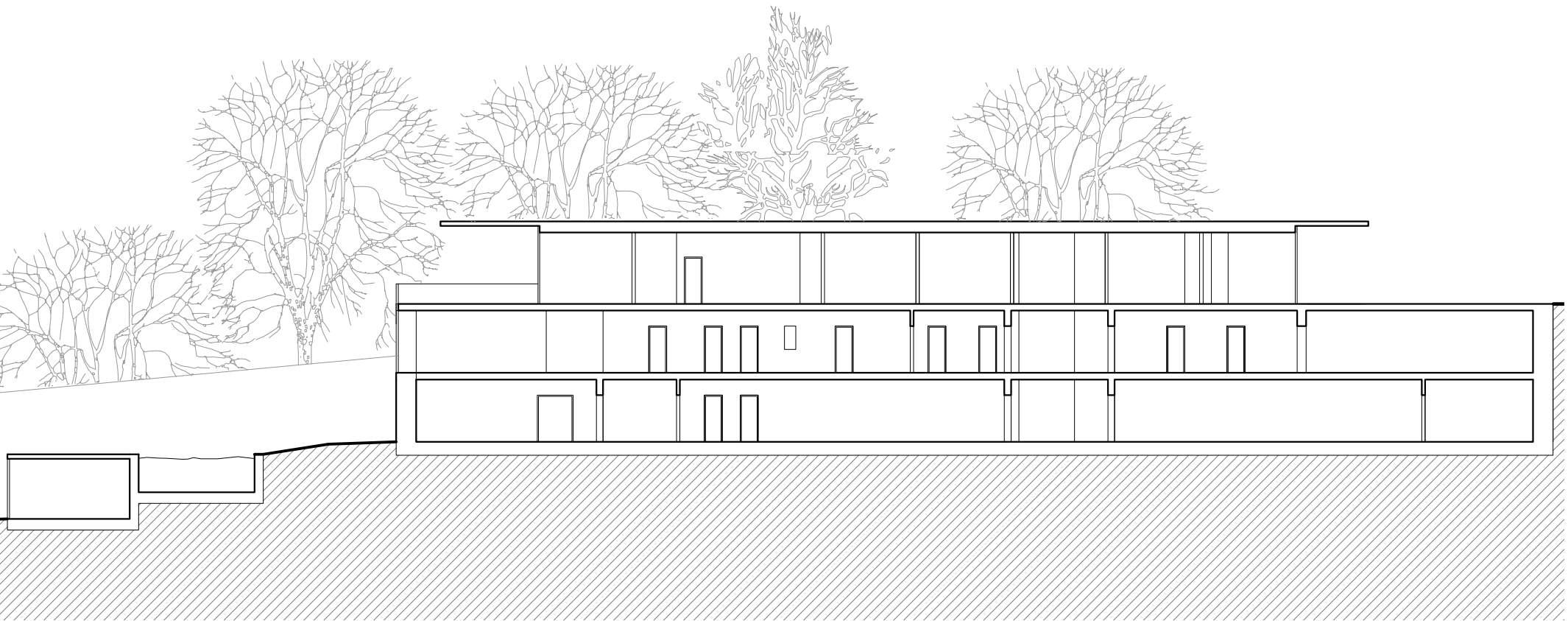
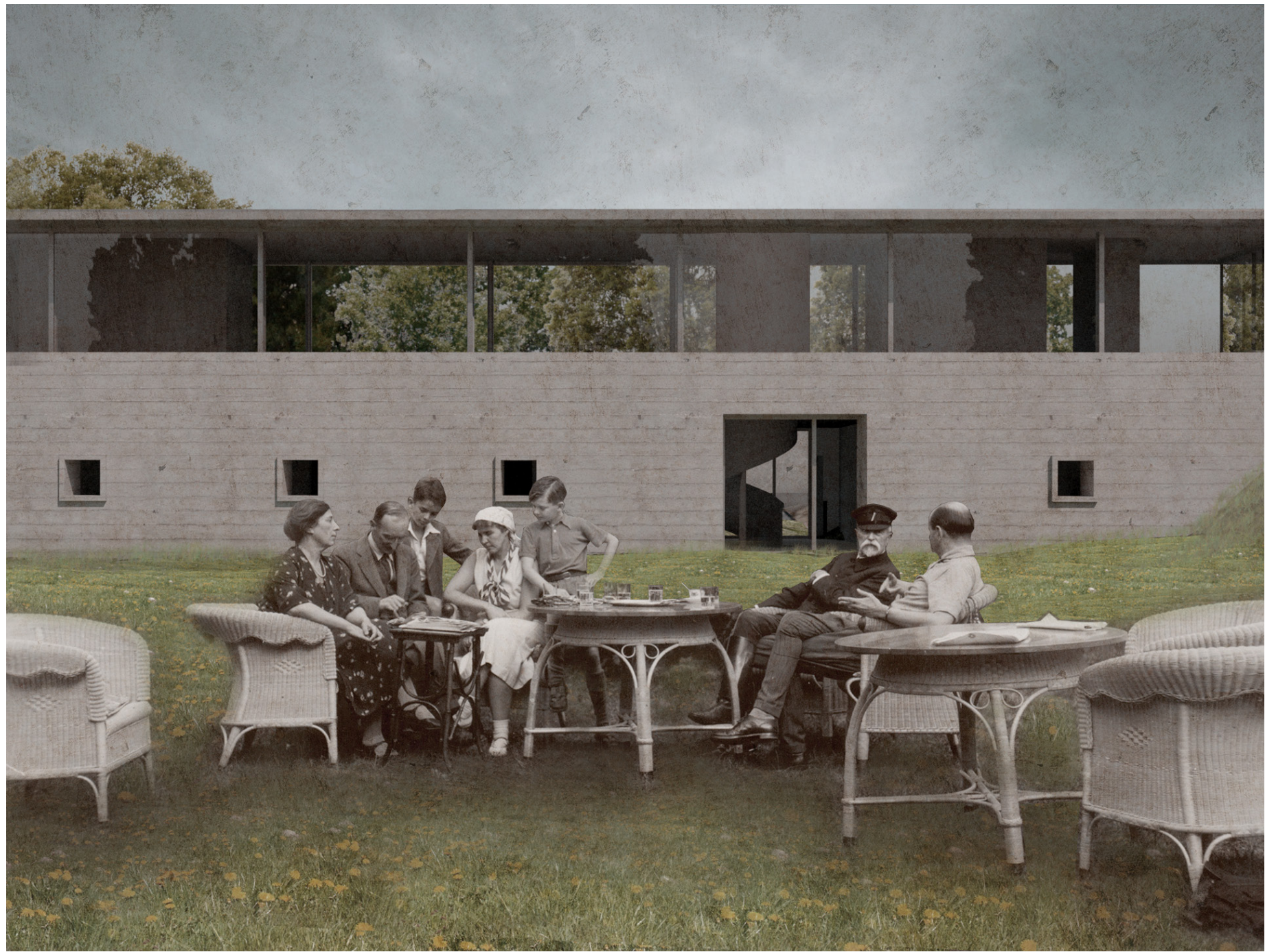
data - © Eurosense 2019



north view 1:200



south view 1:200



longitudinal section 1:250