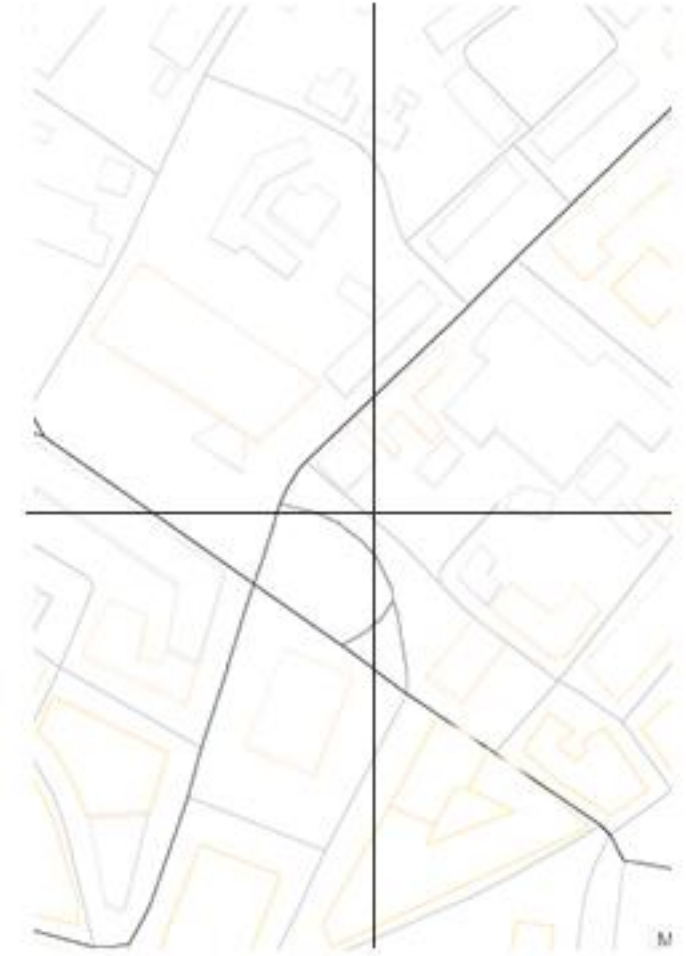
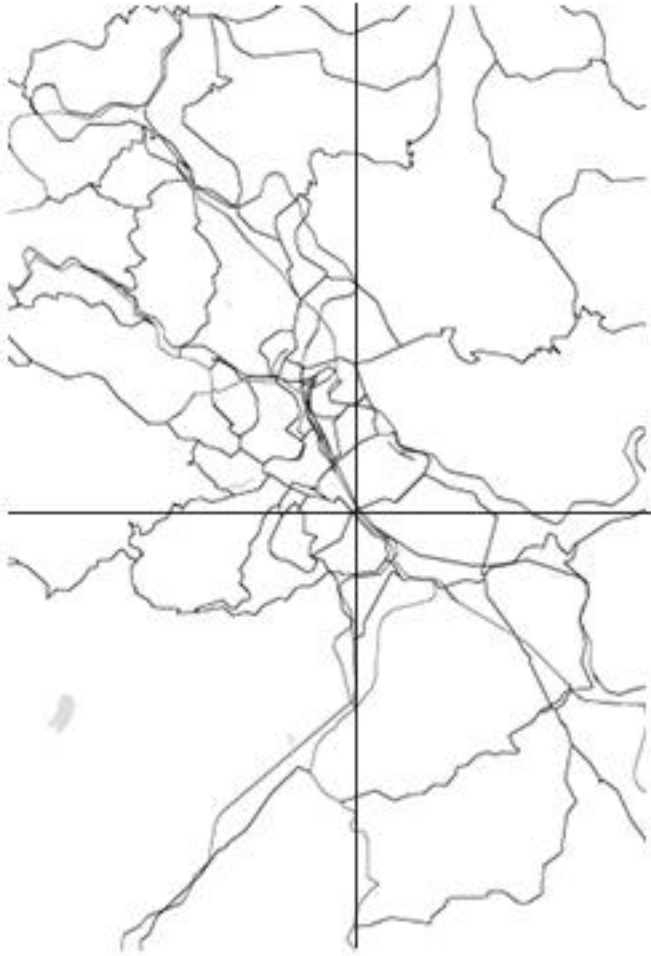




CULTURE APPROACHING EVERYONE

andonegui cuellar paola



SITE LOCATION

the site is located in liberec, czech republic

Liberec is a city with a long and glorious history. In the 18th century it became the largest manufacturing city in the Kingdom of Bohemia. Today, it is a lively city and a great starting point for day trips to the beautiful Jizera Mountains and their observation towers, or in the winter to its popular ski resorts.

liberec town hall



new project



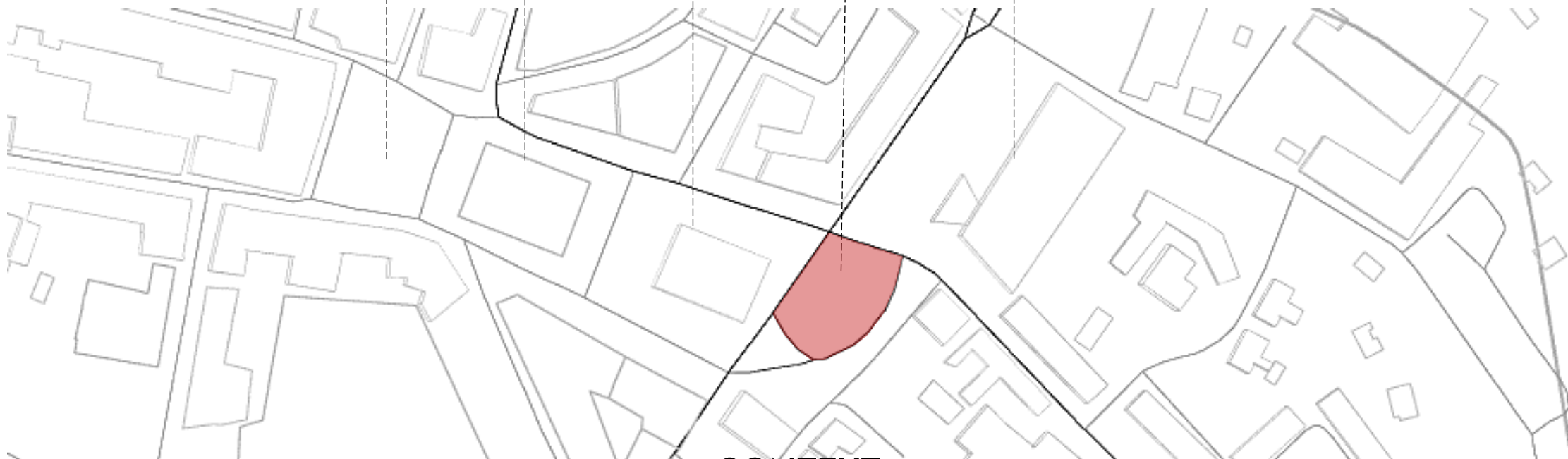
fountain of
neptune



f.x. šalda theater



regional
scientific library



CONTEXT



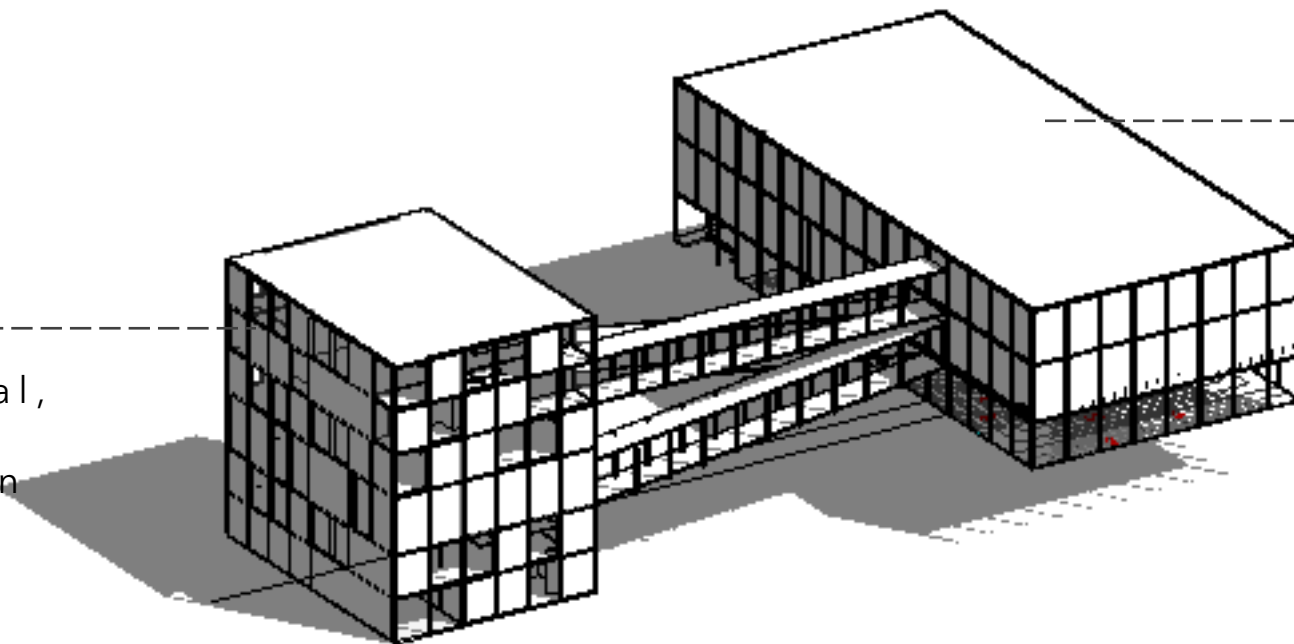
SITE VIEWS



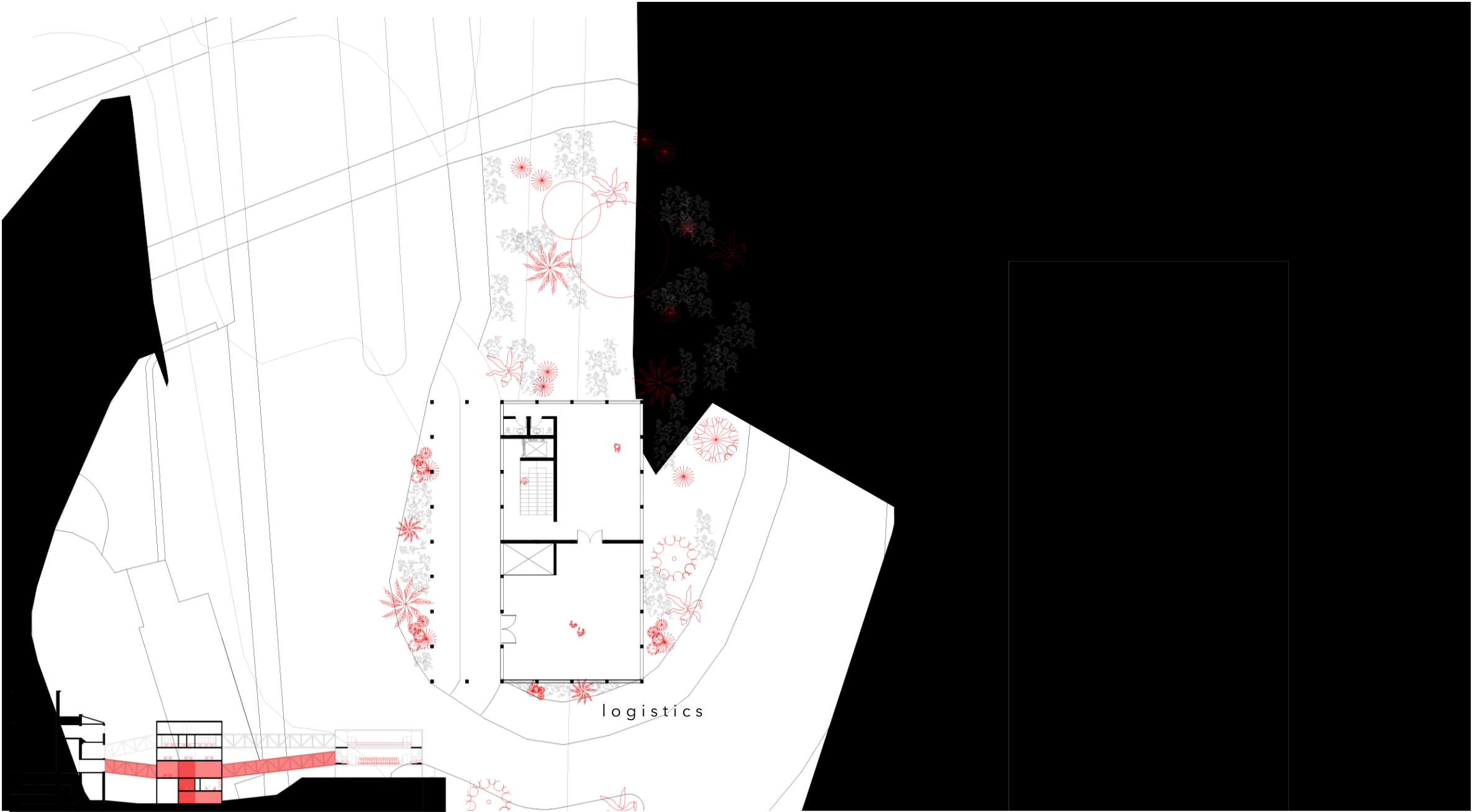
ART IN EVERYONE'S EYES

A building that will allow you to see what is
going on inside as well as outside.
Expecting people to be curious and attract
them into the world of performance.

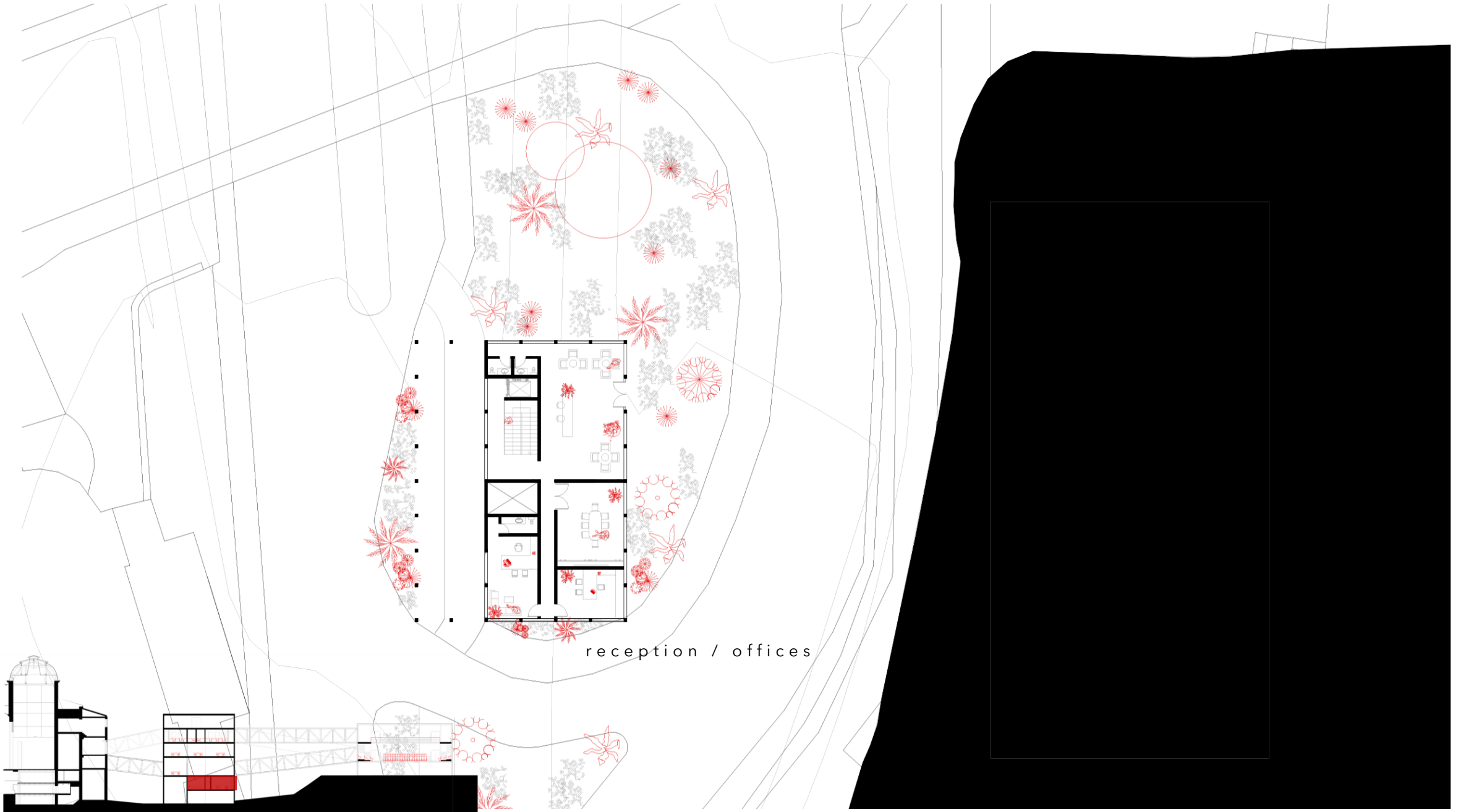
PRIVATE -----
where rehearsal,
workshops,
logistics happen

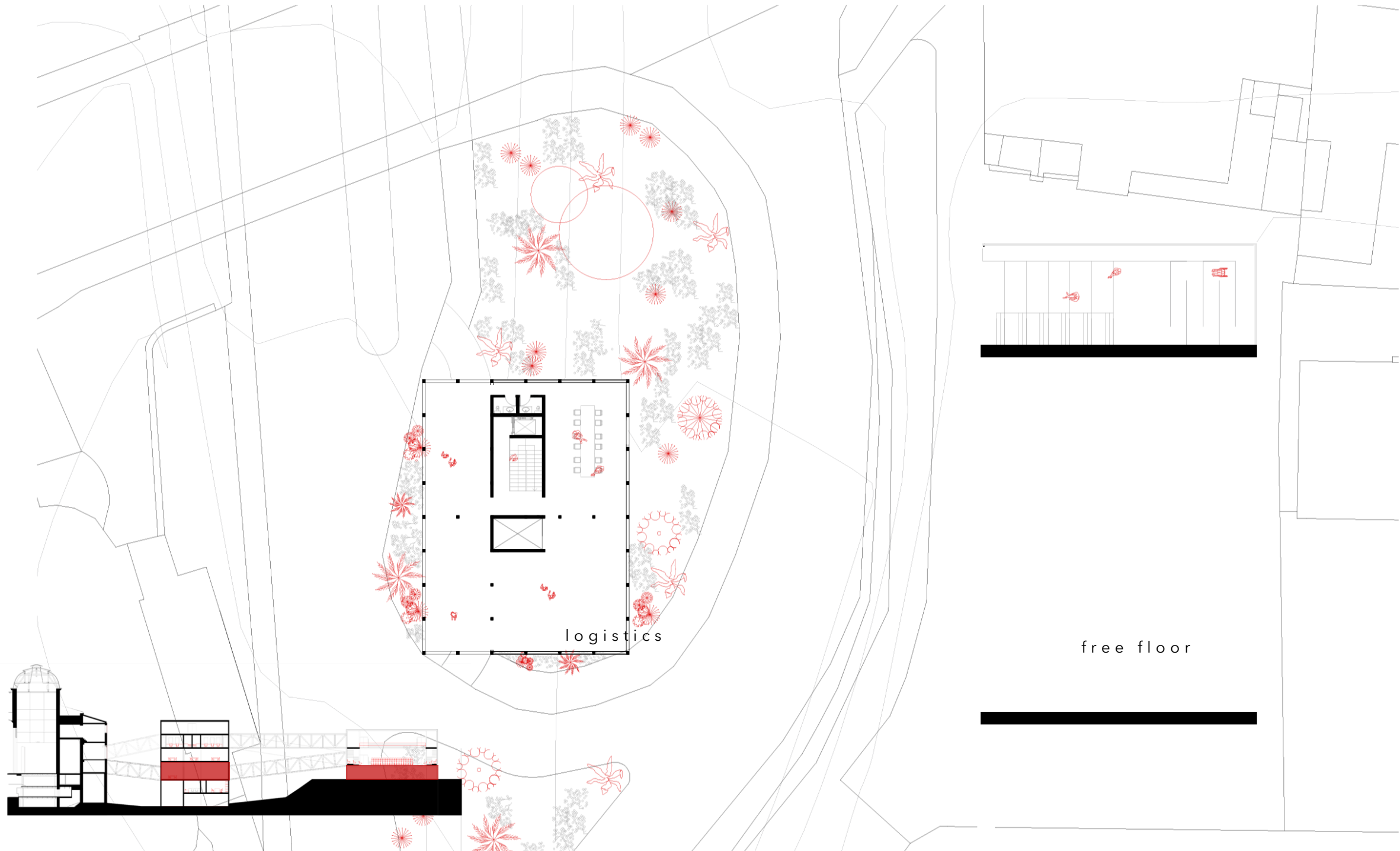


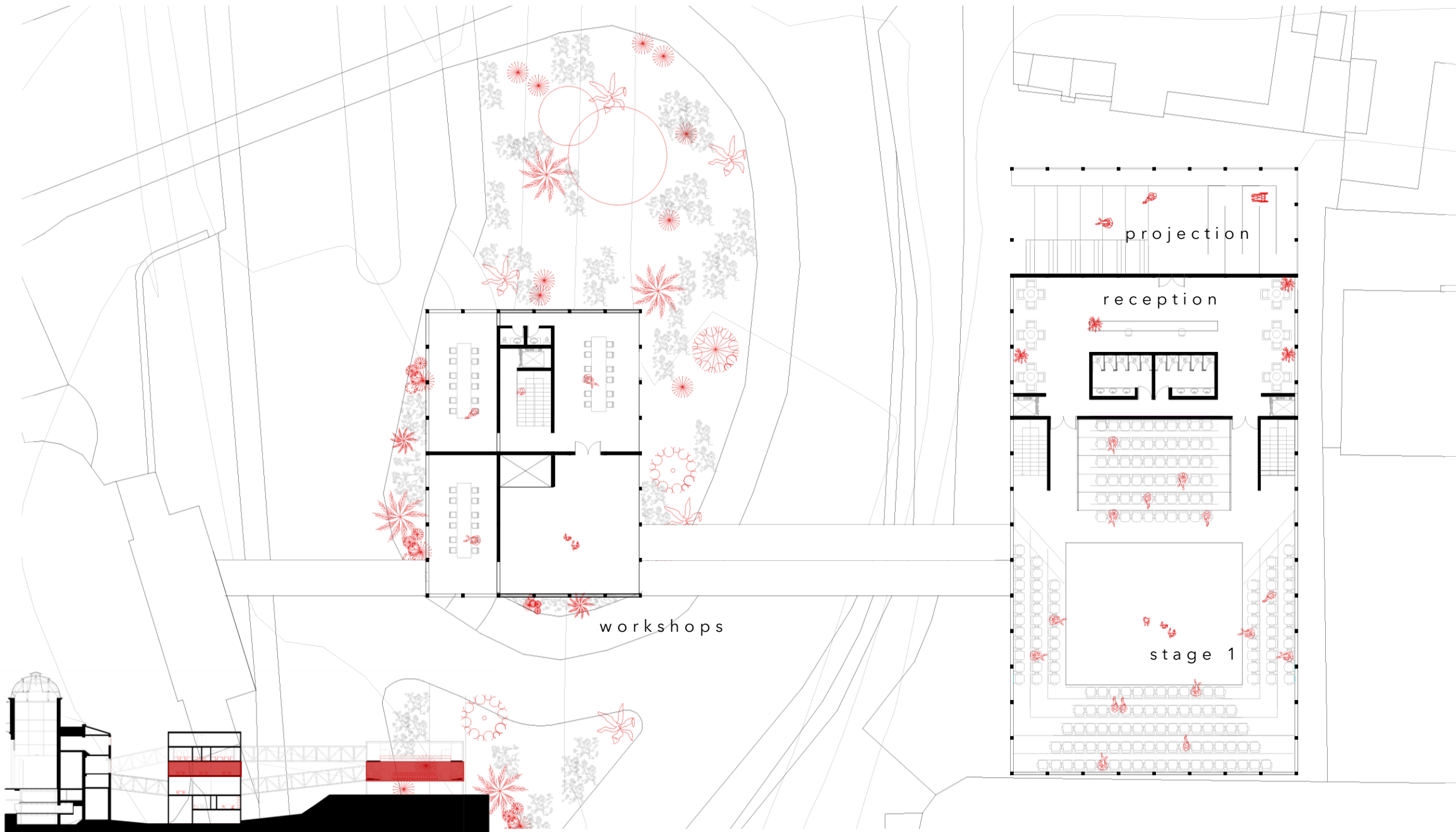
PUBLIC
where
performance
happens

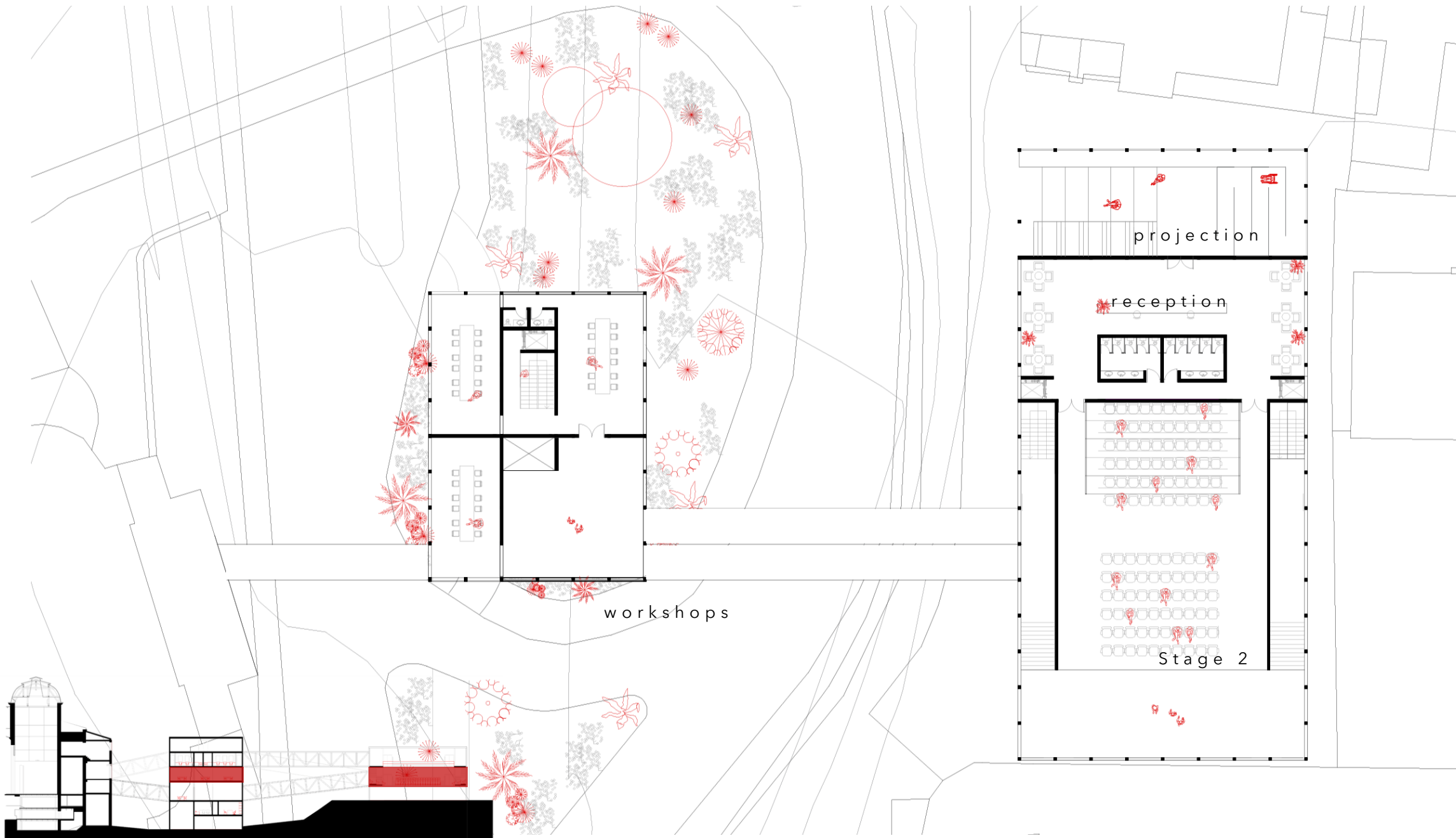


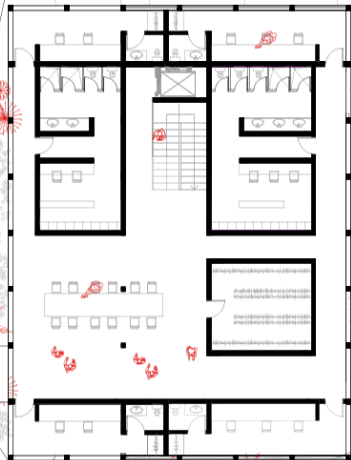
logistics



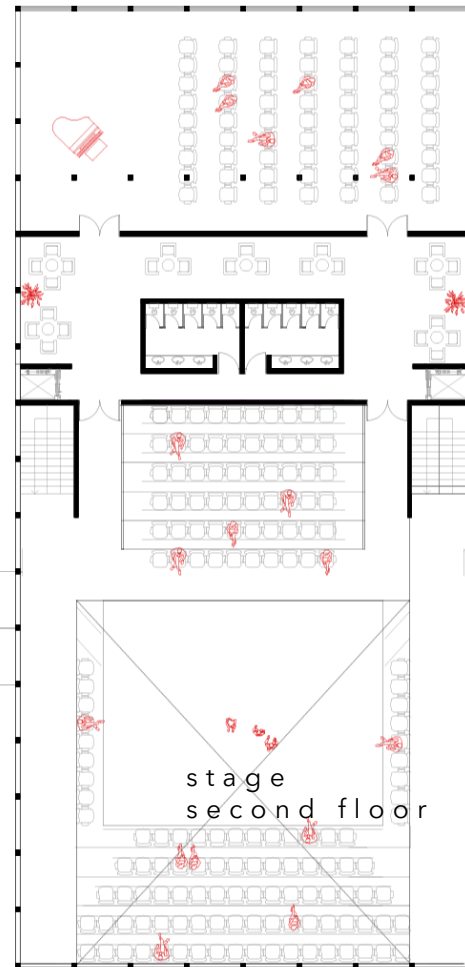




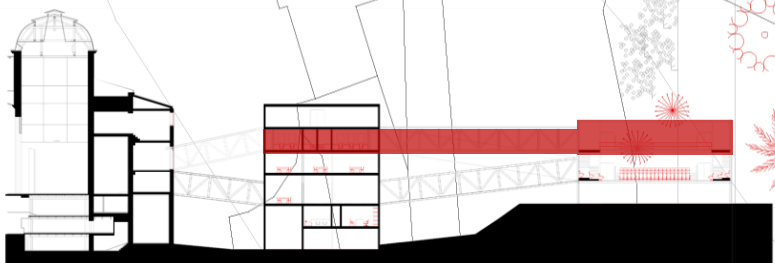




dressing rooms

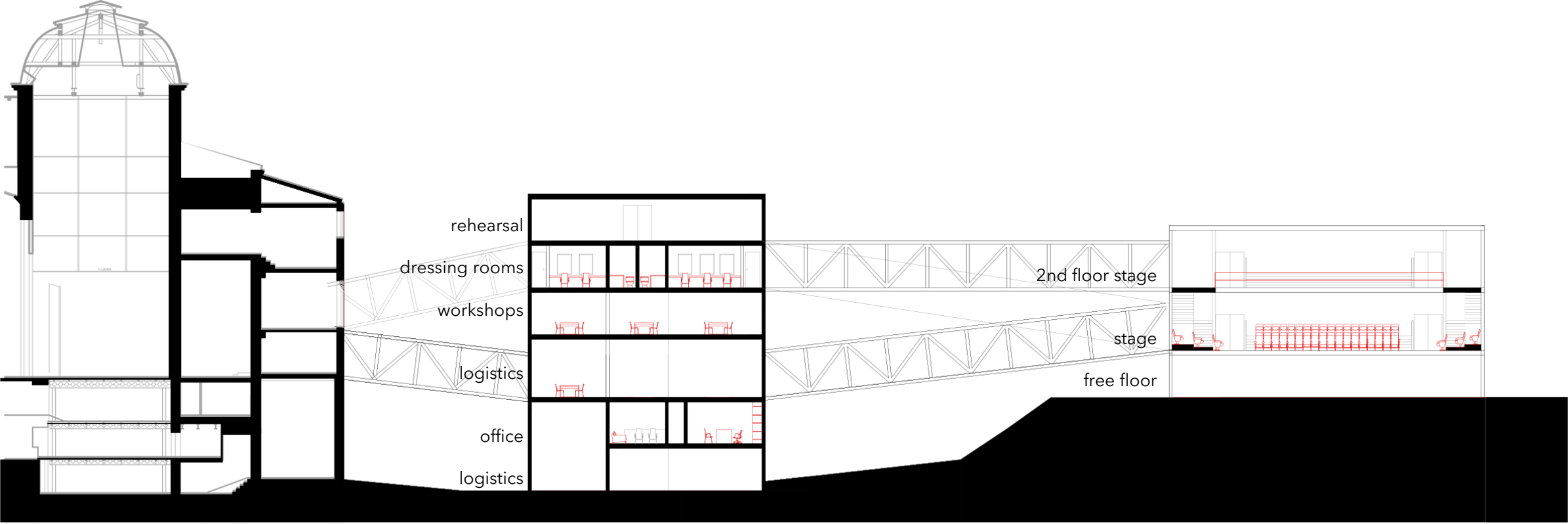


stage
second floor

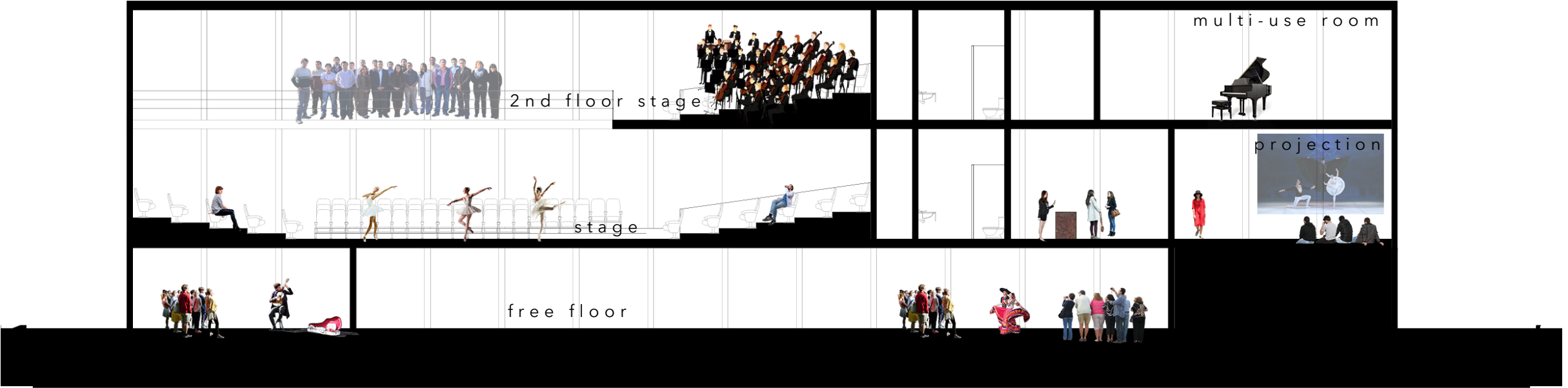




SECTION



SECTION

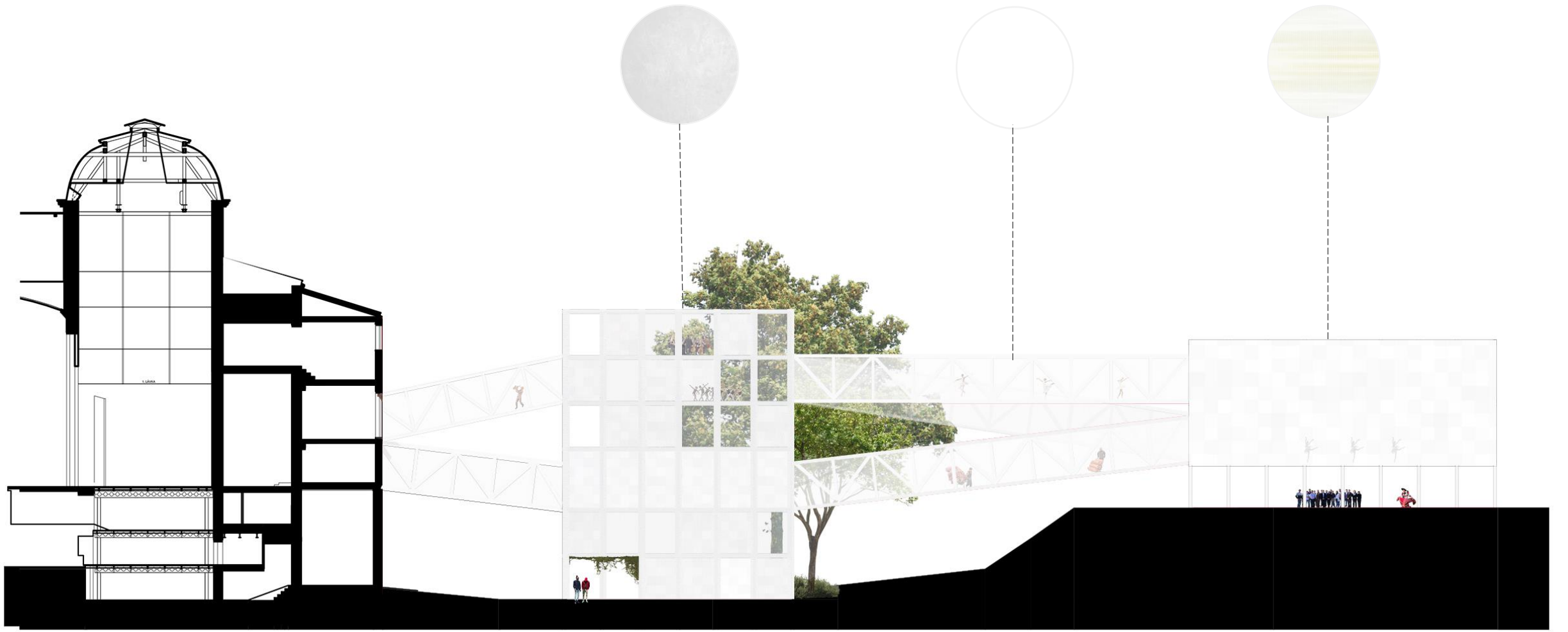


FACADE

white concrete

white steel

translucent
polycarbonate sheets
with LED lights



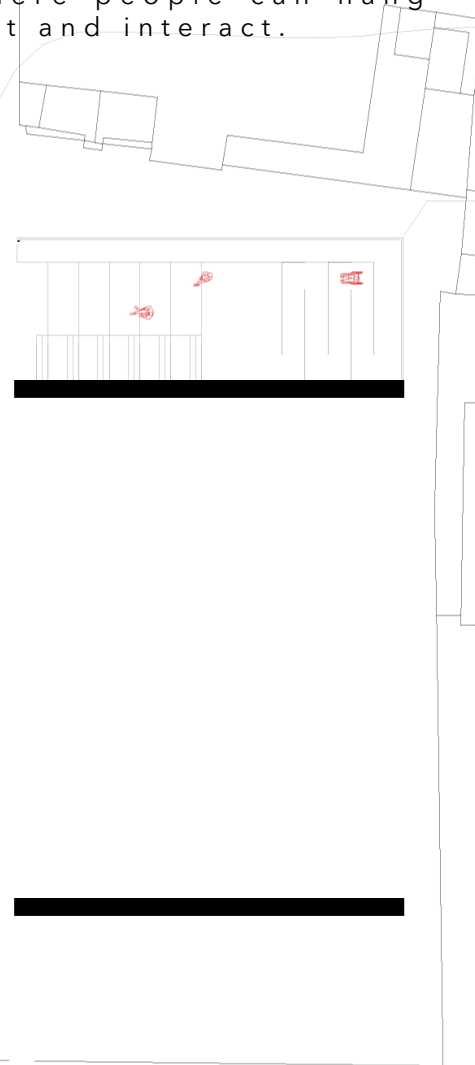
FACADE





ENTRANCE

The entrance of the performance building seeks to be a space where people can hang out and interact.





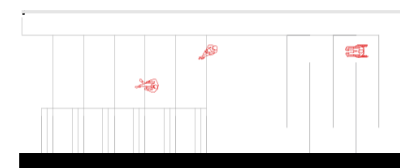
NEW ARTIST

The free floor is a space where new artist can perform. Creating a friendly atmosphere around music and dances.



PROJECTIONS

The stairs that go up to the first floor of the performance building works like a space for projections and where people can sit and chill.





STAGE

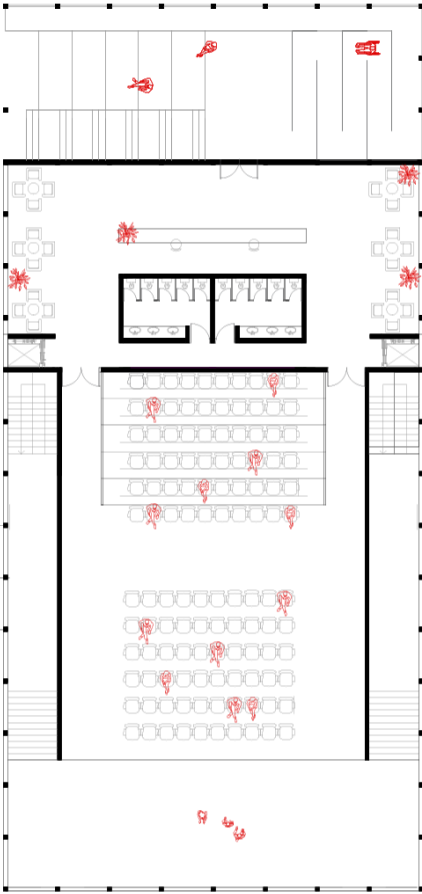
The stage works as a multi-purpose space, where the stage can be adapted in different ways.

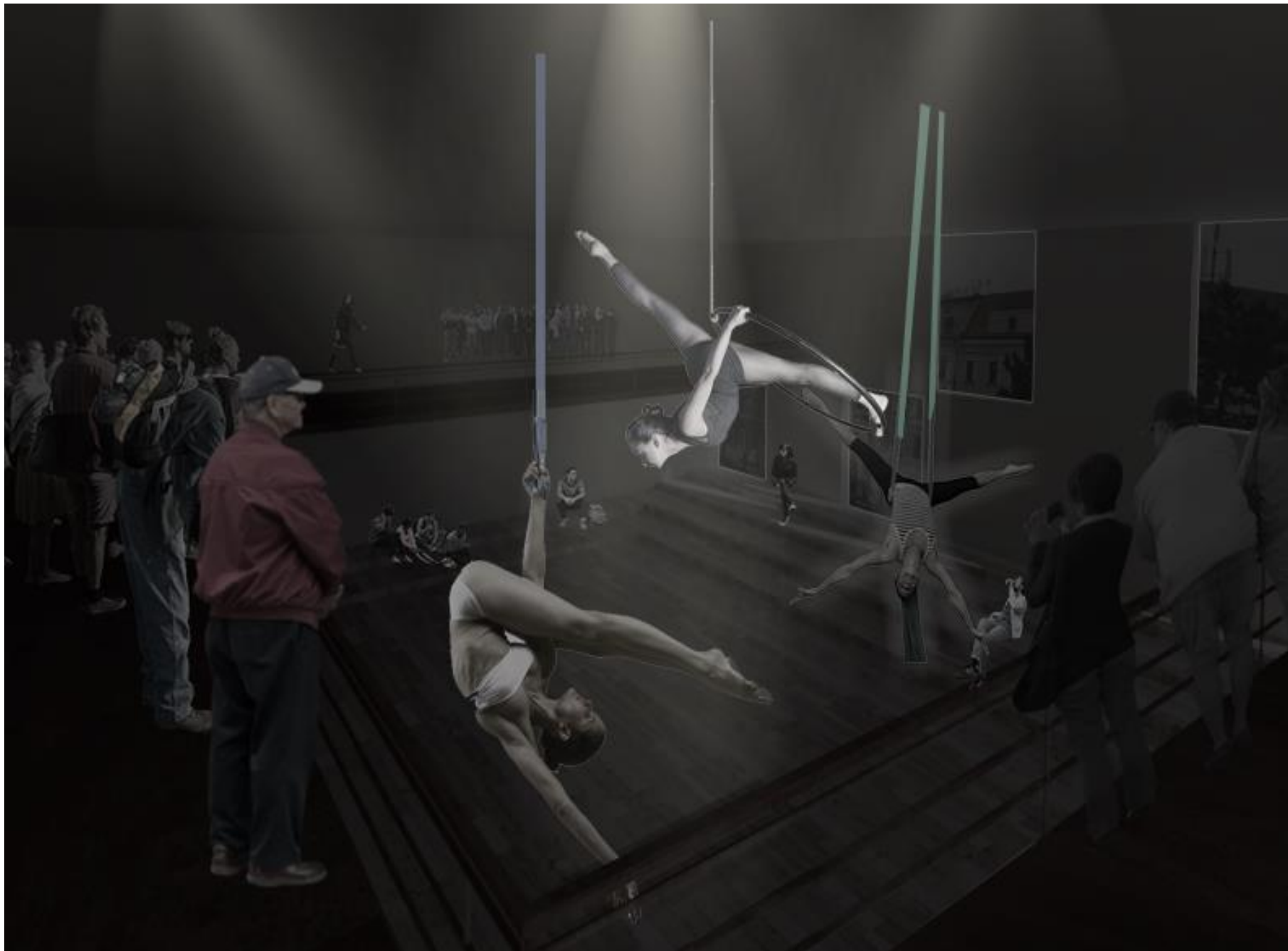




STAGE

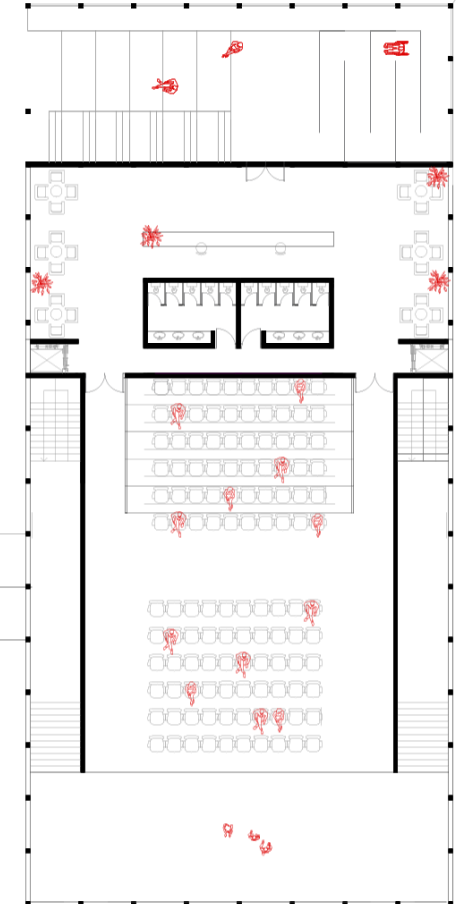
The stage works as a multi-purpose space, where the stage can be adapted in different ways.





STAGE 2ND FLOOR

In the second floor of the stage people can see the scenario in a different point of view.





REHEARSAL

The rehearsal rooms have great views of the city because they are in the upper floor of the administrative building..



AT NIGHT

The LED lights facade
create a different
atmosphere at night.

