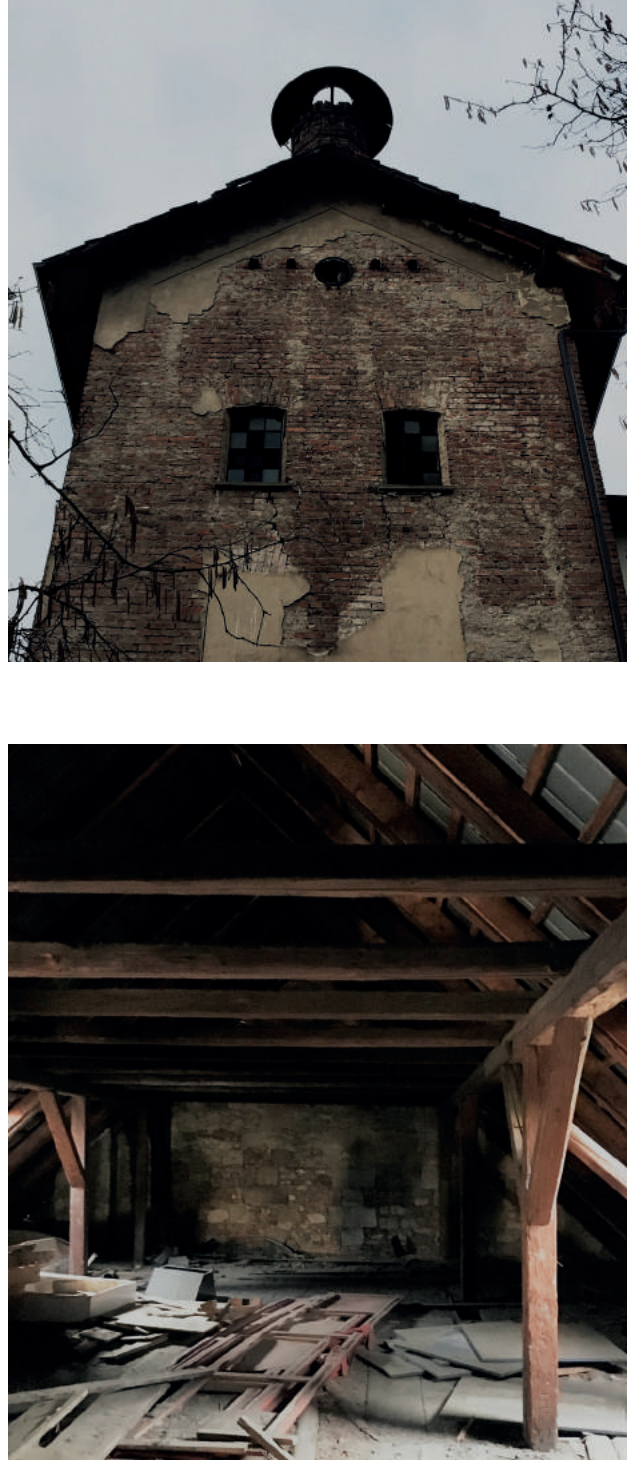




KRISTA ANTILA, FINLAND
7TH YEAR
SUMMER TERM 2020, ATELIER EFLER

Brewery and multipurpose area
BREWERY AREA REGENERATION
TURNOV REGION, CZECH REPUBLIC

STUDIO EFLER, T. EFLER, T. TOMSA, M. STOČES
DEPARTMENT OF ARCHITECTURE CONSERVATION
FACULTY OF ARCHITECTURE, CTU IN PRAGUE



THE OLD BREWERY AREA RE-FINDS ITS PURPOSE AS A BREWERY, PRODUCING BEERS TO BE CONSUMED AND BOUGHT DIRECTLY ON SITE. THE BREWERY IS ACCOMPANIED WITH A MULTIPURPOSE AREA THAT PROVIDES A HOLISTIC EXPERIENCE, CONSISTING OF RESTAURANTS, A BAR, A PRODUCT SHOP, A SMALL-SCALE COFFEE ROASTERY, OFFICE SPACES AND A GALLERY SPACE. OPEN, DIVERSE YARDS, GUESTHOUSE AND WORKSHOP SPACES COMPLETE THE AREA TO ACCOMMODATE GUESTS AND EVENTS DAY AND NIGHT.

THE FACADES ARE RESTORED AND MODIFIED LIGHTLY TO FIT NEW FUNCTIONS AND GIVE INSIGHT TO WHAT IS HAPPENING IN THE BUILDINGS. THE LIGHT PLASTERING OF THE FACADES UNIFIES THE PREVIOUSLY FRAGMENTED ENTITY.

THE OLD MALT DRYING TOWER REVEALS ITS BRICK FAÇADE SHOWING THE HISTORICAL WINDOW OPENINGS AS RELIEFS OF THE PAST. OPAQUE GLASS PANELS AND PERFORATED CORTEN SHEETS LET LIGHT INTO THE WORKSHOP-SPACES, WHILE PROVIDING PRIVACY FOR THE USERS. THE EAST CORNER PLOT HAS BEEN ADDITIONALLY BUILT TO CREATE A GATEWAY, SHOP AND INFORMATION-CENTER WHEN ENTERING THE NEW MULTI-PURPOSE AREA.

THE OPENNESS OF THE COURTYARD PROVIDES POSSIBILITY FOR CULTURAL EVENTS AND PRACTICALITIES OF USE. THE RECTILINEAR COBBLESTONES AND SMALL WATER ELEMENTS OF THE YARD SERVE AS A CONTRAST AND AS A HINT TO THE GARDEN AROUND THE CORNER REMAINING GREEN AND UNTOUCHED.

