



REKA IS MORE

The river Elbe rises in the Křkonoše mountains of the northern Czech republic, before traversing Bohemia, then Germany, and flowing into the North sea at Cuxhaven. Its total length is 1094 kilometers. The Elbe meets with river Ohře south of the city Litoměřice. One of the places both rivers touch is Lodní náměstí - the site of the project. With its unique location close to the city center, as well as to both of Litoměřice's islands, the project offers a unique urban public space by the river.

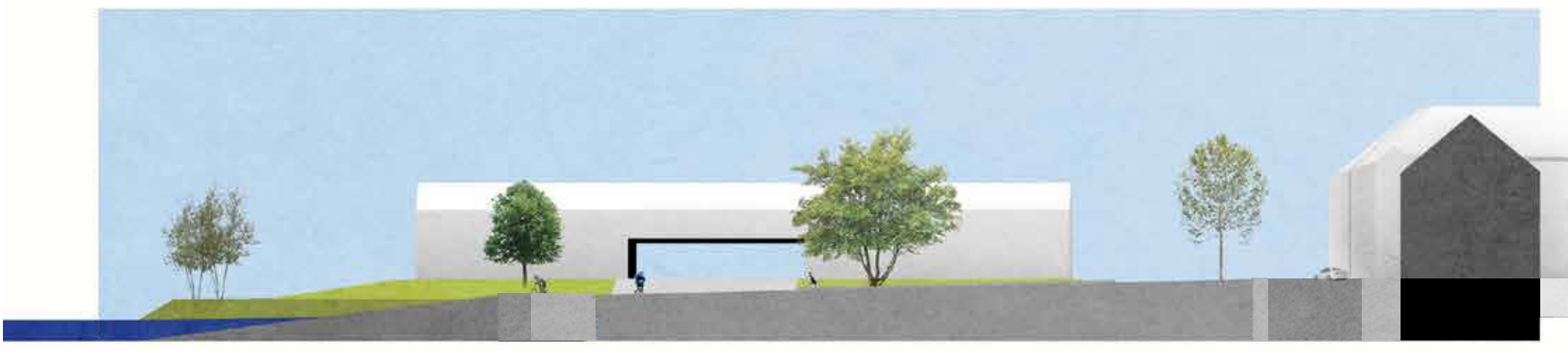
The site is currently full of washed up parts from past, glued together. For the site to be used by people, it is necessary to connect it with its surroundings. Recognizing a historic connection, cut off by the railroad in 1874, the Lodní náměstí can be reconnected and comfortably accessed from the historic center on foot. The heavily used Elbe cycle road can also be moved closer to the river and traverse through the square.

Car traffic dominates on the square and uses most of the space. By bringing balance between the pedestrians, cyclists and drivers, an enjoyable public space can be achieved. The project site can be defined by three different parts, with different characters and unique river access. Each part has a main point of focus - shops, restaurant, cafebar - giving Litoměřice's residents a reason to visit.

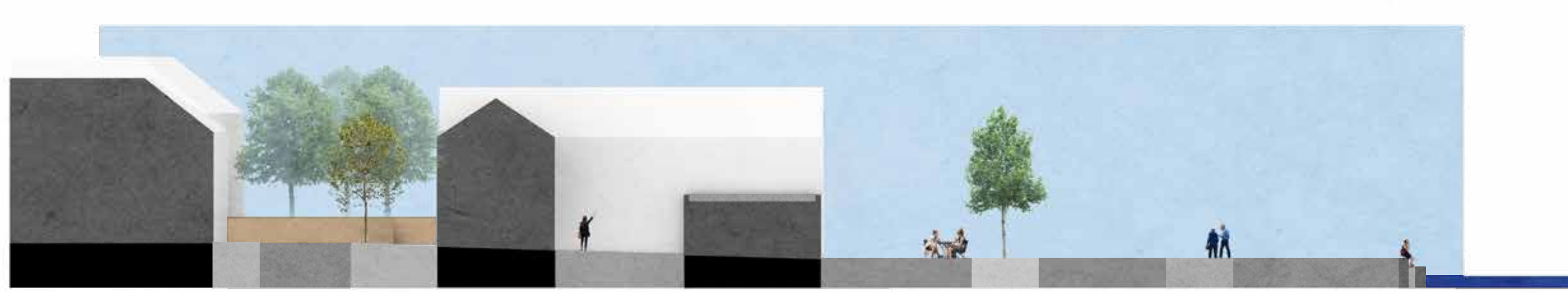
Restoring old military compounds and paving with semi-permeable surfaces is the theme for the west part, defined as a mix between nature and a city. The east side is most informal and vegetated; old stone wall, tall Platanus trees, human scale of the space. Supporting, managing and bringing up valuable qualities of this part is crucial. The middle part serves as a city scape. Visitors using boat will have their first experience with Lito here. Tall solitary trees, big areas and urban riverfront enable community events to be organized.

Despite the site being in an active flood area, I believe, that cities cannot drown. Literally and metaphorically.

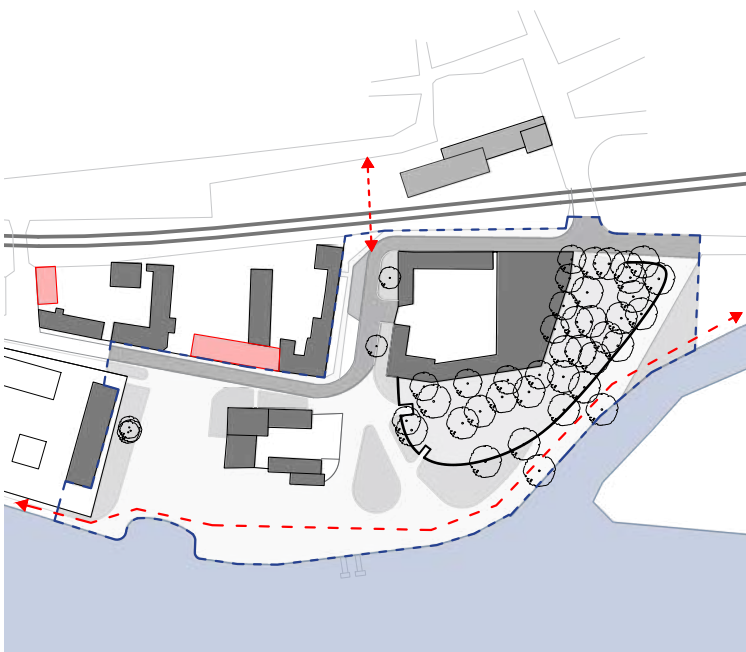
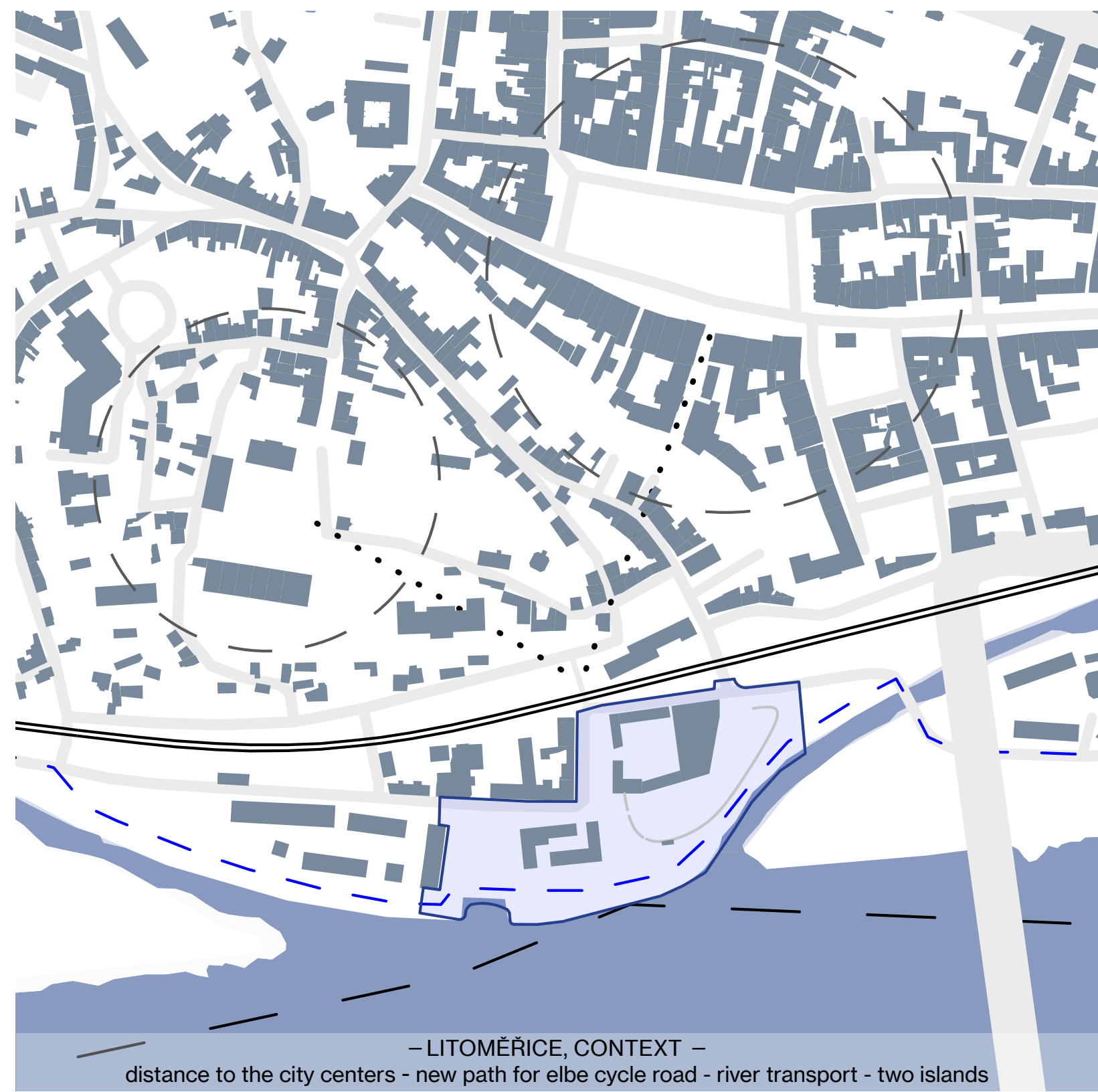
SECTION A



SECTION B



SECTION C



- CONNECTIONS & BLOCKS -



- TRAFFIC -



- THREE PARTS AND MAIN POINTS -



- RIVER ACCESS -



- TREES -



- WATER PERMEABILITY -

