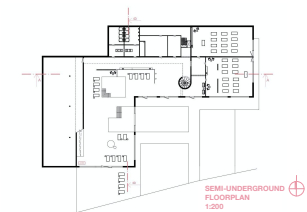


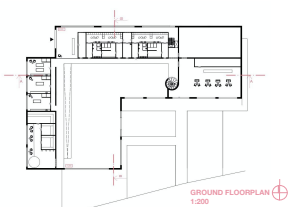
ACQUA SPANDAE OR SALUT PER ACQUA - IT STILL REMAINS UNCERTAIN AS THE ETYMOLOGICAL ORIGIN OF THE WORD SPA. IT IS A FACT THAT THERE IS A 5000 YEARS OF HISTORY VERY WELL RECORDED ABOUT OUR RELATIONSHIP WITH WATER IN AQUATIC RITUALS OF BODY TREATMENT OR SPIRITUAL PURIFICATION.

THE SPA IS DESIGNED AS URBAN OASIS. A PLACE OF MEDITATION, FUN AND RELAXATION. THE CONSTRUCTION OF THIS PLACE IS CONCRETE. FACADES ARE FINISHED WITH BLACK TIMBER CLADDING OF WAX CONSERVED PINE WOOD.

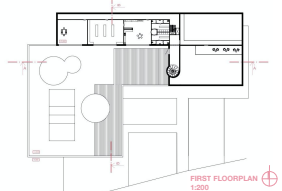
EMBEDDED FROM THE STREET LINE. IT TAKES ADVANTAGE OF PROVIDING A TRANSITION SPACE BETWEEN THE PUBLIC/ COLLECTIVE AND THE INDIVIDUAL/PRIVATE.



THE CONSTRUCTED SURFACE AREA IS DISTRIBUTED AMONG THE GROUND FLOOR WHICH HOLDS SAUNAS, TREATMENT ROOMS, ENTRANCE AND CUSTOMERS CHANGING ROOMS.



THE SEMI-UNDERGROUND FLOOR IS THE MAIN AREA, WITH WIDE RELAXING SPACES. IT IS WHERE THE REFLECTING POOLS AND EXERCISE ROOMS ARE PLACED.



THE UPPER VOLUME WITH OFFICES, STORAGE SPACES AND ACCESS TO THE GREEN ROOF WITH SUNDECK AND VOLLEYBALL COURT.

