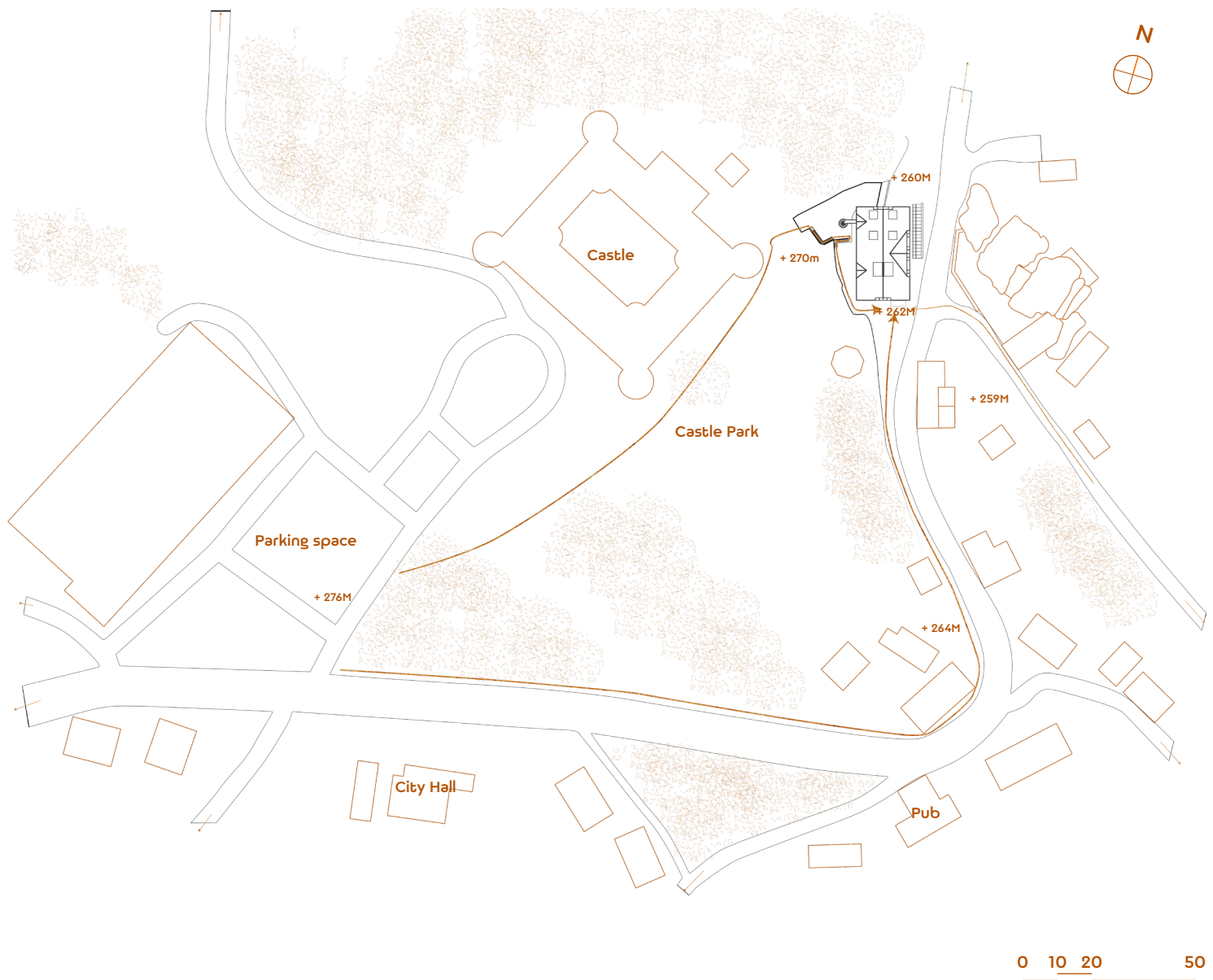


DESIGN STUDIO EFLER
 EFLER - TOMSA - STOČES
 DEPARTMENT OF
 ARCHITECTURAL CONSERVATION
 FA CTU, IN PRAGUE

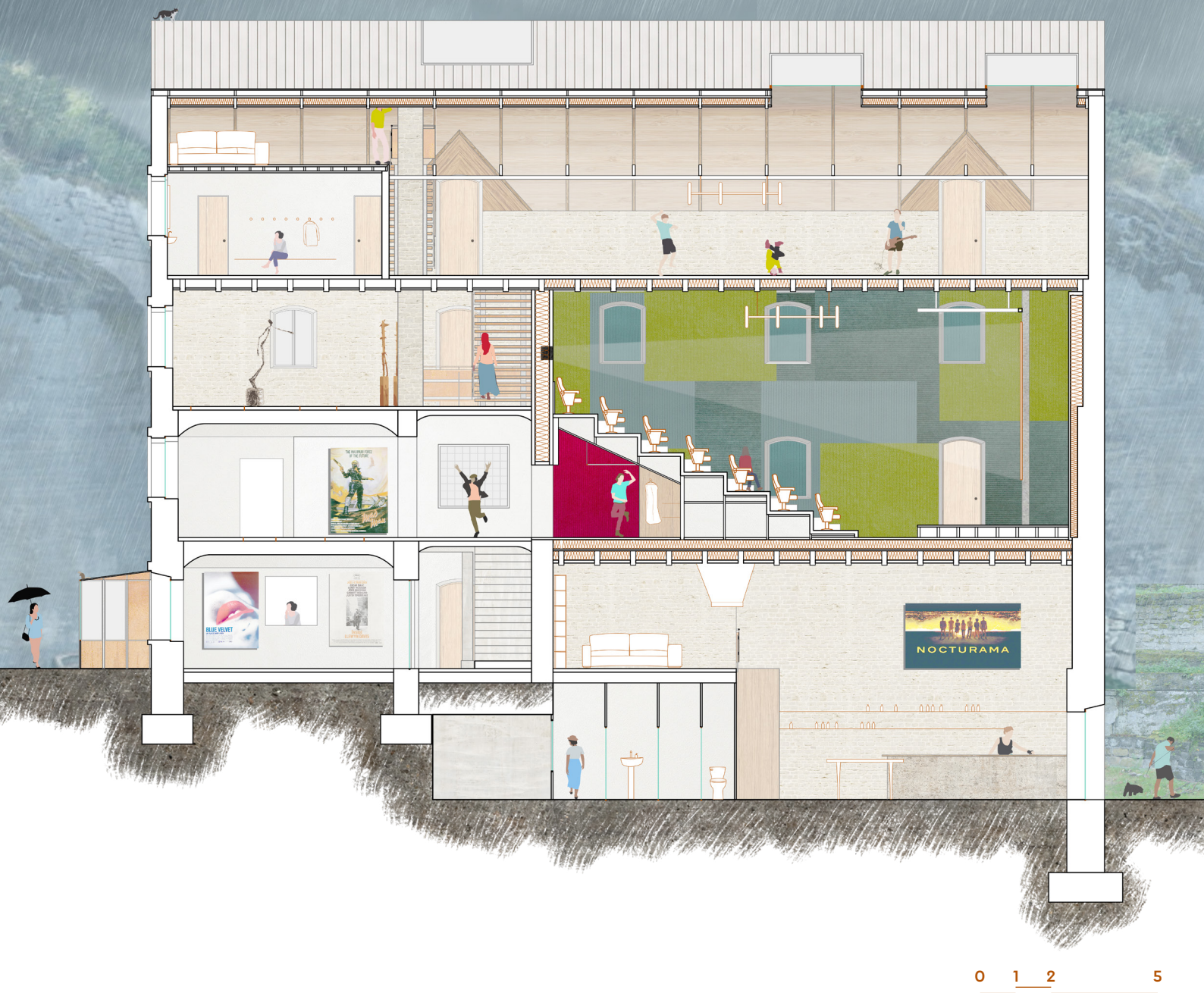
NOÉ DULAC, FRANCE
 KINO MLÝN
 FORMER WATER MILL AREA
 ZAHRÁDKY
 WINTER TERM 2020



The population of Zahradky is **680 people**, and it goes up to 1000 people in summer times. There is a **young community in the village**, that will mostly stay in Zahradky for their whole scolarity (School in Zahradky, Secondary schools in Ceska Lipa). However, despite the small library and a sport-field, nothing is offered to the youth of Zahradky as activities, and they **strongly rely on Ceska Lipa**.

Same goes for the adult population of the village, that has no access to any kind of **cultural offer in the village** itself, and that only has the pubs and parks as sociabilisation places. The reliance on Ceska Lipa is very strong too.

Zahradky is on the way to Ceska Lipa for a lot of surrounding villages, including Stvolinky. Developing a **strong cultural equipment in the village** can be a real asset for the attractivity and the revitalisation of the place. This cultural equipment could be connected with the school by including some extra-scolar activities in a place dedicated to art practice, could attract all the ages of the village and surroundings through its cinema, theater, and bar functions, and could be **a real plus for the attractivity of the village in Summer times**.



The Kino Młyn project would, to correspond to this need of revitalisation, include in the old Mill structure different equipments:

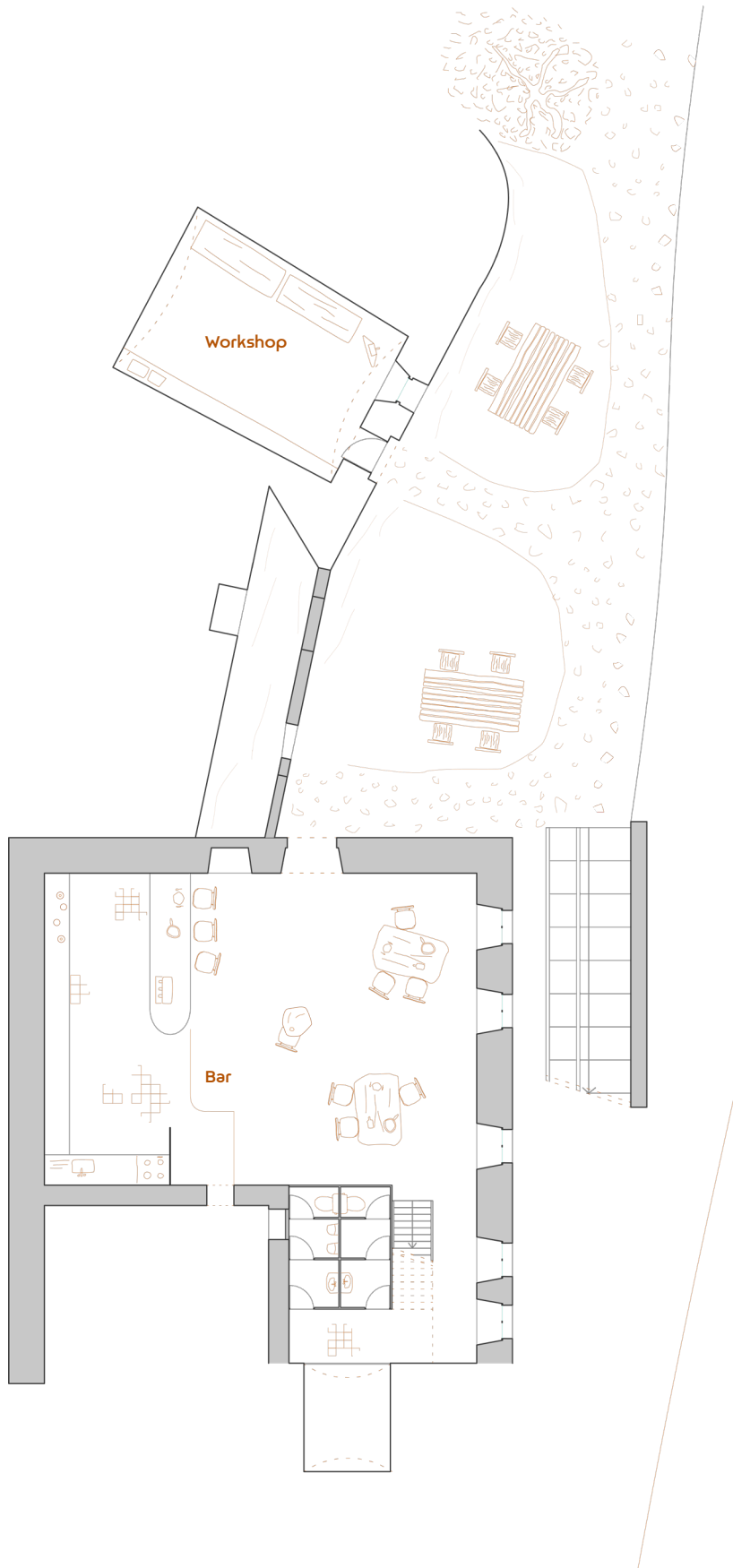
-a **Movie Theater / Theater Stage** on a double level, with 72 seats, backstage, and a system of lodges underneath the stepseats. This space would offer a cinematic programming related to young public during the day and for everyone in the evenings, as well as the representation of the spectacles created in the building.

-an **Exhibition room** that would display the works created in the building or in the village, as well as some presentation on the village history and more particularly on the mill itself.

-a **Double Level for Art Practice**, whether it's plastic arts, dance, or theater, with a diffused skylight. This space would also benefit from changing rooms and a belvedere to gain a global view of the rehearsals.

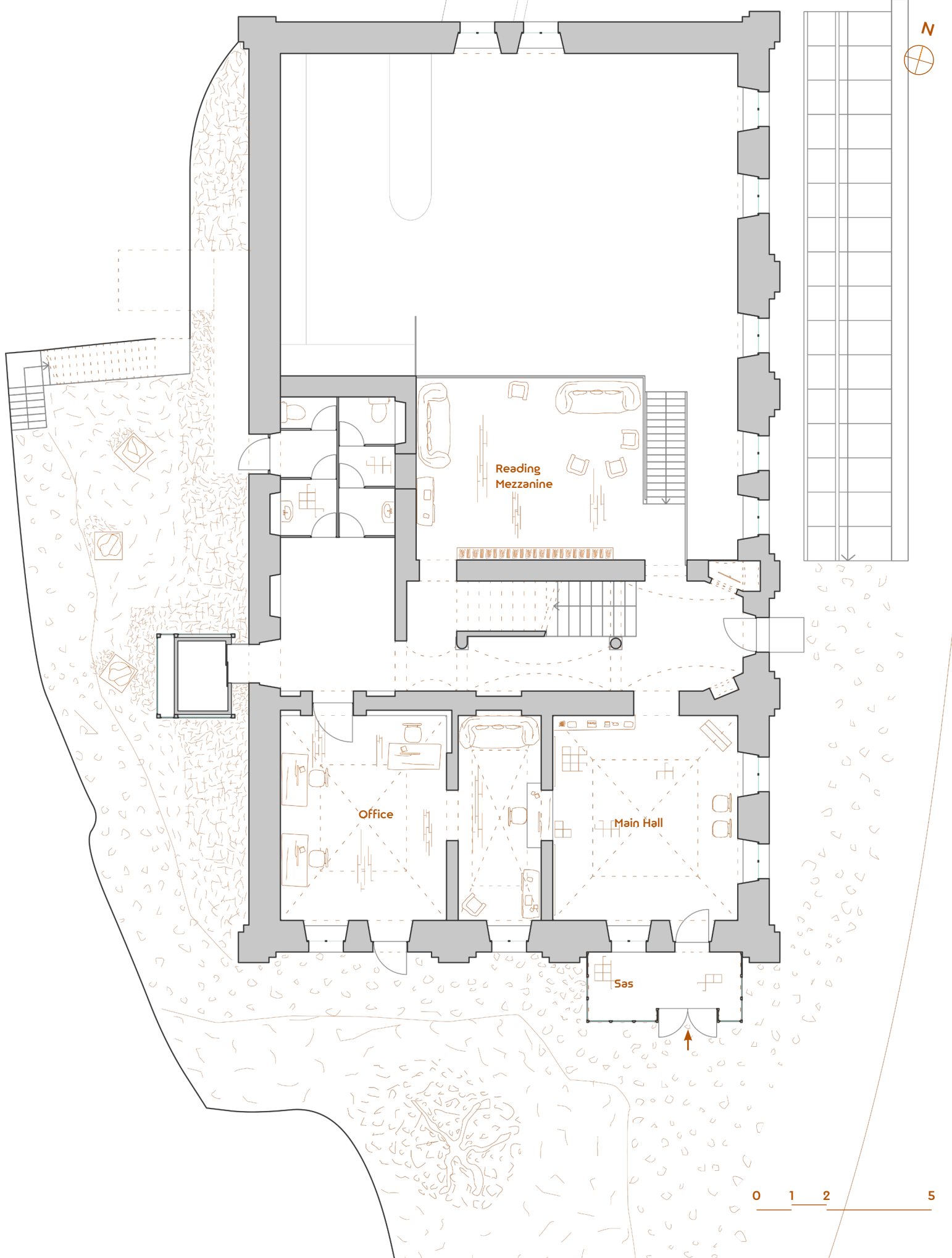
-a **Bar / Café in the basement**, on a double level, that would be connected to the exterior space of the mill, lower from the road, with a reading mezzanine in free access to consult some art-related literature and magazines. In the outside space, in the rocky room, would also be a small workshop for the creation of stop-motion movies during the good seasons, that could be an asset with discovery stages during summer.

**Longitudinal Section
Program**

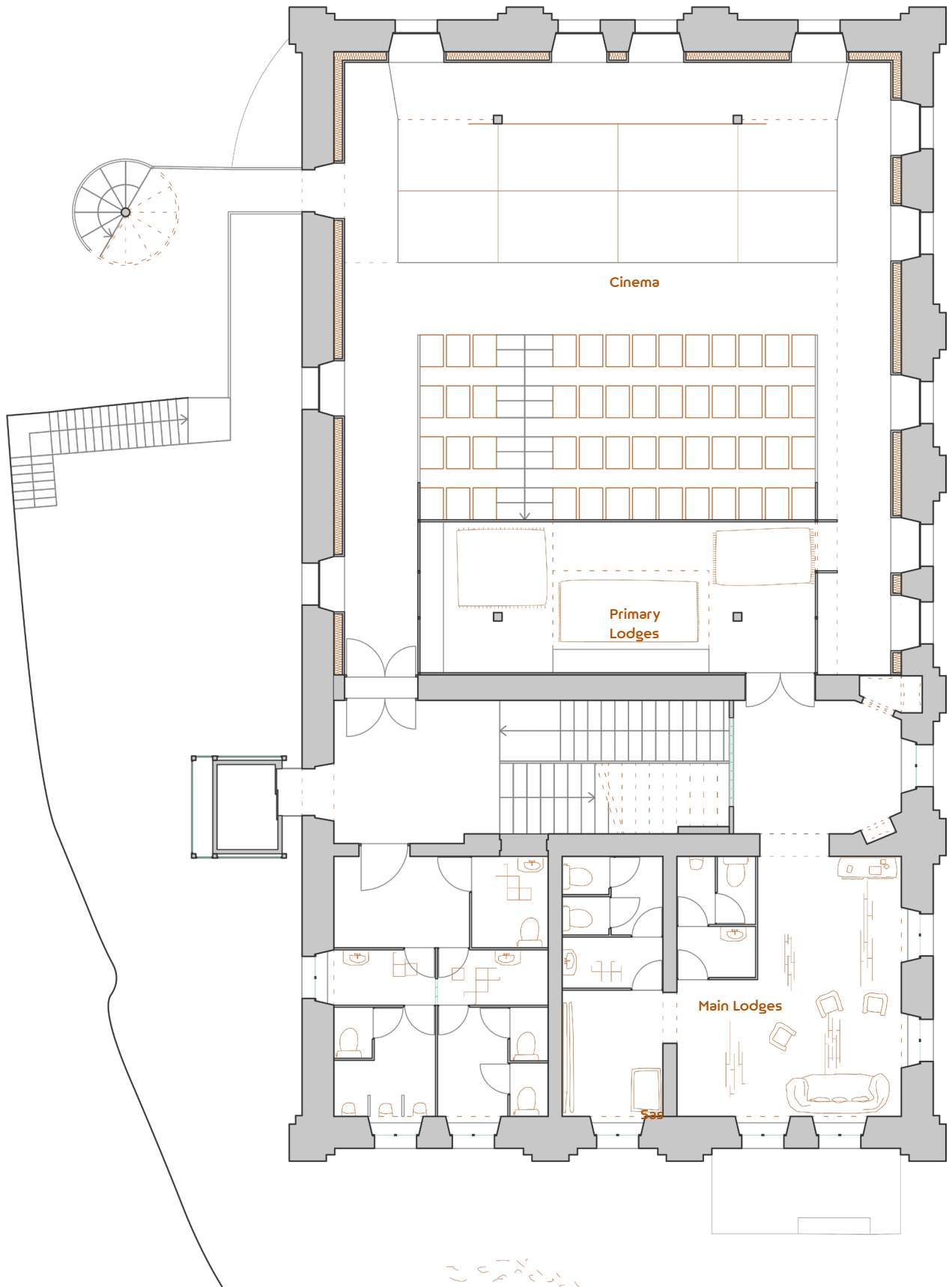


0 1 2 5

Basement
Bar, Garden, Workshop

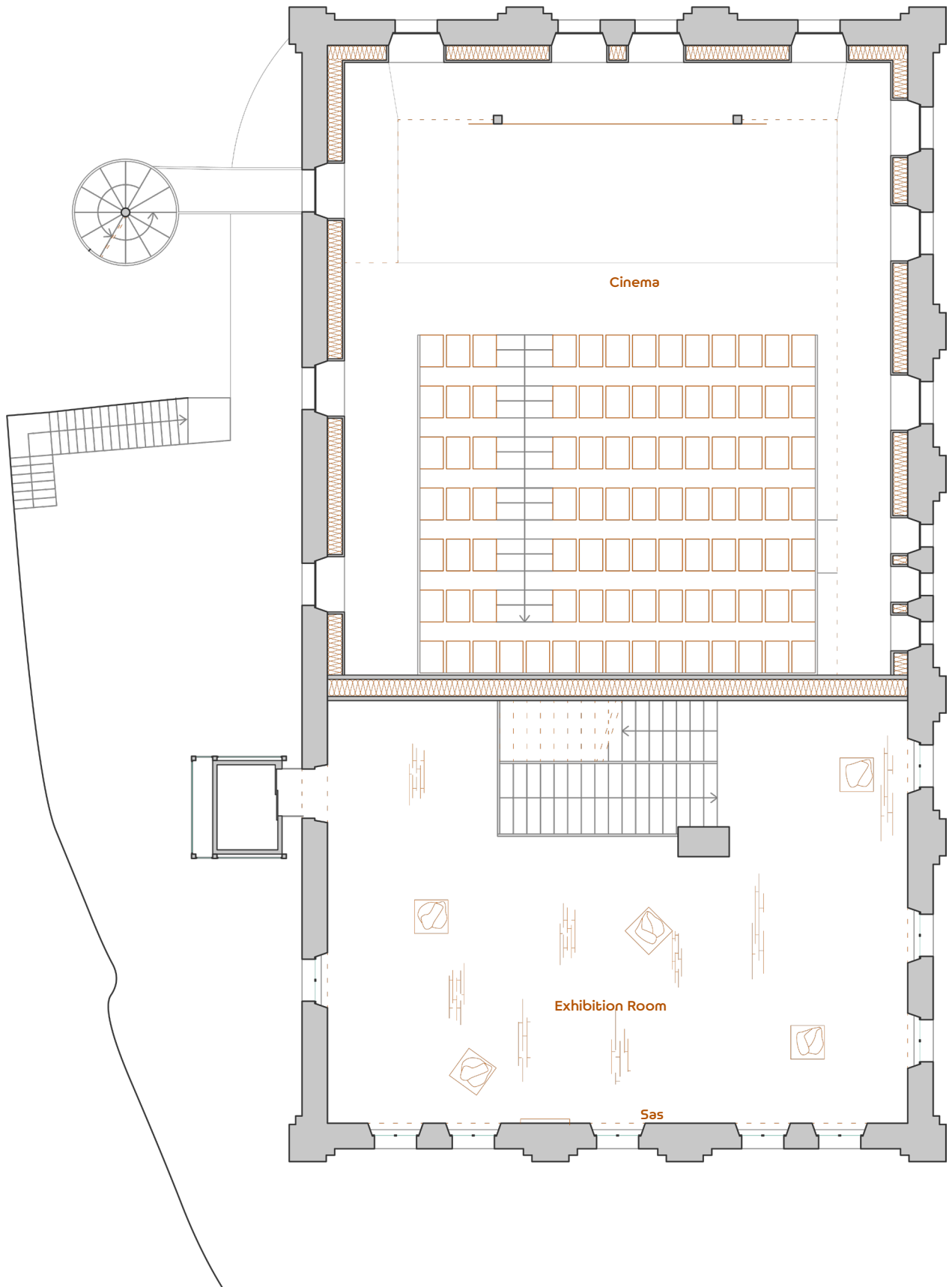


Ground-Floor
Entrance, Office, Reading room



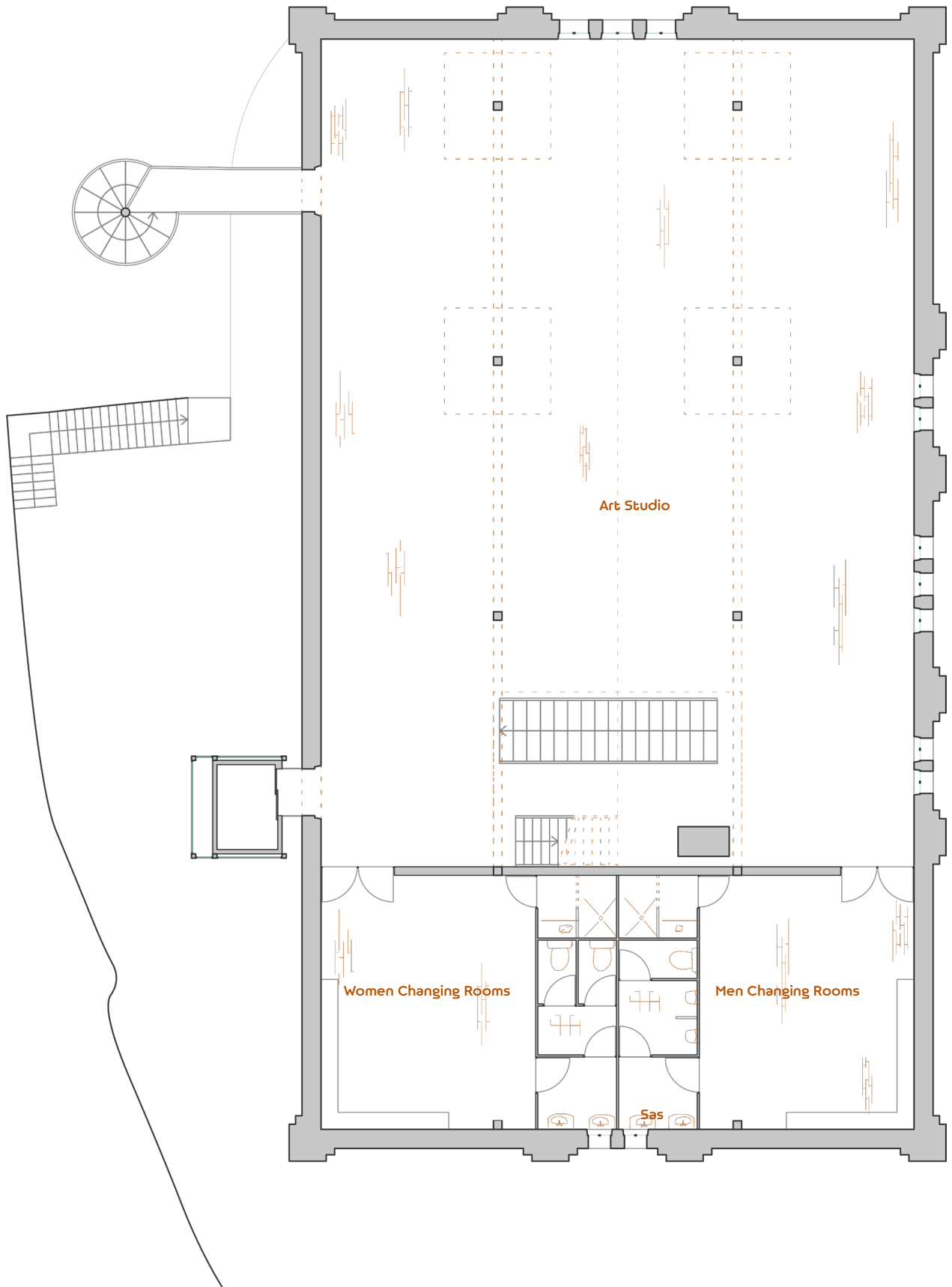
0 1 2 5

1st Floor
Cinema, Stage and Lodges



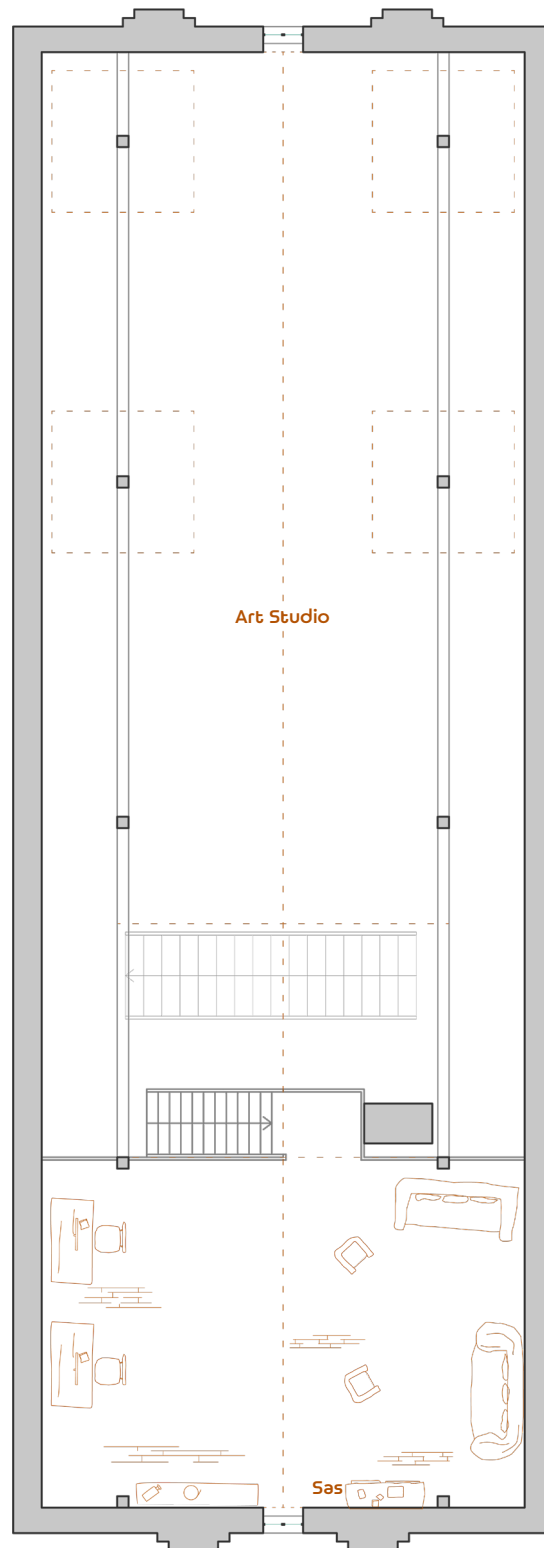
0 1 2 5

2nd Floor
Cinema, Exhibition Room



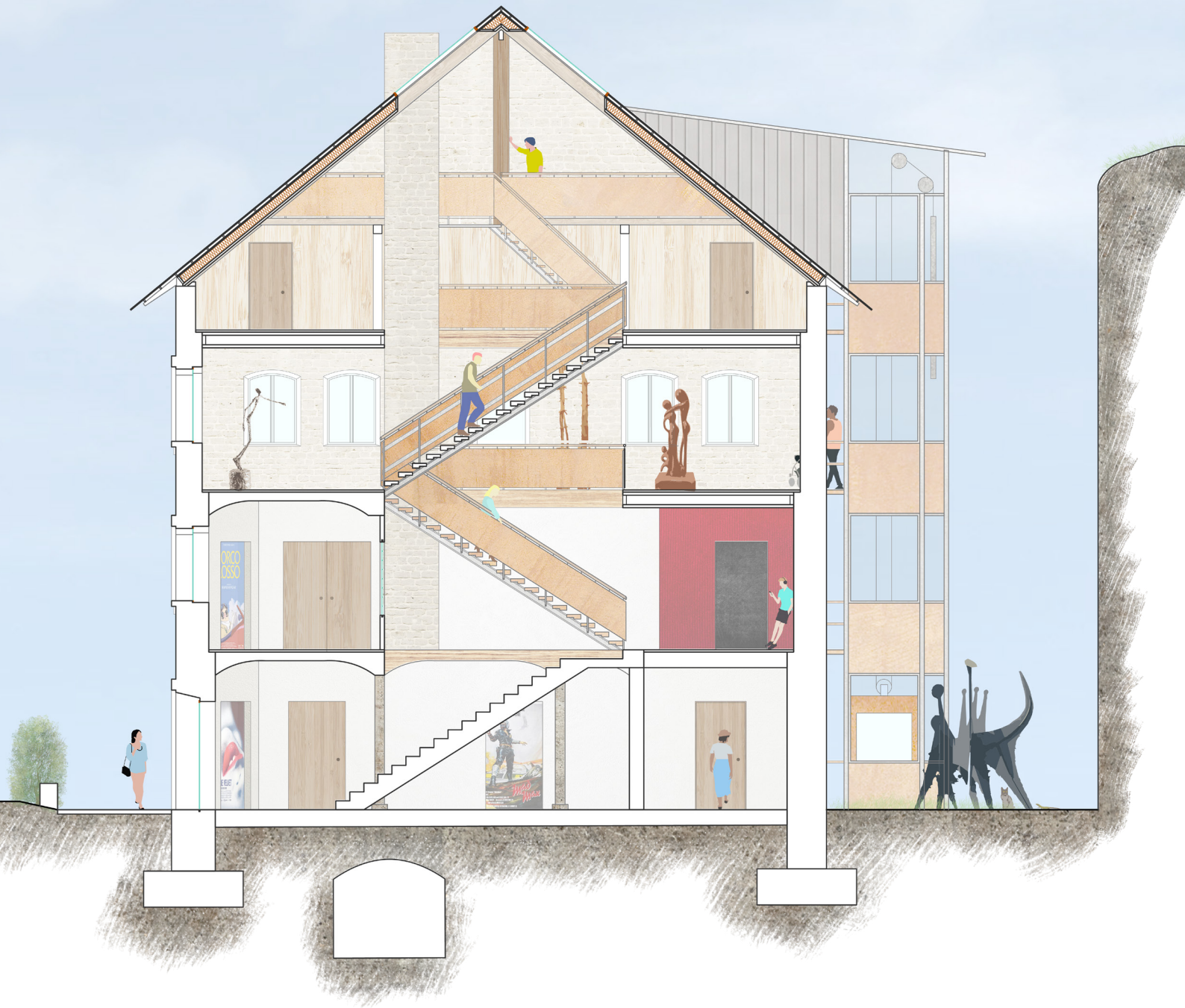
0 1 2 5

3rd Floor
Art Practice Floor and Changing Rooms



0 1 2 5

4th Floor
Chill Mezzanine and Belvedere



The new vertical circulation is based on the original ground-floor stairs axis. All the circulation devices (Entrance Sas, Staircase, Elevator) are equally treated in Corten Steel and Steel, to give it a global coherence. The staircase is really open and displays all the passage. It is enlighten through sky-lights in the roof.

Transversal Section
Vertical Circulation



0 1 2 5

The facade plaster is restored as it used to be. Some vegetation can be placed in front of the building to create shade and cool air in the summer, mainly for the employees who have their office right behind the tree.

**Southern Elevation
Entrance Facade**



0 1 2 5

The Eastern Facade was historically the main Facade of the building, with the main entrance. The main Entrance has been moved to the Southern Facade in the project, via the Sas. The Facade would be entirely re-plastered with a conservation of all the former details.

The windows of the Cinema have to be blinded, those blinded windows can be used as display devices for posters of the movies currently screening.

**Eastern Elevation
Main Facade**



**Ambiance Section
Cinema and Bar**