

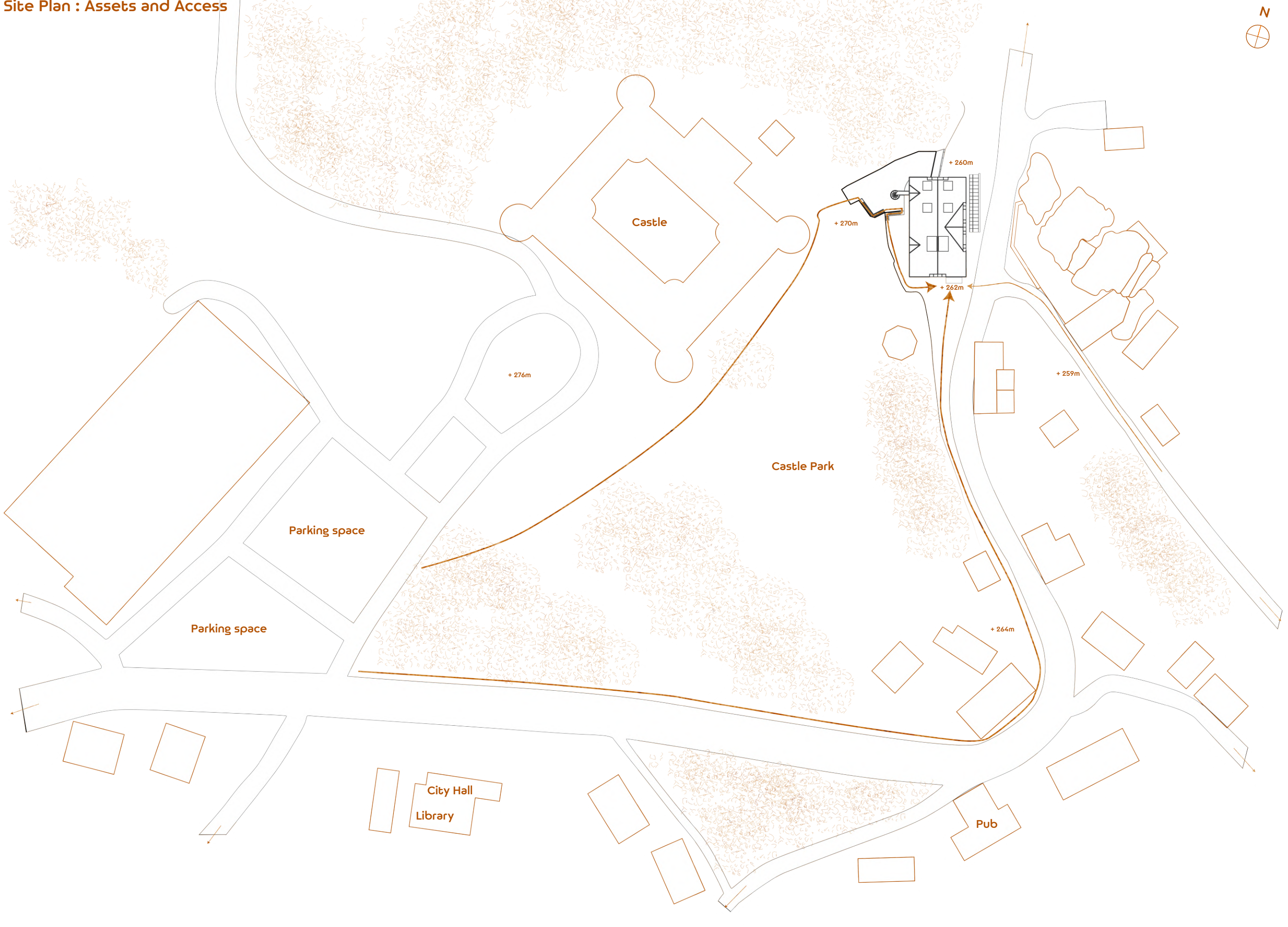


NOÉ DULAC, FRANCE
FIRST YEAR OF MASTER
WINTER TERM 2020, ATVZ... (STUDIO EFLER)

CULTURAL HOUSE - KINO MLÝN
ZAHŘÁDKY - FORMER WATER MILL AREA
ČESKÁ LÍPA REGION, CZECH REPUBLIC

DESIGN STUDIO EFLER (EFLER - TOMSA - STOČES)
DEPARTMENT OF ARCHITECTURAL CONSERVATION
FACULTY OF ARCHITECTURE, CTU IN PRAGUE

Site Plan : Assets and Access



The population of Zahradky is 680 people, and it goes up to 1000 people in summer times. There is a young community in the village, that will mostly stay in Zahradky for their whole scolarity (School in Zahradky, Secondary schools in Ceska Lipa). However, despite the small library and a sport-field, **nothing is offered to the youth of Zahradky as activities**, and they strongly rely on Ceska Lipa.

Same goes for the adult population of the village, that has no access to any kind of cultural offer in the village itself, and that only has the pubs and parks as sociabilisation places. The reliance on Ceska Lipa is very strong too.

Zahradky is on the way to Ceska Lipa for a lot of surrounding villages, including Stvolinky. **Developing a strong cultural equipment in the village** can be a real asset for the attractiveness and the revitalisation of the place. This cultural equipment could be connected with the school by including some extra-scolar activities in a place dedicated to art practice, could attract all the ages of the village and surroundings through its cinema, theater, and bar functions, and could be a **real plus for the attractiveness of the village in Summer times**.

The Kino Mlyn project would, to correspond to this need of revitalisation, include in the old Mill structure different equipments:

-a **Movie Theater / Theater Stage** on a double level, with 72 seats, backstages, and a **system of lodges underneath the steps**. This space would offer a cinematic programming related to young public during the day and for everyone in the evenings, as well as the representation of the spectacles created in the building.

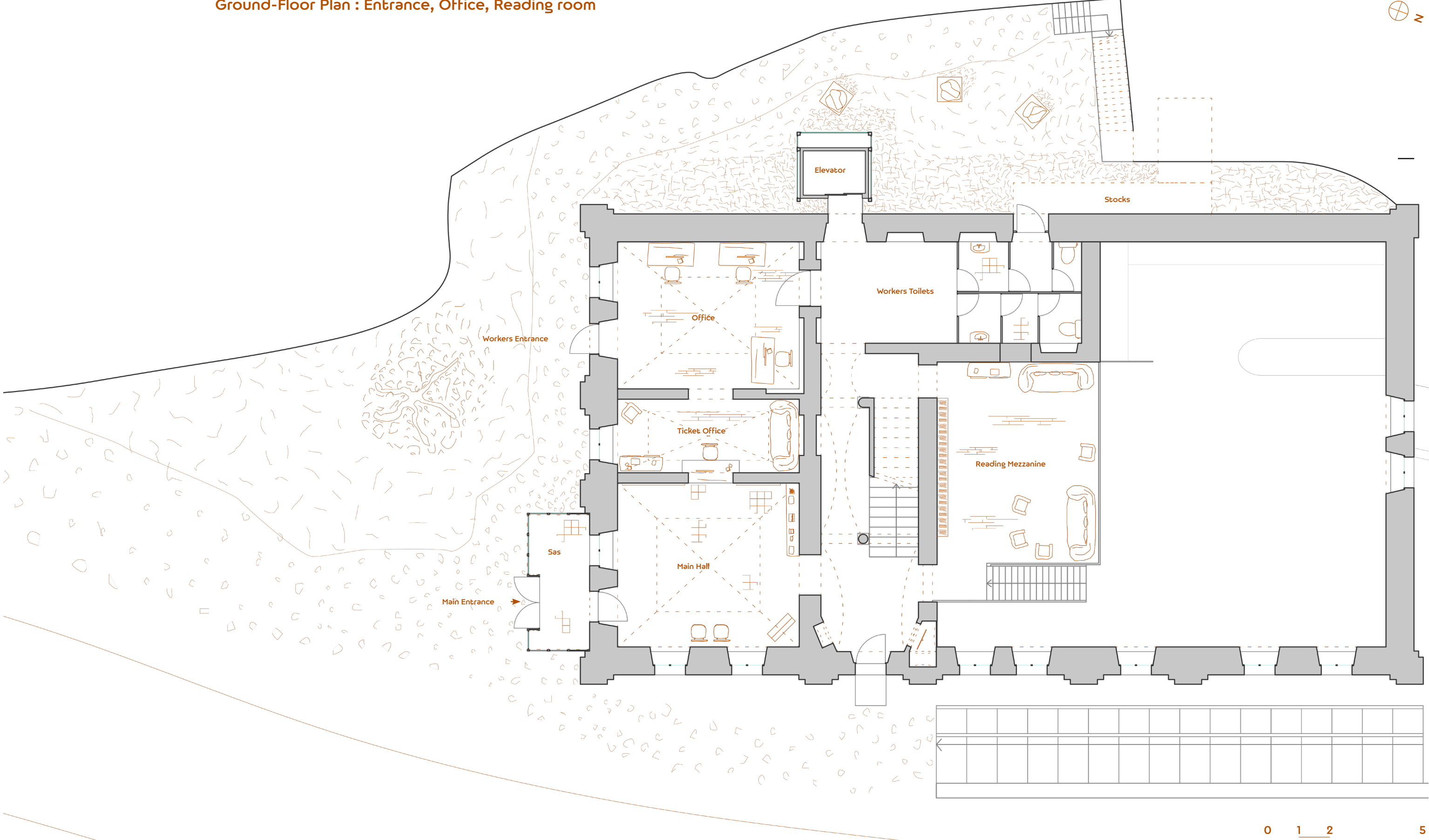
-an **Exhibition room** that would display the works created in the building or in the village, as well as some presentation on the village history and more particularly on the mill itself.

-a **Double Level for Art Practice**, whether it's plastic arts, dance, or theater, with a diffused skylight. This space would also benefit from changing rooms and a belvedere to gain a global view of the rehearsals.

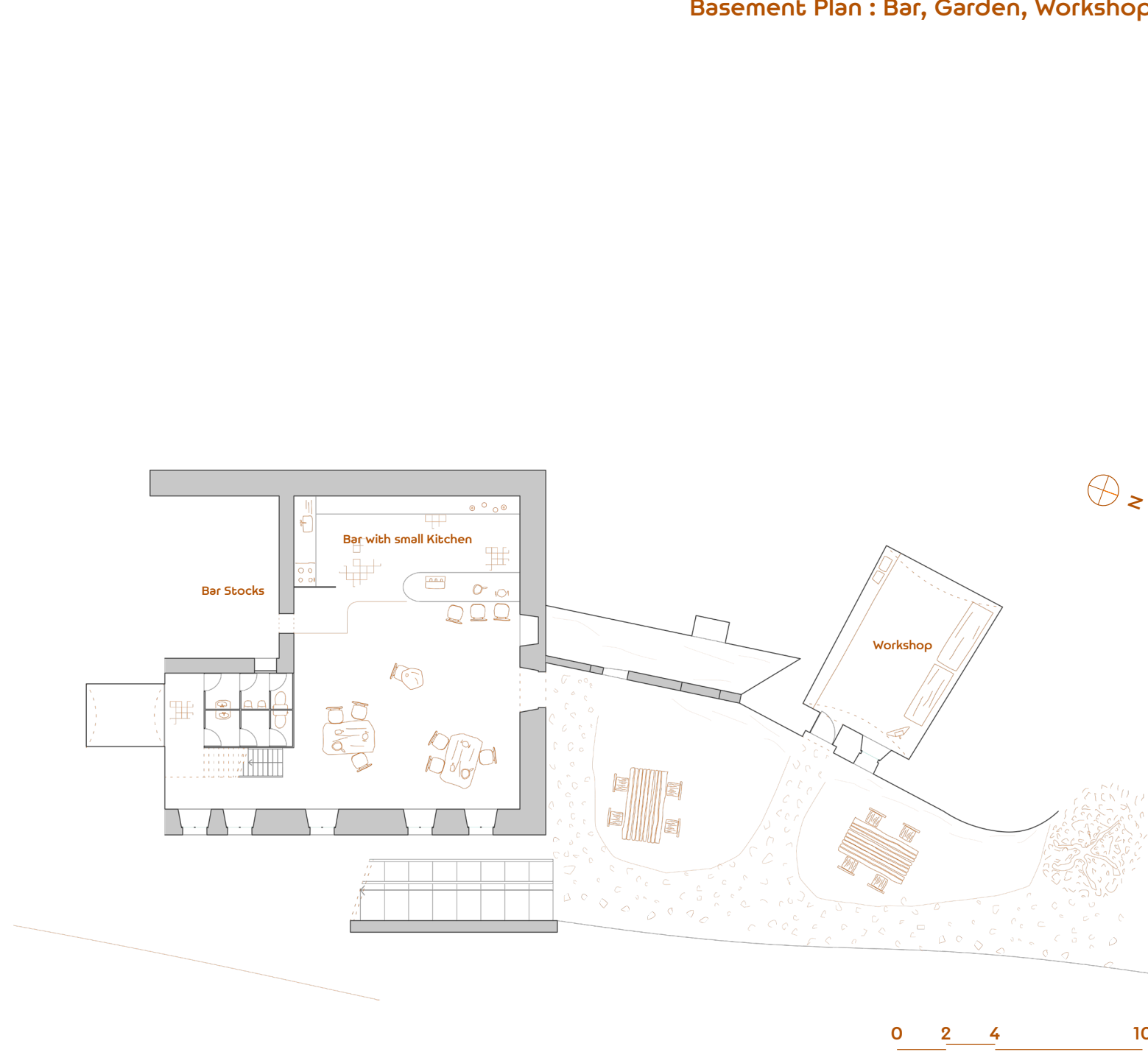
-And of course a **Bar / Café in the basement**, on a double level, that would be connected to the exterior space of the mill, lower from the road, with a **reading mezzanine** in free access to consult some art-related literature and magazines. In the outside space, in the rocky room, would also be a small workshop for the creation of stop-motion movies during the good seasons, that could be an asset with discovery stages during summer.



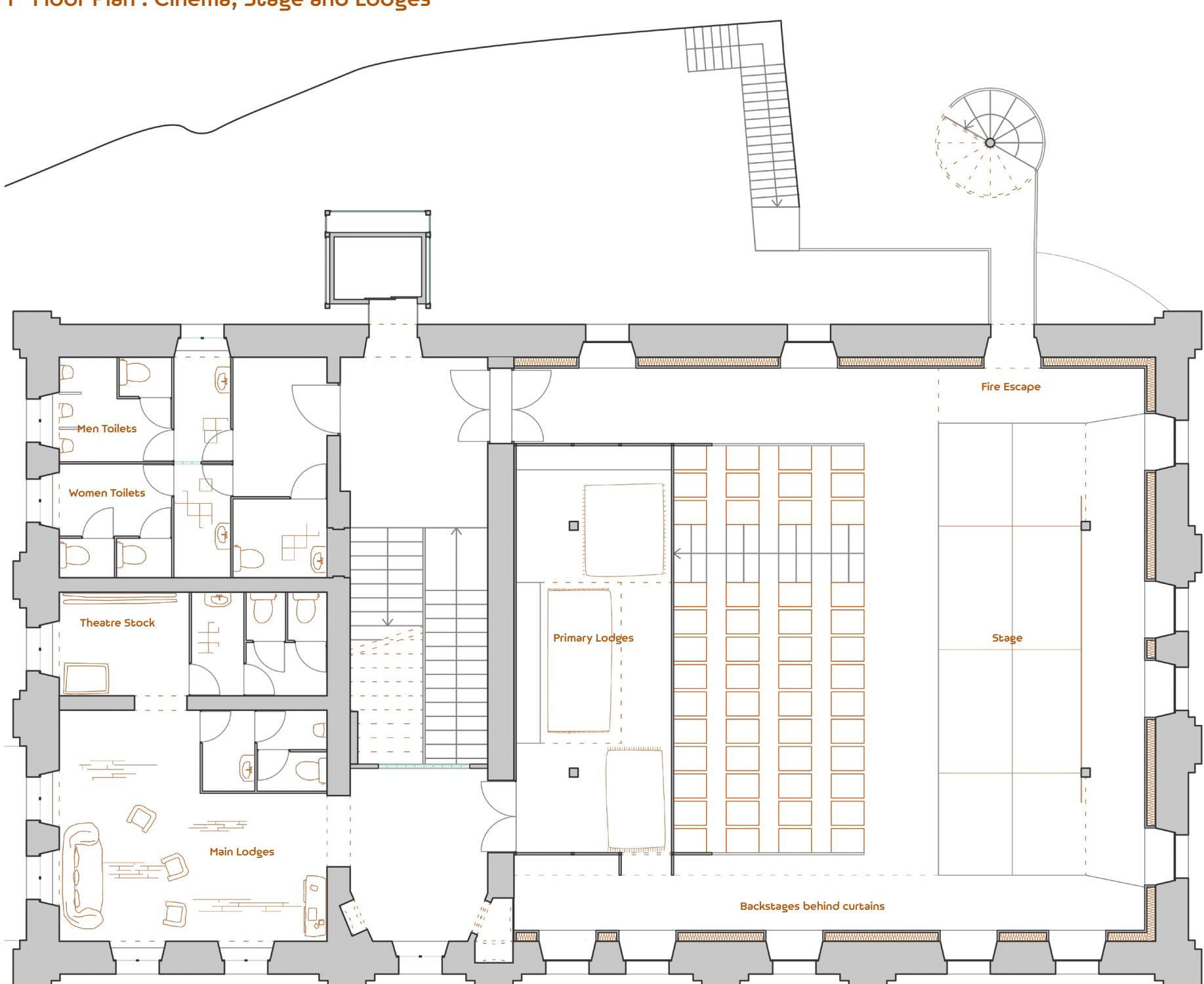
Ground-Floor Plan : Entrance, Office, Reading room



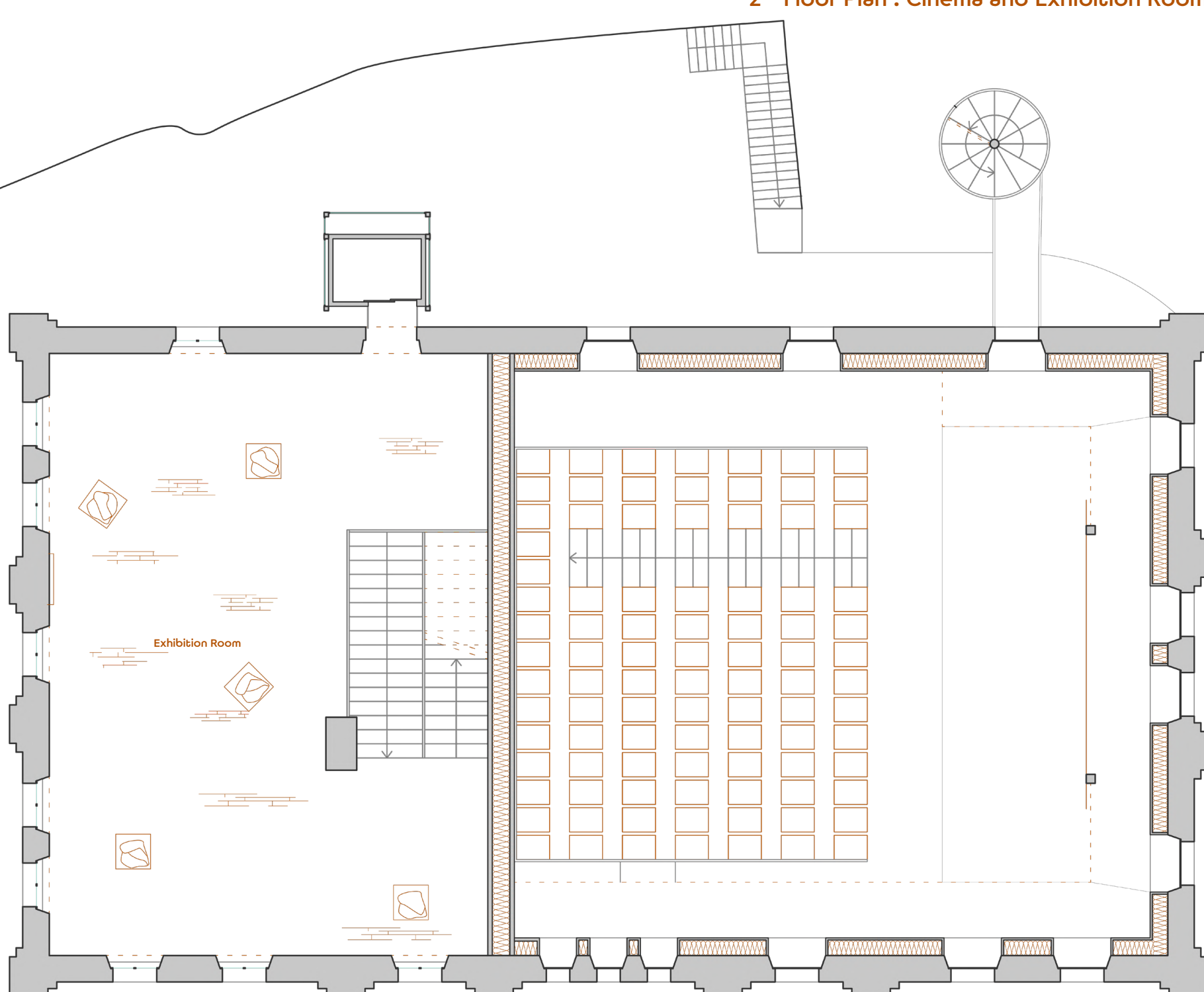
Basement Plan : Bar, Garden, Workshop



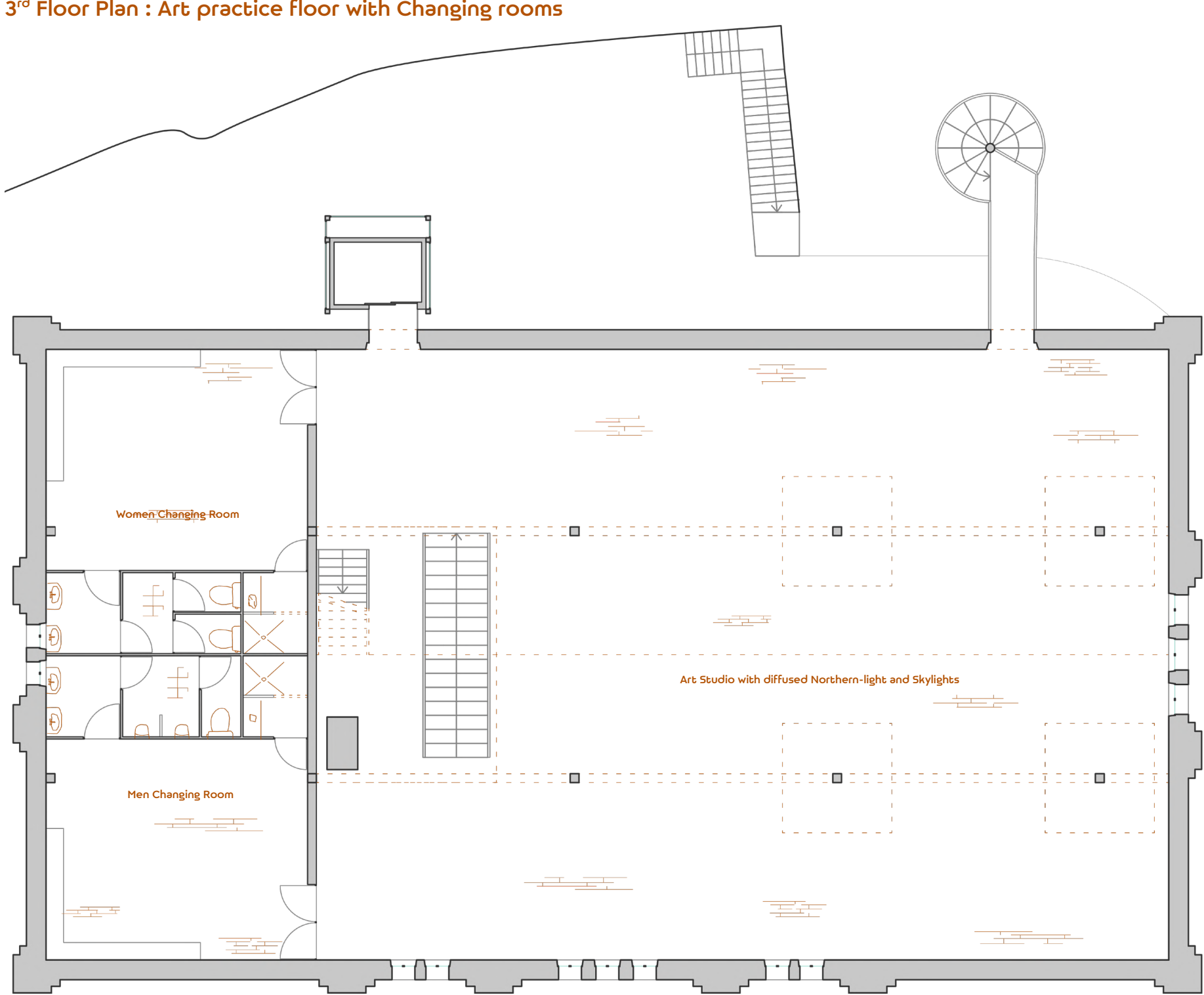
1st Floor Plan : Cinema, Stage and Lodges



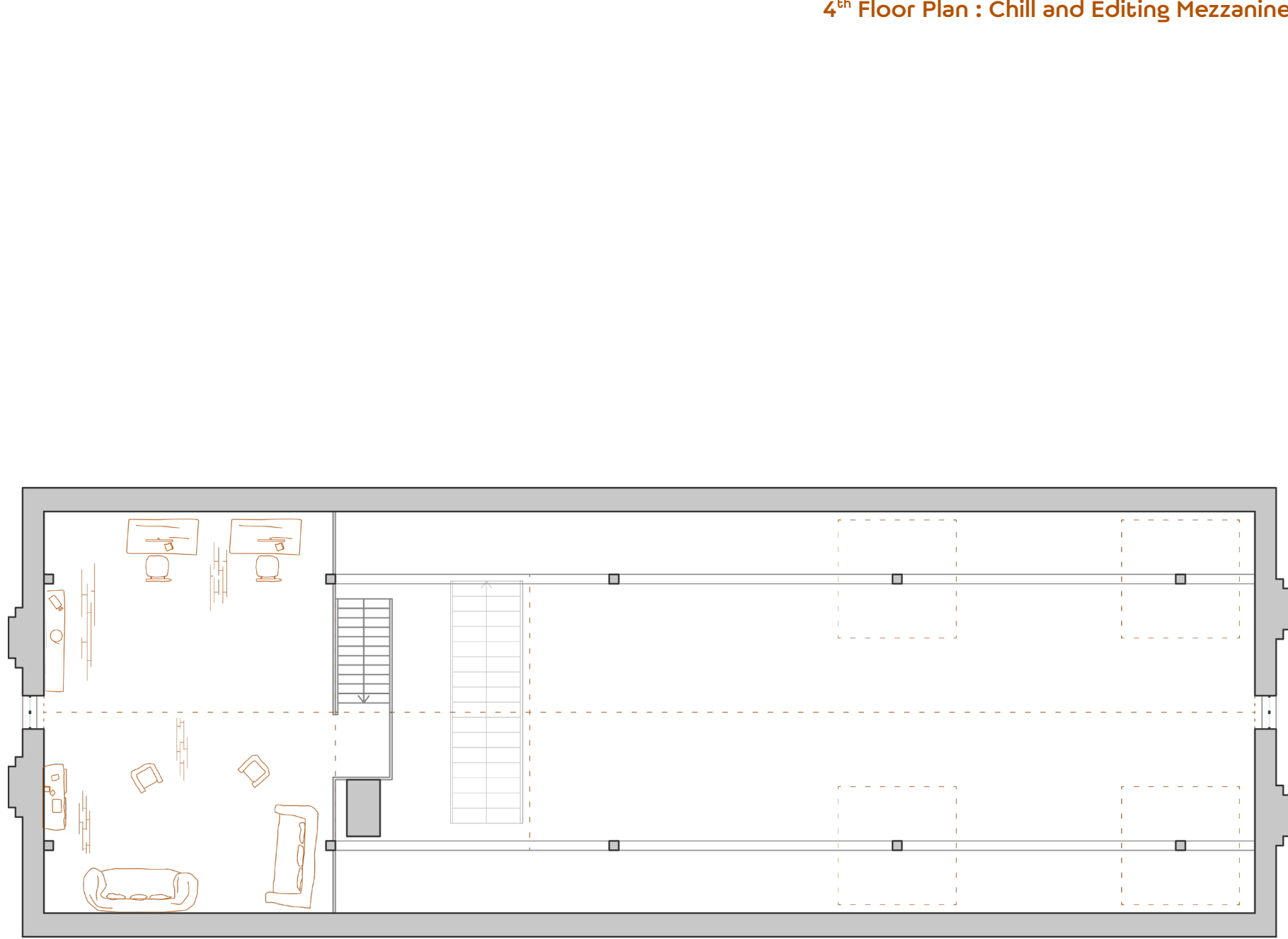
2nd Floor Plan : Cinema and Exhibition Room



3rd Floor Plan : Art practice floor with Changing rooms



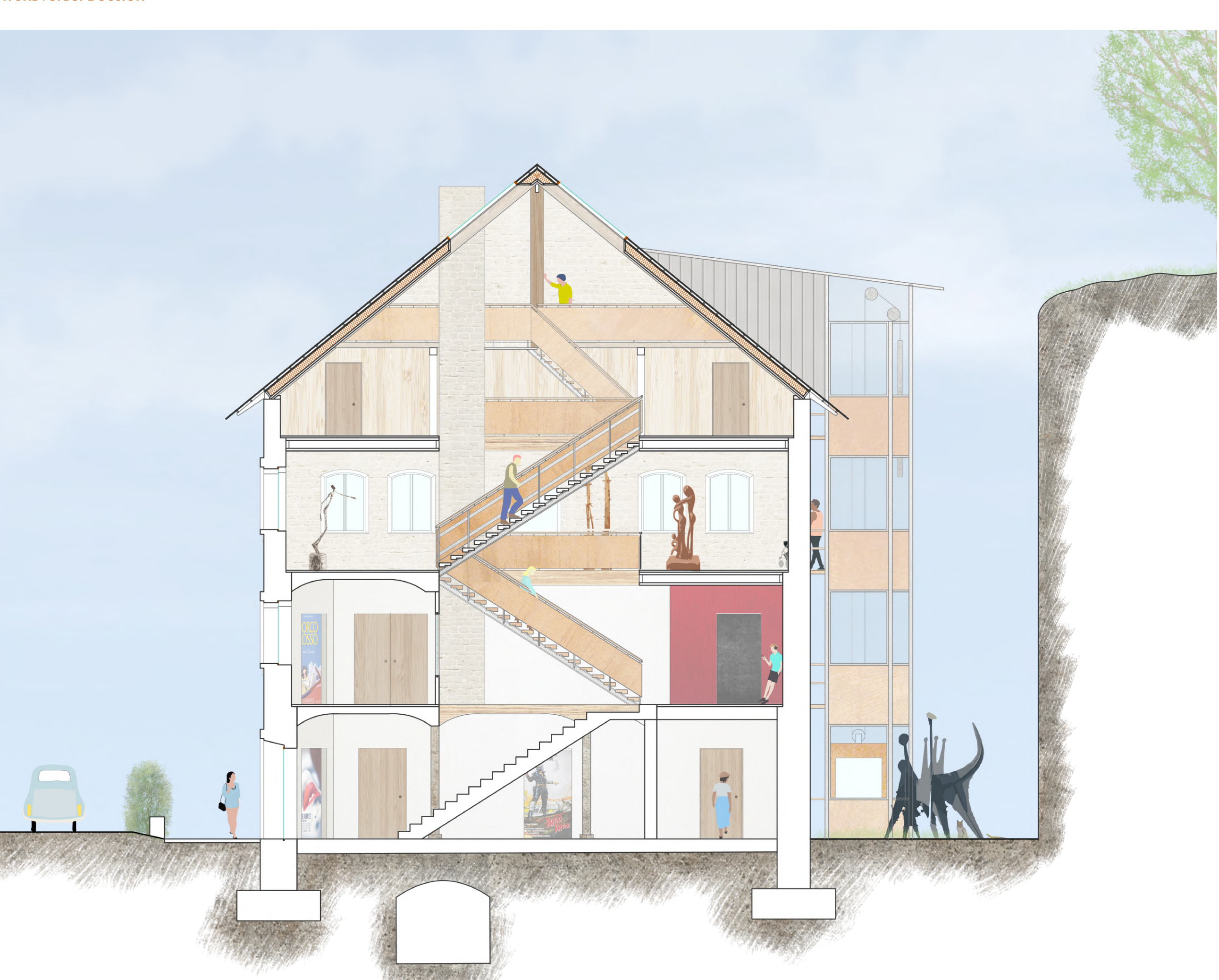
4th Floor Plan : Chill and Editing Mezzanine



Eastern Elevation : Entrance Facade



Transversal Section



Perspective Section : Bar and Cinema



Eastern Elevation : Main Facade

