

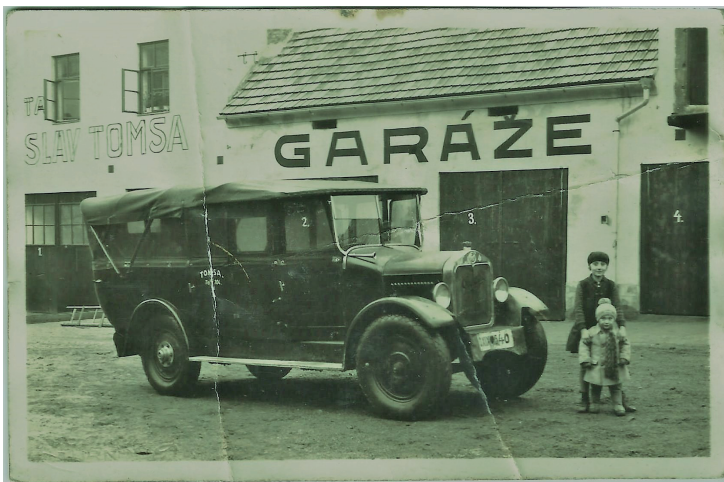


STUDIO EFLER
DEPARTMENT OF
ARCHITECTURE CONSERVATION
FA CTU, IN PRAGUE

WANDERLEI FRECCHIANE JULIA, BRAZIL

BREWERY AREA REGENERATION

TURNOV REGION
SUMMER TERM 2020



THE PROJECT IS A REVITALIZATION OF THE AREA OF THE

SVOBODA BREWERY. IT INVOLVES THREE BUILDINGS,

SO08 FROM THE 18TH CENTURY, SO10 FROM THE FIRST

HALF OF 20TH CENTURY, AND OLD STABLES AND GARGES

FROM 19TH CENTURY.

THE OLD STABLES USED TO HAVE WOODEN BEAMS, AS

THE SPACE WASN'T USED TO KEEP HORSES IN.

STABLES WERE FIRST MENTIONED AS UNFINISHED IN 1828.

THIS BUILDING IS FIRST SHOWN ON A MAP IN 1848 AND

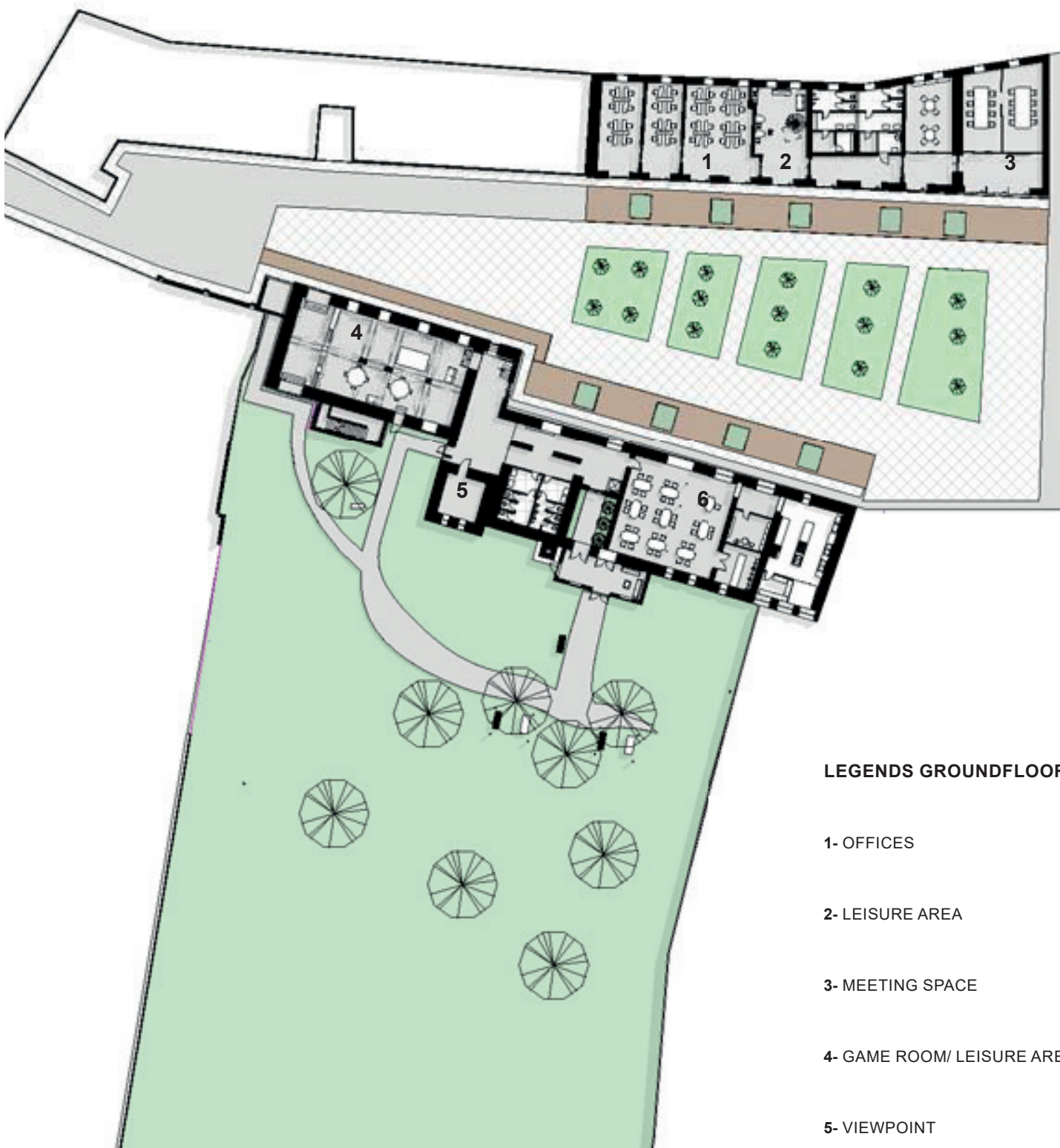
MENTIONED IN DOCUMENTS IN 1871

THE STABLES WERE CONVERTED TO A GARAGE IN THE

20TH CENTURY.

IN THIS PROJECT THE MAIN IDEA IS TO MAKE THIS AREA AN

COWORKING AND LEISURE SPACE.



0 1 5 10

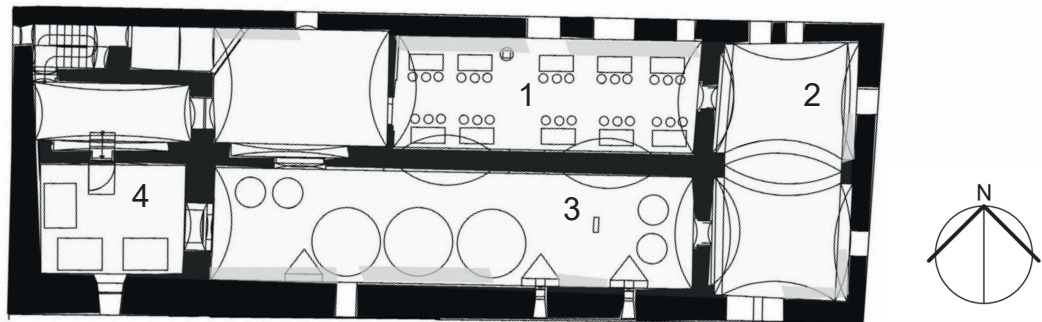


• SITUATION

• ESC 1:350

THE NEW AREA WAS DESIGNED AS A SPACE TO PROMOTE COOPERATION BETWEEN DIFFERENT BRANCHES AND UNITS. IT HAD TO BE AN ADEQUATE PLACE FOR SERVICE TRAINING/WORKING AND CONDUCTING CLASSES AND EVENTS.

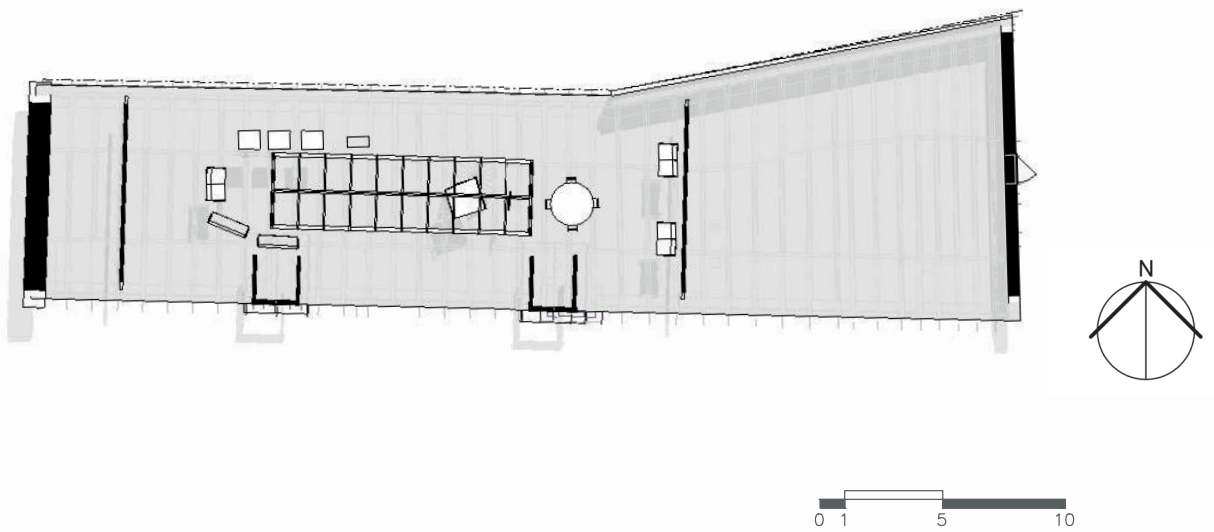
THEREFORE, IT WAS ADOPTED THE CONCEPT OF A PUBLIC HOUSE, WHICH USED TO BE THE FOCAL POINT OF COMMUNAL GATHERING IN OLD ENGLAND. A PUBLIC HOUSE OR PUB IS FAMILIAR TO US AS A PLACE THAT SERVES ALCOHOLIC DRINKS. IN THE PAST, IT WAS ALSO A PLACE FOR COMMUNICATION AND ENTERTAINMENT.



- UNDERGROUND BREWERY BAR
- ESC 1:200

LEGENDS

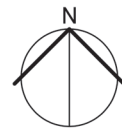
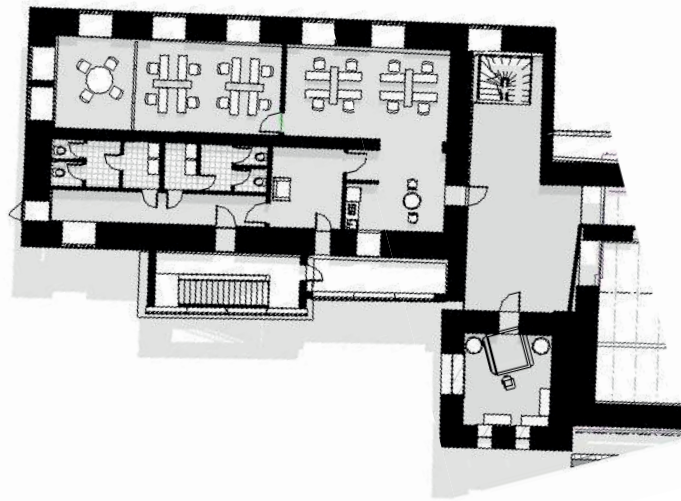
- 1- BAR
- 2-STAGE/CONCERT AREA
- 3- BREWERY BARRELS
- 4- MALTE



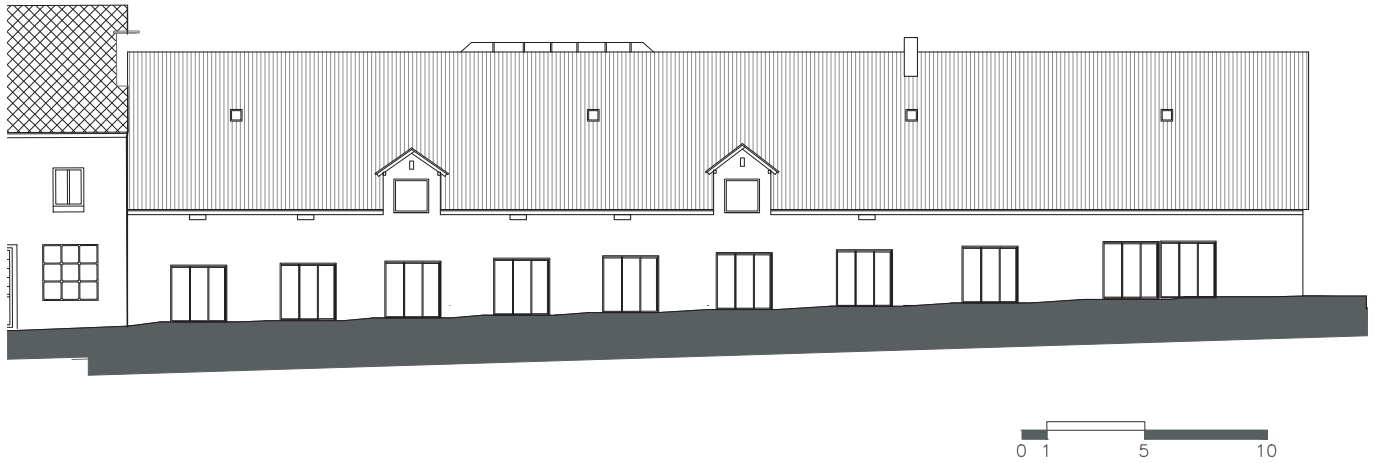
- 2ND FLOOR- COWORKING GARAGES

ATTIC LEISURE SPACE

- ESC 1:200



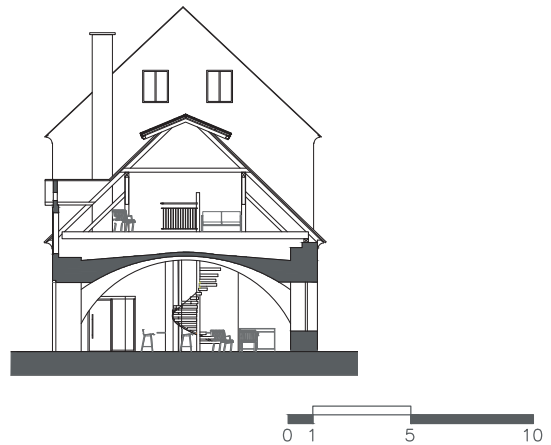
- 2ND FLOOR- COWORKING
- ESC 1:200



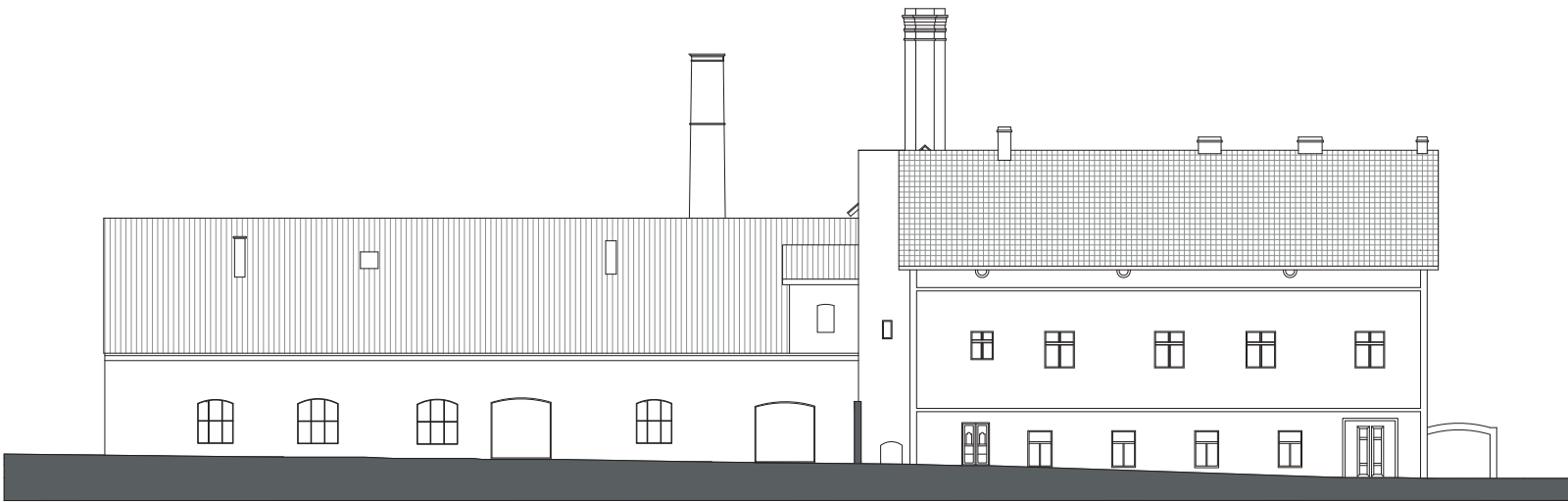
- SOUTH ELEVATION -COWORKING BUILDING ESC 1:200



- EAST ELEVATION -
- COWORKING BUILDING
- ESC 1:200



- SECTION AA
- COWORKING BUILDING
- ESC 1:200



- NORTH ELEVATION -COWORKING / RESTAURANT BUILDING

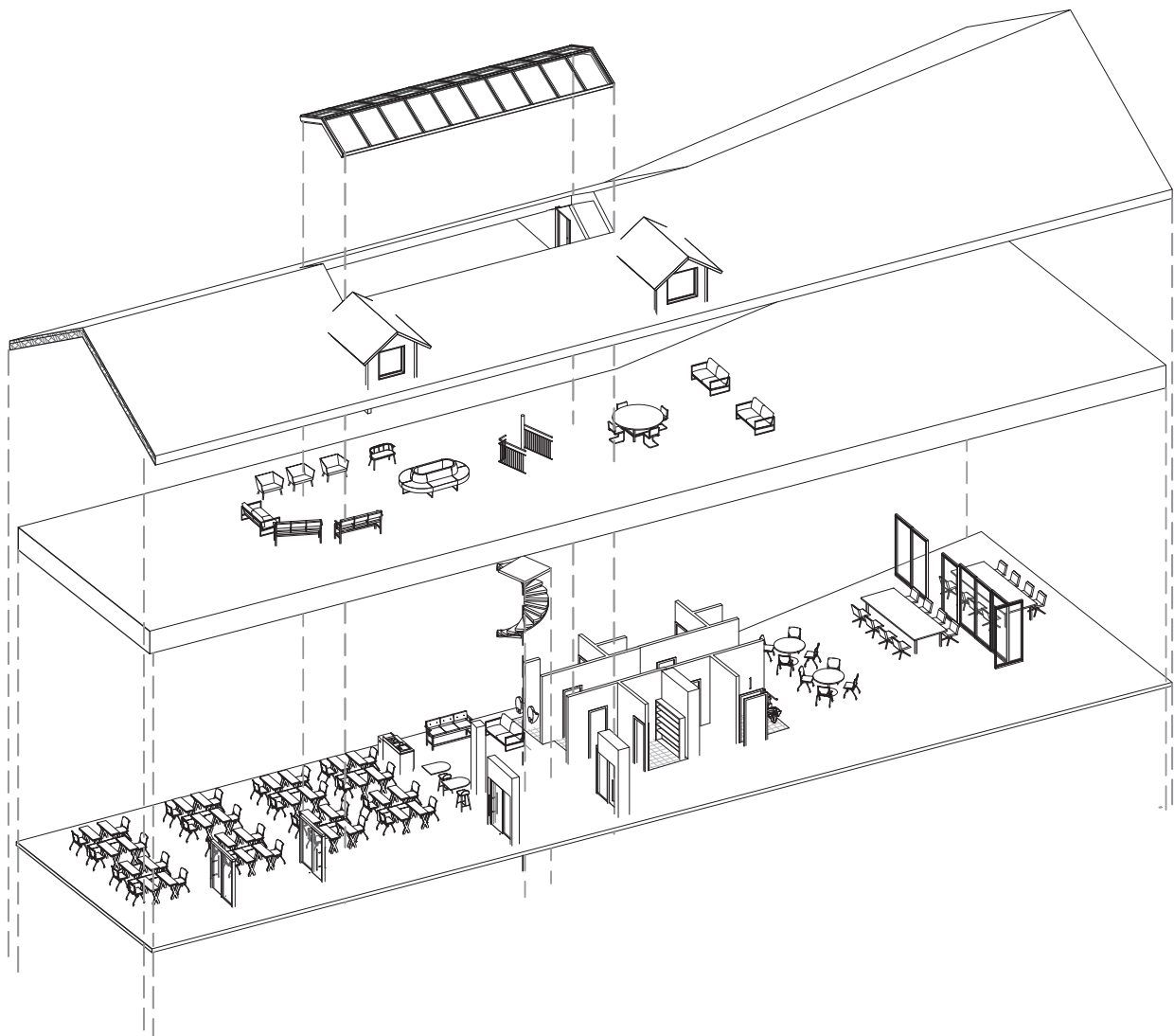
0 1 5 10



- SOUTH ELEVATION -COWORKING / RESTAURANT BUILDING

- ESC 1:200

0 1 5 10



• AXONOMETRIC COWORKING GARAGE



OFFICE MODULAR MOBILIARY



- BREWERY BAR INTERIOR

WHICH FITS PERFECTLY TO THE OLD USE OF THE AREA, THE BREWERY.

WE USED THIS MOTIF TO DESIGN A SPACE FOR INCREASING PRODUCTIVITY

THROUGH REFRESHMENT AND MUTUAL COMMUNICATION.

BESIDES THE COWORKING BUILDINGS, THERE IS ALSO A RESTAURANT AND A

BREWERY, THAT CAN BE USED IN THE NIGHT TIME.

THE PROJECT AIMED TO INTEGRATE BOTH PARTS OF A PERSONS DAY, THE

DAY TIME (COWORKING AND LEISURE AREAS) AND THE NIGHT TIME (THE RE-

STAURANT AND BREWERY).

- BREWERY GARDEN PERSPECTIVE

