

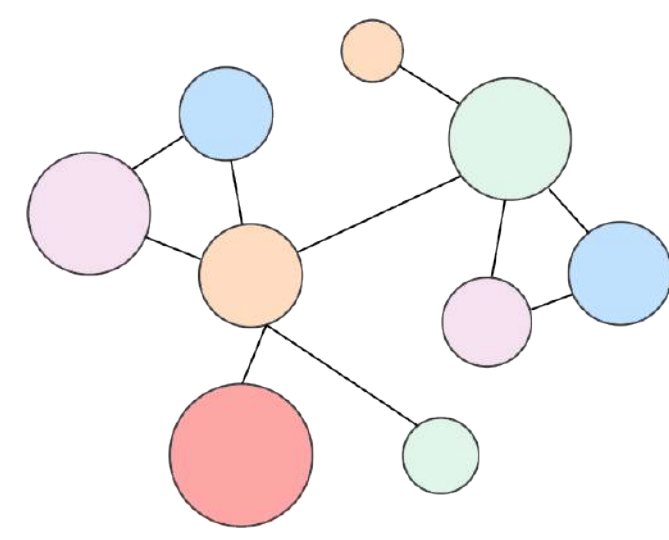
ATELIER SEHO

SEHO HANA  
Majnusova Alzbeta

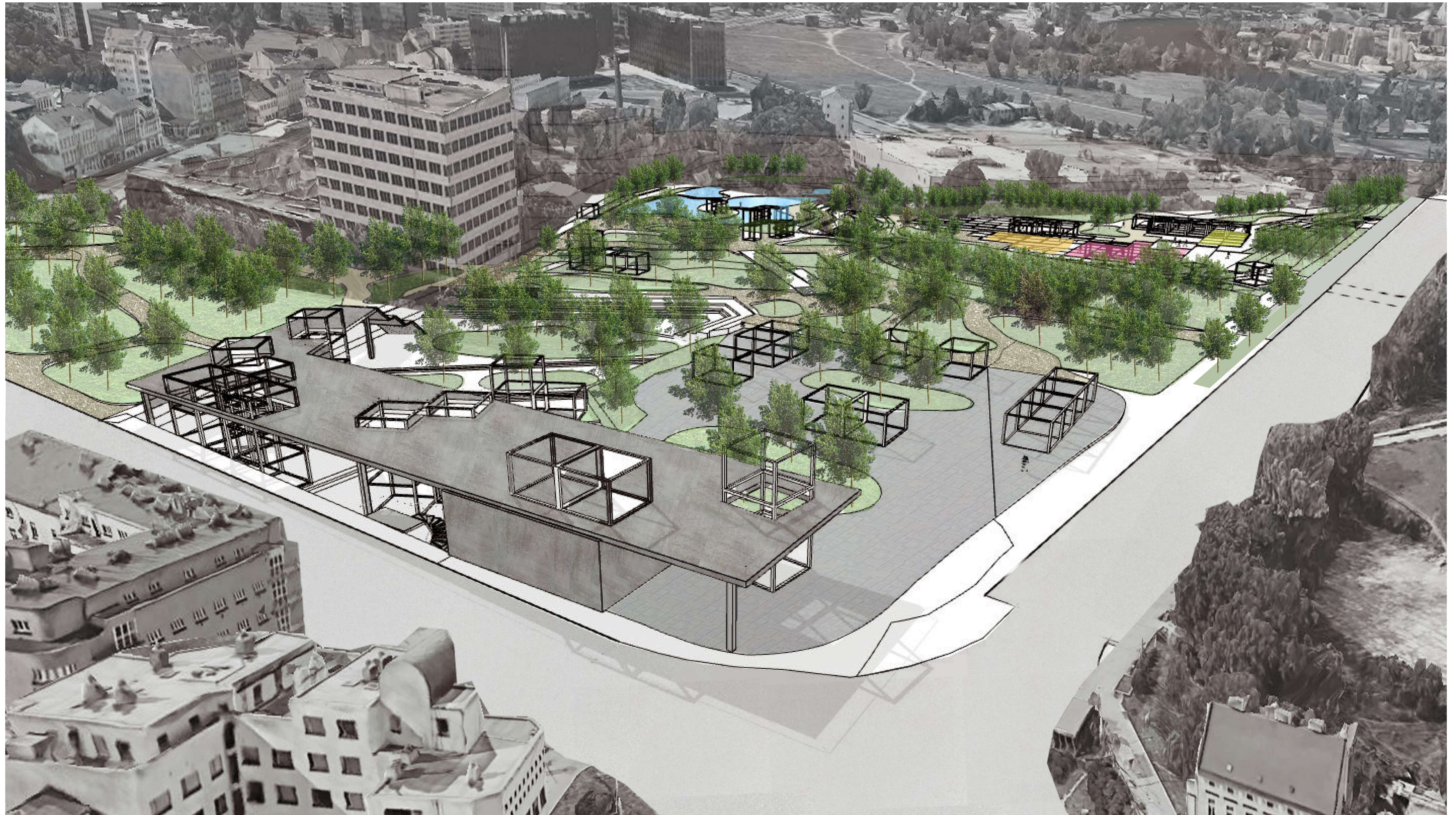
FINAL PROJECT

Palmovka





## PALMOVKA PARK





UPPER CONNECTION

At the end of the integration part which outlines a limit of the park, another north connection is constructed with large steps and slopes, blended in existing vegetation. From the bridge down the park, the view slowly offers a wide perspective on the low part of the park.

TUNNEL

A pedestrian tunnel enables connection as a direct access between the north part of the bridge with the south part, since it is important in that zone to access transportation stops quite fast. This tunnel is topped with a staircase and slopes in order for people to access the top of the bridge from the park easily as well.

JEWISH CEMETARY

The cemetery is preserved as the current situation, with vegetation limits and small accesses in order to keep the respect of its values.



CROSSROAD

The most intense point has been reactivated by creating a core articulating a plaza, a terrasse and an entrance to the underground metro. Cultural activities are held on the plaza while vegetation brings up fresh air and pleasant atmosphere to the urban facilities which is mainly transportation. The circulation is very fluid, with easy access to any destination, including slopes for disabled people.

PLAZA

Temporary structures will attend several exhibitions and events throughout the years and will re-dynamize the crossroad which is currently only due to pressure and stress, and urban facilities. The ground is made of cobblestone which reminds streets and spirit of Prague.

METRO ENTRANCE

The topography of the terrain is used to create large steps and vegetation zones, that invite people to the metro and make the entrance more pleasant to go through. Some urban facilities such as benches, terrariums and wider spaces enable people to wait for their transport in an entertaining place.

TERRASSE

A shelter to the metro/tram stop has been constructed in order to give shade, intimacy, particular shape to the metro entrance, and many 360° perspectives from the terrasse it offers. When you stand on its roof, you are able to admire the whole park through the vegetation and get a different vision of the city. The structure will partly use columns, partly use modules. Those modules will spike the terrasse and bring light for the metro entrance, as well as interactions between people up and down. Another use will be assigned on some of them such as a terrarium or an elevator in order to make them completely useful.

PASSAGE

This part of the park enables access from the plaza to the actual nature part, as well as a gathering point while enjoying green areas and where people can observe all of what is happening around. Vegetation steps are marrying the topography and leading to the pond, as offering some different perspectives on the park from the highest part of it.

STEPS

The link between the water area and the integration part plays with the topography : concrete steps have been poured all along the pound letting greens areas in between somewhere, creating alternative paths depending on where you stand. Slopes have been planned on both sides according to the height level of the terrain.

POUND

This new artificial pound makes an important element of the park since it creates a natural barrier to existing buildings and separates the nature from the city atmosphere. It collects rainwater and reserve it in case of dry period. This area will call people to relax and enjoy the symphony of water, and its benefits.

PLAYGROUND

An area far from the city : with temporary structures adapted in bar and restaurant, cozy room, play games for children, it can be those pleasure activities among the cultural ones people need in Palmovka. Made with rubber stone ground and concrete sidewalks, surrounded by vegetation, the playground adds another particularity to the park by allowing people to find a refuge in the city.

CYCLING SLOPE

From the road leading to Zizkov (along the access to the terrasse) to a small road in the south (along the passage and the pond), a direct slope made of concrete has been planned. With the two other connections to the bridge, this slope makes the park completely integrated in the city.





**CONCEPT**

The concept of our park consists of three zones which illustrate the term “compound”. Those three areas - core, passage, integration, are shaped as connecting with the context and its activity by their use. People flow creates paths where their inter-sections generate interactive points through the park, arranging main accesses which brings up unicity. Temporary structures, which will be rectangular shaped modules, get a different use following the area as adapted to the function, and offer several atmospheres to the park and to the people throughout the years, by providing new programs - culture and pleasure. The key to that division was the surrounding urban areas and existing facilities according to the new functions.

**CORE**

Including the plaza, the metro entrance, and the terrasse ; defined by the main point which is the crossroad and an important intensity of use ; this part needed to be very transparent and free, open space and easy to go through, functional, adapted to anyone, attracting attention, beautiful.

The atmosphere will be determined by cultural events.

**PASSAGE**

Including the vegetation steps and the pound, driving the cycling slope all the way down ; defined by a fluid flow of people and an ascending topography ; this part needed to invite and welcome people inside the park, discovering all its activities and facilities, its values and benefits.

The atmosphere will be determined by finding its own world - relaxing mood and nature observation.

**INTEGRATION**

Including playground and offering several connections from all sides ; defined by the bridge and a wide space melted in the park ; this area needed to articulate the bridge with the park and its Jewish cemetery, as well as place people 'spirit far away from the city.

The atmosphere will be determined by interactions between people.





**INTESITY OF USE**



**CONNECTIONS NEEDED / POINTS OF INTEREST**



**ACCESSES**



**MODULES**

Cubic or rectangular shaped, their morphology and materials enable flexibility in case wishes change with the time ; the modules can be combined together, in height as in length, removed, shifted, or moved around.

- Uses :
- Core : Non-permanent exhibitions and events
  - Passage : Relax, read and chill around the water space, enjoy nature
  - Integration : Play, sport, drink, talk



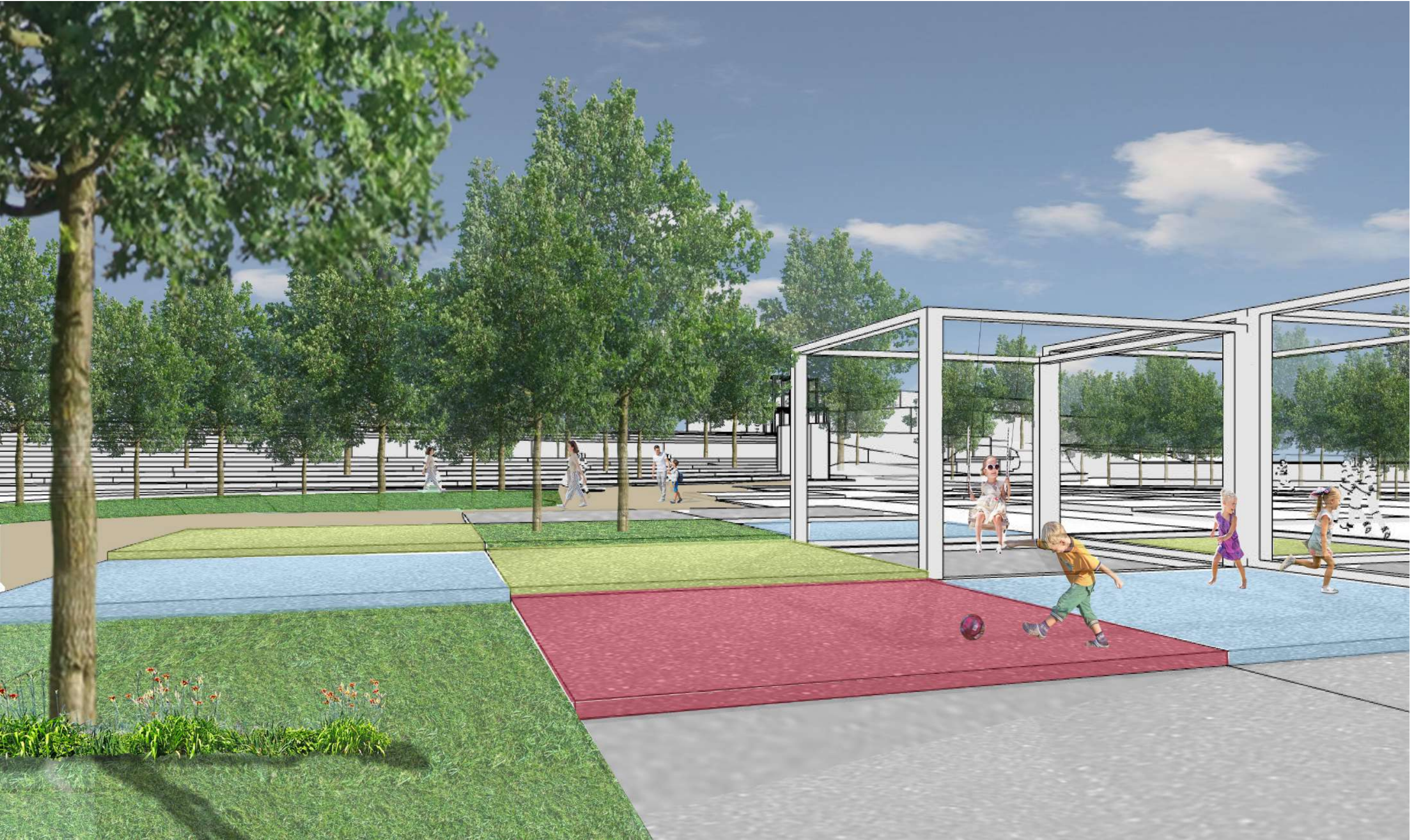


TERRACE - CORE



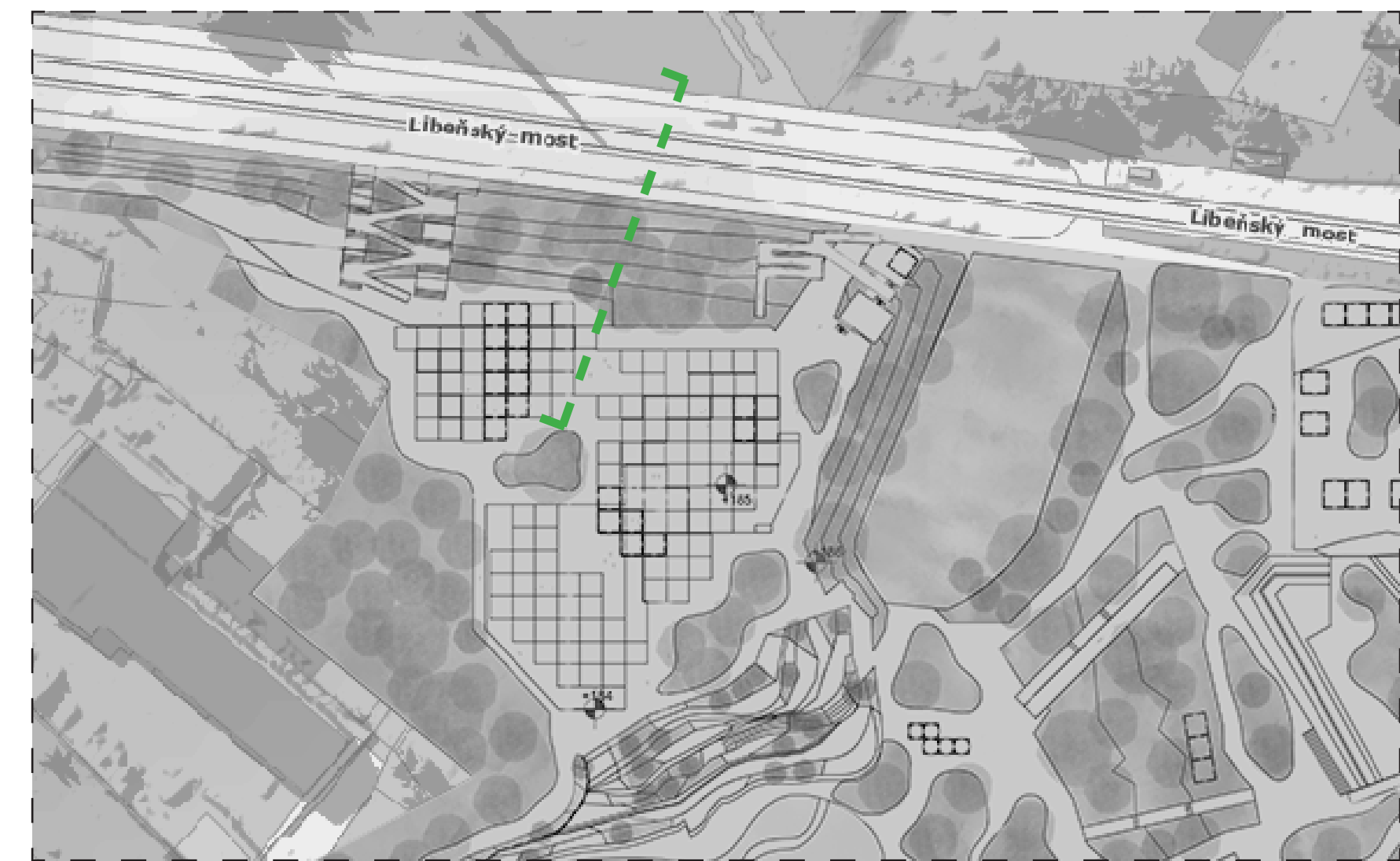
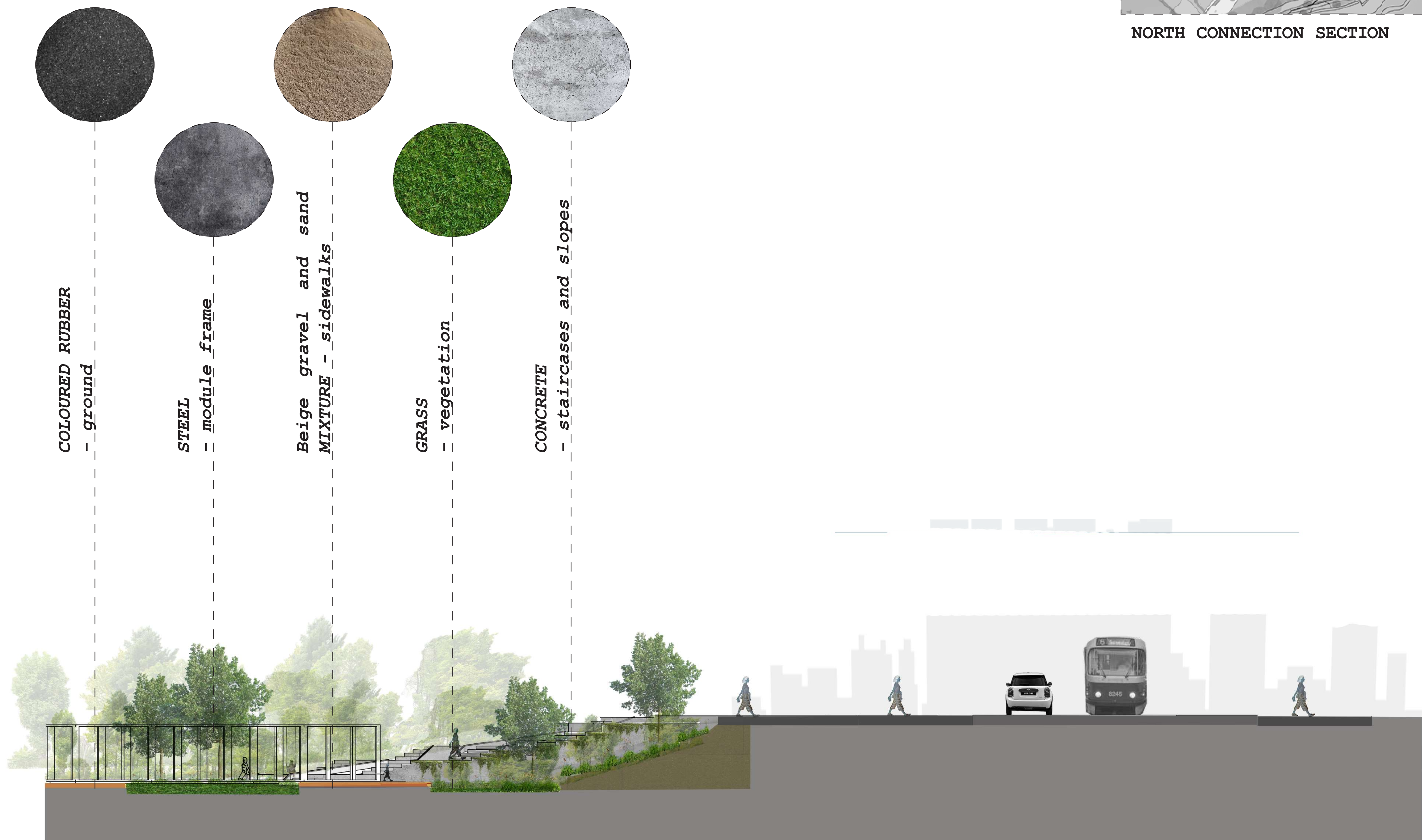


North connection



Playground





NORTH CONNECTION SECTION

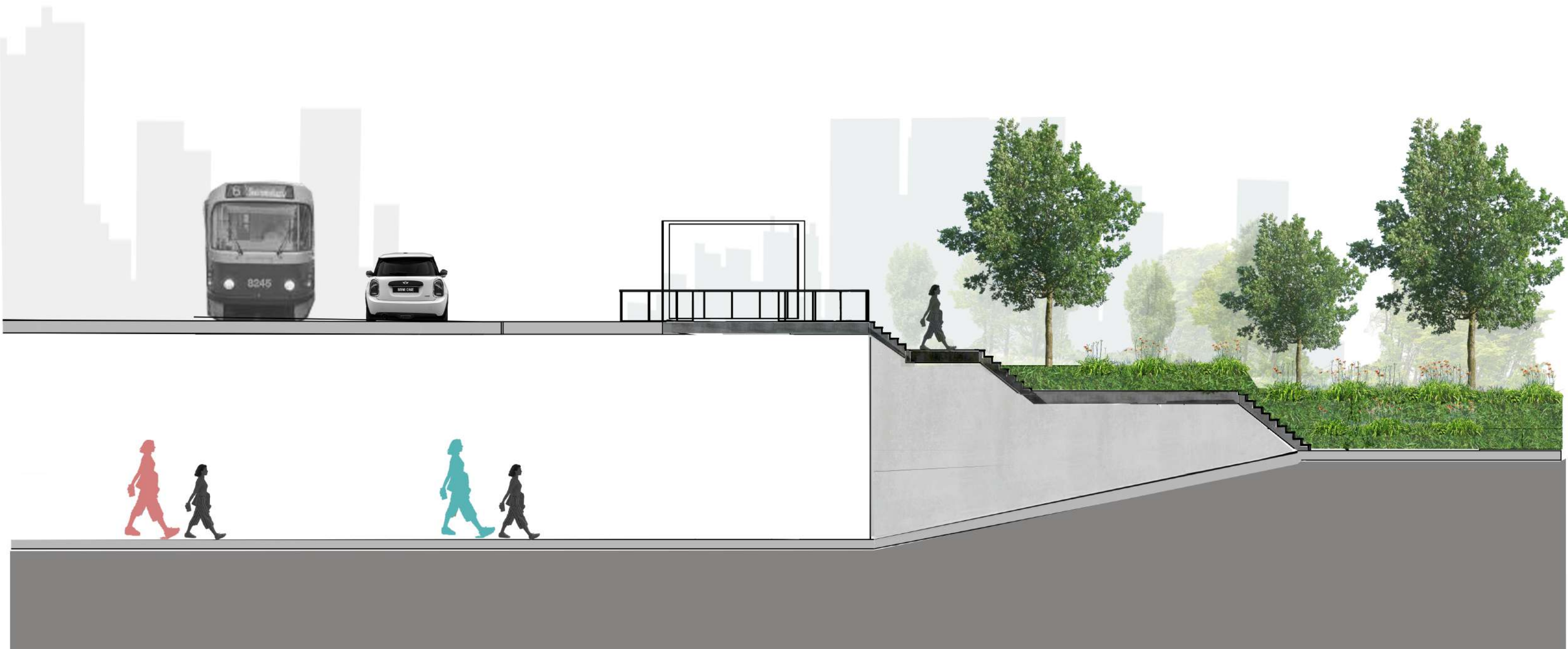




Tunnel connection



TUNNEL SECTION

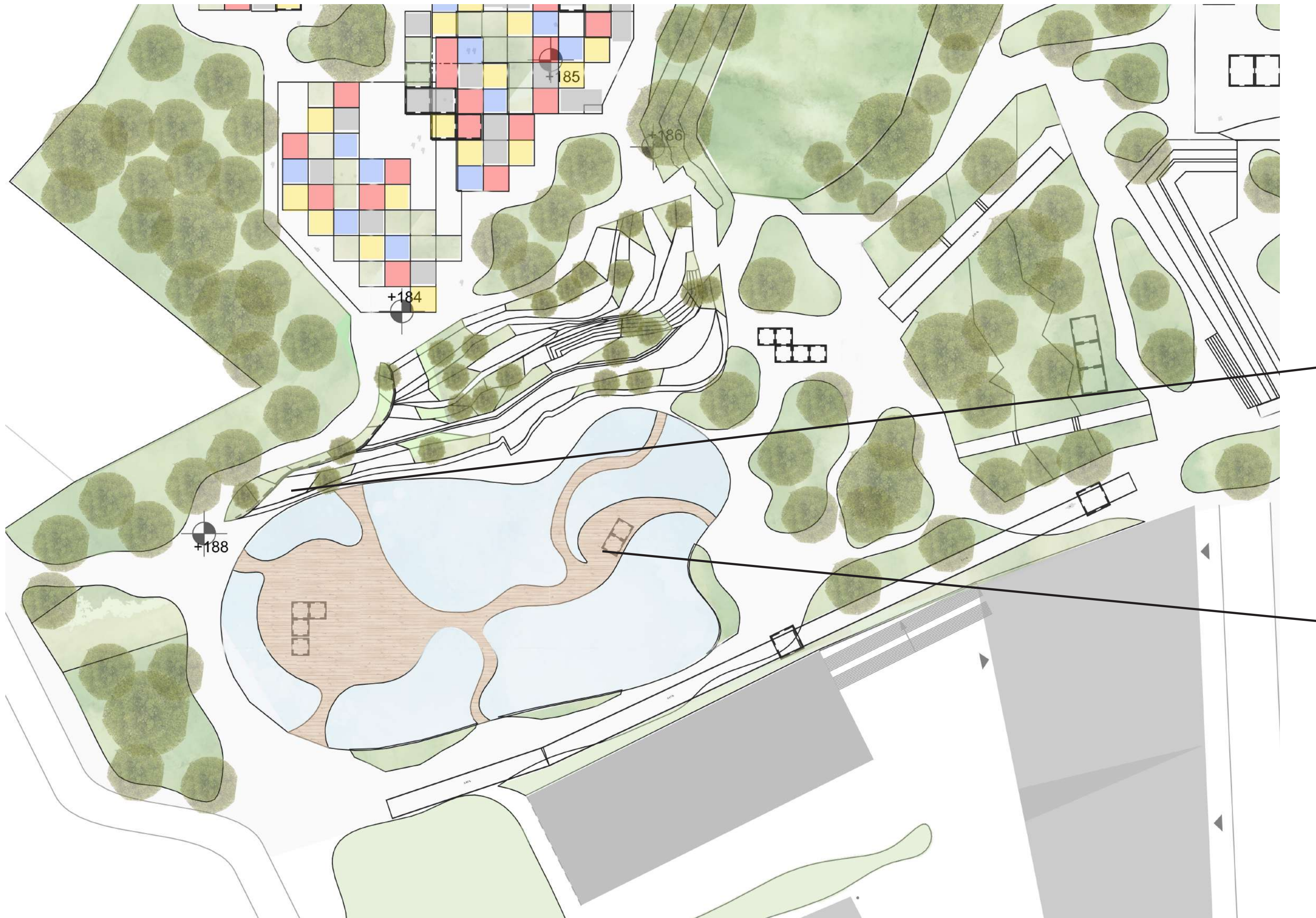


TUNNEL SECTION



1:200



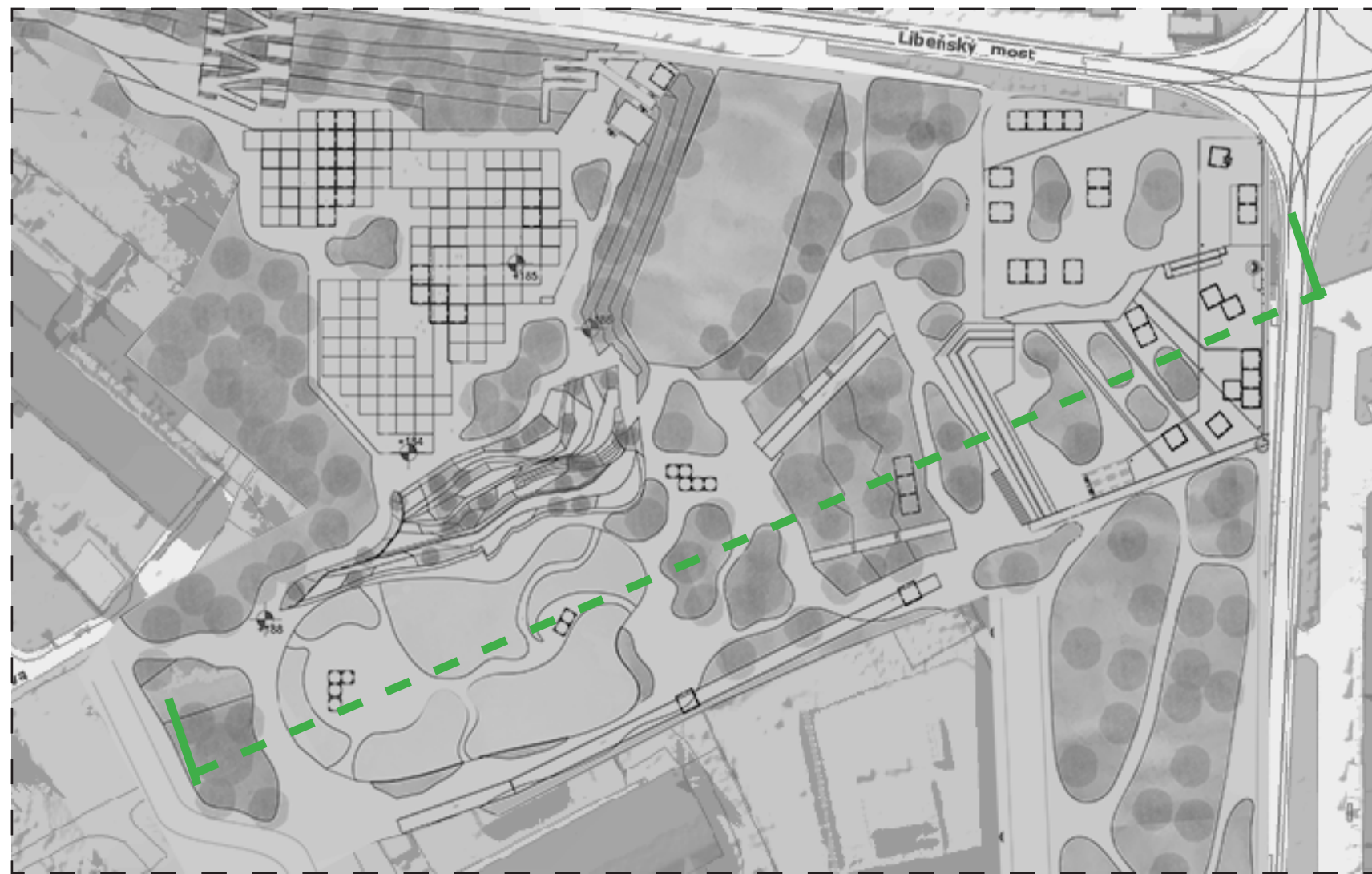


Steps from passage to interaction

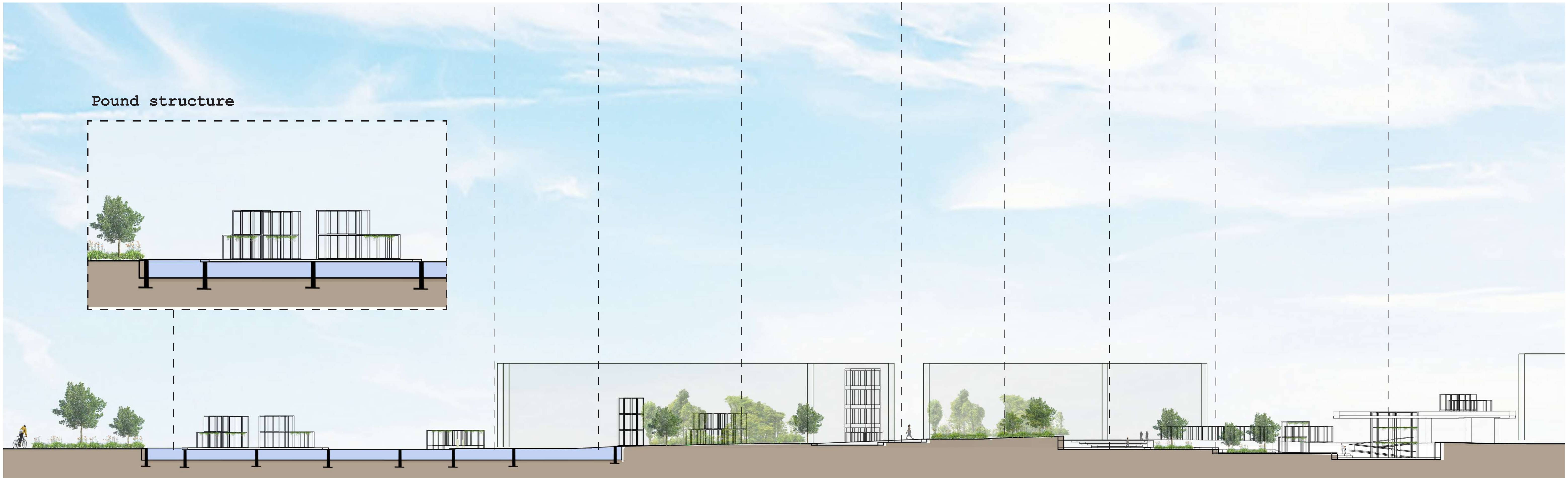
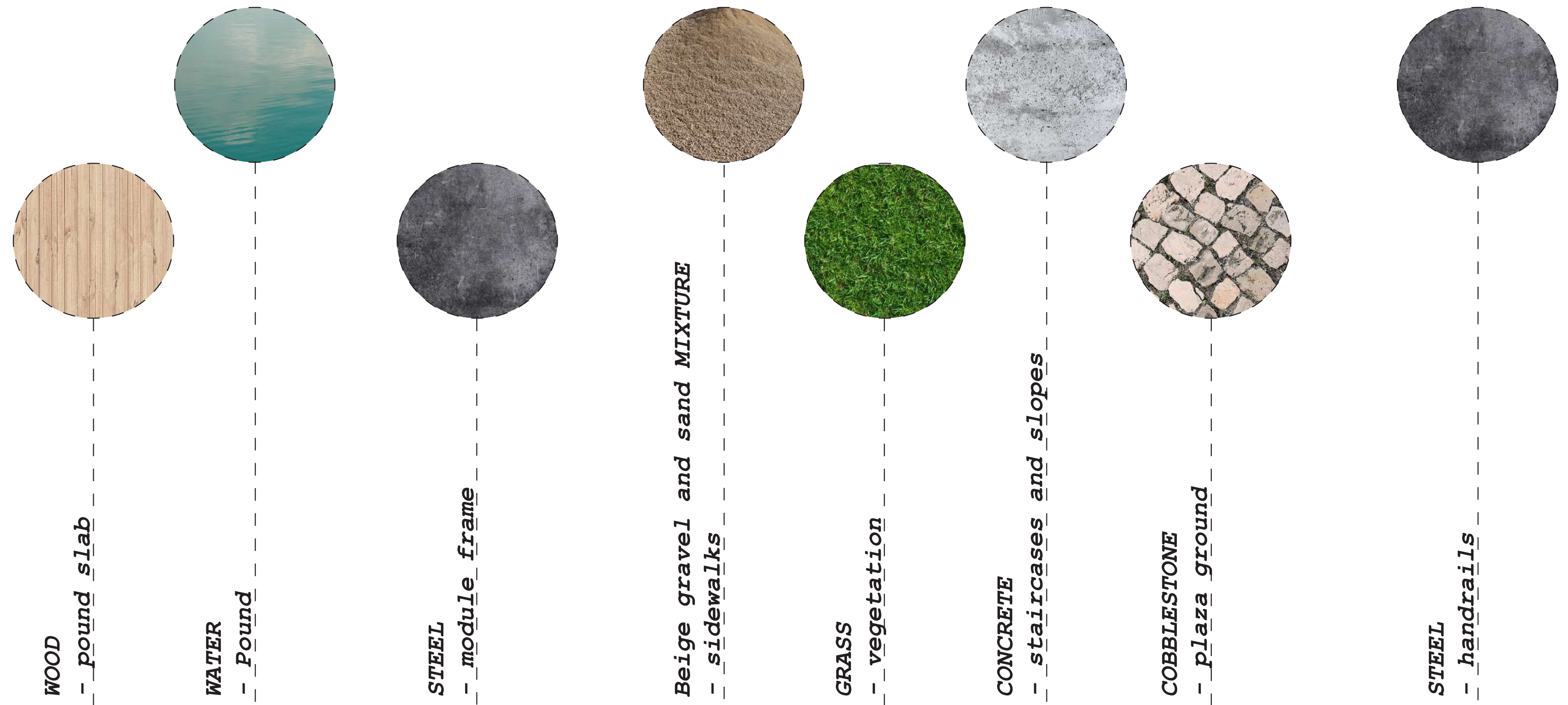


Pound





TUNNEL SECTION



CORE AND PASSAGE SECTION







Core



Metro entrance





Metro entrance



CORE SECTION



CORE SECTION



1:200



