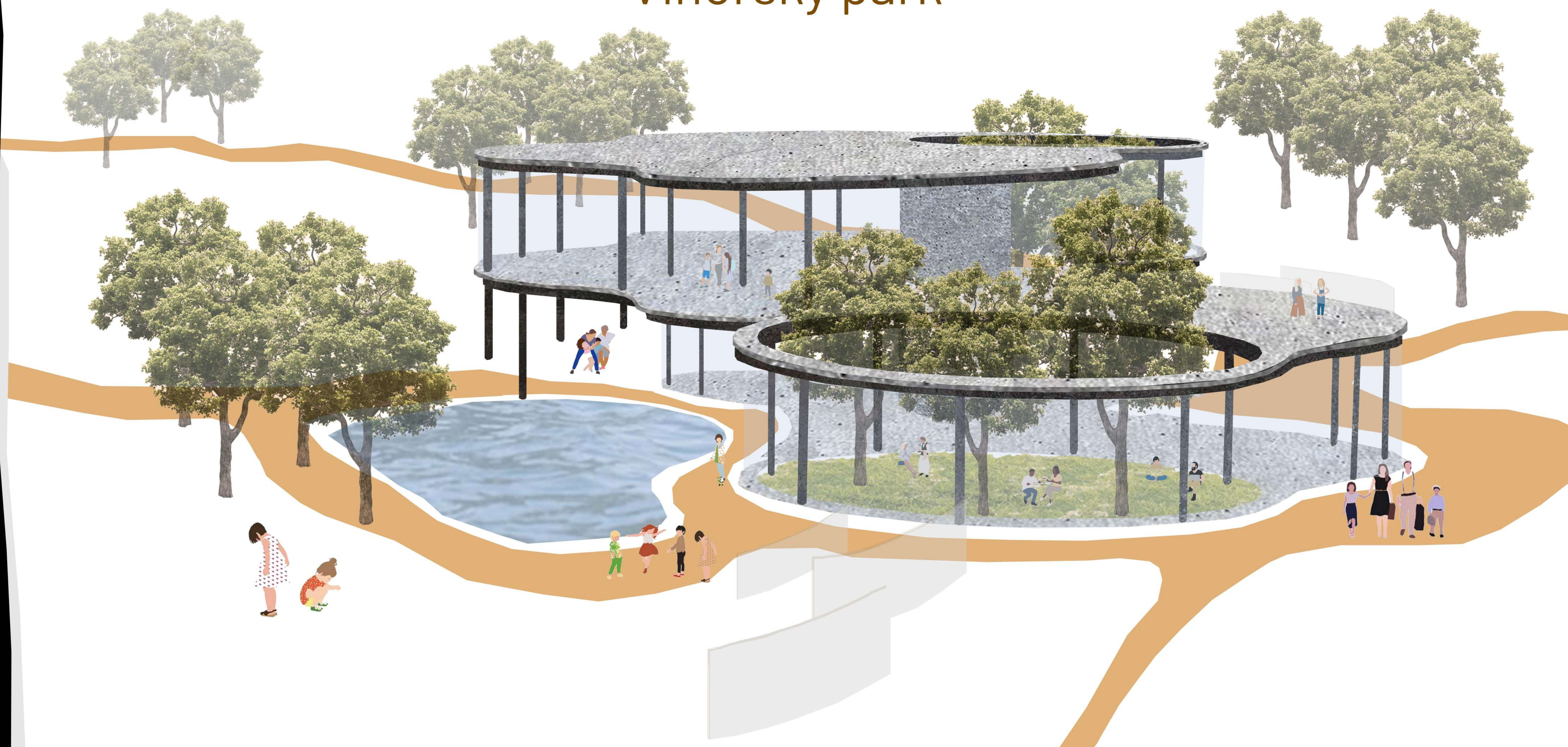


# NATURE INTERPRETATION CENTER

## Vinořský park



**NATURE INTERPRETATION CENTER**

The proposal is an approach to the Vinořský Park through a nature interpretation center in the heart of Vinoř, in front of the local cemetery.

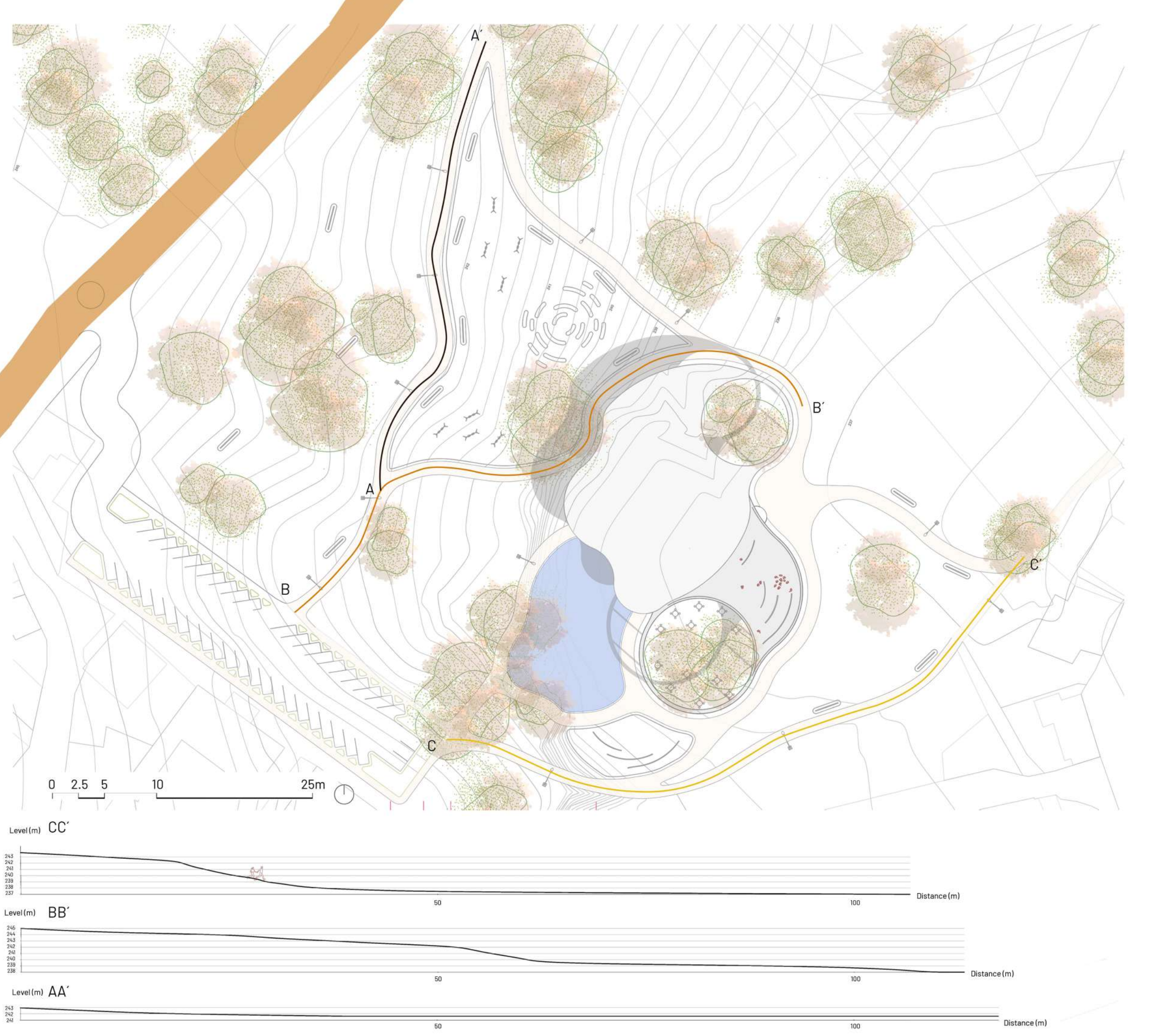
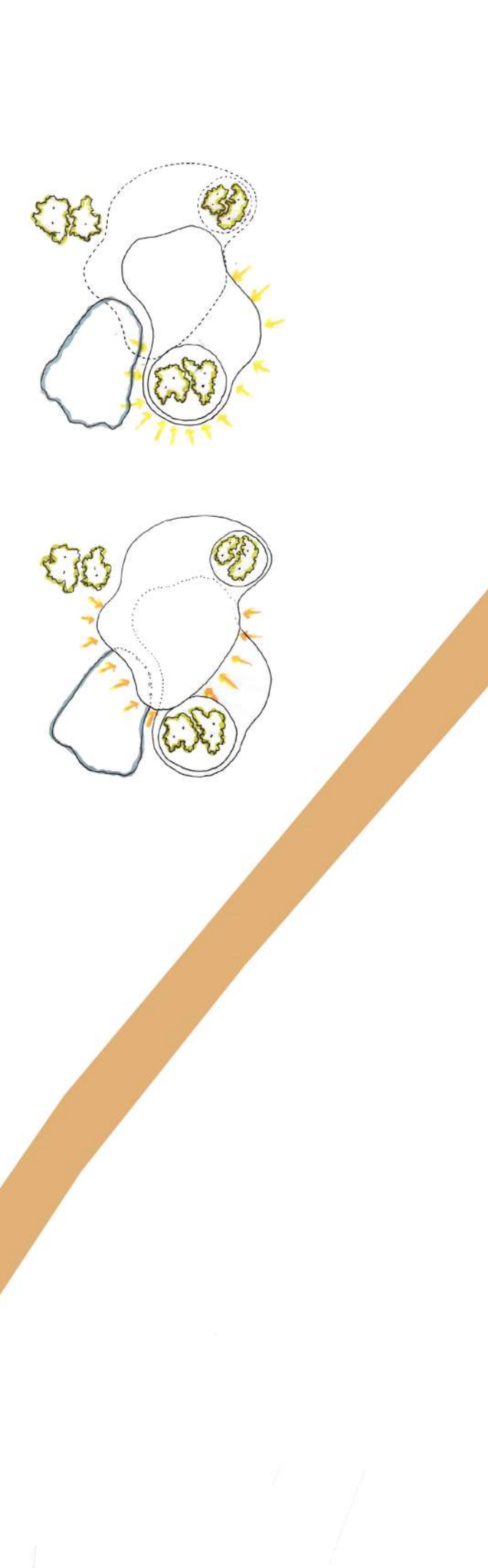
The location of the plot allows a direct connection with the main street, the Old Naměstí and the nearby lakes.

For the access to the center several paths are defined, whose slope allows access to handicapped people, ensuring accessibility to everyone. Some of these paths leave from the visitors' parking lot and also connect with the children's play area, near the center, but also near the natural area.

The location for this center has been planned generating a total connection with the pond, thus defining a contour of the building that follows the shape of the lake. Originating organic forms and creating a new atmosphere without boundaries between the interior and exterior.

The center is planned in two levels, the upper level being located in a cantilevered position in the center part of the lake, with a total vision of the lake. The selected exterior enclosure, glass allows a total vision in the 360 degrees, as well as a total integration with nature, not only in the shared vertical spaces but in the whole perimeter of the building. This also guarantees natural lighting in the interior.

The first floor has a cafeteria and bookstore, along with a circular terrace that looks out over the open air, where you can find native vegetation of the area. In addition, there is also the elevator that communicates with the upper floor in which there are multifunctional spaces that allow variable exhibitions depending on the theme, as well as a stationary part of interpretation for the Vinoř environment. On the terrace there are also explanatory panels. For times of more stable weather conditions, exhibitions are set up around the pond, to make it more interactive with the environment.



**NATURE INTERPRETATION CENTER**

The proposal is an approach to the Vinořský Park through a nature interpretation center in the heart of Vinoř, in front of the local cemetery.

The location of the plot allows a direct connection with the main street, the Old Naměstí and the nearby lakes.

For the access to the center several paths are defined, whose slope allows access to handicapped people, ensuring accessibility to everyone. Some of these paths leave from the visitors' parking lot and also connect with the children's play area, near the center, but also near the natural area.

The location for this center has been planned generating a total connection with the pond, thus defining a contour of the building that follows the shape of the lake. Originating organic forms and creating a new atmosphere without boundaries between the interior and exterior.

The center is planned in two levels, the upper level being located in a cantilevered position in the center part of the lake, with a total vision of the lake. The selected exterior enclosure, glass allows a total vision in the 360 degrees, as well as a total integration with nature, not only in the shared vertical spaces but in the whole perimeter of the building. This also guarantees natural lighting in the interior.

The first floor has a cafeteria and bookstore, along with a circular terrace that looks out over the open air, where you can find native vegetation of the area. In addition, there is also the elevator that communicates with the upper floor in which there are multifunctional spaces that allow variable exhibitions depending on the theme, as well as a stationary part of interpretation for the Vinoř environment. On the terrace there are also explanatory panels. For times of more stable weather conditions, exhibitions are set up around the pond, to make it more interactive with the environment.



**NATURE INTERPRETATION CENTER**

The proposal is an approach to the Vinořský Park through a nature interpretation center in the heart of Vinoř, in front of the local cemetery.

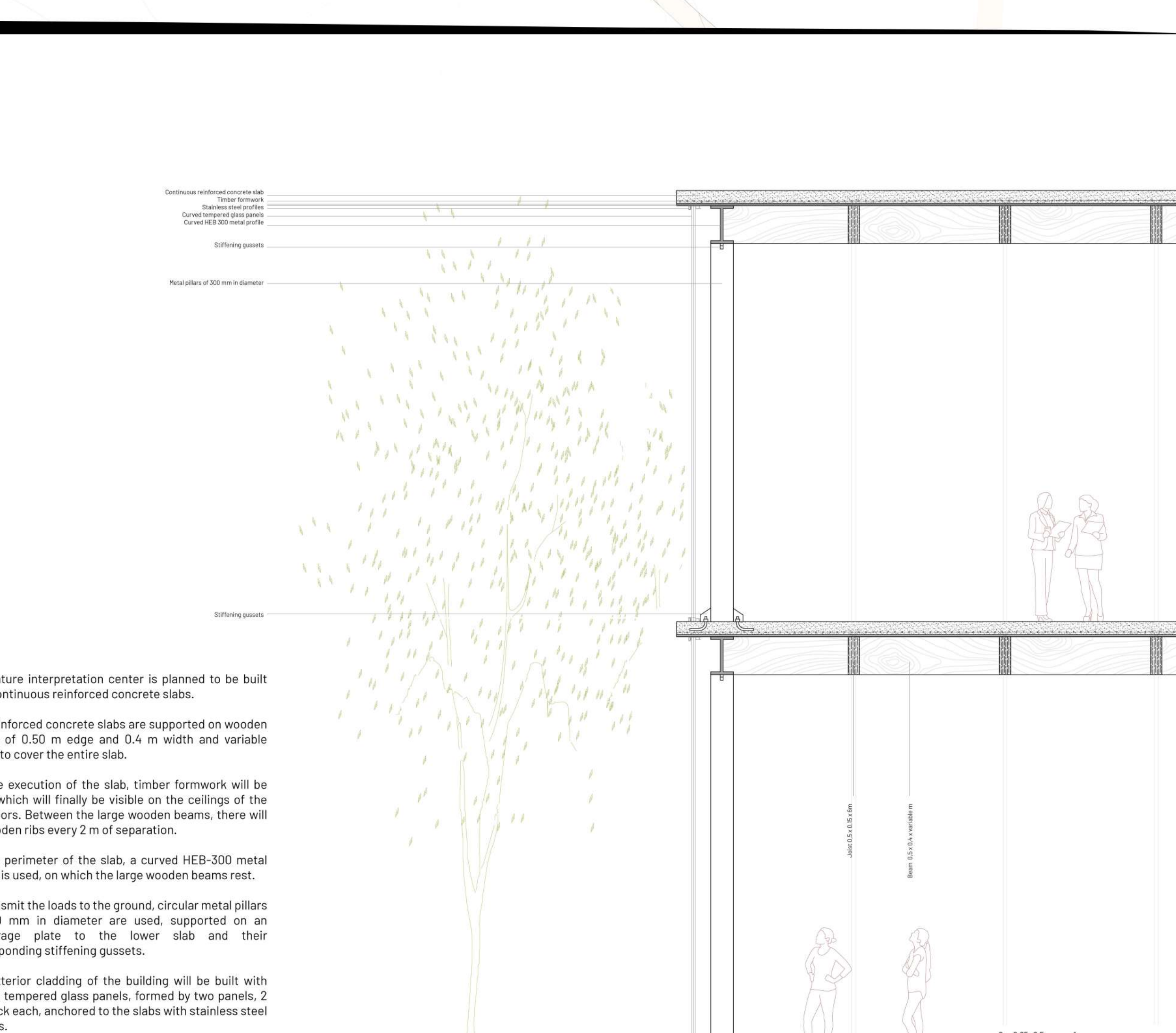
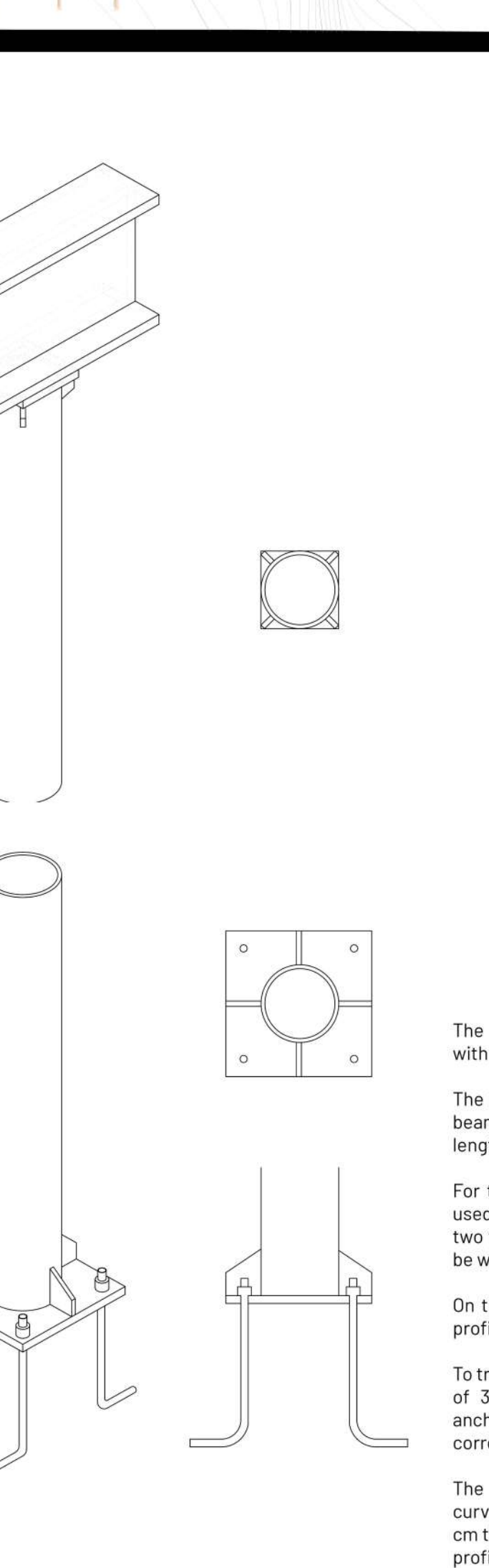
The location of the plot allows a direct connection with the main street, the Old Naměstí and the nearby lakes.

For the access to the center several paths are defined, whose slope allows access to handicapped people, ensuring accessibility to everyone. Some of these paths leave from the visitors' parking lot and also connect with the children's play area, near the center, but also near the natural area.

The location for this center has been planned generating a total connection with the pond, thus defining a contour of the building that follows the shape of the lake. Originating organic forms and creating a new atmosphere without boundaries between the interior and exterior.

The center is planned in two levels, the upper level being located in a cantilevered position in the center part of the lake, with a total vision of the lake. The selected exterior enclosure, glass allows a total vision in the 360 degrees, as well as a total integration with nature, not only in the shared vertical spaces but in the whole perimeter of the building. This also guarantees natural lighting in the interior.

The first floor has a cafeteria and bookstore, along with a circular terrace that looks out over the open air, where you can find native vegetation of the area. In addition, there is also the elevator that communicates with the upper floor in which there are multifunctional spaces that allow variable exhibitions depending on the theme, as well as a stationary part of interpretation for the Vinoř environment. On the terrace there are also explanatory panels. For times of more stable weather conditions, exhibitions are set up around the pond, to make it more interactive with the environment.



**NATURE INTERPRETATION CENTER**

The proposal is an approach to the Vinořský Park through a nature interpretation center in the heart of Vinoř, in front of the local cemetery.

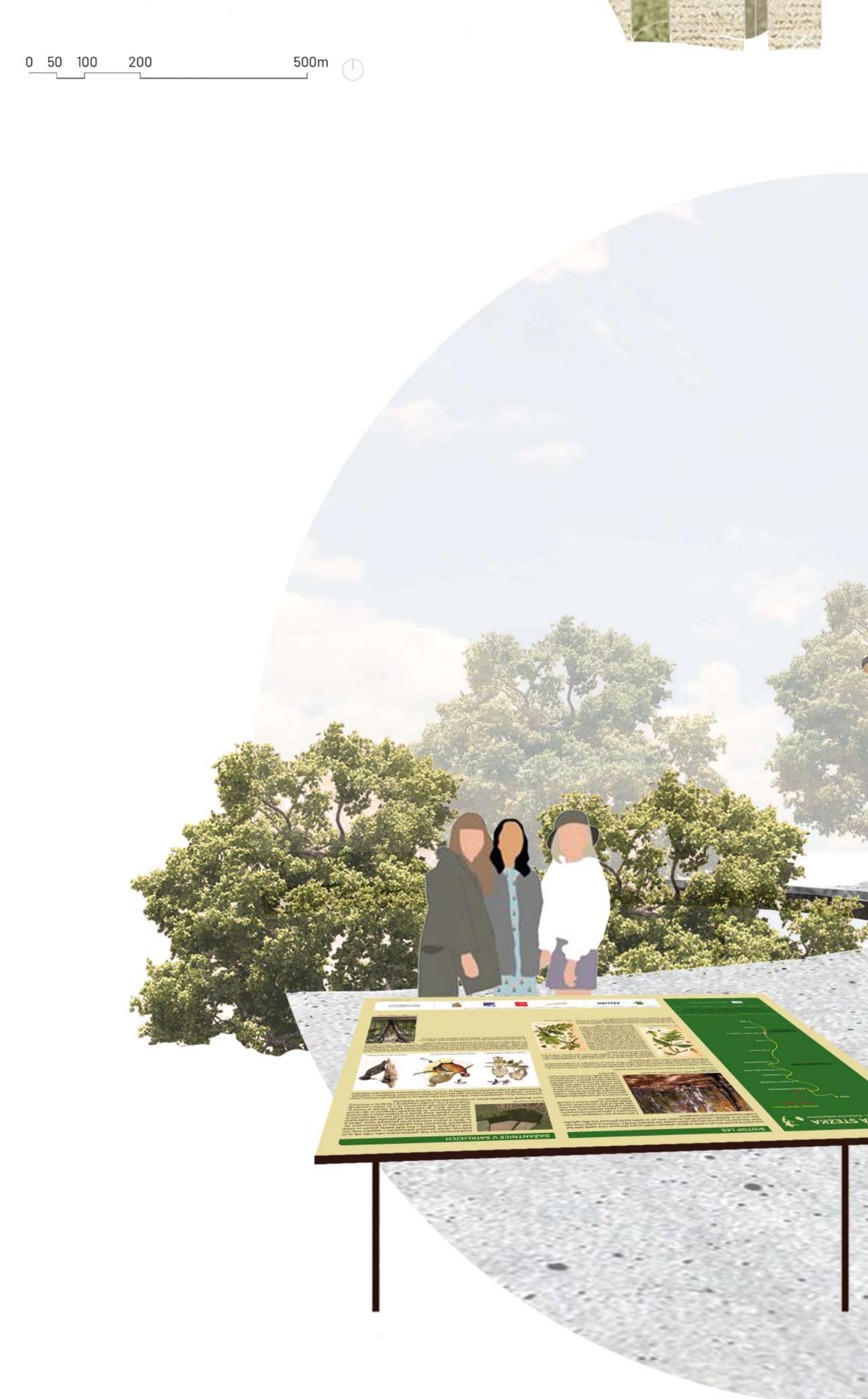
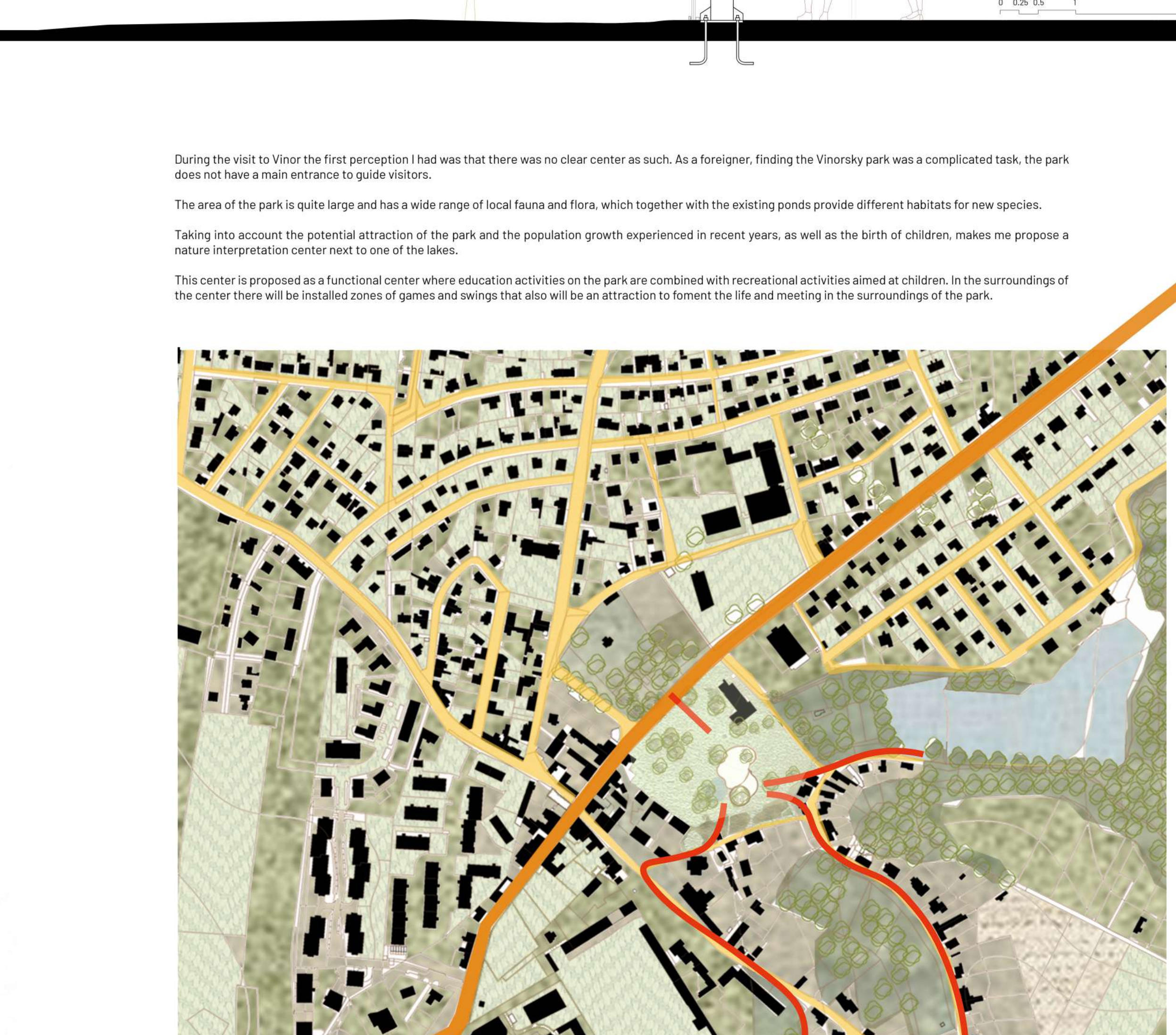
The location of the plot allows a direct connection with the main street, the Old Naměstí and the nearby lakes.

For the access to the center several paths are defined, whose slope allows access to handicapped people, ensuring accessibility to everyone. Some of these paths leave from the visitors' parking lot and also connect with the children's play area, near the center, but also near the natural area.

The location for this center has been planned generating a total connection with the pond, thus defining a contour of the building that follows the shape of the lake. Originating organic forms and creating a new atmosphere without boundaries between the interior and exterior.

The center is planned in two levels, the upper level being located in a cantilevered position in the center part of the lake, with a total vision of the lake. The selected exterior enclosure, glass allows a total vision in the 360 degrees, as well as a total integration with nature, not only in the shared vertical spaces but in the whole perimeter of the building. This also guarantees natural lighting in the interior.

The first floor has a cafeteria and bookstore, along with a circular terrace that looks out over the open air, where you can find native vegetation of the area. In addition, there is also the elevator that communicates with the upper floor in which there are multifunctional spaces that allow variable exhibitions depending on the theme, as well as a stationary part of interpretation for the Vinoř environment. On the terrace there are also explanatory panels. For times of more stable weather conditions, exhibitions are set up around the pond, to make it more interactive with the environment.



**NATURE INTERPRETATION CENTER**

The proposal is an approach to the Vinořský Park through a nature interpretation center in the heart of Vinoř, in front of the local cemetery.

The location of the plot allows a direct connection with the main street, the Old Naměstí and the nearby lakes.

For the access to the center several paths are defined, whose slope allows access to handicapped people, ensuring accessibility to everyone. Some of these paths leave from the visitors' parking lot and also connect with the children's play area, near the center, but also near the natural area.

The location for this center has been planned generating a total connection with the pond, thus defining a contour of the building that follows the shape of the lake. Originating organic forms and creating a new atmosphere without boundaries between the interior and exterior.

The center is planned in two levels, the upper level being located in a cantilevered position in the center part of the lake, with a total vision of the lake. The selected exterior enclosure, glass allows a total vision in the 360 degrees, as well as a total integration with nature, not only in the shared vertical spaces but in the whole perimeter of the building. This also guarantees natural lighting in the interior.

The first floor has a cafeteria and bookstore, along with a circular terrace that looks out over the open air, where you can find native vegetation of the area. In addition, there is also the elevator that communicates with the upper floor in which there are multifunctional spaces that allow variable exhibitions depending on the theme, as well as a stationary part of interpretation for the Vinoř environment. On the terrace there are also explanatory panels. For times of more stable weather conditions, exhibitions are set up around the pond, to make it more interactive with the environment.

