



LÝDIA KUBEKOVÁ,
1. ROČNÍK MAGISTERSKÉHO ŠTÚDIA
WINTER TERM 2020, ATS

COMMUNITY CENTER STVOLÍNKY
STVOLÍNKY - FORMER CASTLE COURTYARD
ČESKÁ LÍPA REGION, CZECH REPUBLIC

DESIGN STUDIO EFLER (EFLER - TOMSA - STOČES)
DEPARTMENT OF ARCHITECTURAL CONSERVATION
FACULTY OF ARCHITECTURE, CTU IN PRAGUE



SITE LEGEND

- 1. CASTLE
- 2. CHURCH
- 3. PORTAL
- 4. BEEHOUSE
- 5. HERBAL FLOWERBED
- 6. BOBŘÍ STREAM
- 7. COMMUNITY CENTER
- 8. CANTEEN
- 9. ACCOMODATION
- 10. RIVER'S CROSSING
- 11. ARTIFICIAL LAKE
- 12. WAY TO BAROQUE GARDEN
- 13. PARKING LOT
- 14. CAR ACCESS ROAD
- 15. BOTANIQUE GARDEN
- 16. MAIN GARDEN AXIS

VIEWS M 1:150

0 1 5 15 M

Stvolínky is a village in the Liberec region near Česká Lípa town. Most iconic for this place are the local castle and church in the center of it. The church is in desperate need for renovation and new function, but the castle became a place for community activities such as festivals ect.

The aim of this project is to create new opportunities in the village - create new jobs for locals, make the village more attractive to visitors, create a center for local community.

Three buildings are designed on the site next to the castle. First one is multifunctional-it contains garden, warehouse and community center to compensate for castle's spaces which will be used as museal exposition.

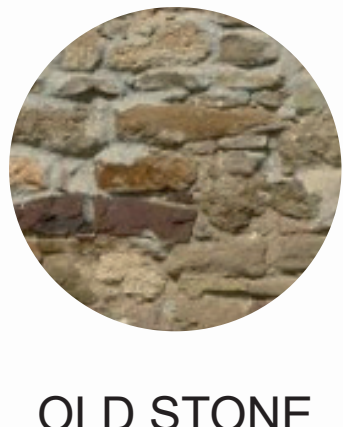
Second building is an accomodation for visitors of the village - the main aim here is for cyclo-turism in surrounding area and groups which will use the community center. Building also contains cafeteria.

The third one is a cantine for accomodated visitors and out of the season for local elderly people. In this building there also is a reception for accomodation and storage place for bicycles.

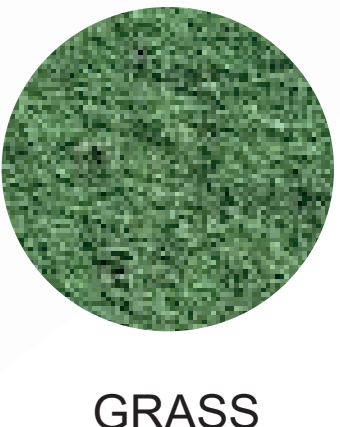
EXTERIOR MATERIALS



BROKEN STONE
PAVEMENT



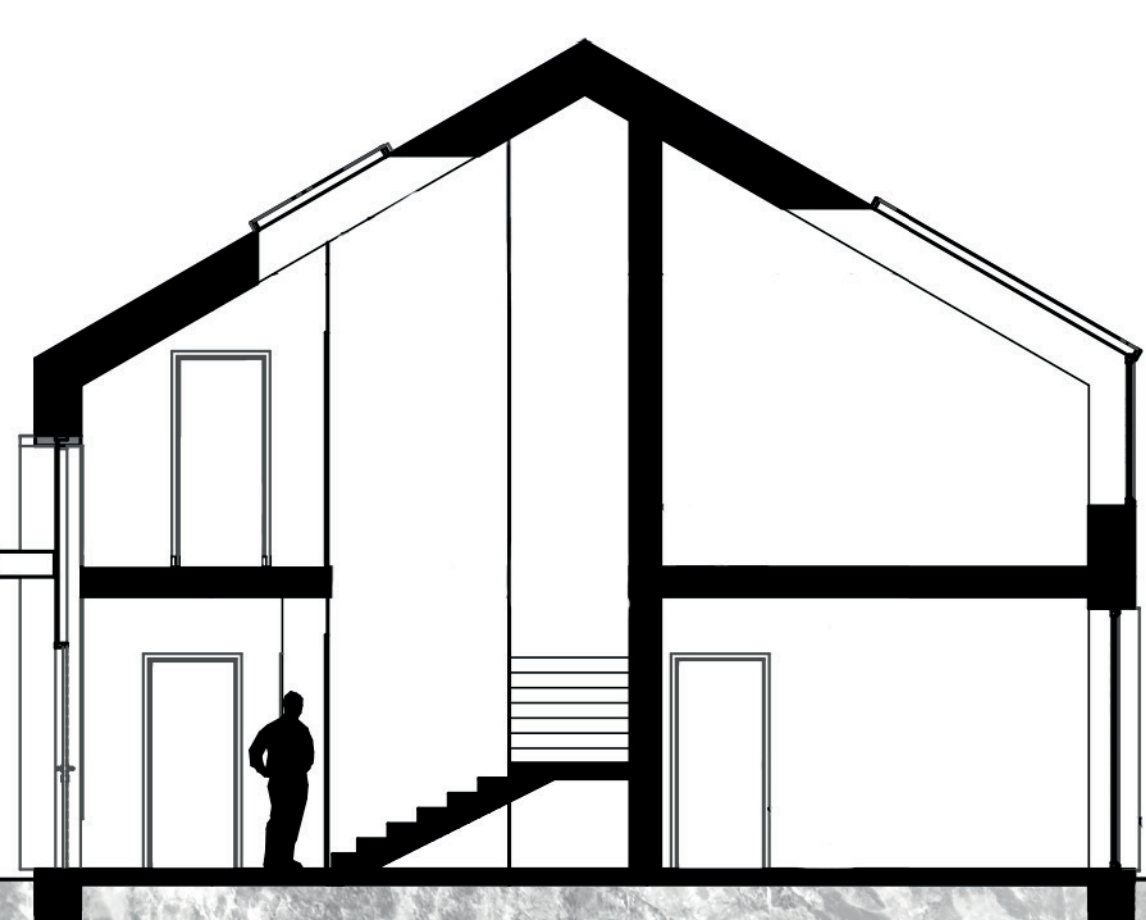
OLD STONE
WALL



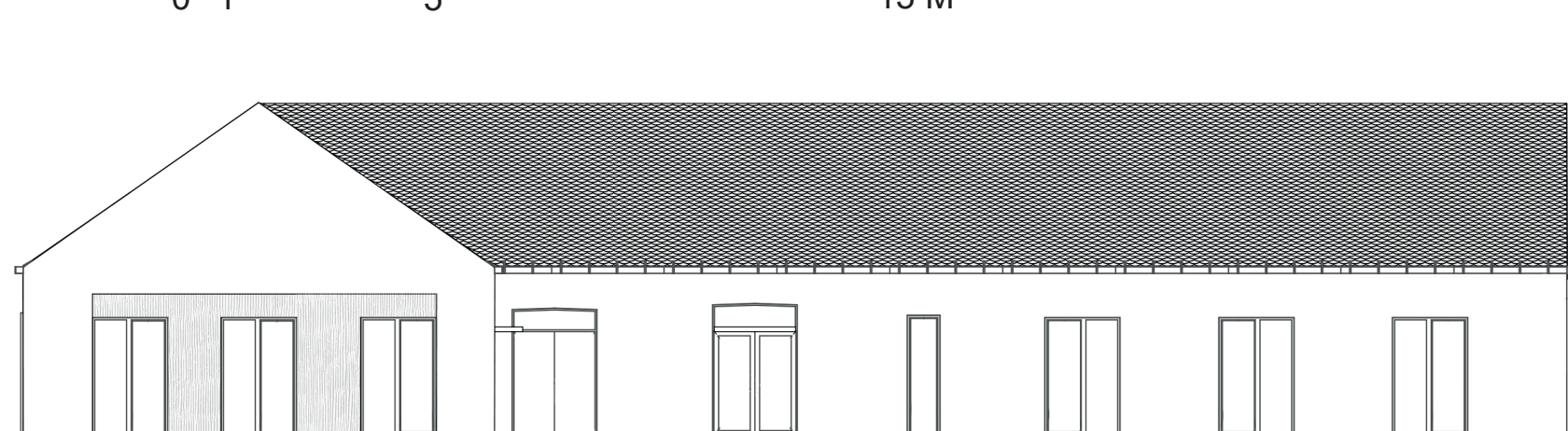
GRASS



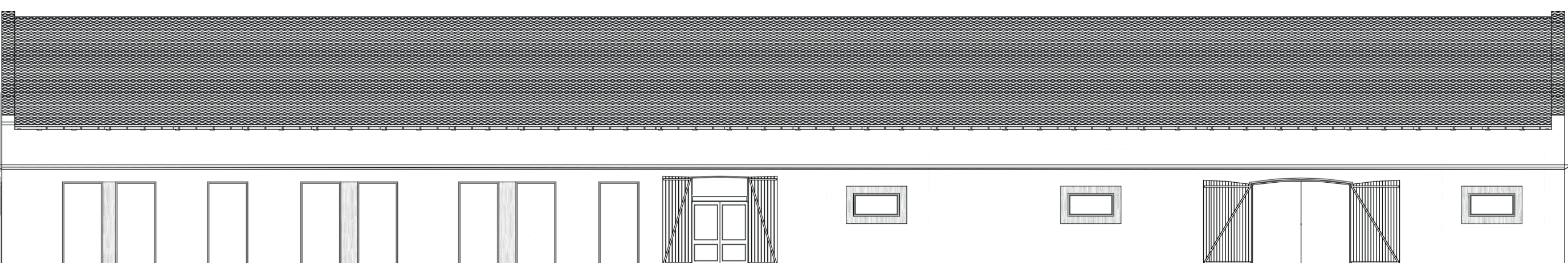
COBBLESTONE
PAVEMENT



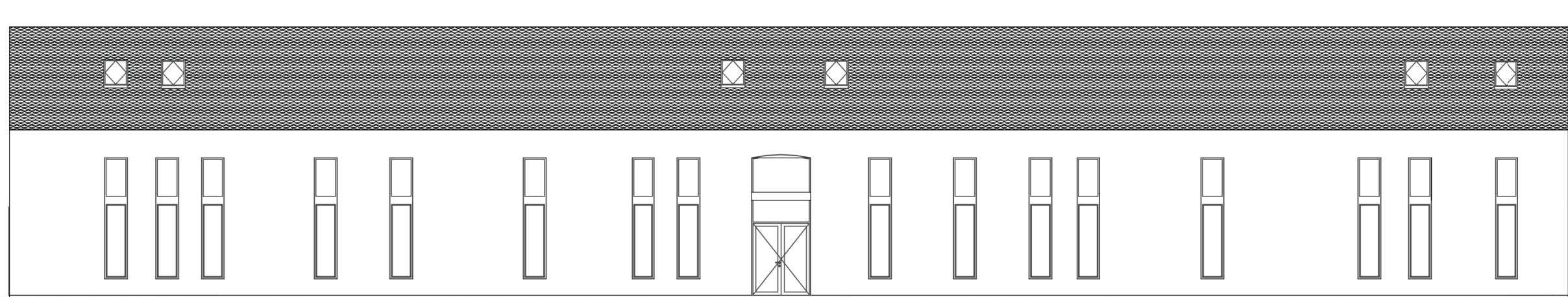
ACCOMODATION SECTION M 1:100



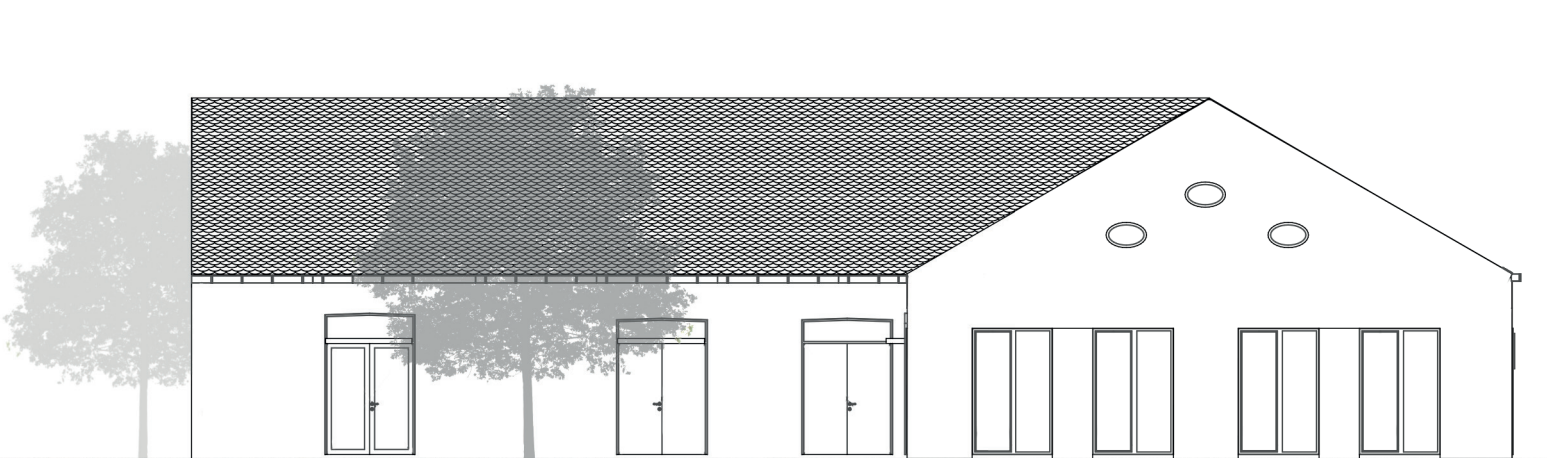
CANTEEN EAST VIEW



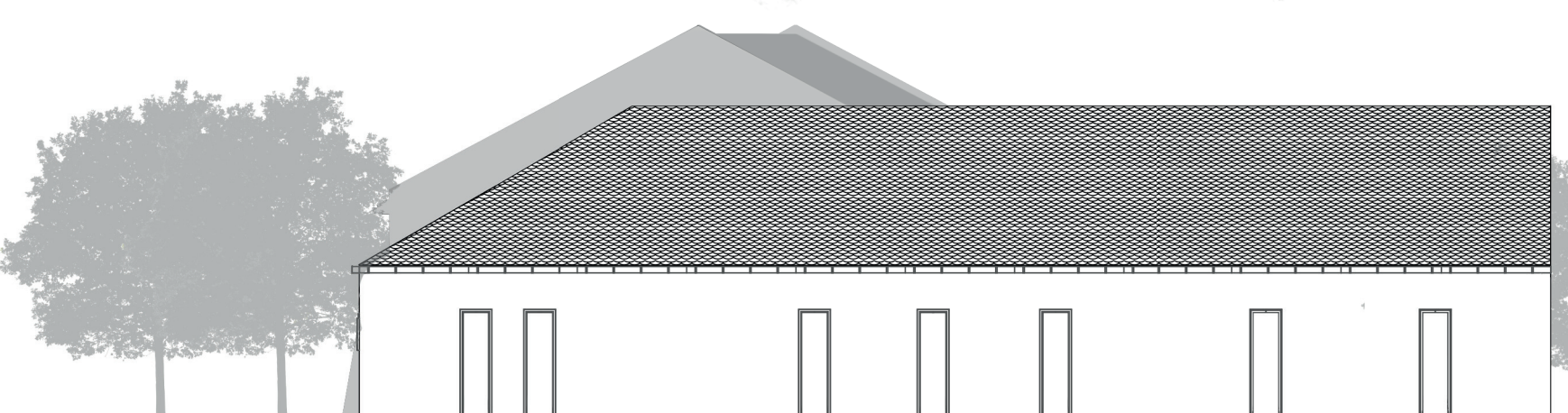
COMMUNITY CENTER EAST VIEW



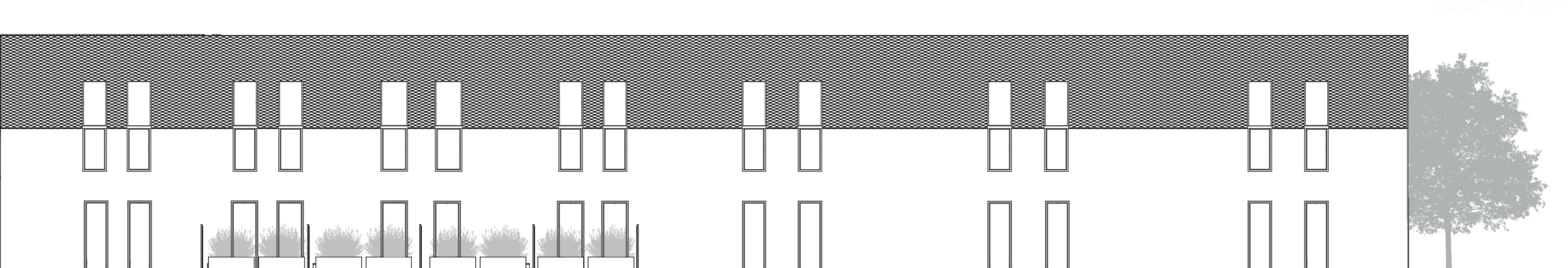
ACCOMODATION NORTH VIEW



CANTEEN NORTH VIEW



CANTEEN SOUTH VIEW



ACCOMODATION SOUTH VIEW

