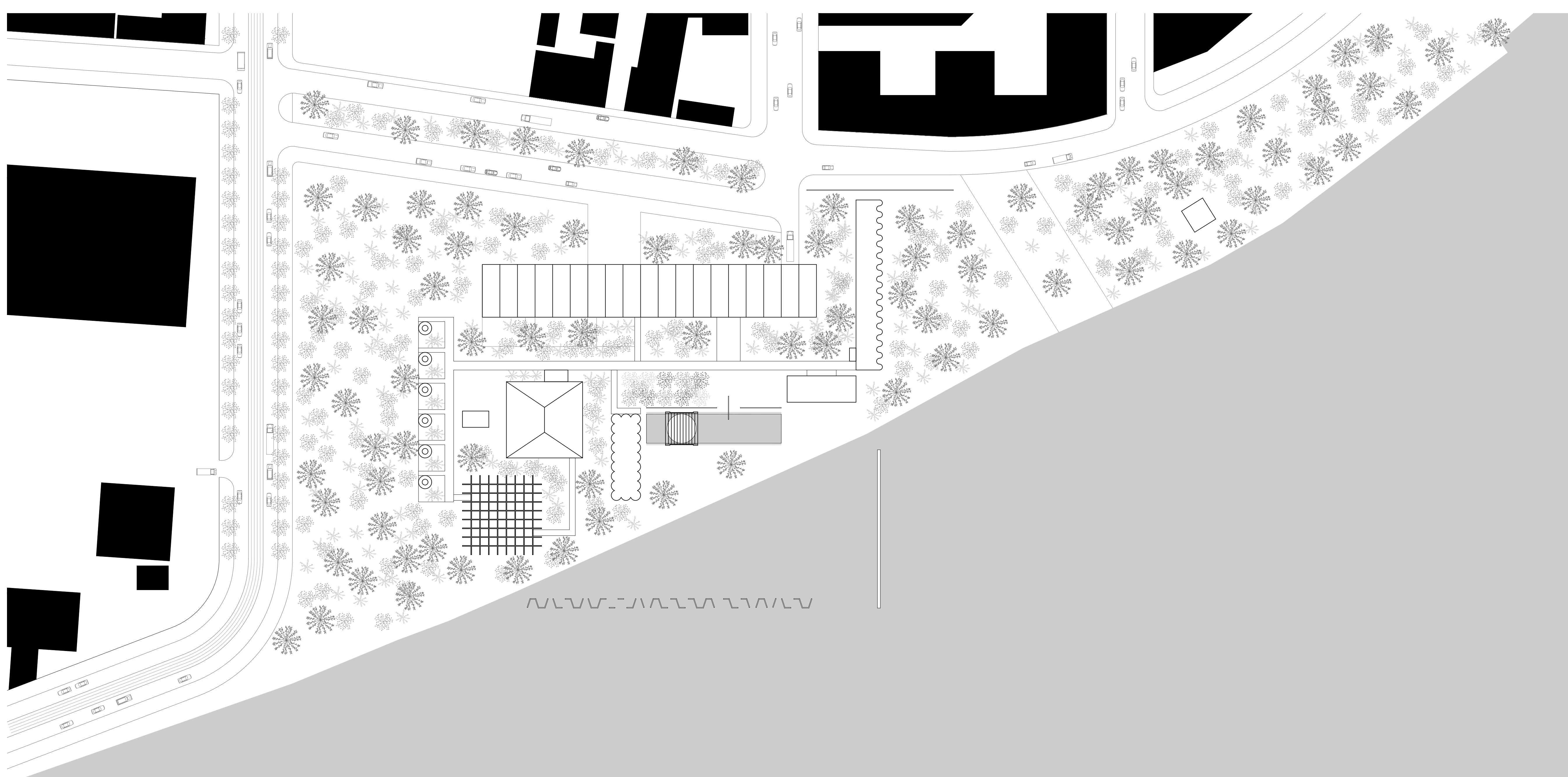




Site
1:750



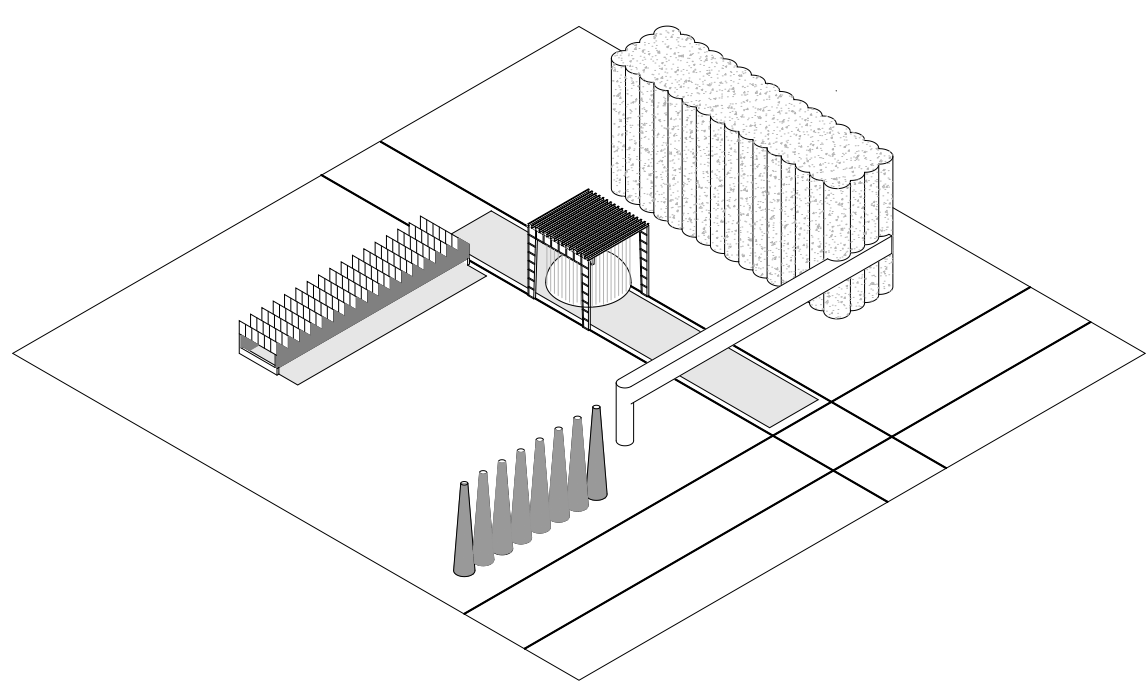
Factory

Spa Holešovice

Holešovice has been developed since 1850 and rapidly became industrialized during its hury years. In fact it became one of the major industrial districts alongside Karlin and Smichov. During those great years, we can easily find various sorts of factories and harbour facilities of which remains artefacts still standing even today.

This project is inspired by the various industrial shapes composed of basic geometric forms gathered together to achieve efficiency and functionality. The Factory uses these same strategies for gathering basic shapes together as a basis to achieve effectiveness inside a contemporary design. The result is a relaxation factory to free up souls at mass production rhythm. A series of enigmatic forms reborn from the ashes of industrialisation.

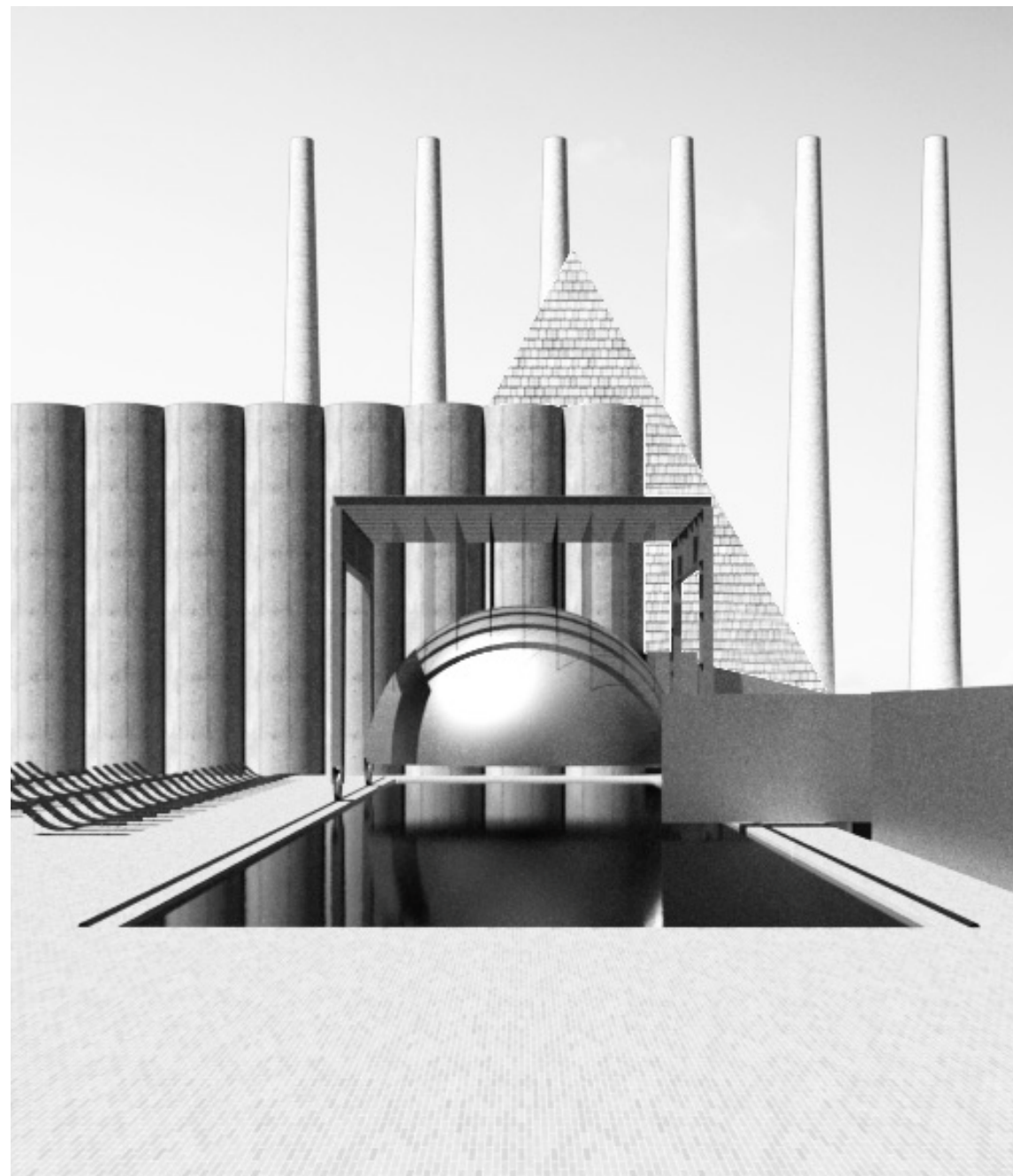
The spa hides behind a dense vegetation that only let the higher structures visible from the streets nearby. The vegetation brought inside the facilities as well via various garden spaces offered to the guests. The nature took over the installations to offer the visitors a new perspective upon a natural environment against human bold selfishness of the last century.



Graphic



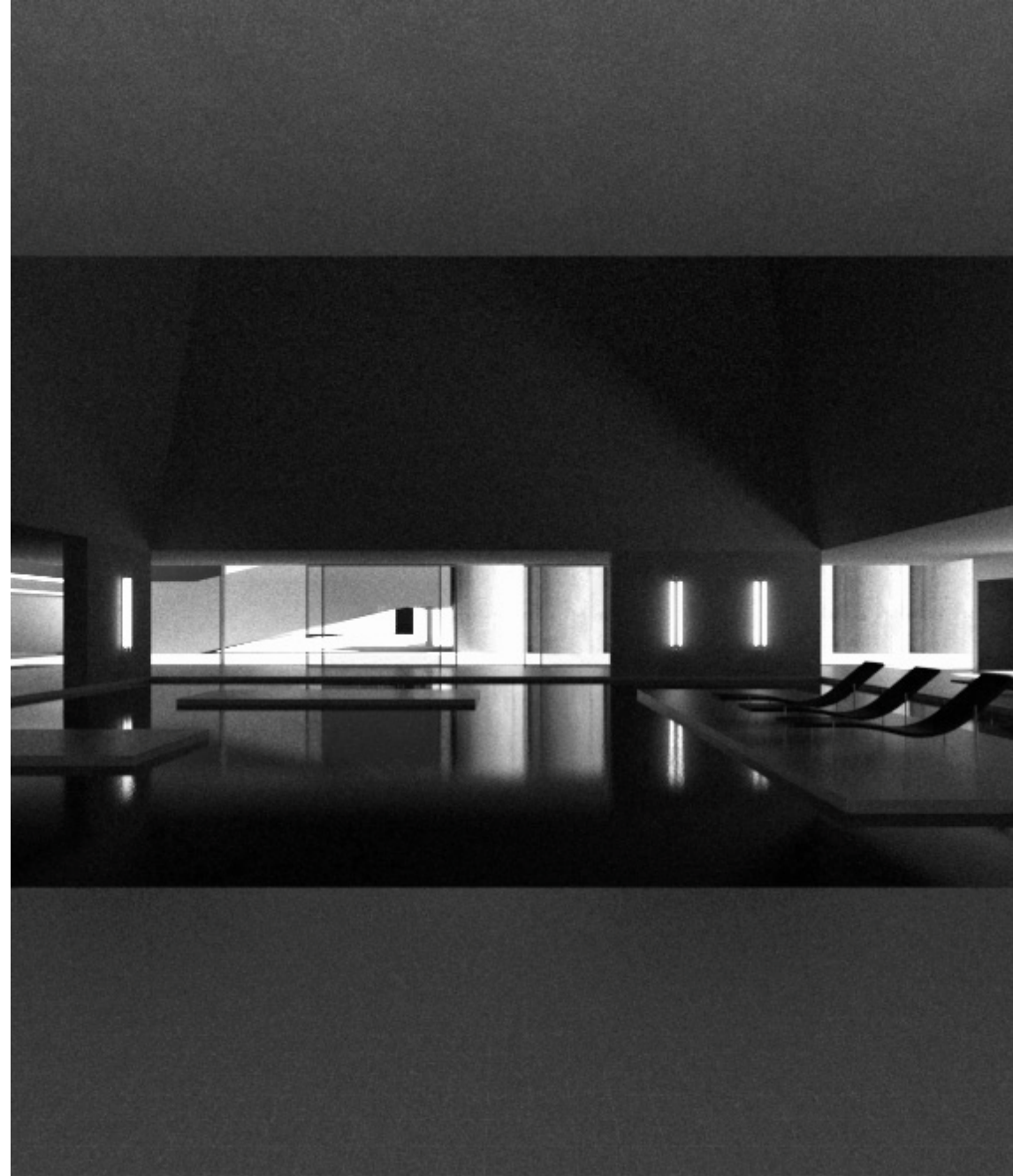
Reception



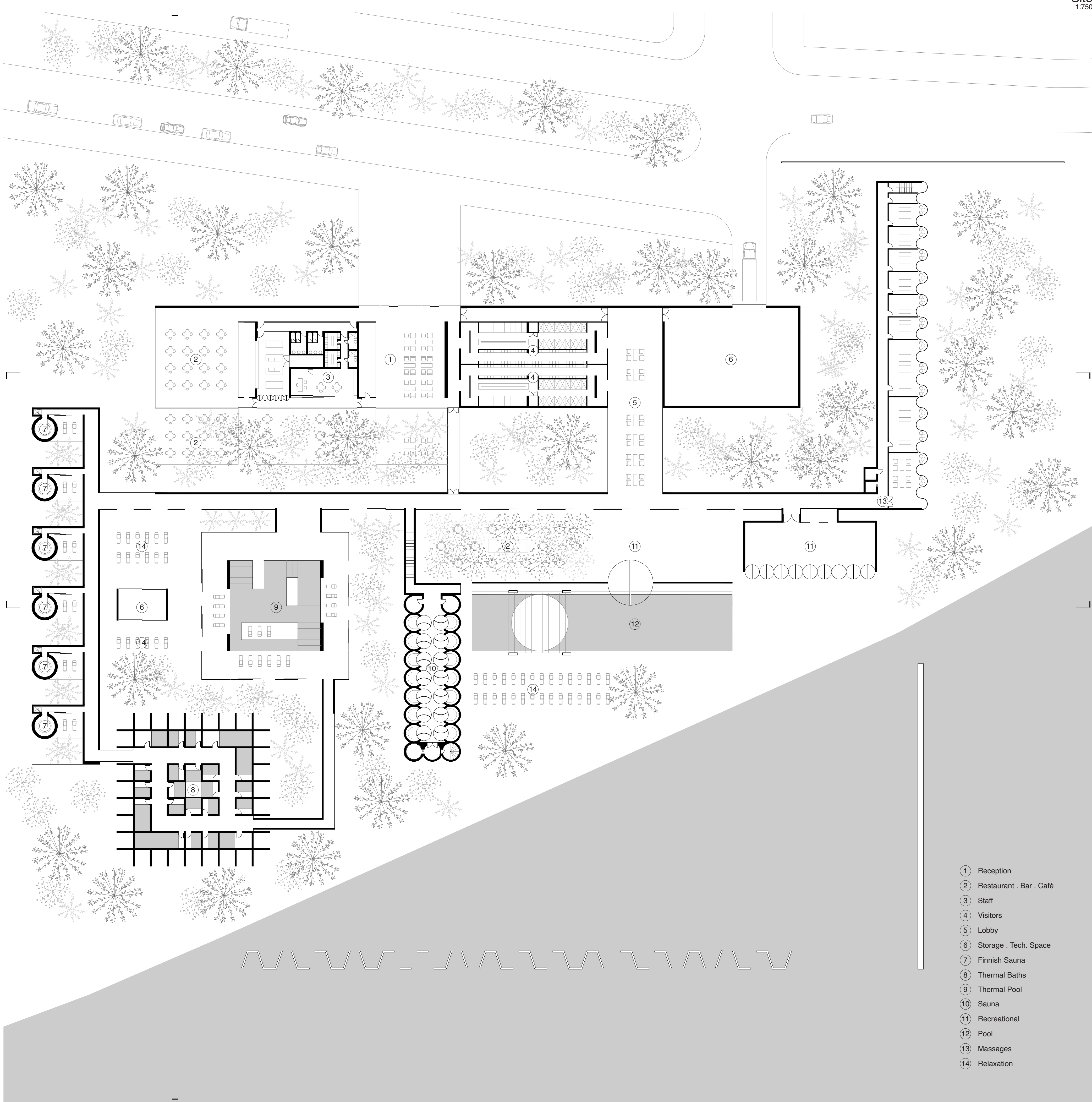
Pool



Garden

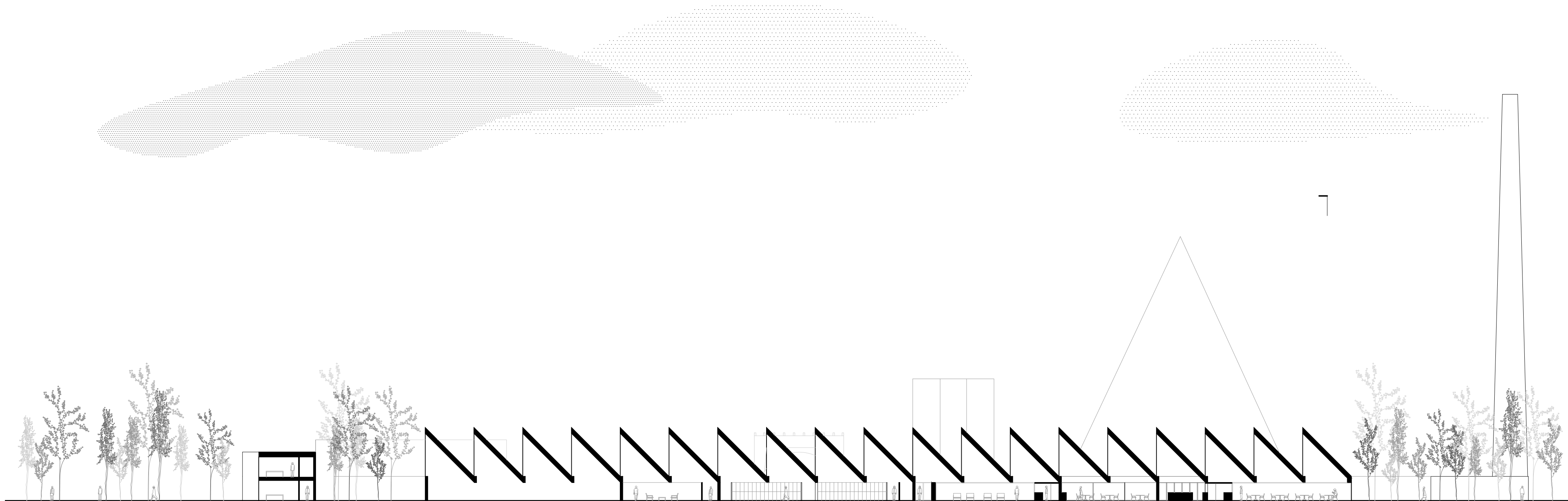


Thermal Pool

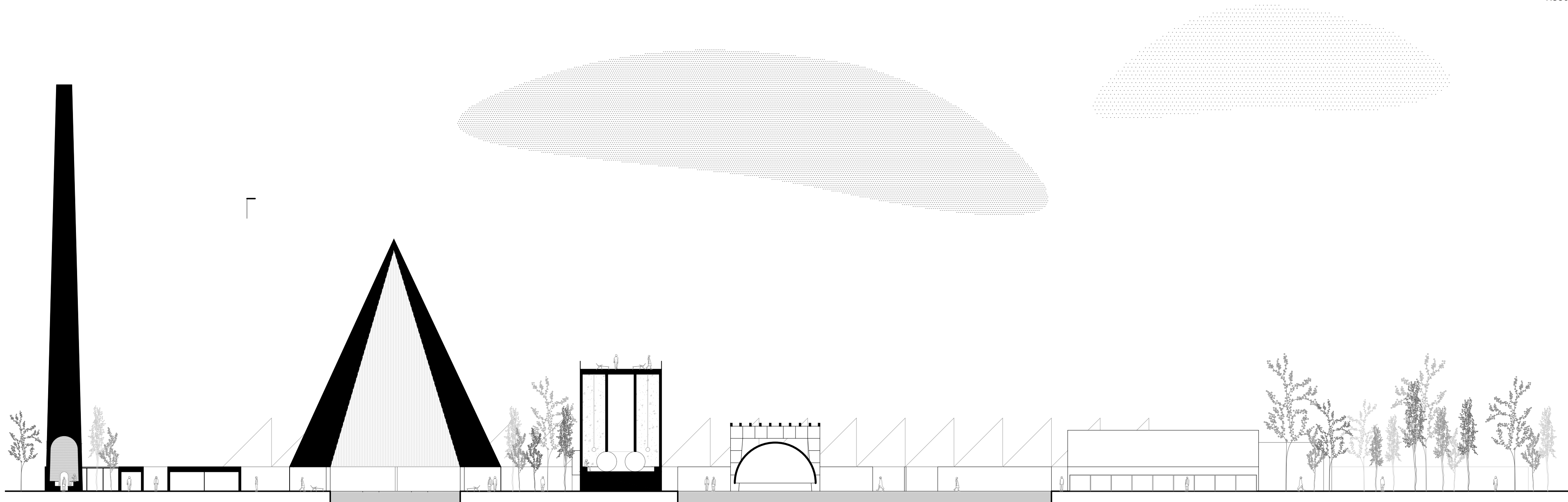


- ① Reception
- ② Restaurant . Bar . Café
- ③ Staff
- ④ Visitors
- ⑤ Lobby
- ⑥ Storage . Tech. Space
- ⑦ Finnish Sauna
- ⑧ Thermal Baths
- ⑨ Thermal Pool
- ⑩ Sauna
- ⑪ Recreational
- ⑫ Pool
- ⑬ Massages
- ⑭ Relaxation

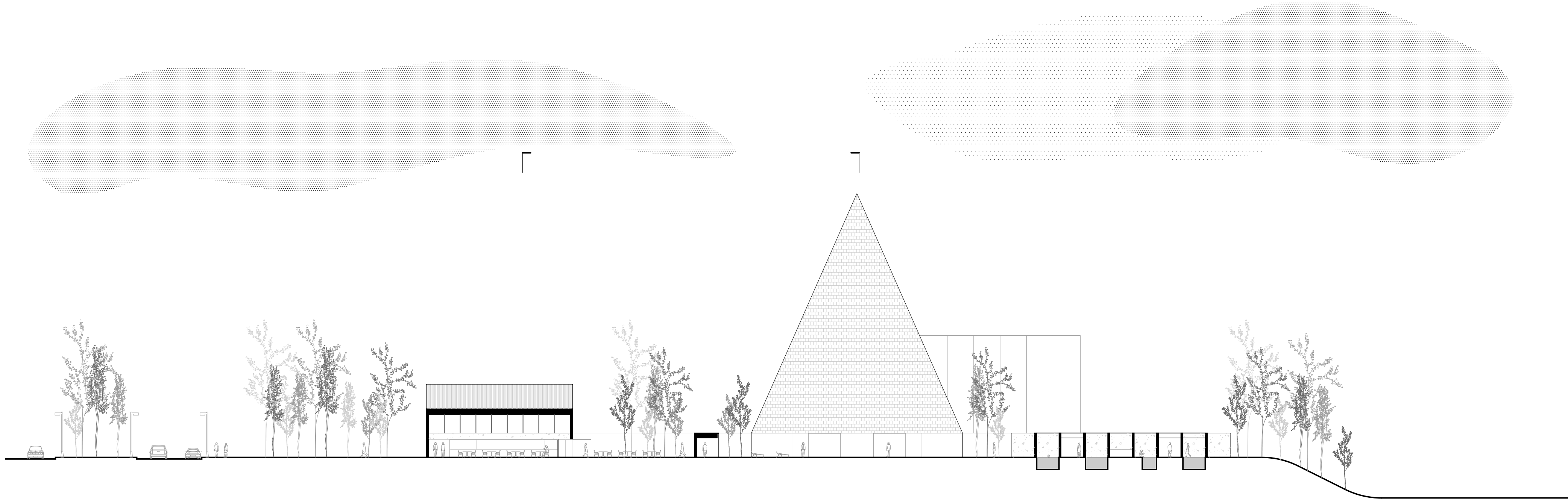
Plan
1:300



Section
1:300



Section
1:300



Section
1:300