



STUDIO EFLER
DEPARTMENT OF
ARCHITECTURE CONSERVATION
FA CTU, IN PRAGUE

REY OCÉANE, FRANCE
REGENERATION OF TRADITIONAL FARM HOUSE
PŘÍŠOVICE
SUMMER TERM 2020

CONTENTS PAGE

ANALYSE

Příšovice

Farmhouse

SITUATION PLAN

FARMHOUSE

Ground floor

First floor

Section & facade

BARN

Section

Grounfloor & facade

ANALYSE PŘÍŠOVICE



Příšovice is organised around the main road until Prepere then driving to Turnov. The landscape is constituted of roads in orange, private garden in green and heat around the village. We can observe too the presence of a lake and a river where some people are fishing but activities there are not developed so much.



Příšovice is a village close to a bigger one called Turnov. Most of activities are focused there making Příšovice a village with no many activities and without public space. What we can consider is the presence of schools (materska and zakladni) and the lack of infrastructure for children.

ANALYSE PŘÍŠOVICE





Příšovice is composed of different typologies of buildings, in blue there are independent houses or old farmhouse, in green more recent building most composed of flat, in pink some industrial buildings.

ANALYSE FARMHOUSE

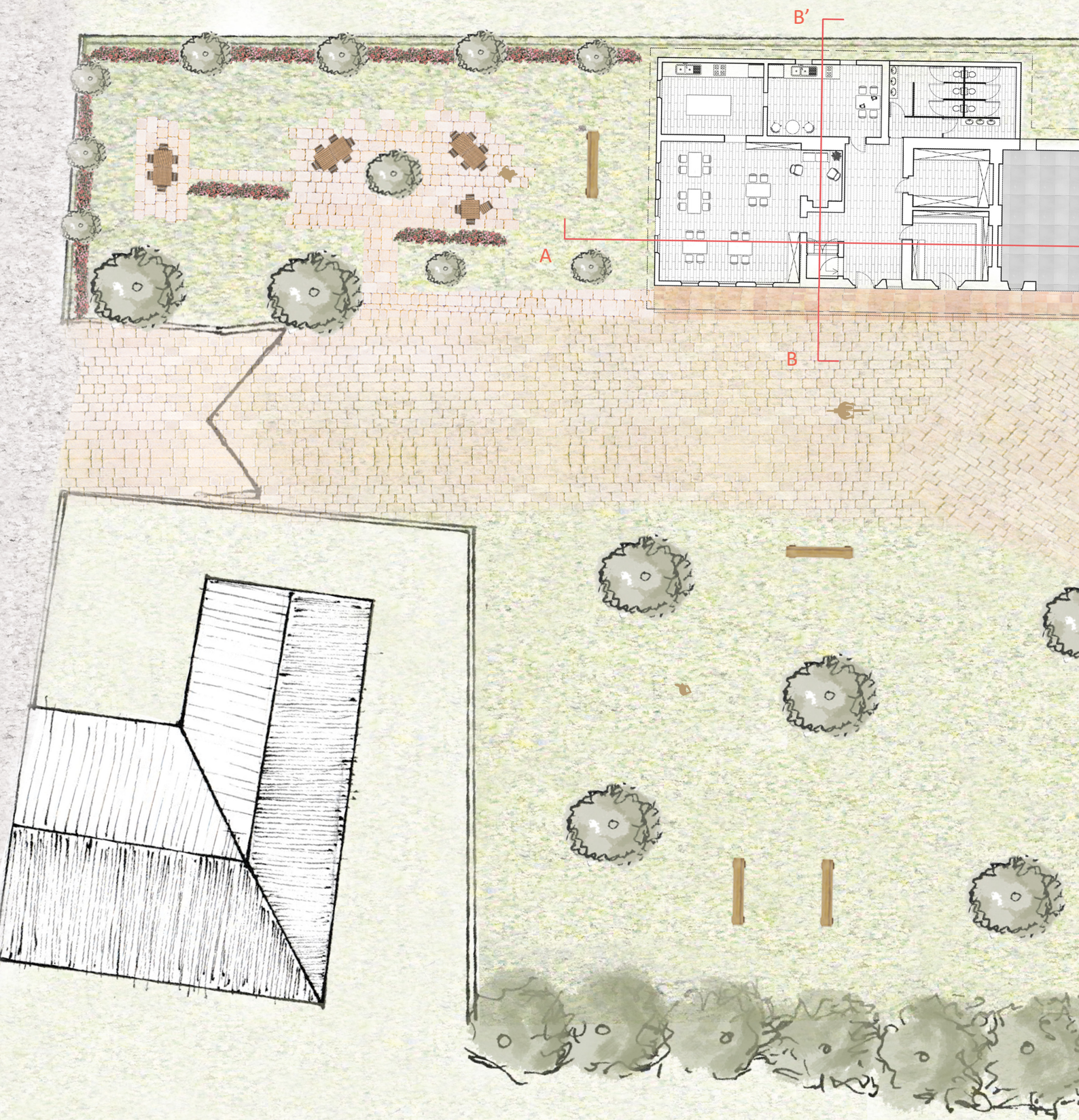


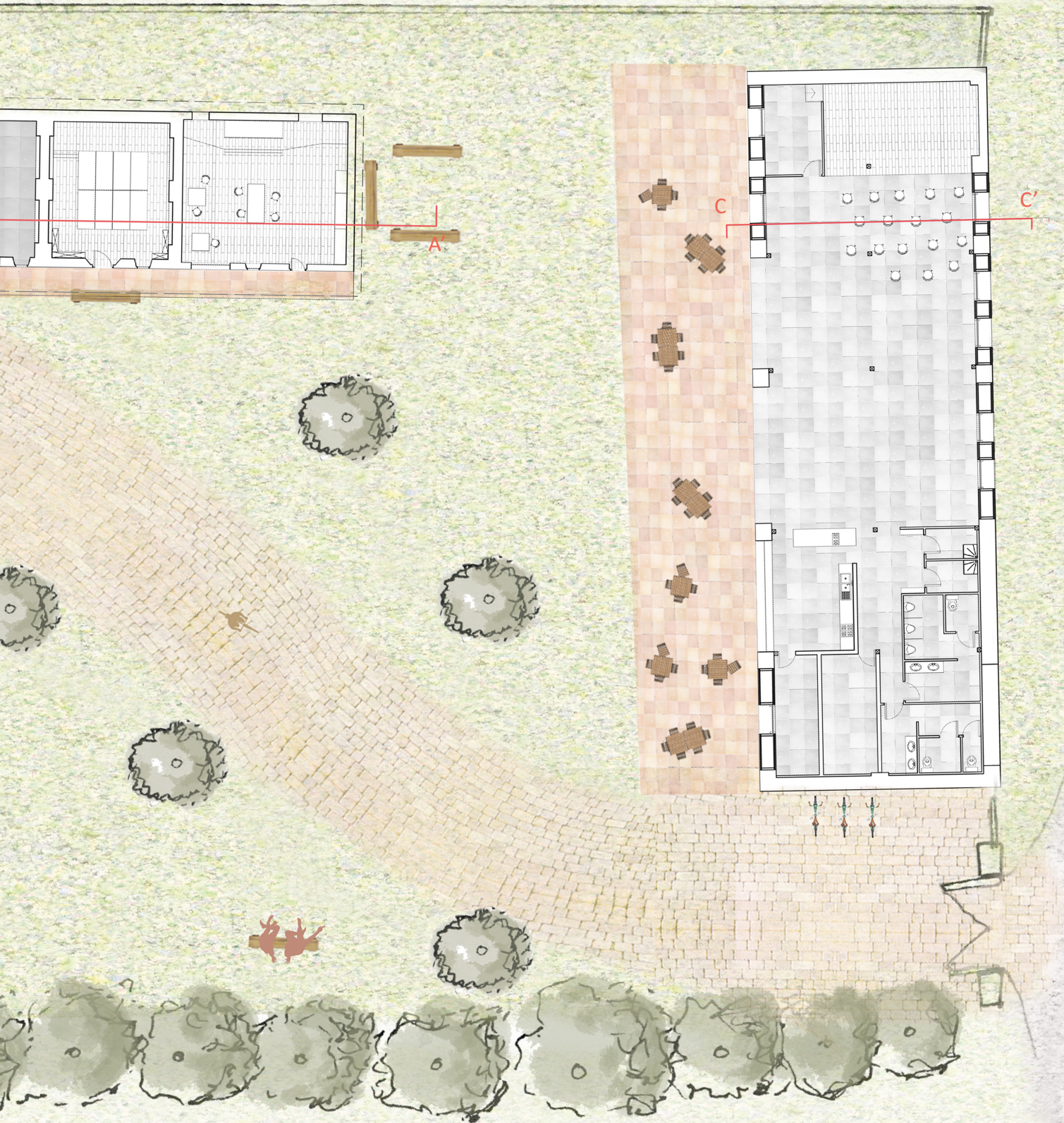
The plot is composed of a farmhouse with its different expansion follow the year, today only the older part is inhabited, the rest is a kind of big storage. The barn is a huge space unexploited. Moreover there is another building from last century without big patrimony interest I decided to demolished.



The project is to create a children house with many outside and inside activities. Barn would be for parents or for other events usefull for the life of the village. Concept was to use the less energy possible to renovate these spaces and conserv this patrimony. Spaces are made to be very free and let the possibility to welcome other use in the futur.

SITUATION PLAN





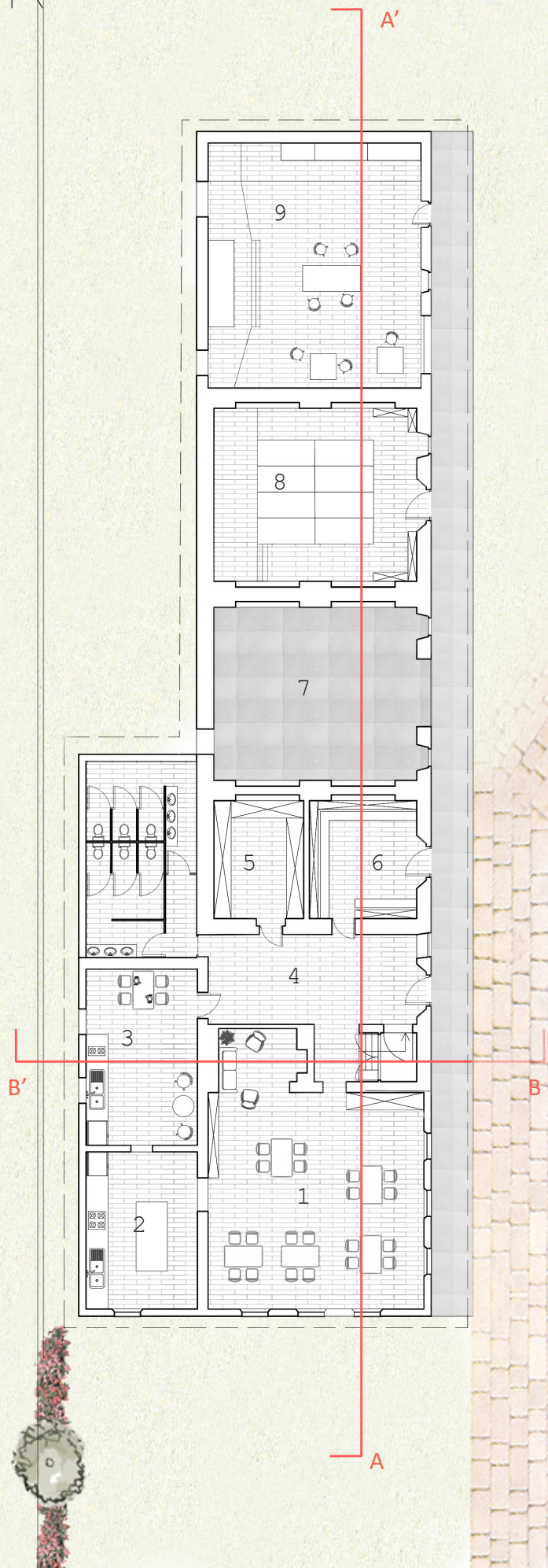
FARMHOUSE GROUND FLOOR

0 1 5 10



Room description :

1. Living room
2. Kitchen for children
3. Staff room
4. Main entrance
5. Storage
6. Storage for children
7. Storage for outside stuff
8. Yoga room
9. Library

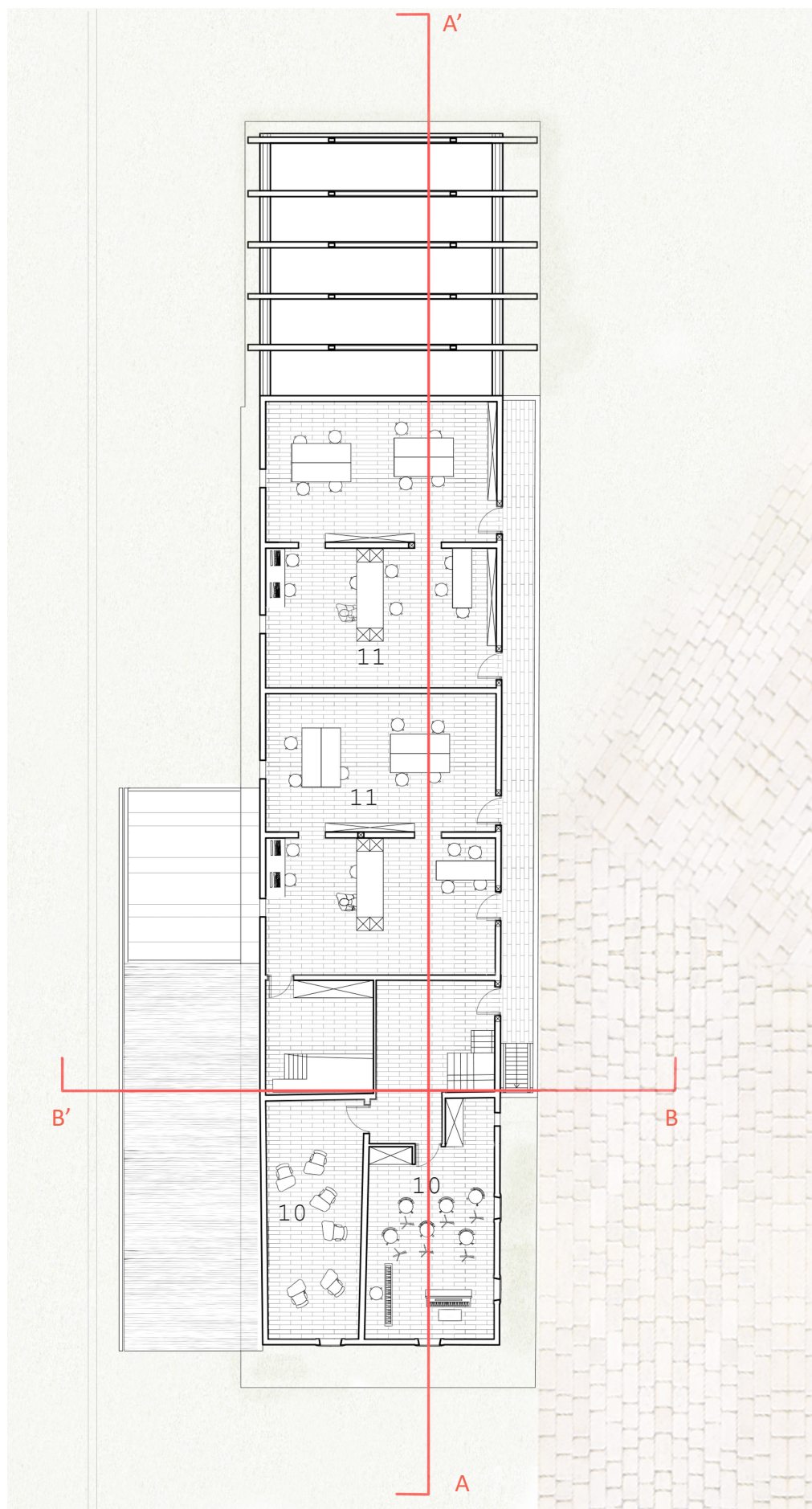


FARMHOUSE FIRST FLOOR

0 1 5 10

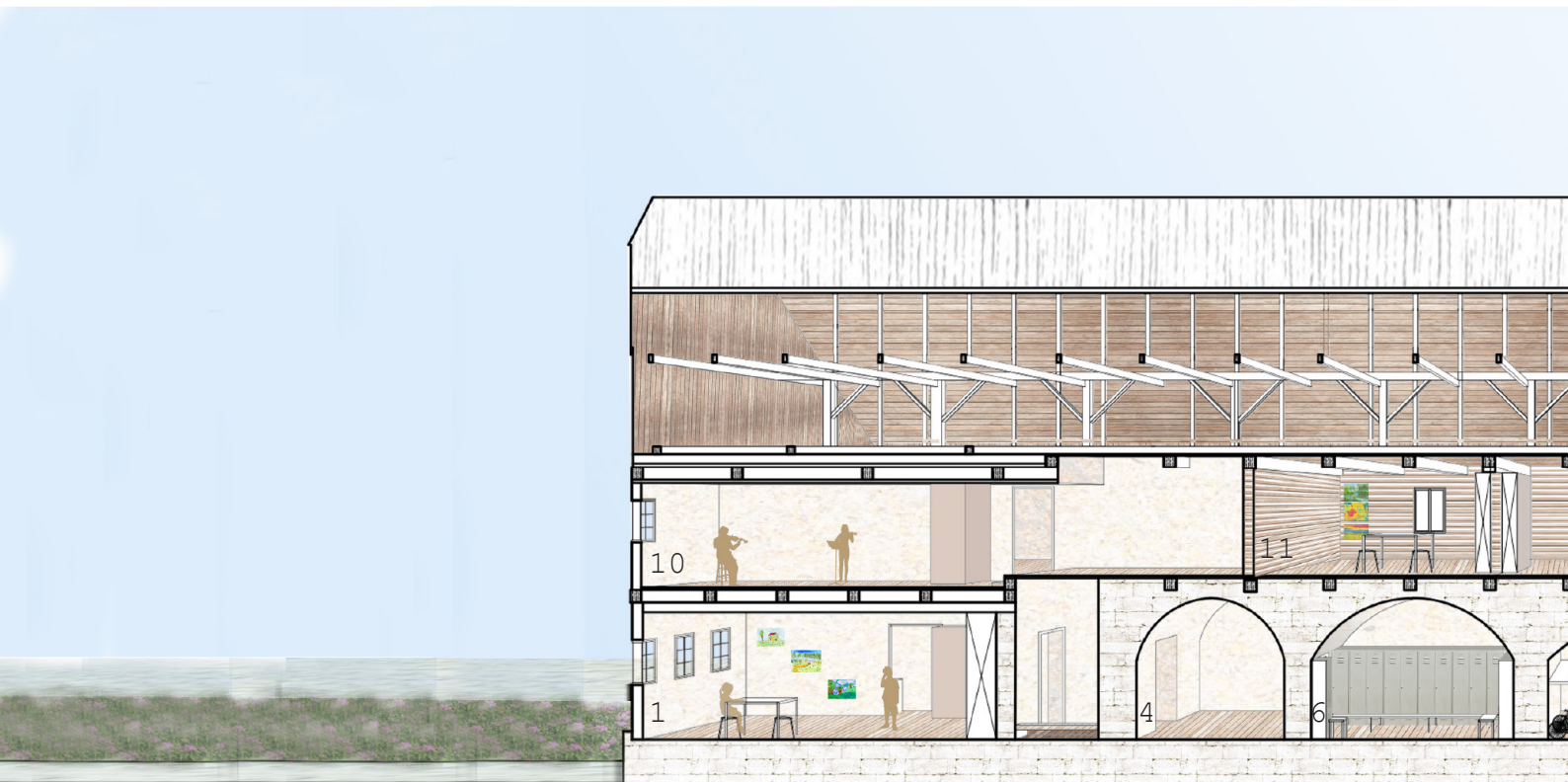


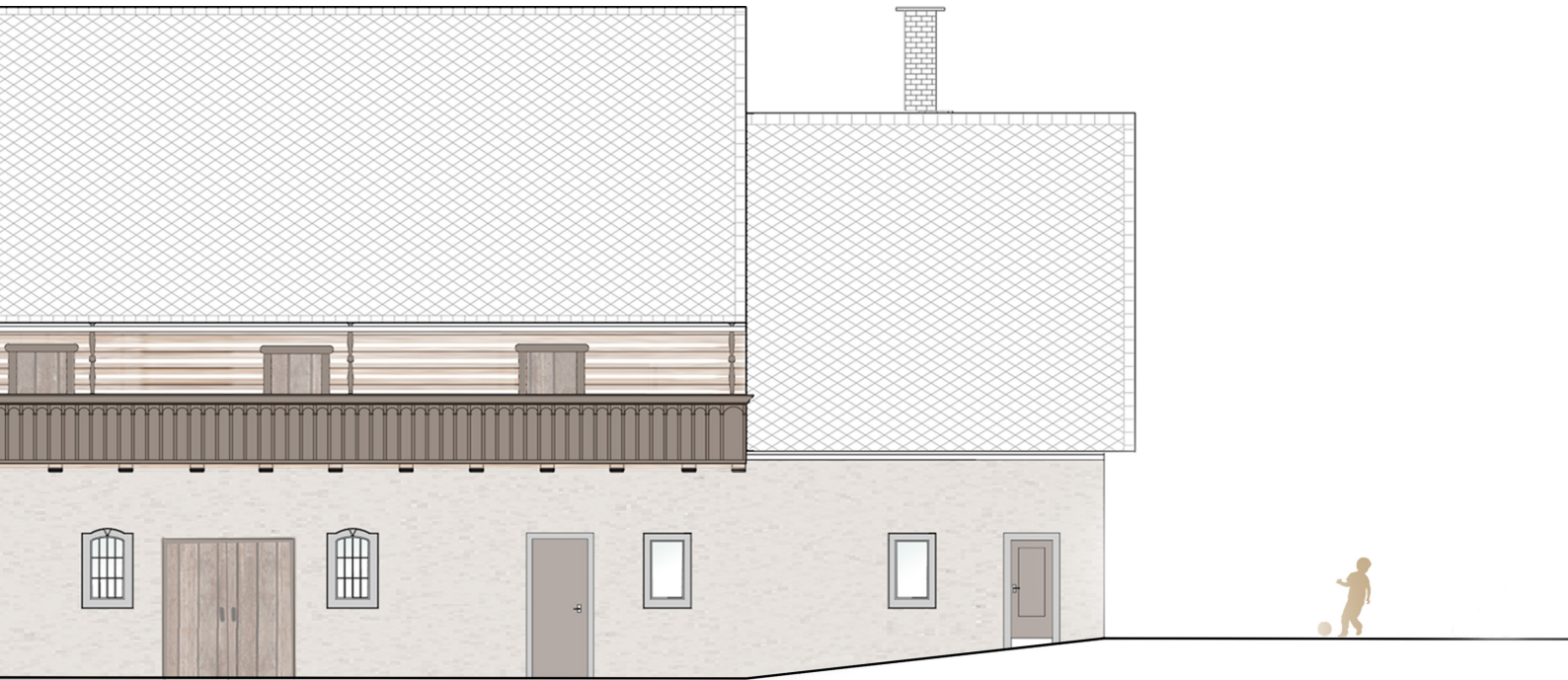
10. Music space
11. Studio



FARMHOUSE

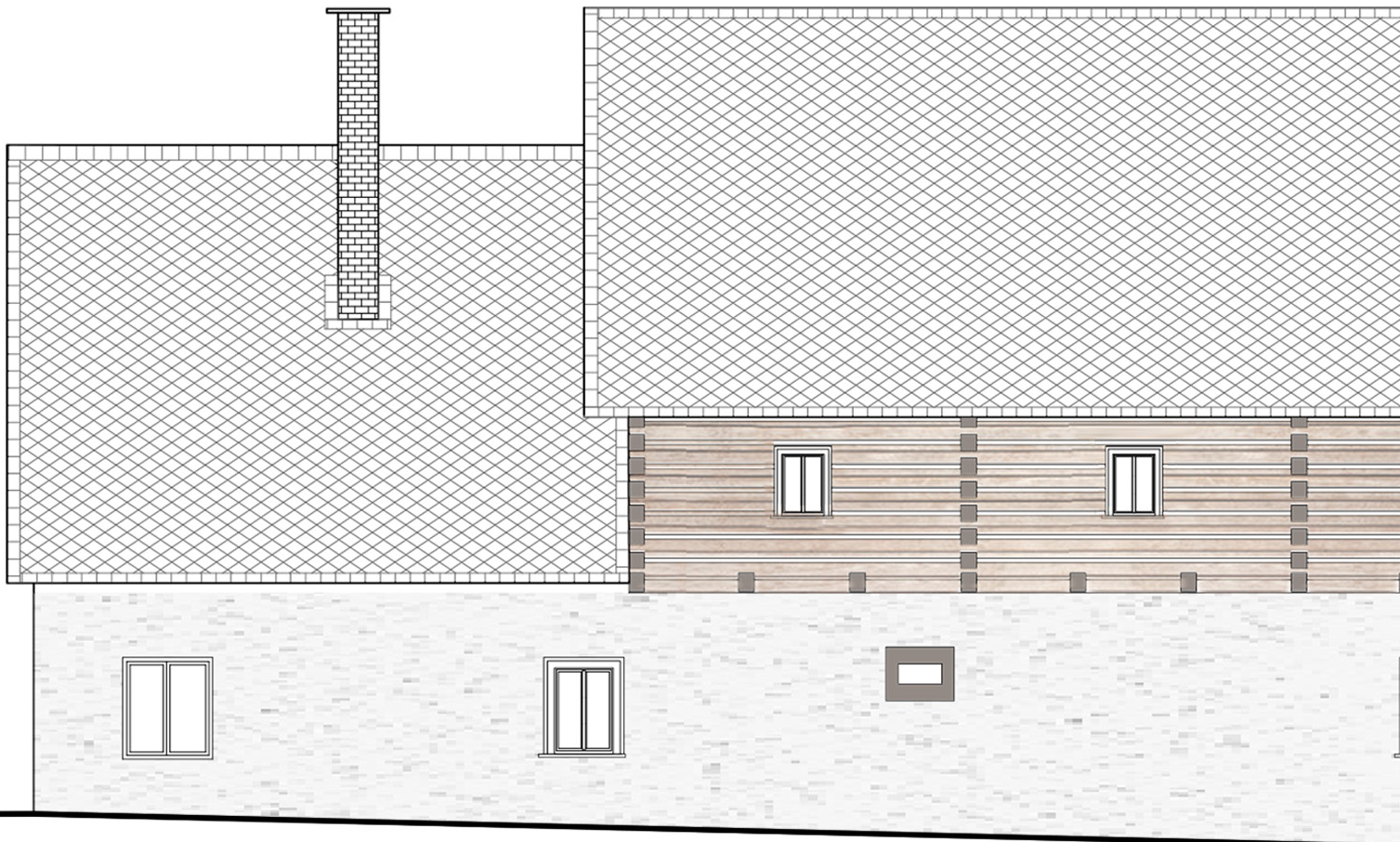
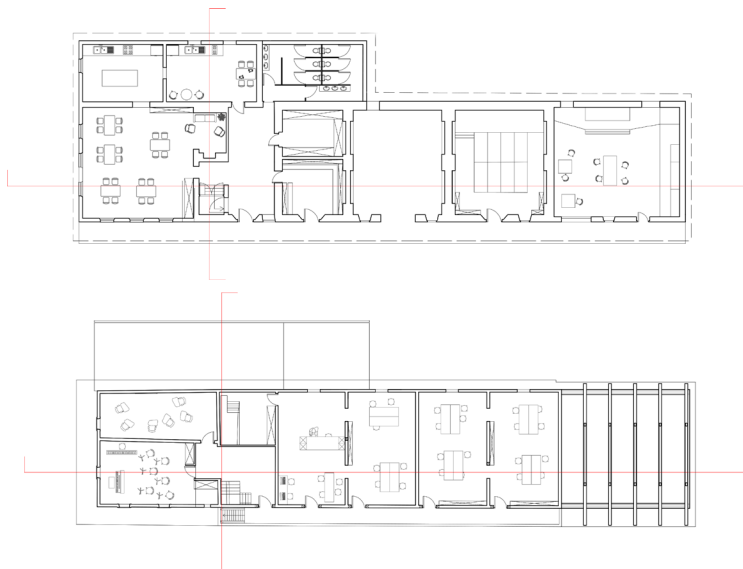
SECTION AA' & EAST FACADE

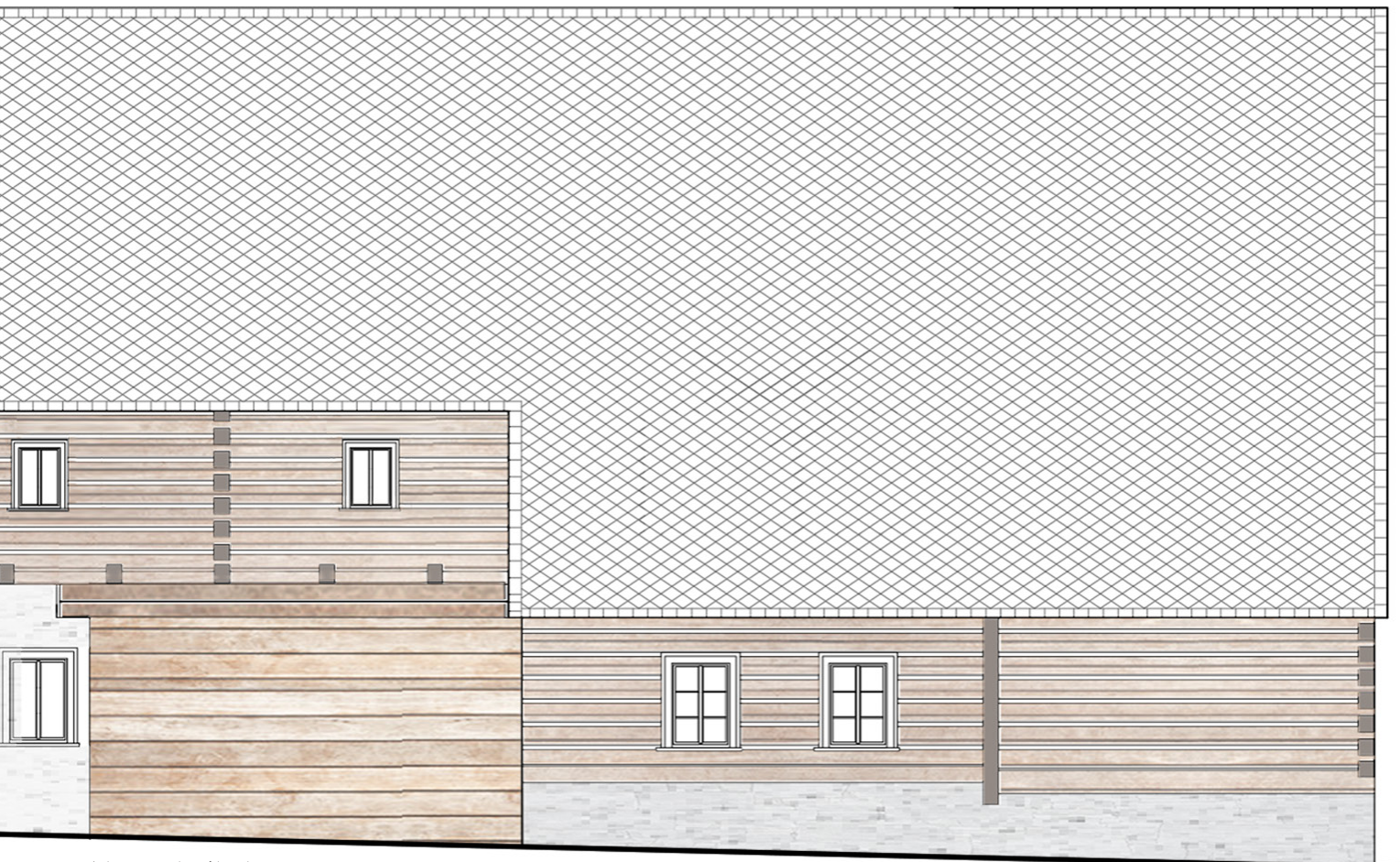
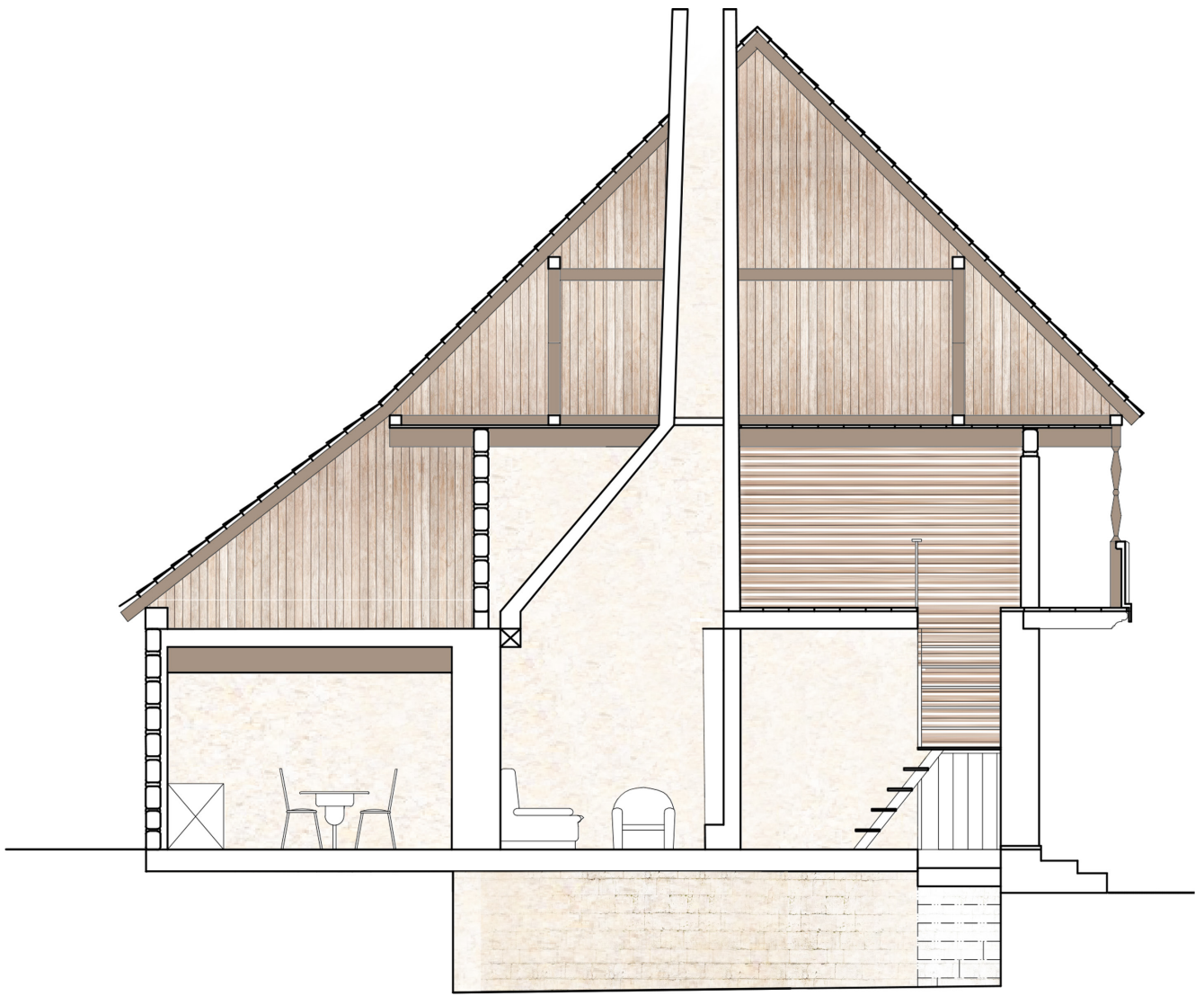




FARMHOUSE

SECTION BB' & WEST FACADE

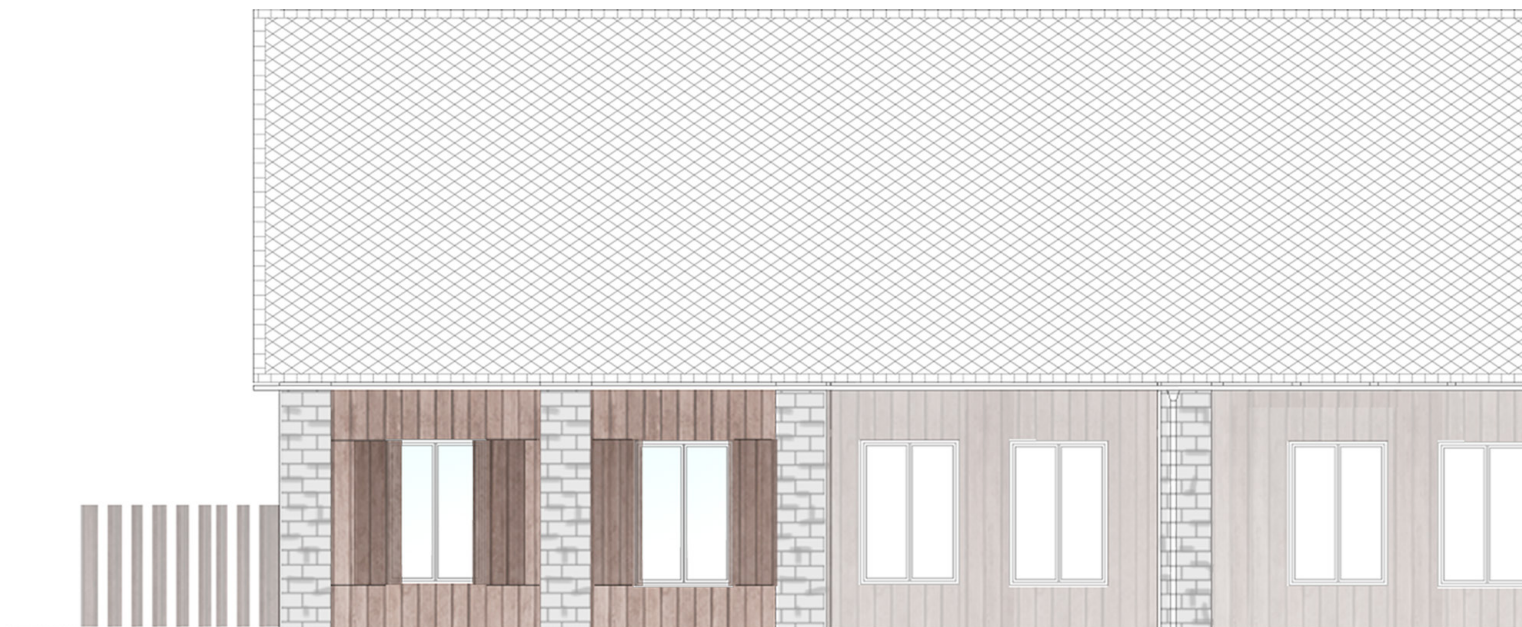
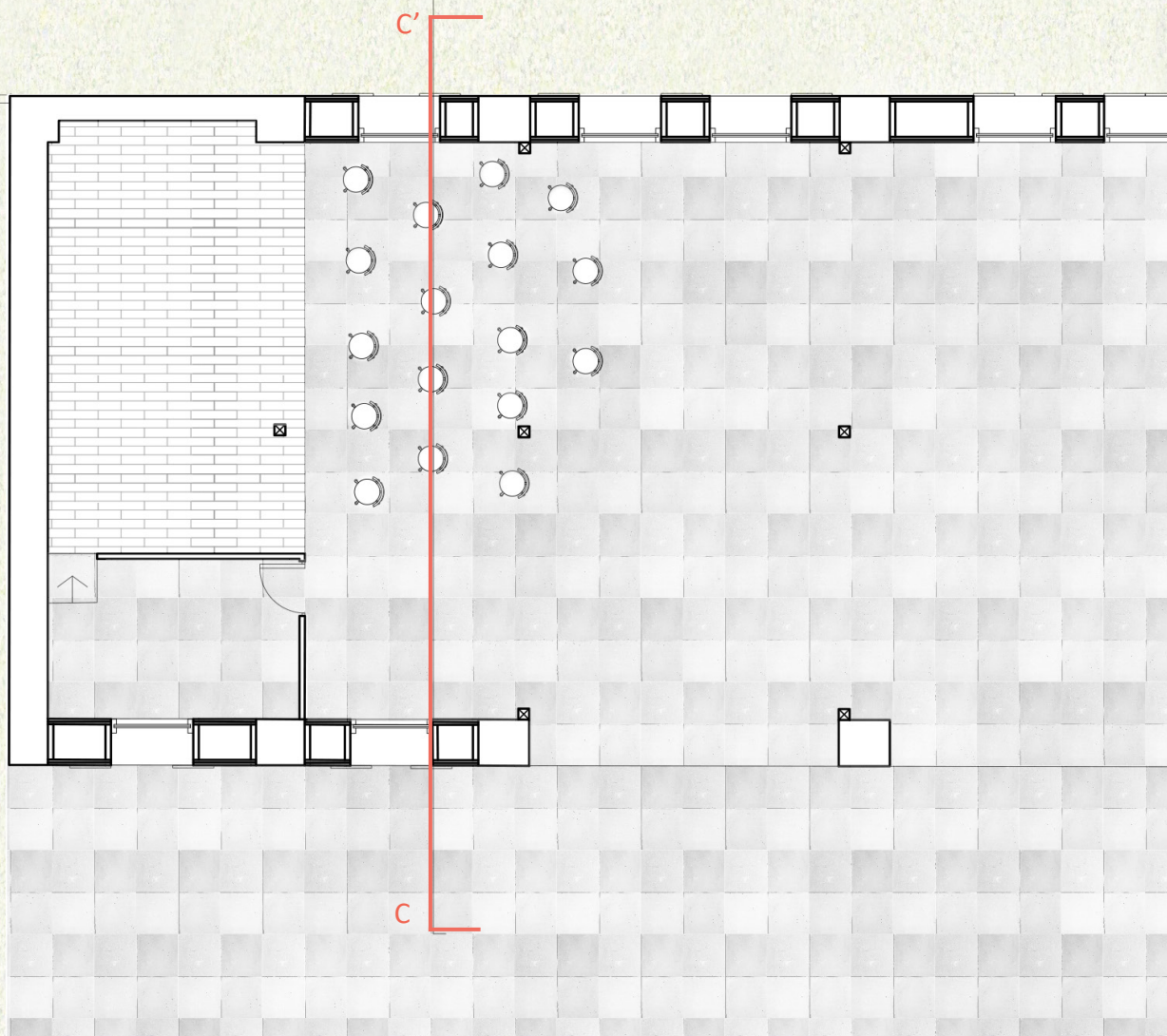


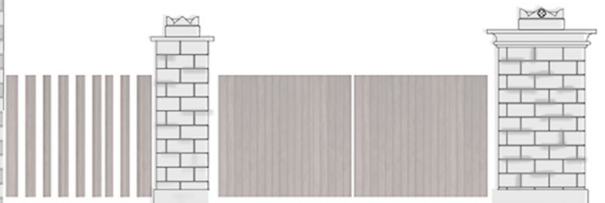
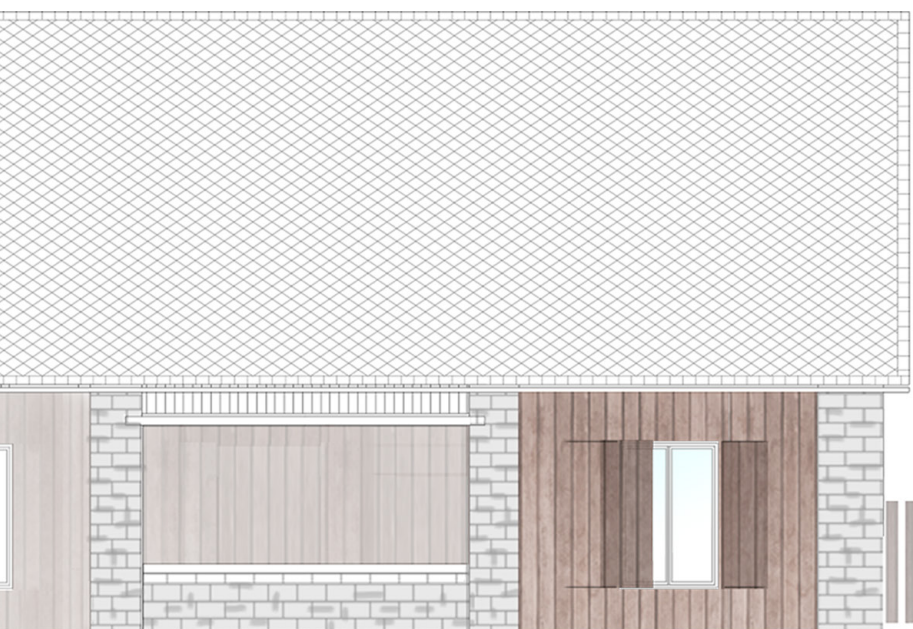
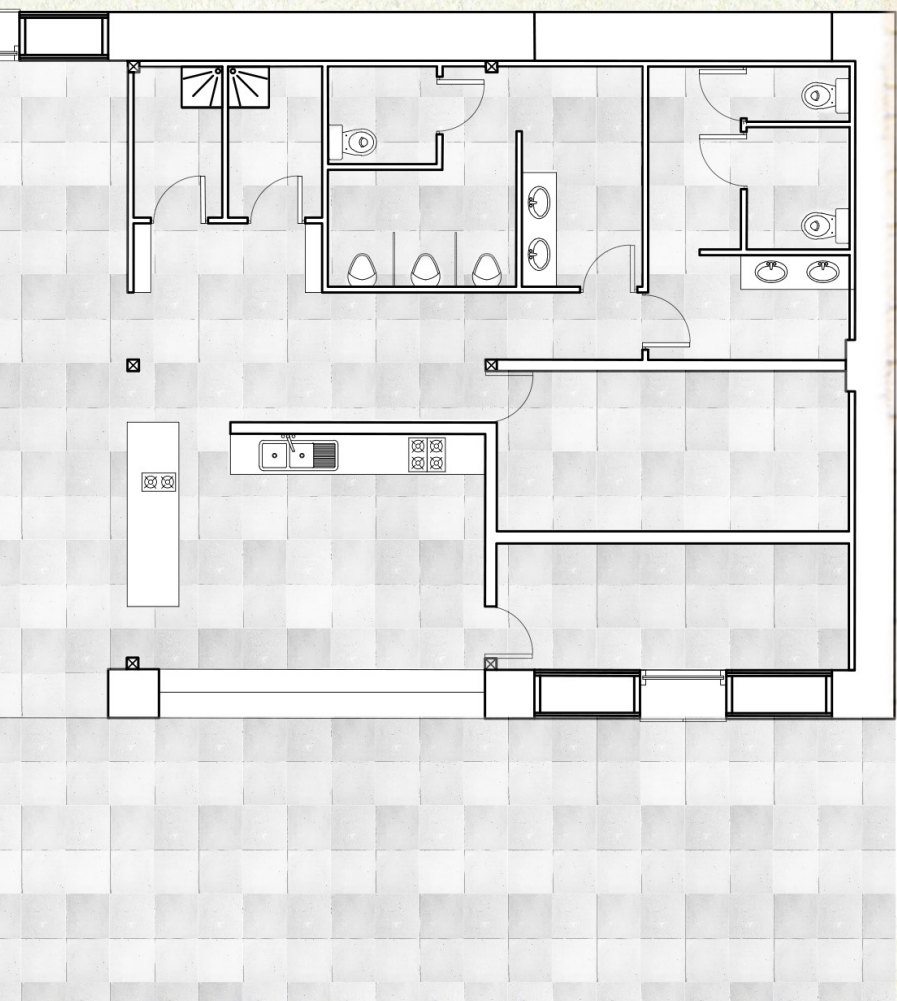


New toilets

BARN

EAST FACADE & GROUND FLOOR





BARN SECTION CC'

