



DESIGN STUDIO EFLER
EFLER - TOMSA - STOČES
DEPARTMENT OF
ARCHITECTURAL CONSERVATION
FA CTU, IN PRAGUE

VOJTĚCH SUCHAN
BYTOVÝ DŮM V PIVOVARU
REGENERATION OF BREWERY AREA
ZAHŘÁDKY
WINTER TERM 2020

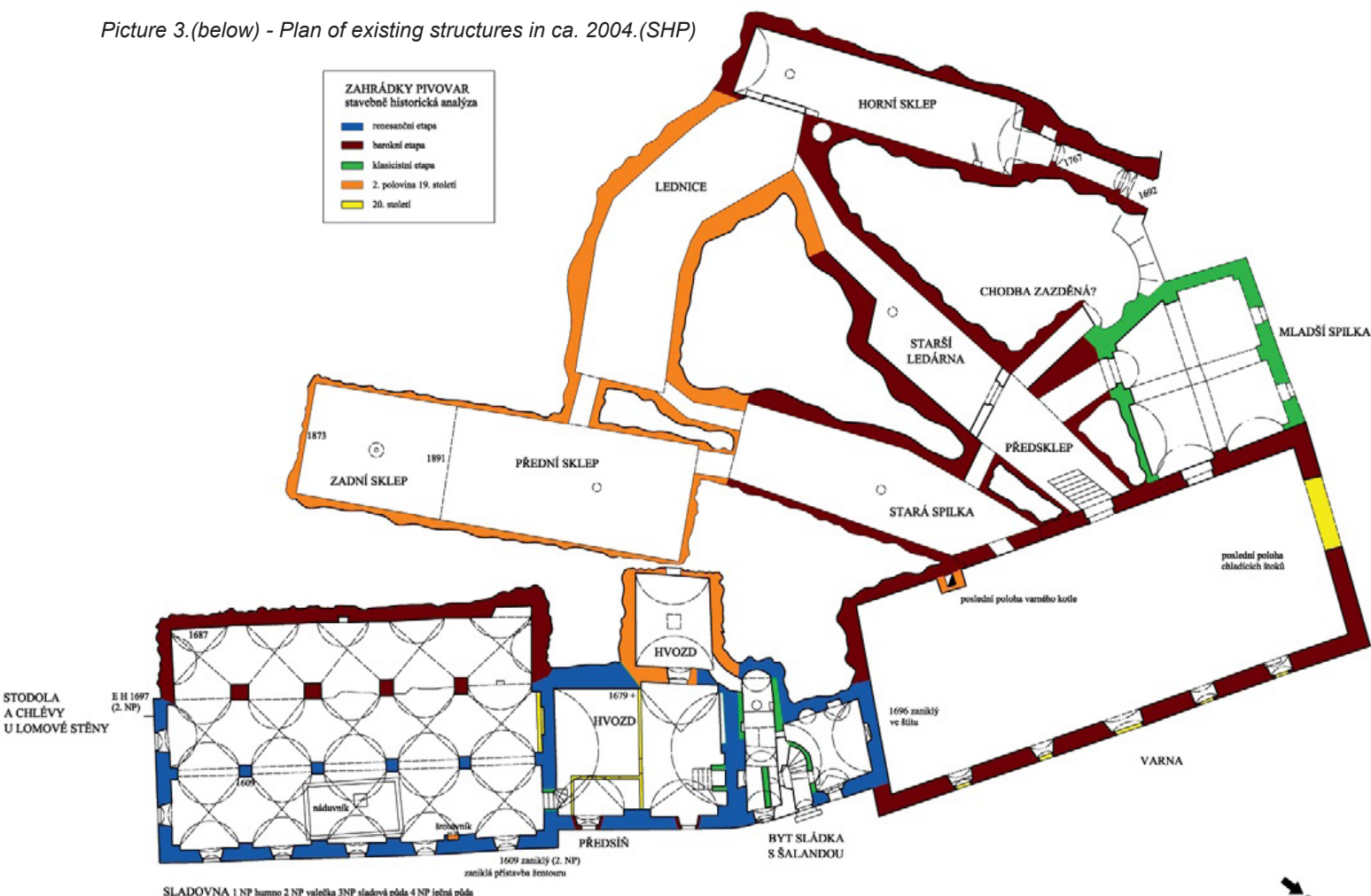


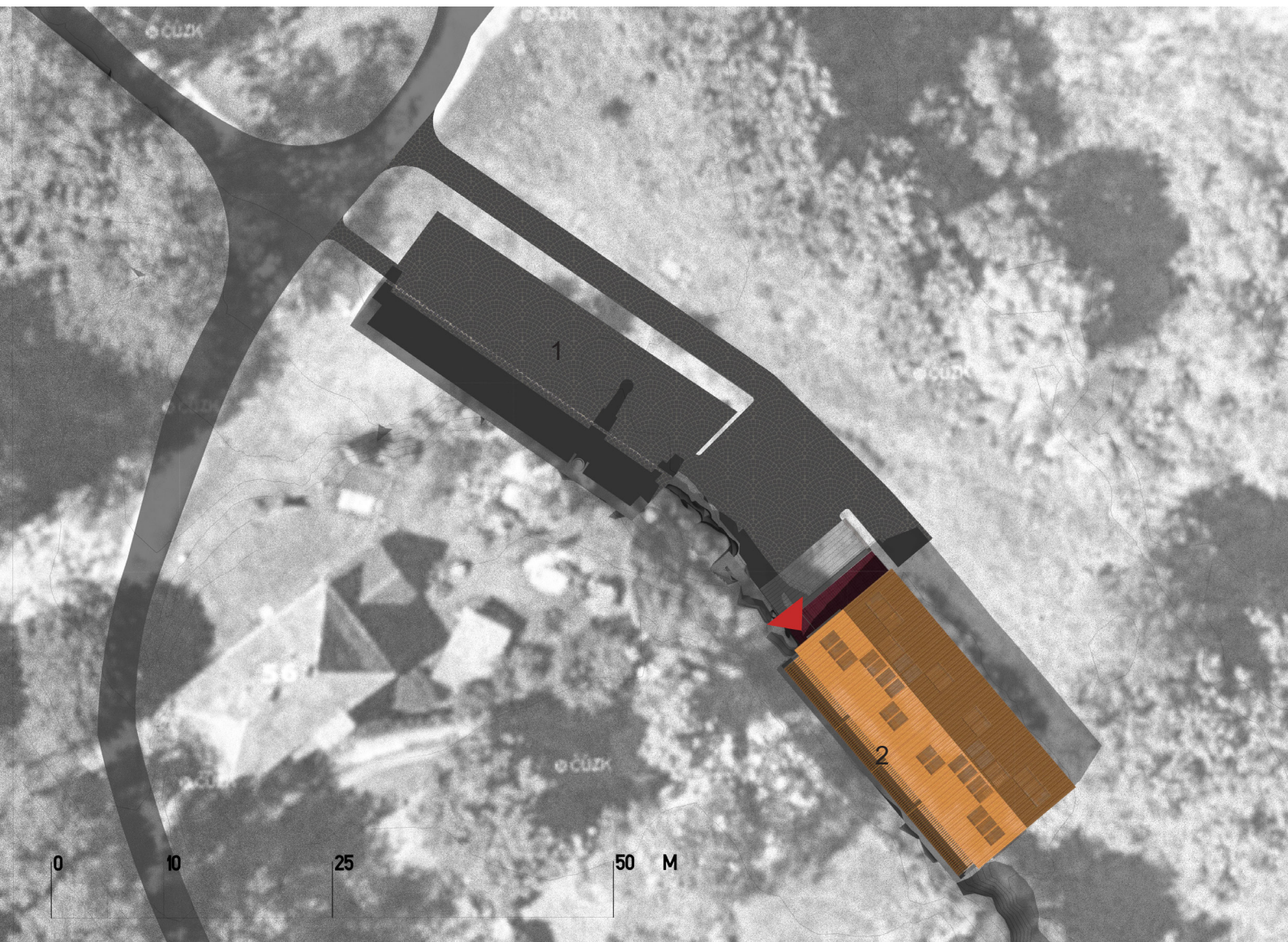
The brewery in Zahrádky was built sometime before 1622 (Physically dated to 1609 in the basement of the malt house). Despite modernization attempts through the 19th century the role of the brewery has lessened and it finally closed in 1927. Through the 20th century the buildings have slowly deteriorated until the collapse of the roof in the 90's, after which the over ground structures were torn down in 2004, leaving the back wall of the brew house with it's large smoke stack, and the vaulted basement of the malt house, which are both preserved in relatively good condition. The brewery, built under a cliff face has had large basement areas bored out into the rock, most of which are still acessible and well preserved to this day. My goal was to save the basement in it's current condition and transform it into public space under a modern building, keeping the shape and mass of what once was.

Picture 1. (up) - The brewery in ca. 2004.

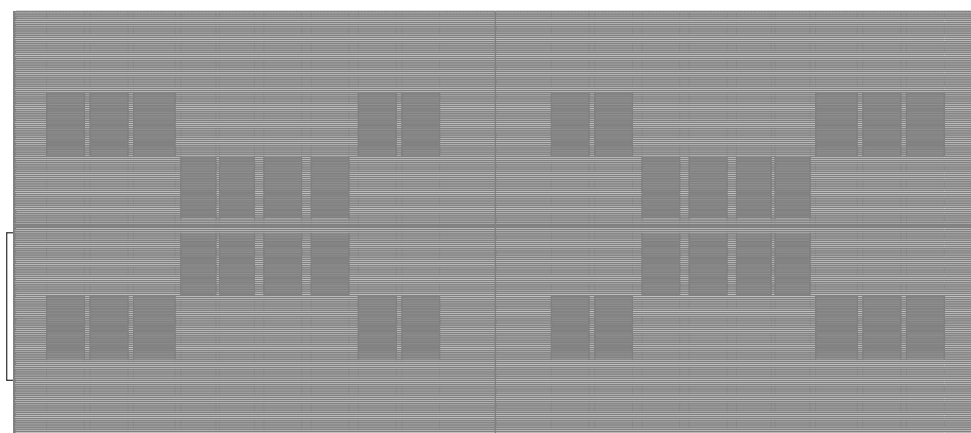
Picture 2.(bottom) - State of the brew house in 2020.

Picture 3.(below) - Plan of existing structures in ca. 2004.(SHP)





A Site plan of the Brewery area. 1. - paved square in the shape of the brew house useable for organizing markets, concerts, etc. 2. - terraces for each flat in the water ditch behind the malt house.

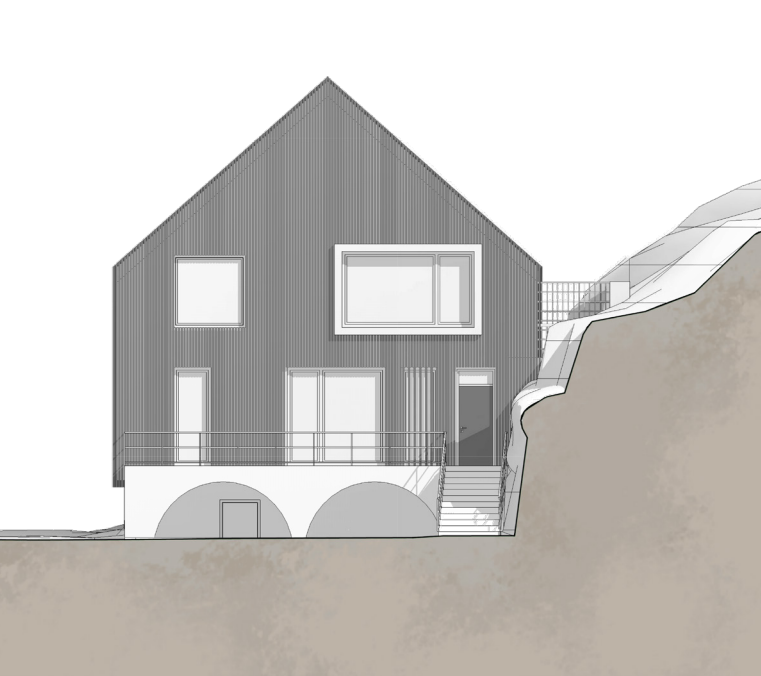


Roof plan showing the layout of openings allowing light into the apartments.

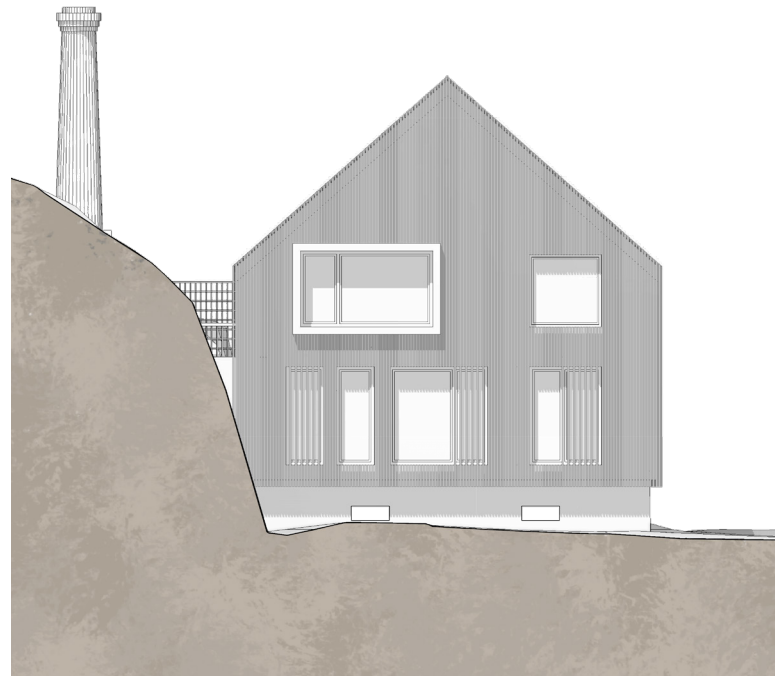
NE ELEVATION 1:100



NW ELEVATION 1:100



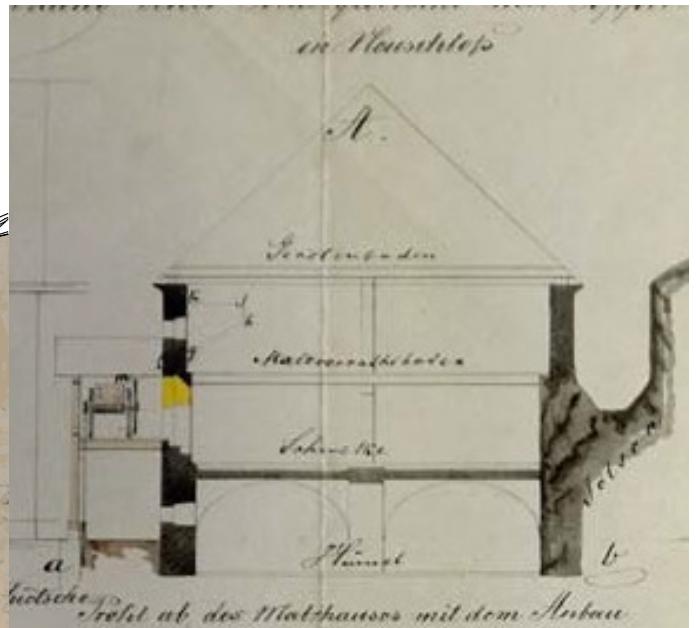
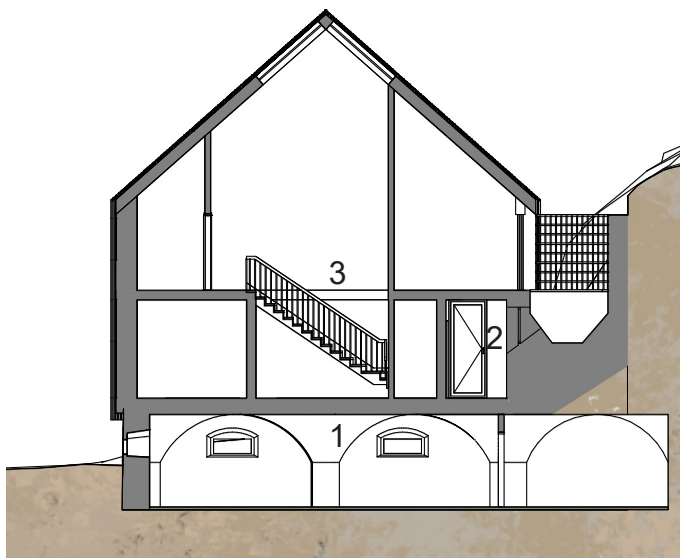
SE ELEVATION 1:100



SW ELEVATION 1:100

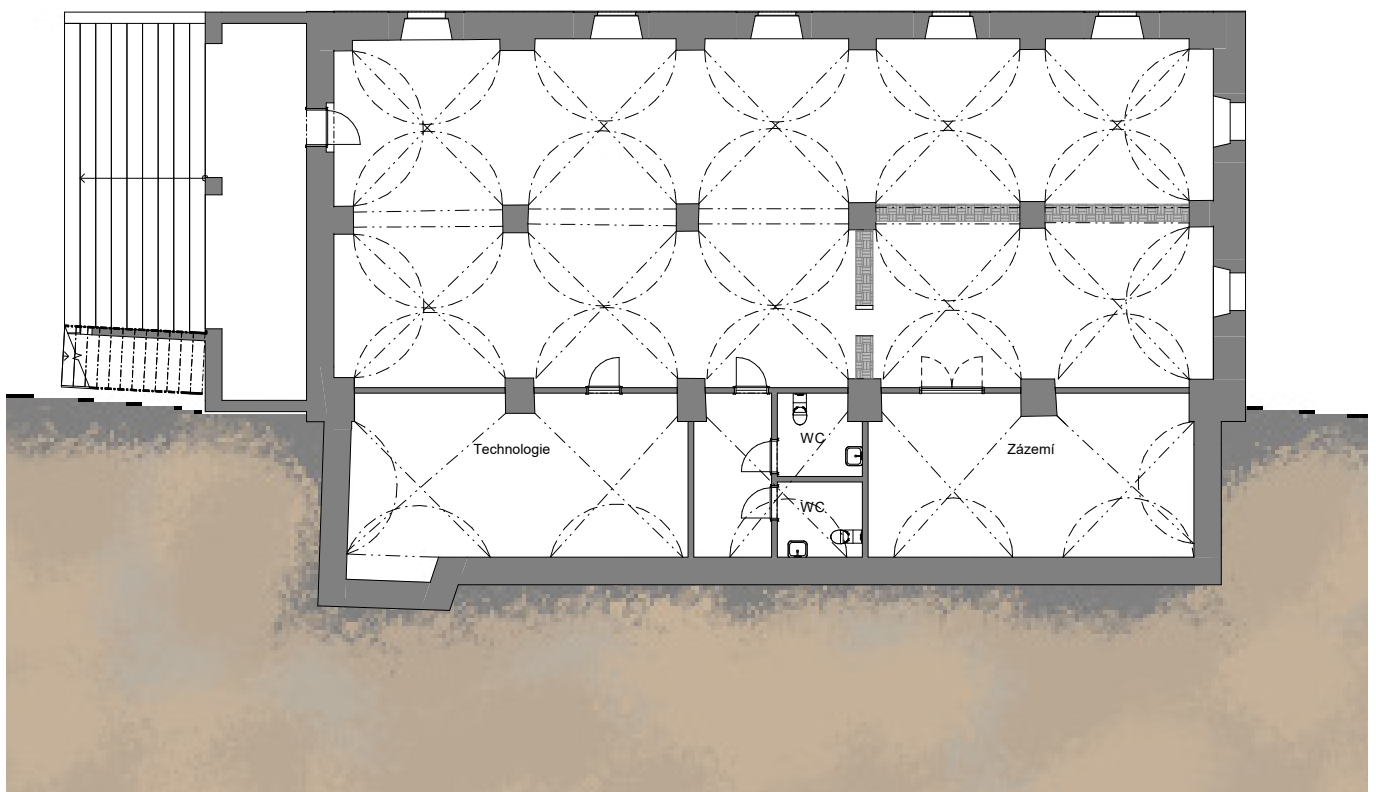


TYPICAL SECTION 1:200



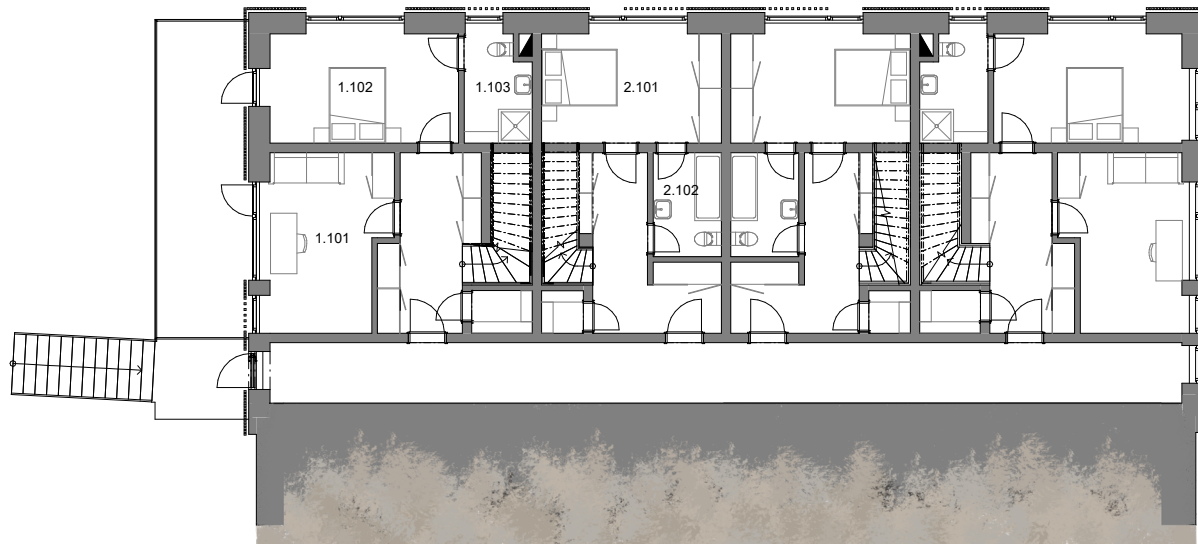
Relationship between the shape of the current and original building. 1. -public space, 2. -main corridor, 3. - two storey flat

BASEMENT FLOOR PLAN 1:200



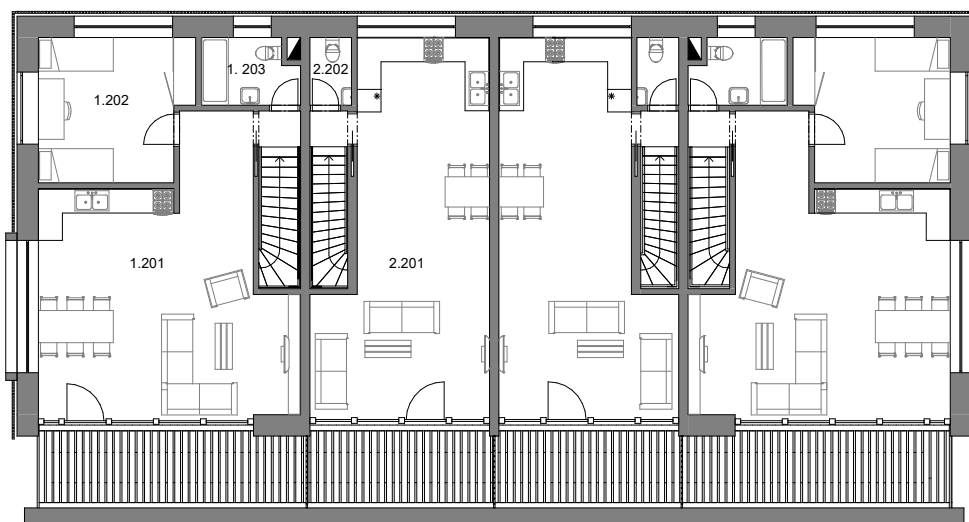
Floor plan showing the layout of the renovated vaulted basement

GROUND FLOOR PLAN 1:200



1.101 - study, 1.102 - bedroom, 1.103 - en-suite bathroom, 2.102 - bathroom, 2.101 - bedroom

1ST FLOOR PLAN 1:200



1.201 - living room, 1.202 - children's bedroom, 1.203 - bathroom, 2.201 - living room, 2.202 - lavatory

