

Dóra Varga, Zoltán Veres
ATU

TOWN OF SMALL DISTANCES

Libčice nad Vltavou

FA ČVUT
atelier Šindlerová, Maier, Vorel
ZS 2020/21

TABLE OF CONTENTS

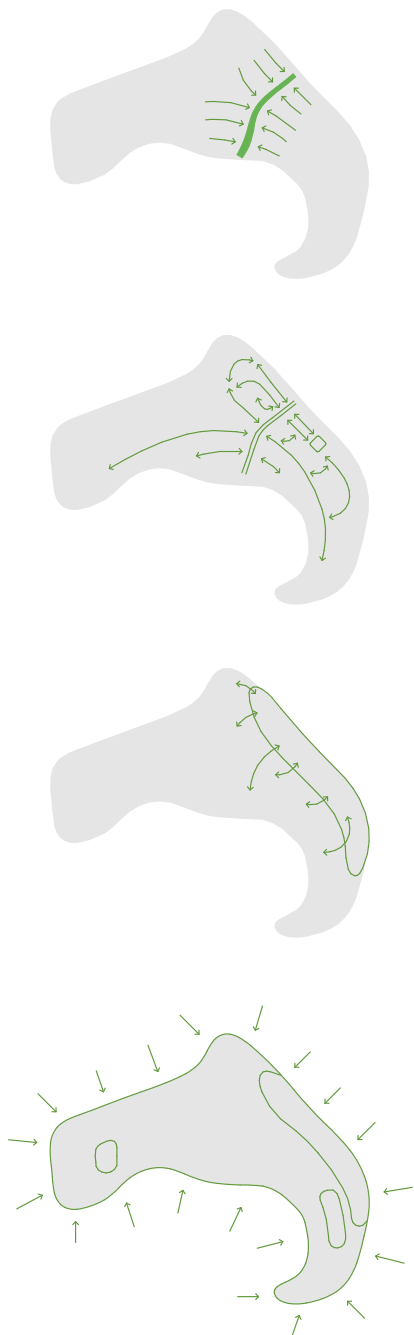
Vision	4
Final design	6
Transportation	8
Connections	9
Functions	10
Public spaces	11
Linear centre	12
Former industrial area	14
Details	16
Axonometric views	26
Sections	30
Bird eye perspectives	34

VISION

Our vision is to create a town of small distances. In this town everything is quickly accessible without a car. Because of the good pedestrian and bicycle connections, the car usage in the town is reduced. The streets are safer, and the air is less polluted. For the long distances people prefer traveling by train rather than by car, it is much quicker. The target group of this town are young families.

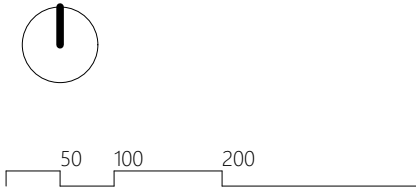
GOALS

- 1 To define and create a town centre.
The town lacks a place where people can gather and serve their everyday needs.
- 2 Better pedestrian connections.
It also means to reduce the car traffic.
- 3 Revitalize the riverside.
Creating new residential, office areas, a cultural centre, and a long green path along the river.
- 4 Stop sprawling.
Which means, that we will not build through the current boundaries. Focus is on the infill development.



FINAL DESIGN

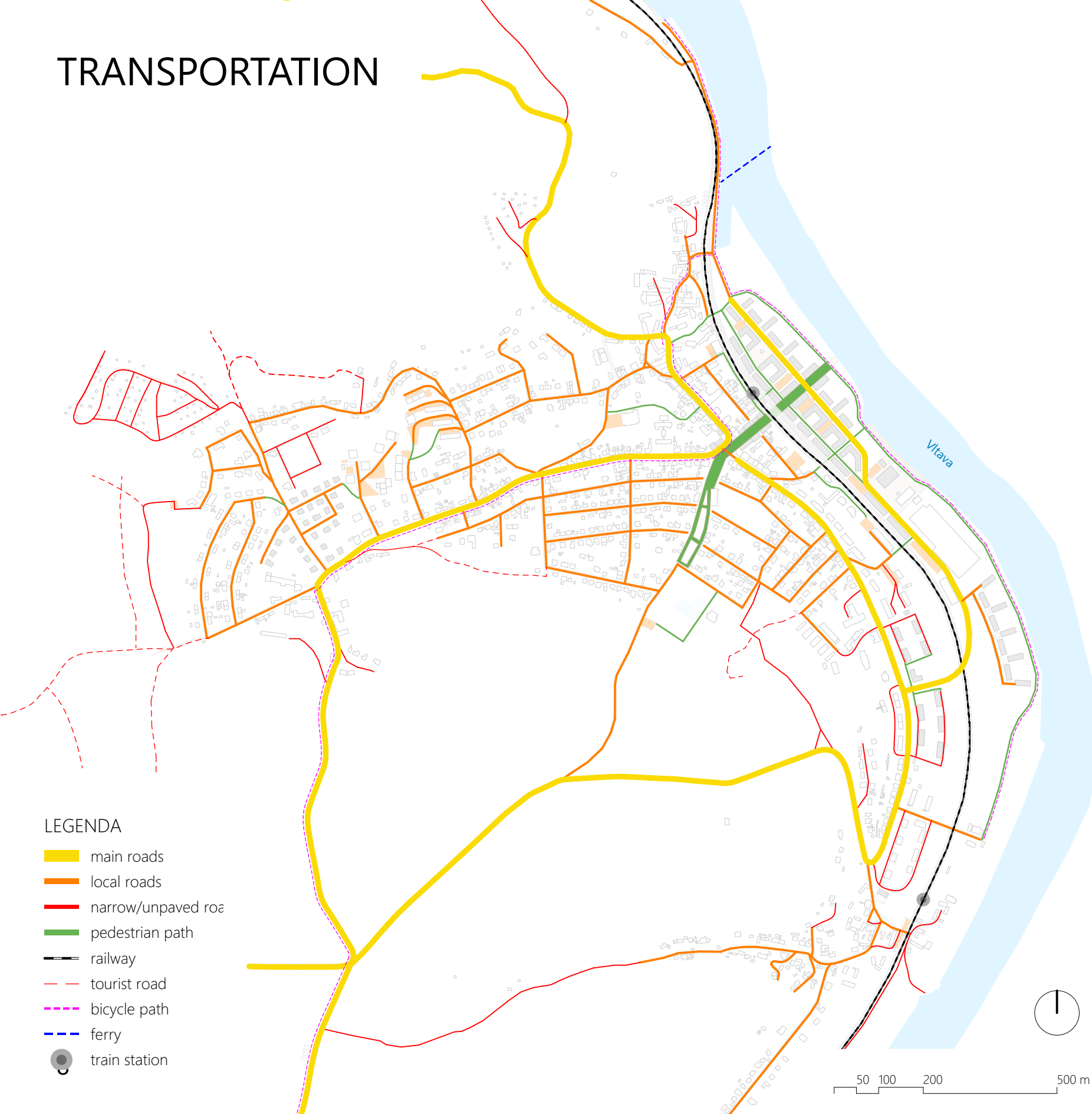
- LEGENDA
- existing structures
 - new buildings
 - car roads
 - pedestrian paths
 - railway area
 - town greenery
 - forest
 - water surfaces



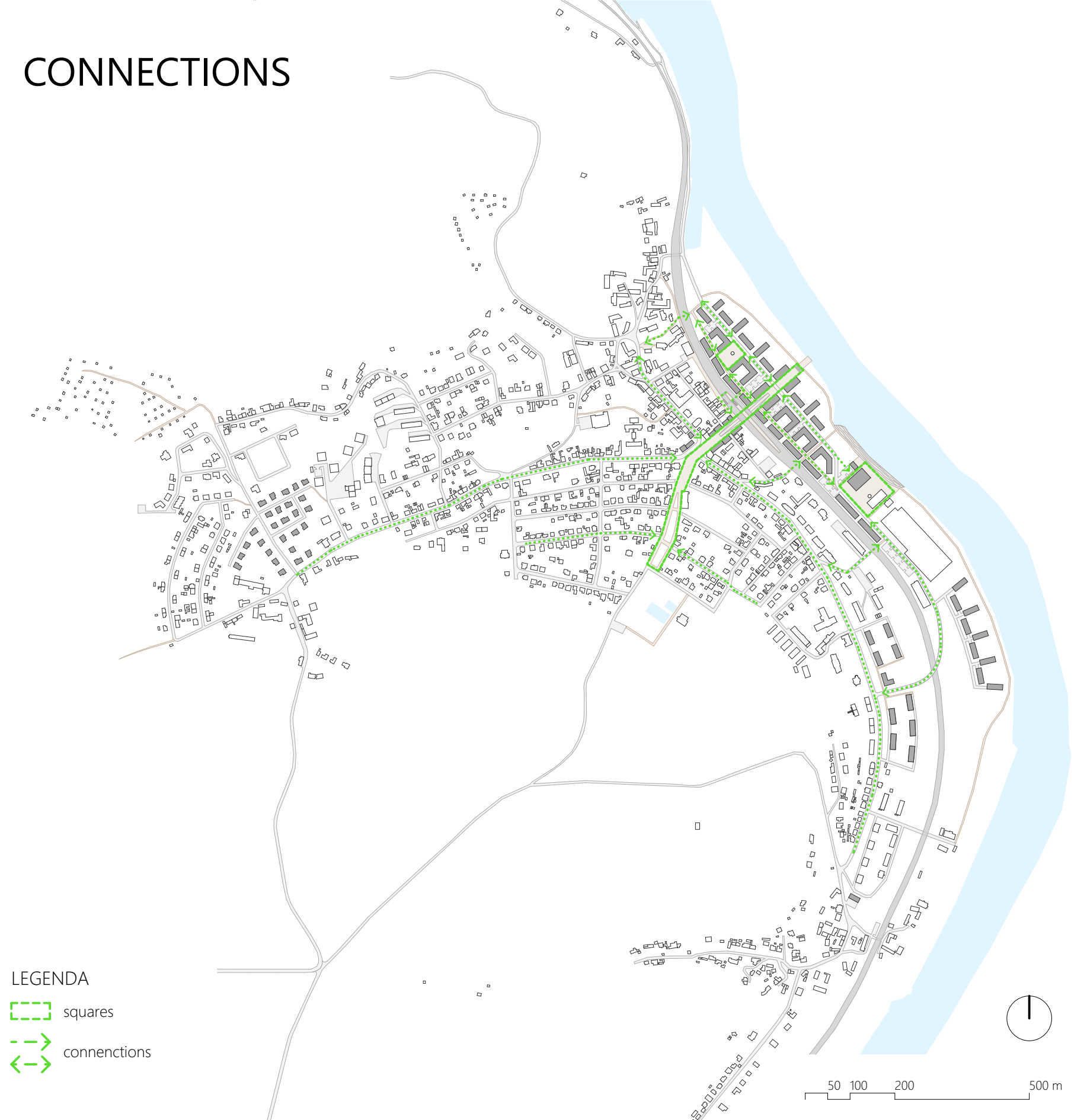
00 m



TRANSPORTATION



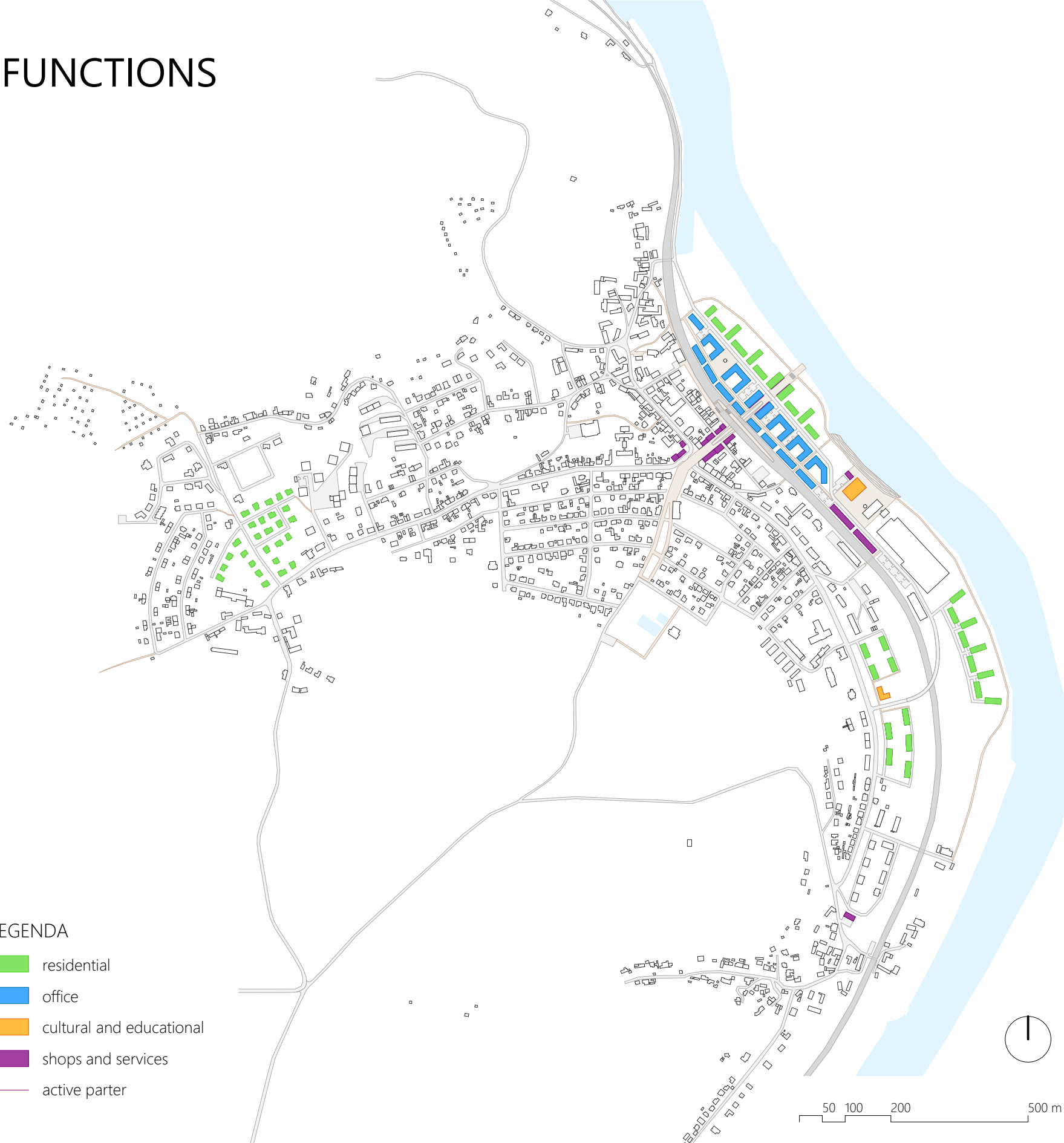
CONNECTIONS



FUNCTIONS

LEGENDA

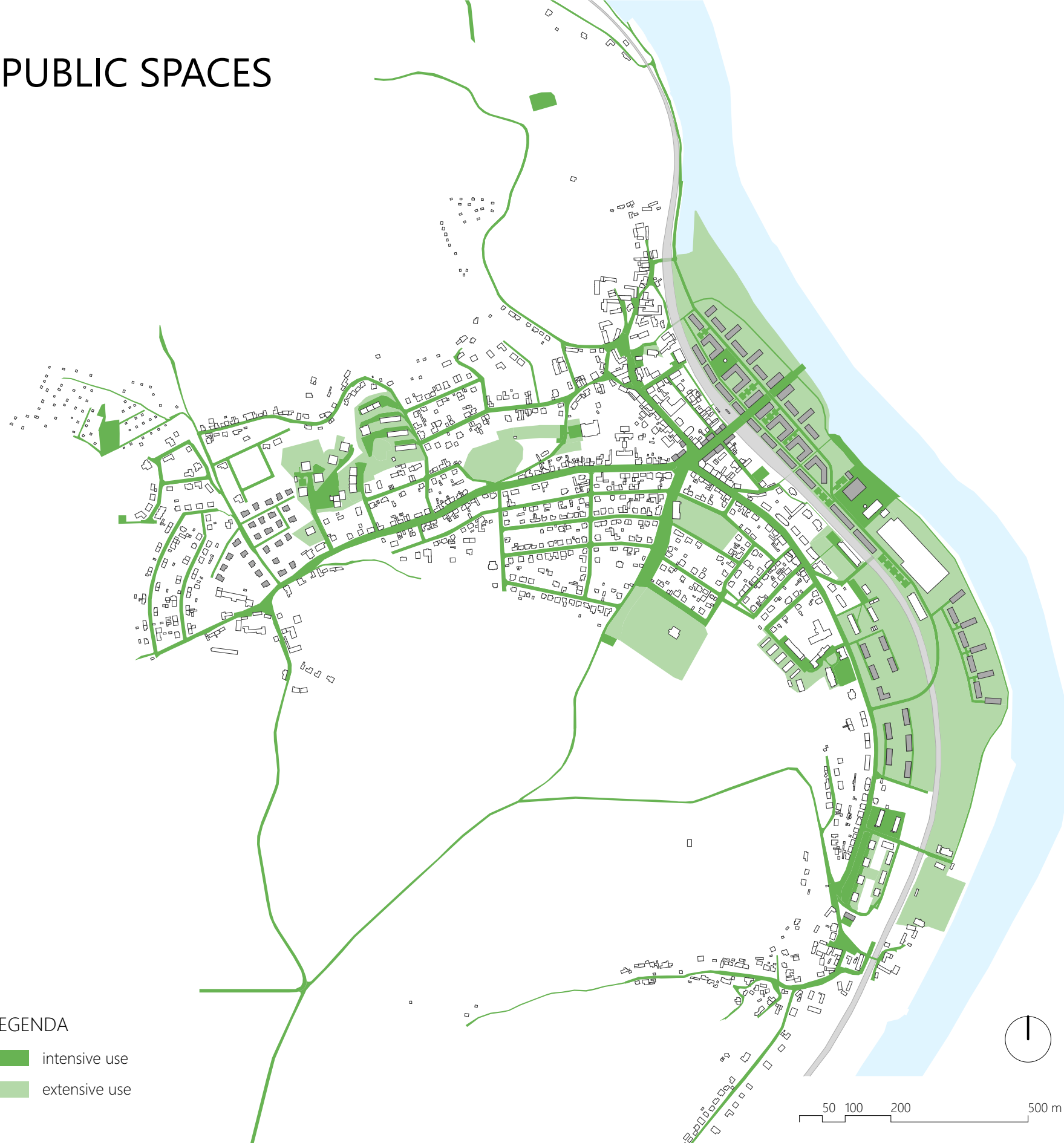
- residential
- office
- cultural and educational
- shops and services
- active parter



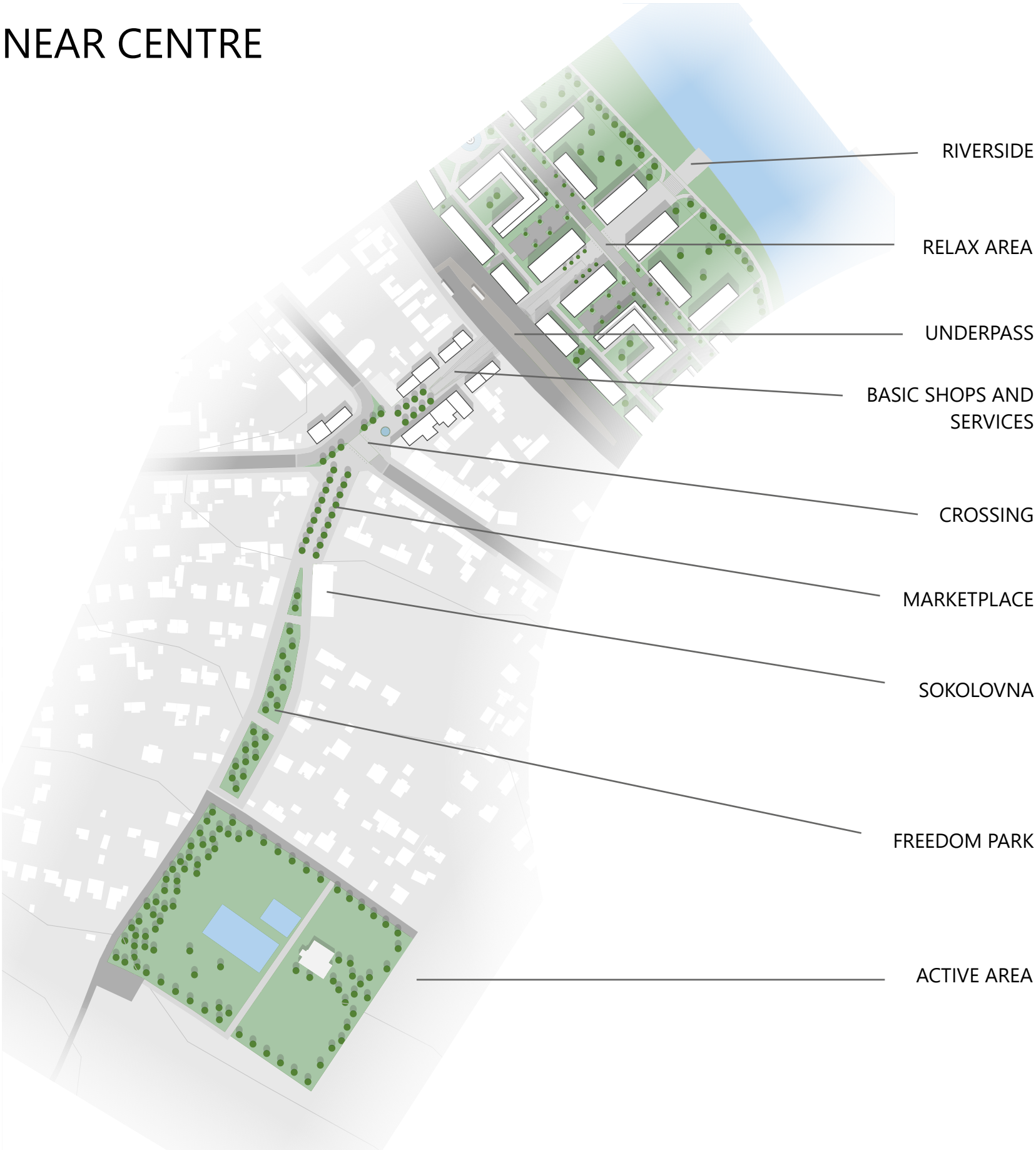
PUBLIC SPACES

LEGENDA

- intensive use
- extensive use



LINEAR CENTRE



We created a new linear centre through the central crossing of the town. The new centre connects the active area of the town with the riverbank.

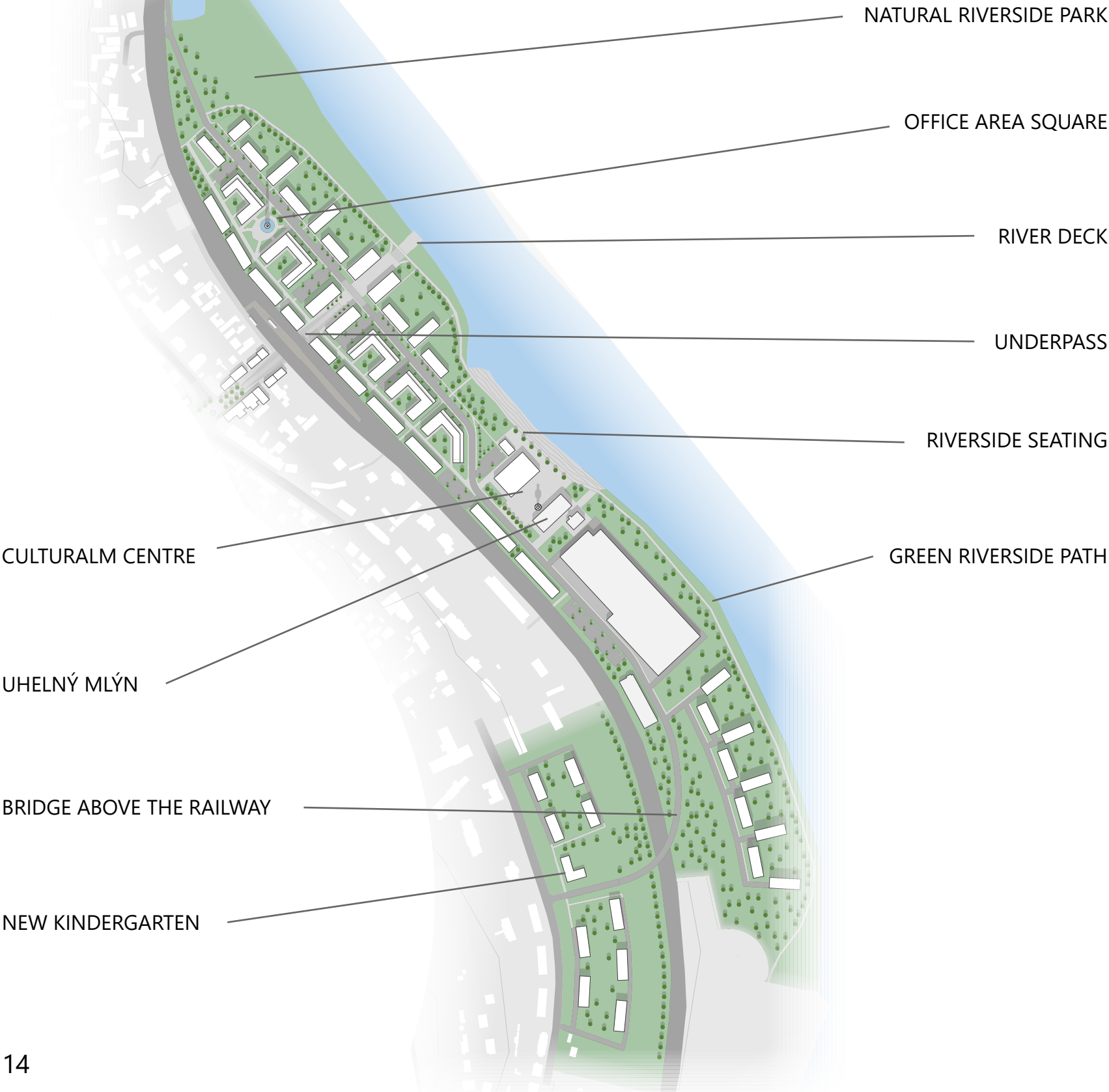
The linear centre is quickly accessible across the town, it gathers the people and encourage them to a more active social life.

On the active end of the centre will be all the fun activities, including the existing pool area, a new extreme playground, skatepark and multifunctional court. These activities will attract people from the whole town.

On the other end of the linear centre is the access to the riverbank with beautiful views. Here will be services like the restaurant, coffee shop and specialized shops. People come here to relax.

The riverside area is connected to the town with a wide underpass under the train station. The slope is quite long to provide safe and comfortable conditions for both walking and cycling. The sides of the slope are stairs.

FORMER INDUSTRIAL AREA



In the middle of the brownfields, we created a new cultural “centre”, which consists of the existing reconstructed building of the Uhelný Mlýn and a new community hall. Between the two buildings is a square where outdoor exhibitions can be held, amongst other events.

Besides the Uhelný Mlýn, we preserved a shop, one industrial building, where we plan to place different productions, and the chimney on the north, which now serves as a monument in the office area square.

A new road will run across the whole area. It is a new way to the northern part of the town, which helps to reduce the traffic from the current centre. The road separates the new office area from the residential buildings.

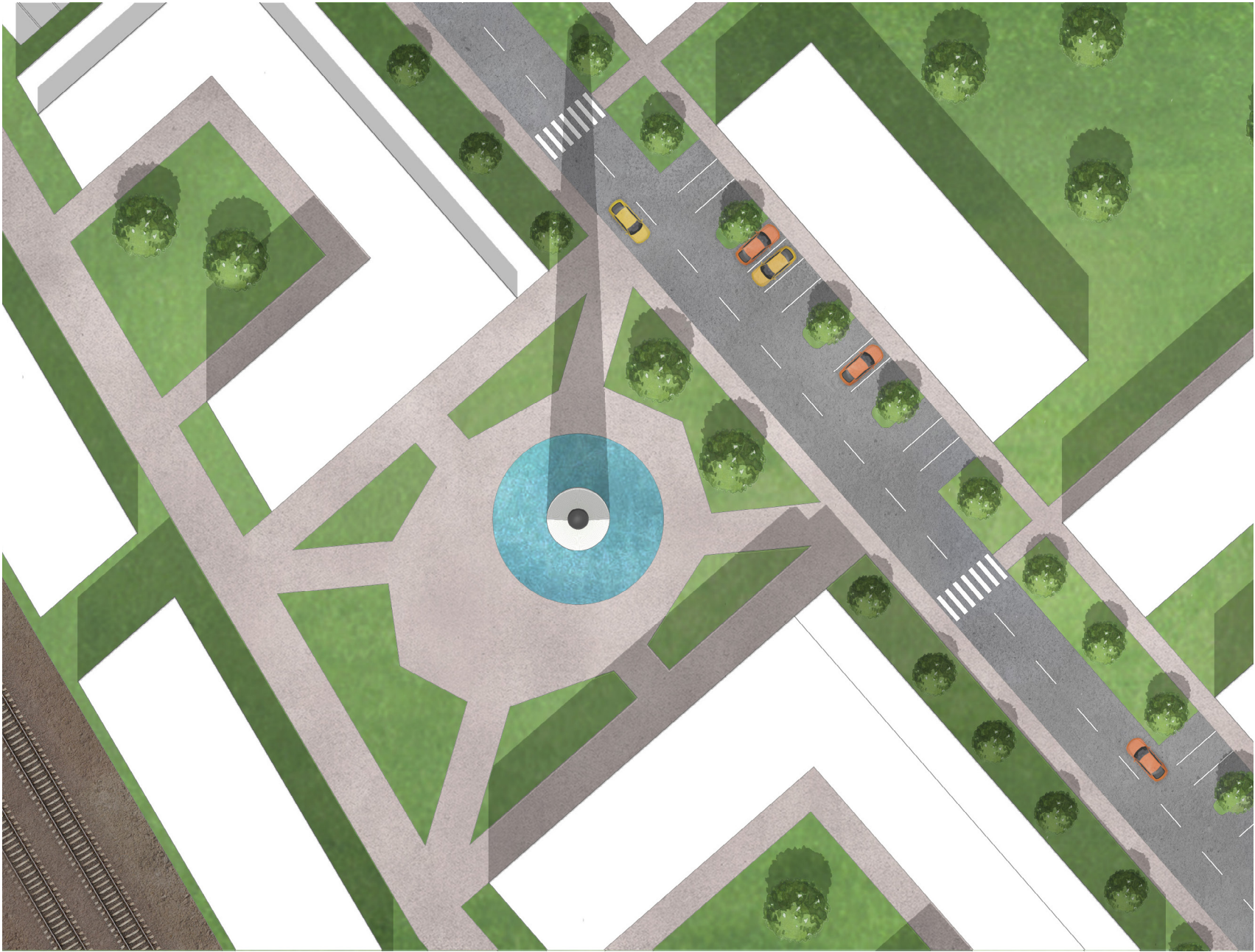
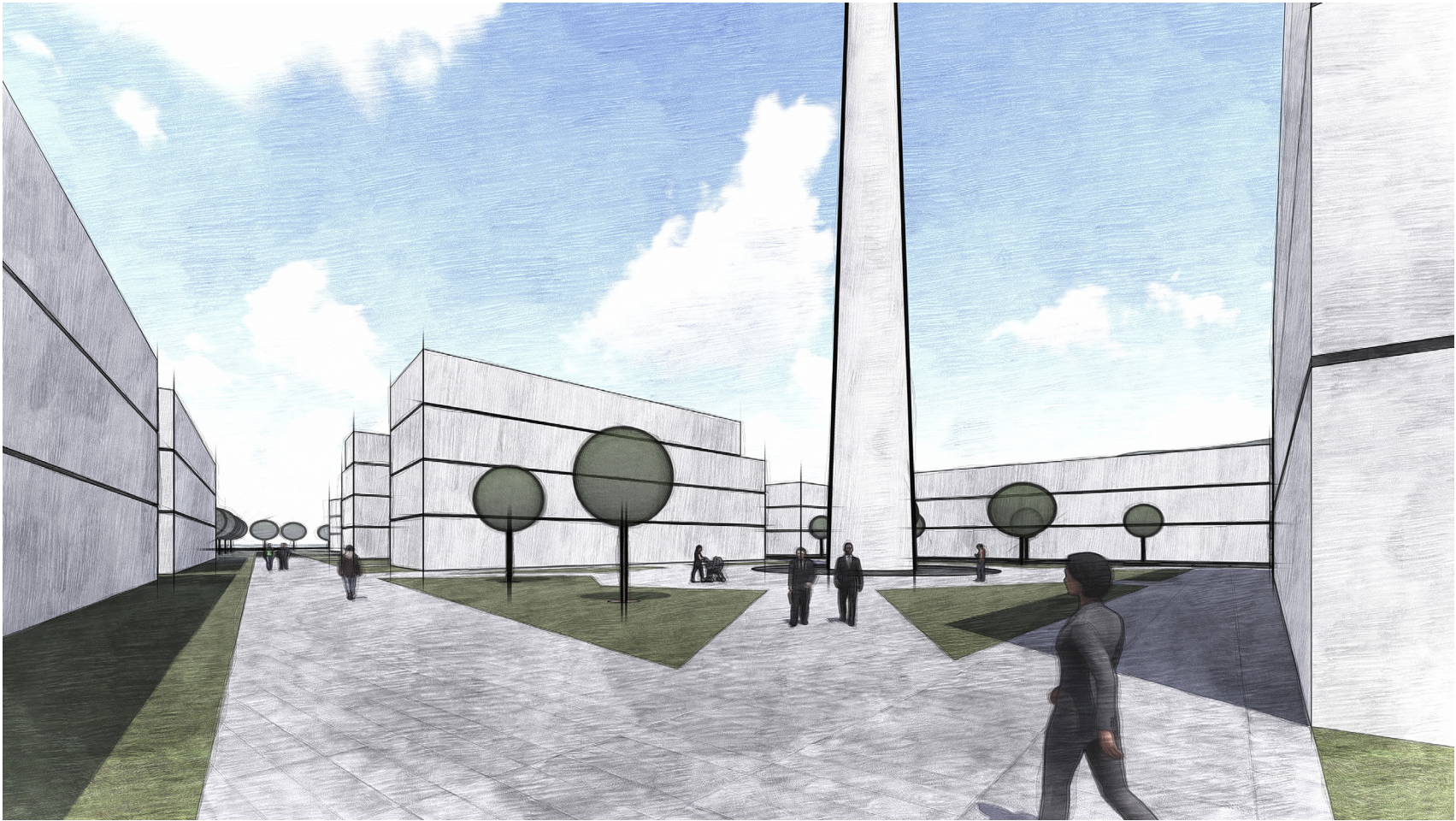
The office area has a good connection to the train station. We created a new underpass that leads straight to the platform.

The residential buildings will encompass private parks between them. Because of the new apartments, the town will need a new kindergarten to serve the southern areas of the town.



Detail D1

The office square area



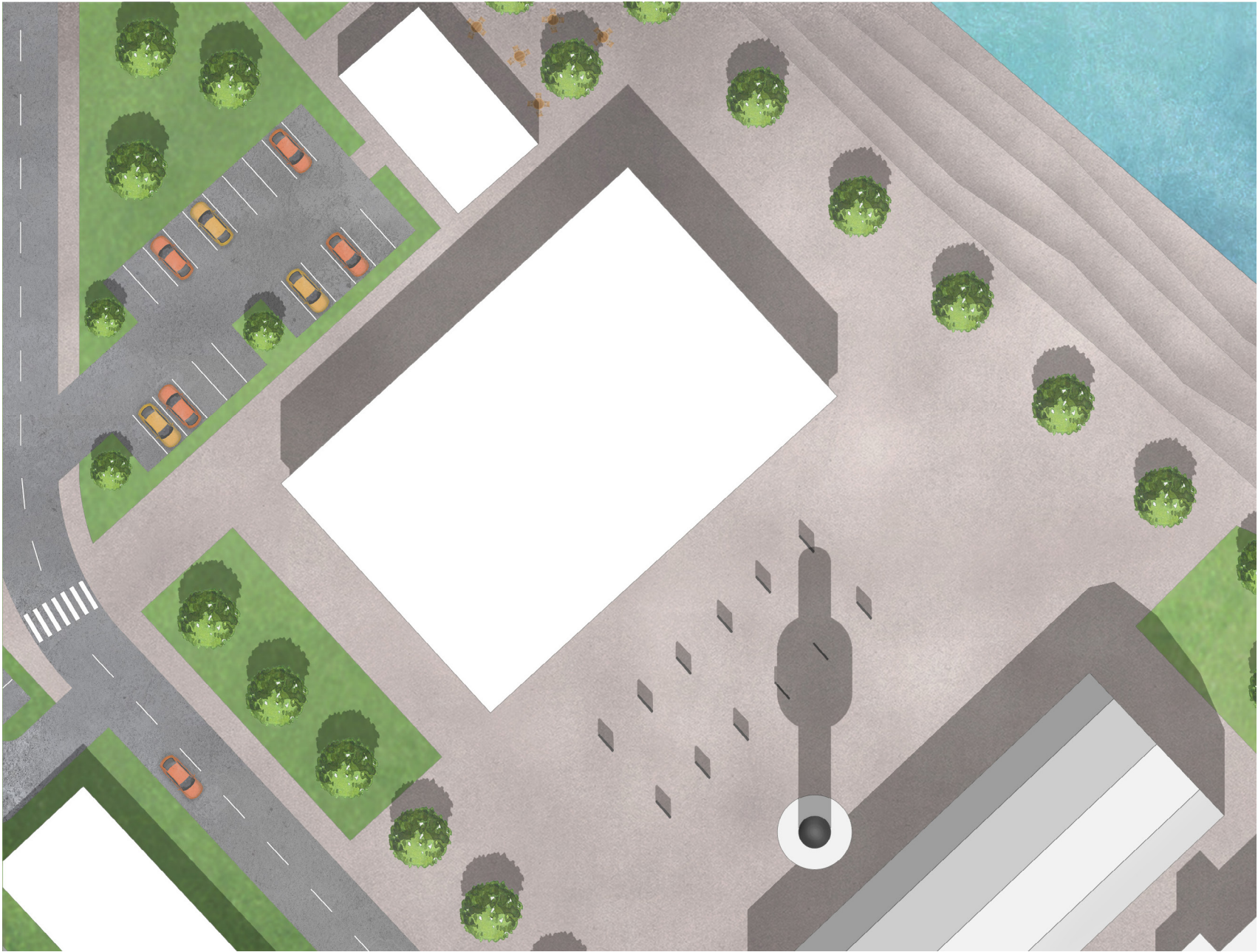
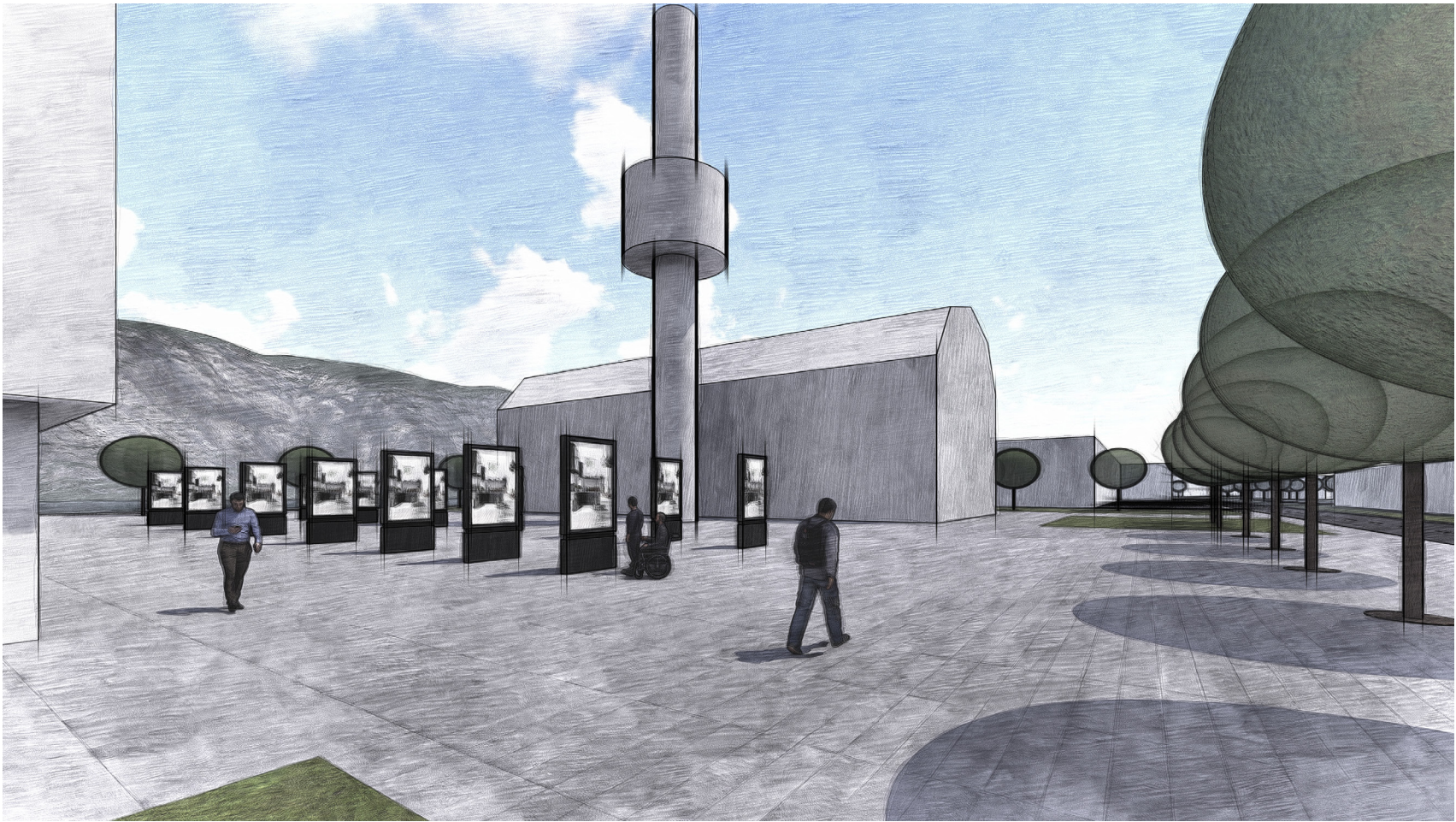
Detail D2

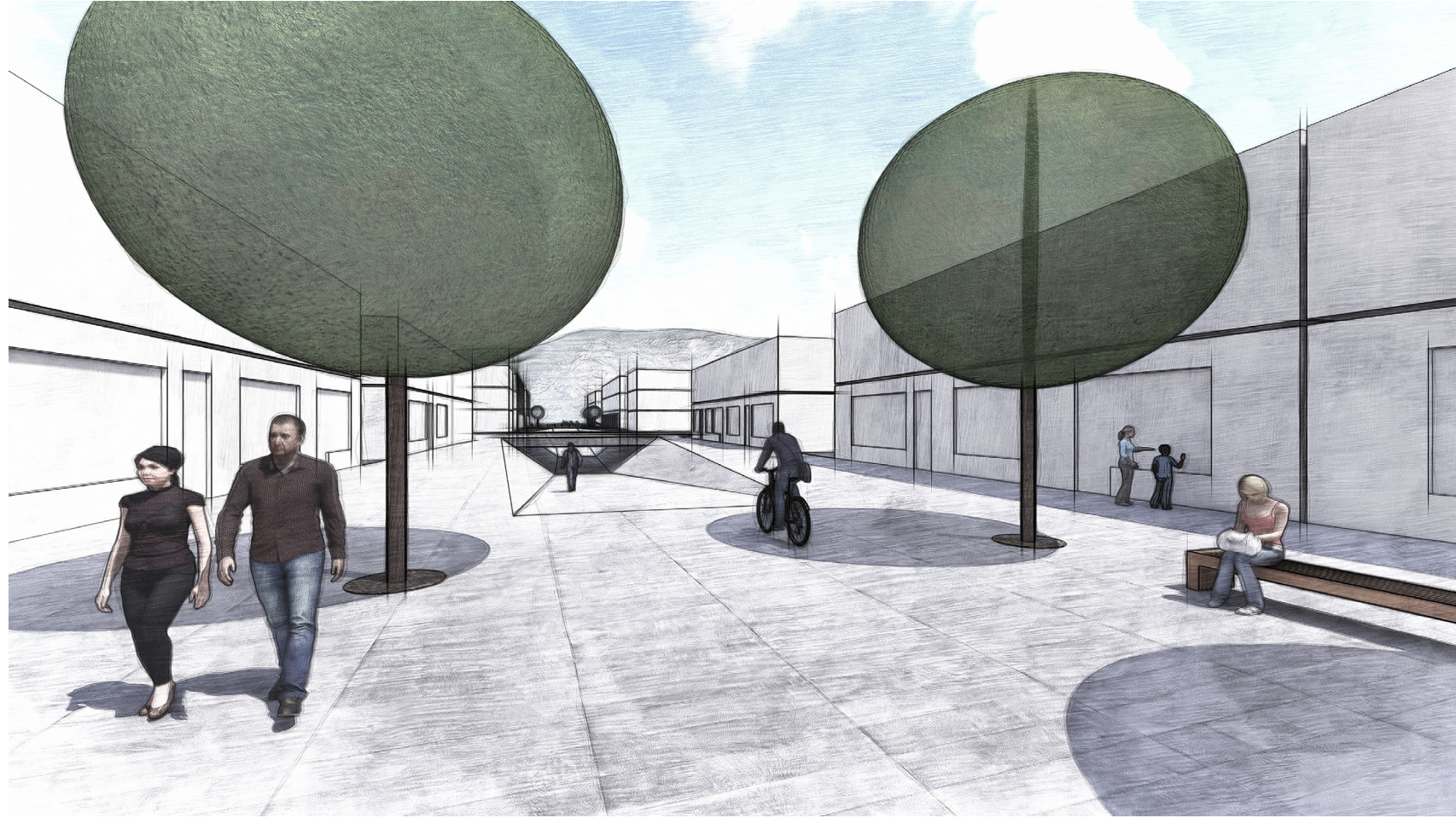
The crossing on the linear cenrte



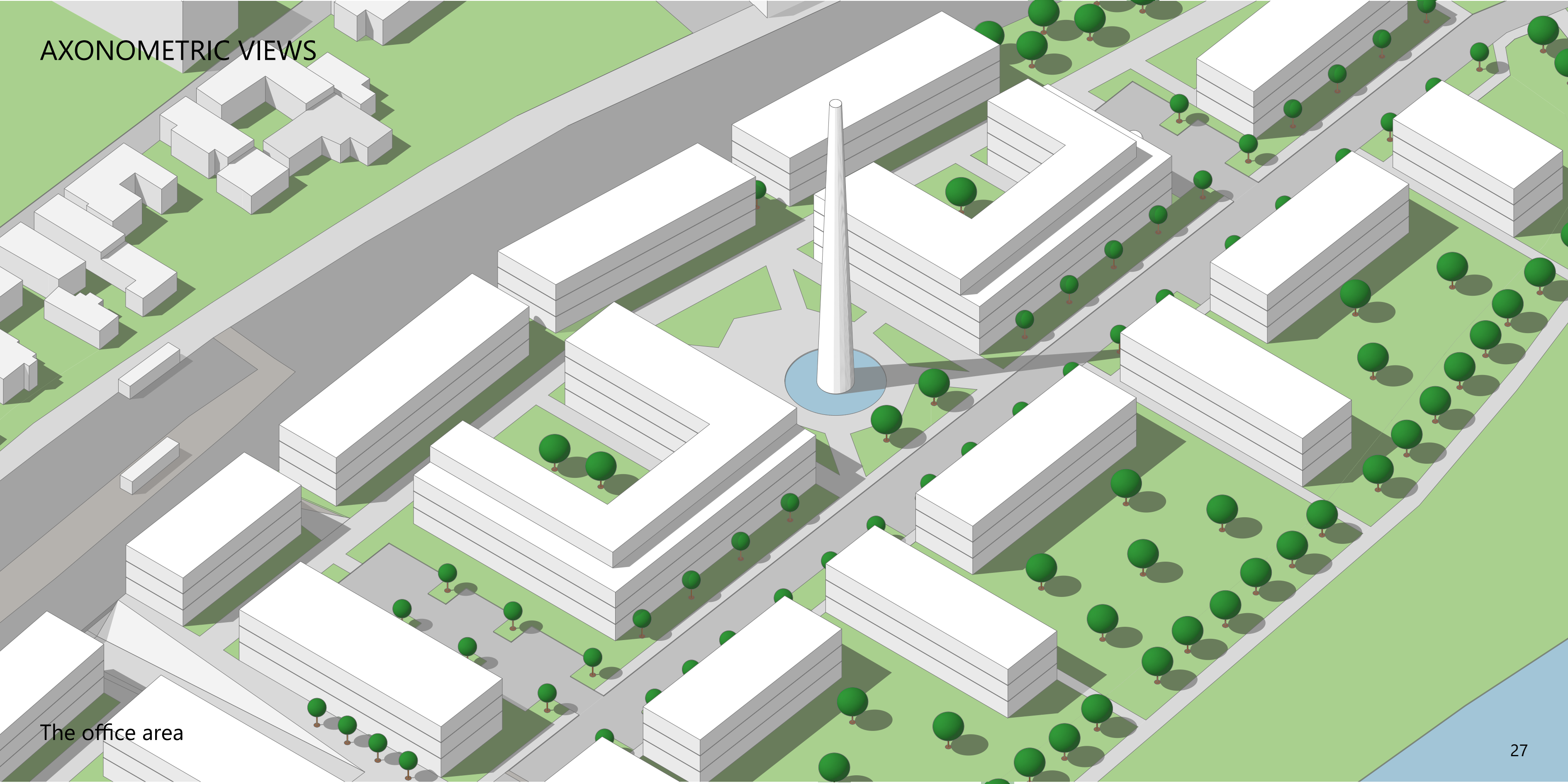
Detail D3

The cultural centre



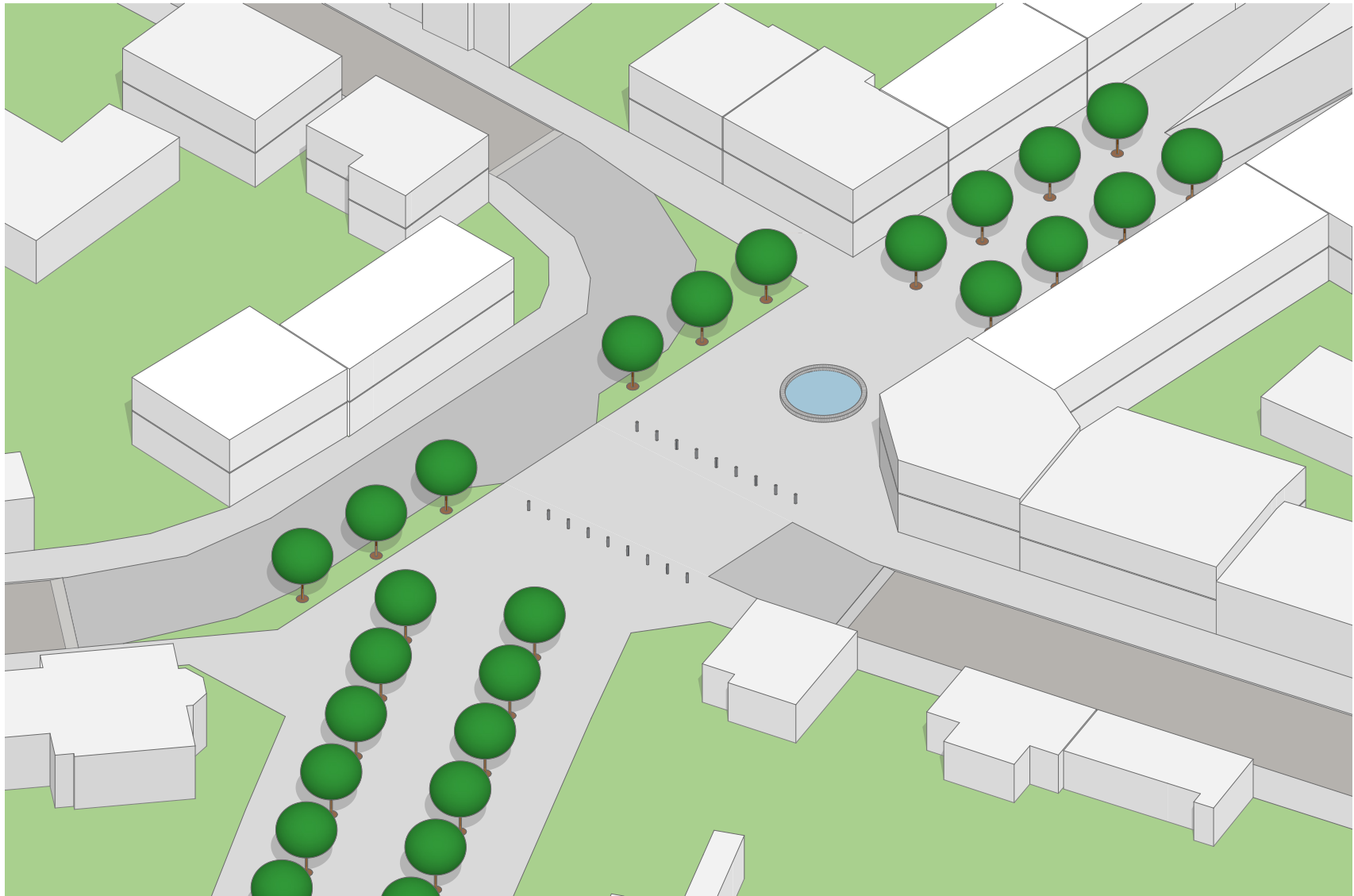


AXONOMETRIC VIEWS

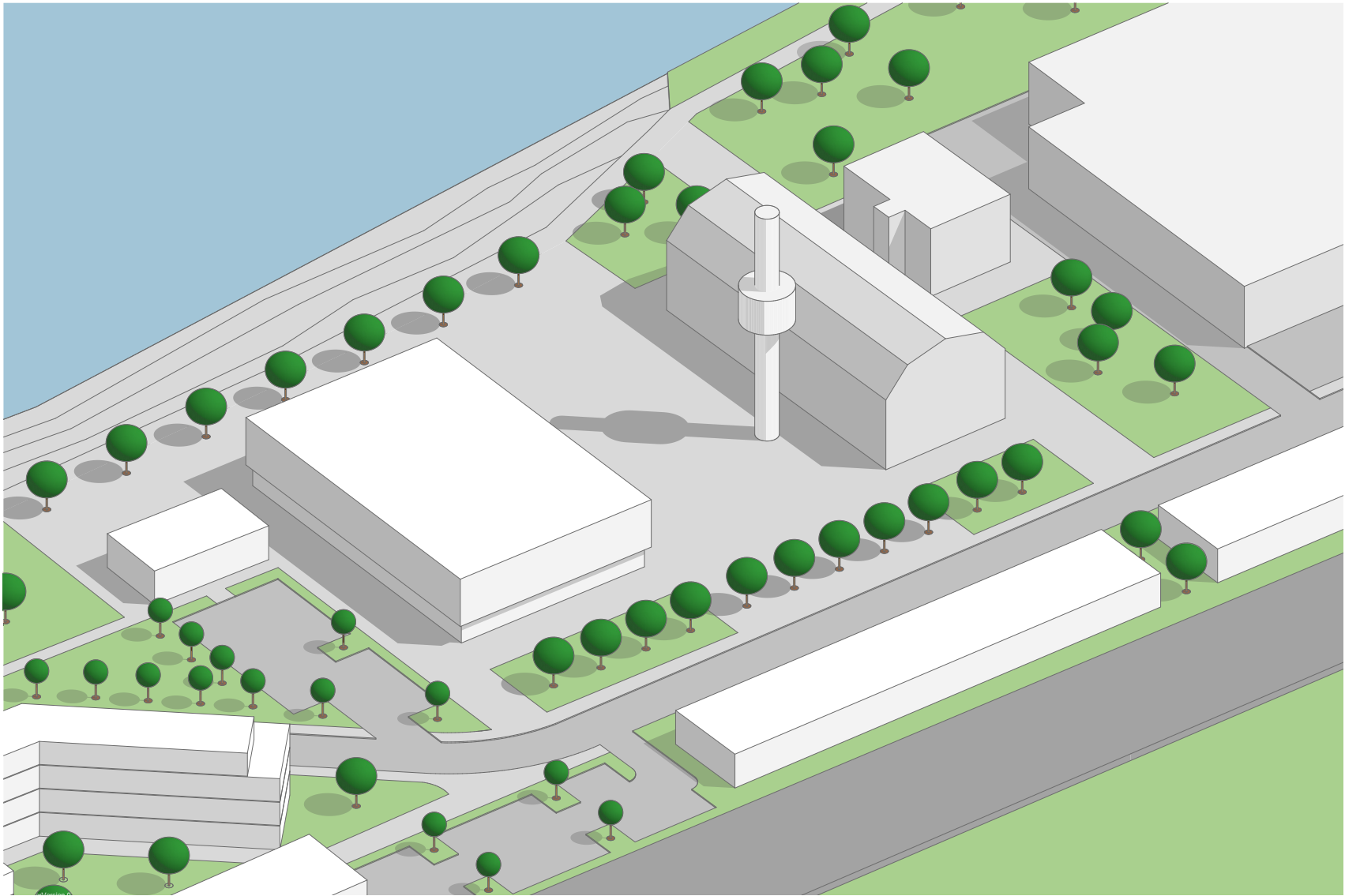


The office area

The crossing in the centre



The new cultural centre

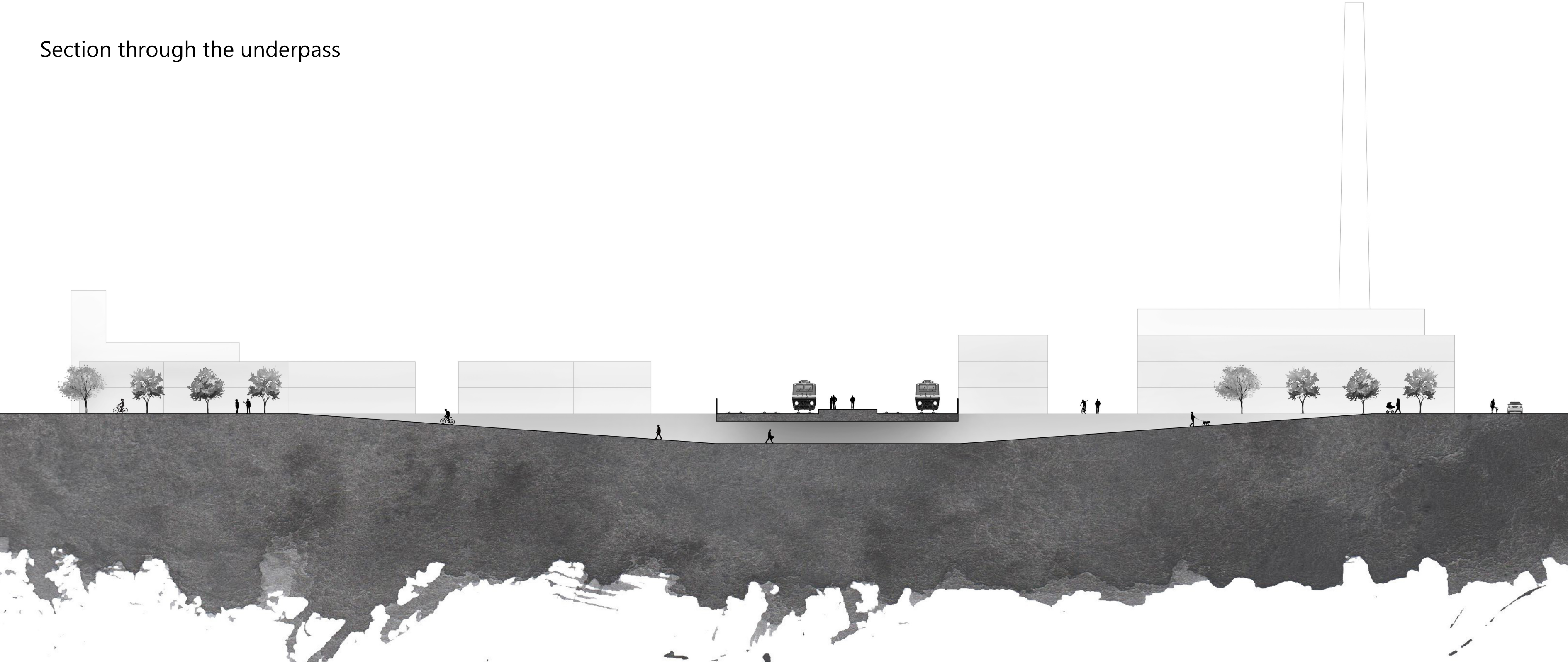


SECTIONS

Section between the office and residential buildings



Section through the underpass



BIRD EYE PERSPECTIVES

