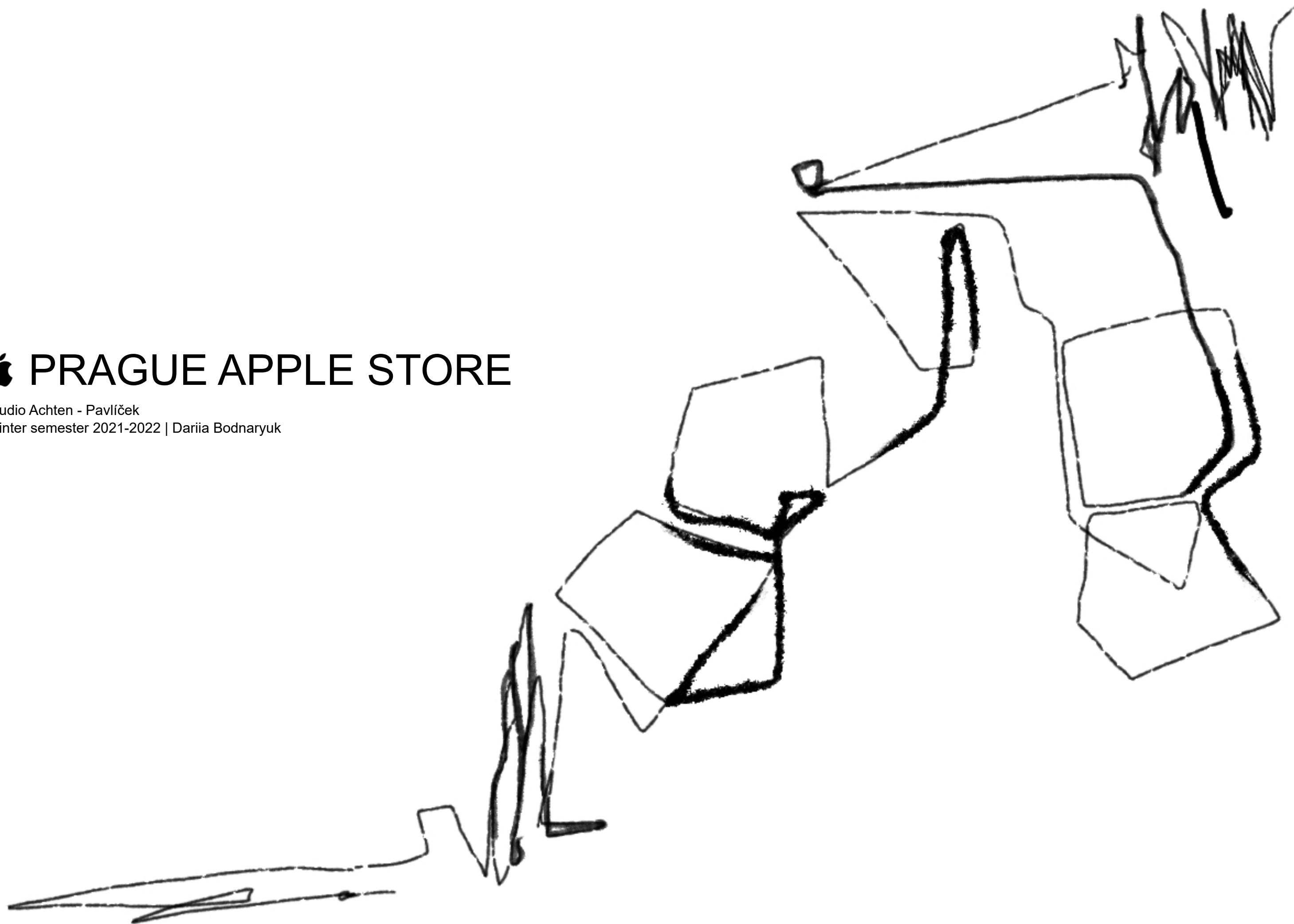
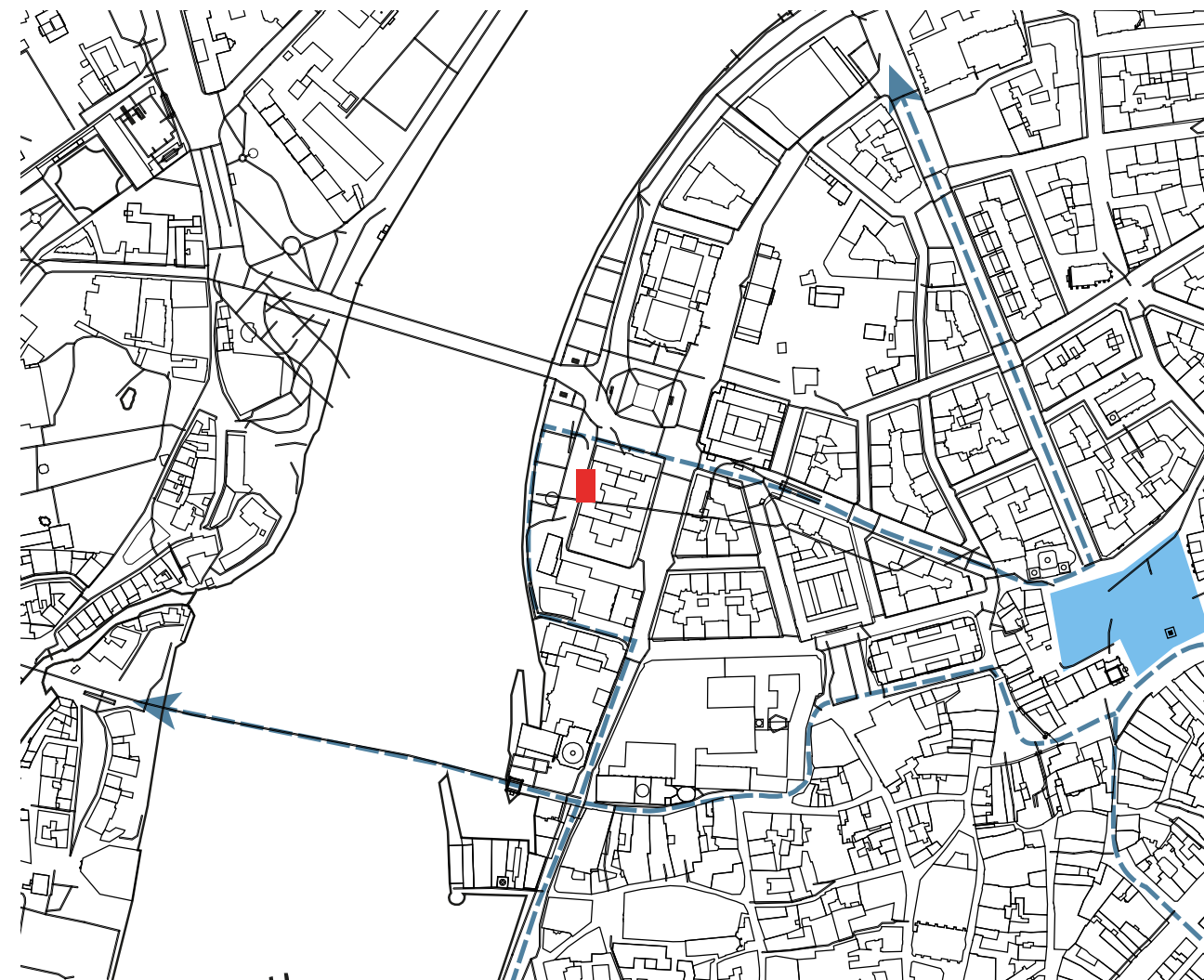
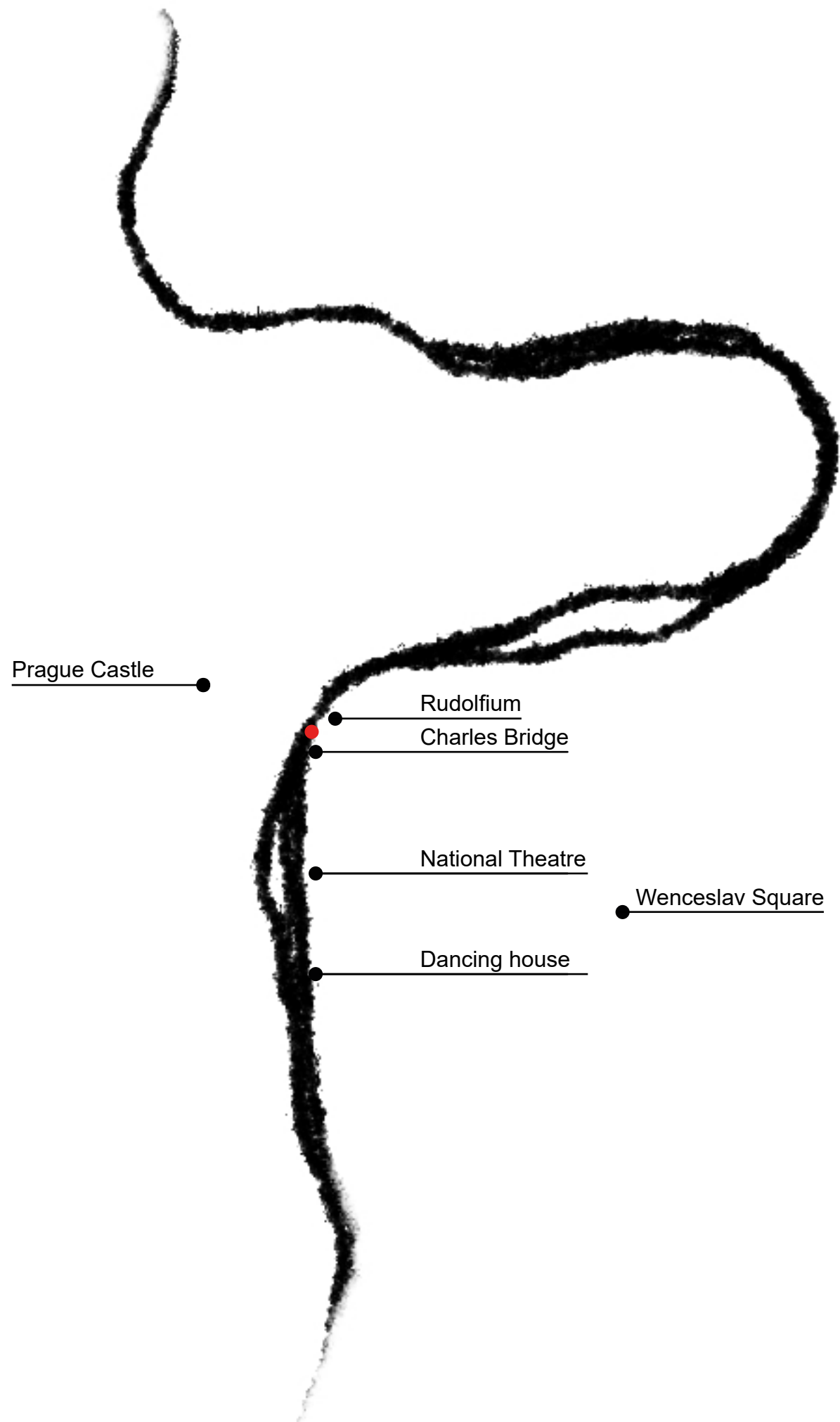


PRAGUE APPLE STORE

Studio Achten - Pavlíček

Winter semester 2021-2022 | Dariia Bodnaryuk

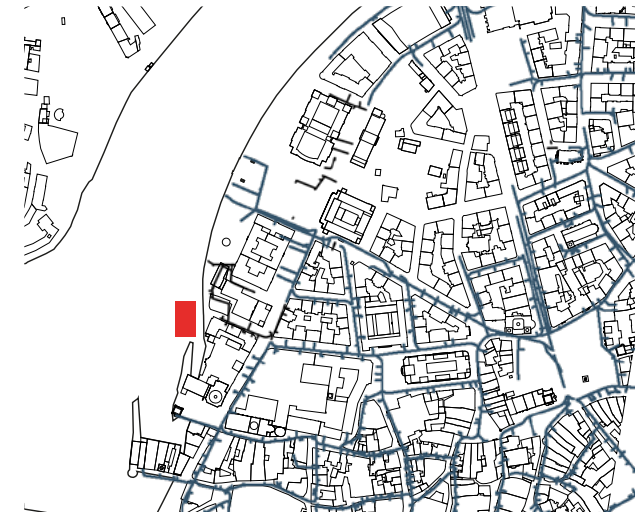
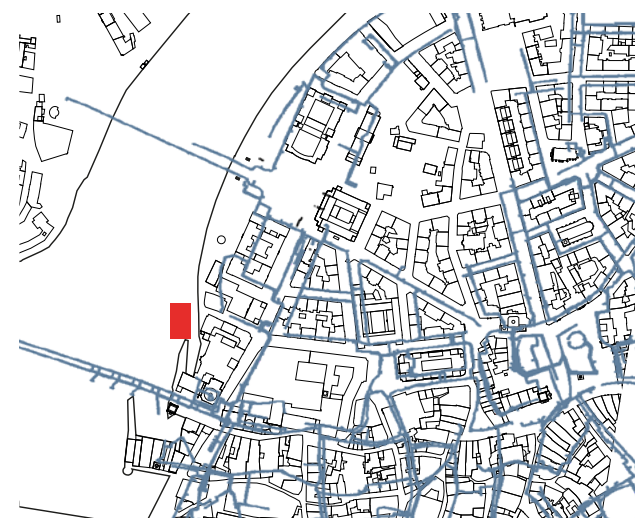




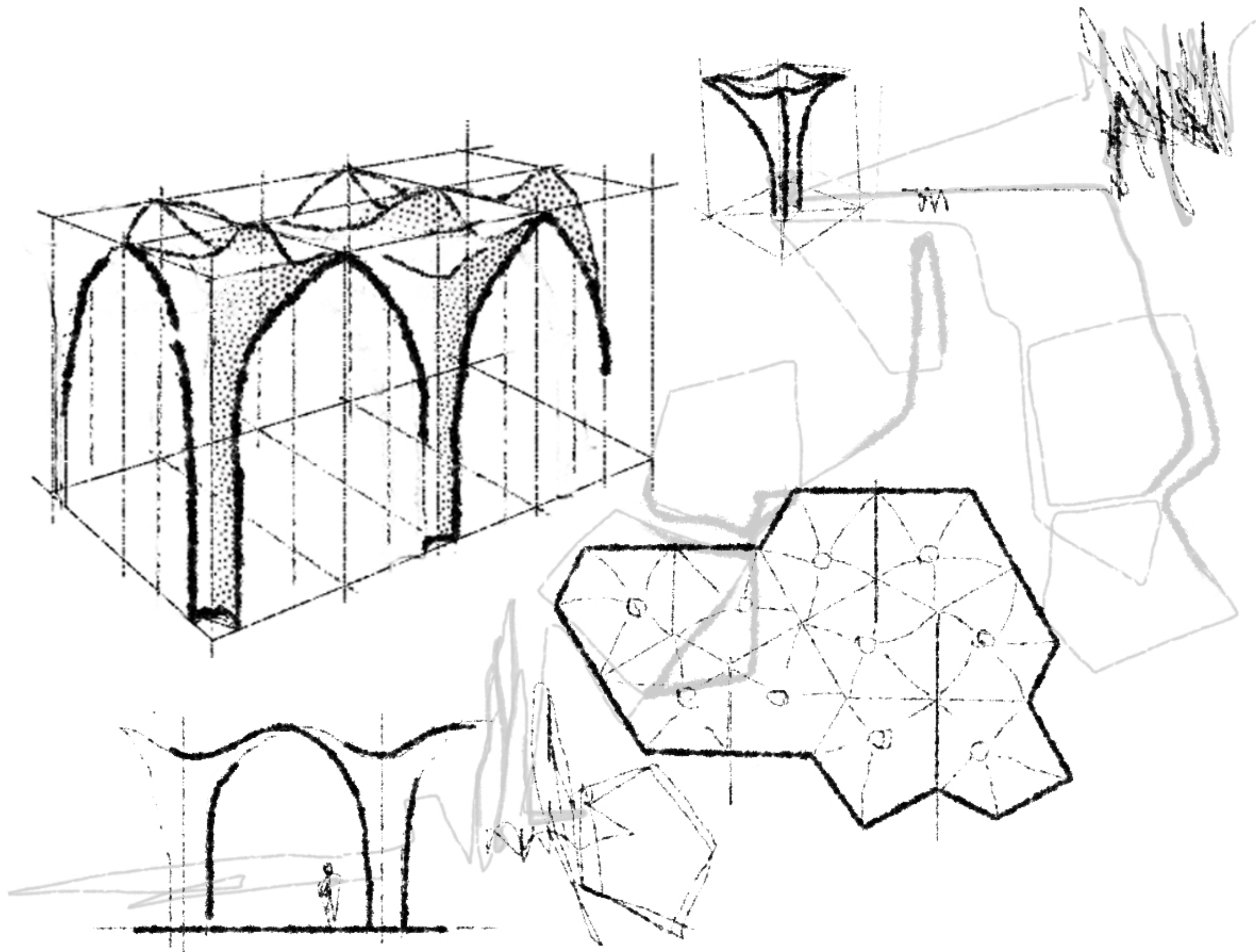
The most active pedestrian ways



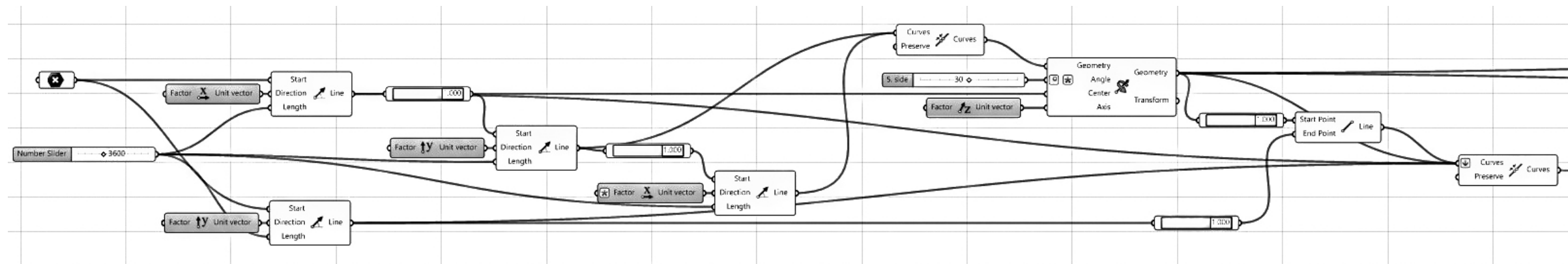
N
 Situation plan
 0 1km



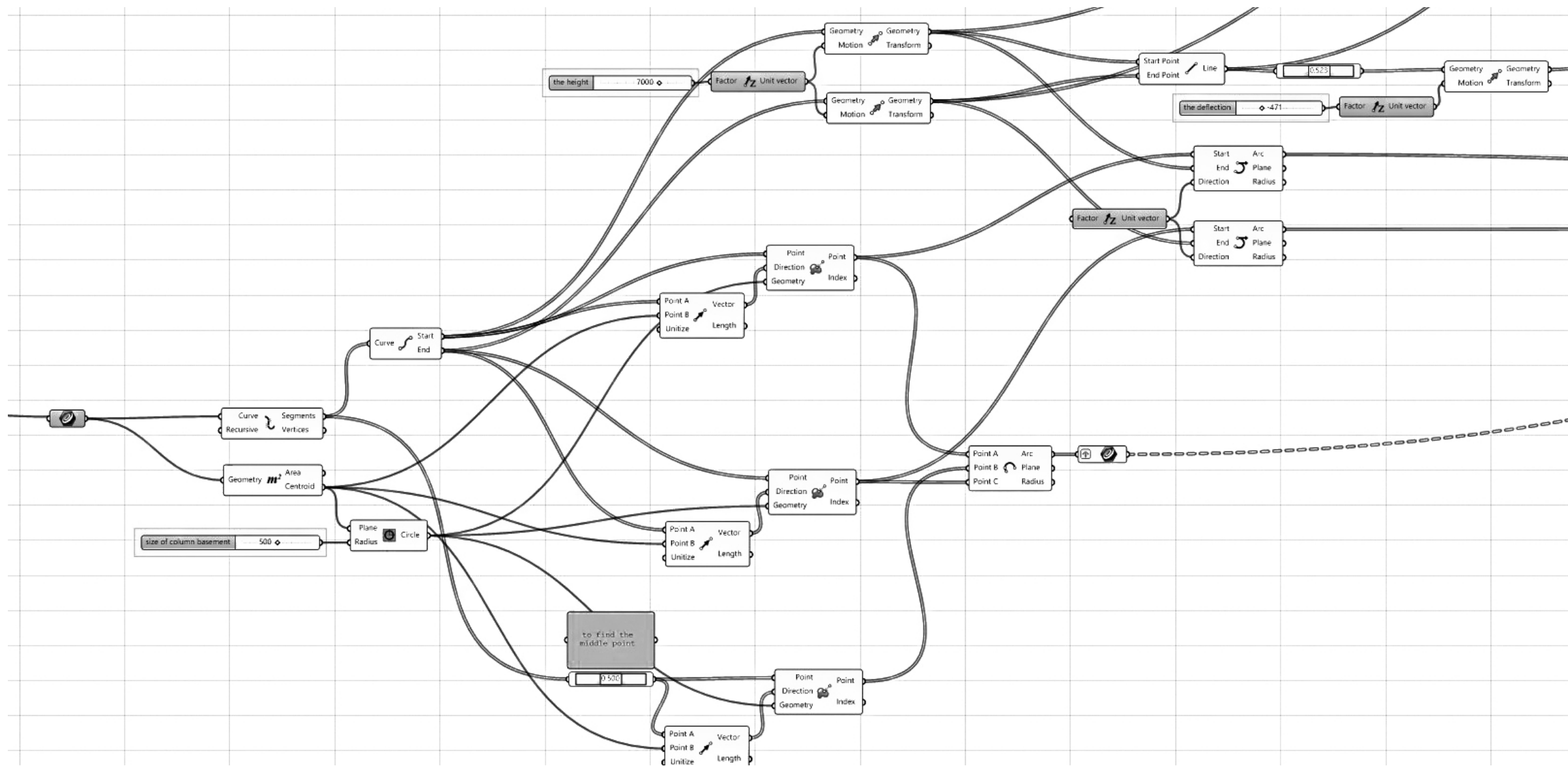
- Connection to the technical
infrastructure of the city**
1. Watter supply
 2. Sewerage
 3. Electricity



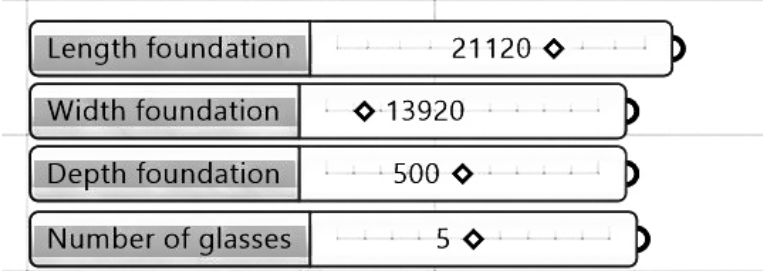
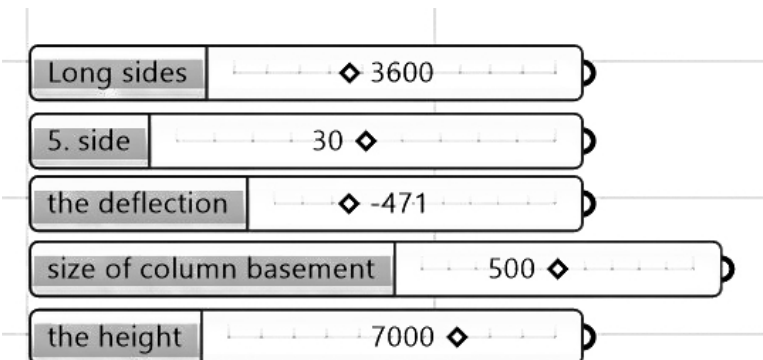
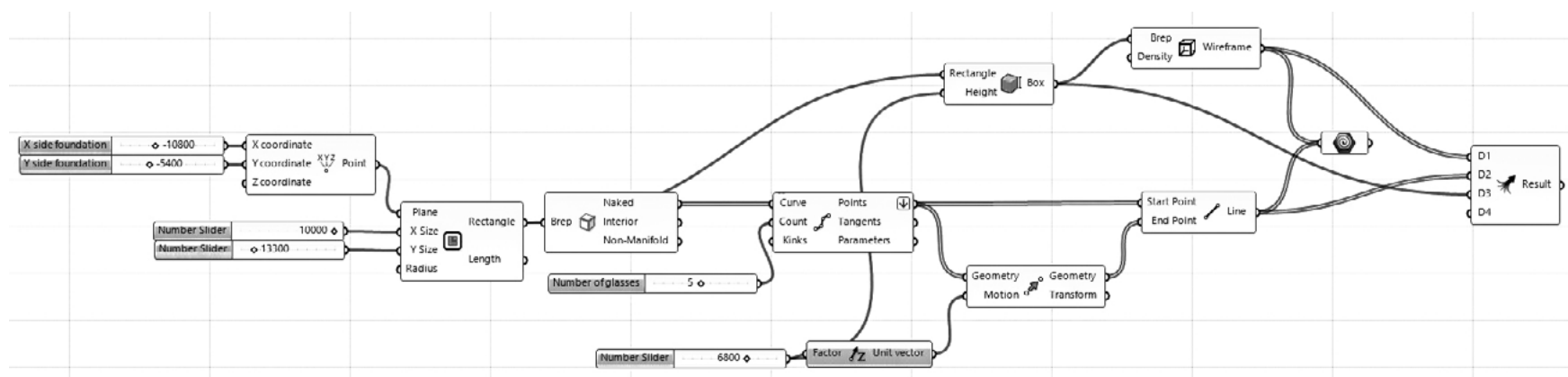
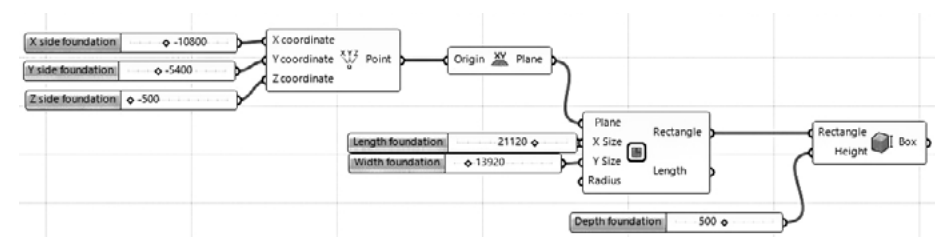
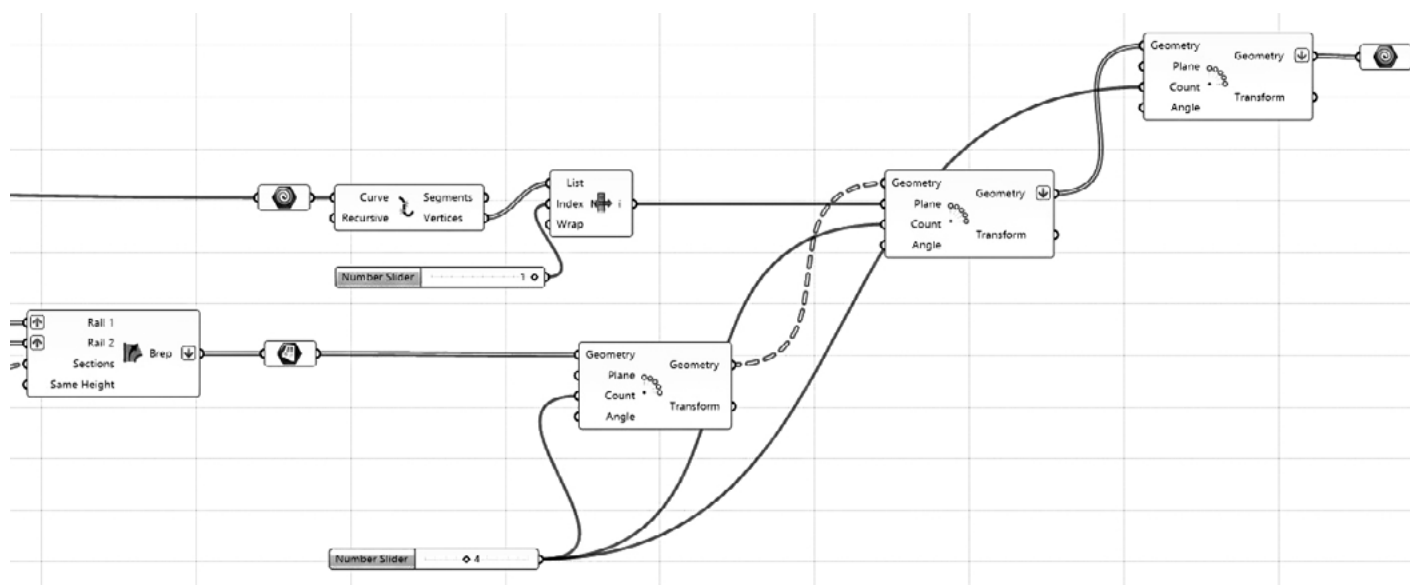
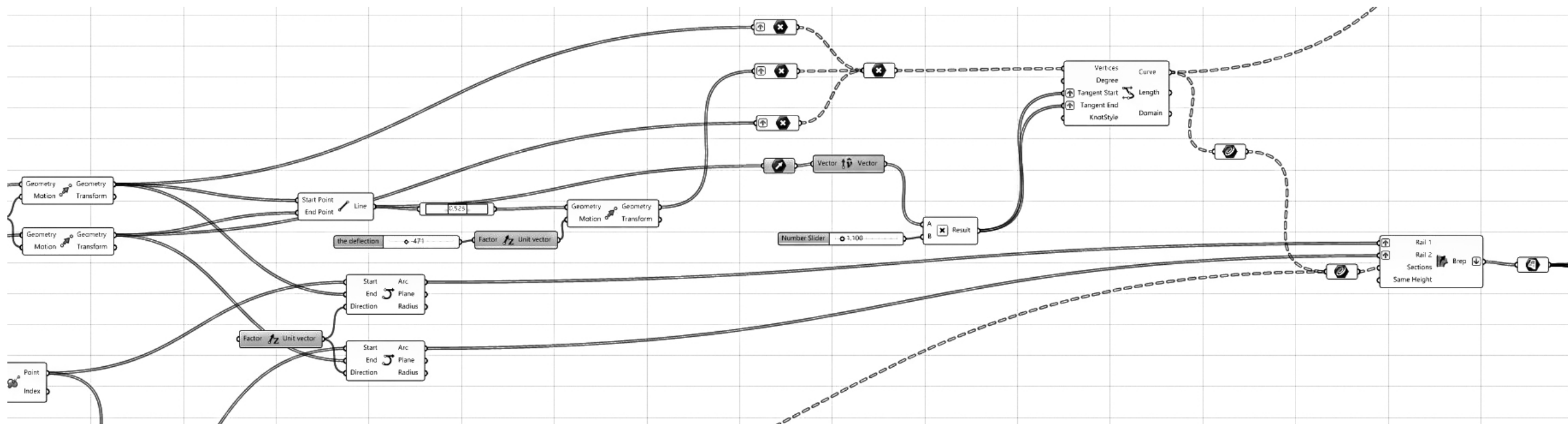
Consept

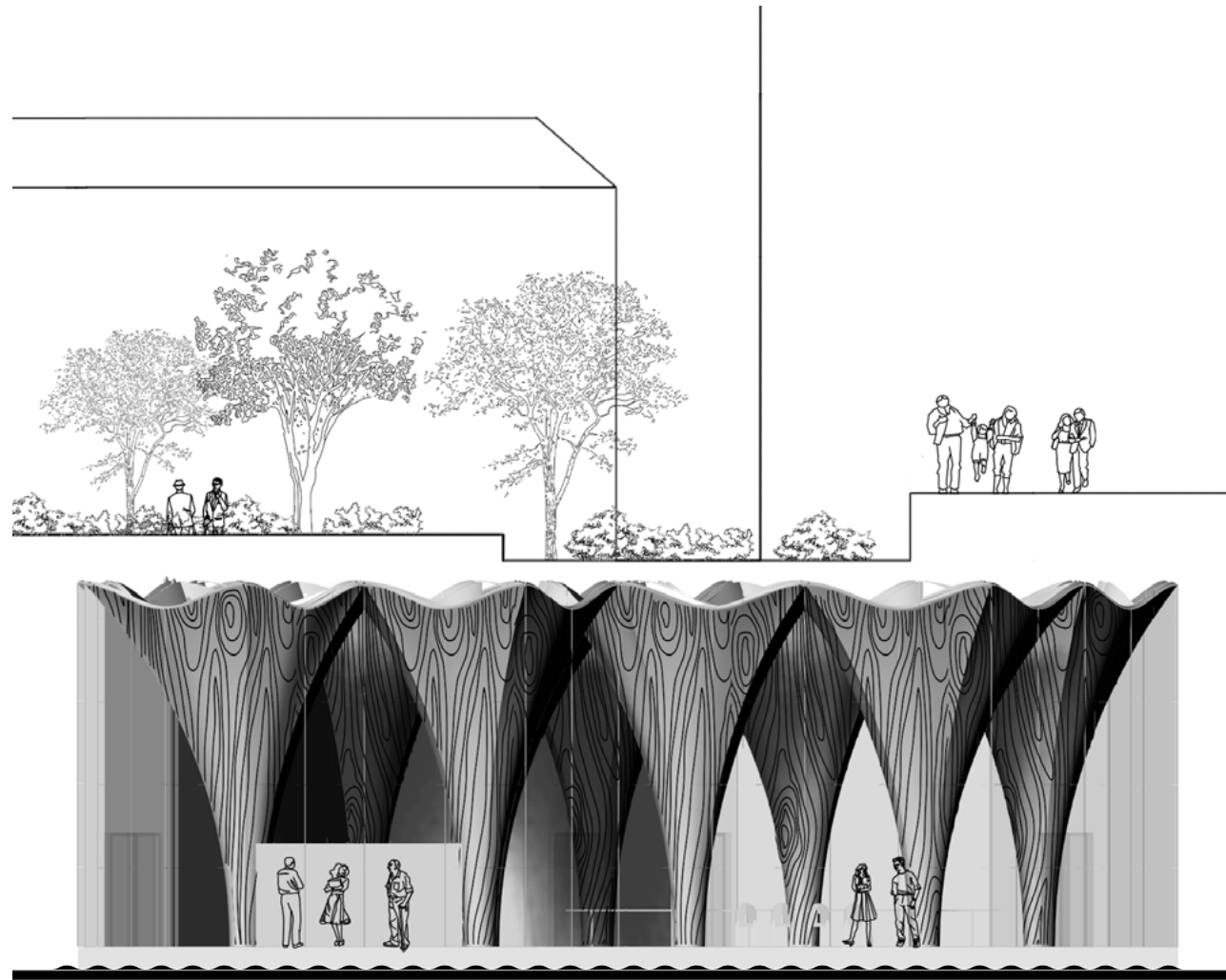


The projection of moduls plane

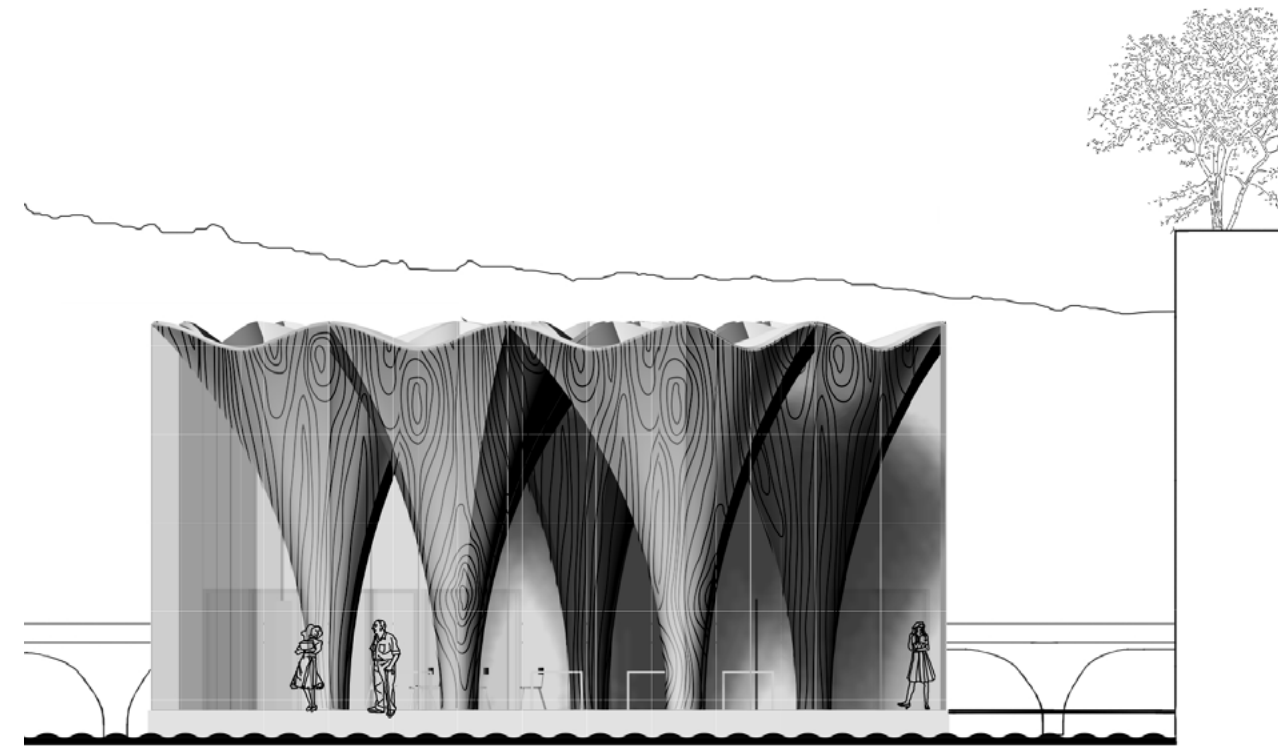


The moduls skeleton

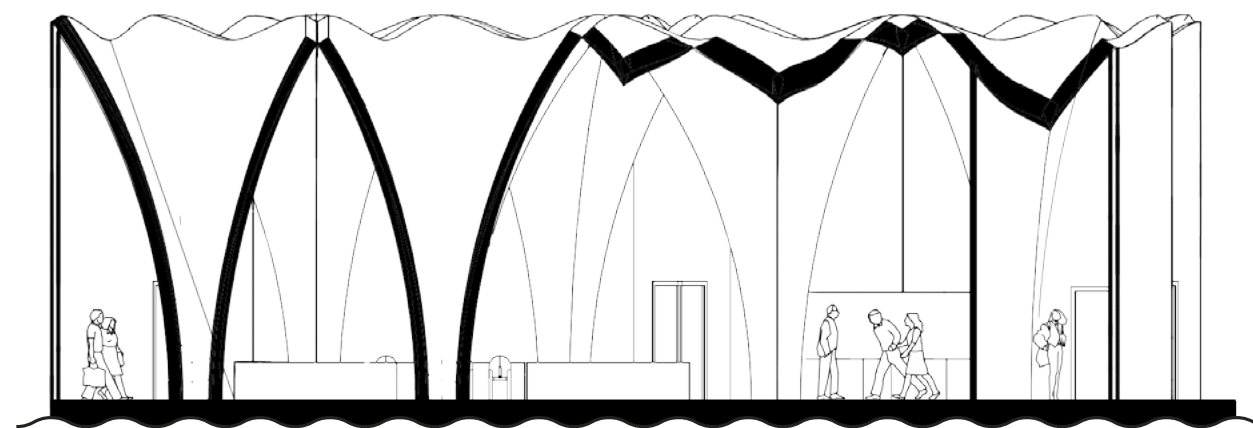




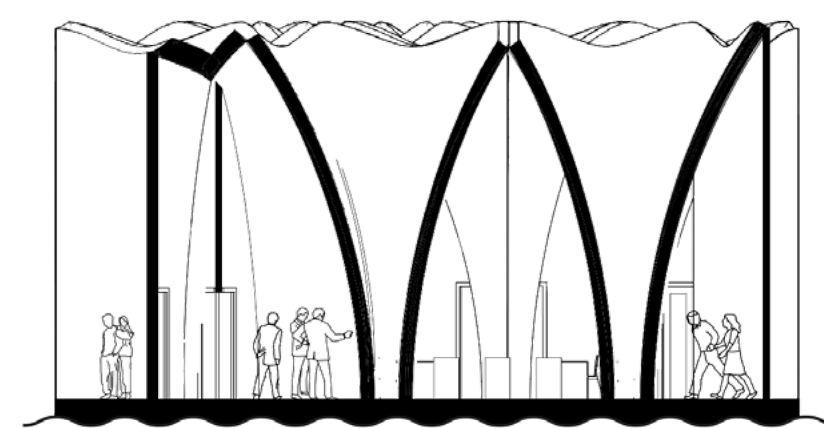
East facade



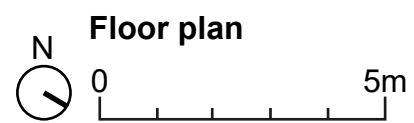
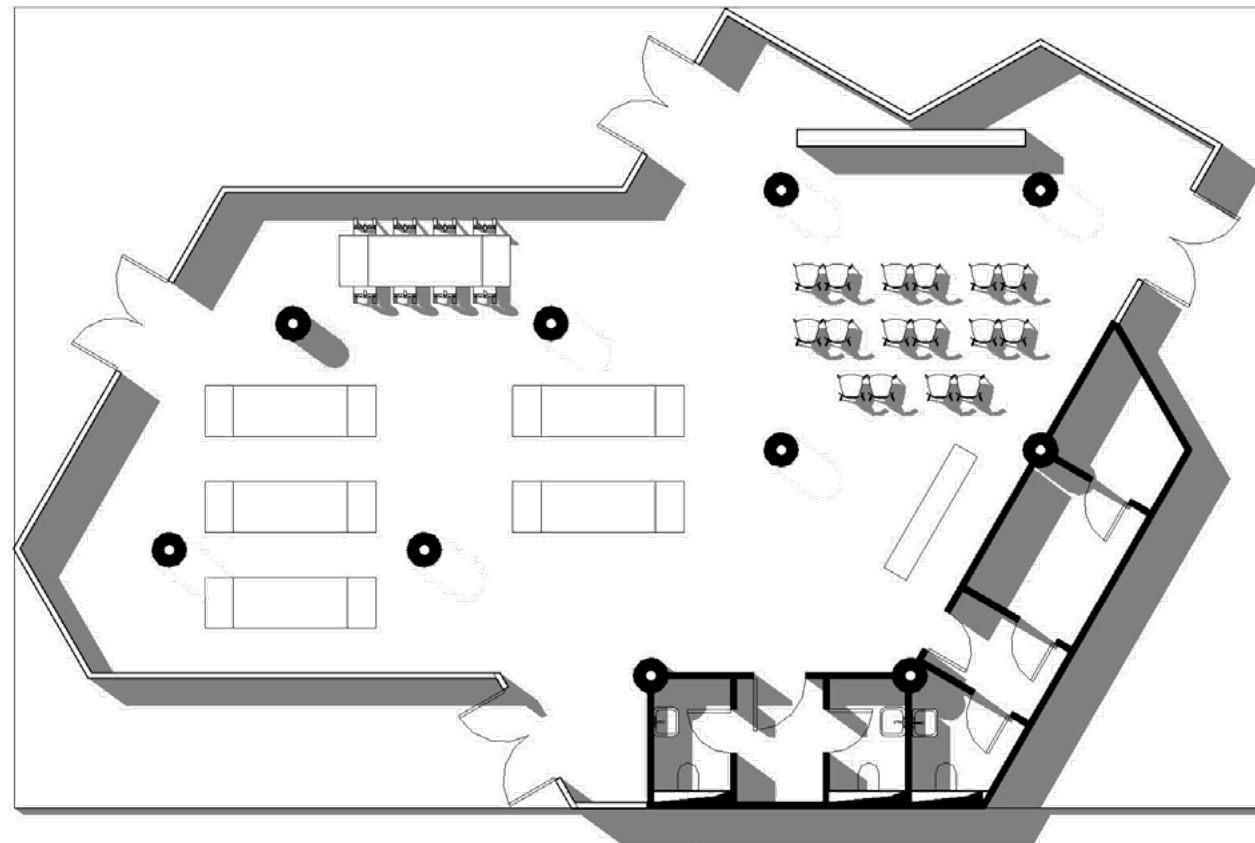
North facade



Section long - West by East

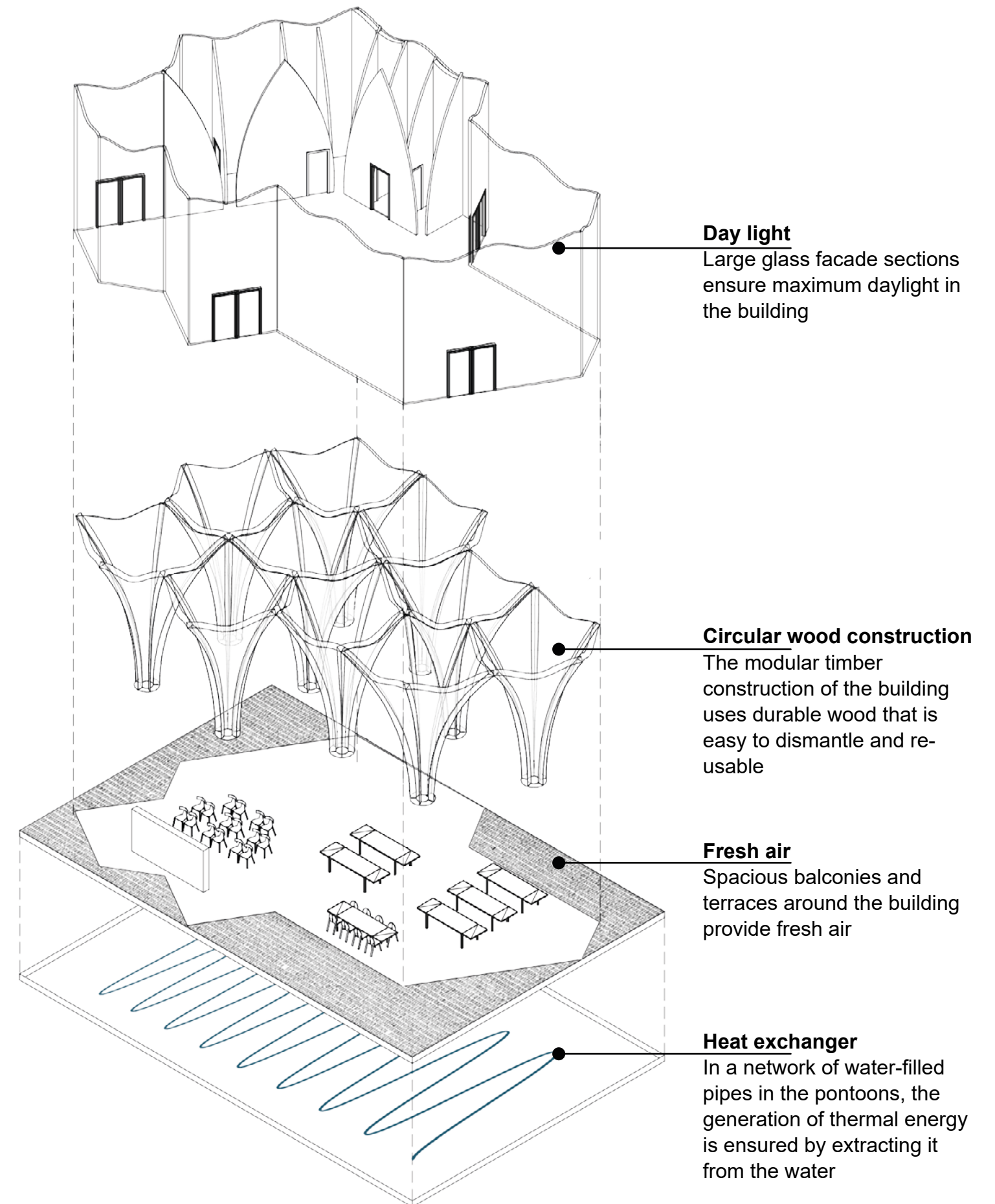


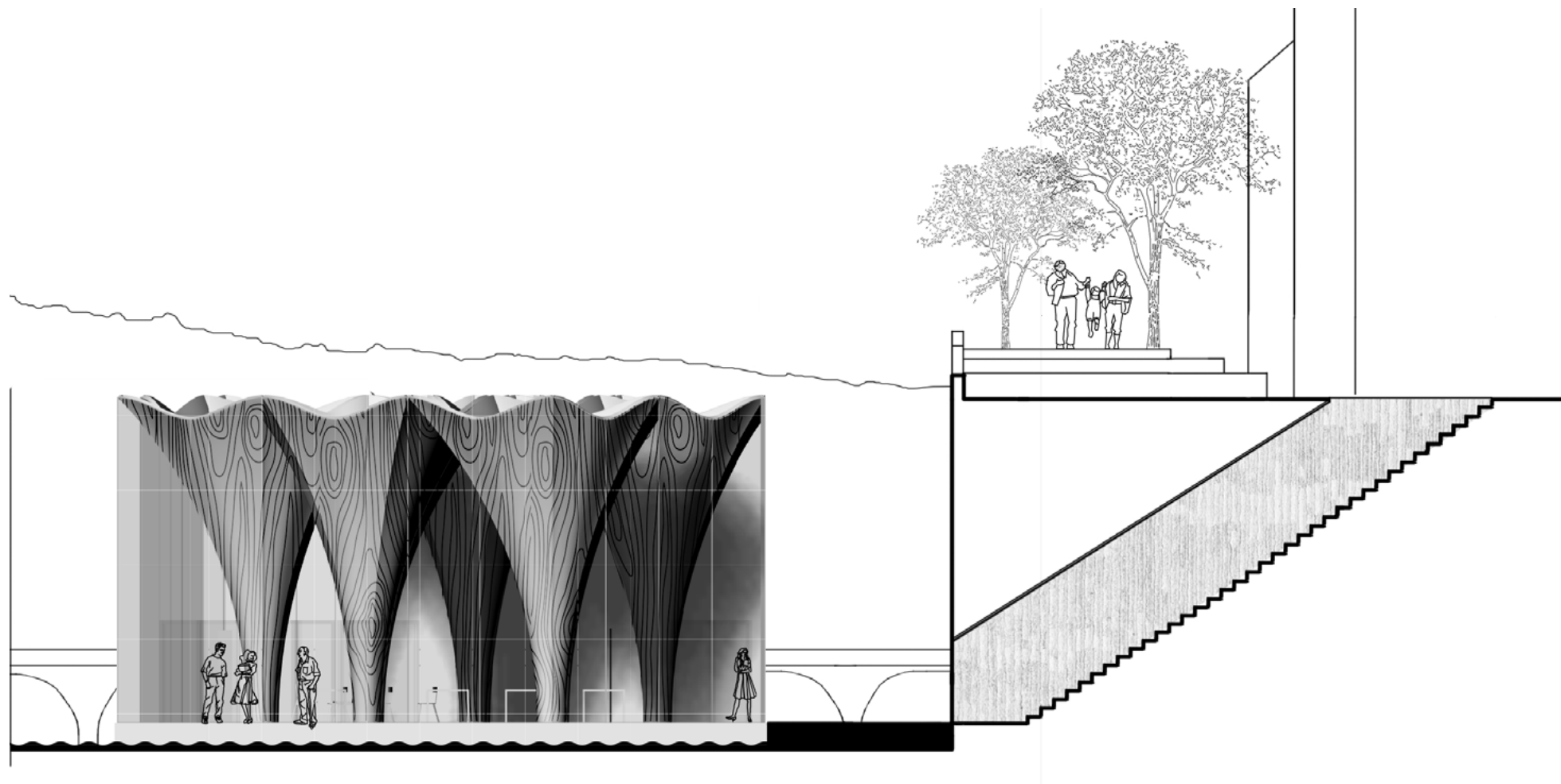
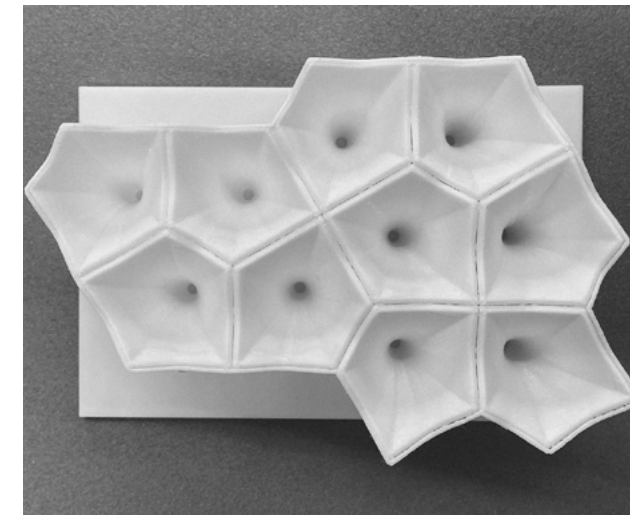
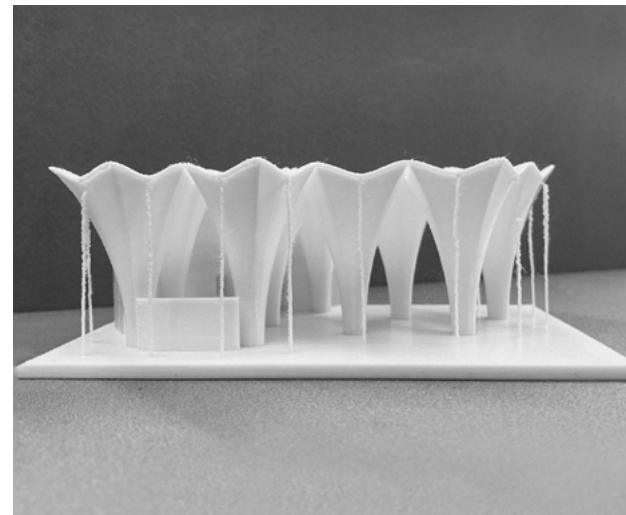
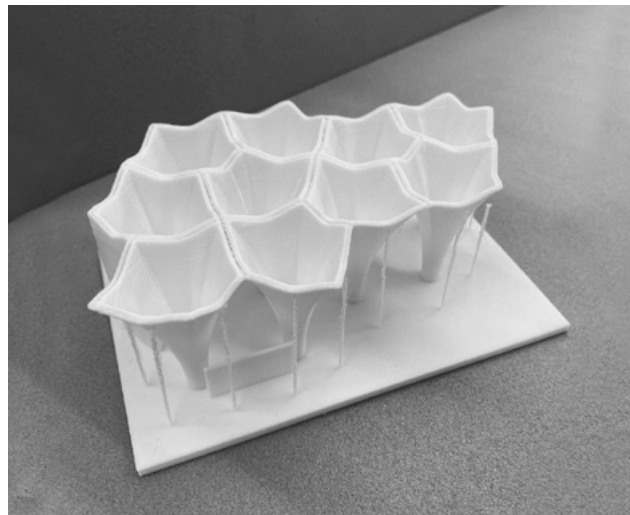
Section cross - South by North



Explication

1. Store
2. Training
3. Genius Bar
4. Support and repair
5. Vizitor toilet
6. Storage
7. Staff toilet
8. Closet
9. Terrace





Selection along the street

