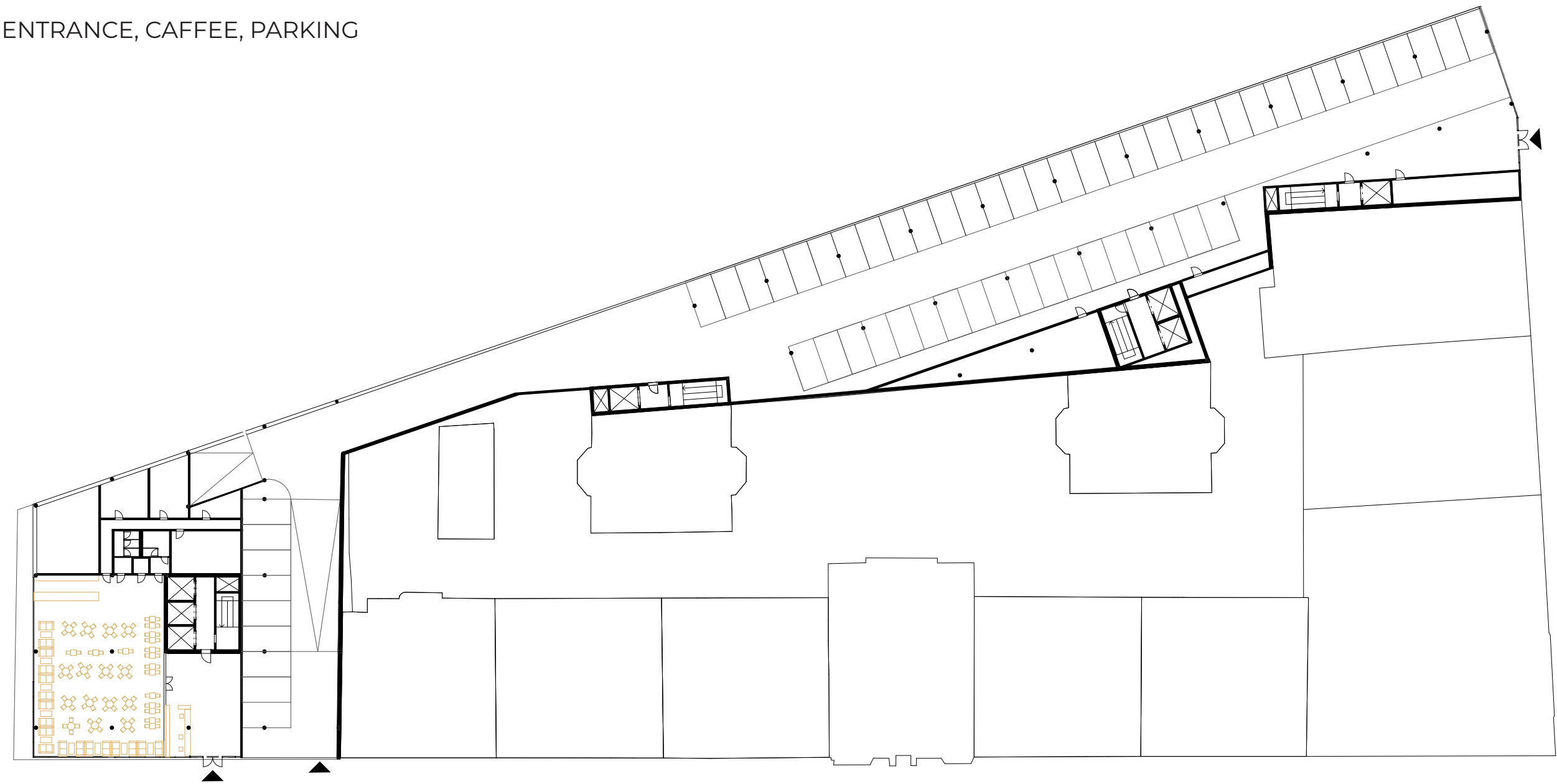
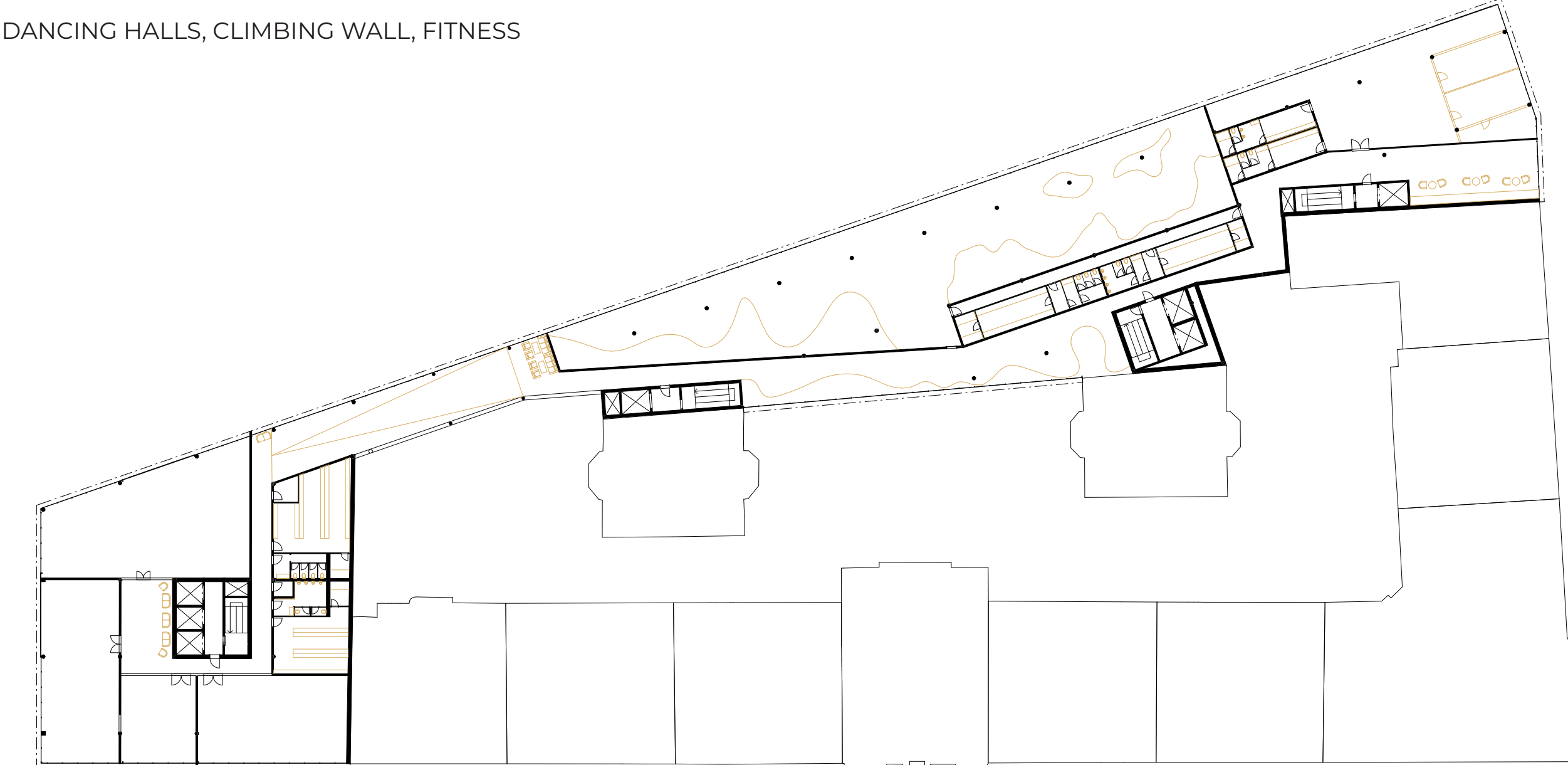


THIS PROJECT AIMS TO CREATE A HYBRID BLOCK. I USED ALL THE POSSIBLE SPACE THAT THE SITE OFFERS AND COMPLETED A CITY BLOCK WITH ONE BUILDING. THE GOAL WAS TO CREATE A PLEASANT SPACE FOR PEOPLE AND THEIR FREETIME ACTIVITIES. THE BUILDING IS CREATED FROM TWO VOLUMES WHICH ARE ONE OVER ANOTHER. THE LOWER ONE CONSISTS OF MAINLY PUBLIC FUNCTIONS. THERE ARE TWO FLOORS FOR PARKING. ALSO CAFE ON THE GROUND FLOOR AND THE SPORTS CENTER ON THE SECOND FLOOR. THERE ARE FOUR DANCING HALLS, A CLIMBING WALL, AND A FITNESS. ON THE ROOFTOP OF THIS PART, THERE IS A GARDEN WITH A PLAYGROUND, GREENERY, AND A SUMMER THEATER. THE GARDEN PLANE IS WAVY SO THAT IT CREATES A SIGNIFICANT LINE ON THE FACADE. ABOVE MENTIONED GARDEN, THERE IS A „FLOATING“ SECOND VOLUME. THIS ONE MOSTLY CONSISTS OF FLATS. BUT THERE ARE ALSO SHARED SPACES AND DOUBLE-STOREY WELLNESS. A FACADE IS DESIGNED FROM CURVED PERFORATED METAL SHEET PANELS. THIS ALLOWS SUNLIGHT IN THE INTERIOR BUT NOT TOO MUCH OF IT, AND MAKES THE BUILDING LOOK LIGHTER AS WELL.

GROUND FLOOR M 1:500
ENTRANCE, CAFFEE, PARKING



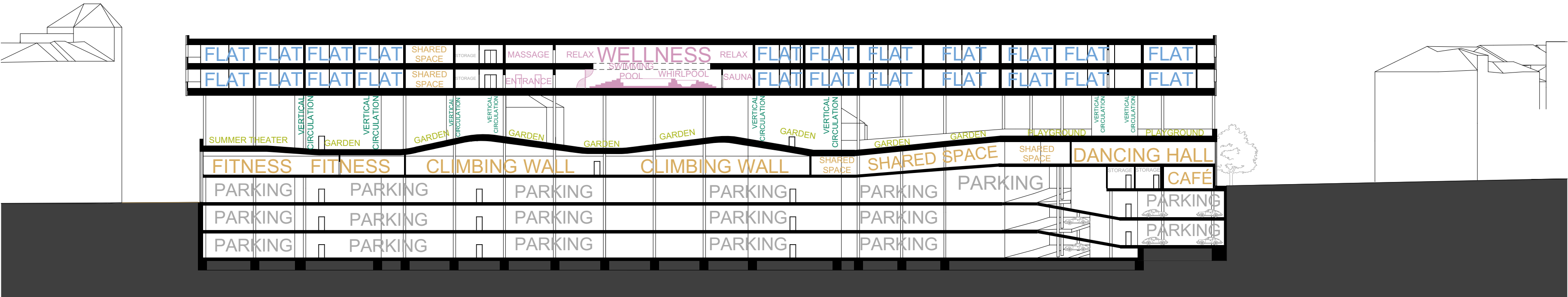
2ND FLOOR M 1:500
DANCING HALLS, CLIMBING WALL, FITNESS



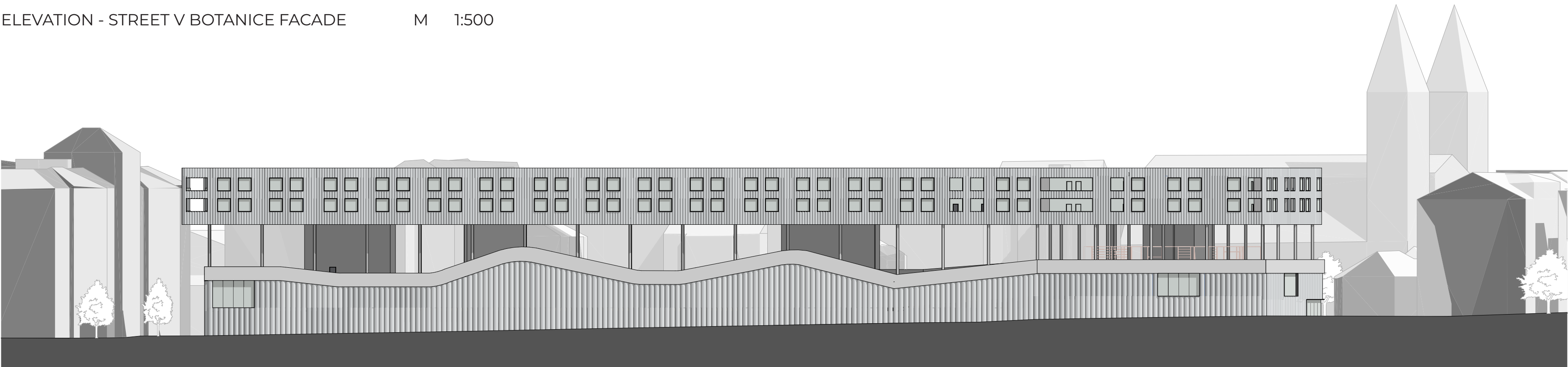
4TH AND 5TH FLOOR M 1:500
FLATS AND WELLNESS



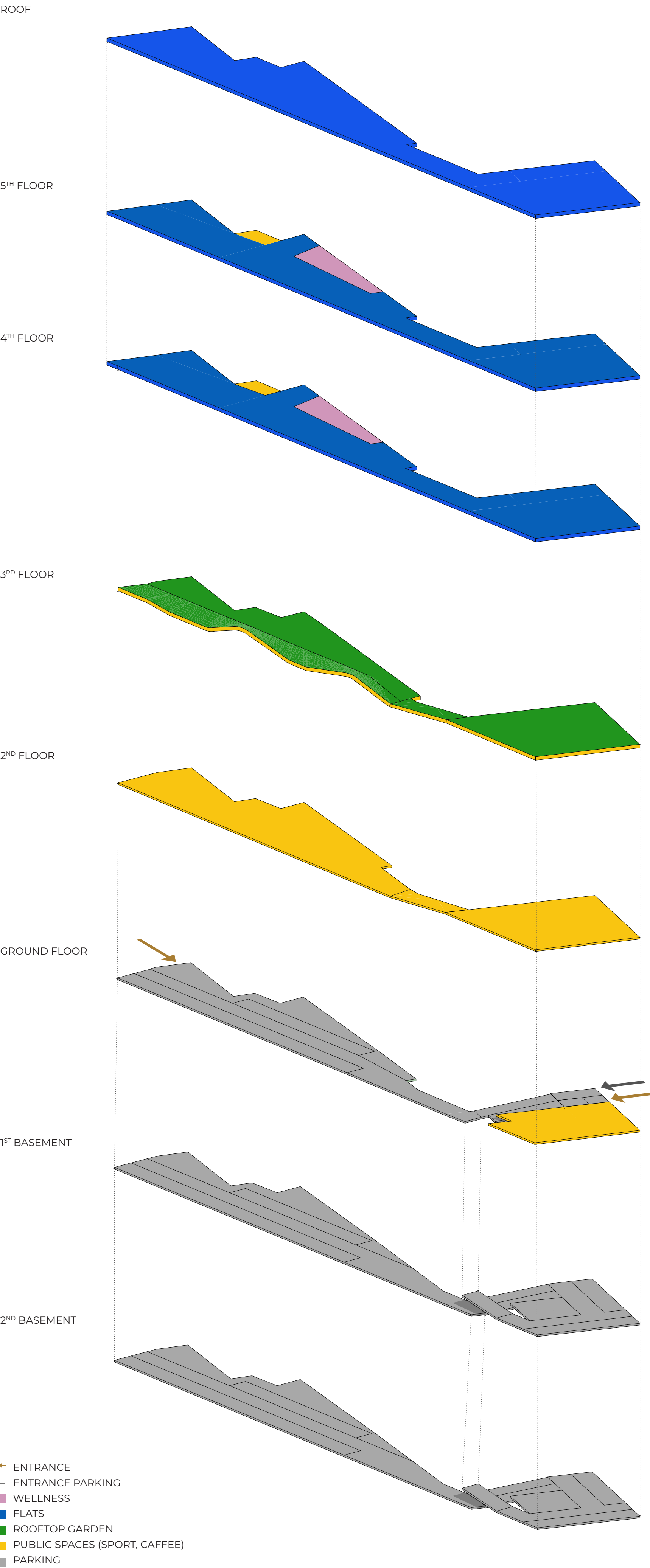
LONGITUDINAL SECTION M 1:500



ELEVATION - STREET V BOTANICE FACADE M 1:500



HYBRID BLOCK - SMÍCHOV



CROSS SECTION M 1:500

