

CIIRC atrium

study

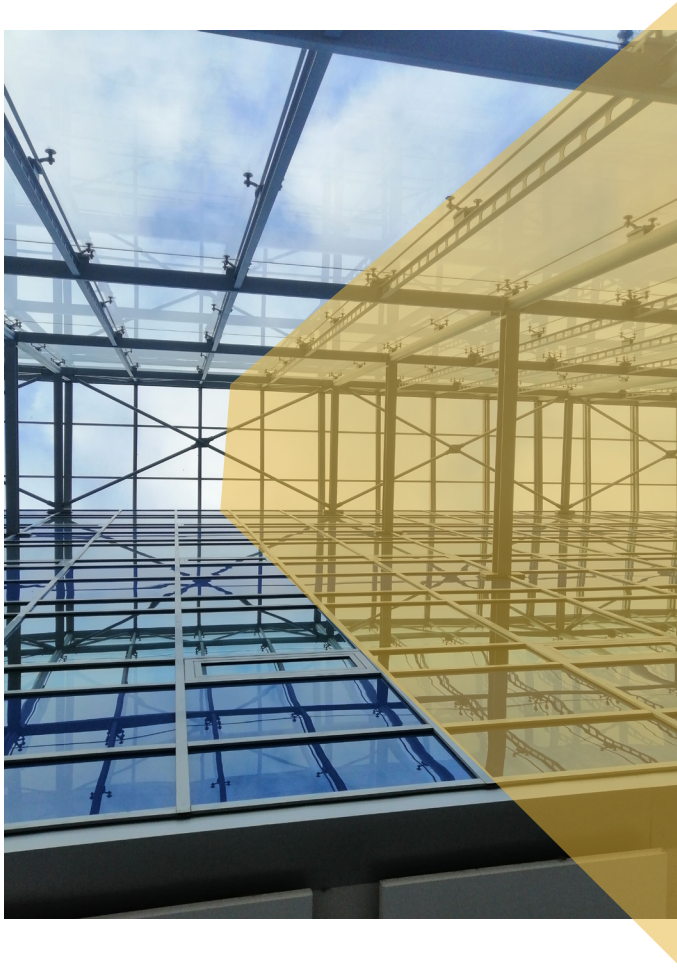
FA ČVUT 2021/22
Prague

authors: Elitsa Rabina, Peter Balint Szabo, Bc. Jonaš Klvaň, Jure Jevšenak, Gregor Jošt
mentors: Ing. arch. Lukáš Kurilla, Ph.D., Ing. arch. Simon Prokop

Situation at the moment



unused big empty spaces



high unused space, with big potencial

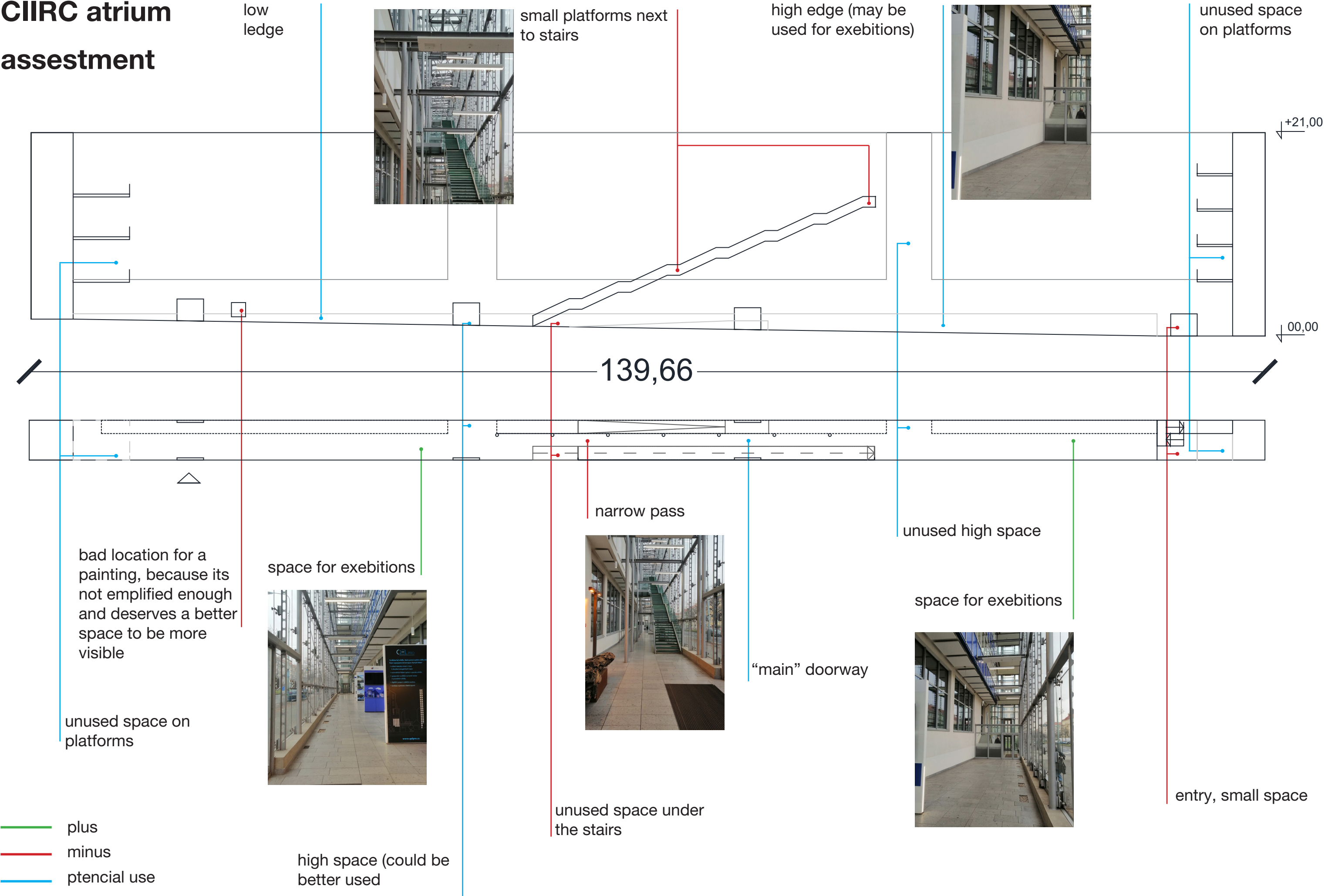


potencial use for exeibition space



connection between floor and high space above it

CIIRC atrium assestment



Closer to nature_closer together

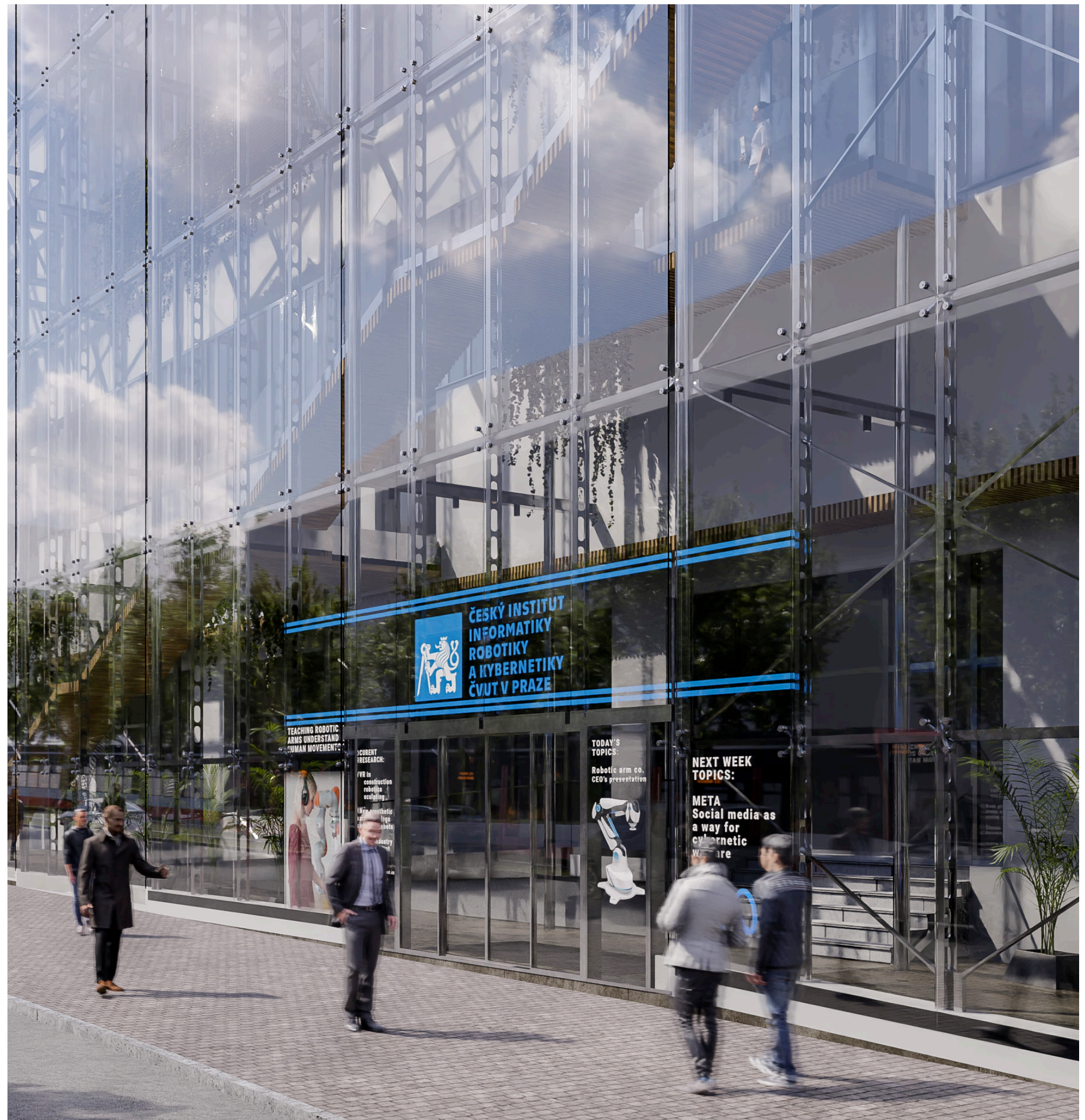
Main entrance has been overlooked for a very long time, so I shine a light on it. Because we're dealing with important technical building, the entrance should immediately show its technical re-search and capabilities.

This led to an idea, using see-through monitors/ displays, which provide opportunity to show to people passing by, what's going on at CIIRC right now, what lectures are on right now, what interesting topics they discuss or what research is done.

There can be also a video, teaser and information about important events, not only CIIRC's events, but also CTU's events etc.



author: Bc. Jonas Klvaň

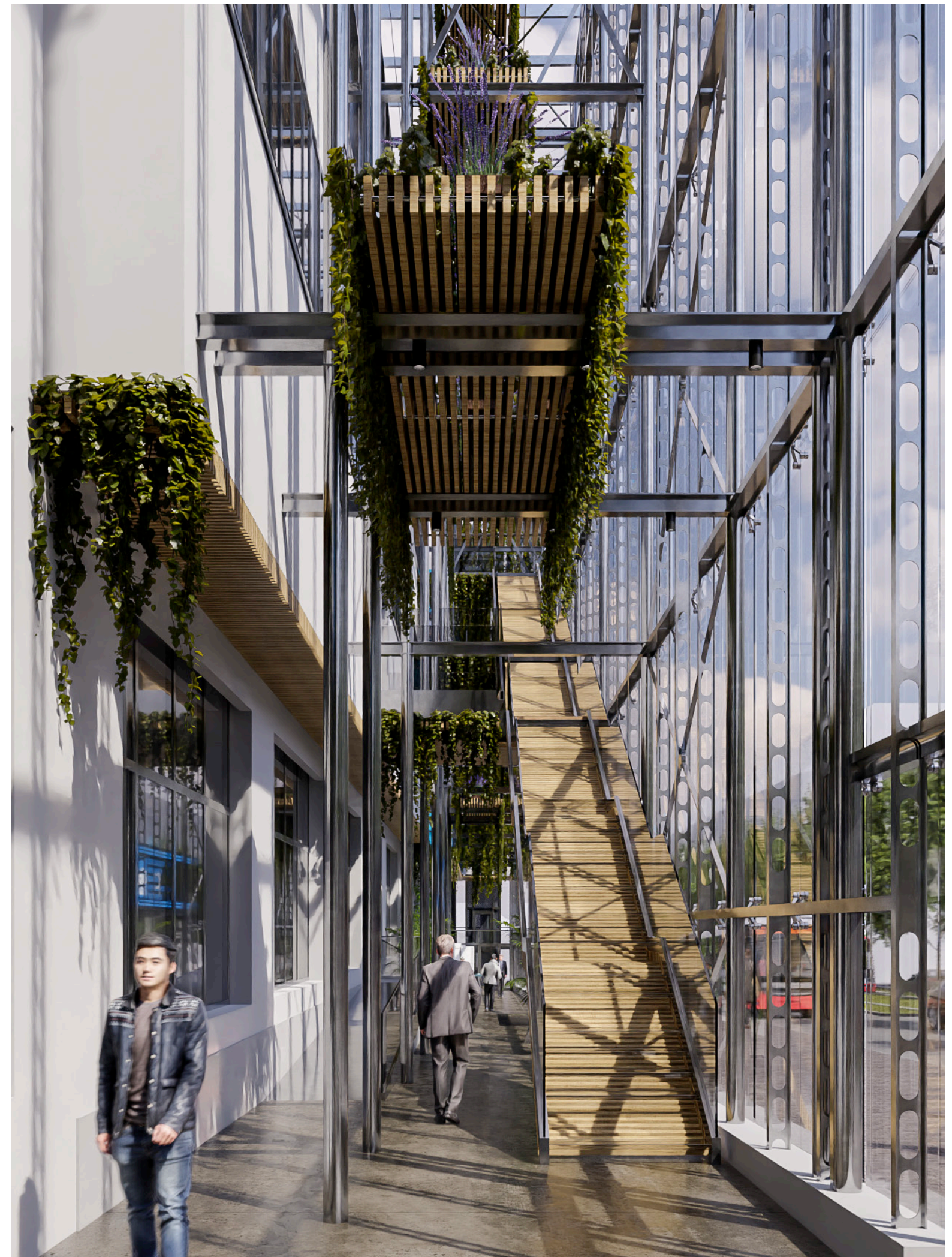


Closer to nature_closer together



Interior of atrium, taking in consideration its importance, is too cold and unwelcoming. This led to change of all the design it now exists in the atrium. From floor proposal and change of exhibition design, over soffit for staircase and other structures to greenery and seating providing comfy place to everyone who has some time and wants to relax for a while.

You can sit at the exhibition part of atrium, taking a stool by one of the poster walls, overlooking the everchanging green walls above you and studying interesting ideals presented at the exhibition.



Closer to nature_closer together



Green flower bridges provide important natural touch for the whole space and divide the ultimate height into more testable sectors. It also brings more grounded feeling for those in lecture halls, offices etc.

In upper part of atrium are seats hanging from the ceiling, providing calm and comfortable place for taking coffee with colleagues and discussing work while overlooking laboratories with robots behind windows. All the elements, from wood to stones, bring nature closer to us than ever possible on CIIRC.

No more dizzy feeling while taking the staircase, no more cold and unfriendly walkthroughs and just better and inviting place to go through and maybe... maybe ... stay a while and enjoy a day.



Idea_making it friendlier



With addition of some swings to hang out the atrium could be much more friendlier. It could be used as a place to hang out, to wait for friends.

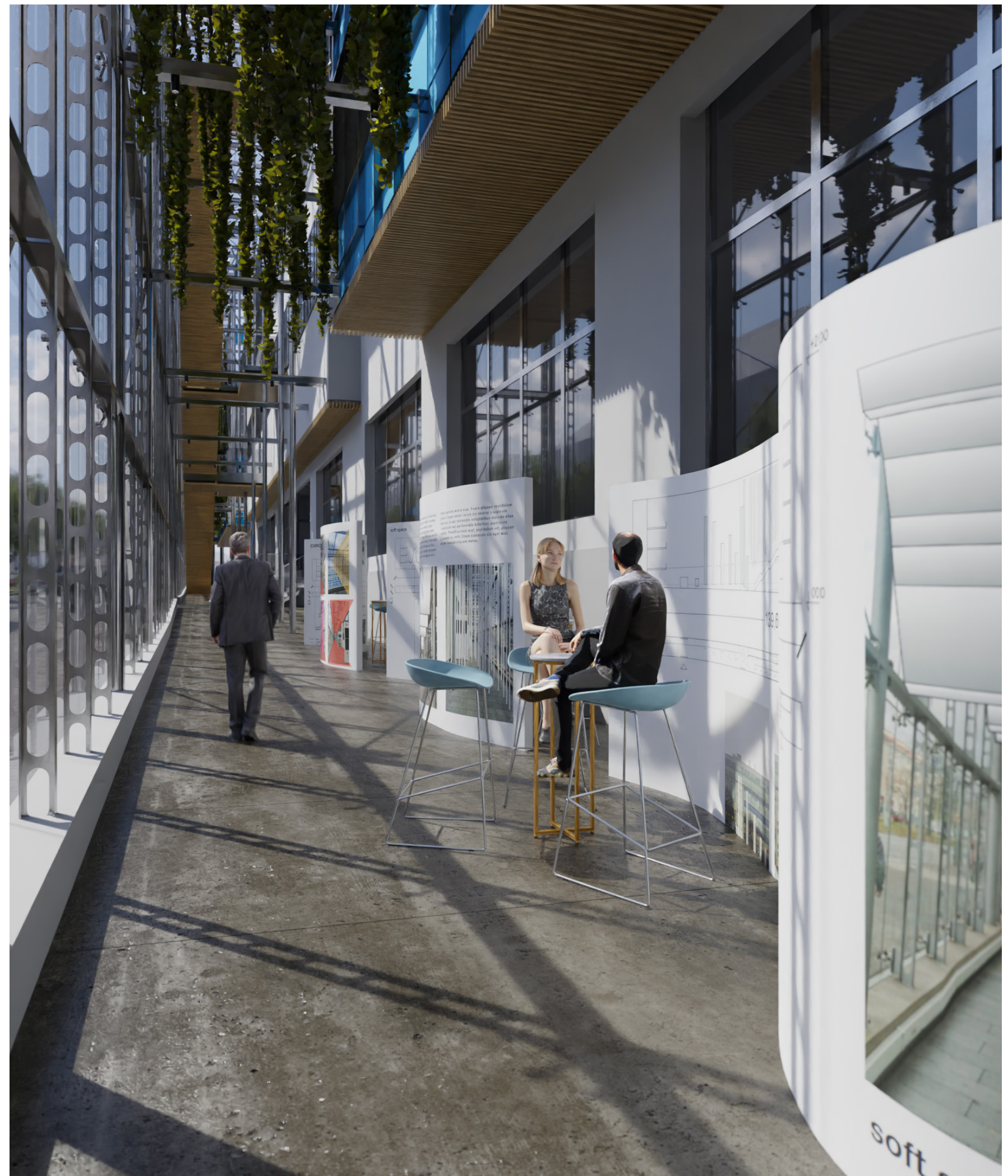
Also with an instalation of some seating equipment corridor beomes more playful. A place where people can wait for eachother or meet in peace.



Idea_making it friendlier



If we insert a vertical wave in to the space, atrium could be more dynamic and at the same time allowing people to move behind the shape and enjoy the exhibition in peace.



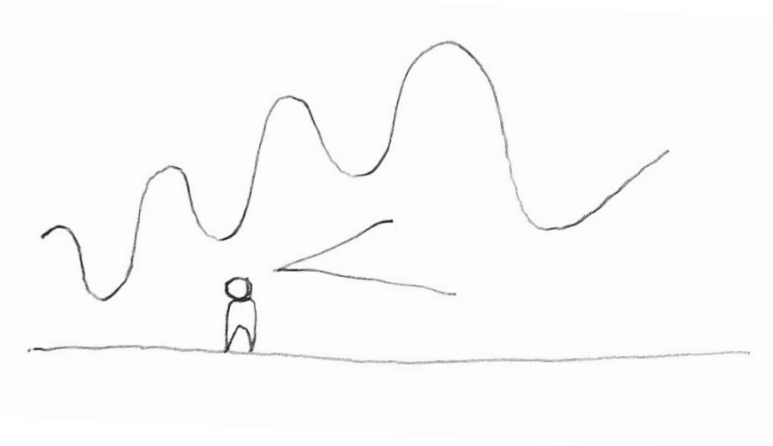
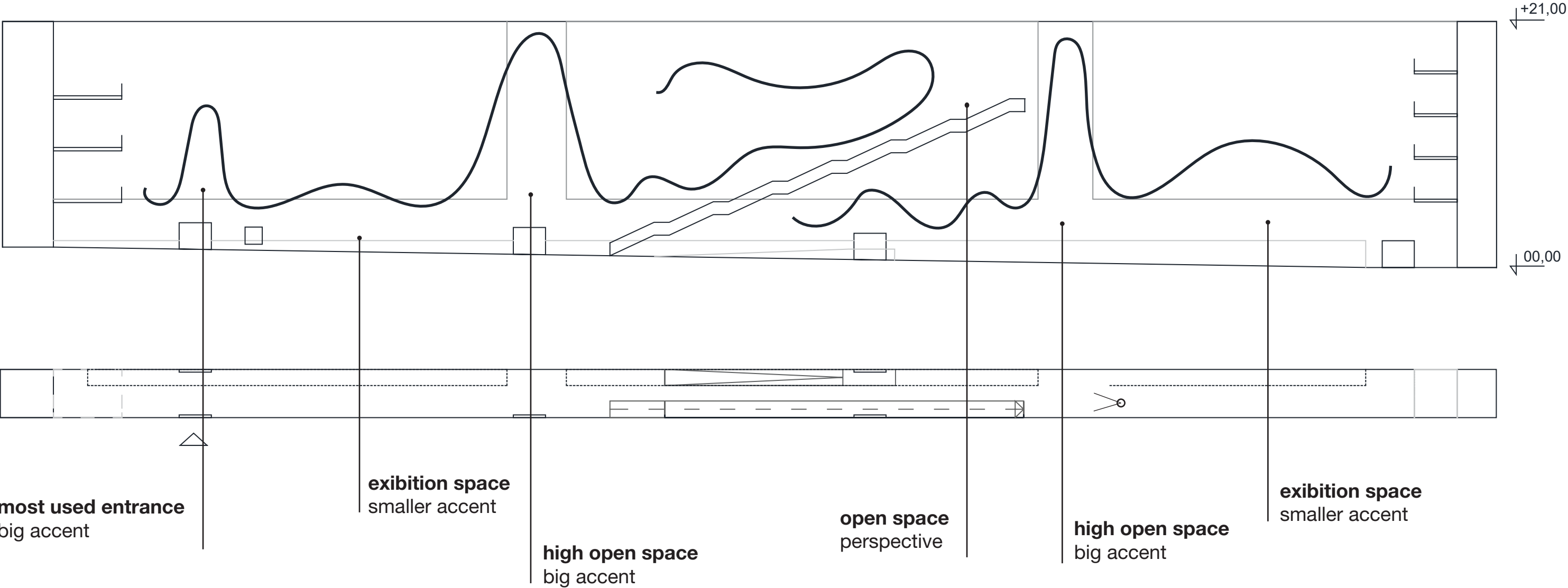
Idea_vivid space



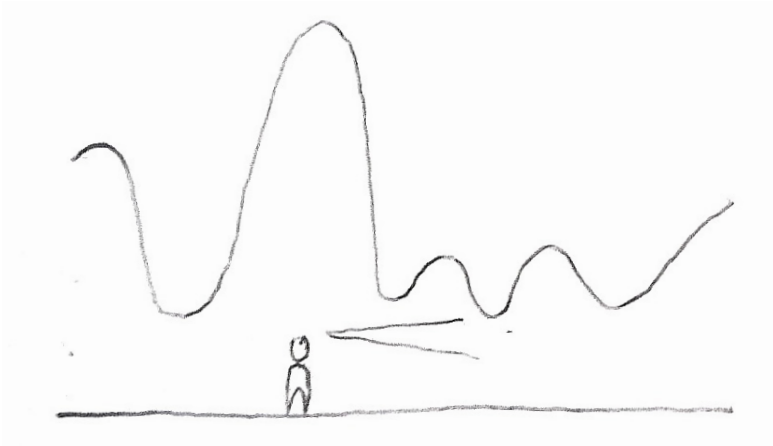
Atrium could be used as a lighting instrument. With walking on colorful tiles, passers by would play with lights, which would turn on or off when they step on the tile.



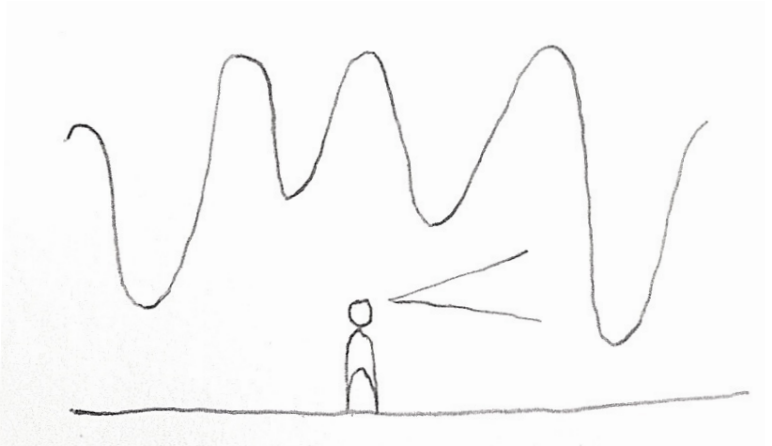
Idea_soft space



escalation



emphasis



surrounded

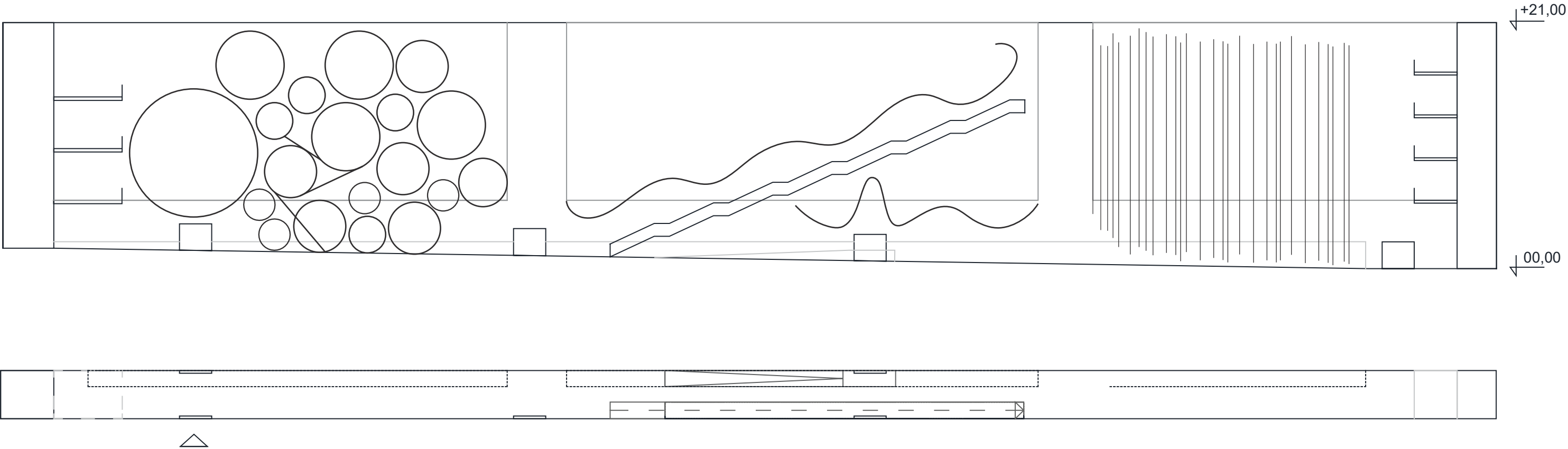
Idea_soft space



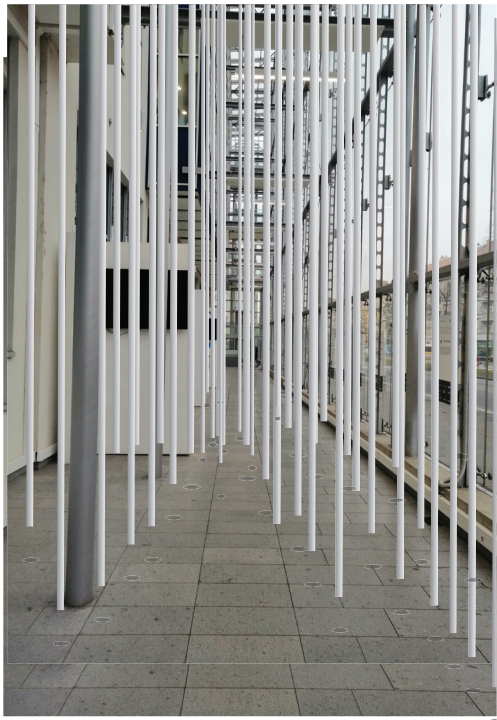
With a soft shape, we improve acoustics in the atrium. The shape is a continuous wave, which connects the place.



Idea_3 sectors

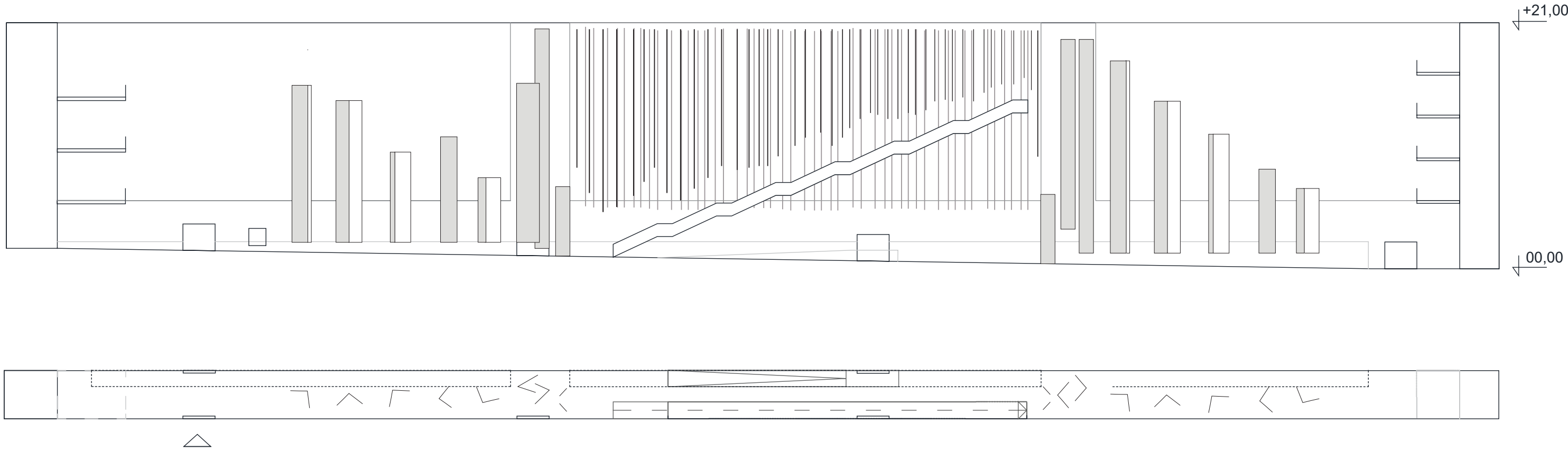


Waves in the air.



White forest.

Idea_closer to the exeption



Exebition space

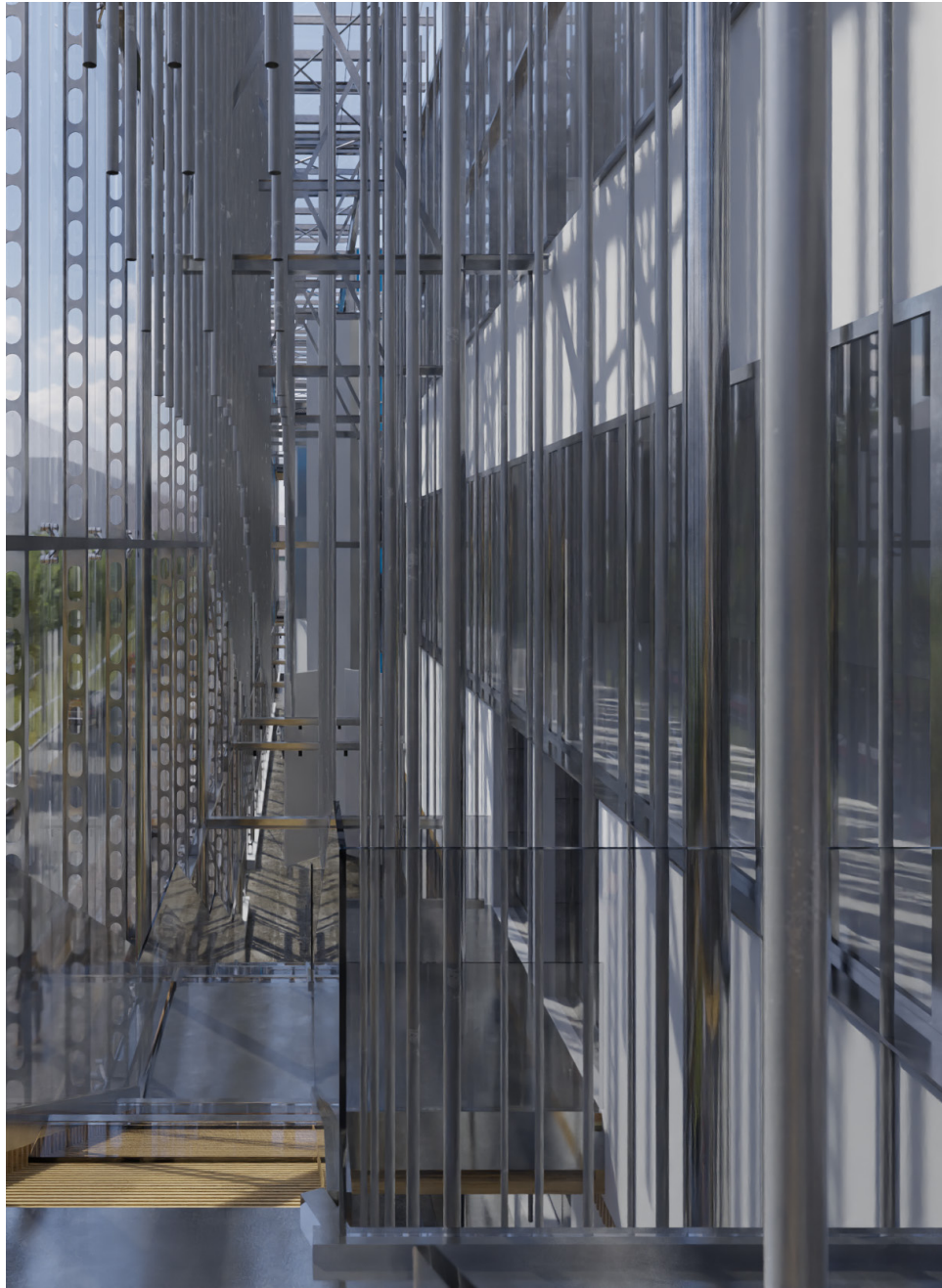


Gradation.

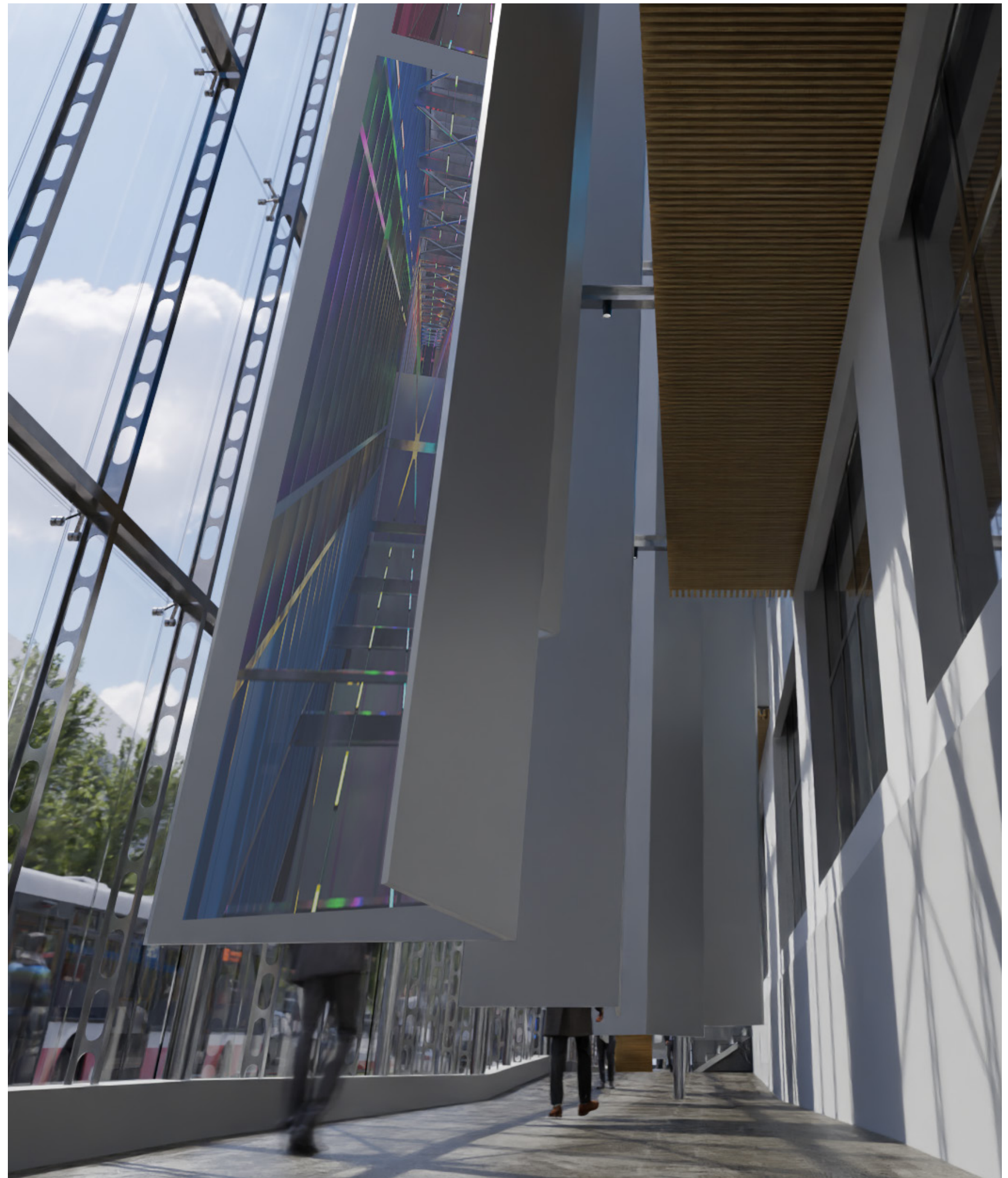


Exebition space.

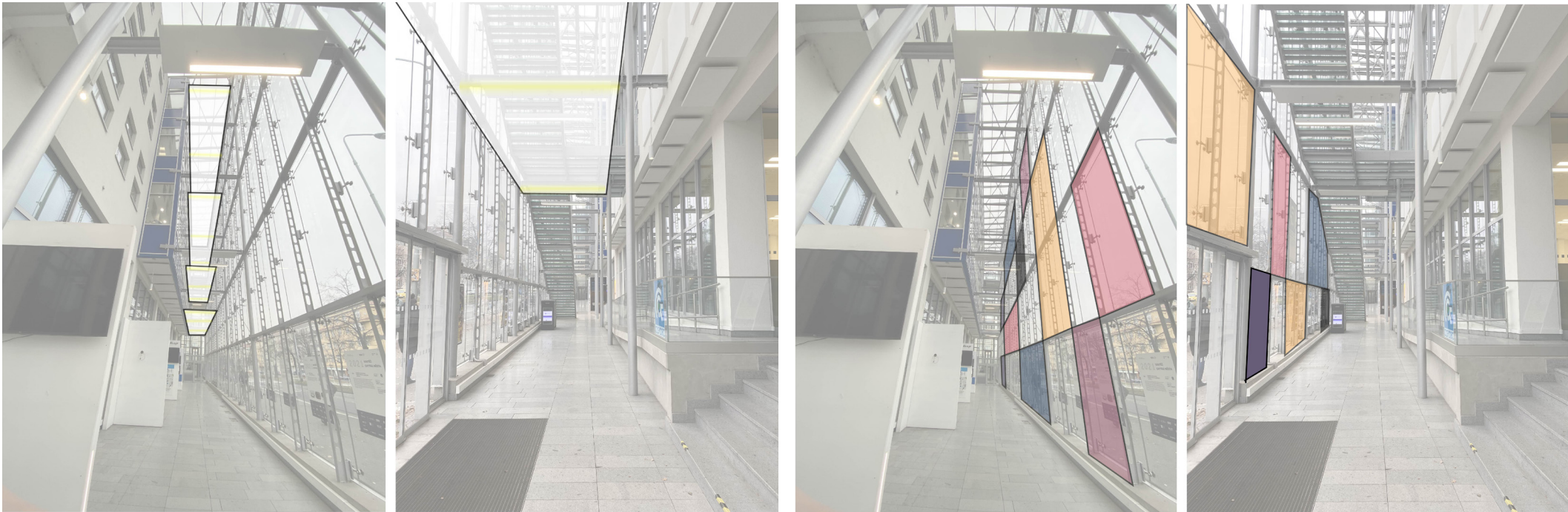
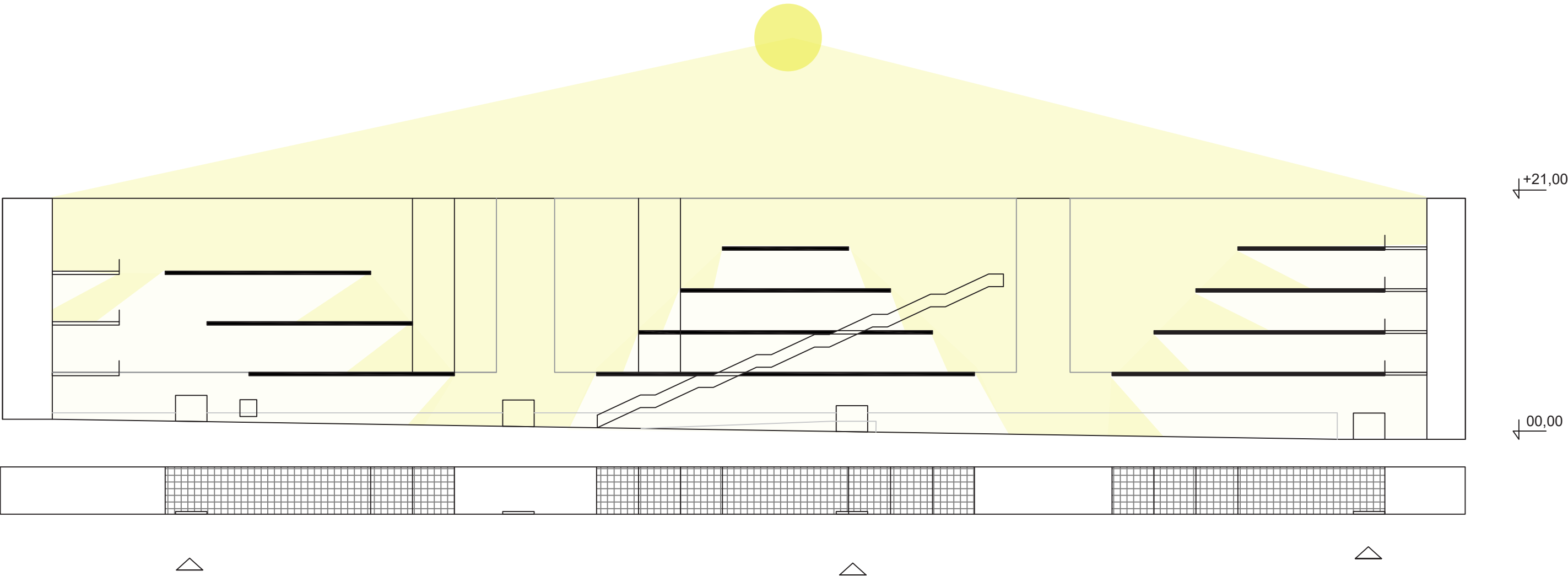
Idea_closer to the exeption



With adding elements like tubes and triangles in to the atrium, the space gets more dense. There is less visual connection between the whole space and a passer by. All that is left are directed views to experience the place.

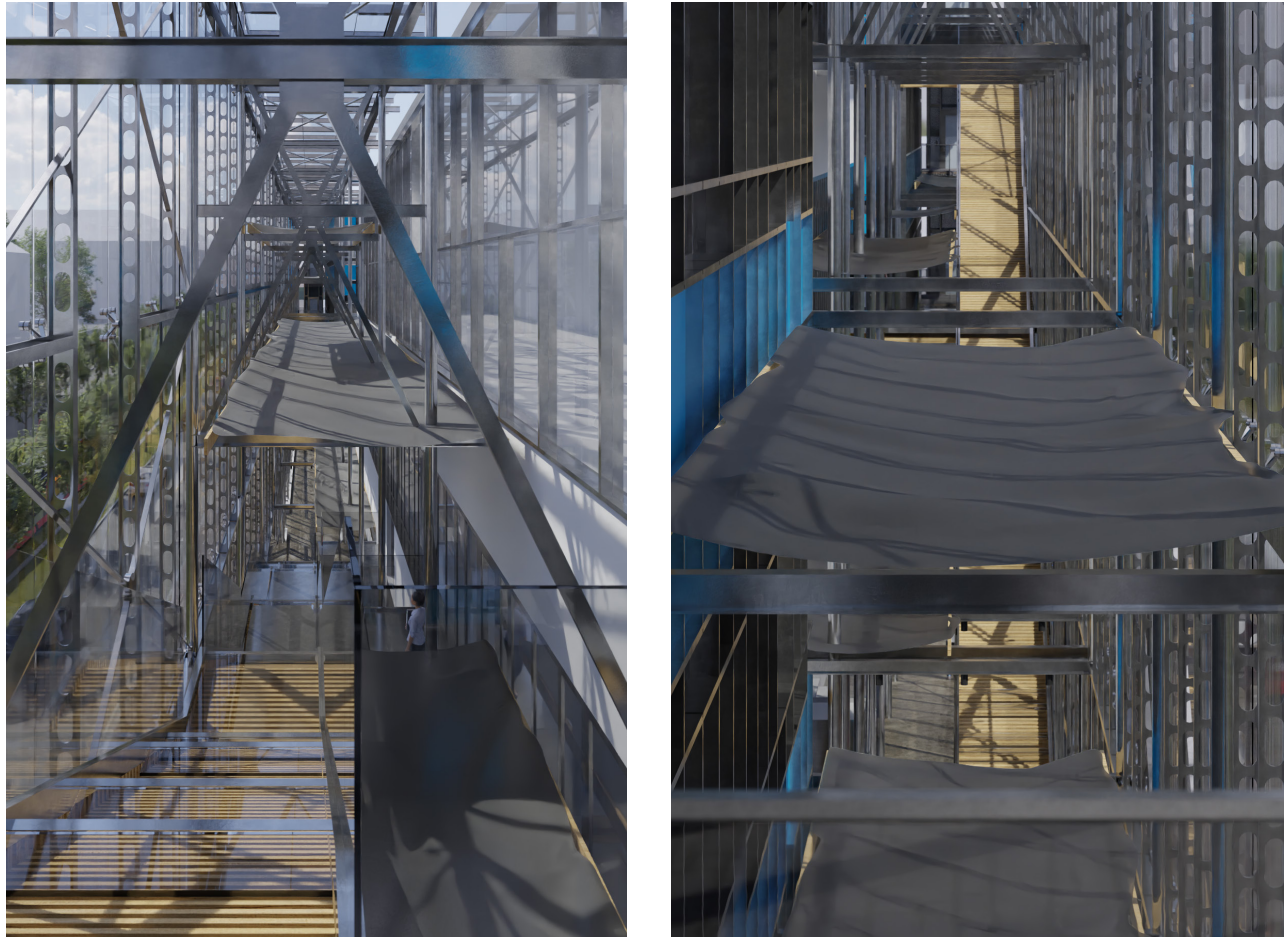


Idea_ceiling for glass atrium



Installation of horizontal/vertical linen panels with a wooden frame.

Idea_ceiling for glass atrium

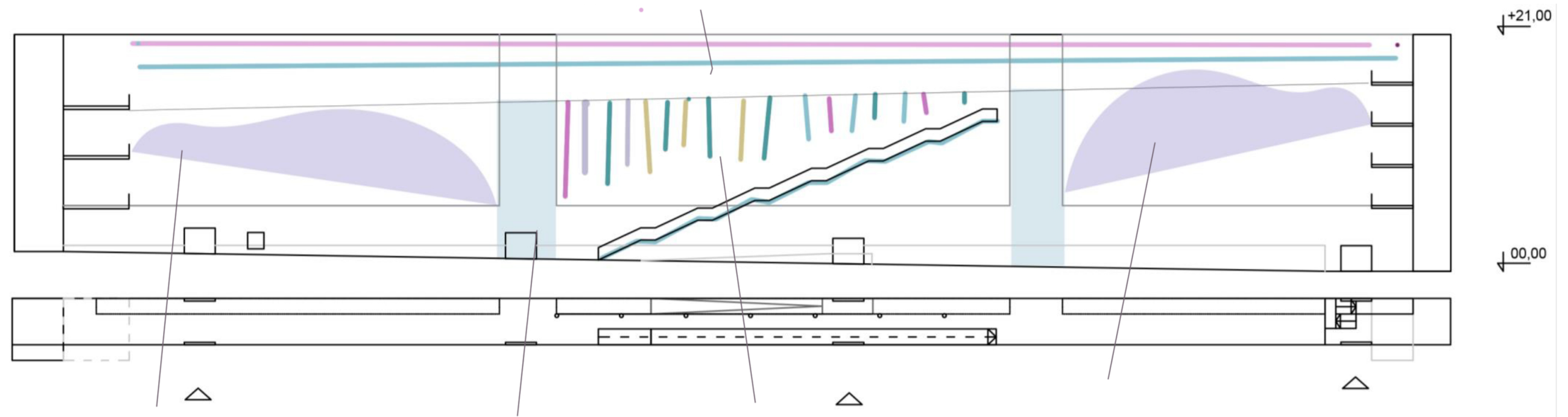


Installation of horizontal/vertical linen panels with a wooden frame on an already existing structure, thus obtaining different room heights, which enable several ways of perceiving space. Because the current lights are very bright, they dazzle you if you look in it. Therefore, I would install the panels so that they “peel off” the lights and consequently emit a more gentle light that shines through the linen fabric. I think that with different heights and light we could get rooms of different characteristics.



Idea_colorful interior

Upper part is a big horizontal space.



Sector one-hanging fabric structure, so it can keep warm in winter and cold in summer and makes the facade more playful.

the highest points are fully covered with fabric so they create a tunnel, which could be a place for exhibitions.

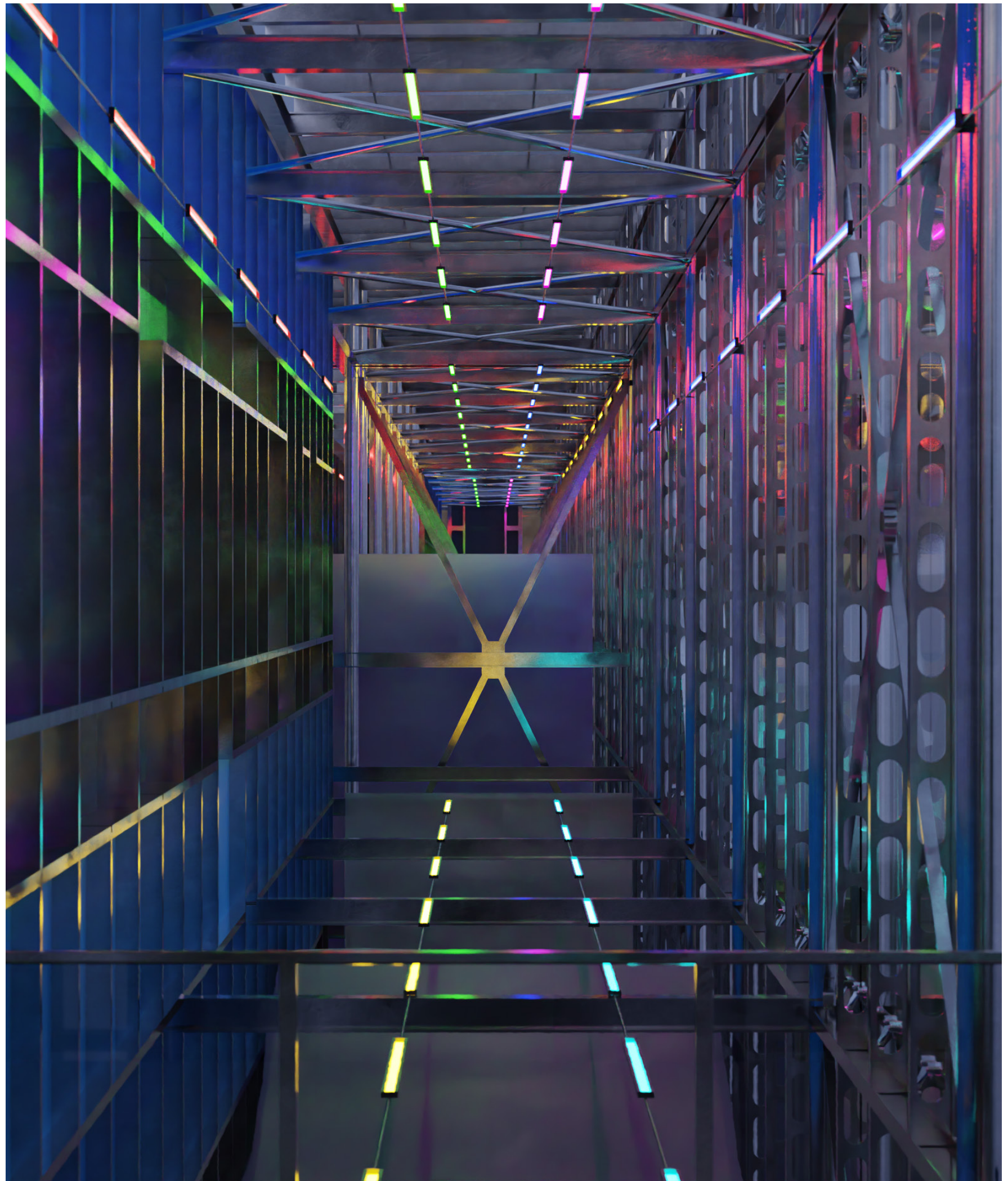
The middle part contains many hanging vertical elements which are making the space warmer and closed.

Sector three is the same as sector one, so it is symmetric and leads to the middle.

Idea_colorful interior



Upper part contains horizontal lights, which are imitating the sound of the passing vehicles and with that creating an active facade.



Idea_colorful interior



The middle space containing the stairs will be changed by the addition of colourful panels hanging from the ceiling.

In this way the space is minimalised and the feeling by walking on the stairs is warmer and closer and you don't think that you will fall down.



Idea_chill place

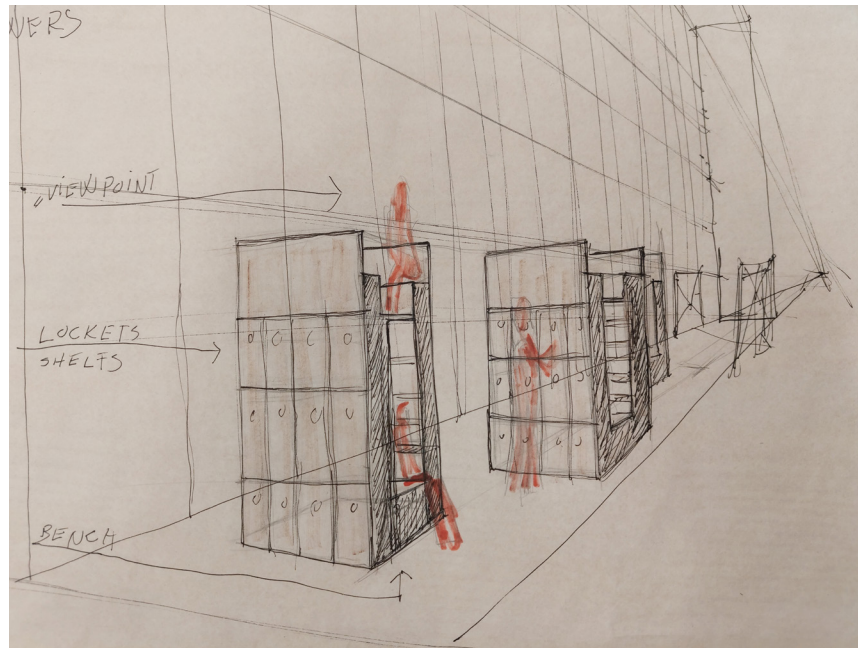
The main goal of this idea is to fill some missing functions and services around the complex.

The installations serve like seating accommodations, where students, teachers, or anybody who comes to the canteen can wait for each other, or spend the time between lessons. The Towers are point-like placed installations, where people can hide inside, and distance themselves from the incoming crowd, or can climb up, and see everything around. These element also contains lockers in one side, for books, bags, or coats, making lunch or lessons more comfortable. The other side of the Towers functions like a community based bookshelf, with public, donated items. People bring second-hand books here, read some in their free time, or take some with them.

The other half of the atrium works similarly, but with some different shaped elements. Here the mass of people passing through is not so significant, so the elements are more opened, more ventilated, but still have some playfulness, elevation differences. Bookshelves, and lockers take place here too.



Idea_chill place

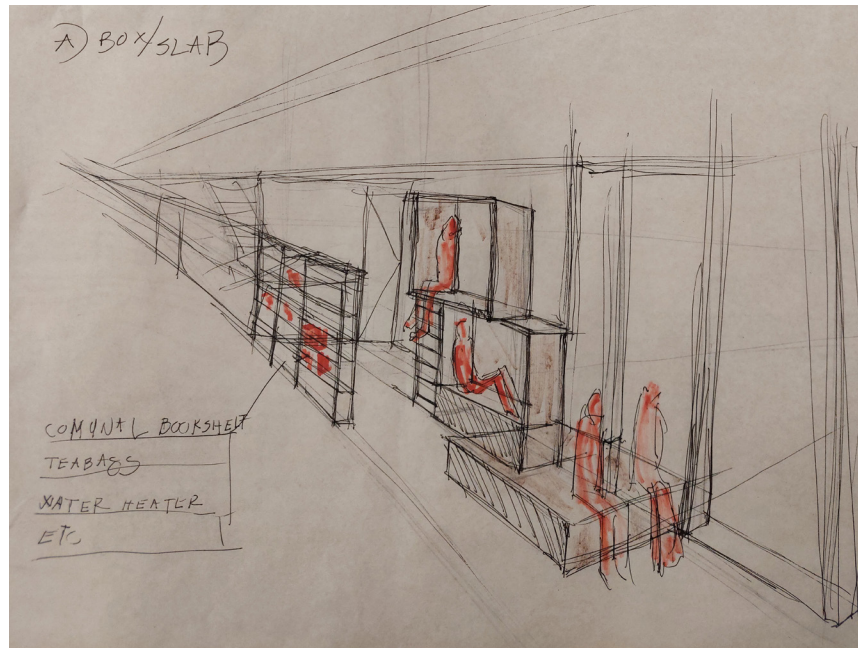


These element also contains lockers in one side, for books, bags, or coats, making lunch or lessons more comfortable. The other side of the Towers functions like a community based bookshelf, with public, donated items. People bring second-hand books here, read some in their free time, or take some with them.

The other half of the atrium works similarly, but with some different shaped elements. Here the mass of people passing through is not so significant, so the elements are more opened, more ventilated, but still have some playfulness, elevation differences. Bookshelves, and lockers take place here too.



Idea_chill place vol. 2



Sitting installations with community based bookshelves.

author: Peter Balint Szabo

