

There once was a hospital

ATU - Bulovka

Summer term 2020/21

Studio Landscape & Architecture

by

Šimon Kmet

lead by

Henry Hanson

Lukáš Vacek



There once was a hospital

There once was a hospital is a master plan project for future re-use of Bulovka site, currently serving as a hospital.

It is based on the simple idea of establishing a strong urban centre on Na Stráži square. While enabling the western part to return closer to its natural form. The goal is synchronisation of natural ecosystems and human activity in a symbiotic relationship.

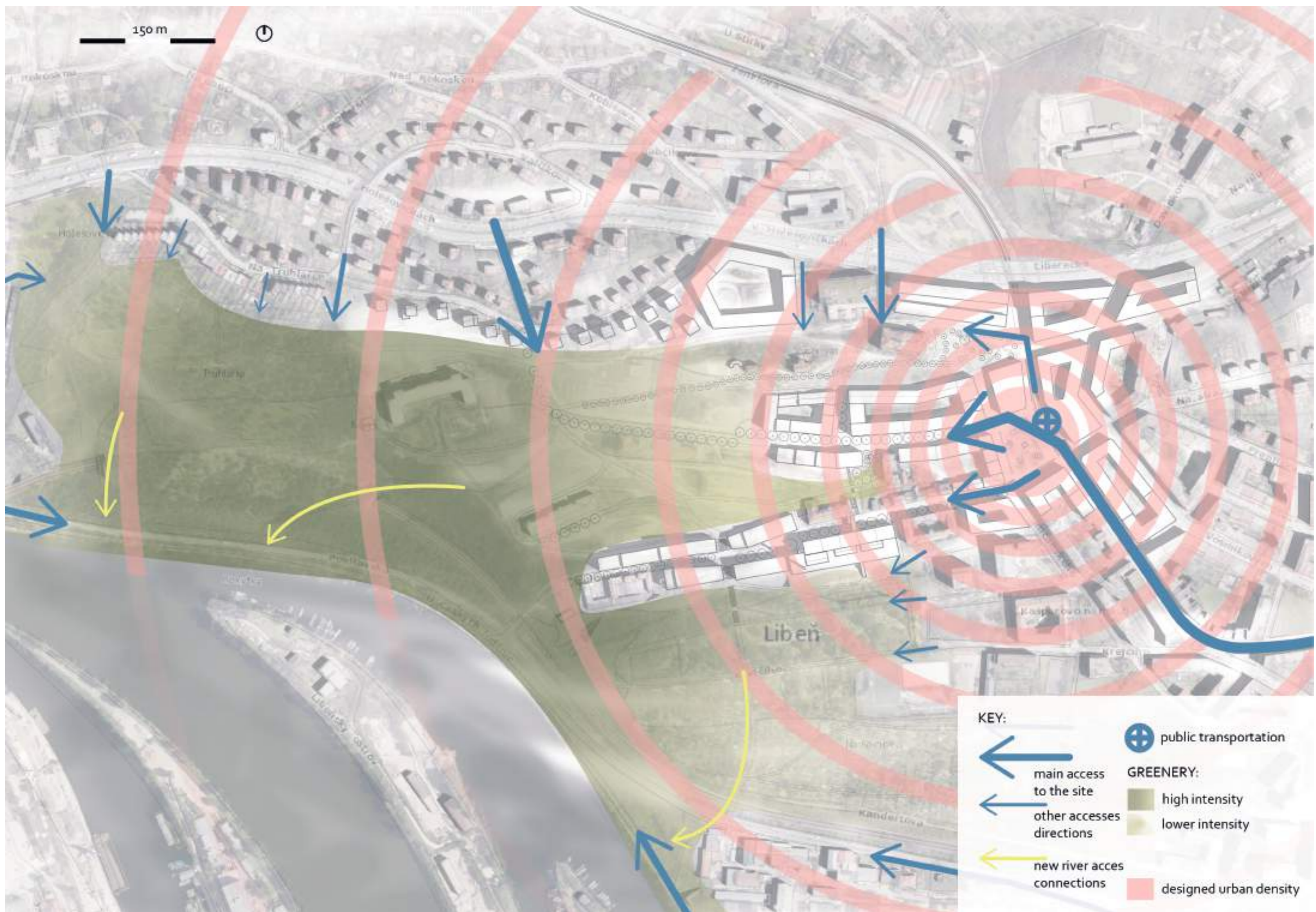
Nature is here to serve as a new healing influence for the body and soul. Where the technology of today's hospitals is limited by natural conditions, the place can heal on its own.

My goals regarding the design:

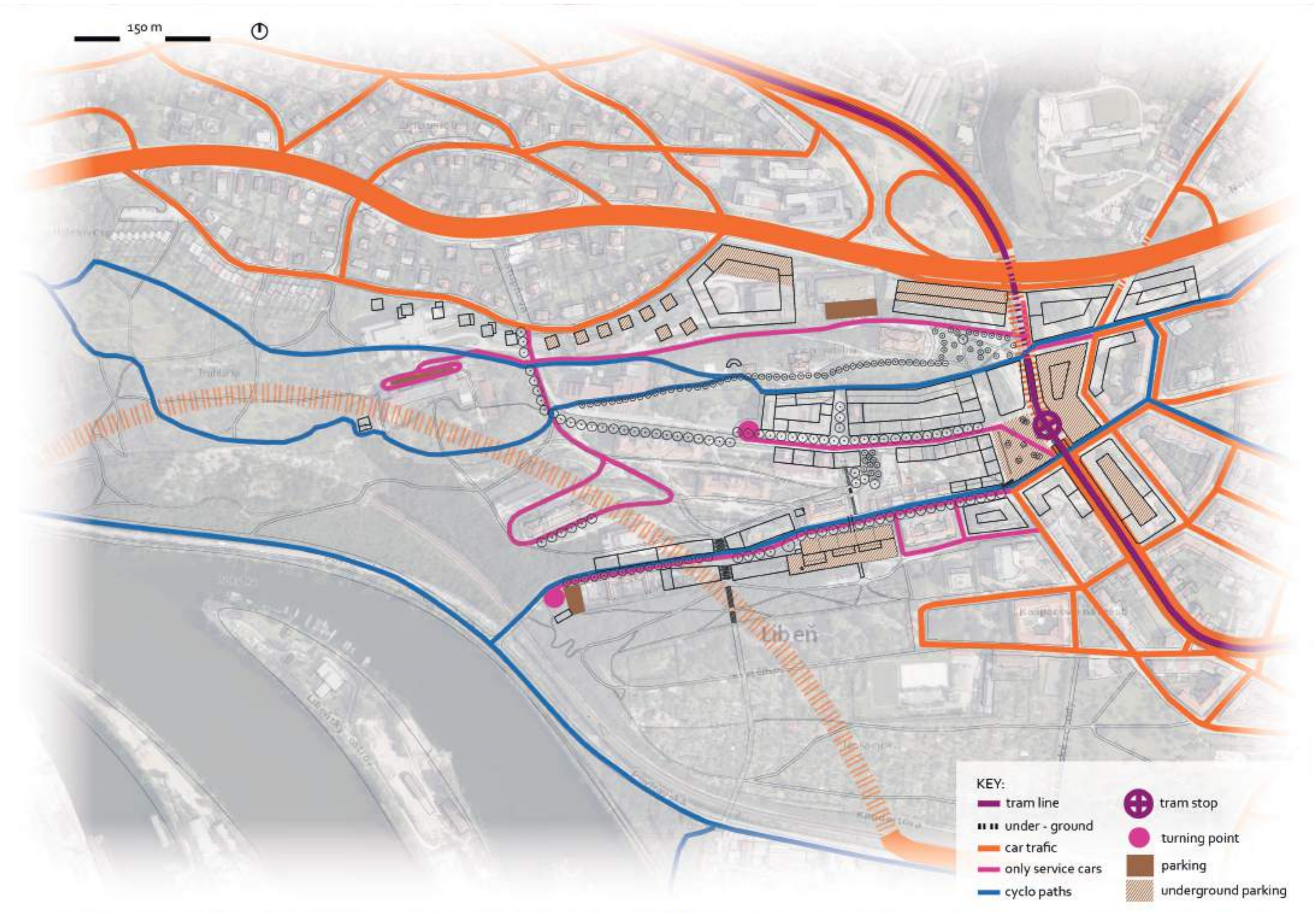
- 1. Move 100% of inpatient care to a more suitable ground. Keeping several outpatient services.*
- 1. Form functional square Na Stráži. Make it a gravity centre of the site. Commercial parter along the whole perimeter.*
- 1. Make functional mix, housing, shops, hobby and rest activities, recreation, offices, civic services, culture and healthcare.*
- 1. Create multiple (3+) new pedestrian connections to the river. And add a cyclo path through bulovka site and Bílá skála.*
- 1. Eliminate car traffic through living spine of Bulovka - Bílá skála. (only public maintenance and IRS)*

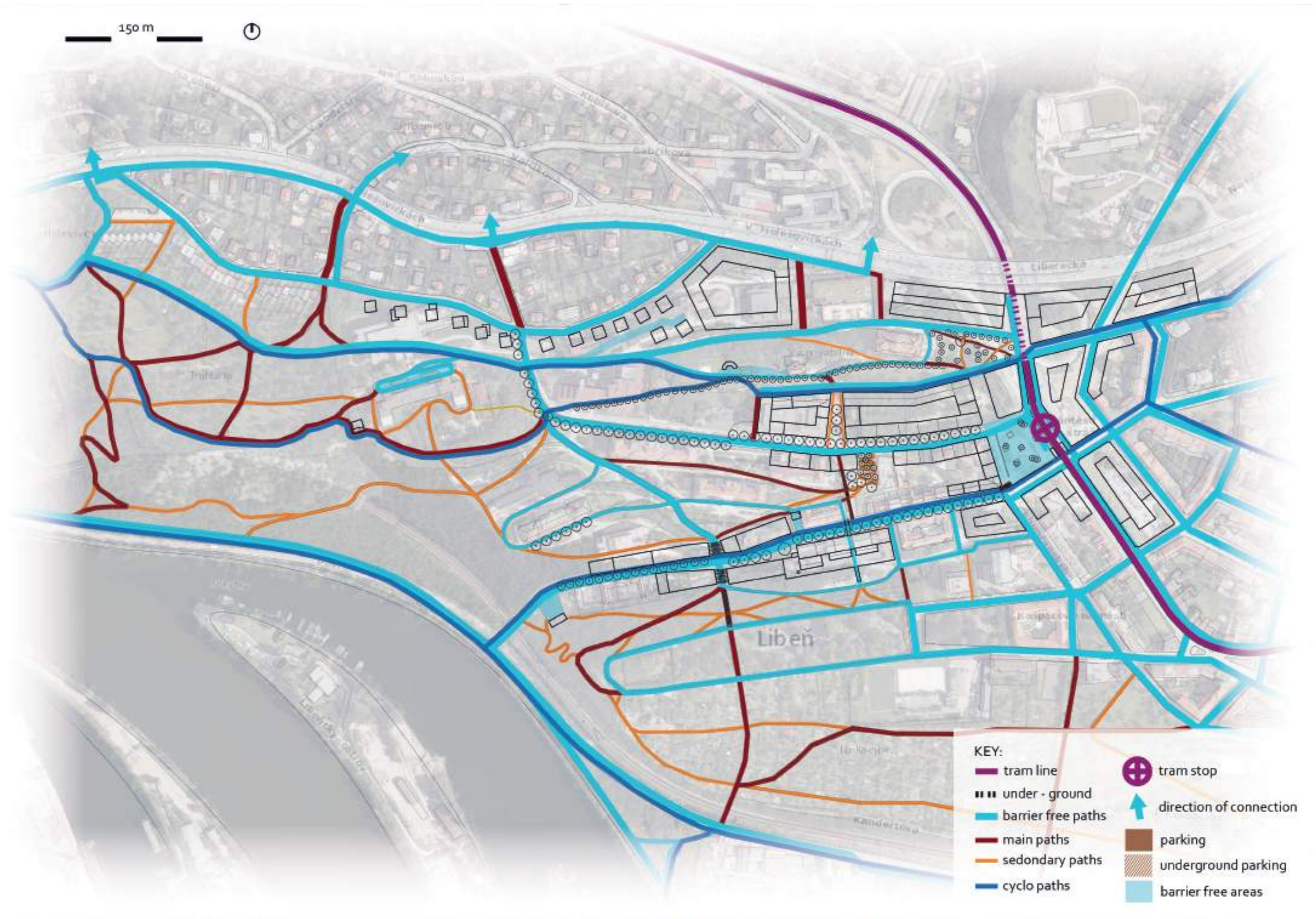
| | |
|---------------------------|----|
| there once was a hospital | 1 |
| final proposal | 3 |
| first acquaintance | 15 |
| data geathering | 17 |
| setting goals | 20 |
| development towards goals | 26 |

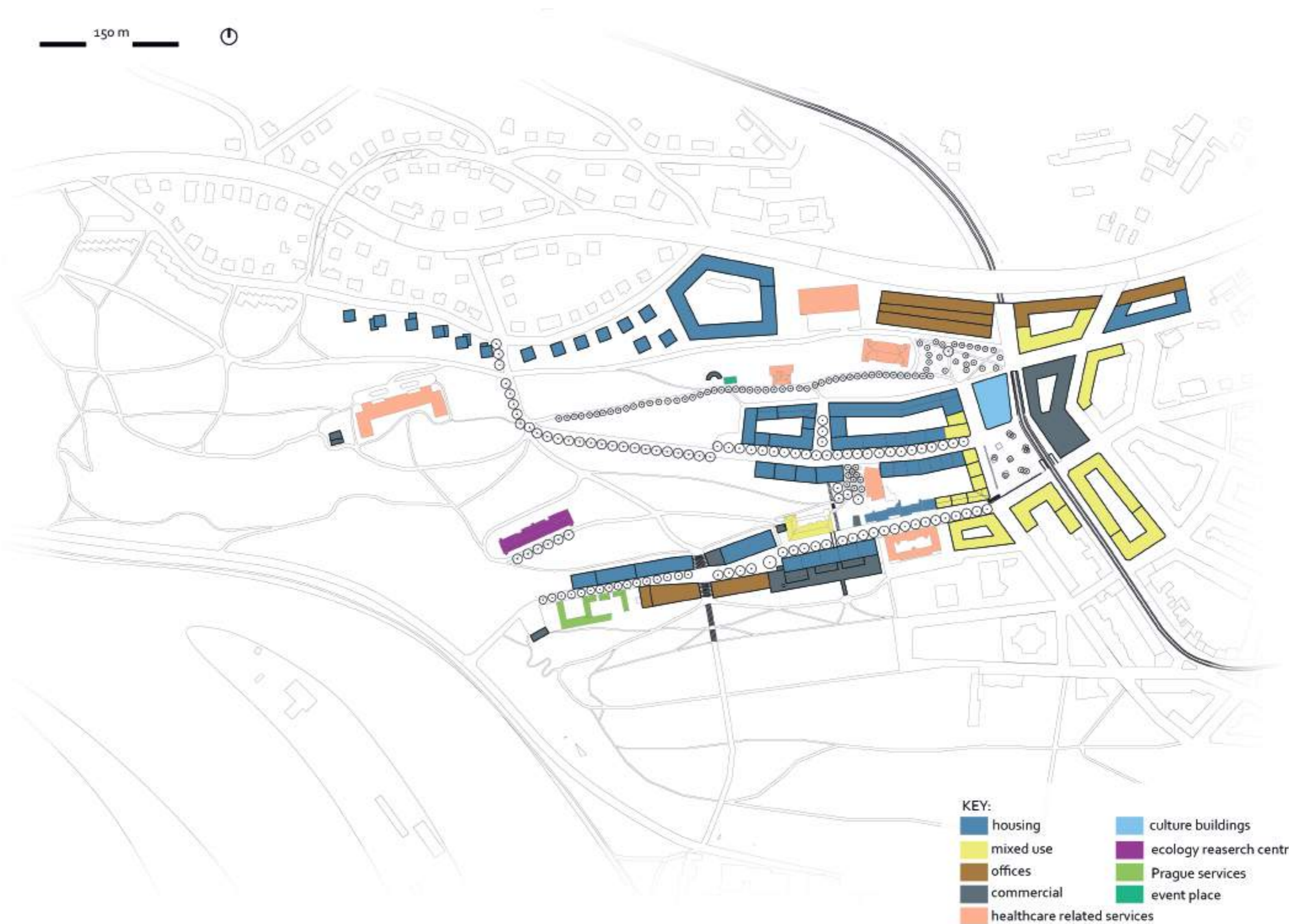


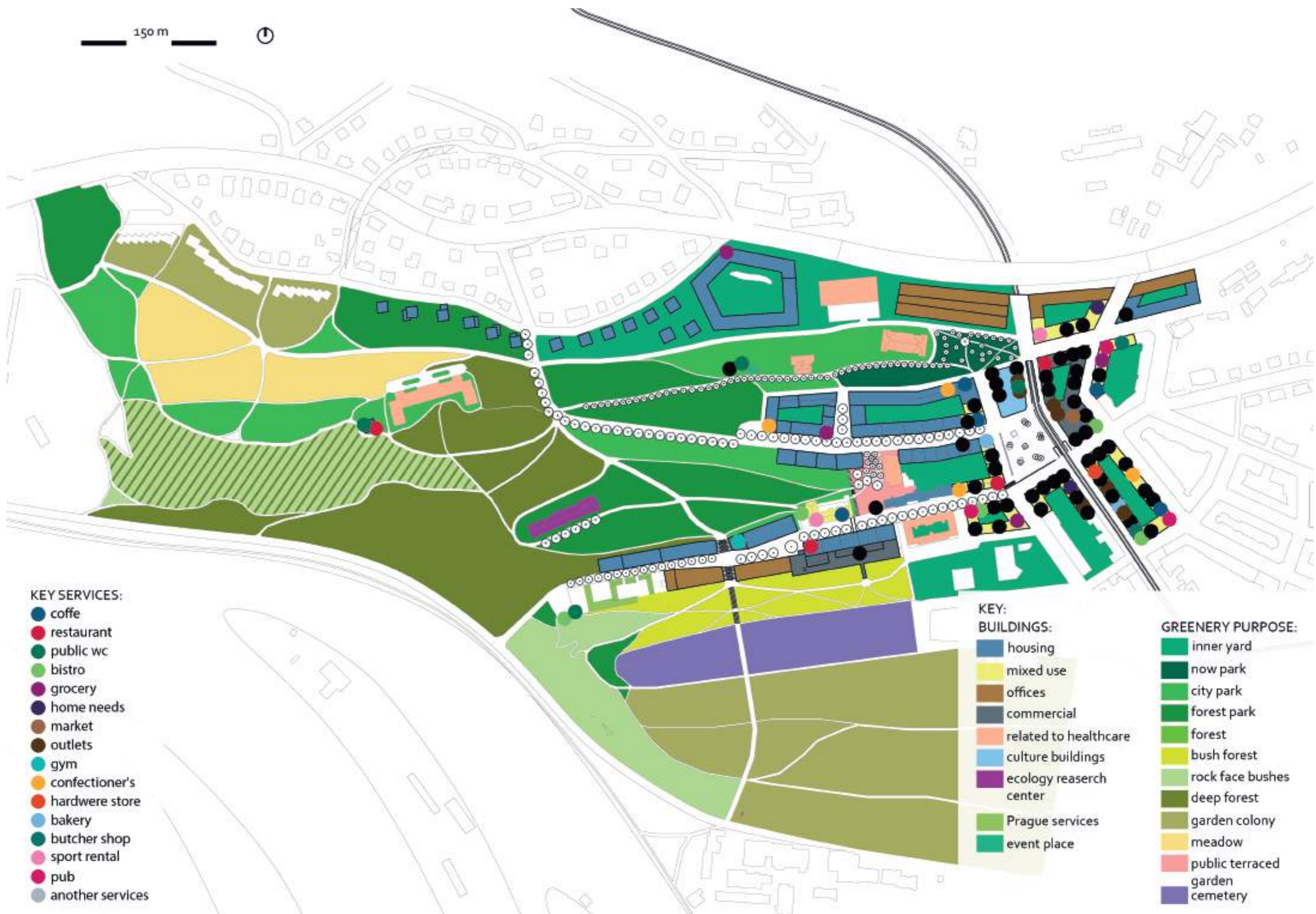






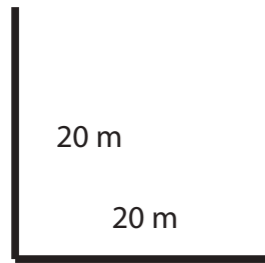


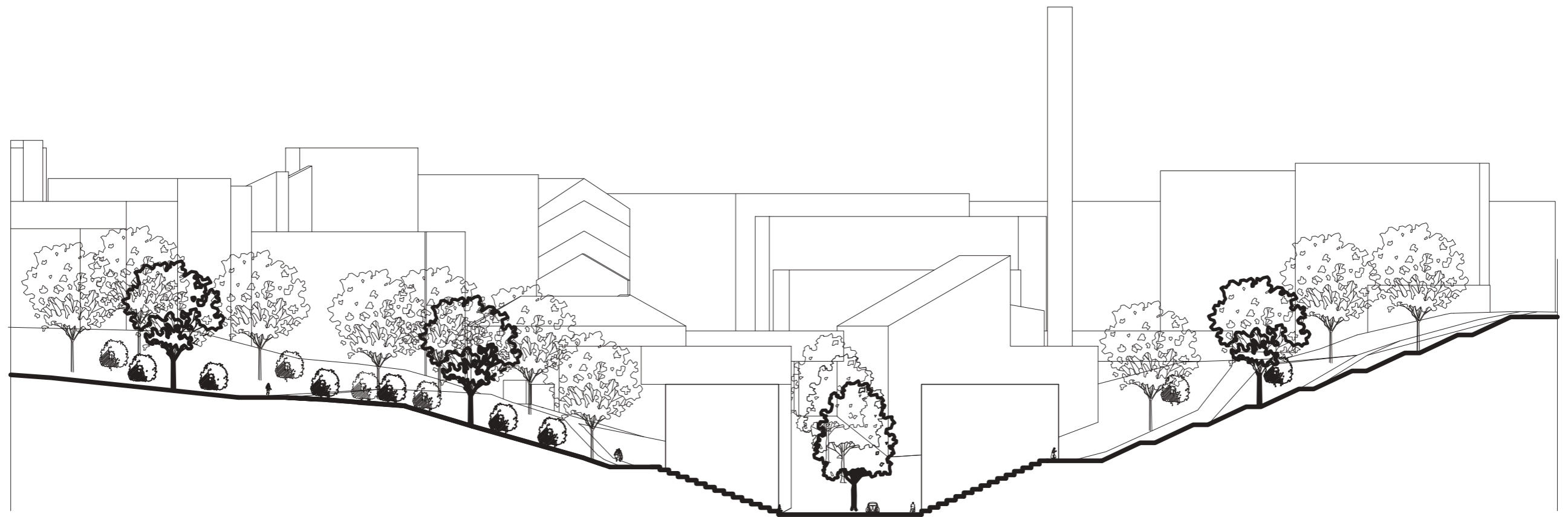
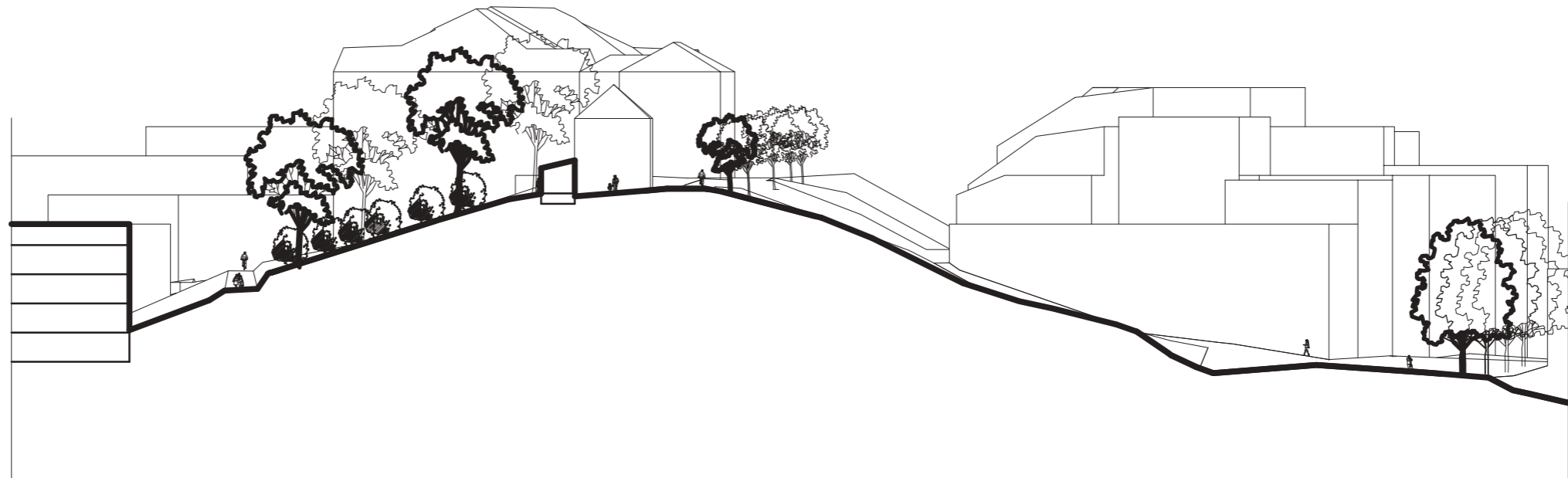
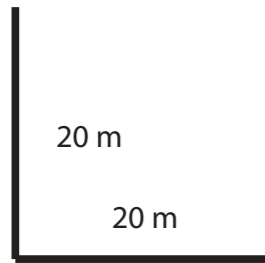












evolution process

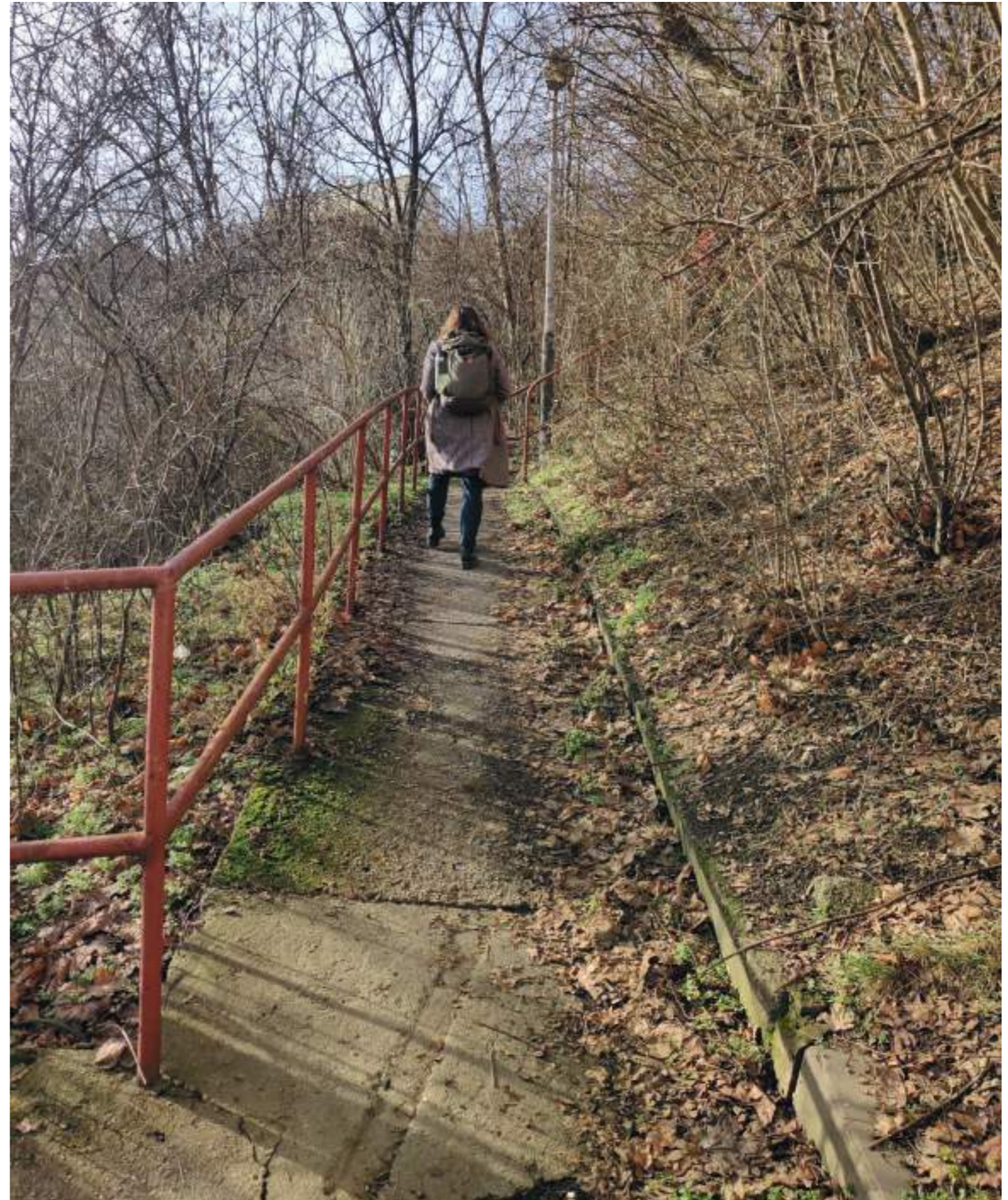


possible paralel with Kinských garden





possible paralel with Kinských garden





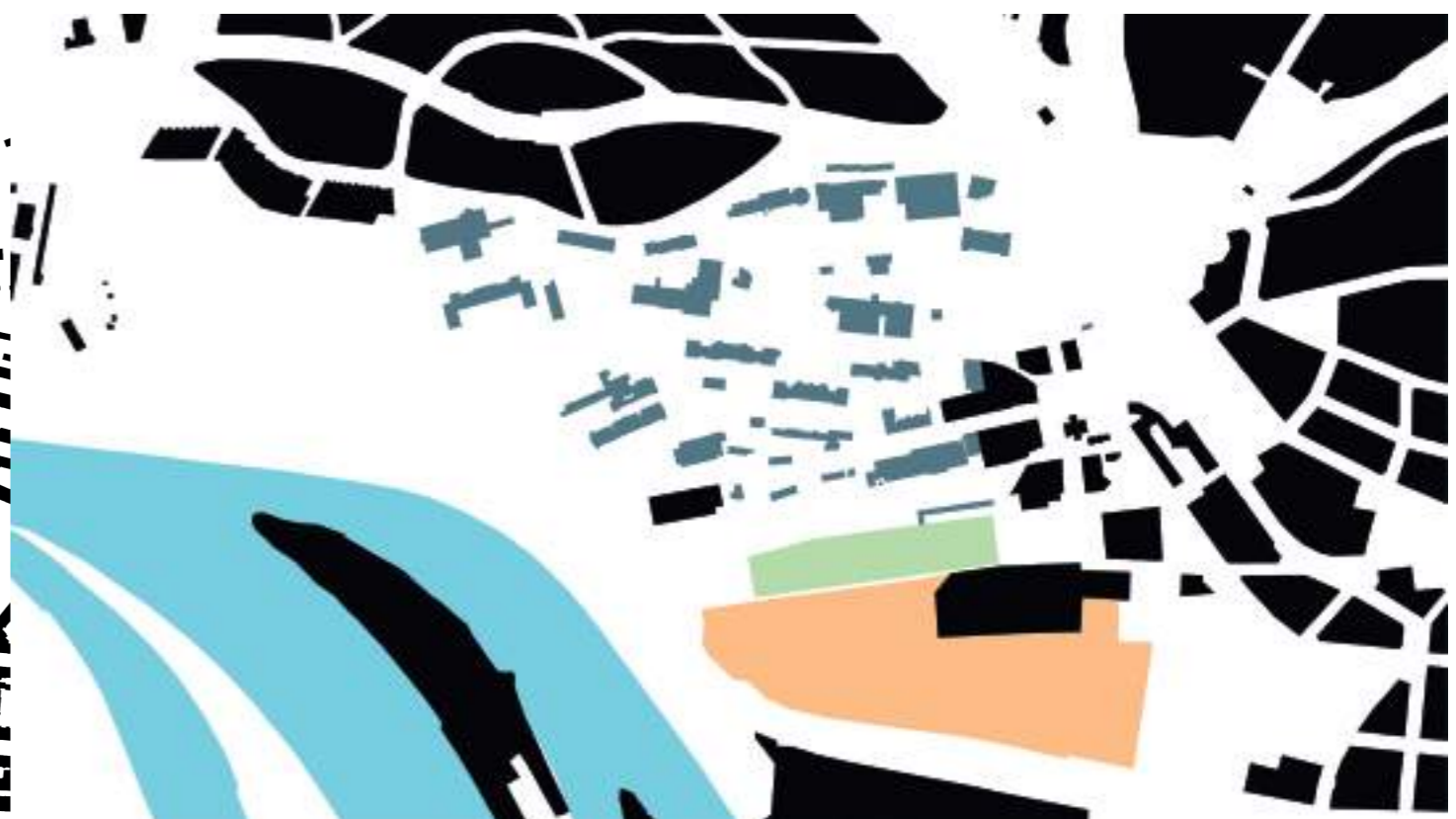
CAD base



economy, facilities

schwarzplan

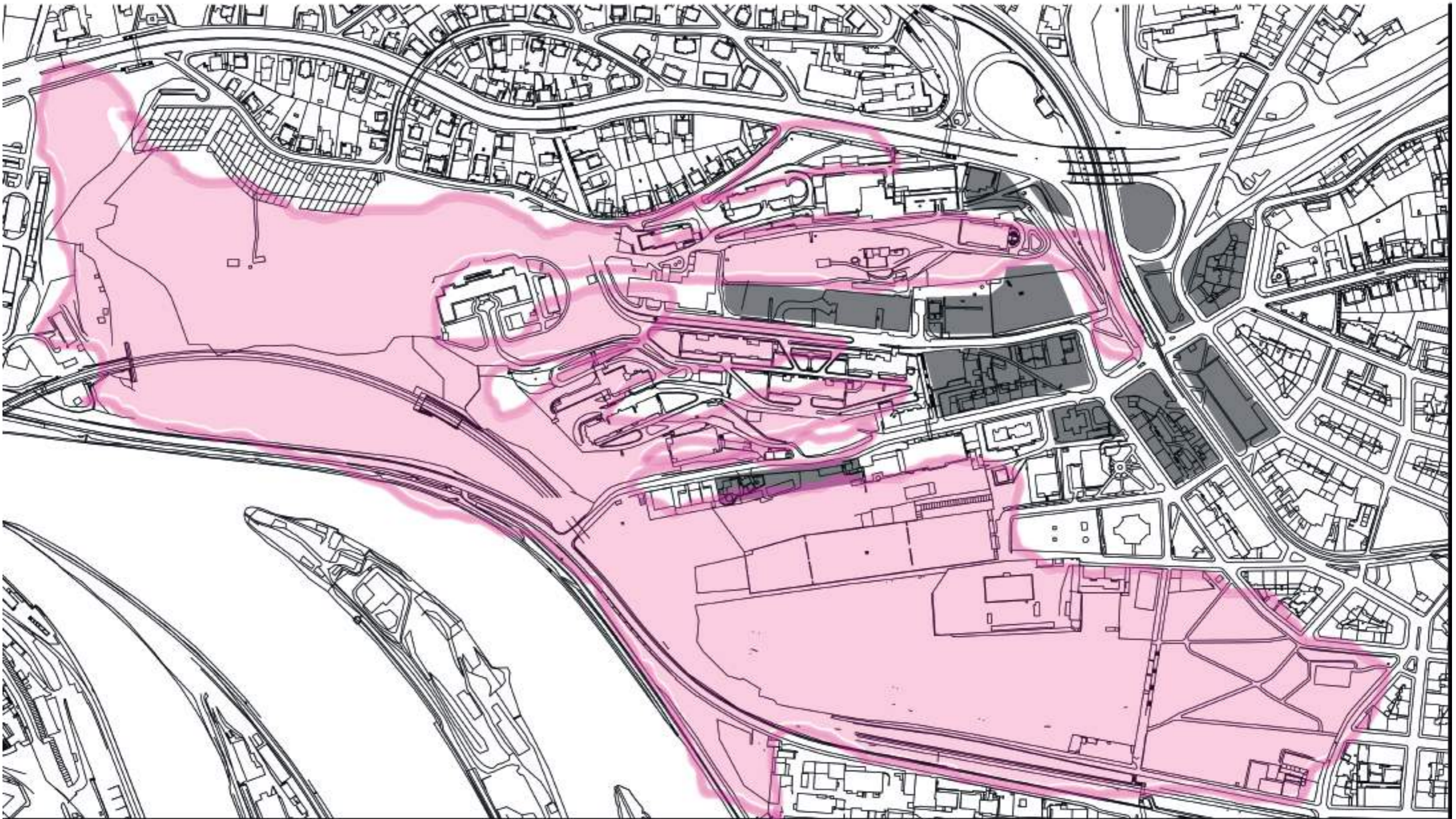
public - private spaces

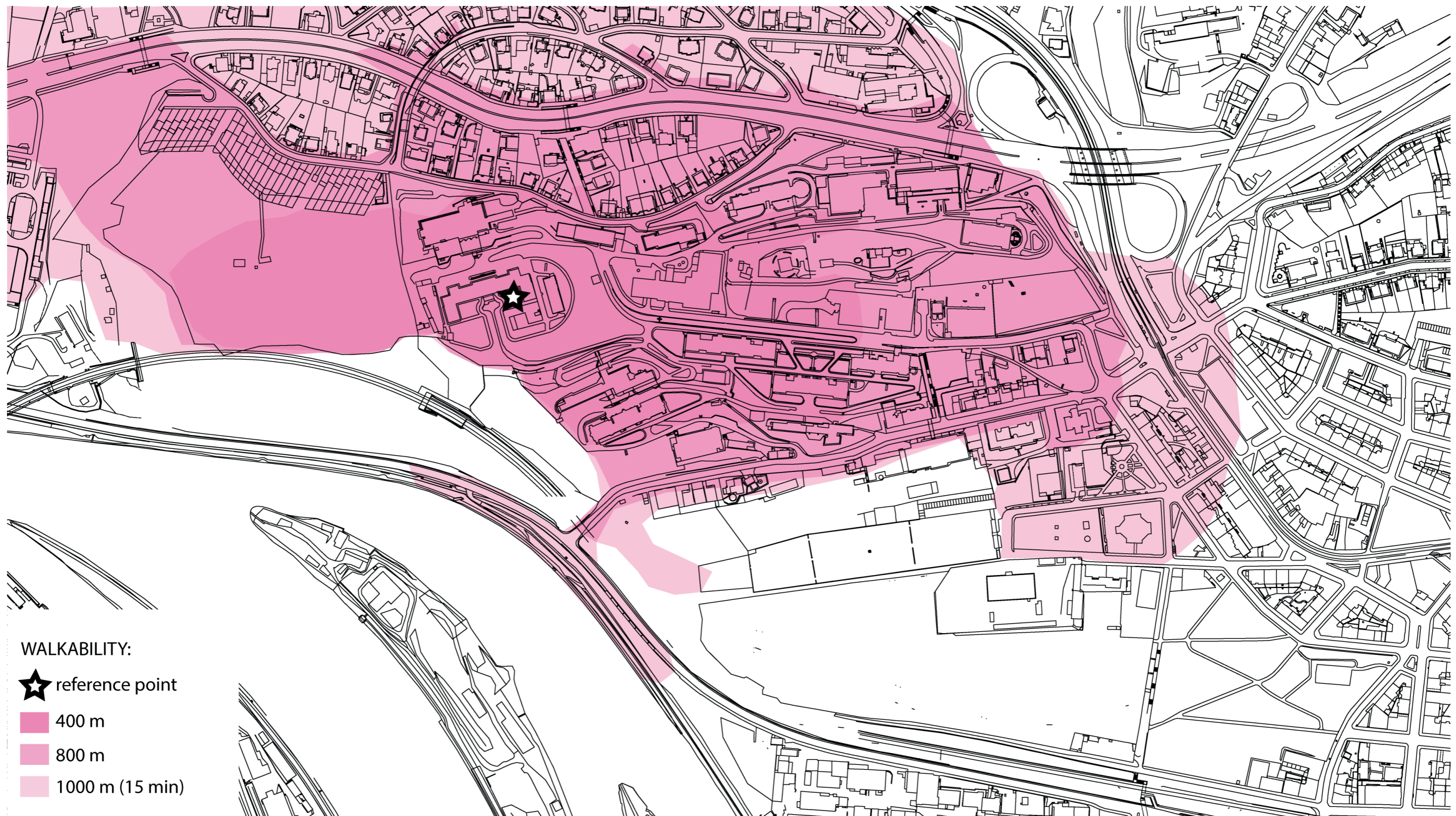


first try for a general idea

return to ecological synchronisation

urban densification









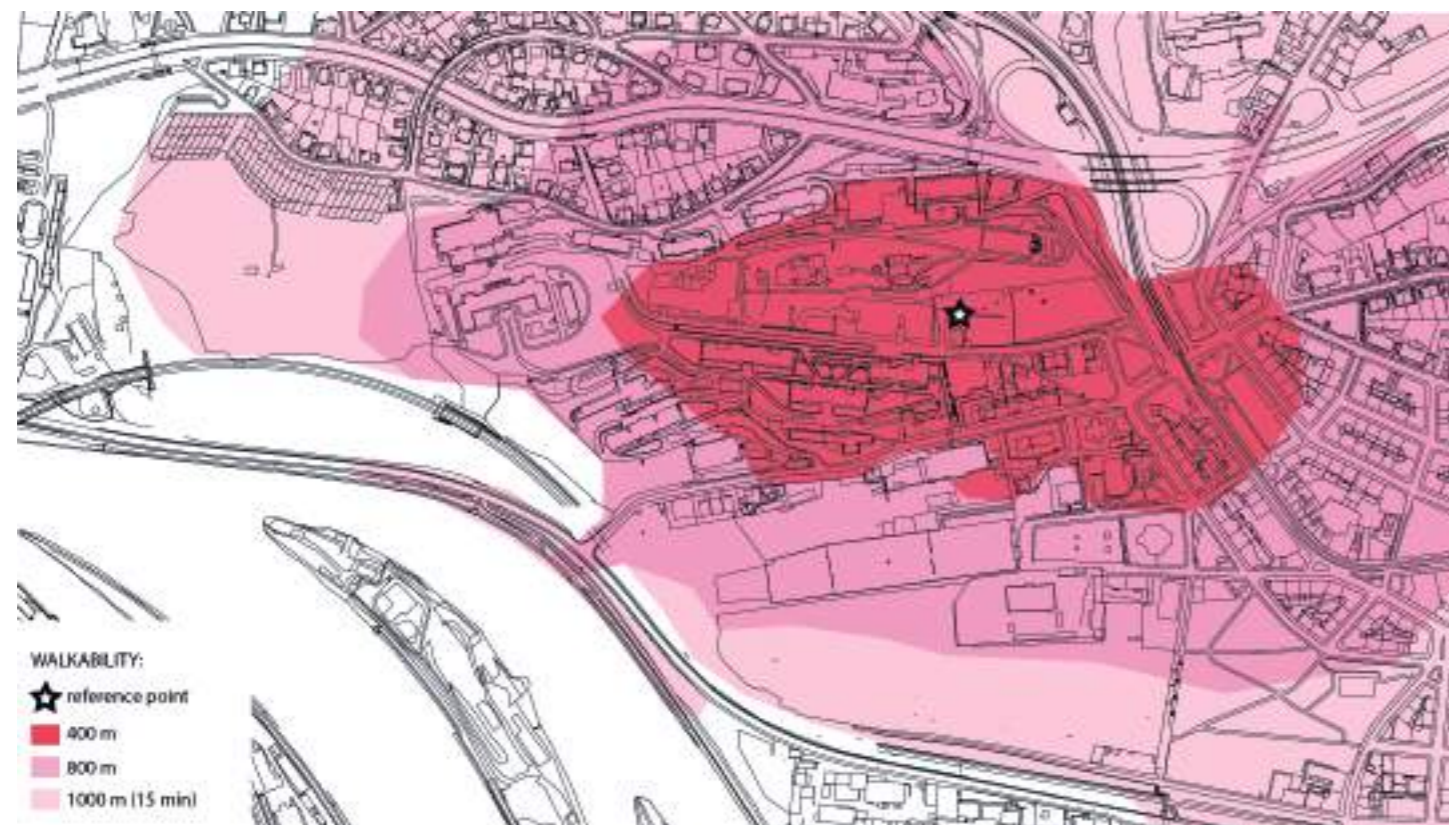
ownership



economy, facilities

walkability representative 1

walkability representative 2



Group Vision statement:

recognise conection

establish conection

recreate conection

nourish conection

maintain conection



general idea



new schwarzplan footprint

developing general concept for design

new public - private spaces ratios

idea of greenery extension and restoration





Na Stráži square - intensification

sketched design of significant places in the location

new villas in the rear north-west end



COMMON FEATURES OF ALL OUR DESIGN EFFORT:

=> DERIVED - DESIGN KRITERIA - for Bulovka site:

1. Attention to the support of green structures and overall care of nature in the location.
2. Importance of the connection to the river.
3. Recognition of views and developing the potential of panoramic views in many places throughout the area.
4. Preservation and incorporation of old buildings among new inputs to the area.
5. Pedestrian connectivity.
6. Introducing new housing estates, considering existing structures and built-in forms in the surroundings.
7. Preserving and re-thinking part of health care function in the area.
8. Adding new buildings in the area of the „entrance to the location“, the intersection of Zenklova and Bulovka streets.

MY DESIGN APPROACH:

EXISTING VALUES – to further development and protection

1. Many interesting views to the city of Prague, mainly to the south-west to the centre of the city and also to the east.
2. Quaint morphology, picturesque pathways through nature. Interesting intricate spatial relationships between places within the location. Game of complicated pedestrian connections, hide, seek and surprise principles.
3. Historical buildings from eras since the 19th (17th) century.
4. Significant nature that is unique in the whole of Prague. Direct connection to the natural monument Bílá Skála. And also the closeness of the river.

NEWLY INTRODUCED VALUES – for long term synchronisation with natural systems

1. Functional diversity throughout the location. Polyfunctional buildings and areas, with prevailing function proper to its specific position in the structure and surrounding conditions.
2. Composed hierarchy and intentional design of spaces with a high emphasis on its function as a part of the whole district. Ranging from high economically active uses to the culture in public spaces as far as the designations of each node in the connected natural structure.
3. Intensive and supported natural park (even forest) function. The revived original form of nature, with the new soft presence of humans.
4. Walkthrough, ride by bike connections with the surrounding areas of Prague. Multi-directional accessibility of the place, and its permeability for citizens and visitors.
5. Remnant of hospital function in form of „outpatient“ health care. Re-use of some existing previously hospital buildings. Taking advantage of the healing power of nature, in form of mental and physical soothing influence.

MY VISION STATEMENT – and its explanation

„there once was a hospital“

- I want to guide the process of reconnecting the area with its surroundings. Its synchronisation within a larger matrix of the city, namely intensification, diversification and hierarchisation. But with an eye on the historical importance and sites heritage in the healthcare niche.

MY KONCEPT

Establishing a local urban centre to the Na Stráži Square. And largely develop and return natural conditions in the western part. Gently removing unnecessary exploitation of the place with disturbing structures. Using new housing development and diverse mixed-use buildings to support, rich and complex city functions. Keeping in mind important frame lines as surrounding structures, uses, morphology, access to the river, needs of future citizens, users and even visitors of this area.



heavy traffic lines in the future

circulation study

access for cars

only users car access



COMMON FEATURES OF ALL OUR DESIGN EFFORT:

=> DERIVED - DESIGN KRITERIA - for Bulovka site:

1. Attention to the support of green structures and overall care of nature in the location.
2. Importance of the connection to the river.
3. Recognition of views and developing the potential of panoramic views in many places throughout the area.
4. Preservation and incorporation of old buildings among new inputs to the area.
5. Pedestrian connectivity.
6. Introducing new housing estates, considering existing structures and built-in forms in the surroundings.
7. Preserving and re-thinking part of health care function in the area.
8. Adding new buildings in the area of the „entrance to the location“, the intersection of Zenklova and Bulovka streets.

MY DESIGN APPROACH:

EXISTING VALUES – to further development and protection

1. Many interesting views to the city of Prague, mainly to the south-west to the centre of the city and also to the east.
2. Quaint morphology, picturesque pathways through nature. Interesting intricate spatial relationships between places within the location. Game of complicated pedestrian connections, hide, seek and surprise principles.
3. Historical buildings from eras since the 19th (17th) century.
4. Significant nature that is unique in the whole of Prague. Direct connection to the natural monument Bílá Skála. And also the closeness of the river.

NEWLY INTRODUCED VALUES – for long term synchronisation with natural systems

1. Functional diversity throughout the location. Polyfunctional buildings and areas, with prevailing function proper to its specific position in the structure and surrounding conditions.
2. Composed hierarchy and intentional design of spaces with a high emphasis on its function as a part of the whole district. Ranging from high economically active uses to the culture in public spaces as far as the designations of each node in the connected natural structure.
3. Intensive and supported natural park (even forest) function. The revived original form of nature, with the new soft presence of humans.
4. Walkthrough, ride by bike connections with the surrounding areas of Prague. Multi-directional accessibility of the place, and its permeability for citizens and visitors.
5. Remnant of hospital function in form of „outpatient“ health care. Re-use of some existing previously hospital buildings. Taking advantage of the healing power of nature, in form of mental and physical soothing influence.

MY VISION STATEMENT – and its explanation

„there once was a hospital“

- I want to guide the process of reconnecting the area with its surroundings. Its synchronisation within a larger matrix of the city, namely intensification, diversification and hierarchisation. But with an eye on the historical importance and sites heritage in the healthcare niche.

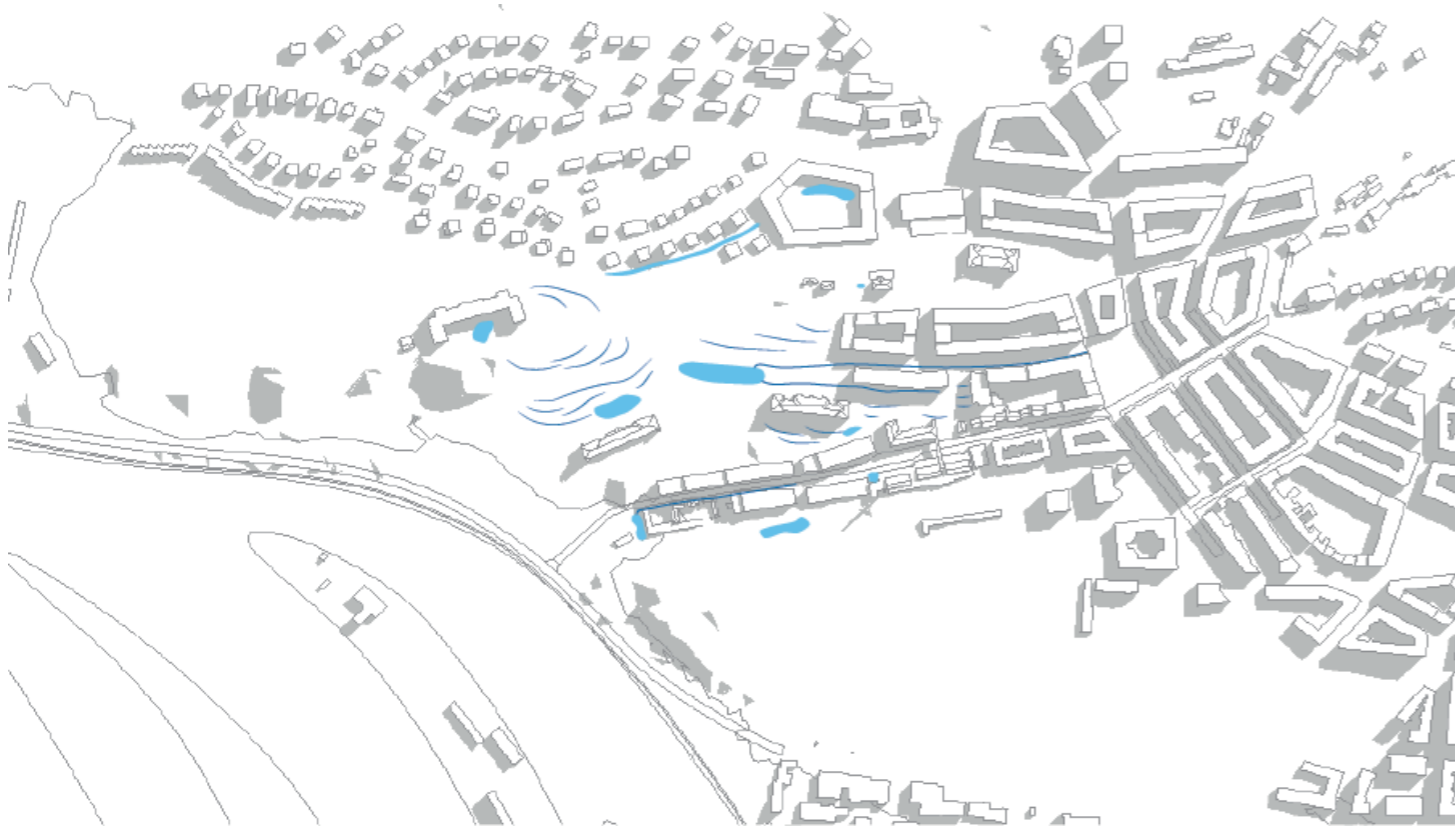
MY KONCEPT

Establishing a local urban centre to the Na Stráži Square. And largely develop and return natural conditions in the western part. Gently removing unnecessary exploitation of the place with disturbing structures. Using new housing development and diverse mixed-use buildings to support, rich and complex city functions. Keeping in mind important frame lines as surrounding structures, uses, morphology, access to the river, needs of future citizens, users and even visitors of this area.

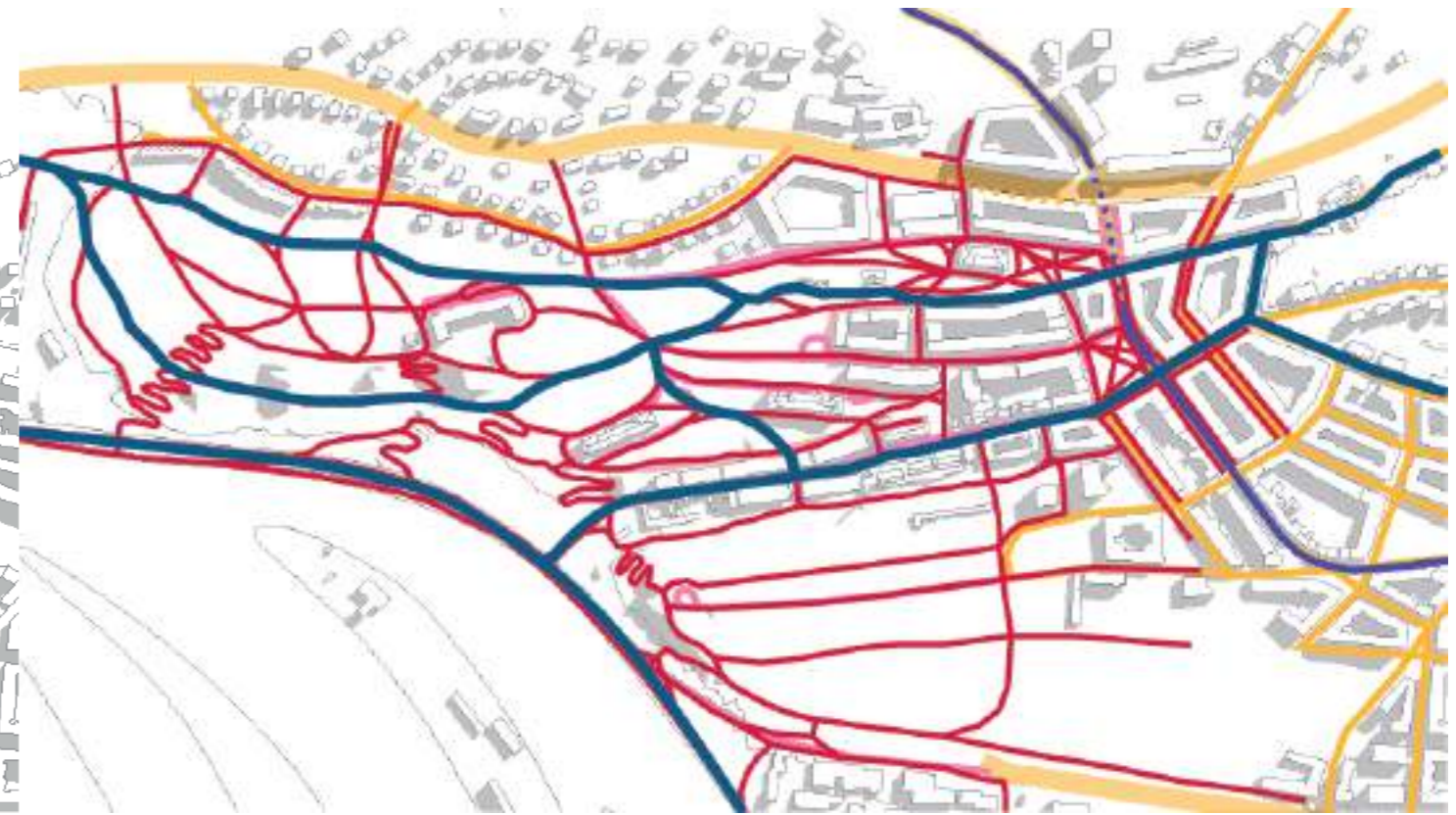
19. 4.

SPECIFIC GOALS: (measurable, absolut)

1. Move 100% of inpatient care to a more suitable ground. Keeping several outpatient services.
1. Form functional square Na Stráži. Make it a gravity centre of the site. Comercial parter along the whole perimeter.
1. Make functional mix, housing, shops, hobby and rest activities, recreation, offices, civic services, culture and healthcare.
1. Create multiple (3+) new pedestrian connections to the river. And add a cyclo path through bulovka site and Bílá skála.
1. Eliminate car trafic through living spine of Bulovka - Bílá skála. (only public maintenance and IRS)



water treatment

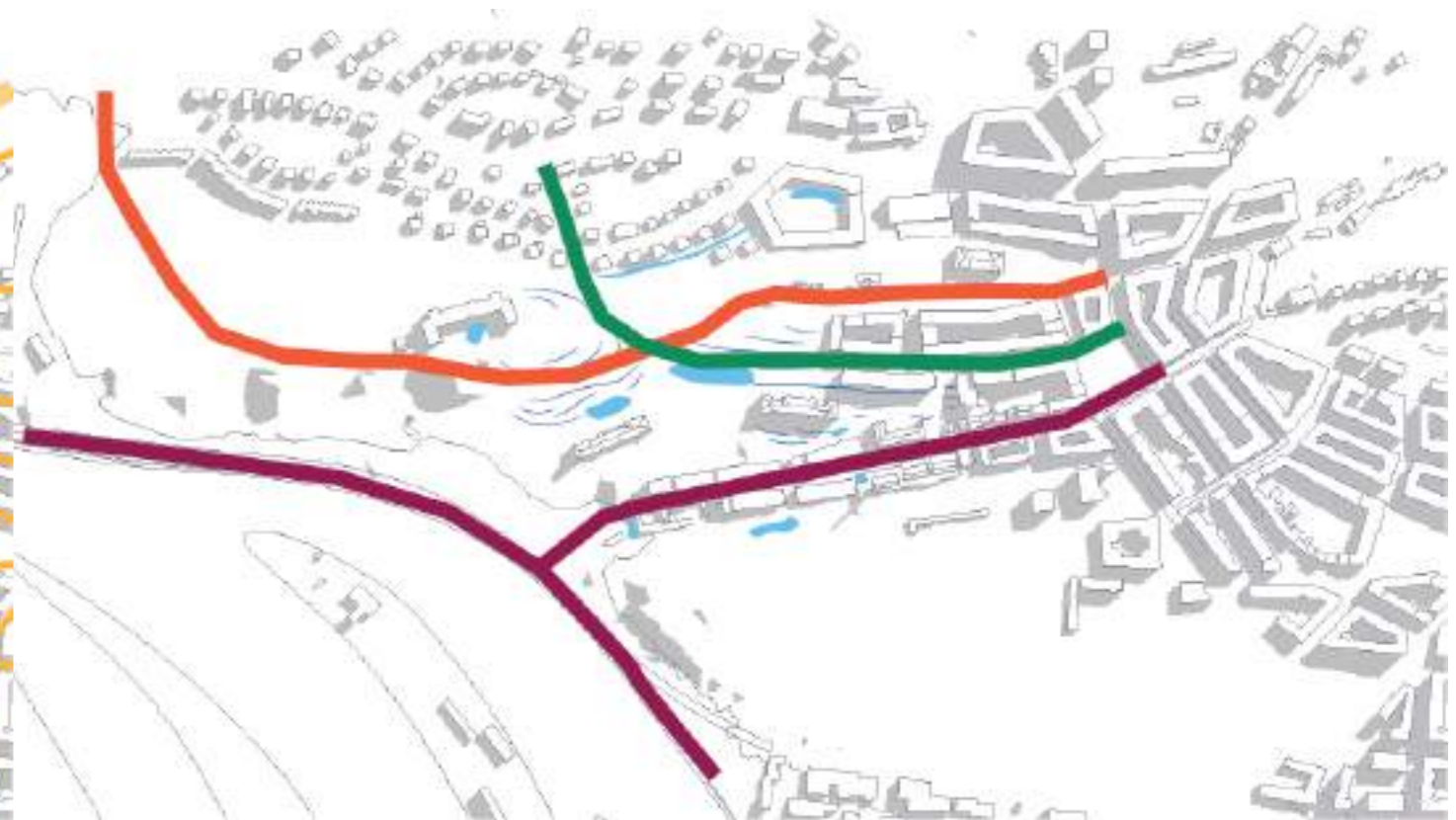


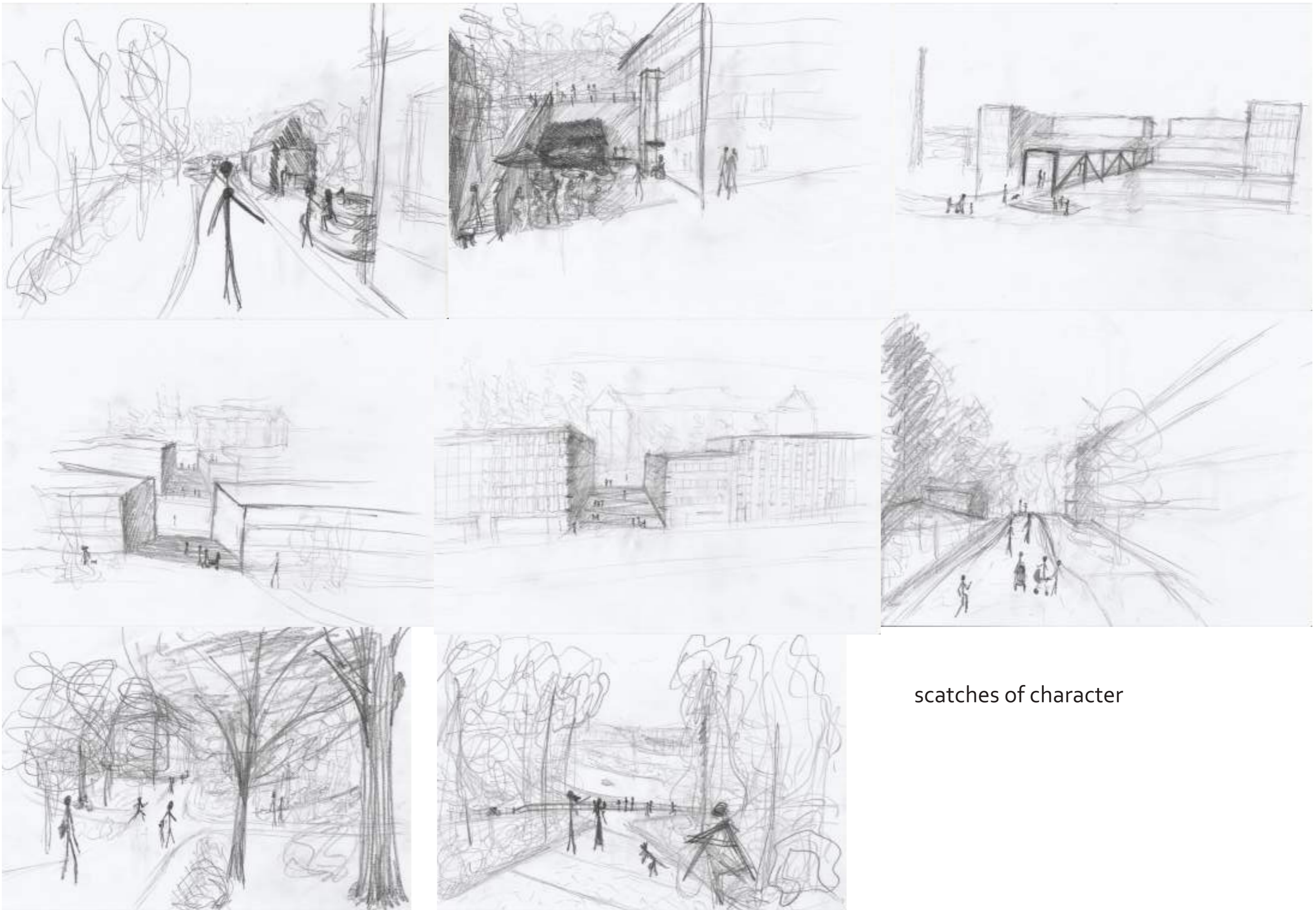
circulation map idea

advanced design idea

levels of car access

concept of 3 different paths with different characters based on its level





sketches of character

usage of 3D model for integral designing
process in late phase of the project

