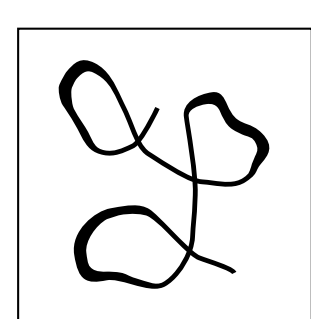
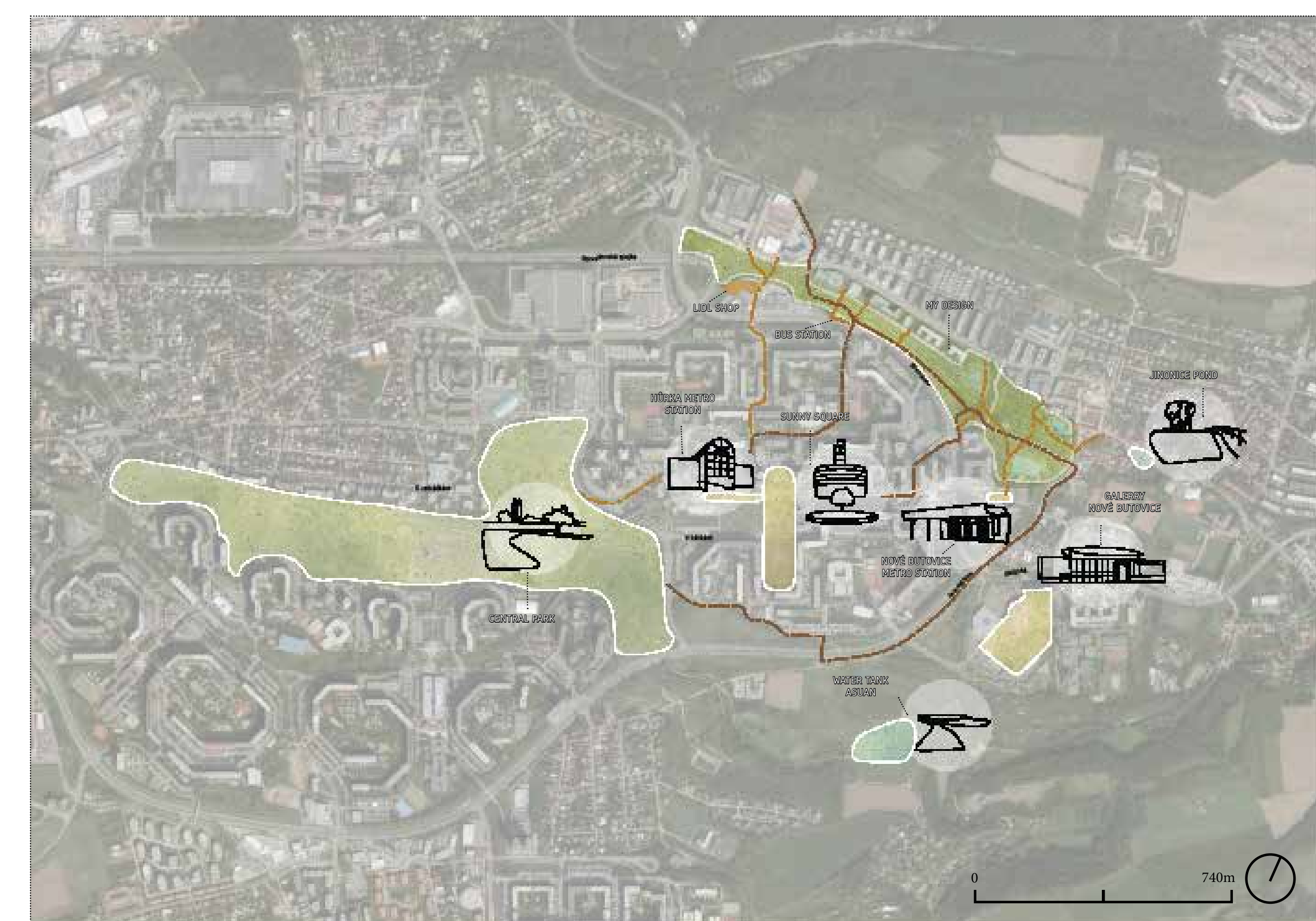




place of CONNECTION



WIEDER CONNECTIONS.



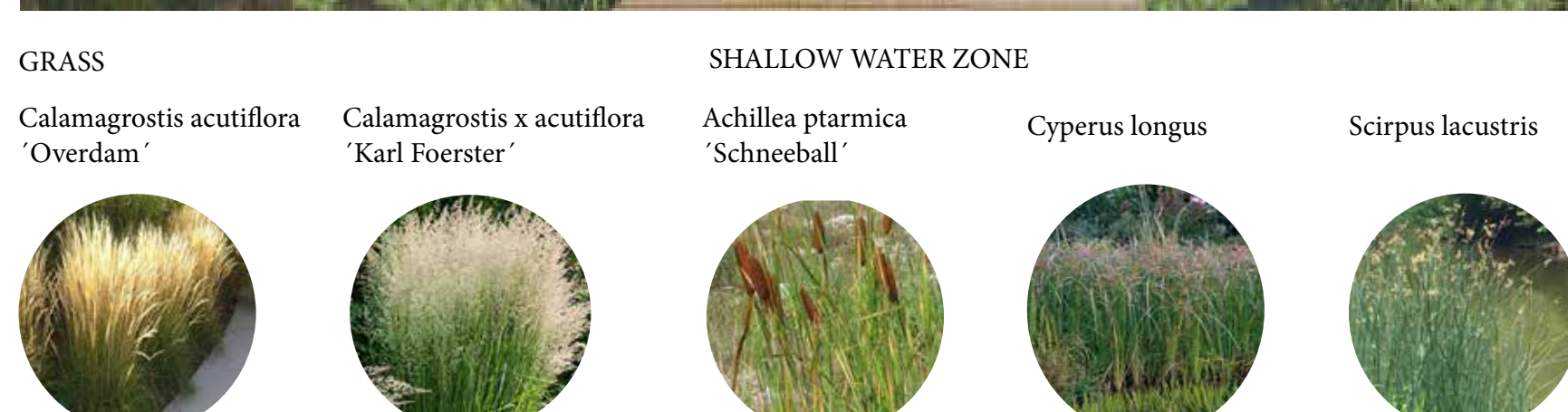
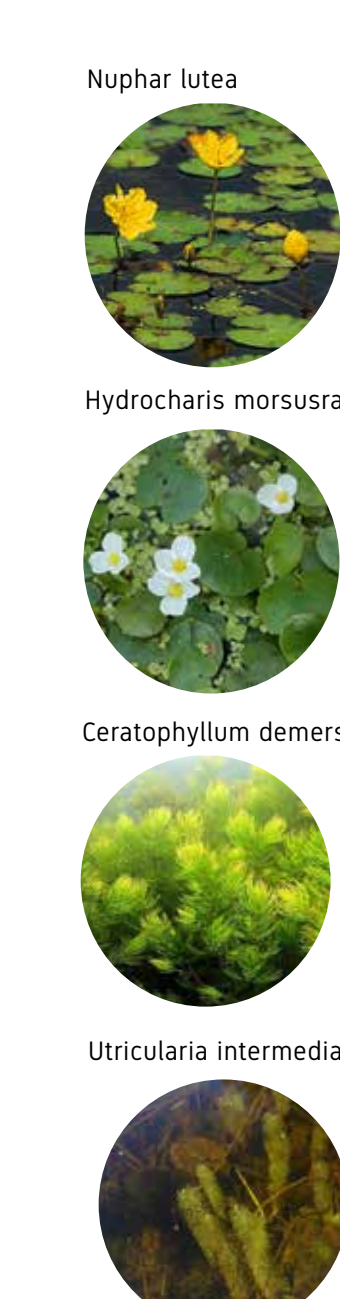
„Area Stodůlky / Jinonice is located in the southwestern part of Prague on the metro line B and at the exit from the Prague - Pilsen motorway.“

„The treated area is surrounded on the north side by urban development and on the other by the road.“

„The newly designed park offers better permeability to the landscape and at the same time creates a recreational place for meetings and sports activities.“

WETLAND VEGETATION

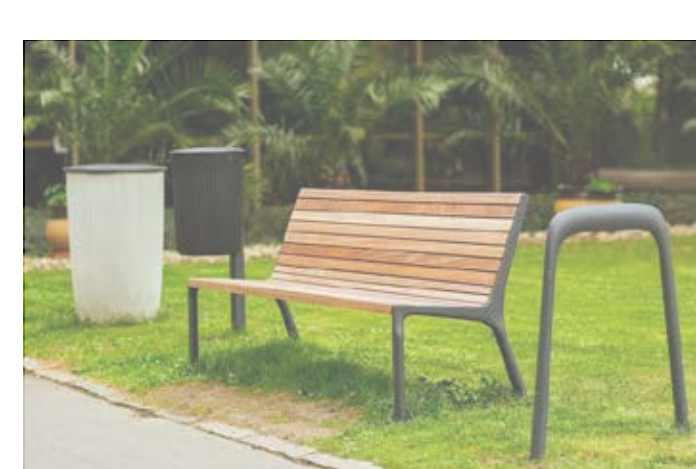
ZONE OF WATER LILIES AND SUBMERGED PLANTS



PROJECT GOALS

- „Connect greenery with water in the city“
- „Connect new buildings with the center“
- „Improve the permeability of the landscape. At the same time create a place that will **connect** people there“

FURNITURE



LEGEND



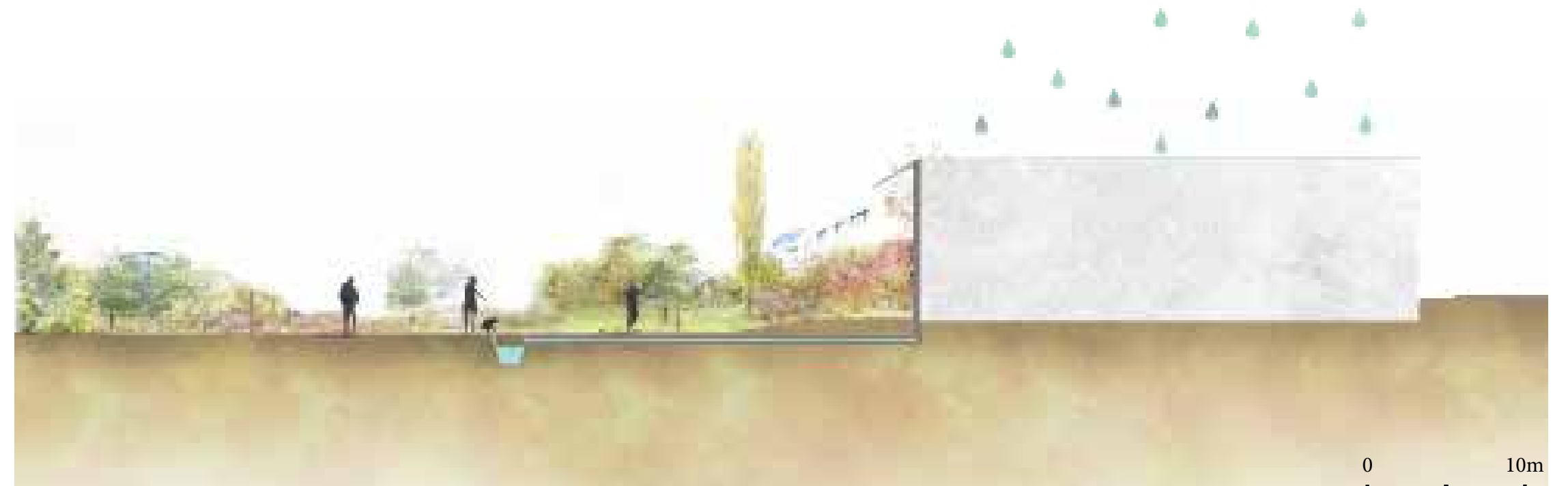
SECTION A-A'



RAINWATER MANAGEMENT

- „WATER FROM ROOFS.“
„Rainwater is drained from the roofs of the surrounding houses by pipes into an open riverbed, which runs along the length of the area.“
- „The water from riverbed run into the infiltration pond where si cleaned by wetlands plants. In case of heavy rains and more accumulated water is water drained into a retention tank, where it would be retained and kept clean.“

SECTION B-B'



- „WATER FROM ROADS.“
The polluted water from the roads is drained into the green belt and led through pipes to the cleaning wetland of a smaller size, where it is cleaned and after time is taken to the retention tank.

SECTION C-C'



- „THIRD WETLAND_PANSKÝ POND.“
„Water from the surrounding houses is also drained into it, and in the event of heavy rains, it is connected by an open trough to a retention tank, where the water would drain.“
- „OVER FLOODED.“
„In case there would be above-average water intake, the third wetland is connected to Jinonický stream so the water cloud has always where to run“