



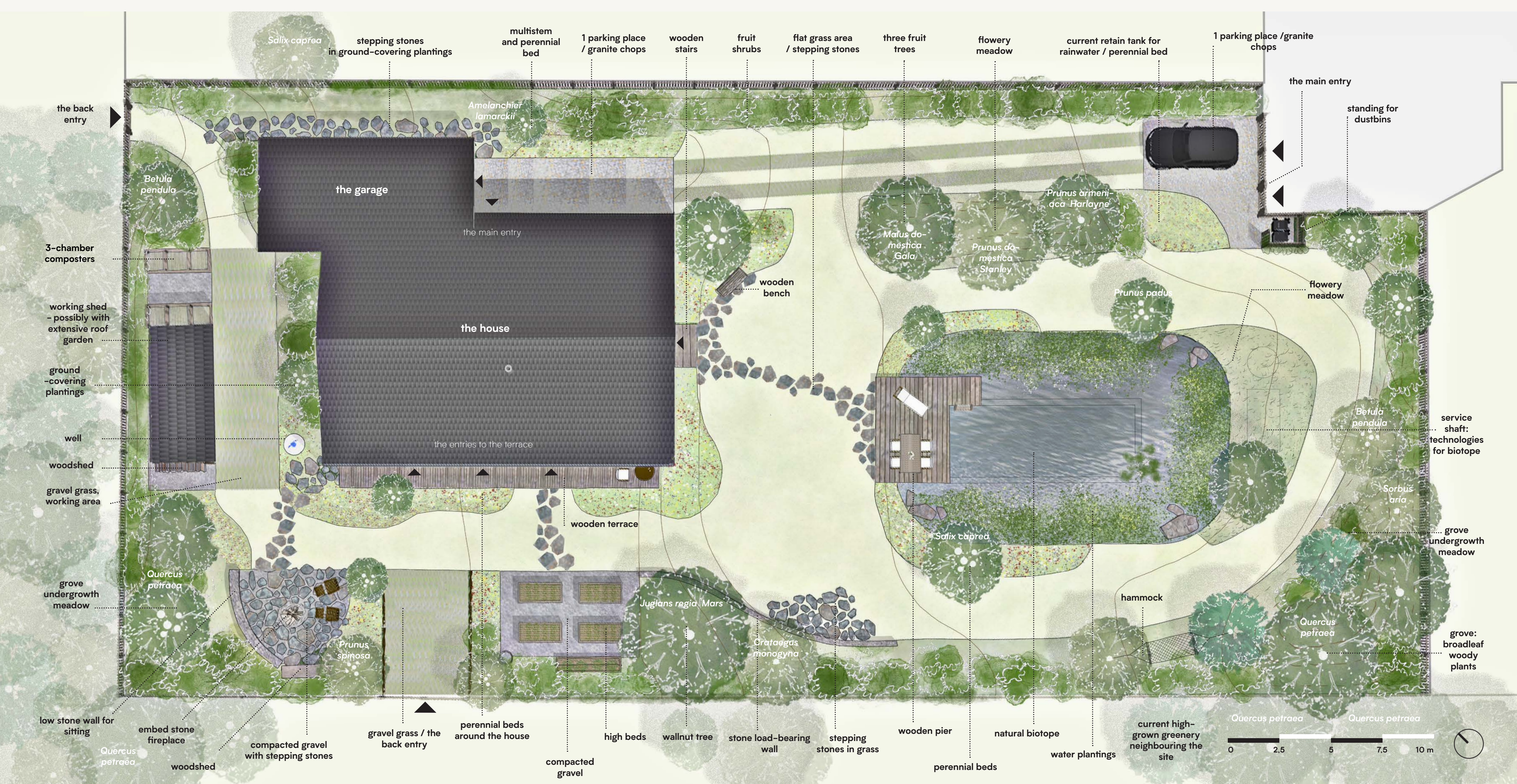
perspective view at the lake and the house from south

THE GARDEN with LAKE

The GARDEN with LAKE is a medium size piece of land located in picturesque landscape of Středočeský region. The site lies at the end of developed area and is surrounded from one side with field path, small grove and meadow, from the other side with two other gardens with family houses. The goal of the study project was of course to design a garden which would satisfy its everyday users and their wishes, but also one, which would fit in with its surroundings. The task was then to find the right means for that. In the end, they turned out to be the rightful combination of elements of both the "hardscape" and "softscape", which help to create a garden which feels as the one able of blending in as well as the one able of accommodating the needs for relaxation, hard garden work (because who would not love gardening :) and the possibility to produce your own crops. The elements creating the garden spirit are the use of the local materials (granite, gneiss, oak wood etc.), the local deciduous woody plants, extensive herbal lawn and a meadow, which is located in the calm part of the garden, combined with two grove areas on the opposite sides of the site, which gently passes into the high-grown greenery of the local groves behind the garden fence. And of course, last but not least, the natural biotope in the lower part of the garden is the key element in the space. It is situated below the house, in the part of the garden where you would enjoy most of the sun and also of the view at the nearby forest, where by the way lies another small but wild and lovely pond, which, with its beatiful surroundings, actually mostly inspired the creation of THE GARDEN with LAKE.

The study of THE GARDEN with LAKE serves as the source data for the PD of construction implementation - ATRN:

MASTER PLAN m 1:100



AXONOMETRIES



axonometry: view from east |



axonometry: view from south

GARDEN NOOKS AND SPOTS



perspective view at the lake and the house from the grassy patch

the nook of production – high beds

The high beds are one "nook" of the producing part of the garden. They are located on the south-western side of the house, close to the wooden terrace and the entry to the living room with kitchen. This nook is composed of big high beds (2000 x 1000 x 800 mm) for growing vegetables, herbs and eatable perennials. The ground is flat and the surface is of compacted gravel in light gray shade. The new tree situated on the southern side is a walnut tree, which should create a partly shady area for two of the beds.



few examples of the assortment of aromatic, spice and medicinal herbs used in the garden

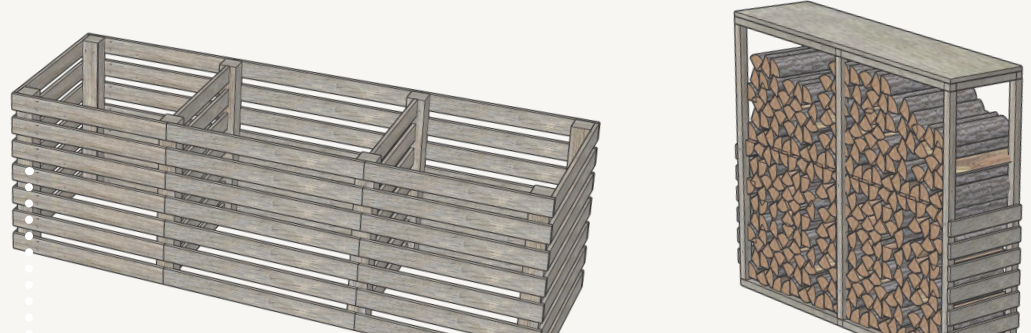


perspective view at the high beds from the wooden terrace near the house

the hobby zone

The hobby zone, or the working zone, is situated behind the house. The current garden cottage house was replaced by newly designed shed, which has two spacious "rooms", from which one can be locked. The shed is adjoined by two three-chamber composters. The grass area in front of the shed is in case of necessity strengthened with gravel grass. The area behind the house is spacious enough to provide necessary space for all types of work which needs to be done at the garden. The complete description of the mobiliar/equipment is presented in the study portfolio.

composter and simple wooden + metal woodshed



perspective view at the working shed and the working zone situated behind the house

the natural biotope

The natural biotope is the main feature in the garden. The swimming area is 9 metres long, 3,5 metres wide and 2,5 metres deep and is defined by big oak beams placed underwater. The lake covers area of 150 m² and from the side of the house is surrounded with mixed perennial beds of hydrophilous and wetland plants, which adjoin the wooden pier. The meadow area on the south covers a space for one/two technology chambers, which are necessary for the natural biotope of type II.

few examples of the assortment of waterplants, hydrophilous plants and other perennials used in and around the lake



perspective view at the grassy patch below the house and the wooden terrace

the grassy patch

The grassy patch is a flat area situated in front of the house, between the terrace and the wooden pier, which adjoins the biotope. From the side of the house, the grassy patch is lined with mixed perennial beds. The terrain goes little bit up to the north of the site to the level of the wooden terrace. The southern side is strengthened with a stone load-bearing wall. The view dominates the current Prunus cerasifera, under which was placed a simple wooden garden bench, from where you can observe the lake and the lower part of the garden.

few examples of the assortment of perennials around the house and the terrace



the fireplace nook

The fireplace is for both relax and work. The fireplace itself is embedded in the ground and the surface is a combination of compacted gravel and stepping stones. From one side it is lined with low stone wall, suitable for sitting, and from the other by perennial bed and a new woodshed. Behind the low stone wall we will find of the two little groves, which are in two opposite corners of the garden. The character of the space and the plantings used here corresponds with the garden surroundings and takes an amount of inspiration from the local nature. The complete assortment of plants is presented in the study portfolio.

new simple solid all-wooden picket fence and the gates surrounding the garden



perspective view at the fireplace nook and side entry from the working shed