

LIBRARY IN ASPERN

OLGA SAPRYNSKYA | ATZBP | 2021/2022

FACULTY OF ARCHITECTURE CTU IN PRAGUE | STUDIO CIKÁN
STUDIO HEAD: DOC. ING. ARCH. MIROSLAV CIKÁN
ASSISTANT PROFESSOR: ING. ARCH. VOJTĚCH ERTL

BACKGROUND PROVIDED FROM WIEN 3420 ASPERN DEVELOPMENT AG

Aspern is a new district in the northeast of Vienna, which was originally home to the airport in the 20th century. On an area of 2.4 km², a self-sufficient district with a population exceeding 20,000 is to be created here. The district will contain all the functions necessary for life, like any independent city. It is interesting that the center of the district is formed by an artificial lake of the same name.

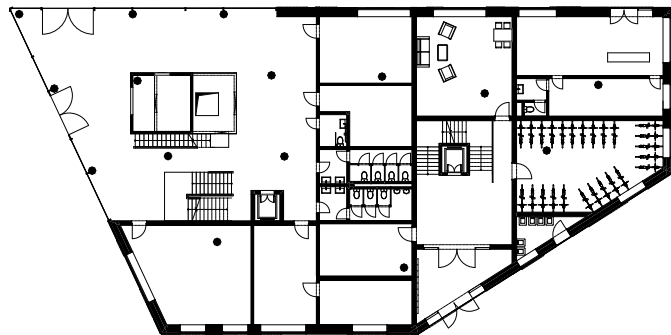




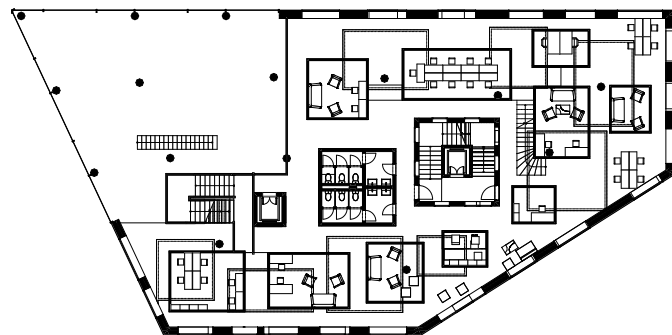
The plot is located in the northwest corner of block F10, which is located in the north of Aspern. The building, like the block itself in the north, is connected to the so-called „green string“- an alley that ends in the east on the future square by the lake. To the west, the building is on a street leading across a lake park to Seestadt Underground Station. The building is separated by a public pedestrian passage from the block, which consists of 4 buildings with a common private courtyard. Surrounding buildings include a kindergarten with a home for the elderly and apartment

On an irregular plot in the north of the block was designed a multifunctional six-storey building. The ground floor consists of two parts: western public and eastern private. In the western part there is an entrance hall for the library and offices, library facilities and a public press center. In the eastern part there is a private entrance for the inhabitants of the house. There are also social rooms. The second floor consists of public areas of the library and individual study rooms. The third floor consists of office space. The three upper floors are intended for living.

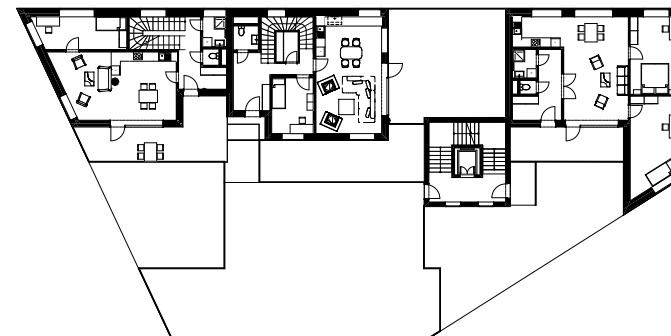




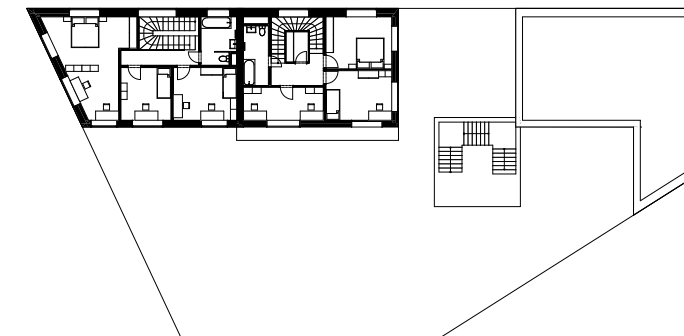
Ground floor



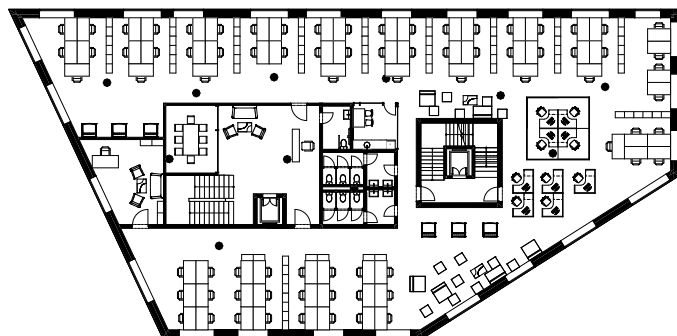
1 floor



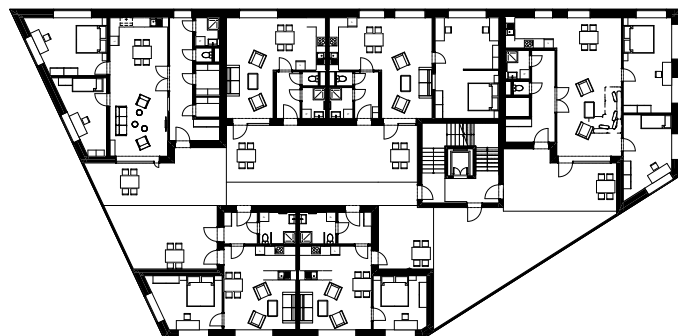
5 floor



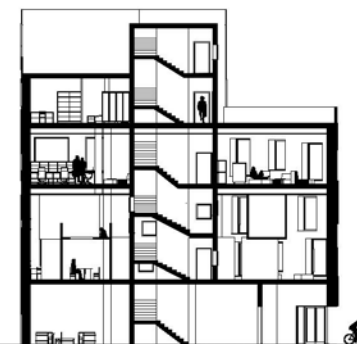
6 floor



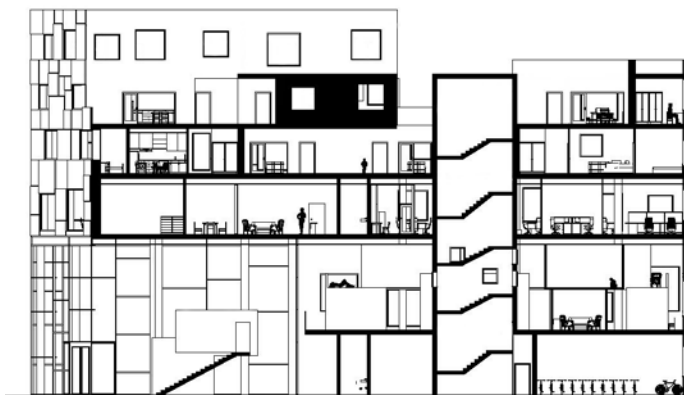
3 floor



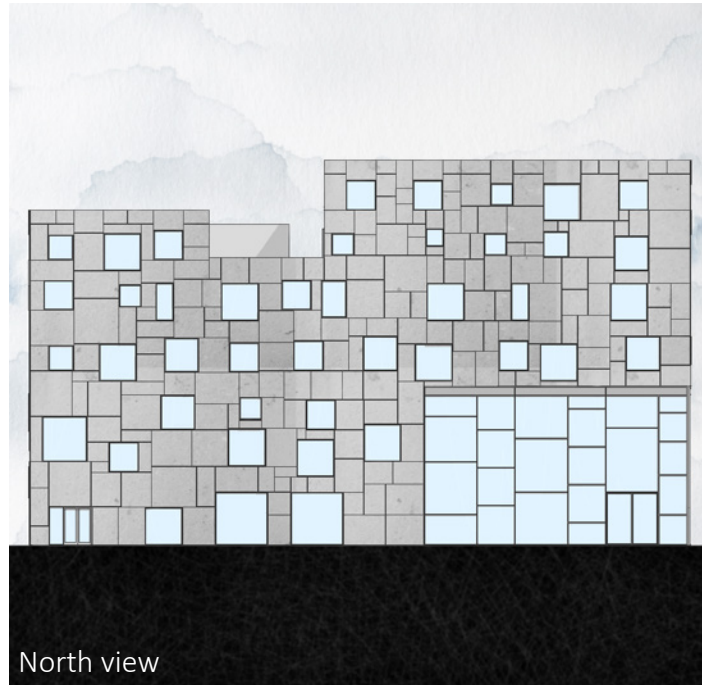
4 floor



Cross section



Longitudinal section



North view



Western view



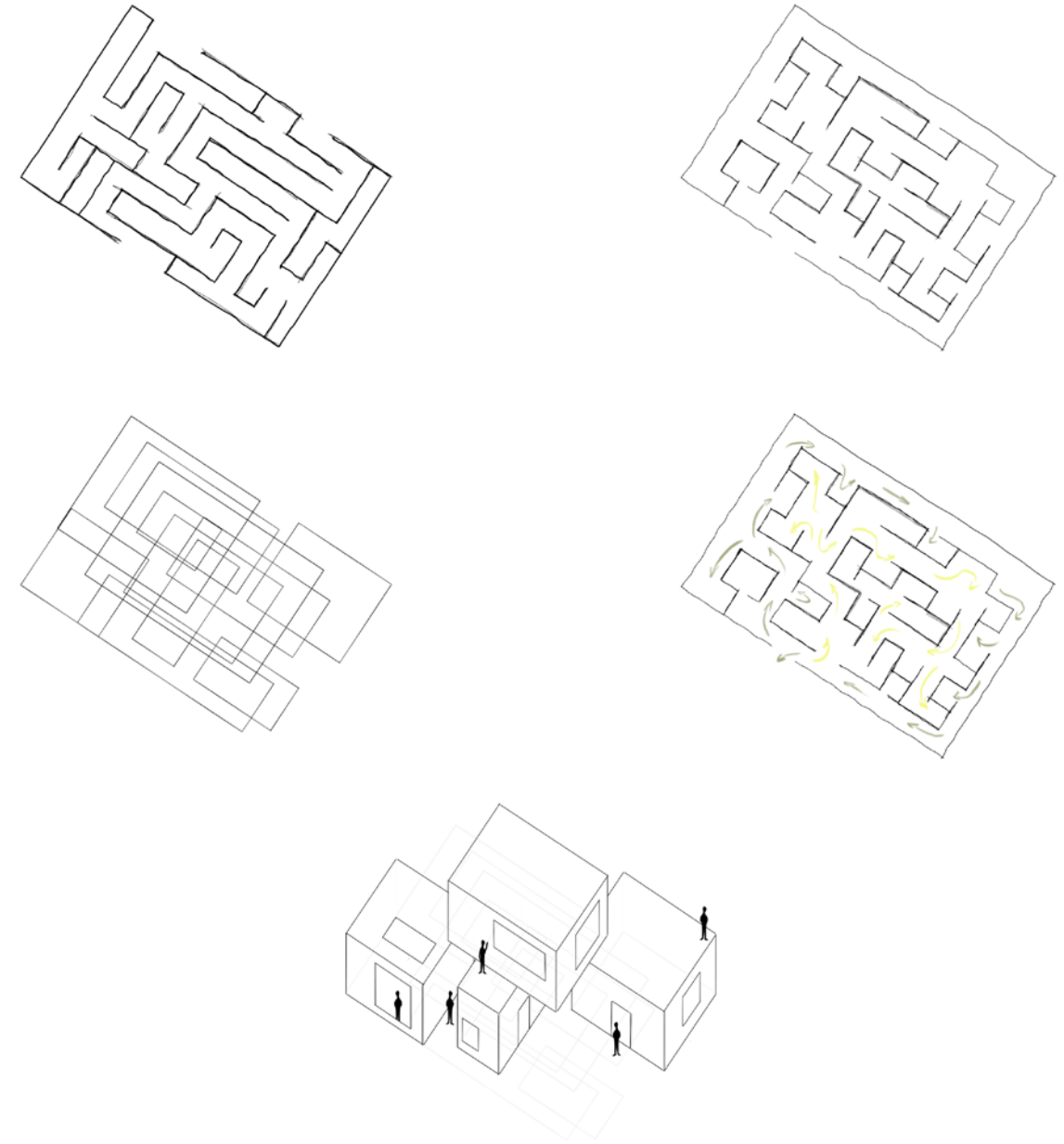
Southern view



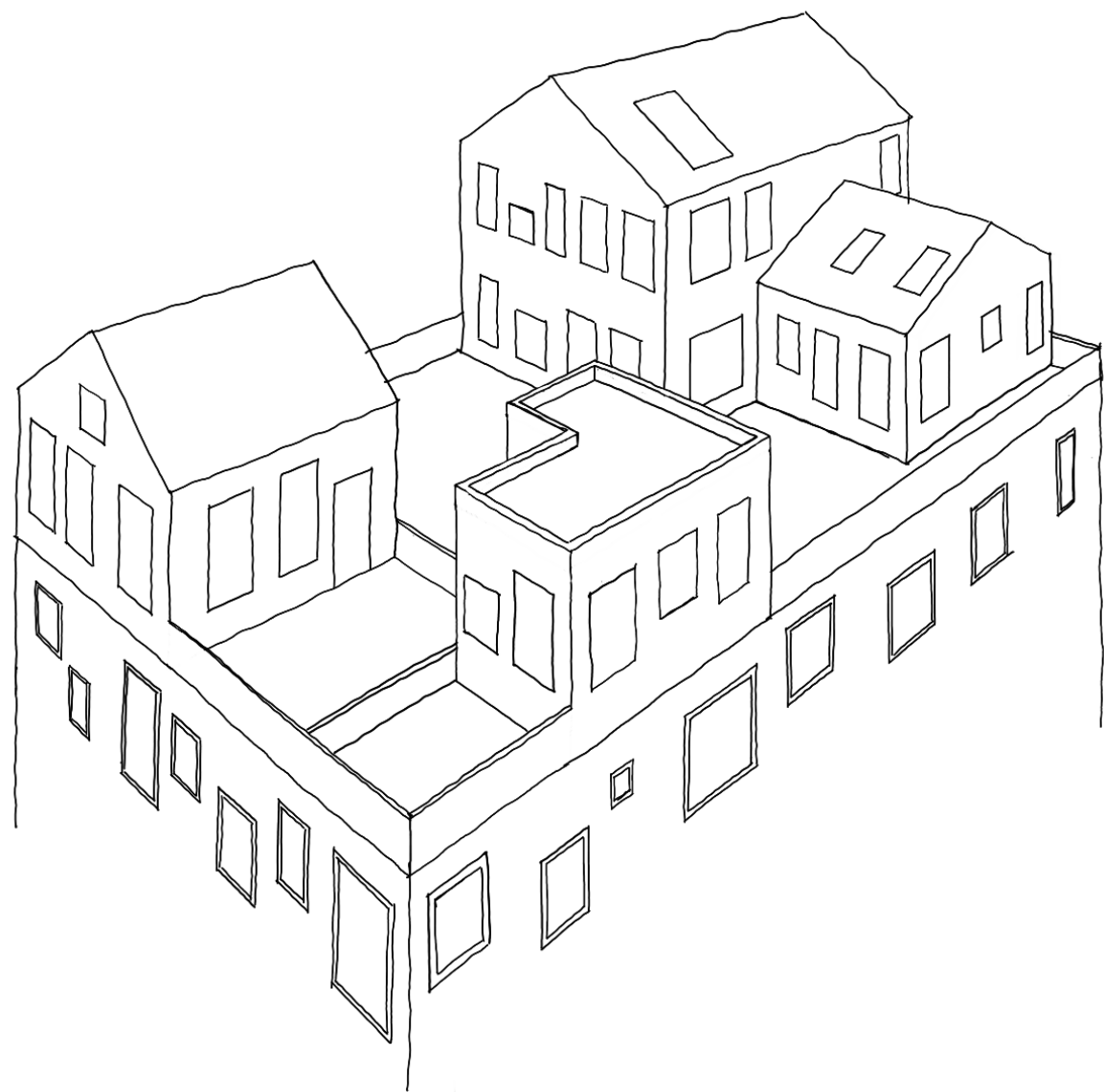
Eastern view



The concept of the library is based on the maze model. It is the opposite of libraries with large open study rooms. The study rooms are light wooden cells for 2-6 people and are thematically divided. In the floor space, they are placed on two different levels to create corridors in the form of a labyrinth. The social spaces are formed by the roofs of the cells in the first level, which are entered from the cells in the second level and from the spaces between the boxes. The boxes are interconnected and lit by non-glazed openings. The café in the lobby is designed in the same spirit.







Housing is conceived as family houses on the roof. These are two or one-storey apartments with their own garden, designed in the same concept of „cells“. The height gradation of the „houses“ from north to south was created to highlight the corners of the block. This also ensures that each of the apartments is well-lit and overlooks the lake and park in the center of Aspern.

