

CHATEAU VEESLAVÍN
ATELIER REHWALDT
Veleslavín, chateau Veleslavín
Karolina Suchá
[Project V.] LS 2020_2021



Location
History
Analysis
Documentation / Photos
SWOT
Concept
Site plan
Sketches
Plants
Materials
Section
Model

Location

Chateau Veleslavín is situated in the west Prague, it is part of Prague 6. Veleslavín used to be independent village, but in 1922 was connected to Prague. Location is situated near Šárecké údolí, also airport Václava Havla is close. Near the chateau is station connecting Prague with Kladno. Location is situated next to the old railway Buštěhradská which will be converted into green belt.

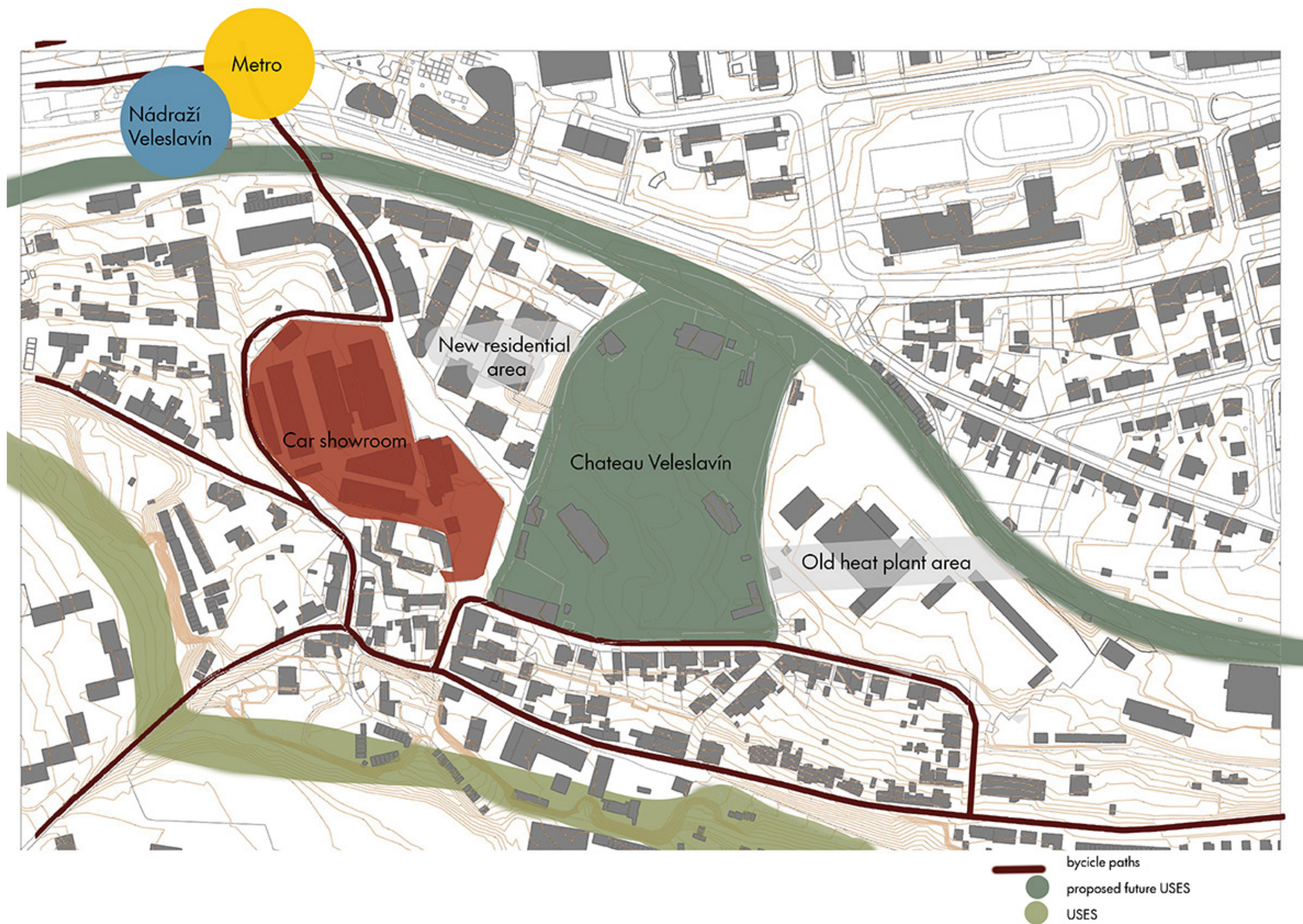


Location and wider connections

The centre of Veleslavín, where is also situated the Chateau has series of problems. Thanks to the car showrooms was the historical city centre removed and now Veleslavín doesn't have even a small shop, coffee or restaurant which could offer something to inhabitants. On the other side of the park is area of old heating plant which will be rebuild. Typical Veleslavín houses looks like small compact houses with inner backyard. Veleslavín itself has an impresion of a village. You doesn't feel like being close to the centre of Prague at all. Area is congested with traffic espetially from Evropská street.



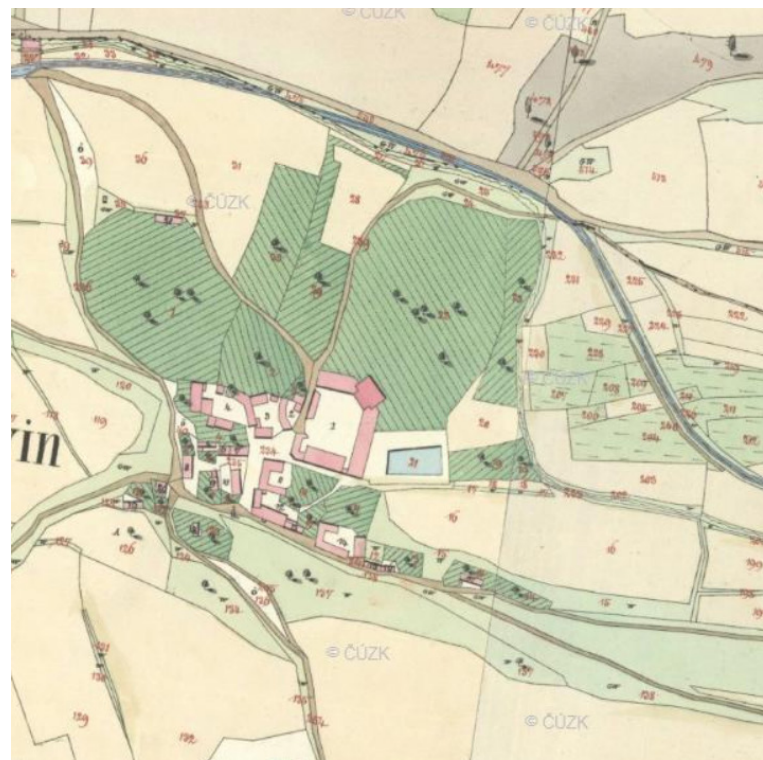
ČÚZK, 2021



History

From historical images, photographs and maps, we can estimate and study the development of the composition. The oldest document that we have at our disposal is the Stable Cadastre, which does not capture any composition, which, according to the interpretation of doc. Hauser means that at that time no composition was visible in the park. This is because by default, if there was any form of the composition, it was captured. But that doesn't mean she couldn't be here before. Unfortunately, we have no evidence of her. The oldest sources come from the time of the medical sanatorium, which was led by Mr. Kosák and Fischer. They studied Alzheimer's disease and both died in World War II in a concentration camp. Milena Jesenská and Charlotta Masaryková were also treated in the sanatorium. President Masaryk visited Charlotte here.

During the work on the project, many analytical documents were obtained or consulted with the association Hradní potok z. s. and its representative Veronika Zapletalová.



Stabilní katastr 1824-43 (Archiv ČÚZK, 2021)



Letecký snímek 1945 (Archiv ČÚZK, 2021)



roughly the way roads could have been led in the 1930s (Hradní potok z.s.)



Letecký snímek 1938 (Archiv ČÚZK, 2021)



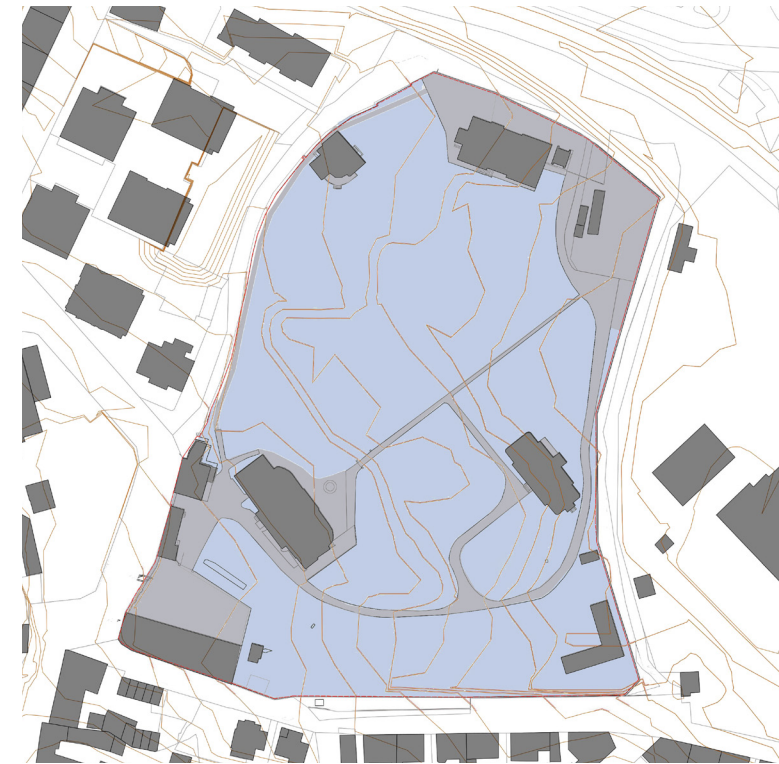
Letecký snímek 1953 (Archiv ČÚZK, 2021)



plan for the sanatorium project (Hradní potok z.s.)

Analysis

Analysis of site shows how I thought about park as a public space for the future and we can think how it will affect the rest of Veleslavín. Map of paved and non-paved areas shows us that majority of areas are not paved, which means they can absorb rain water. Then we have scheme showing in which areas is needed for the future to be accessible for the cars, even if there will not be parking included in all of the areas.



Paved vs. non paved areas



Public vs. Private



Where should be acces by cars if needed



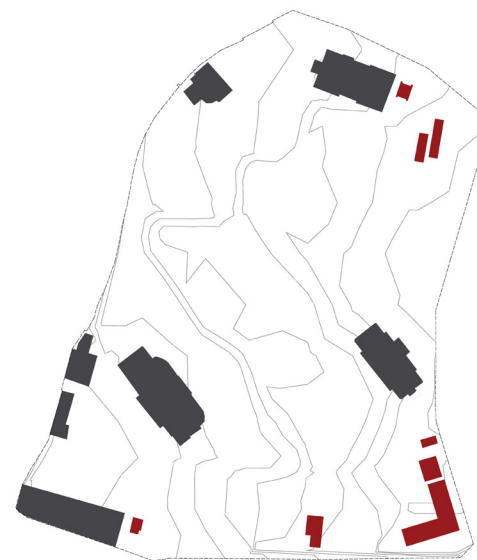
Points, lines, areas



Felling trees



Existing technical infrastructure



Demolition areas



After felling state

Documentation / Photos

Documentation of current state shows the situations of each elements. All building require reconstruction, the wall too. It is needed to bring life back to the park and specify functions of the buildings and areas.

All photographs documenting the conditions of the park were taken by the author of this document.







Plants

Veleslavin park has a huge number of mature trees of all kinds of species. We can find here old *Platanus acerifolia*, *Picea abies*, *Pinus strobus*, *Taxus baccata*, *Tilia cordata*, *Fagus silvatica* and so on, even fruit trees such as apple or pear trees. There are also some young ones such as *Magnolia*. We can find there a lot of perennials and undergrowth for example *Fragaria*, *Hedera helix*, *Vinca minor*, *Peonia suffruticosa*. All over the park we can find *Muscari*.



SWOT

S

extensive historical footprint and valuable architectural value, mature trees, active inhabitants of the place (Hradní potok z.s.)

W

poor condition of buildings, premises, surfaces, risk of collapse, lack of funds, missing investor

O

city support, state support

T

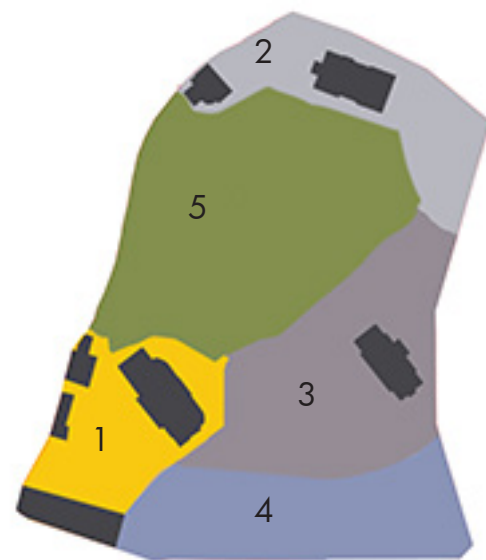
the complex will collapse before the plan begins to materialize

Concept



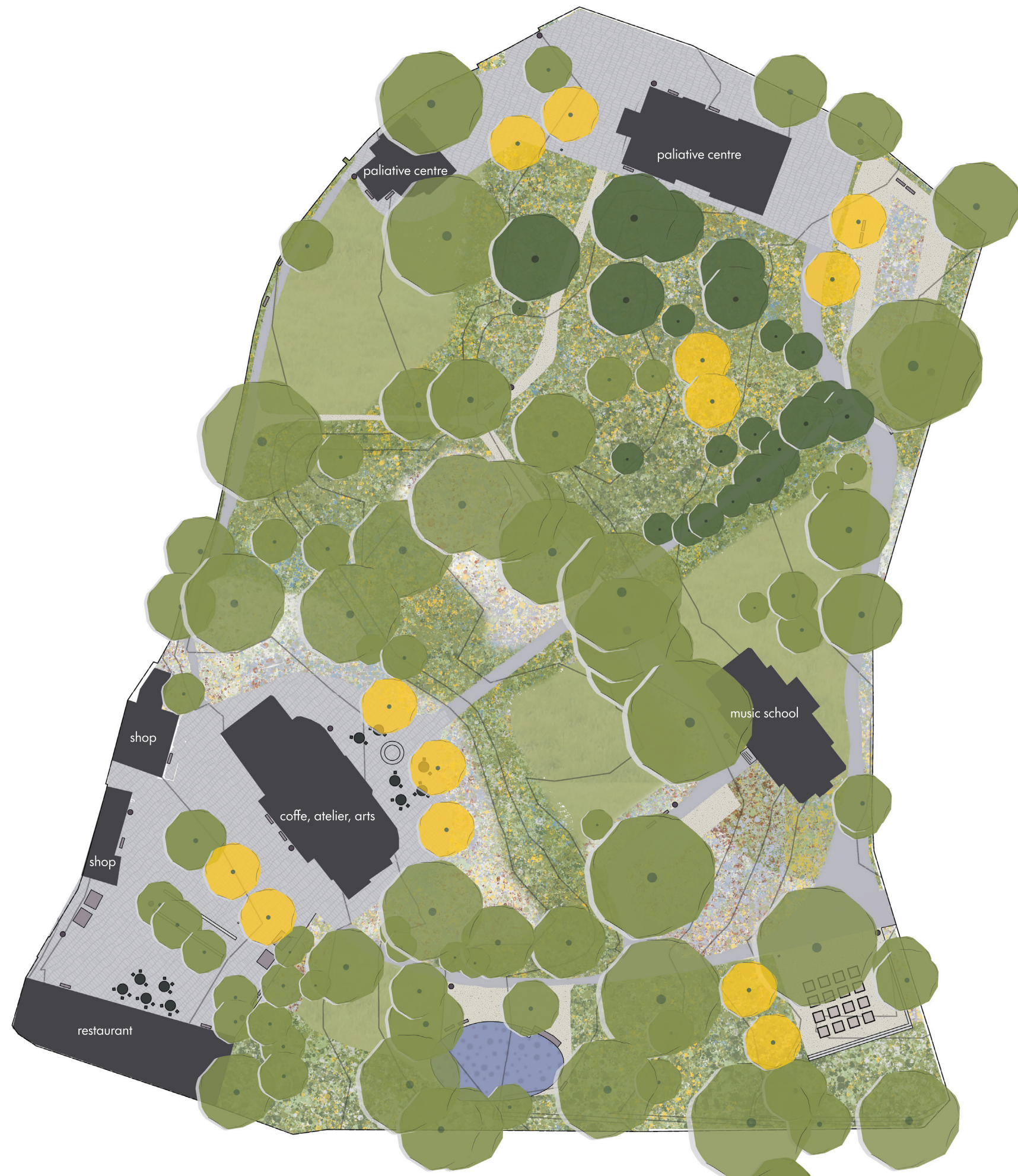
Site plan

As the first step should be renovated the most representative parts of the park. Then should come the apartment centre and the building for music school for economical reasons and after that should be renovated the rest of the area.



Stages of project





Sketches



Sketches

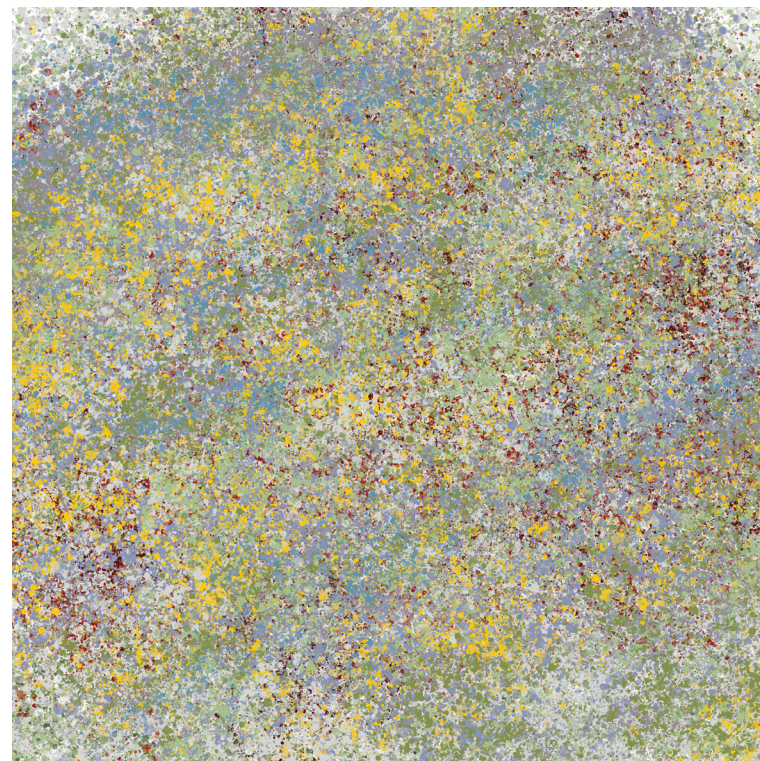
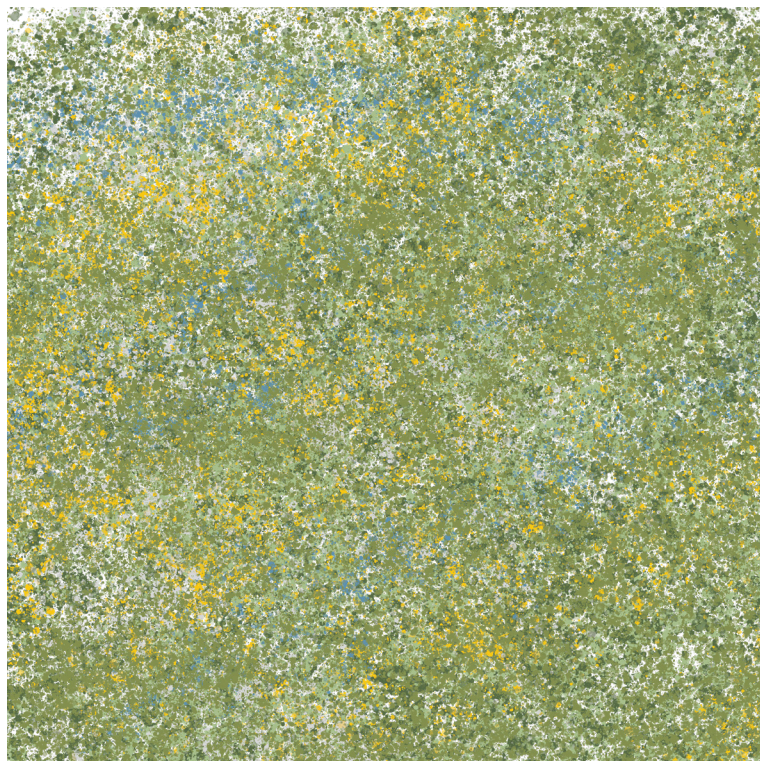
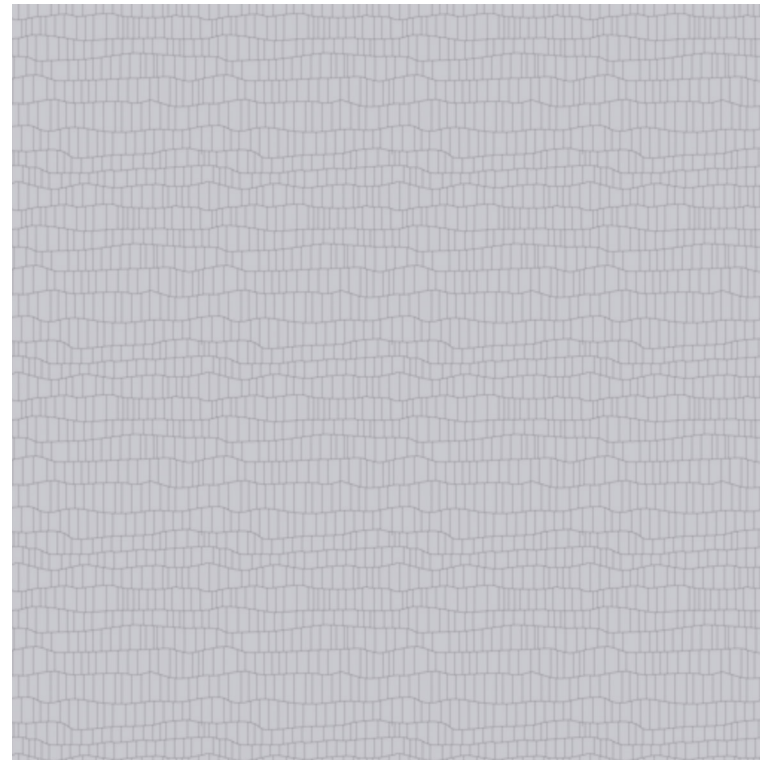


Sketches



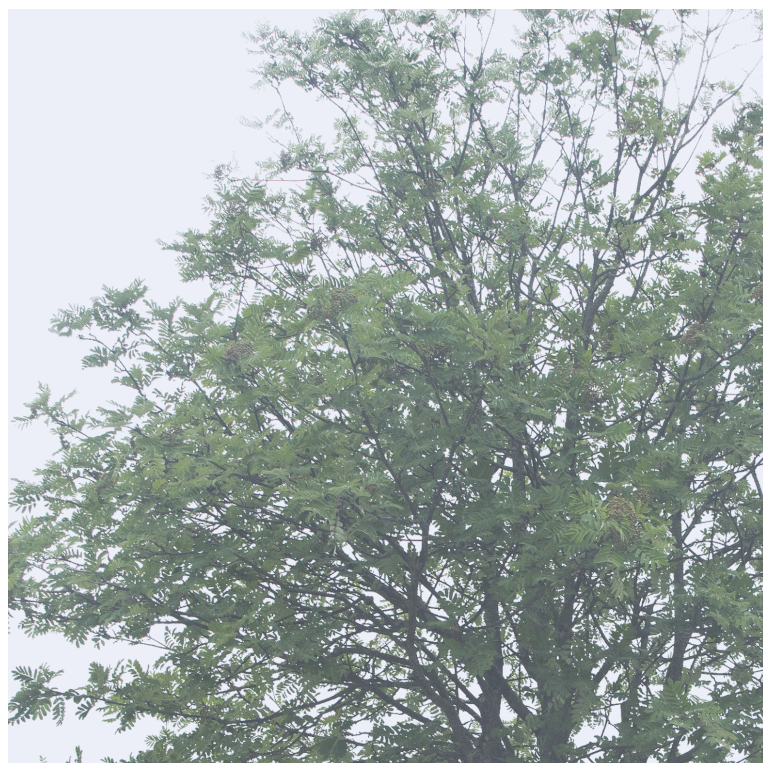
Materials

The materials shown are gravel, asphalt, stone paving, lawn, shrubs, perennial undergrowth. Asphalt will only be where it still serves its purposes. It will be gradually replaced until it is no longer functional.



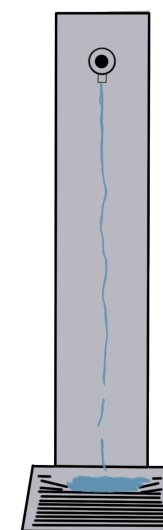
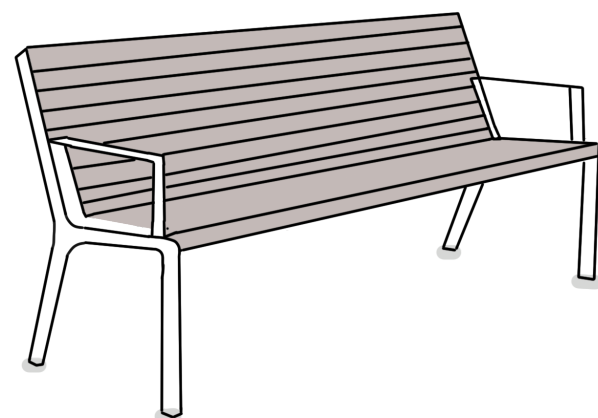
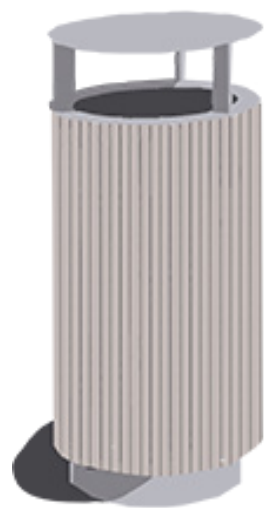
Plants

The most important are the current mature trees which need adequate care, brach out and treat. New generation for future decades can refer to the times of old sanatorium. As traditional can be used *Tilia platyphyllos*, *Sorbus aucuparia* or *Acer campestre*. For the perennials it can be *Waldsteinia ternata*, *Vinca minor*, *Brunnera macrophylla* and many more.

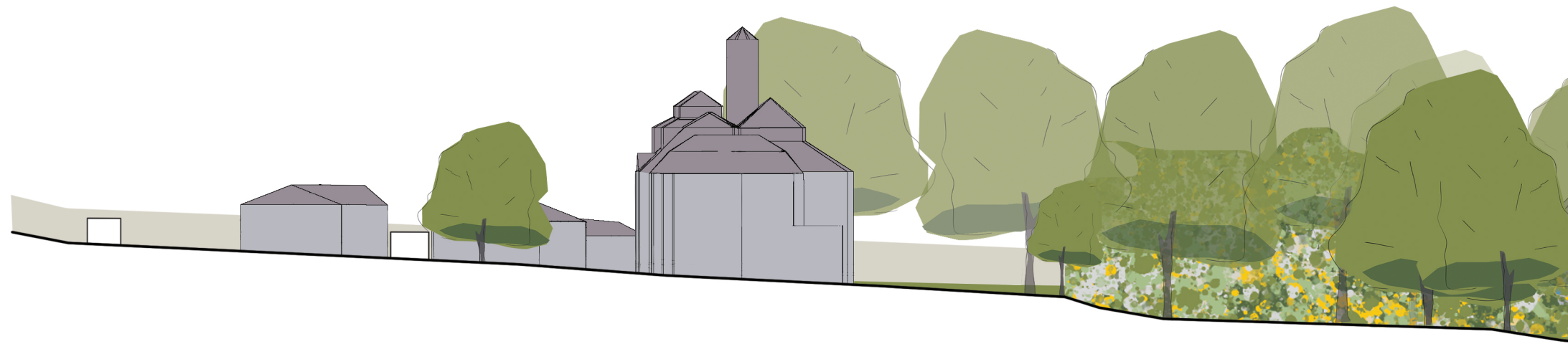


Details

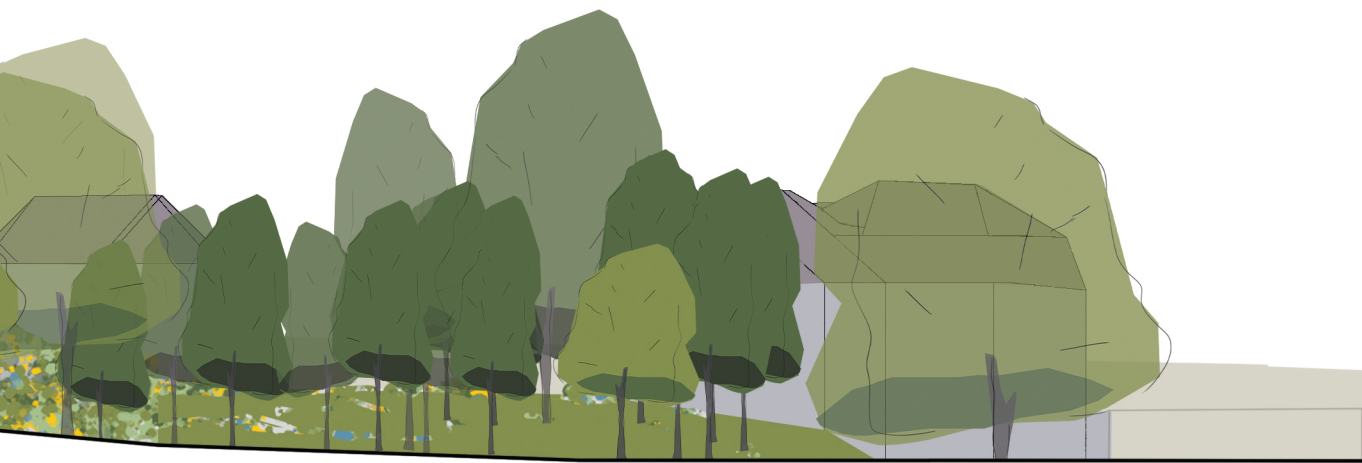
The functional elements in the park are missing and could look like this. The new furniture will be minimalist and will clearly show with its design the period to which it belongs. It is a wooden bench, prague chair and coffee table, bicycle stands, bin, drinking fountain.



Section

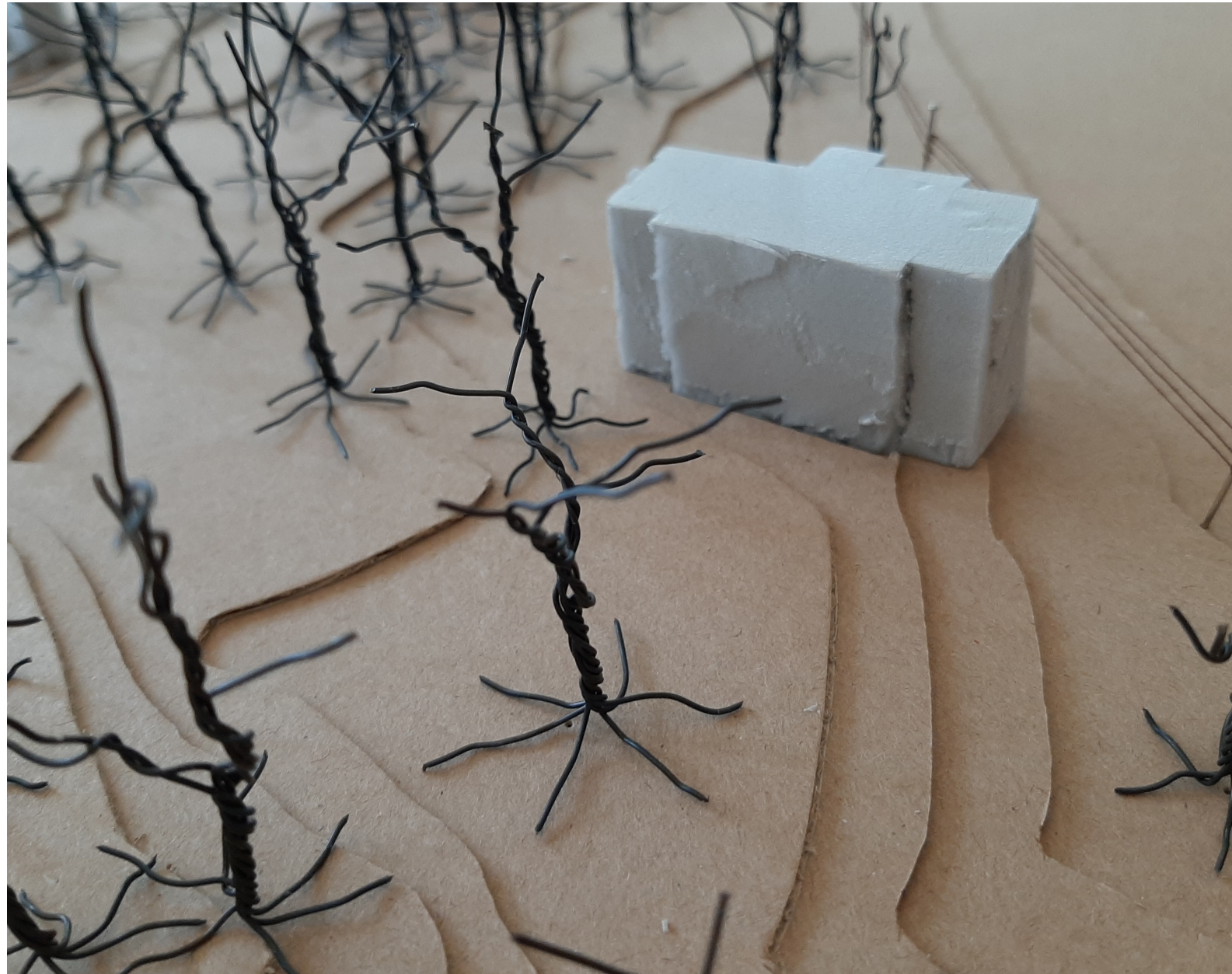


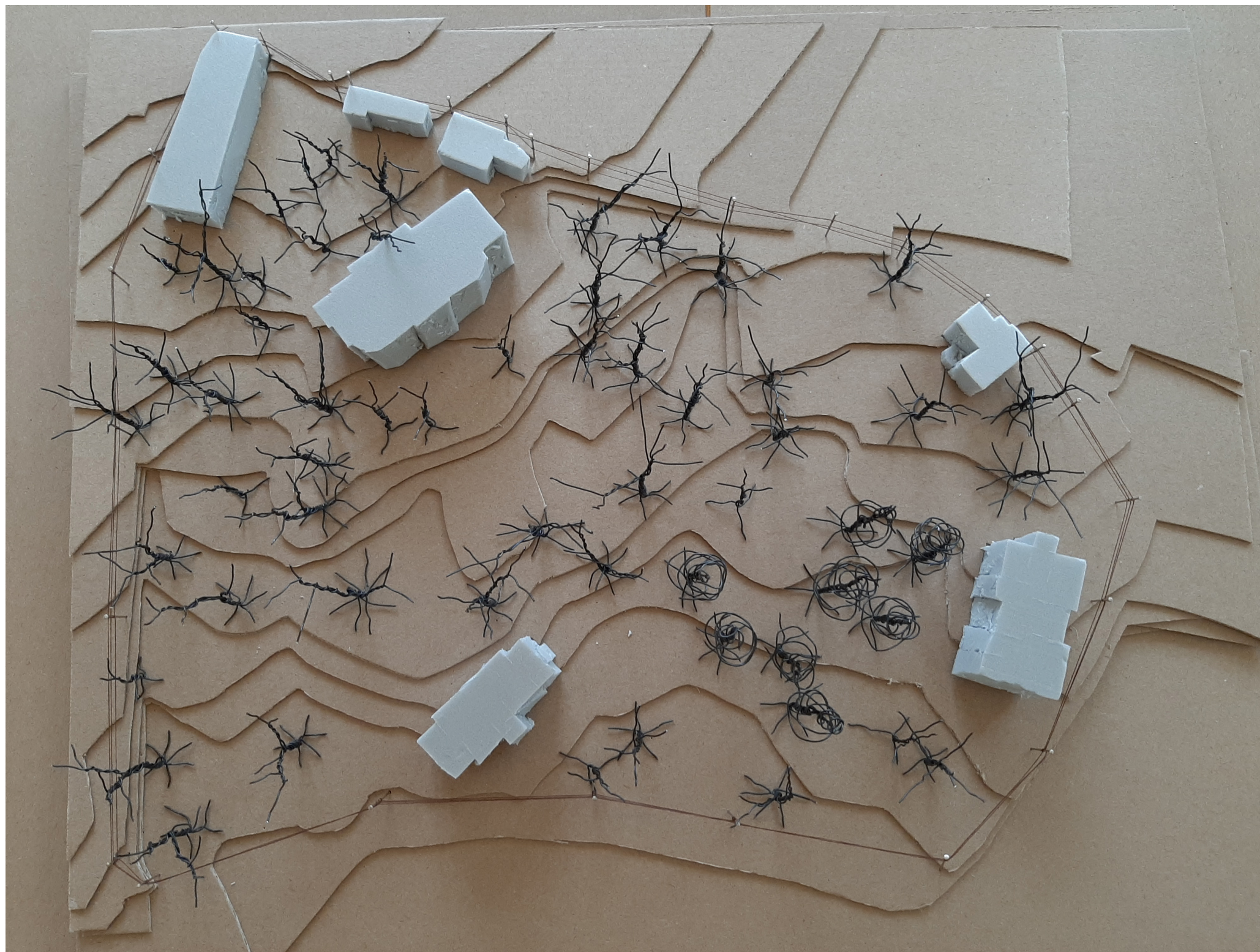
A



A'

Model





Sources

IPR; 2021; Institut plánování a rozvoje hl. m. Prahy. Institut plánování a rozvoje hl. m. Prahy [online]. Dostupné z: <https://www.iprpraha.cz/>

Geoportál; 2021; Úvod | Geoportál hl. m. Prahy. Úvod | Geoportál hl. m. Prahy [online]. Dostupné z: <https://www.geoportalpraha.cz/>

Spolek Hradní potok z.s.; 2021; Zámek Veveslavín. Zámek Veveslavín [online]. Dostupné z: <https://www.zamekveveslavin.cz/>

mmcité městský mobiliář | mmcité. mmcité městský mobiliář | mmcité [online]. Dostupné z: <https://www.mmcite.com/>

Archiv. Document Moved [online]; ČÚZK; 2021; Dostupné z: https://ags.cuzk.cz/archiv/?fbclid=I-wAR3dO0iq5Xuyc0wysn64RVlyEwOSZgXK2oGW6LyWD_SkLlndEO5nzxR7Gfw

ČÚZK; 2021; Geoprohlížeč. Document Moved [online]; 2021 Dostupné z: <https://ags.cuzk.cz/geo-prohlizec/>

