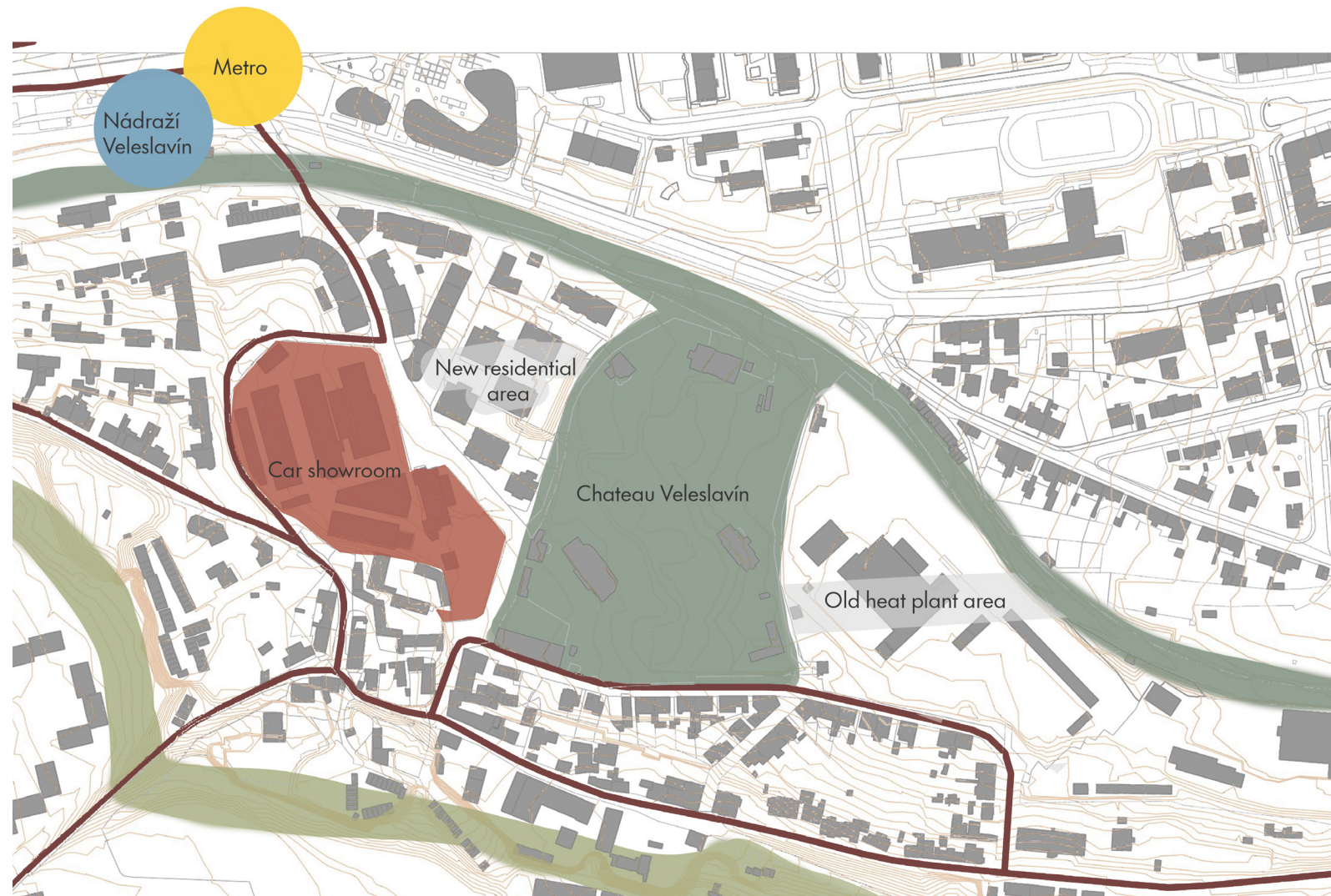
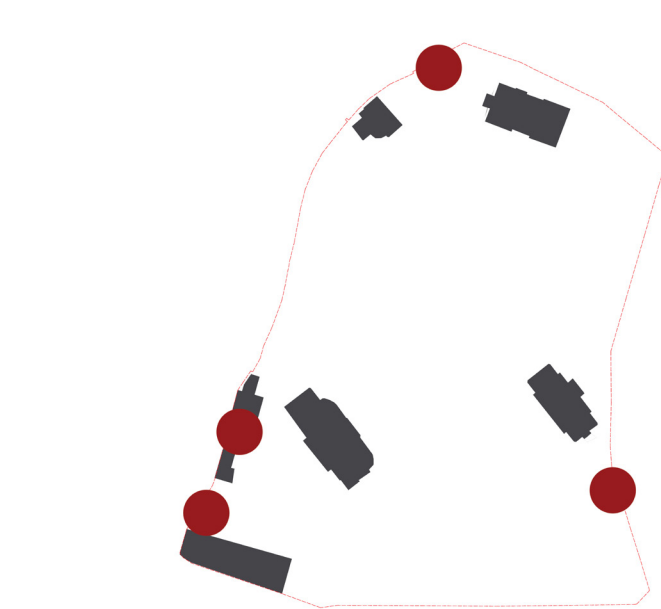




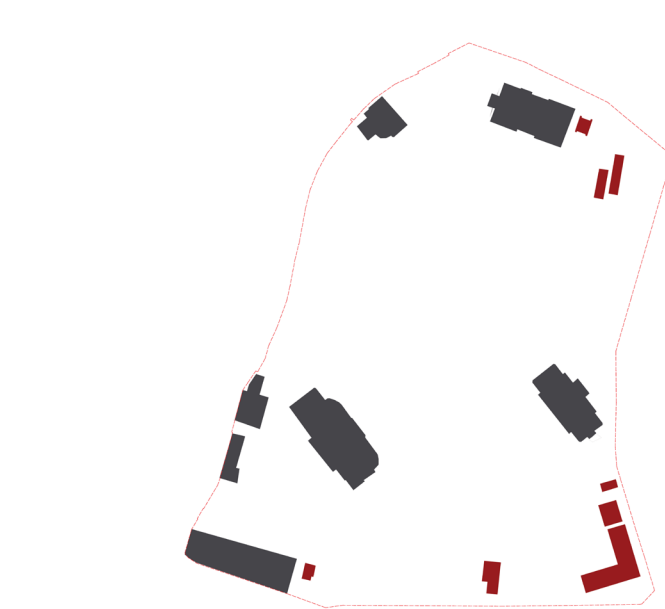
Veleslavín



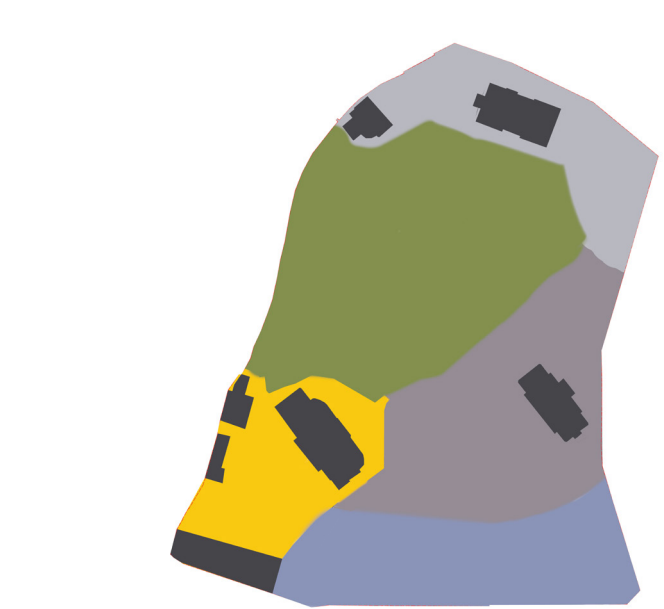
Wide connections



Entrances



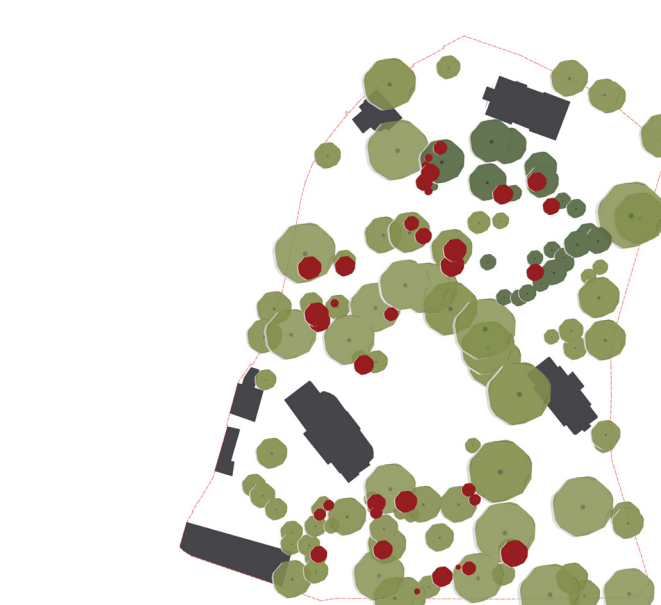
Demolition areas



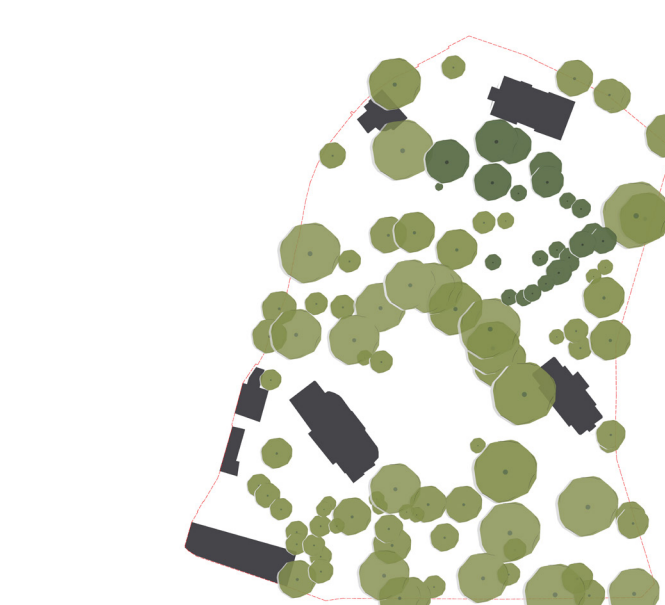
Stages of project



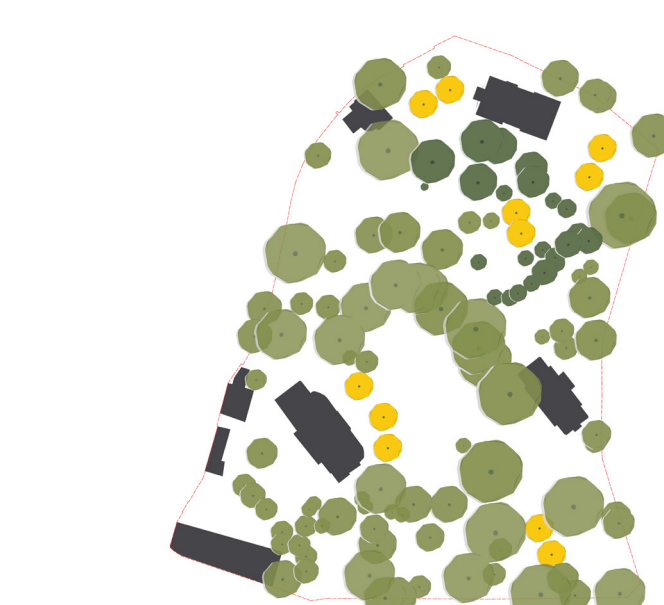
Public vs. private spaces



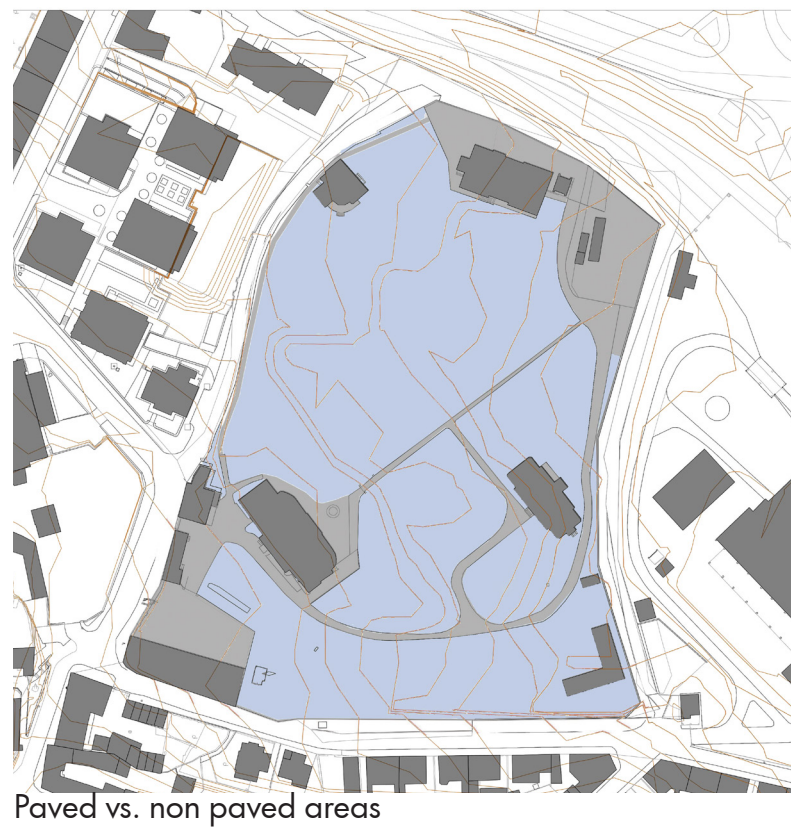
Felling trees



After felling state



New planted trees



Paved vs. non paved areas



Chateau Veleslavín is situated in the west Prague, it is part of Prague 6. Veleslavín used to be independent village, but in 1922 was connected to Prague. Location is situated near Šárčské údolí, also airport Václava Havla is close. Near the chateau is station connecting Prague with Kladno. Location is situated next to the old railway Buřetovská which will be converted into green belt.

The centre of Veleslavín, where is also situated the Chateau has series of problems. Thanks to the car showrooms was the historical city centre removed and now Veleslavín doesn't have even a small shop, coffee or restaurant which could offer something to inhabitants. On the other side of the park is area of old heating plant which will be rebuilt. Typical Veleslavín houses looks like small compact houses with inner backyard. Veleslavín itself has an impression of a village. You doesn't feel like being close to the centre of Prague at all. Area is congested with traffic especially from Evropská street.

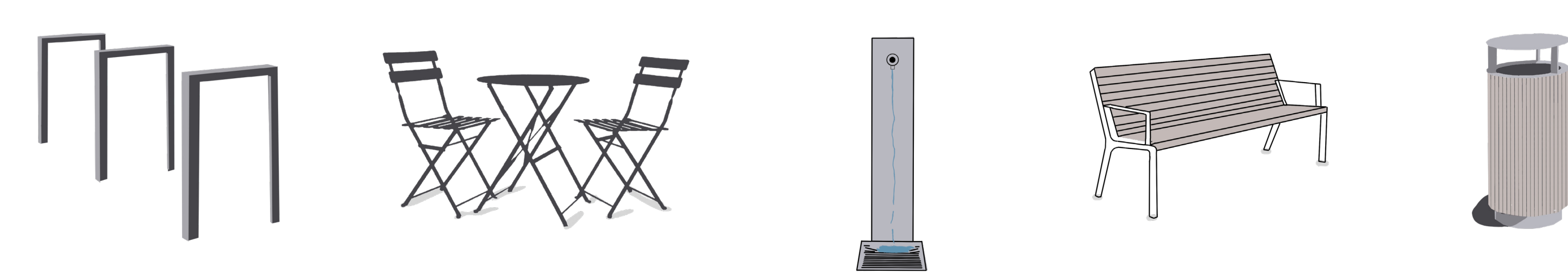
Veleslavín park has a huge number of mature trees of all kinds of species. We can find here old Platanus acerifolia, Picea abies, Pinus strobus, Pinus baccata, Tilia cordata, Fagus sylvatica and so on, even fruit trees such as apple or pear trees. There are also some young ones such as Magnolia. We can find there a lot of perennials and undergrowth for example Fragaria, Hedera helix, Vinca minor, Peonia suffruticosa. All over the park we can find Muscari.

Walking through the park we can imagine how it was composed, we can see the terrace on the level of chateau, wall made of stone, which now seems like a giant alley, because if they were cut in the past into the walls, they are no longer cut. We can see hint of a Platanus tree line.

As the first step should be renovated the most representative parts of the park. Then should come the palliative centre and the building for music school for economical reasons and after that should be renovated the rest of the area.

The most important are the current mature trees which need adequate care, brach out and treat. New generation for future decades can refer to the times of old sanatorium. As traditional can be used Tilia platyphyllos, Sorbus aucuparia or Acer campestre. For the perennials it can be Waldsteinia ternata, Vinca minor, Brunnera macrophylla and many more.

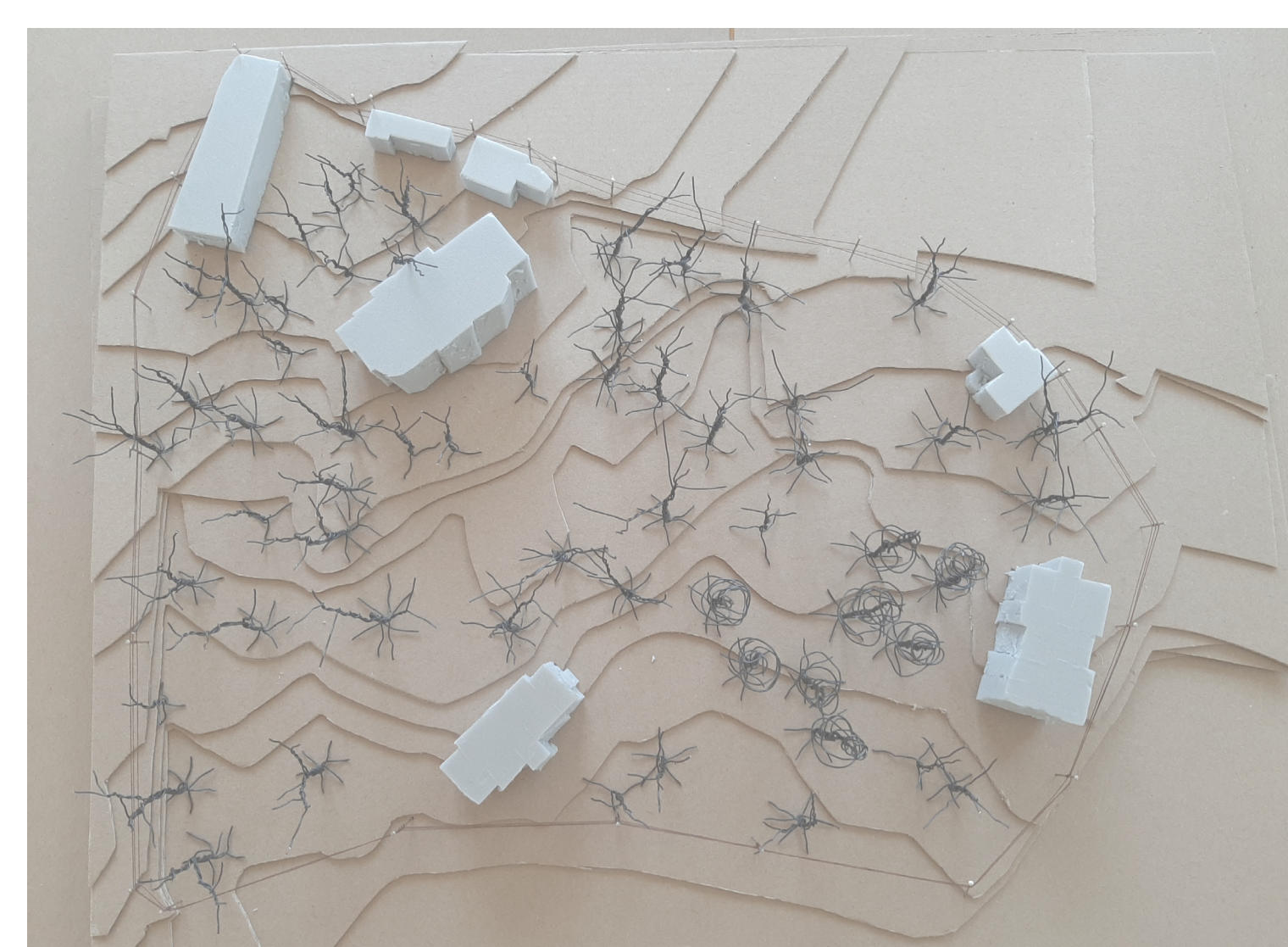
The functional elements in the park are missing. Proposed furniture are below. The new furniture will be minimalist and will clearly show with its design the period to which it belongs. It is a wooden bench, Prague chair and coffee table, bicycle stands, bin, drinking fountain.



bicycle stands, Prague chair and coffee table, drinking fountain, wooden bench, bin



Peonia suffruticosa, Waldsteinia ternata and other perennials, than annuul, Tilia platyphyllos, Sorbus aucuparia, Acer campestre



Model

