

BIBLIOTEKASPERN

ROMAN TOTUŠEK | ATZBP | 2021/2022

FACULTY OF ARCHITECTURE CTU IN PRAGUE | STUDIO CIKÁN
STUDIO HEAD: DOC. ING. ARCH. MIROSLAV CIKÁN
ASSISTANT PROFESSOR: ING. ARCH. VOJTĚCH ERTL

BACKGROUND PROVIDED FROM WIEN 3420 ASPERN DEVELOPMENT AG



To live together. To know my neighbours. Residency focusing on views, communication and community. Public, yet private. Both library on the ground floor and residential area manifesting the essence of the building.

Thanks to the building's U-layout, life in the courtyard is naturally isolated from the main road becomes private. Courtyard can serve as an auditorium with stair seating. Therefore, it contrasts with live street and the brewery. Sliding shelves allow the library area to become a stage.

Life, communication, confrontation.

Offering a variety of areas is another key value. An opportunity to be alone as well as a part of community.

The library being 1,5 meter inground allows the courtyard to be different in height yet maintaining unitary area. Inside the library, which consists of two floors, it is possible to work alone or in a group, to take a rest, to spend time with friends or to burn the midnight oil in the Dionysus barrel but especially – to be a part of a community.

The apartment building complies to the key values thanks to the residential porches and common terraces, offering a variety of private and public areas. The variety gives a possibility of being a part of a community. The variety encouraging the person to stop by before they close the door to their apartment.



- 1 / LIBRARY / APARTMENT HOUSE
- 2 / SCOUTING INSTITUTE / APARTMENT HOUSE
- 3 / SUSTAINABLE FASHION SHOP
- 4 / GYM / APARTMENT HOUSE
- 5 / BREWERY / HOTEL





SOUTH-EAST ELEVATION
1:500



NORTH-EAST ELEVATION
1:500

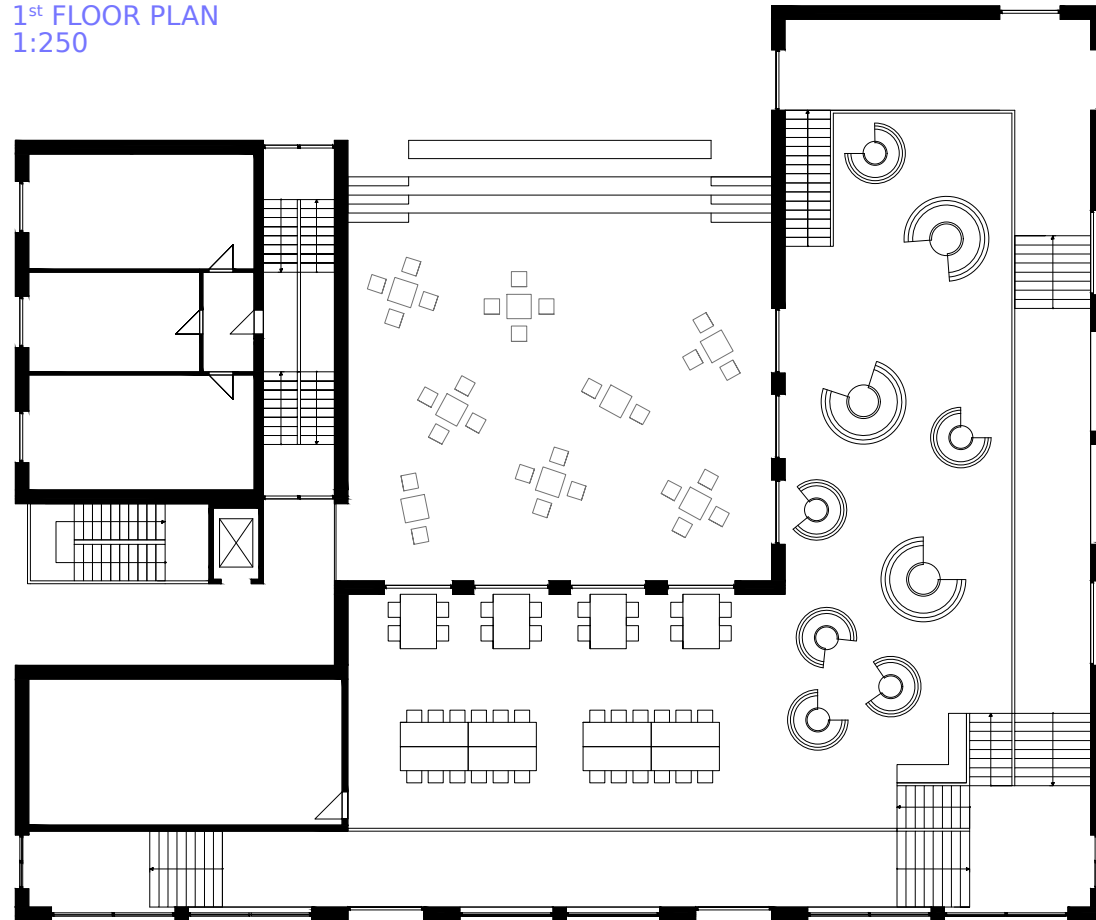


SOUTH-WEST ELEVATION
1:500

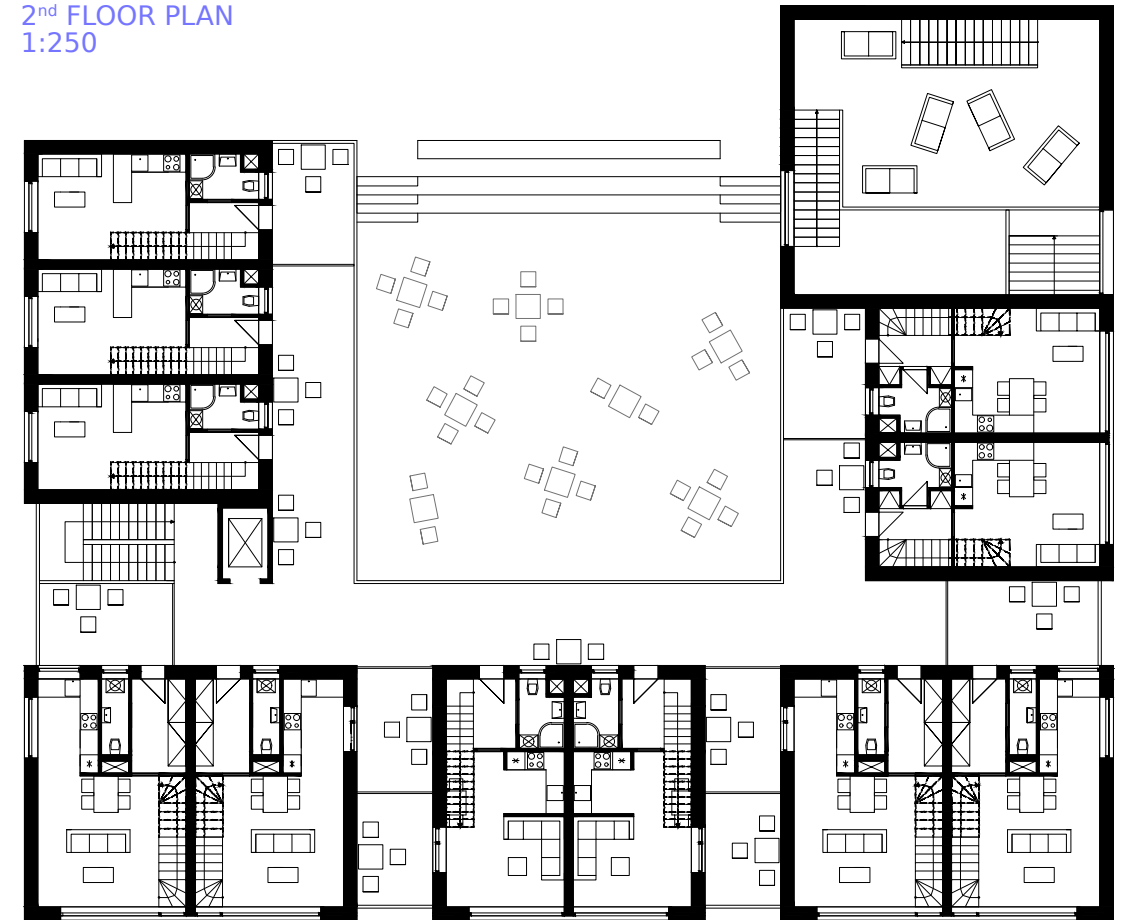


NORTH-WEST ELEVATION
1:500

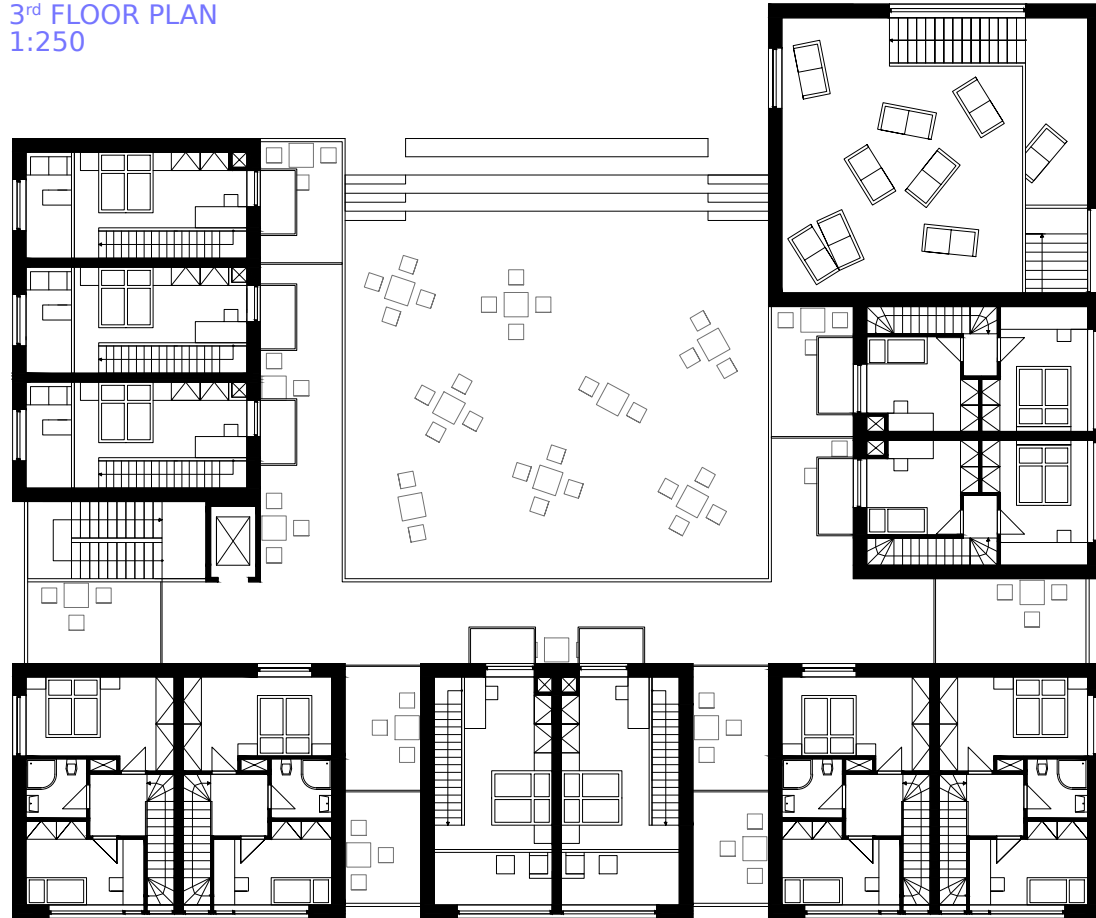
1st FLOOR PLAN
1:250



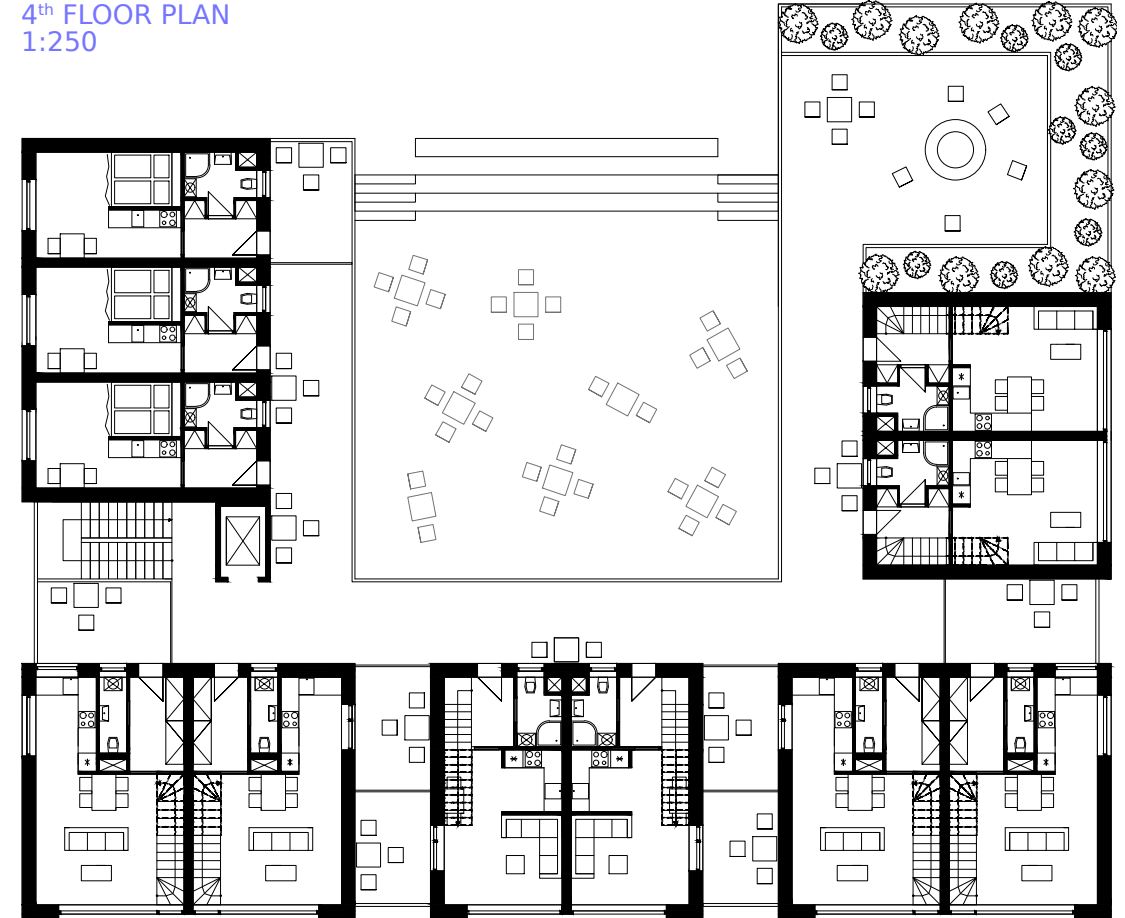
2nd FLOOR PLAN
1:250



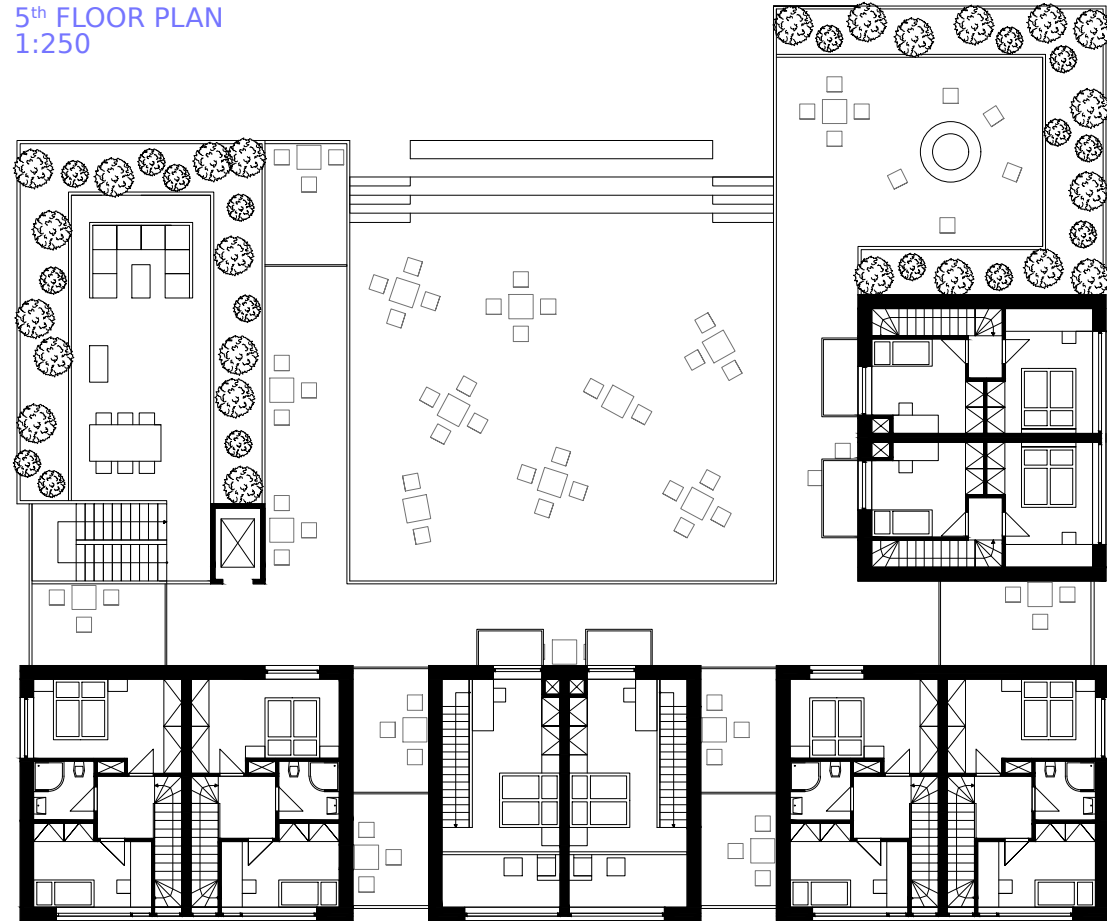
3rd FLOOR PLAN
1:250



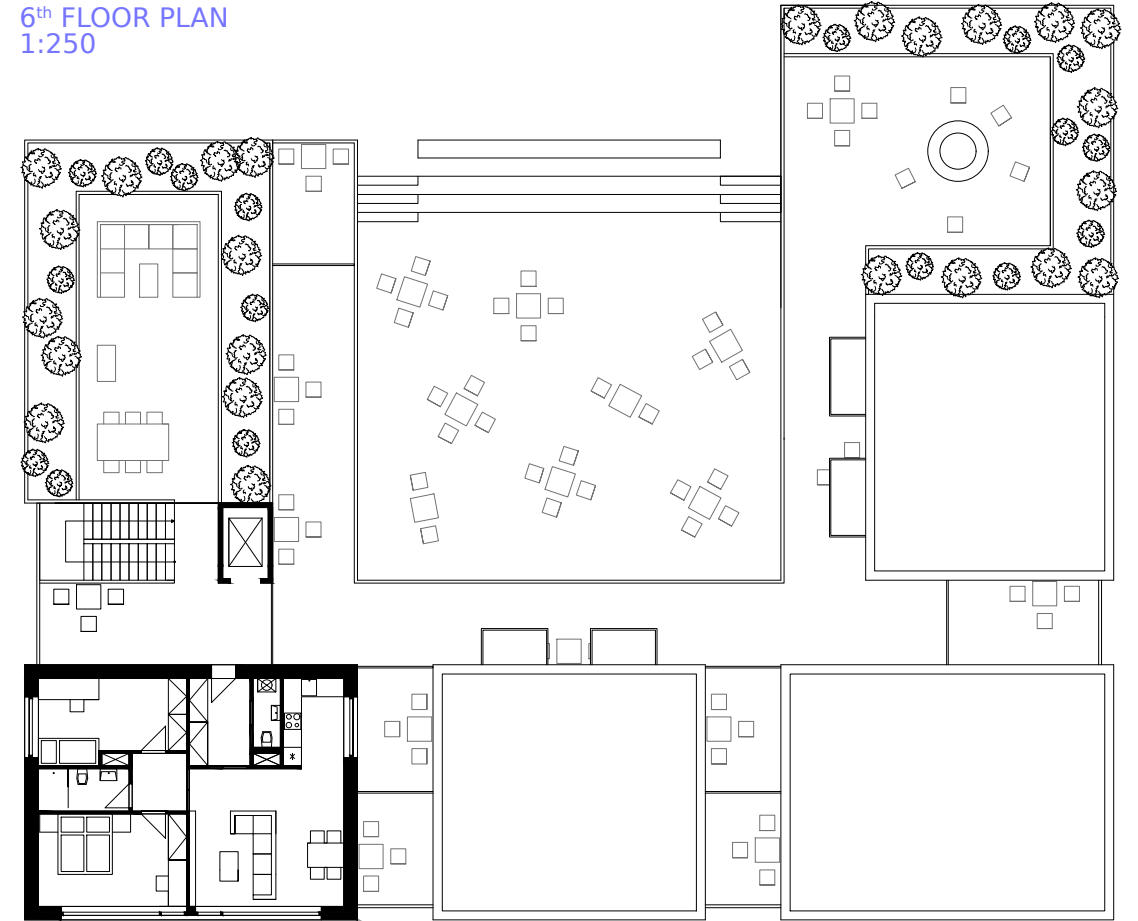
4th FLOOR PLAN
1:250

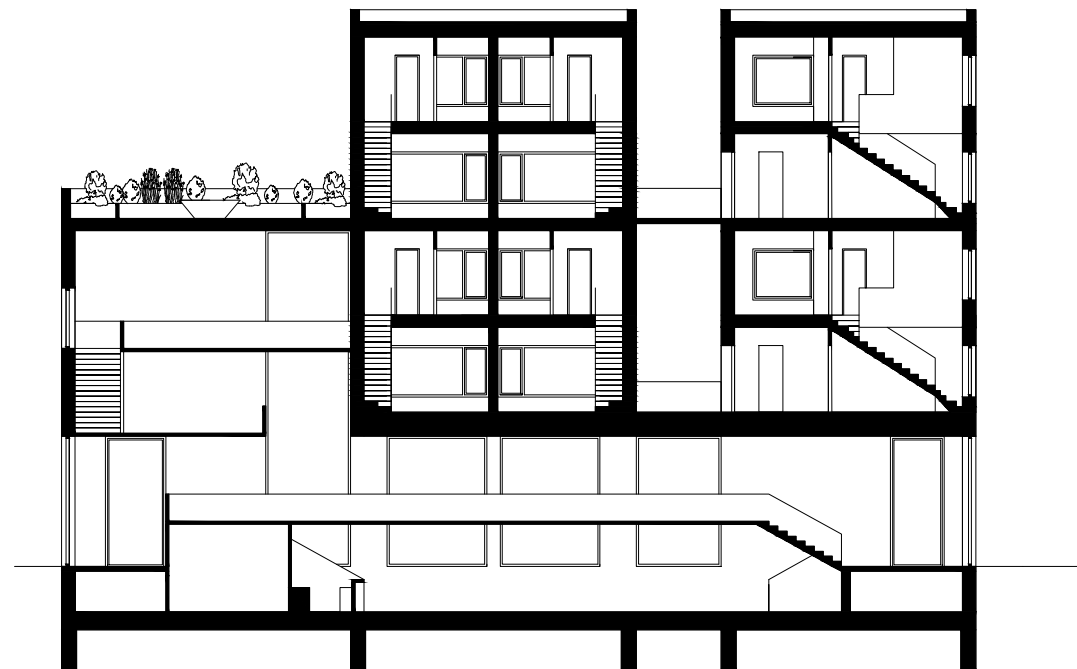


5th FLOOR PLAN
1:250



6th FLOOR PLAN
1:250



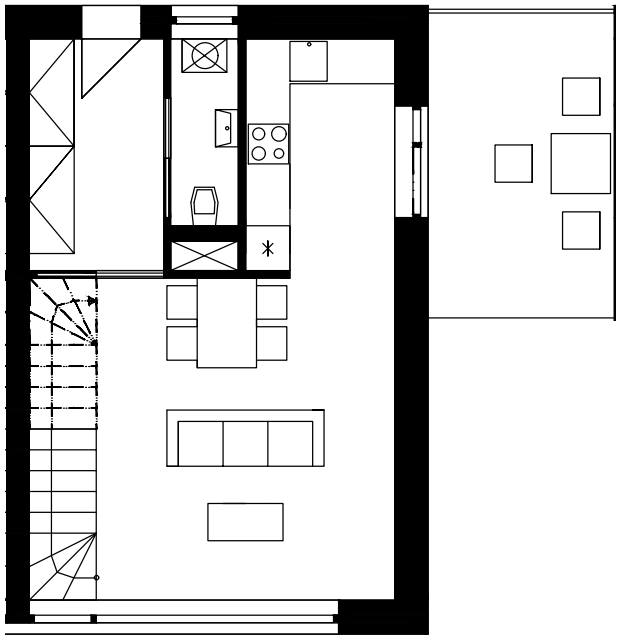


PERPENDICULAR SECTION
1:250



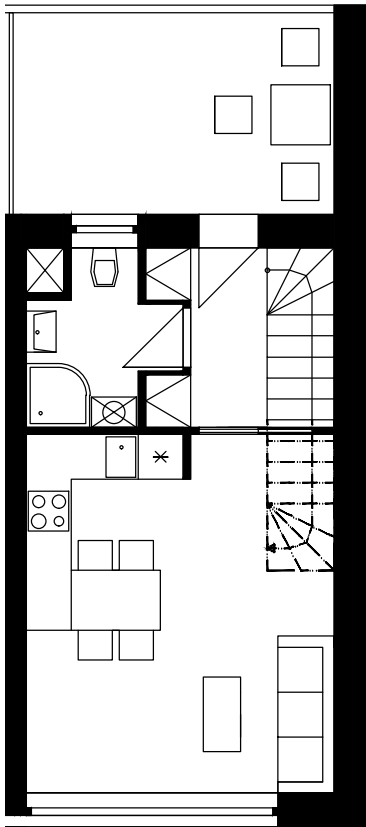
LONGITUDINAL SECTION
1:250

MAISONETTE APARTMENT TYPE A (70m²)



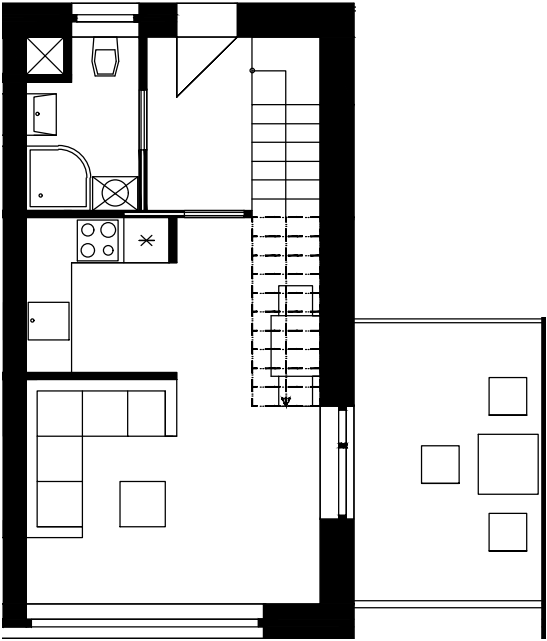
1:100

MAISONETTE APARTMENT TYPE B (60m²)



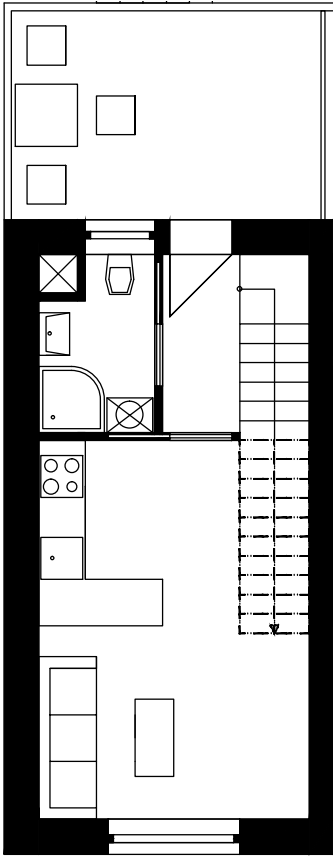
1:100

MAISONETTE APARTMENT TYPE C (57m²)



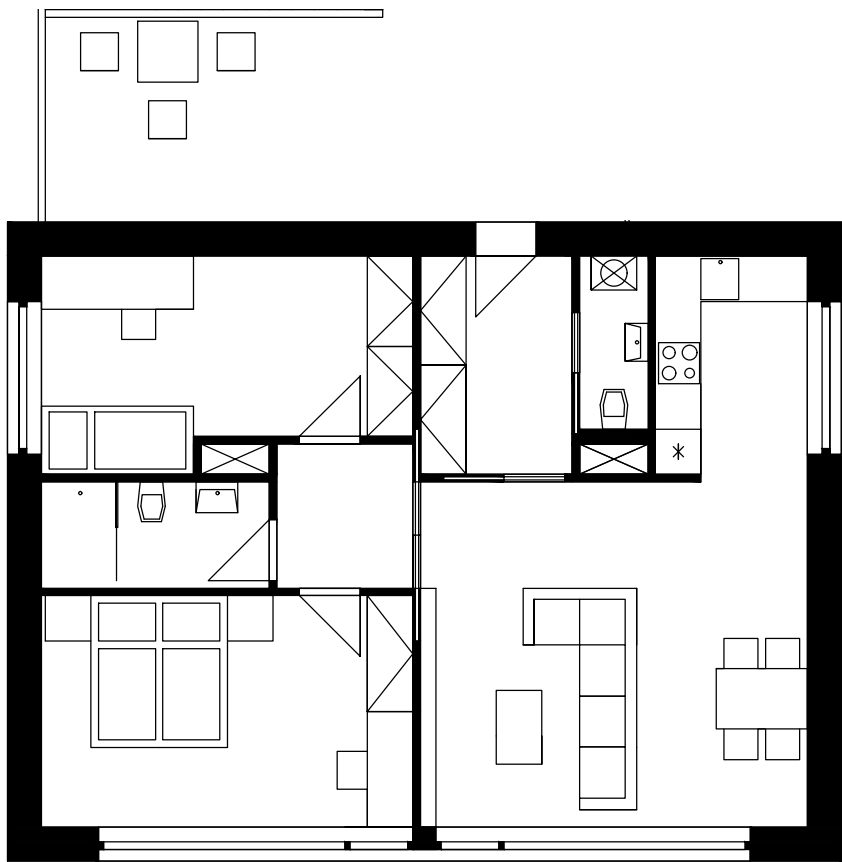
1:100

MAISONETTE APARTMENT TYPE D (50m²)



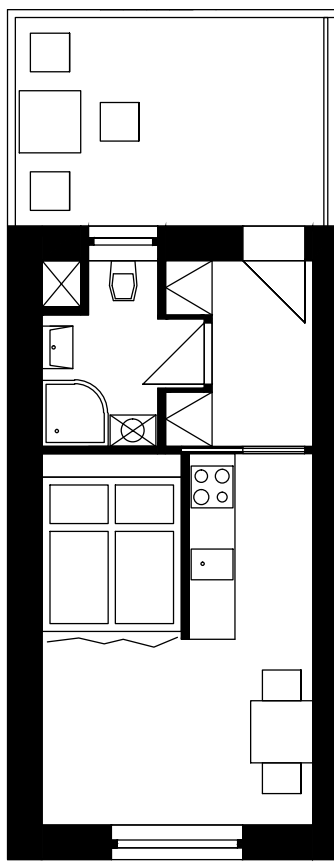
1:100

APARTMENT TYPE A (75m²)



1:100

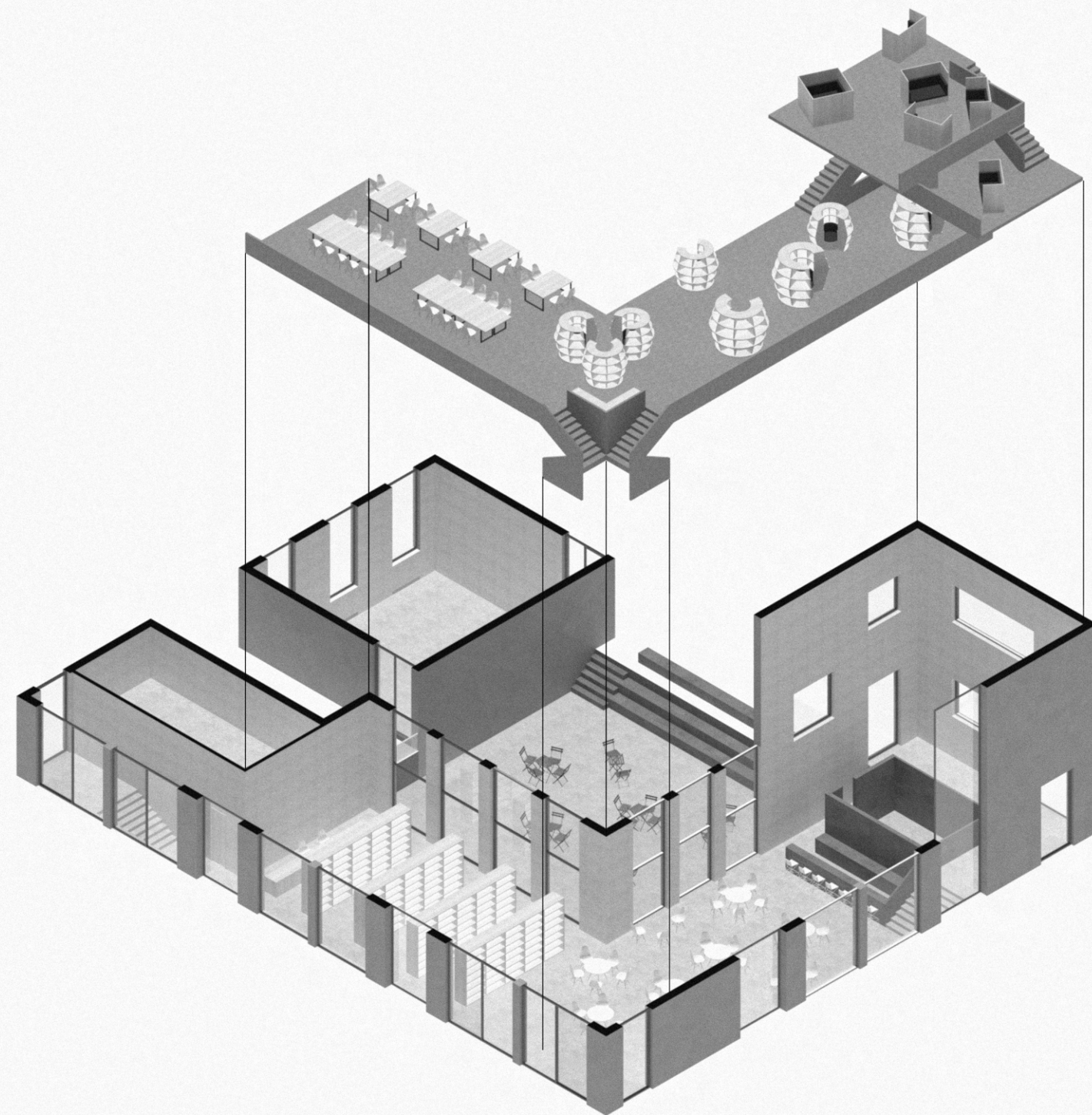
APARTMENT TYPE B (25m²)



1:100

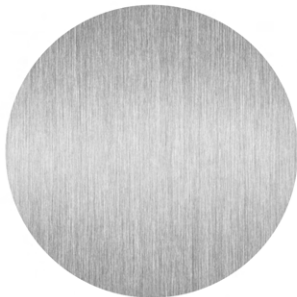




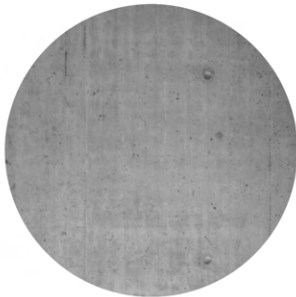


MATERIALITY

ALUMINIUM



CONCRETE



STUCCO



NETTO - 2049m²
BRUTTO - 2732m²
BUILT UP AREA - 773m²
NUMBER OF FLATS - 23
NUMBER OF RESIDENTS - 57

