

MOVEMENT ARTS CENTER: OPEN STAGES BENJAMÍN VIAL

ATELIÉR SOUKENKA 22 FA ČVUT

Taking the pre-existing silos as the core of the project, various slender and simple volumes are placed, which make up the performing arts center dedicated to the arts of movement. The center seeks to achieve an open and light place, where the structures facilitate the exhibition of works through different means, physical and virtual.



SITE ANALYSIS (context)



1. PRAGUE MARKET
103.060 sqm. Art-Nouveau and
Neo-Renaissance complex of 40
buildings built in 1983
5 min. walk to the silos

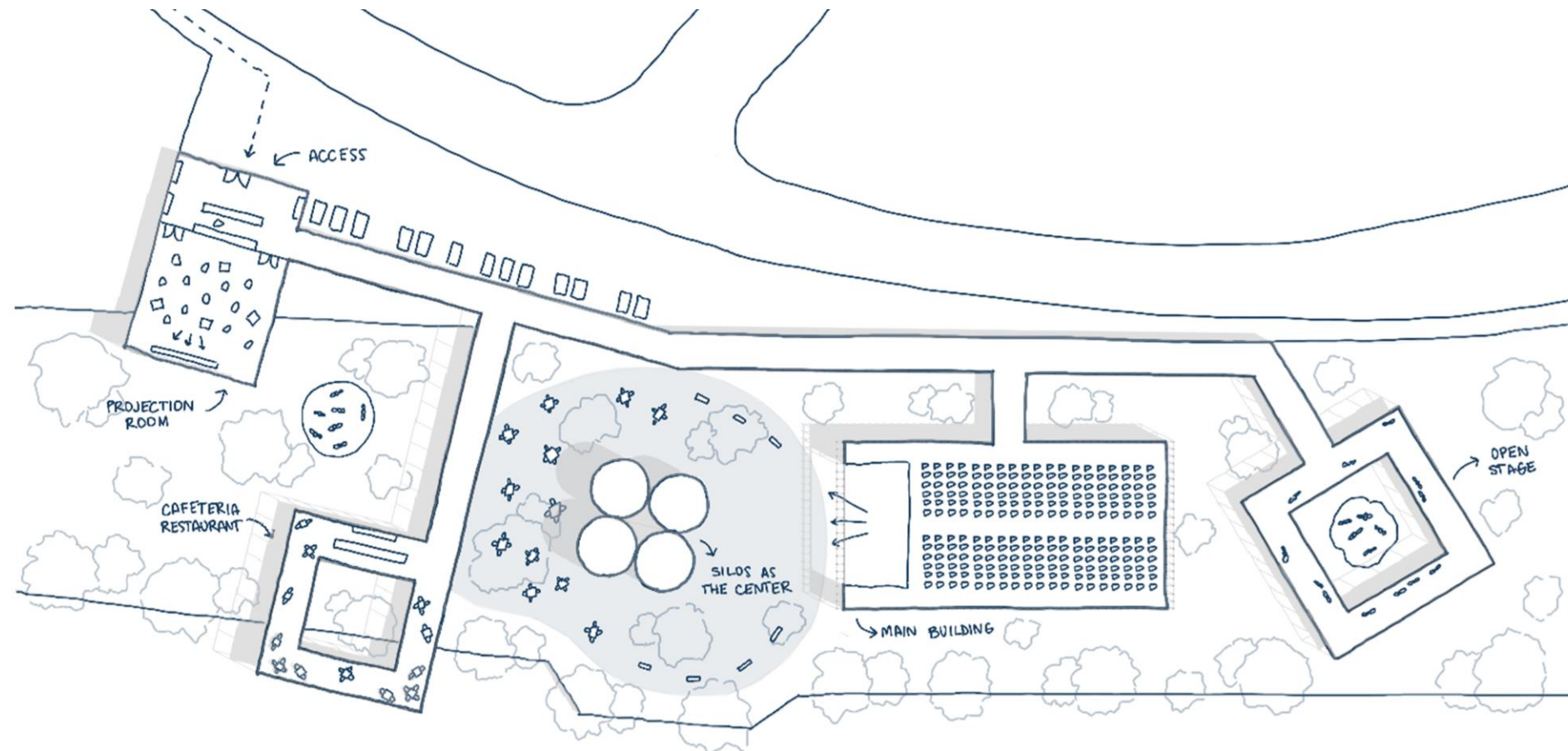


**2. DRIVING RANGE
ROHAND ISLAND**
Immediate front of the work site
across the river.
Green and open view.
12 min. walk to the silos



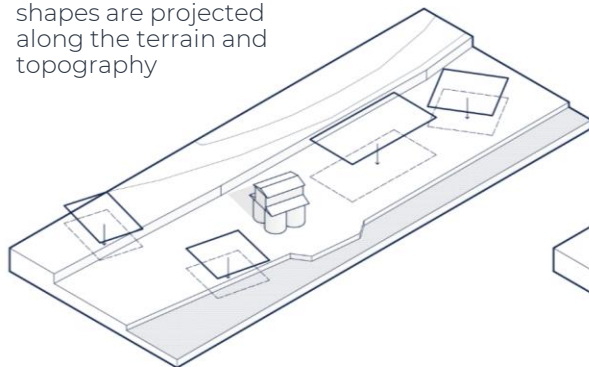
3. LIBEN BRIDGE
Important access road to the
working site.
Built in 1925 to connect
Holešovice with Libeň
8 min. walk to the silos

CONTENT (layout diagram)



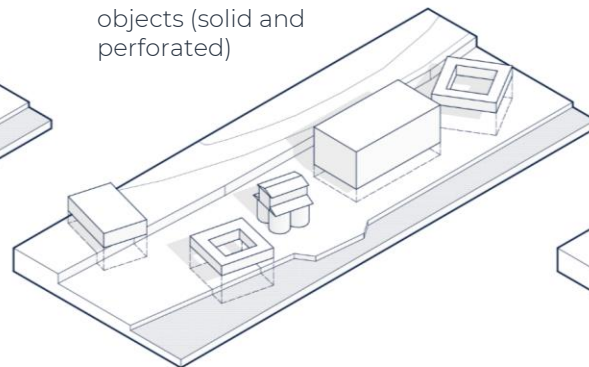
RIGID GEOMETRY

shapes are projected along the terrain and topography



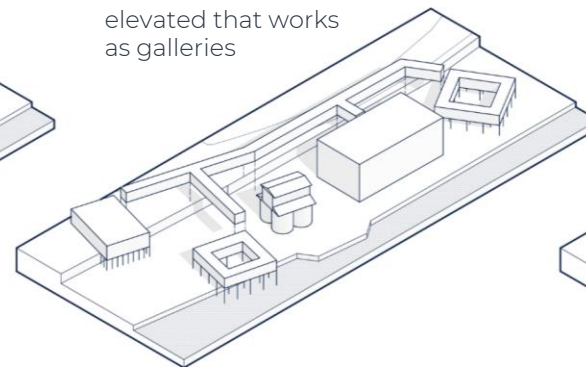
VOLUMETRY

objects (solid and perforated)



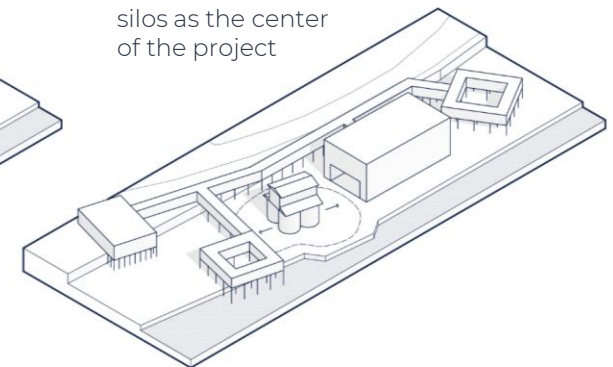
CIRCULATION

elevated that works as galleries



CORE

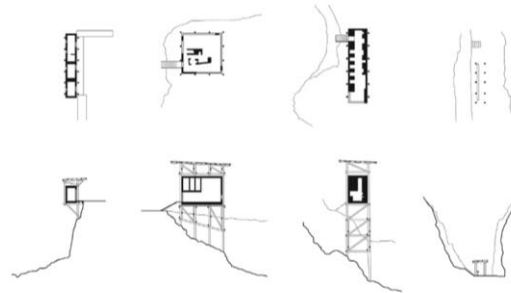
silos as the center of the project



ALLMANAJUVET ZINC MUSEUM PETER ZUMTHOR (REFERENT)

The Peter Zumthor Zinc Mine Museum consists of a volume suspended in the air by wooden pillars, this way the unevenness of the land is resolved, and generates a sculptural structure that works for a specific use.

Taking this idea, the proposal is to build different volumes suspended in the air (connected between some bridges), which would create different spaces with various dimensions for performing arts, and also a natural way to put the audience in a privileged view towards the performance happening on the ground level.



LACUSTRINE PAVILION TAP (REFERENT)

The Lacustrine Pavilion is installed around a fountain in the city of Lacustrine, with the intention of remembering the past of the place.

The architects compare the circular shape of the structure to a microscope, since it places the users' gaze on a single central point, which would be very useful for a performing arts center such as the one proposed.

The wooden structure functions as a route and stands, generating a 360° stage, matching the views from all sides.

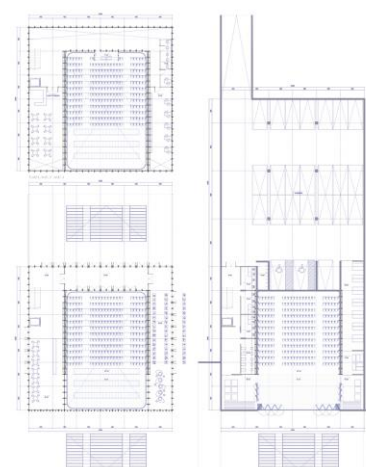
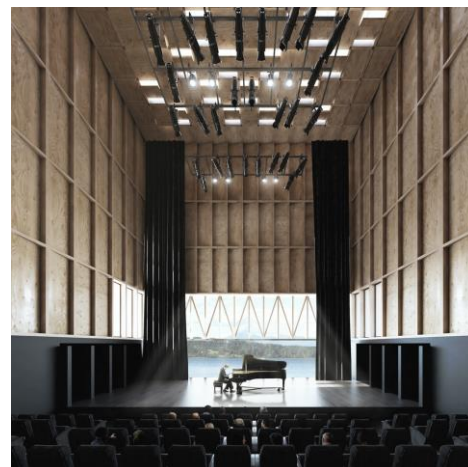


PANGUIPULLI THEATRE TOMÁS VILLALÓN (REFERENT)

The "Teatro de Todos" is a theater dedicated to the arts located in Panguipulli, Chile.

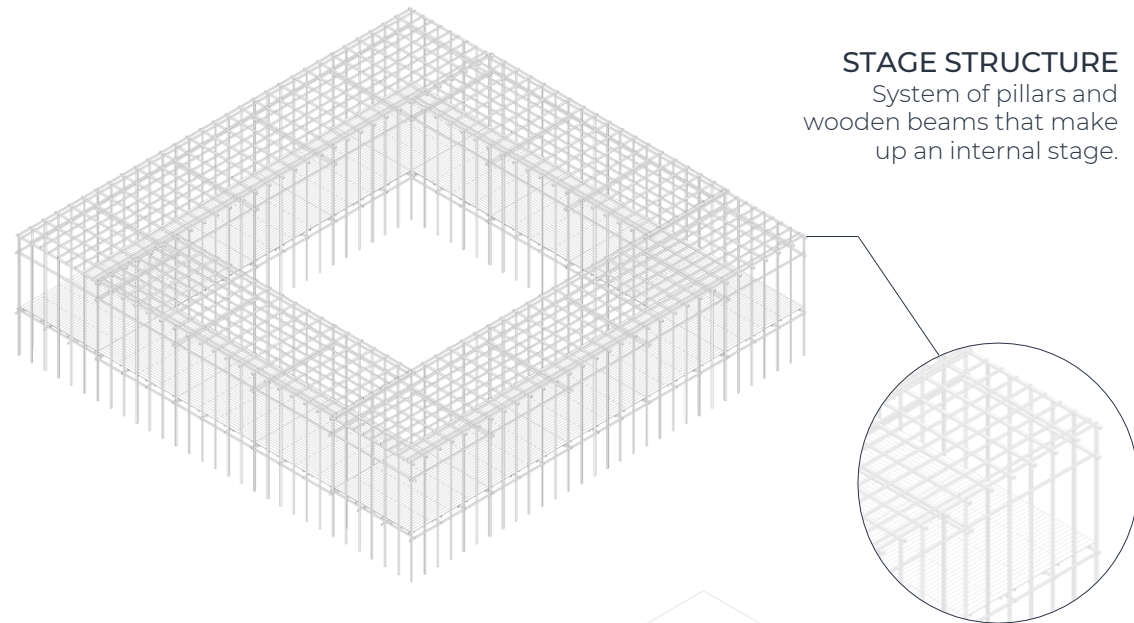
It is conceived as a two-layer space, where it is possible to take the stage outside, opening the possibility of multiple uses.

The project route is intended to be at the level of a single floor, whose differences will be characterized by an ambiguous interior and exterior that aims to blend the public uses of the square with the interior of the building. The box assumes larger scale dimensions, achieving a clear field, which is adapted for conventional and experimental theatrical activities.



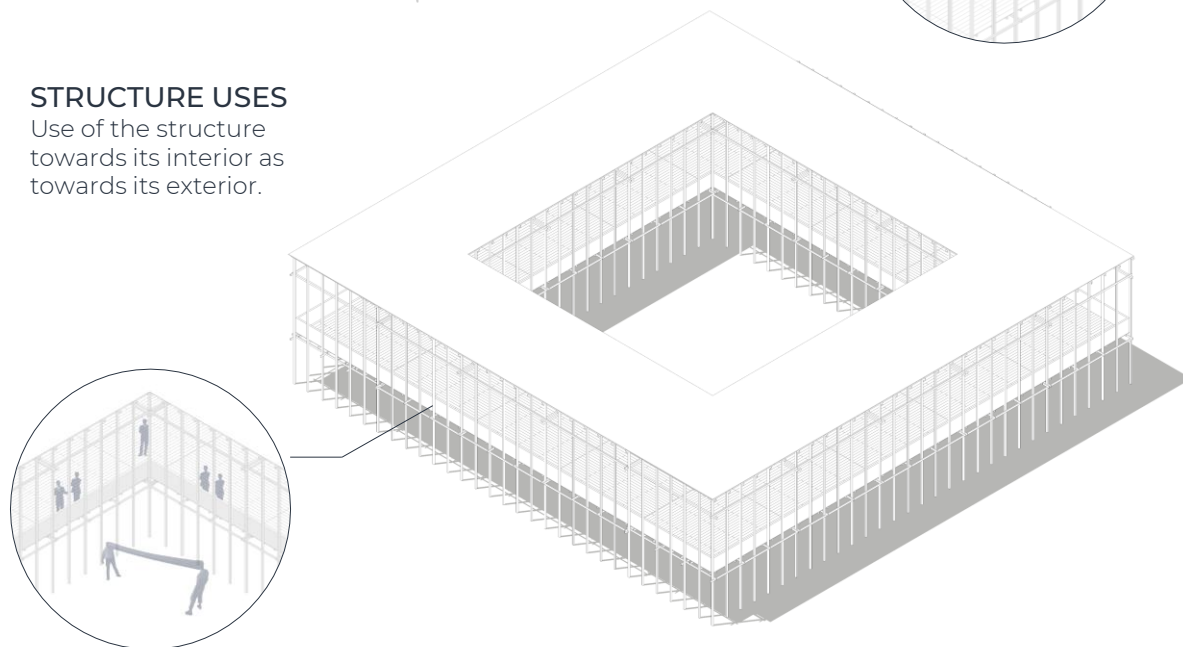
MOODBOARD





STAGE STRUCTURE
System of pillars and wooden beams that make up an internal stage.

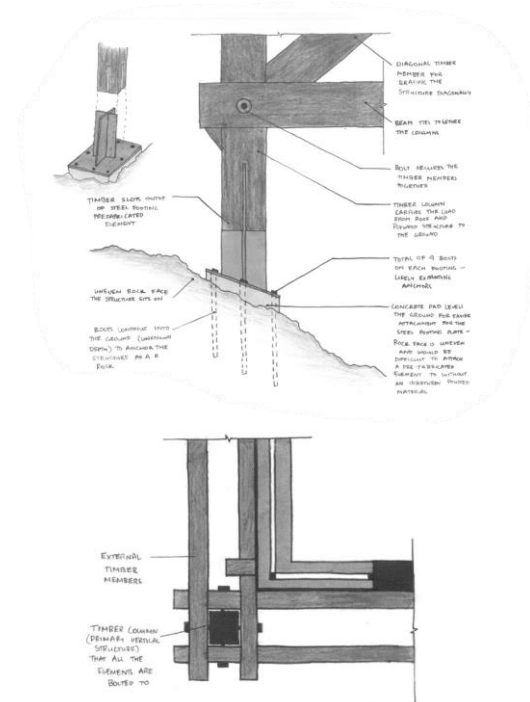
STRUCTURE USES
Use of the structure towards its interior as towards its exterior.



WOOD STRUCTURE

The project is designed in wood, in such a way that it is a light building and allows the use of the natural terrain of the plot.

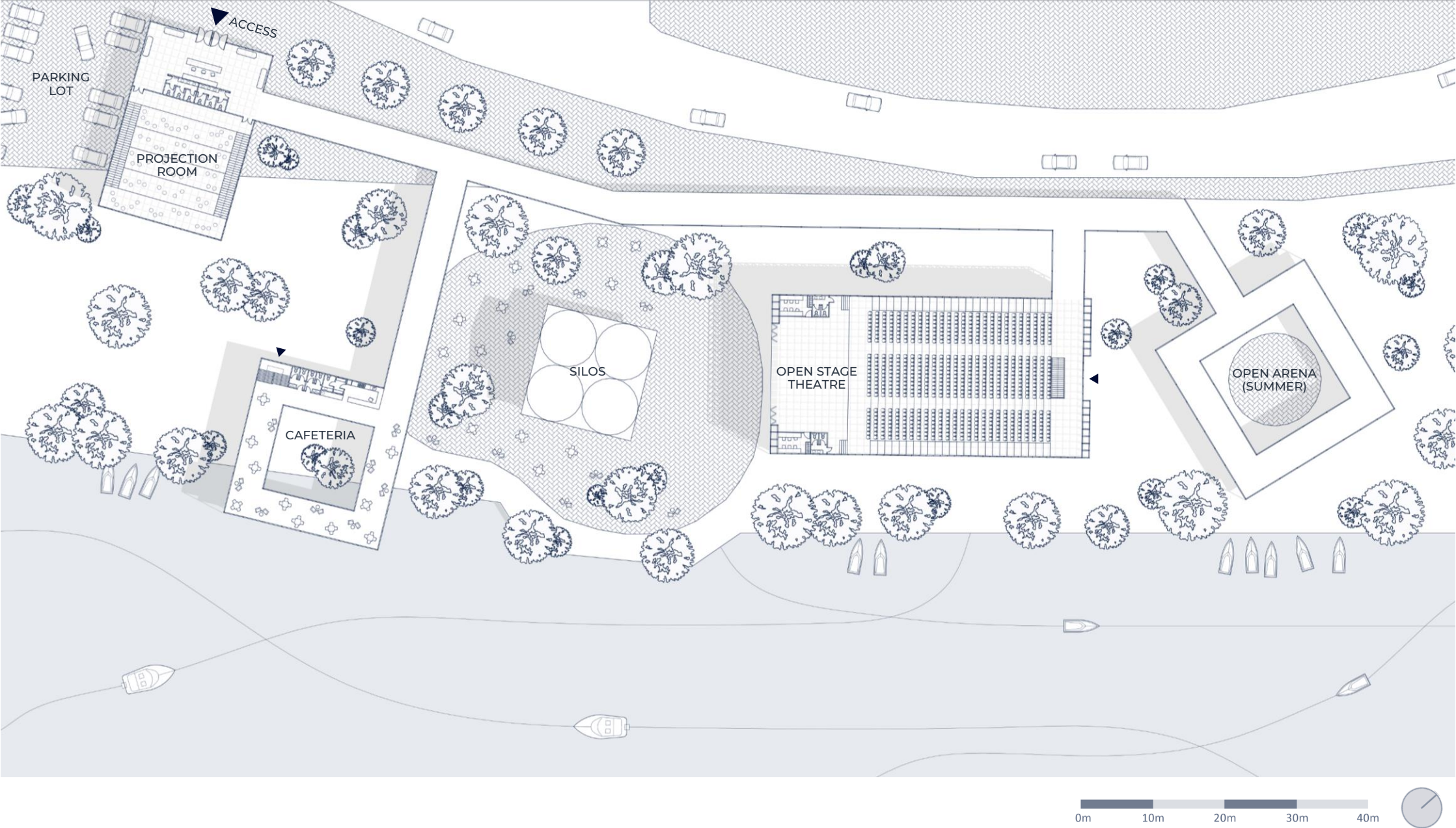
In this way, a large park is constituted throughout the land, with isolated constructions that are protected from possible overflows of the river and floods.

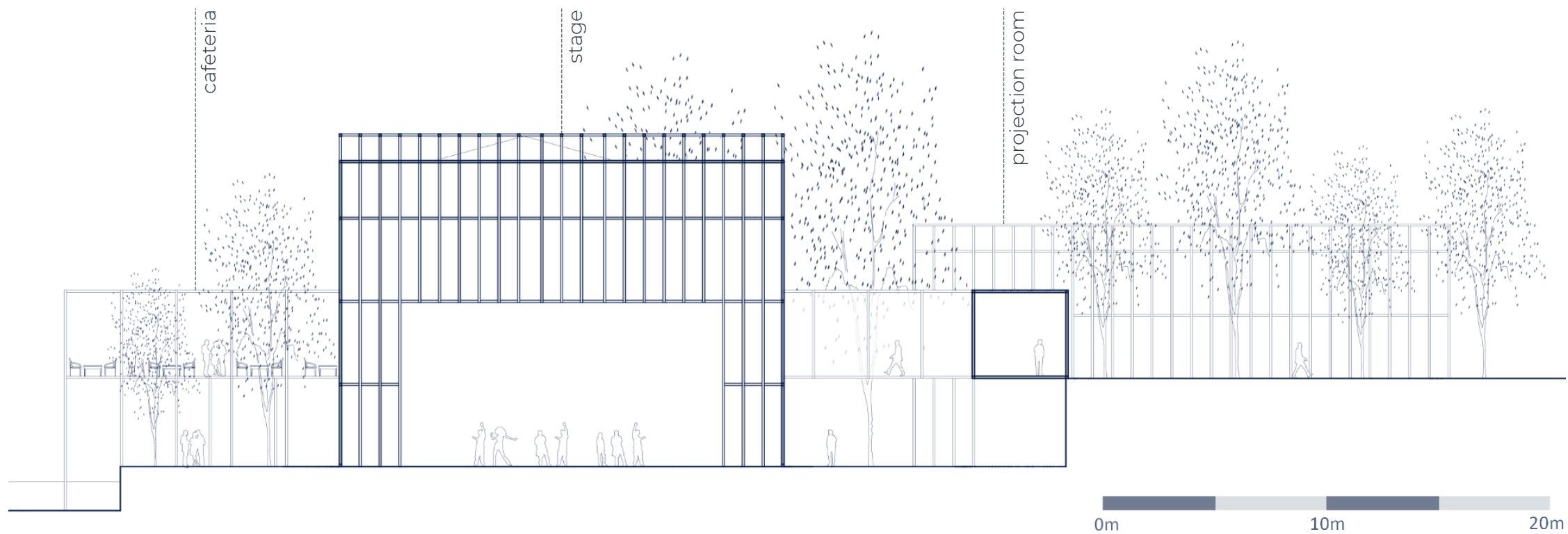
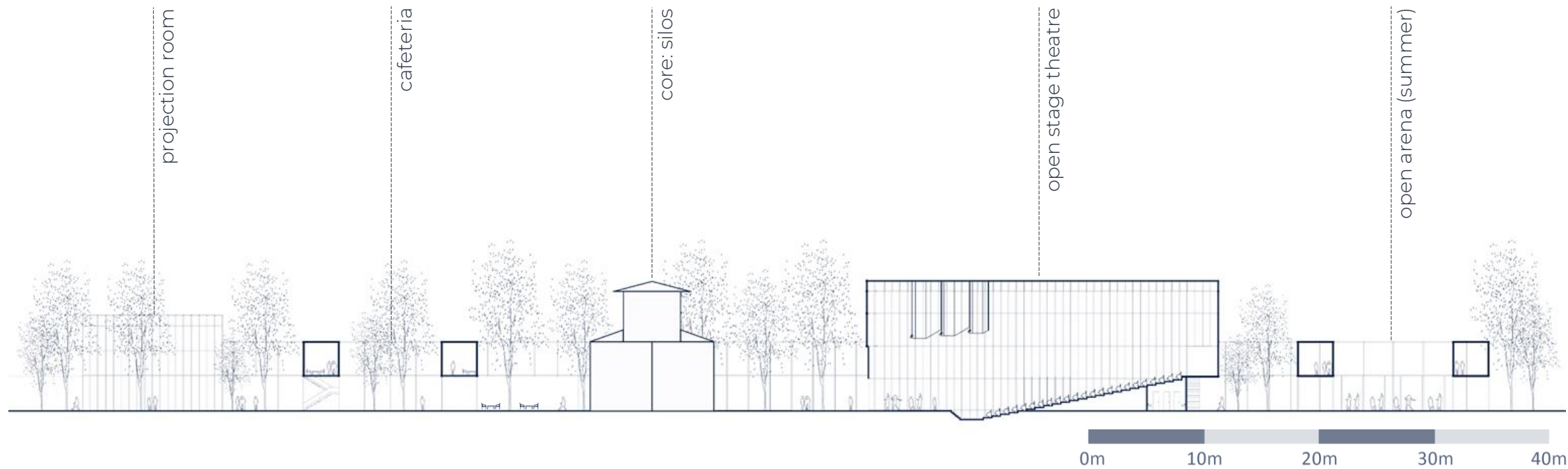


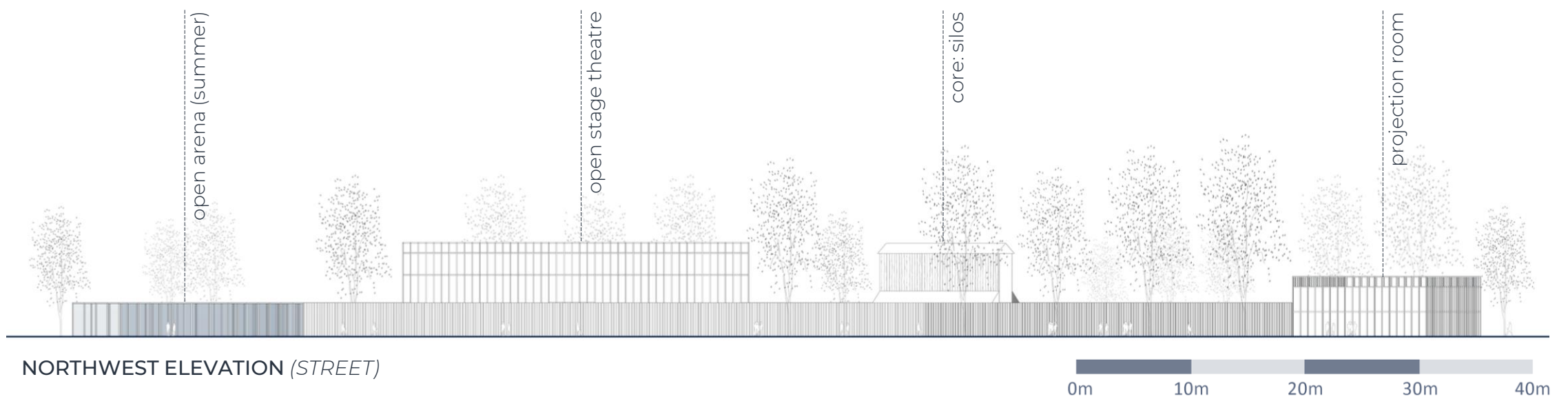
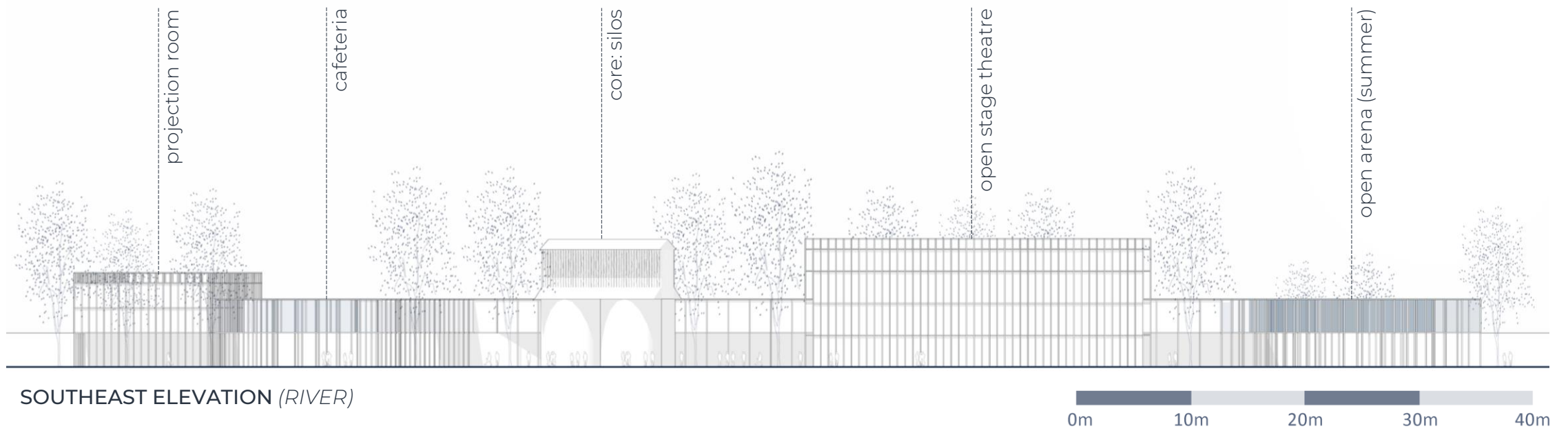
WORKING AREA

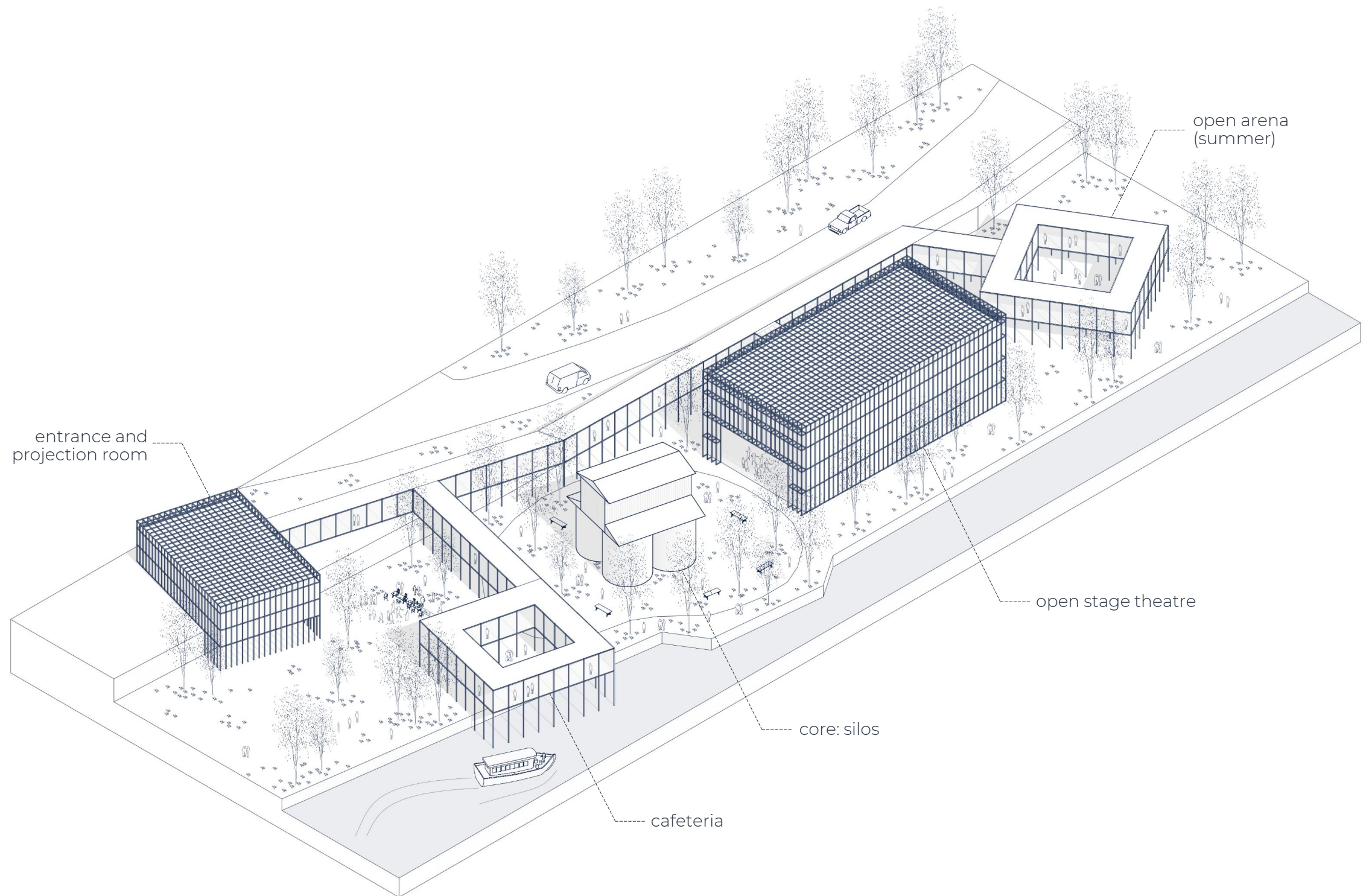


FLOOR PLAN



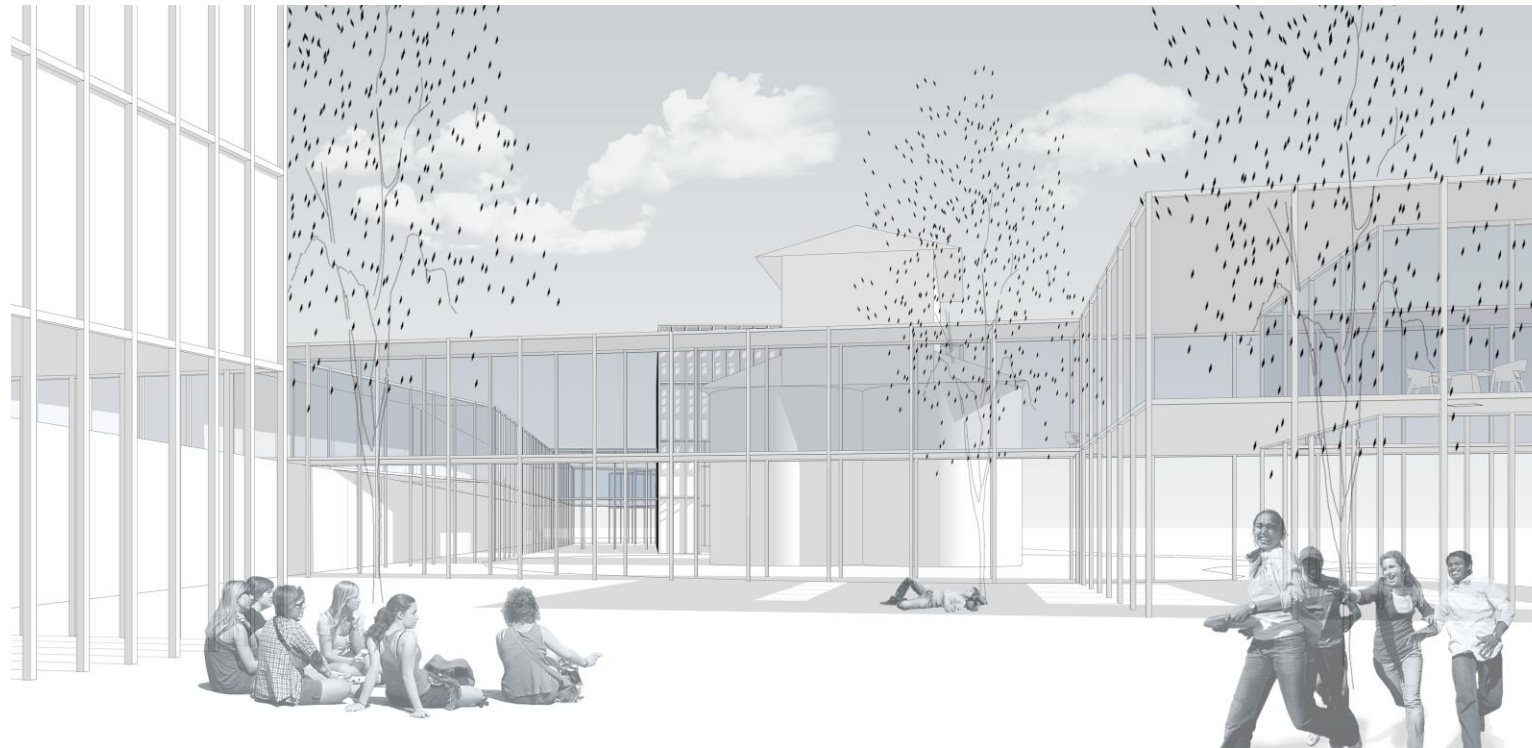






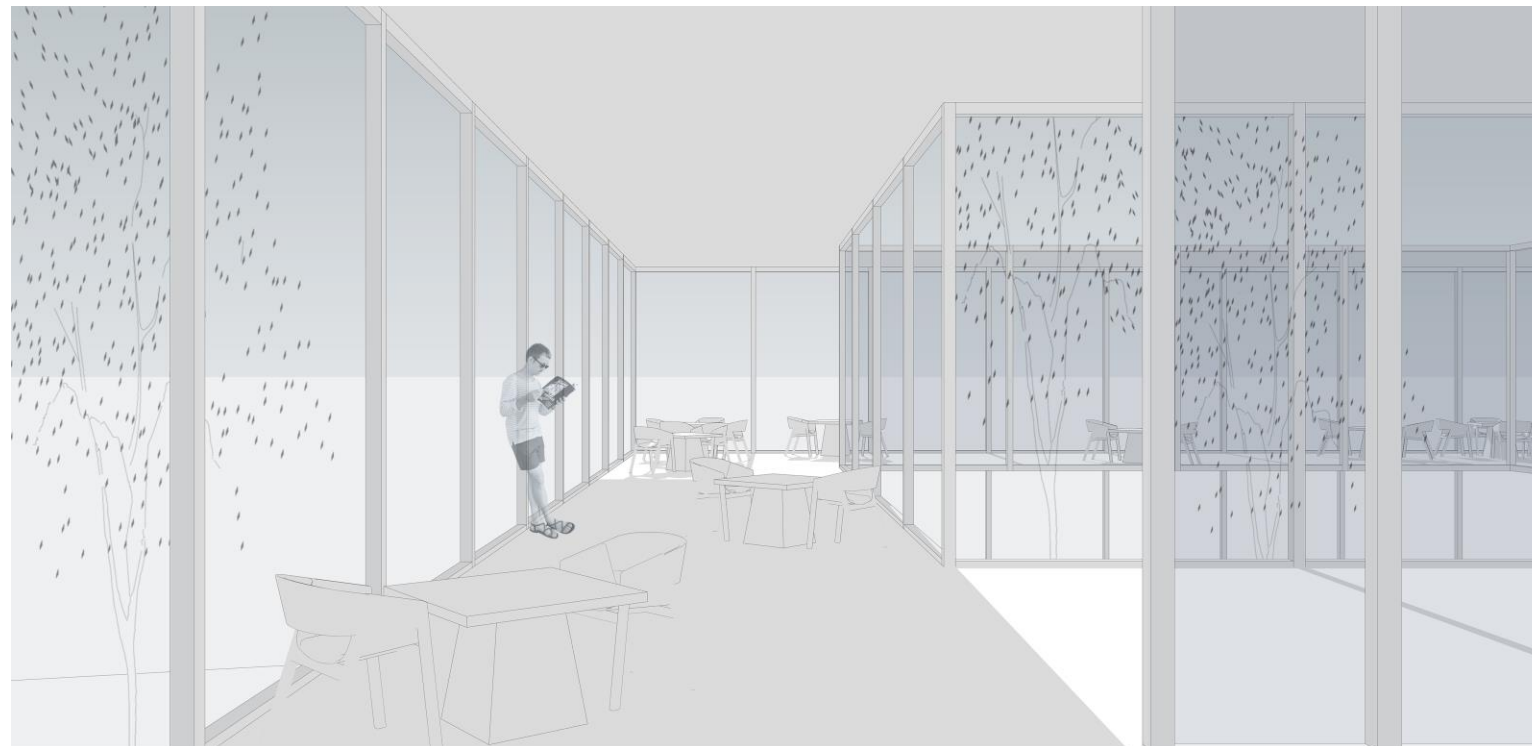
EXTERIOR VIEW

between the back of the projection room and the cafeteria. shows the openness of the project and the silos in the core of the place.

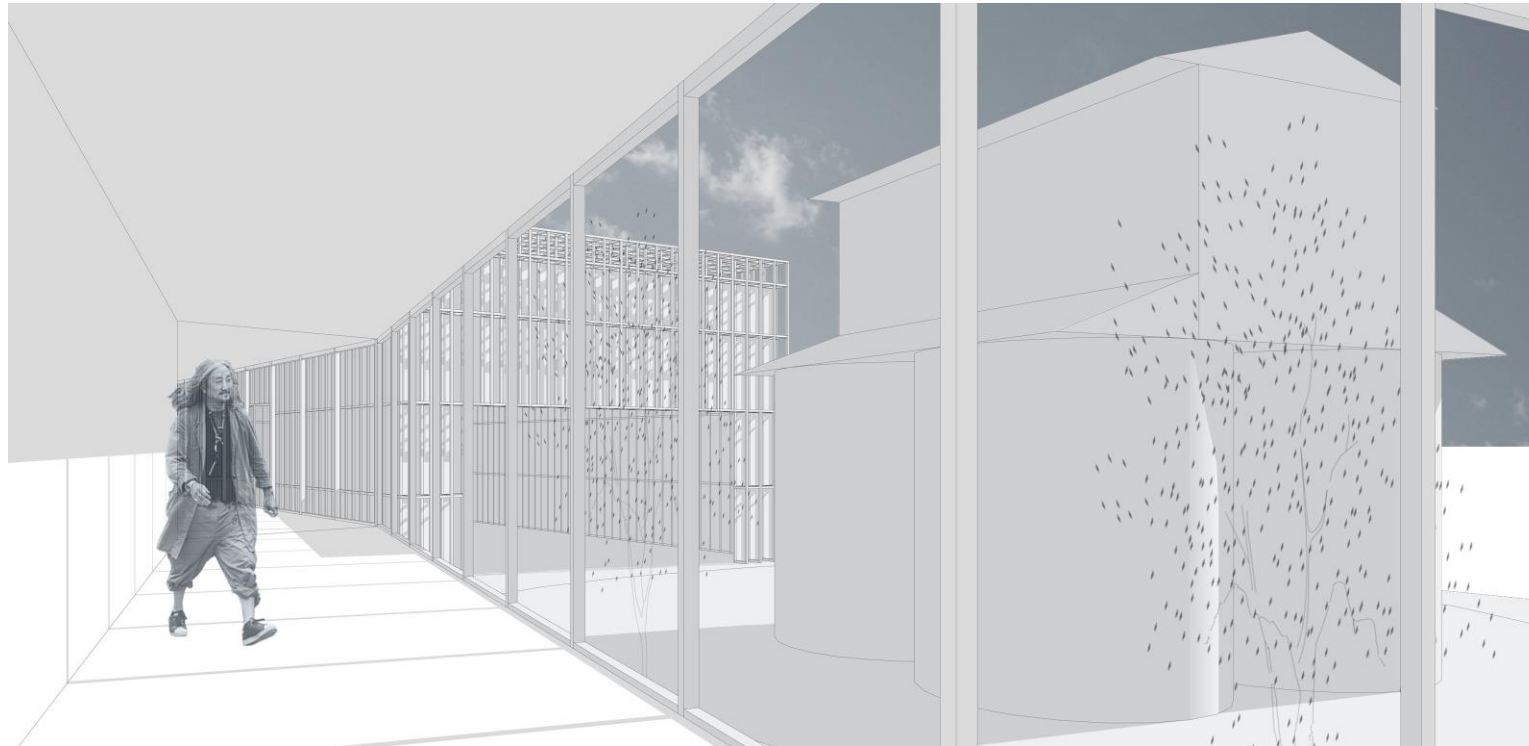


INTERIOR VIEW

inside the cafeteria. it can be seen the middle open space, and how the structure works as a viewpoint to the river and the in between spaces.



INTERIOR VIEW
in the circulation
from the
access/projection
room to the main
stage. the silos are
set as the main focus
of the project.



**INTERIOR-
EXTERIOR VIEW**
from inside the main
building, the open
stage theatre. it
brings the stage to
the outside space,
creating an open
stage within the
silos.

