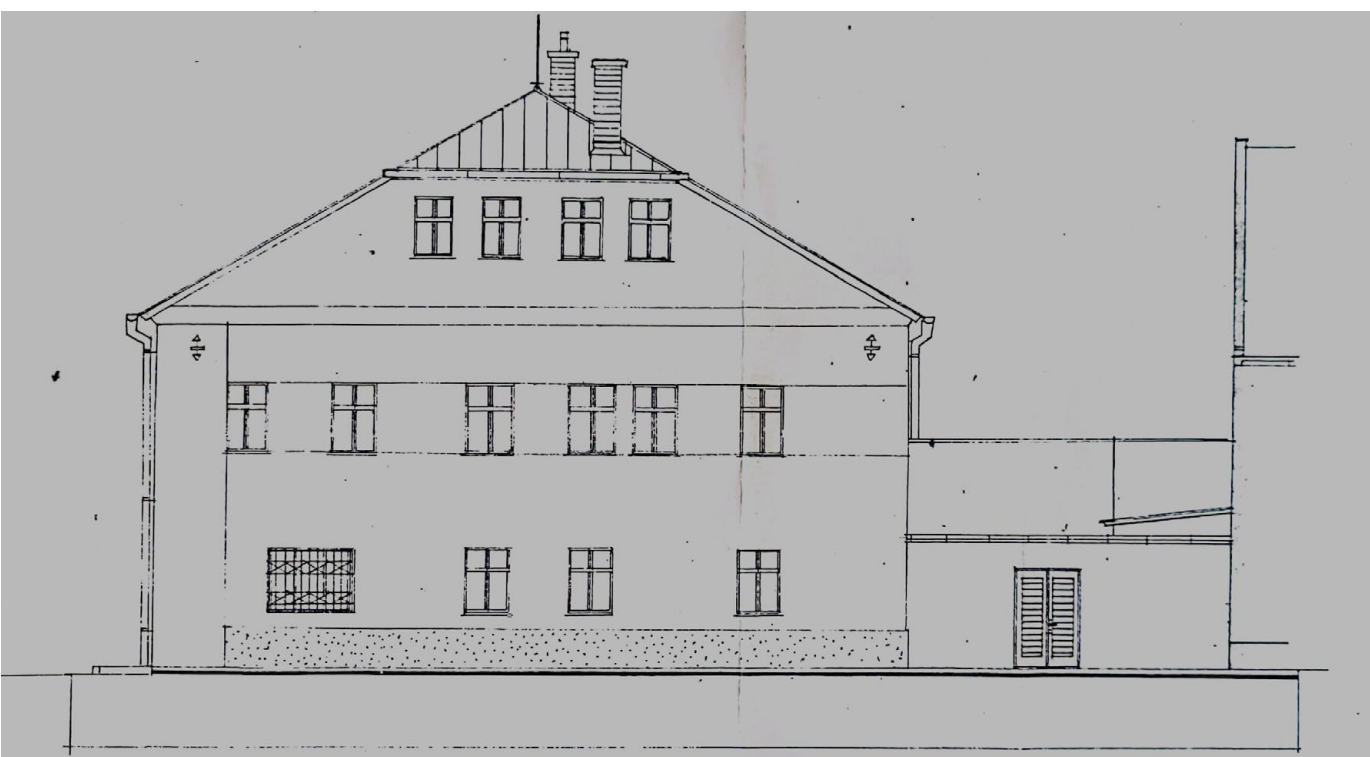




ANNE-GAËLLE DEVOUARD
FRANCE, MASTER 1
SUMMER SEMESTER 2022, AT2

BAR AND GUEST HOUSE
POLIČKA - NEW BUILDING ON THE CORNER
POLIČKA REGION - EAST BOHEMIA

DESIGN STUDIO EFLER
DEPARTMENT OF ARCHITECTURAL CONSERVATION
FACULTY OF ARCHITECTURE, CTU IN PRAGUE



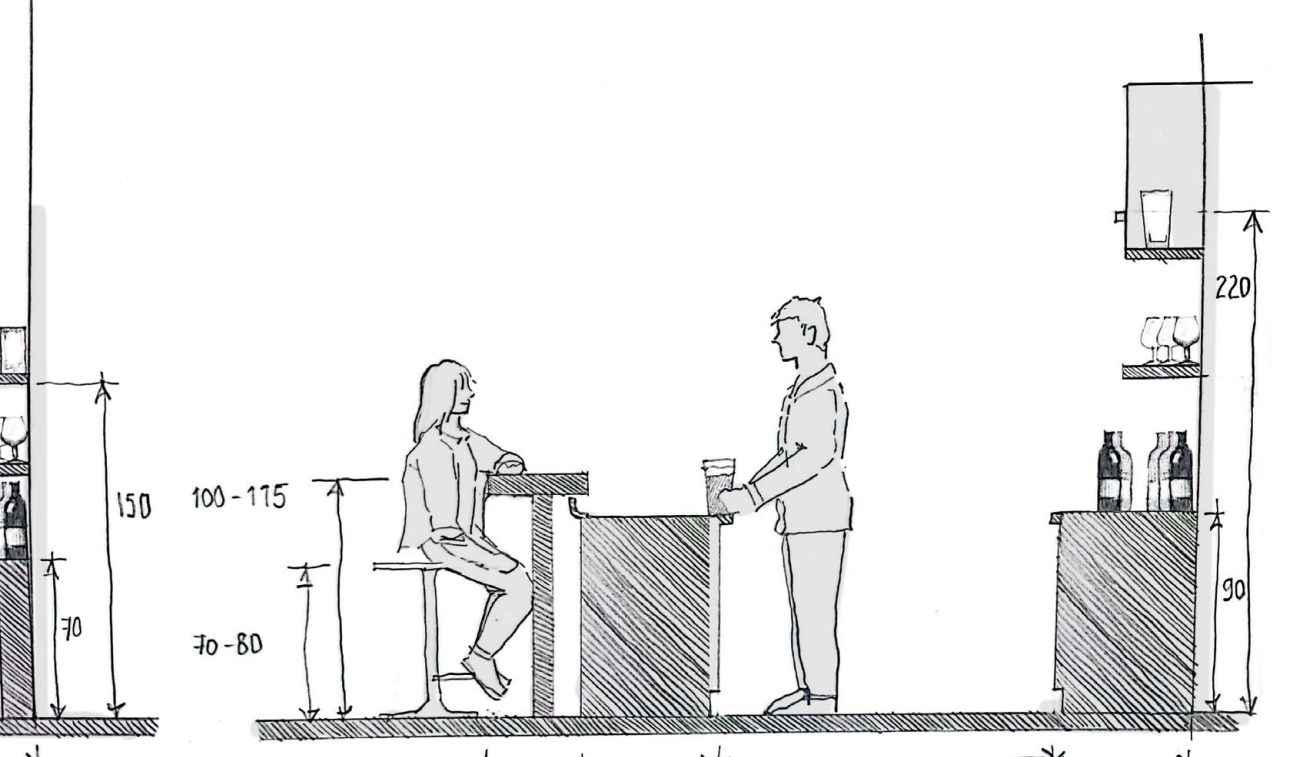
Polička is a 8 800 inhabitants town with a rich historical center. Not far from the medieval walls is an empty corner plot previously occupied by a house. The project proposes to build a bar and a guest house to fit the strategic location and to complete the need of these facilities.

The leading idea of the project is to bring more outside life to the pleasant streets of the town. The bar on the ground floor offers windows with external seats to enjoy drinks outside. The guest house has a generous terrace on the first floor and balconies on the attic.

The ground floor is split between the bar and the guest house entrance. The first floor is composed of suites (bedroom and bathroom) and one small apartment while the second floor is for economical rooms of three beds each associated to a toilet cabinet and a sink. The best room in the corner is a

common living room for the guest house. The underground permits the bar to have an extra room to play games and gives access to facilities. Part of the underground is also locals for the guest house.

The whole building has been designed by taking into account people with reduced mobility. The bar can welcome workers with RM with an adapted bar counter. Rooms for PRM are situated on the first and second floor.

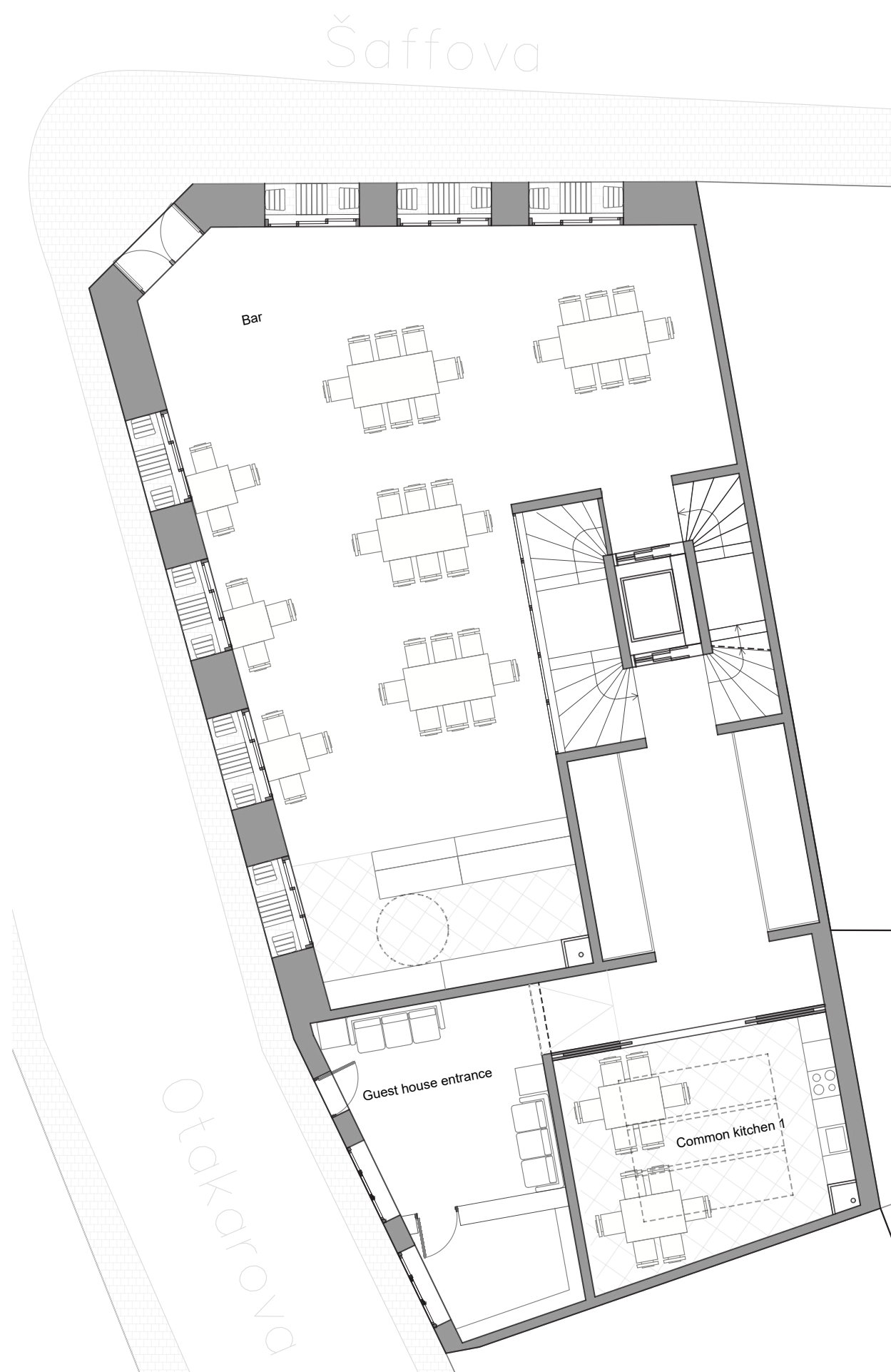


SITUATION PLANS

BAR DESIGN



UNDERGROUND



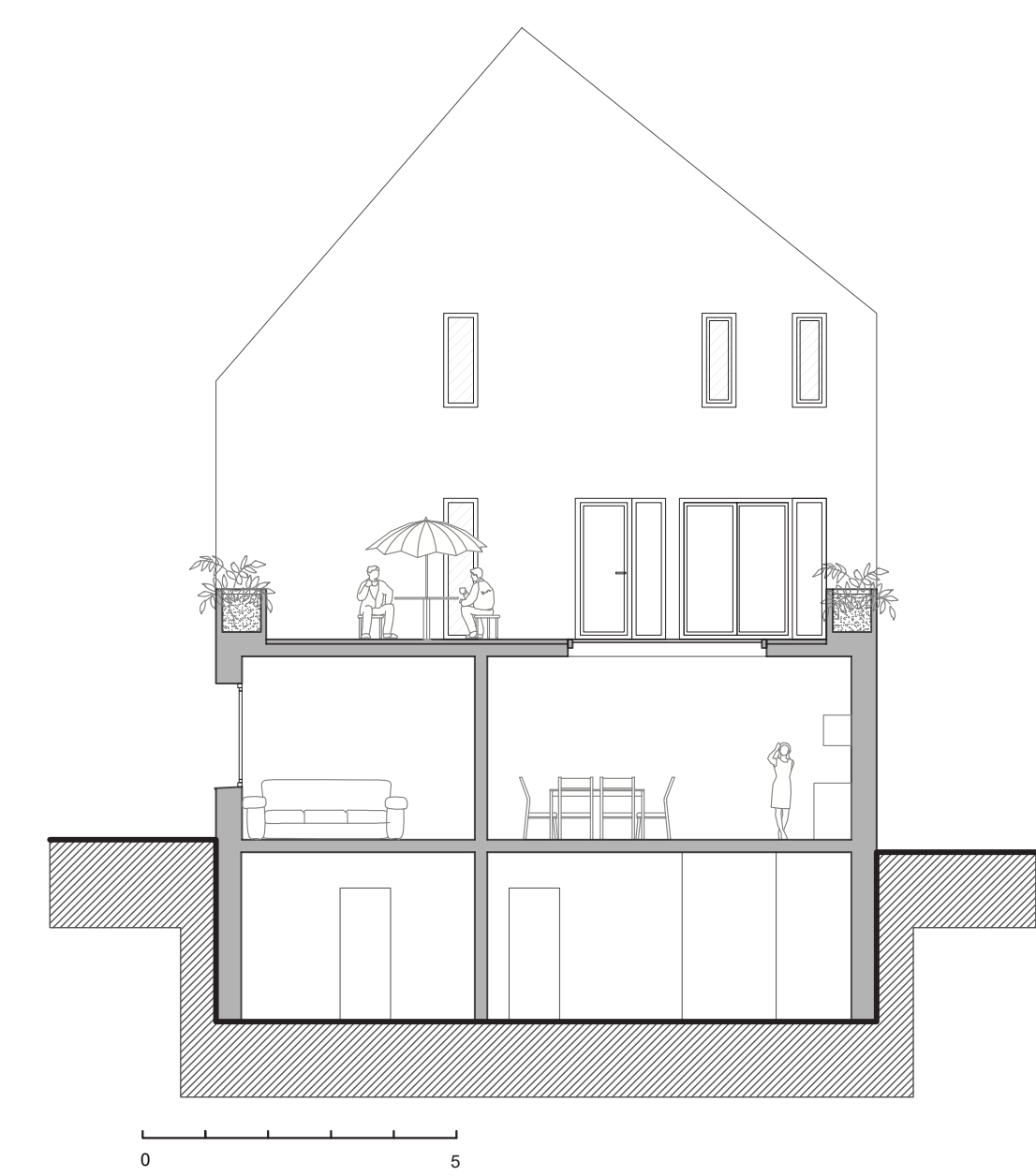
GROUND FLOOR



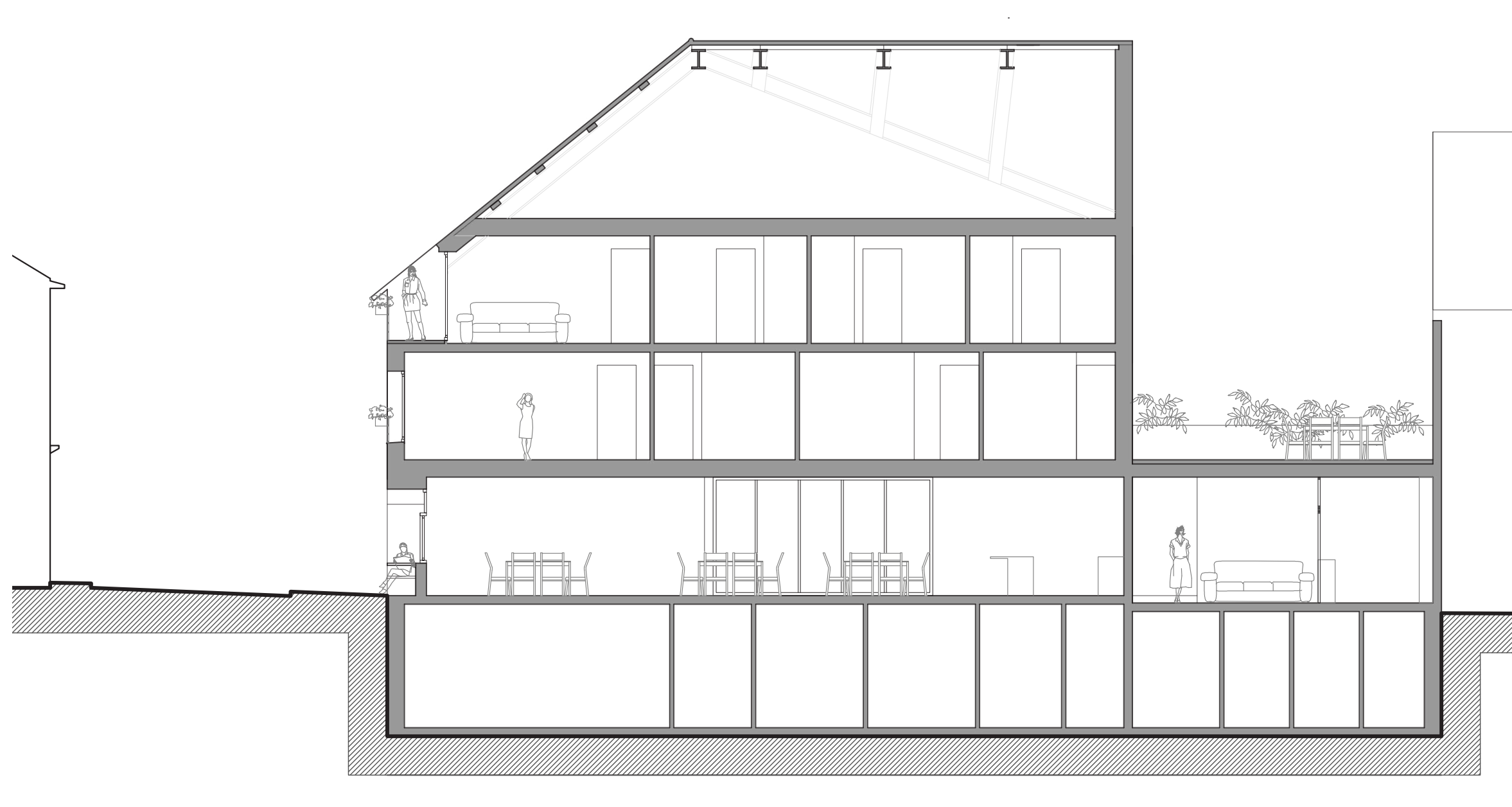
1ST FLOOR



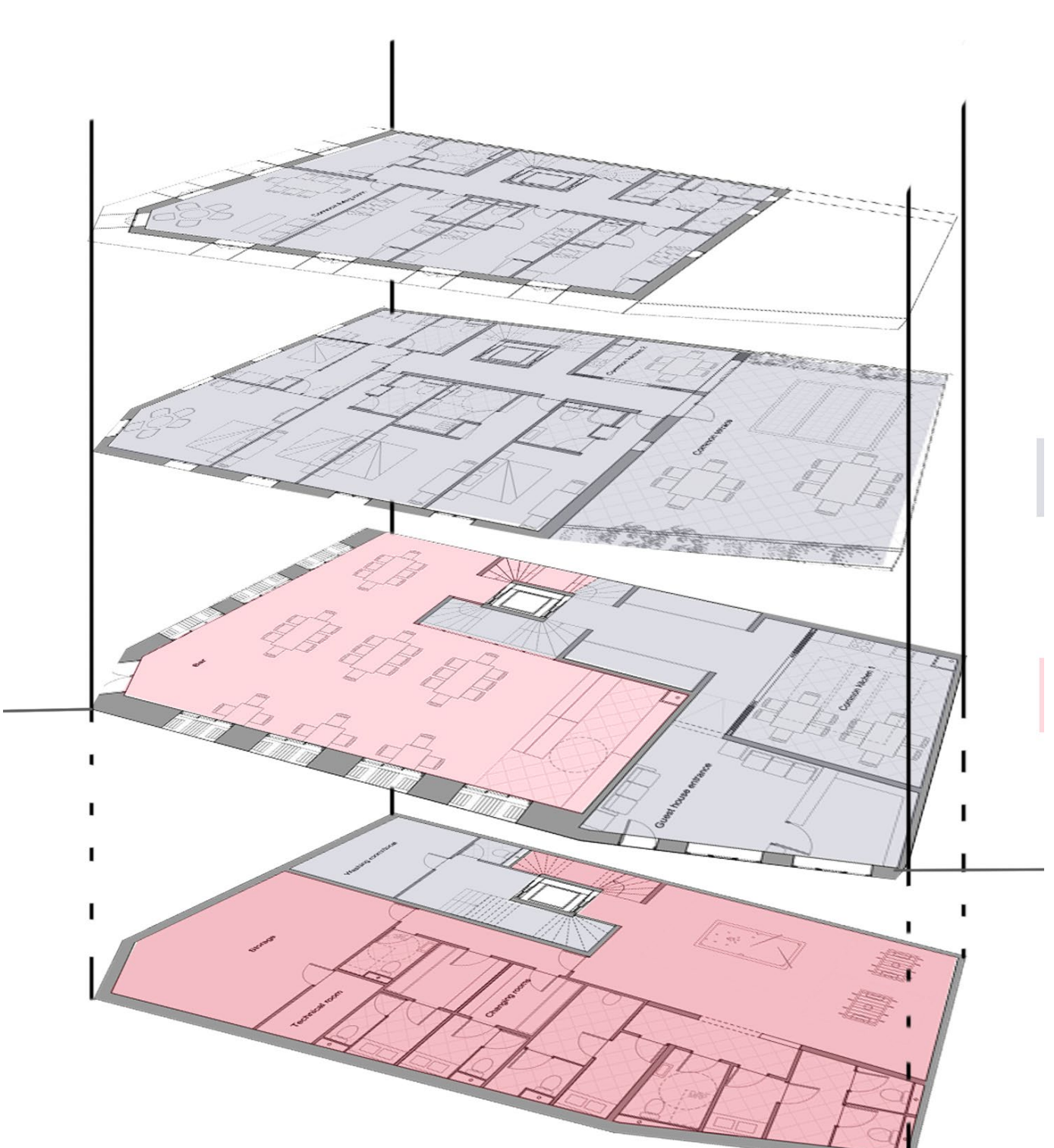
ATTIC



SECTION THROUGH THE GUEST HOUSE TERRACE



SECTION THROUGH THE BAR AND GUEST HOUSE



GUEST HOUSE

BAR

REPARTITION OF THE BAR AND GUEST HOUSE IN THE BUILDING



NORTH ELEVATION

