



P O R T F O L I O

FUNSCRAPER



LOCATION: PRAGUE HOLEŠOVICE BUBNY-ZÁTORÝ

Skyscrapers are high-rise buildings that streamline the floor plan use of the building by stacking functions on top of each other. Such multiple use of the plot has many advantages, especially in city centers where there is a shortage of available land. Most experts agree that increased density will help the city function more sustainably and efficiently and improve living conditions.

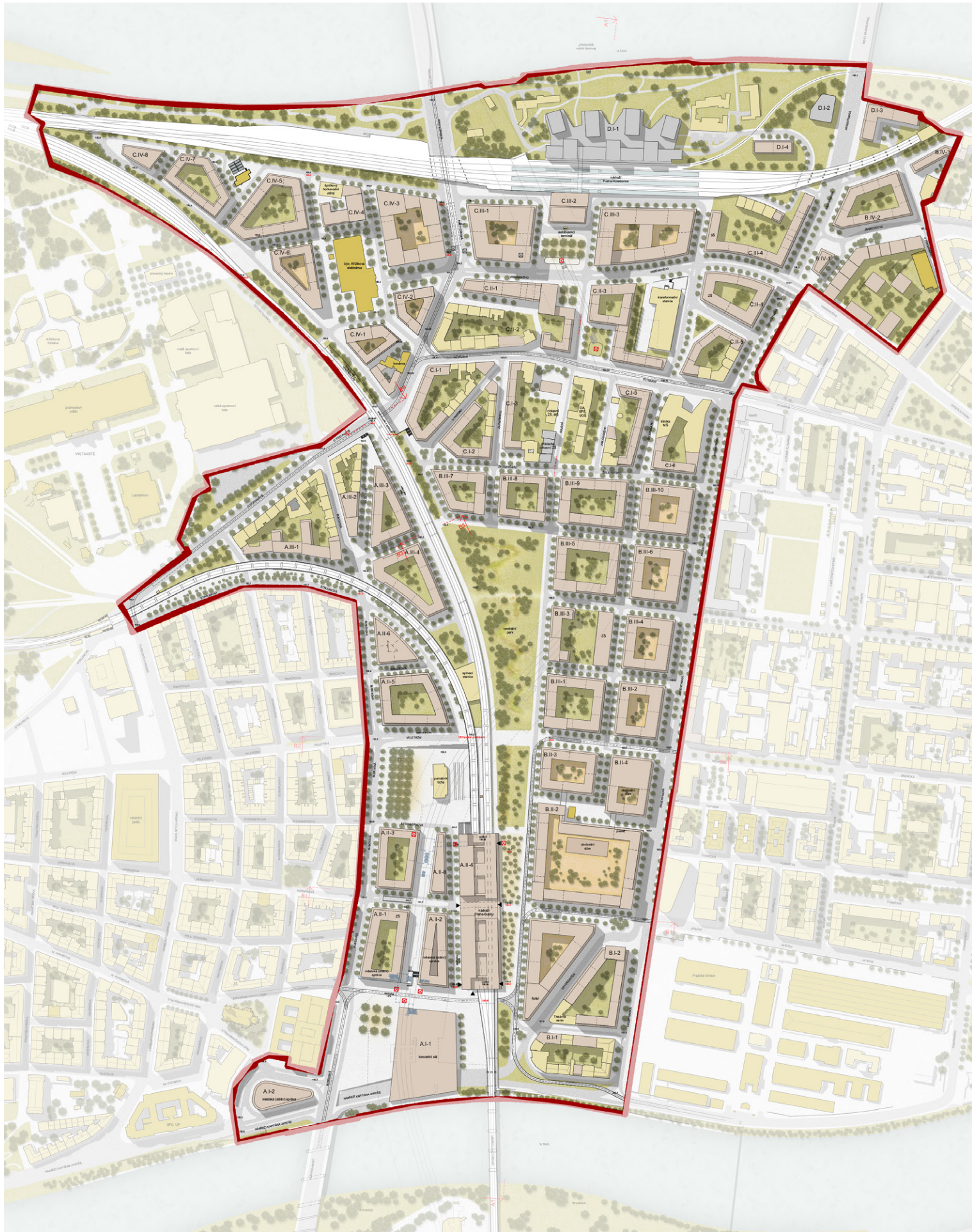
This semester we are interested in the potential of skyscrapers as such and, more specifically, their ability to stack functions that are not directly related to each other. This phenomenon has already been described by Rem Koolhaas in *Delirious New York's* discussion of New York's Downtown Athletic Club (152-158). However, the question is how such a hedonistic approach can be used today given the current problems with the energy crisis, global warming, the depletion of natural resources and the reduction of biodiversity.

By assigning the studio - to explore the potential of a skyscraper through the playful research and design of a «Funscraper».

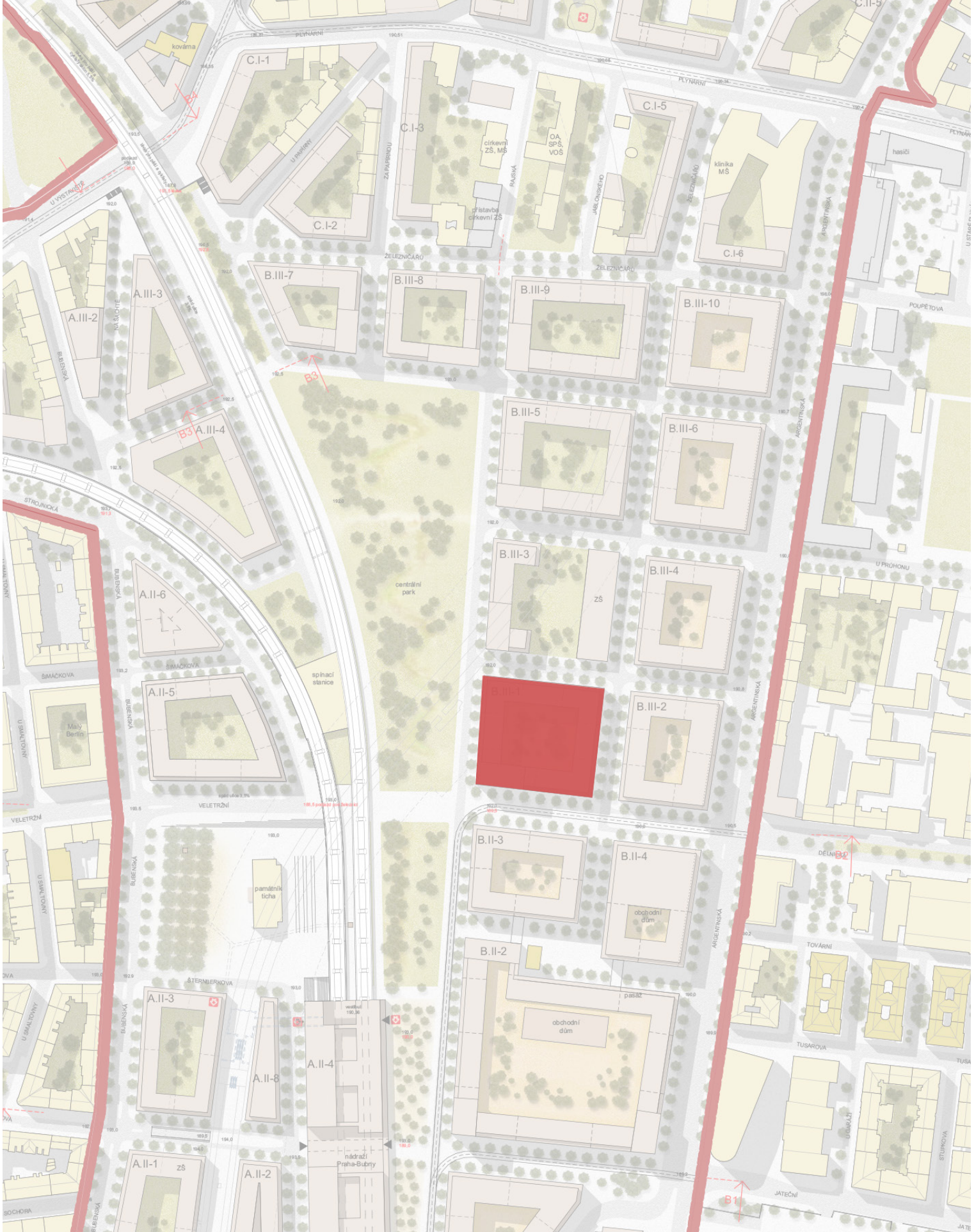
The testing ground for the studio is an area of Prague that has not served its original purpose for decades: Holešovice - Bubny-Zátory. A brownfield that is ripe for transformation into a new, modern neighborhood. Today it is still empty, but its future arrangement has already been determined by a spatial study, and plans for the construction of exceptional buildings, including the Vltava Philharmonic hall by Bjarke Ingels, are an integral part of the area's future.



The site (Bubny Zatory) requires high-rise construction in certain parts, without blocking the view of historical buildings, but at the same time creating its own modern attraction in the historical city of Prague. The proposed plan is linked to the Prague airport, which will attract more visitors, so there was a need to build a high-rise building in the area. The selected site is located in centre of location, central park and railway station. To take advantage of this, the plan was for the ground plan to become a central public space for inviting and engaging people.



PLANNING STUDY - BUBNY

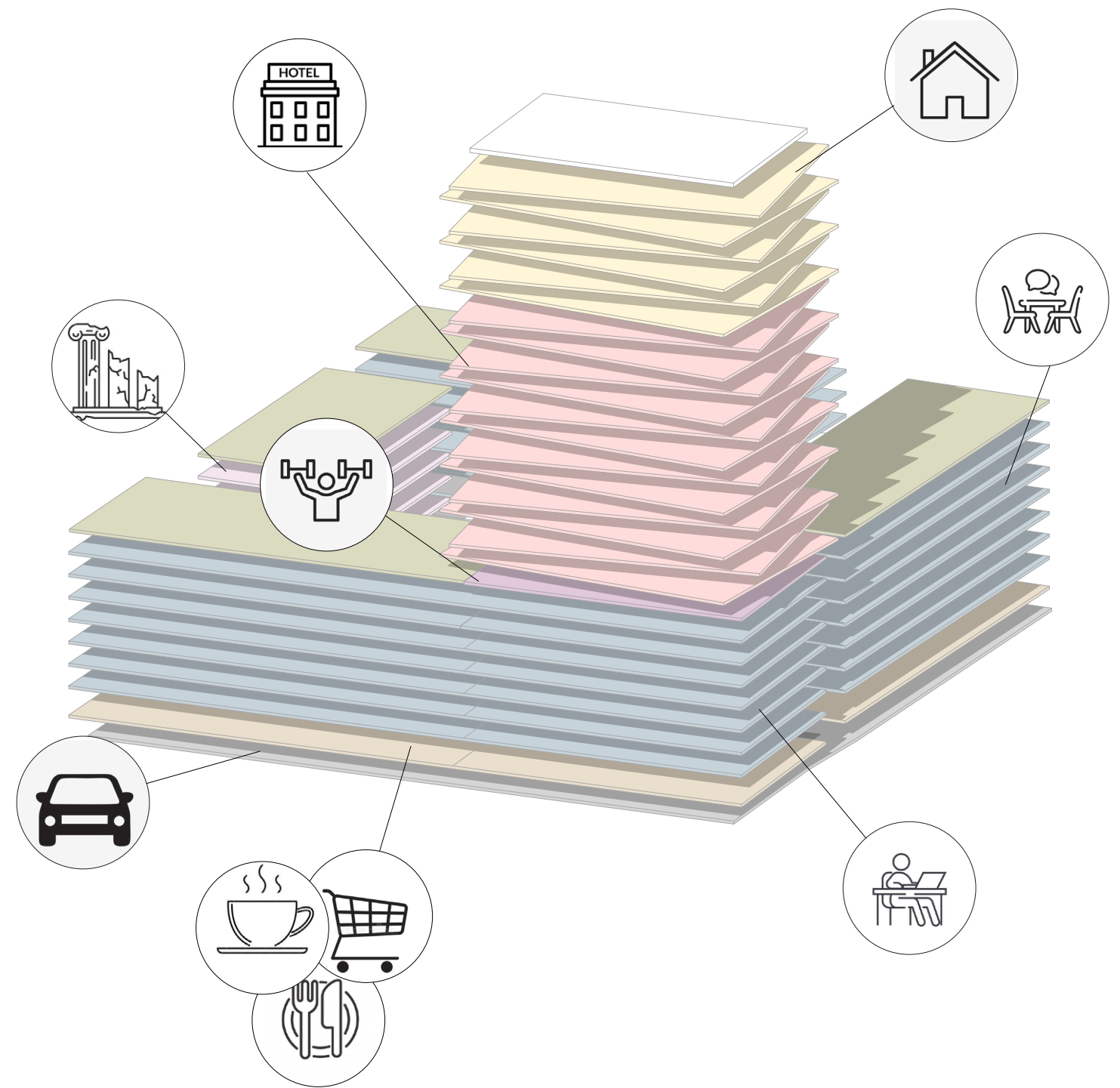


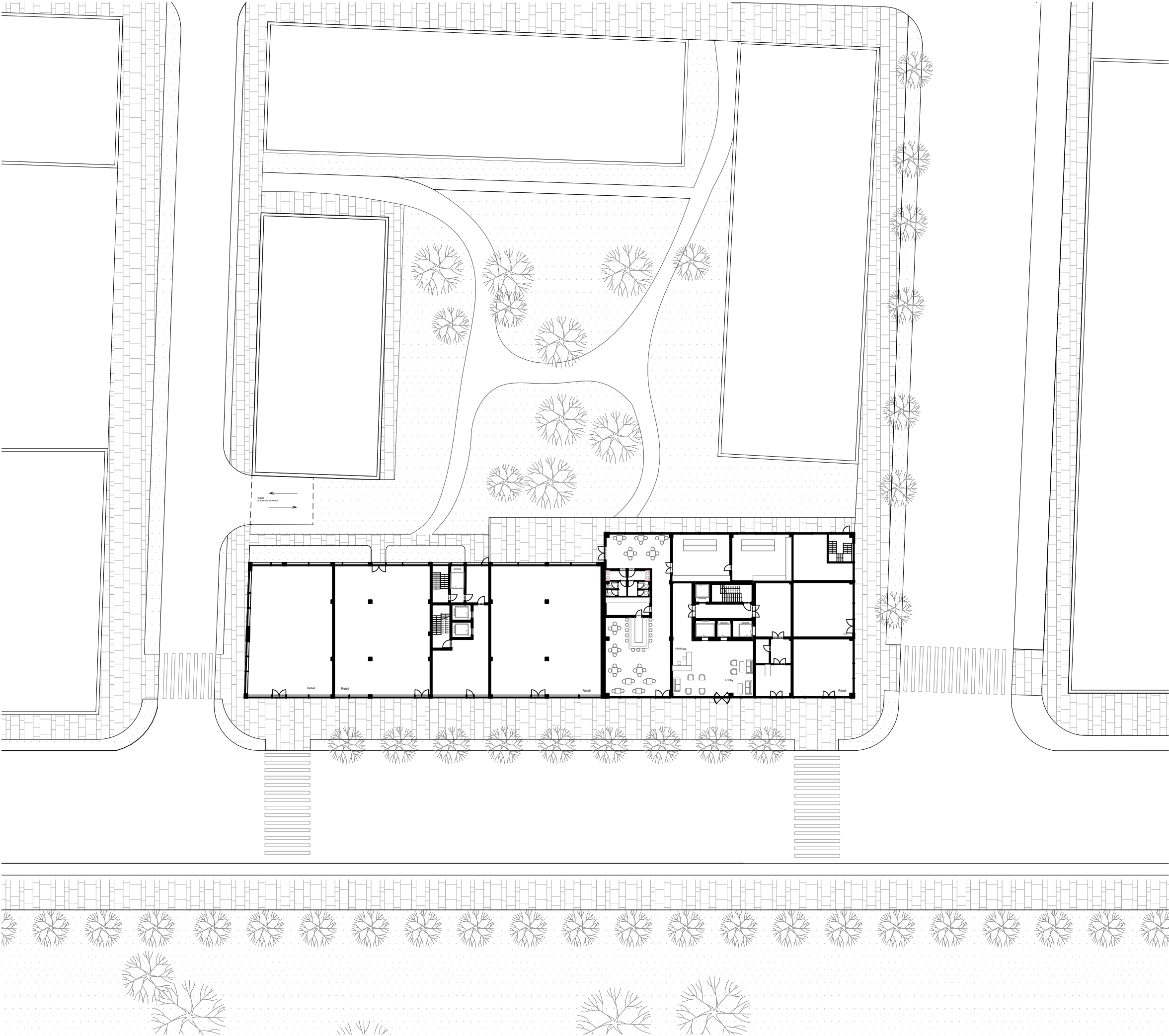
CHOOSEN BLOCK

The main goal of the structure was to create a landmark in the city, allowing to perform various functions for all demographic groups of users at any time of the day and create an active space that responds to the urban environment. The first floor was designed for multi-functional use with stepped outdoor seating.

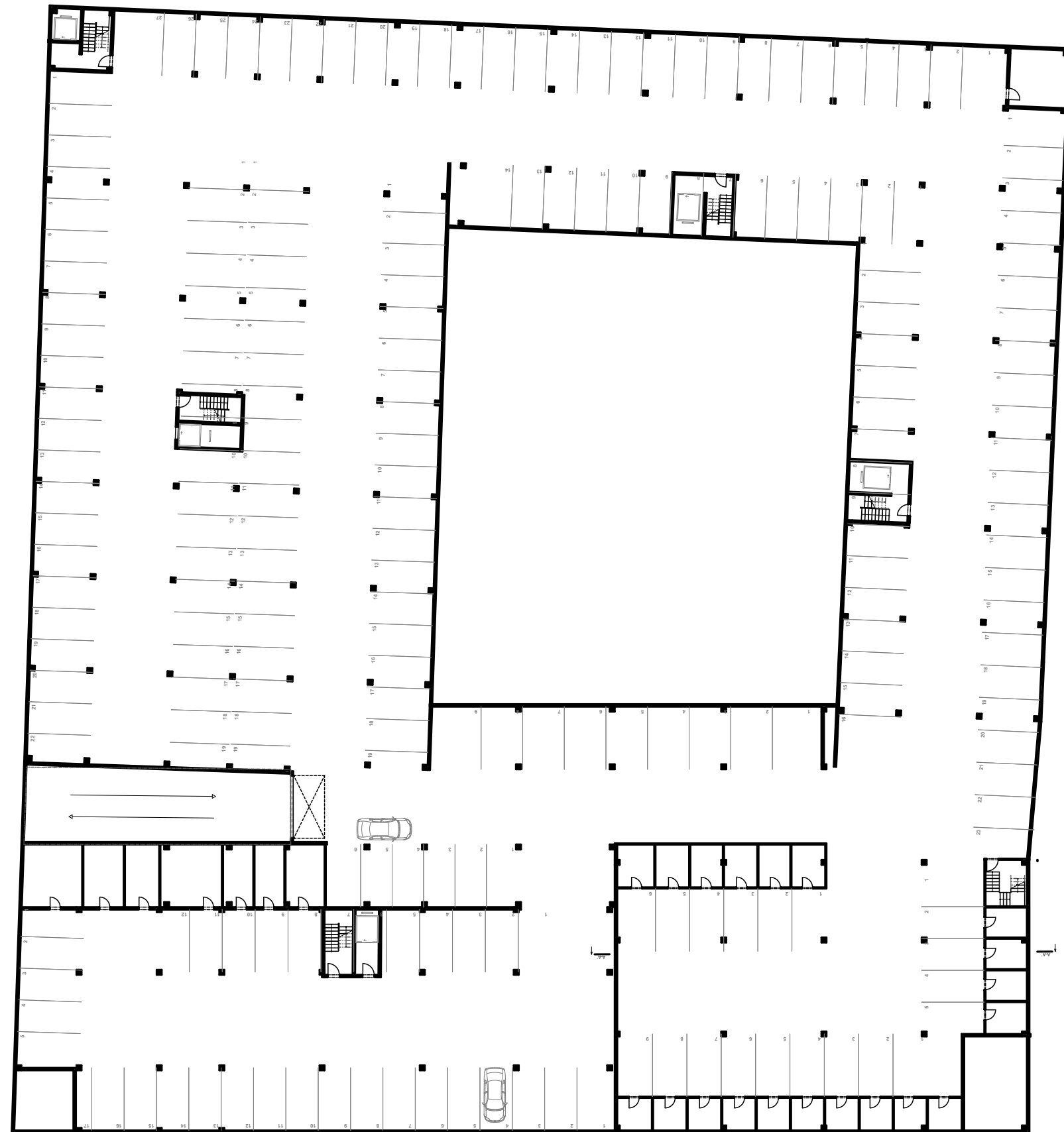
The volumes are easily accessible from the street, are reserved for more varied uses. The block offers offices, art museum, hotel rooms, living spaces, retails, restaurants, gym.

Underground parking unites the whole block. The entrance is located from the northern part of the block. There is a public park area for visitors inside the block.



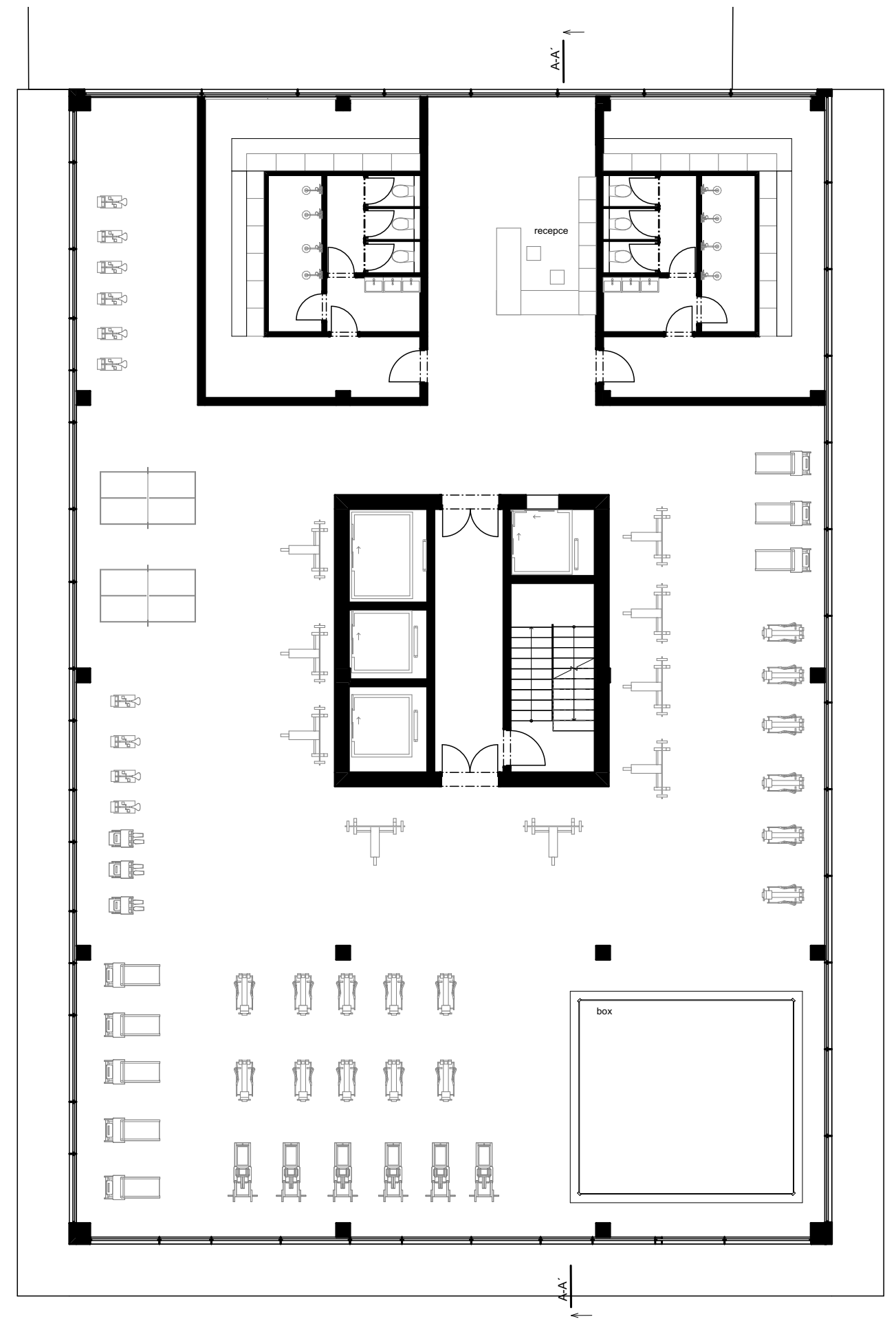
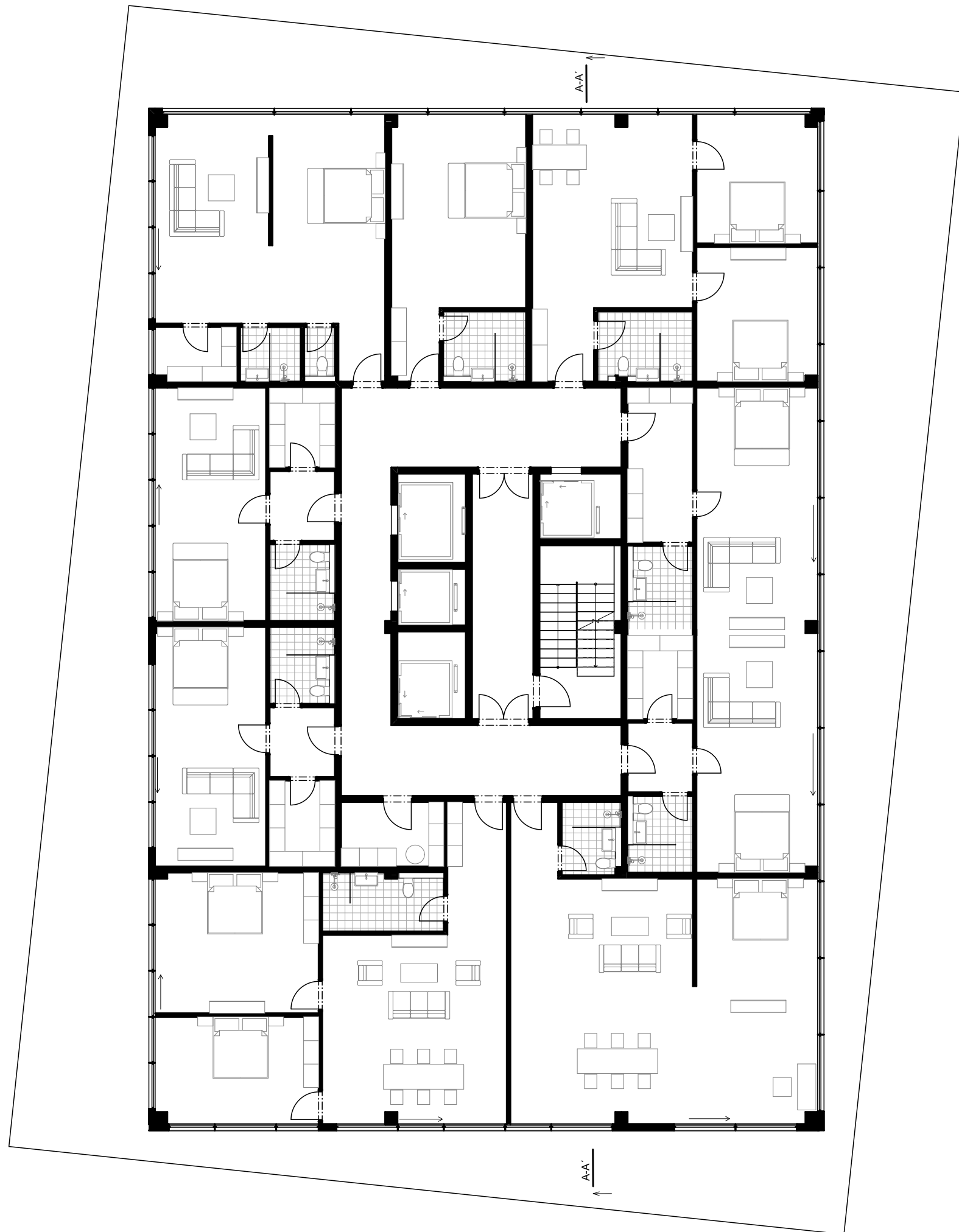


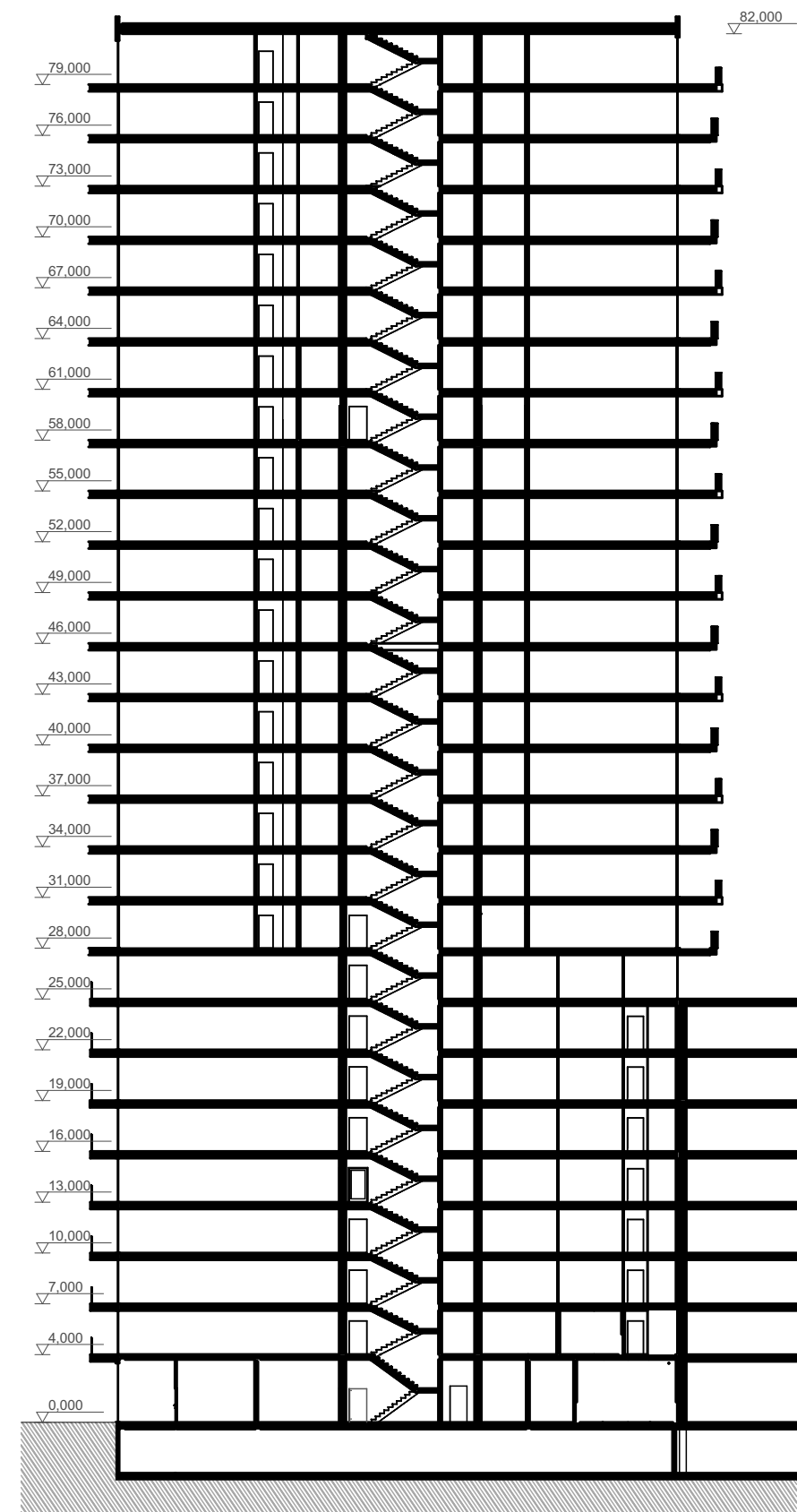
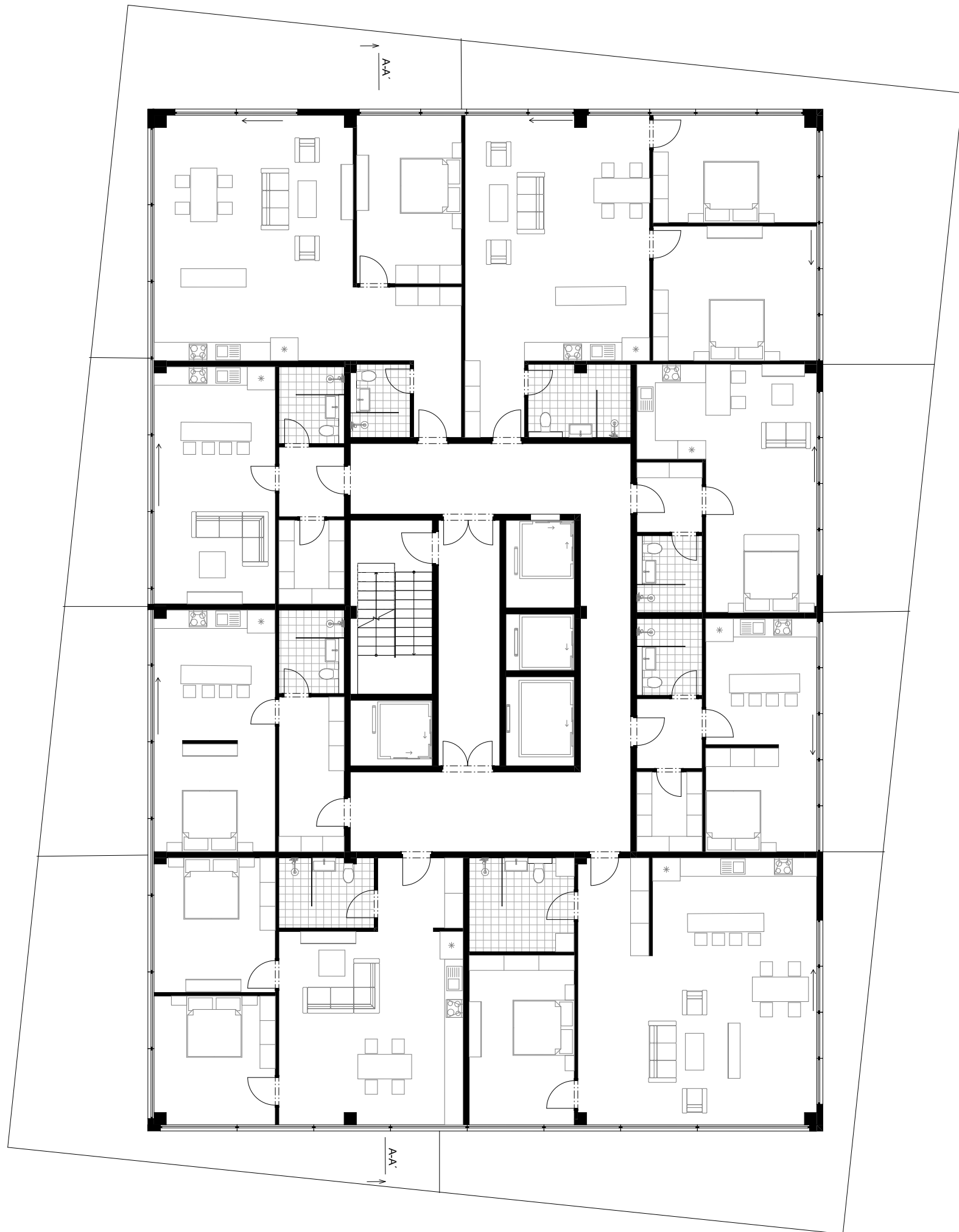
GROUND FLOOR

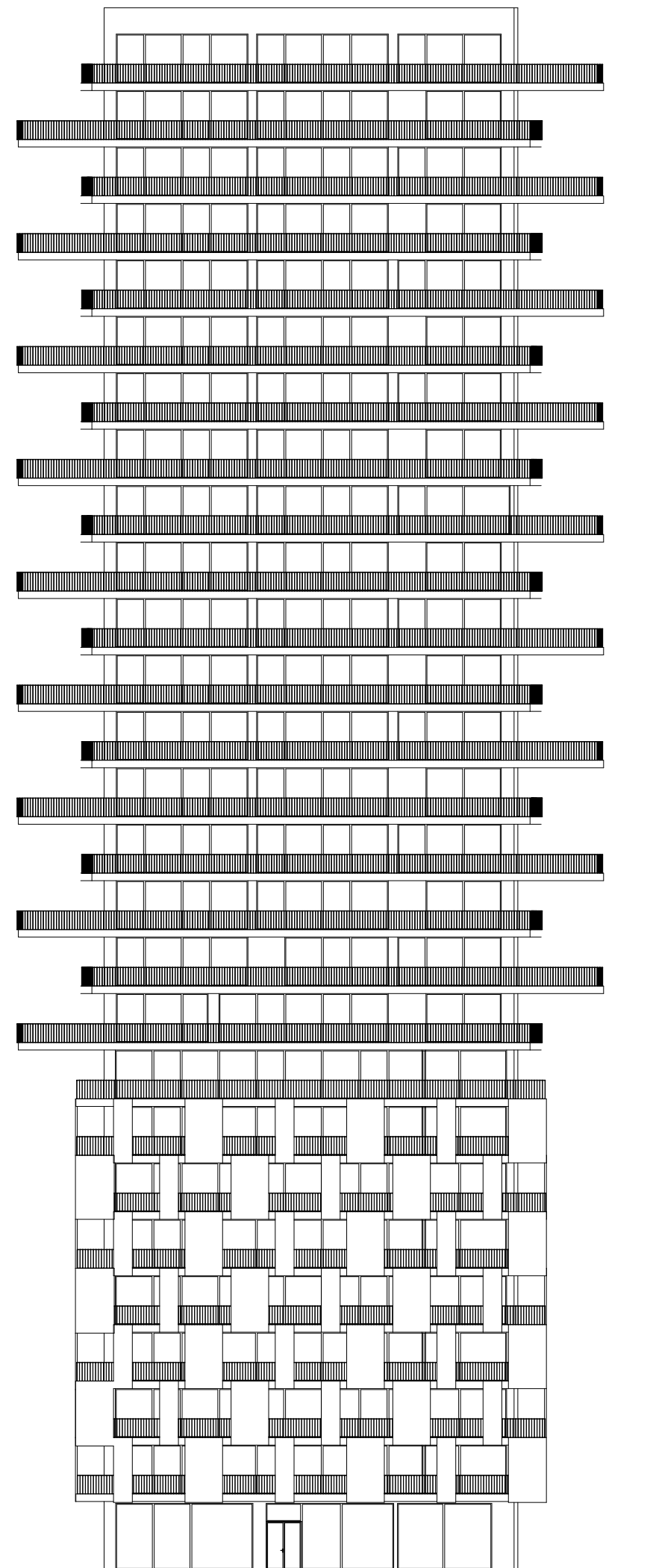




250

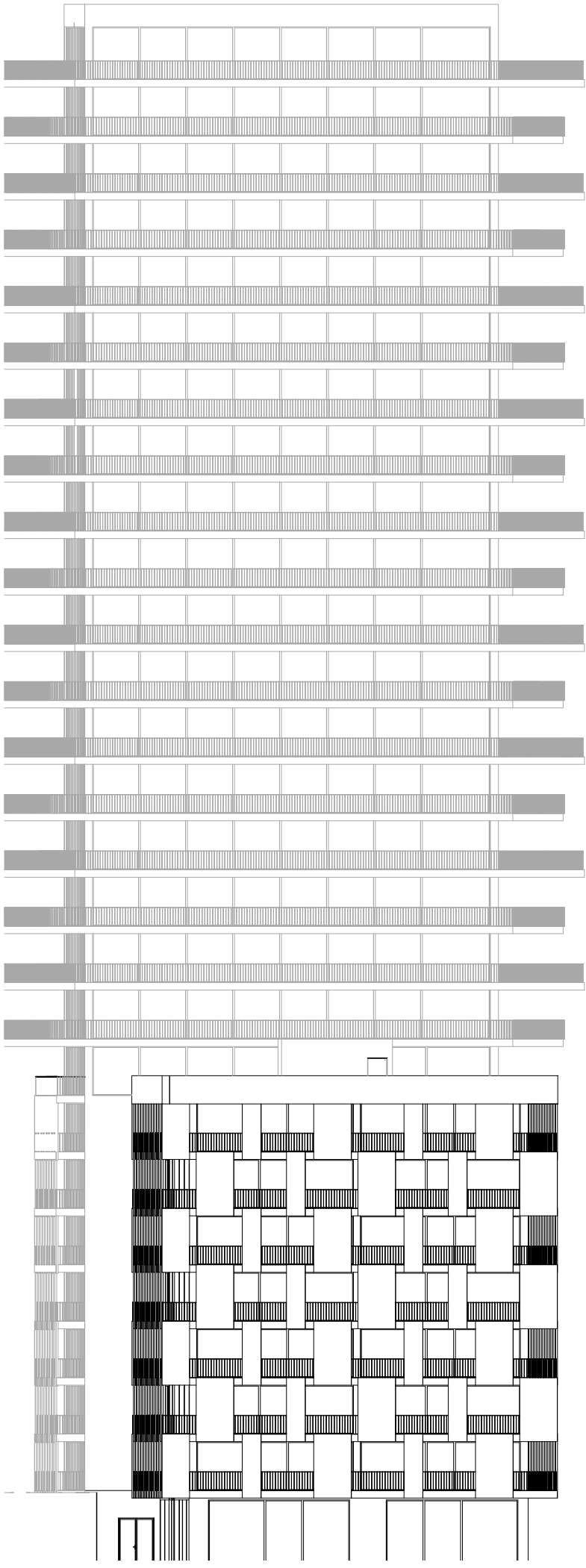






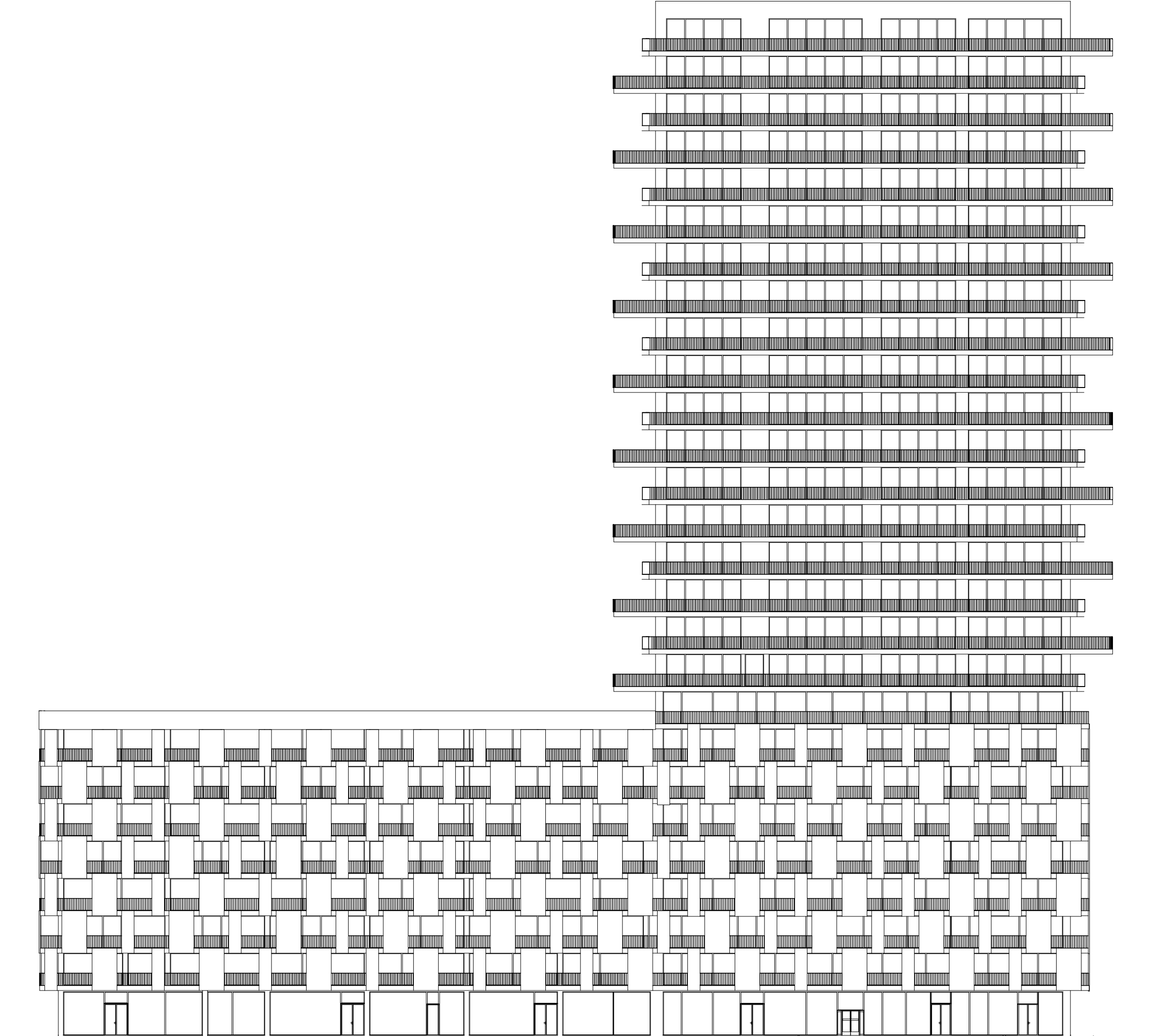
SOUTH ELEVATION

1:300

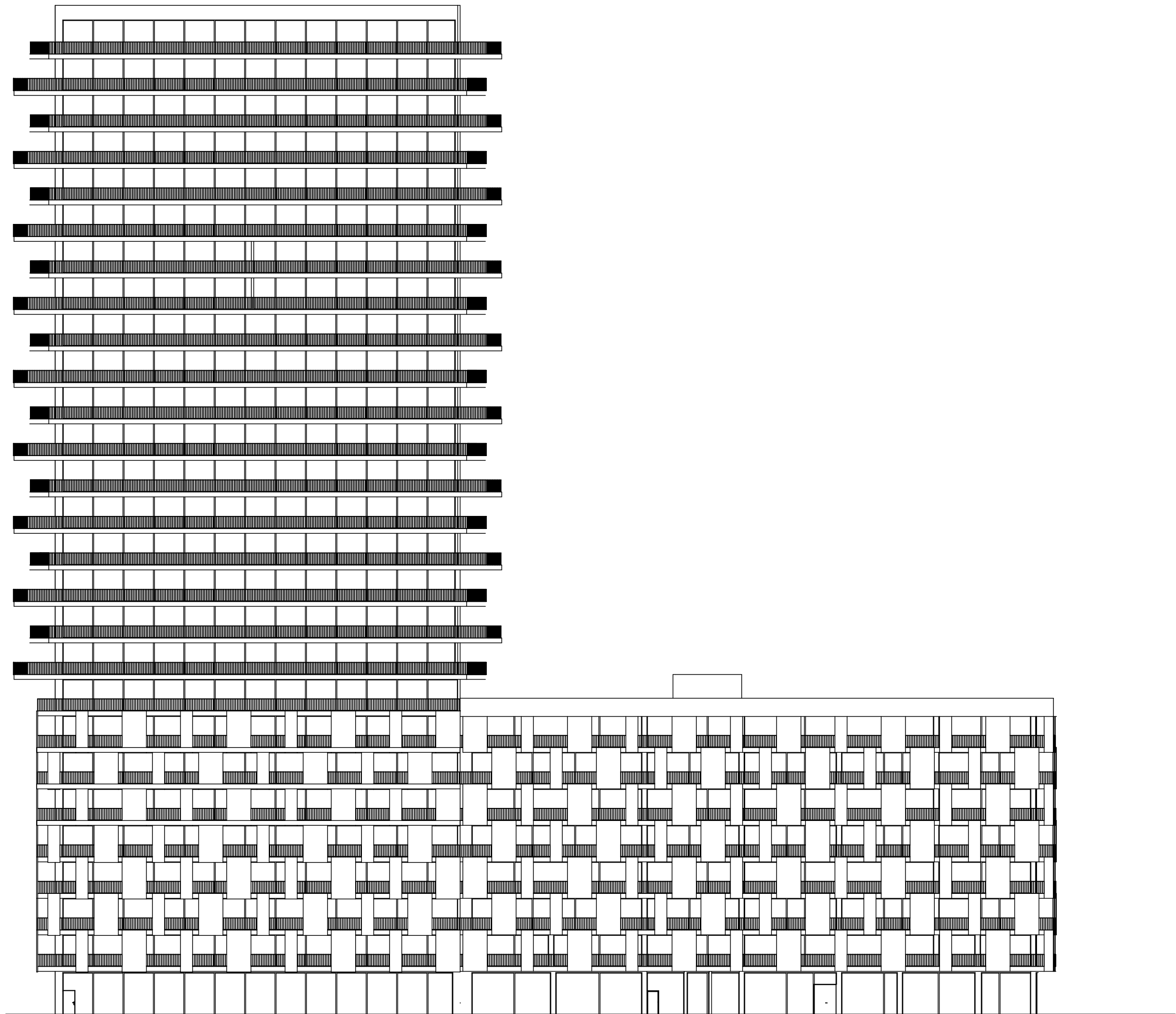


NORD ELEVATION

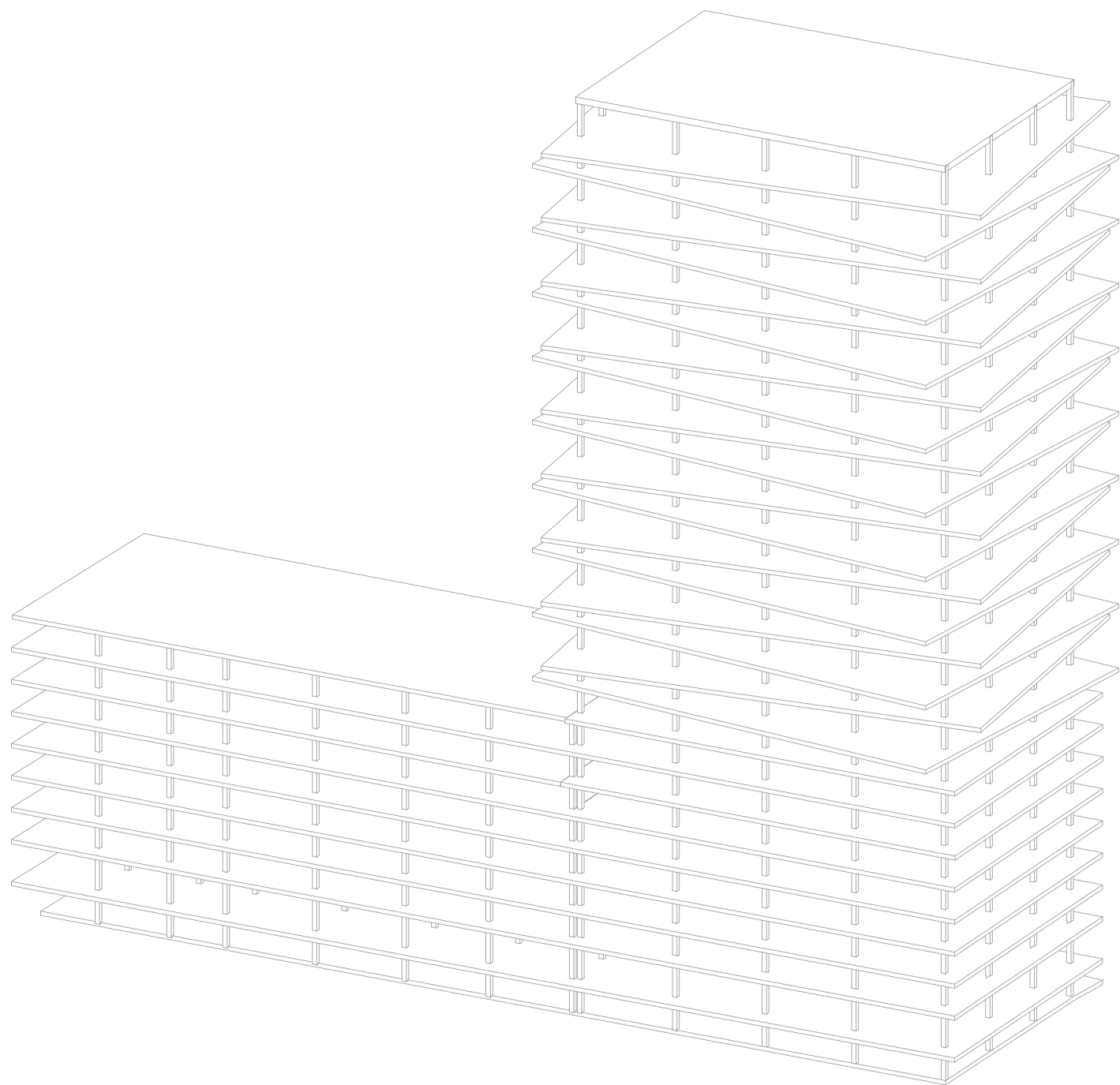
1:300



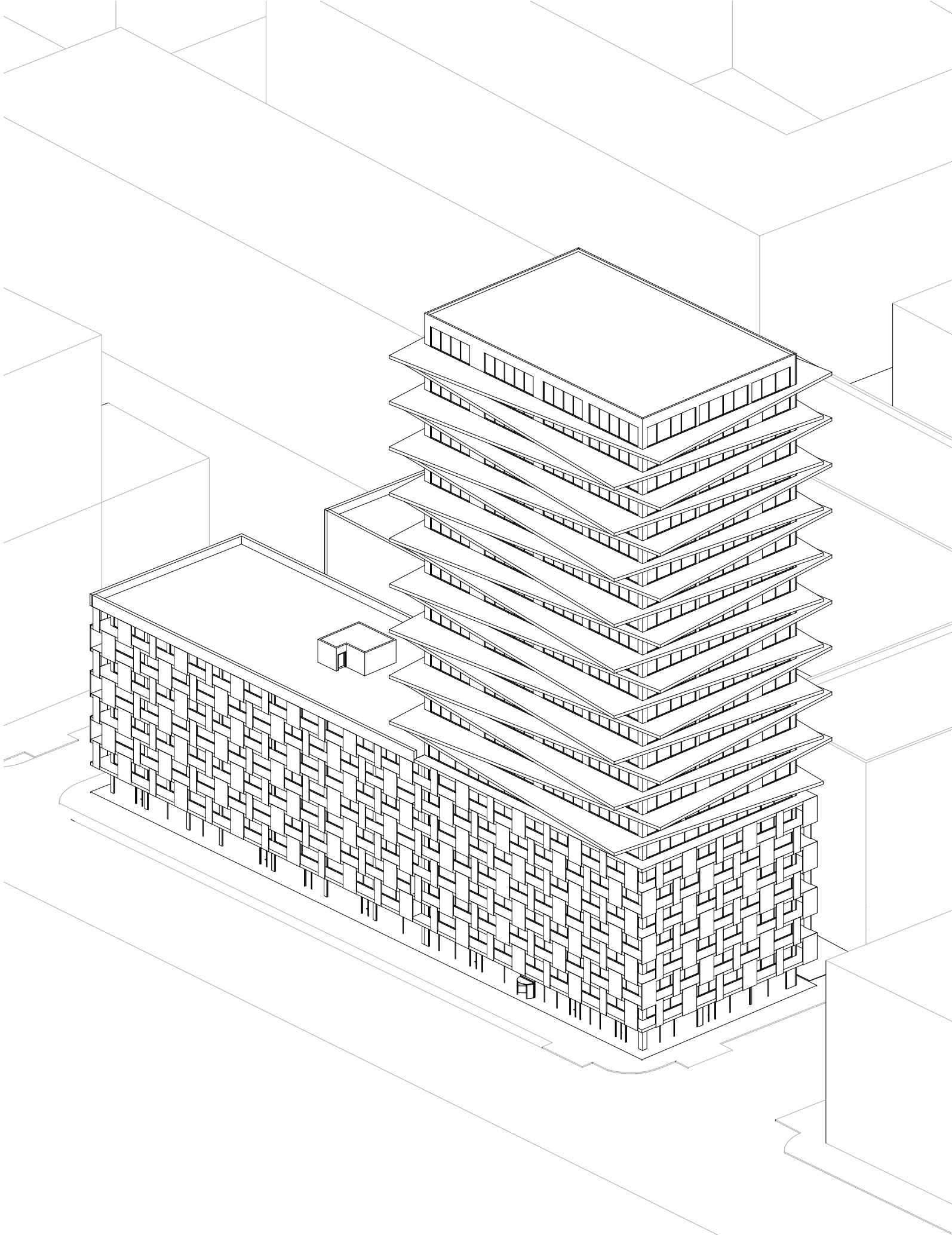
WEST ELEVATION



EAST ELEVATION



CONSTRUCTION Moment resisting frames

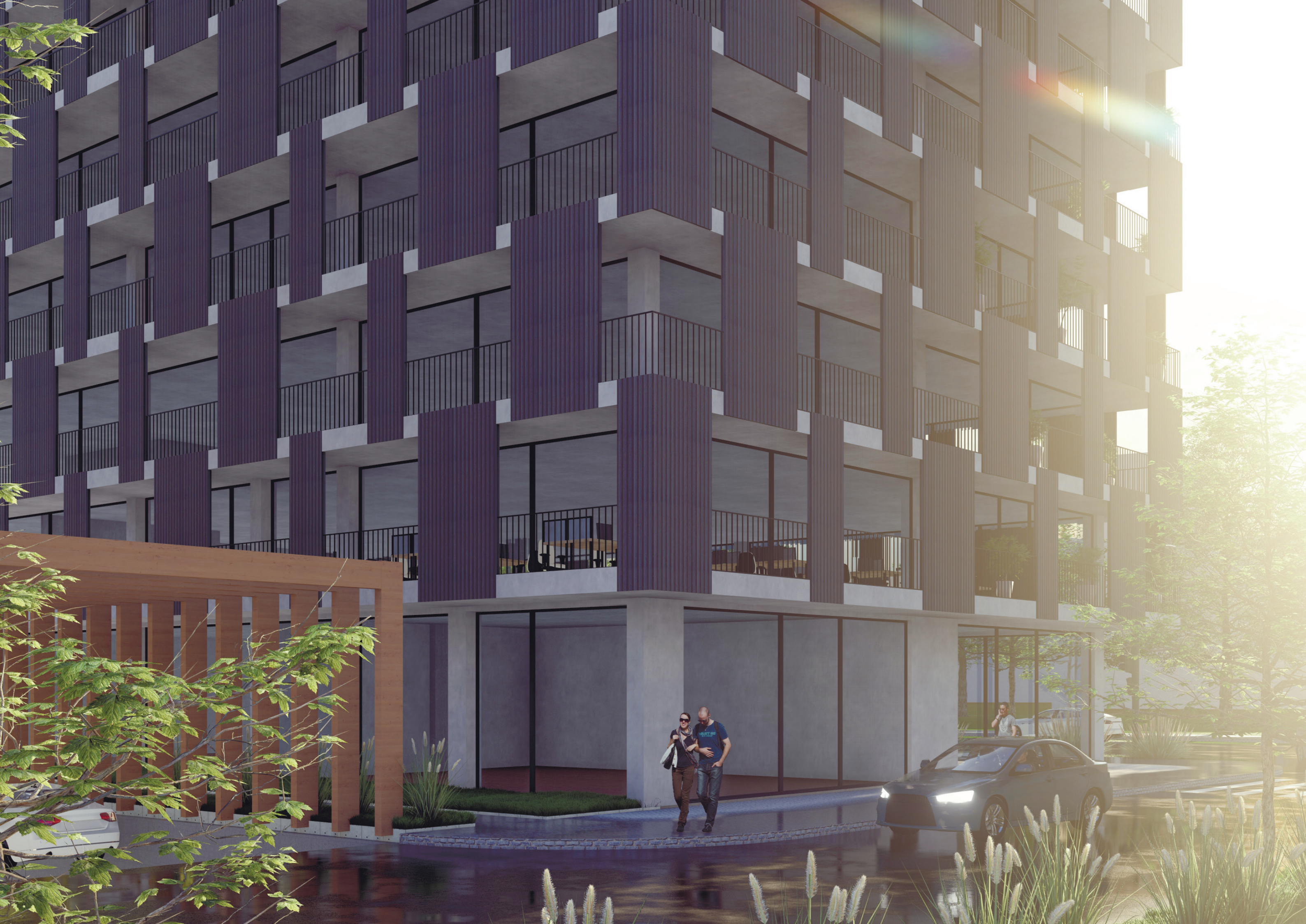


AXONOMETRY

VISUALISATION









RESTAURANT

Iana Lauda
2022