

SWITCH ON STRAHOV

ATELIÉR REHWALDT - CONCEPCION , KLOKOČKA - ZDRÁHALOVÁ

AT II, LS 2021/2022

TINA MÁLKOVÁ



Context of solved area

The Strahov Stadium is located in Prague 6 on a hill 327 m high. In its vicinity there is the Petrin Lookout Tower, which immediately houses the Petrin Gardens. Together with these, they are a very popular place not only for the inhabitants of Prague, but also for tourists.

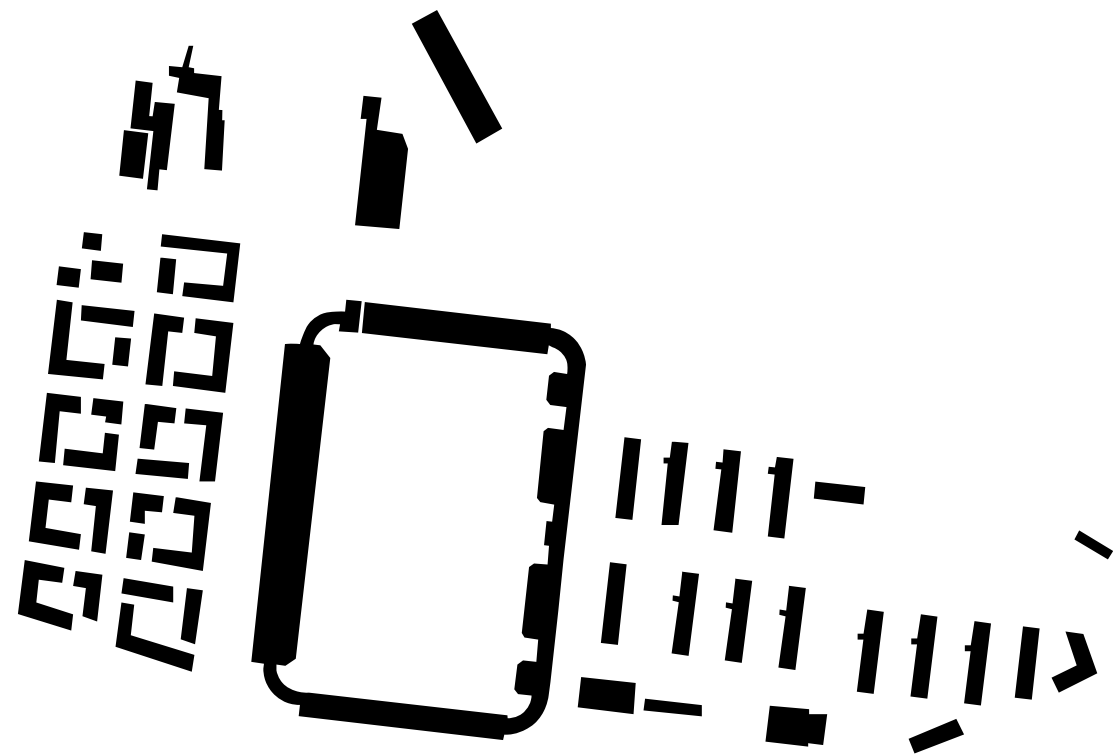
There is also a CTU dormitories nnext to the Strahov Stadium. They provide beds for approximately 4,700 students. At present, students are the only ones who bring to this hill of life.

On the west side of the stadium is the Evžen Řošický Stadium and on the north side is the Athletics Hall. There are many other courts on the hill (especially football), but there are also private tennis courts.

As for transport, it is a bit more complicated due to the fact that it is located on a hill, so there is no metro or tram. You can get here by public transport only by bus or cabin car (very used by tourists), which leads to the Petrin tower.

Urban conception :

The field of the Strahov Stadium was designed into the urban conception of Yvonne Kuo and Vendula Hladoníková, „Old New Strahov“.

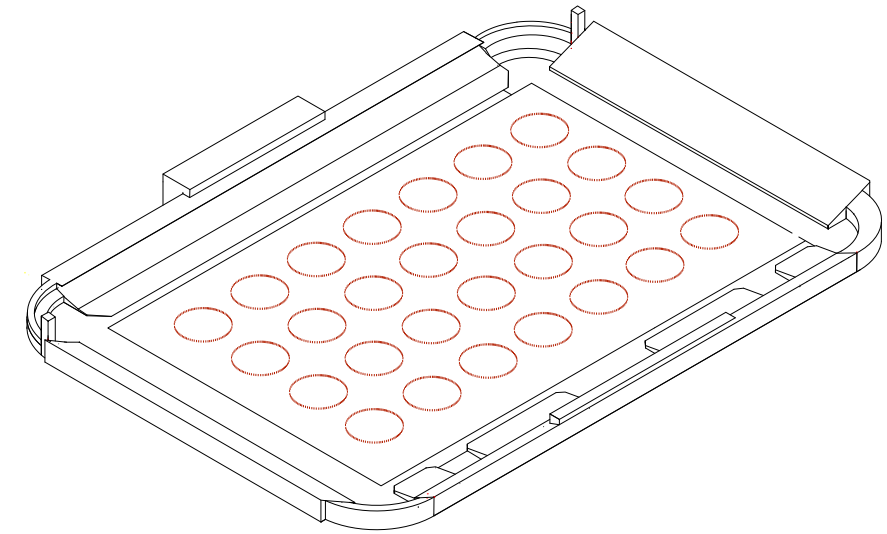


scheme od urban conception by Yvonne Kuo and Vendula Hladoníková



PAST

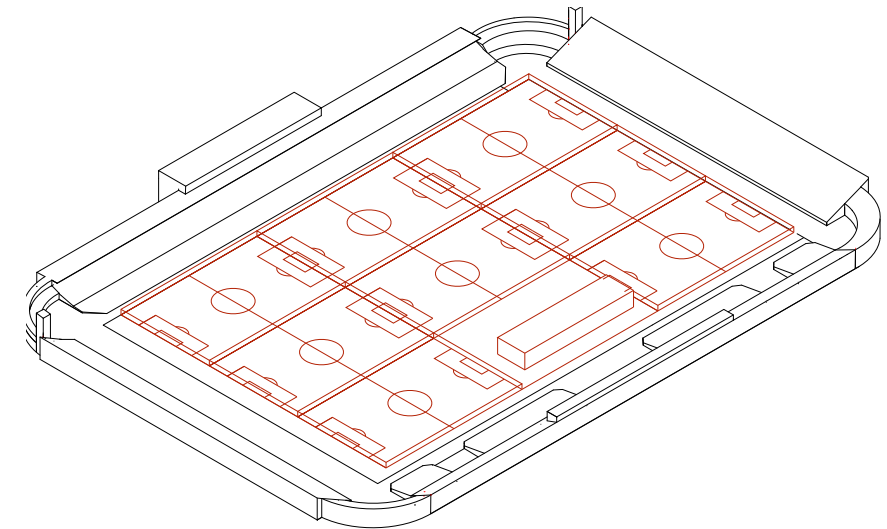
The Strahov Stadium was built for the Sokol rallies. In 1926, a series of Sokol rallies began. In 1955, due to the communist regime, the Sokol rallies were replaced by the Spartakiad till 1985. After 1989, several rock concerts took place at the stadium, the largest of them were the Rolling Stones (1995) and Pink Floyd (1994) with a capacity of over 100,000 people.



PRESENT

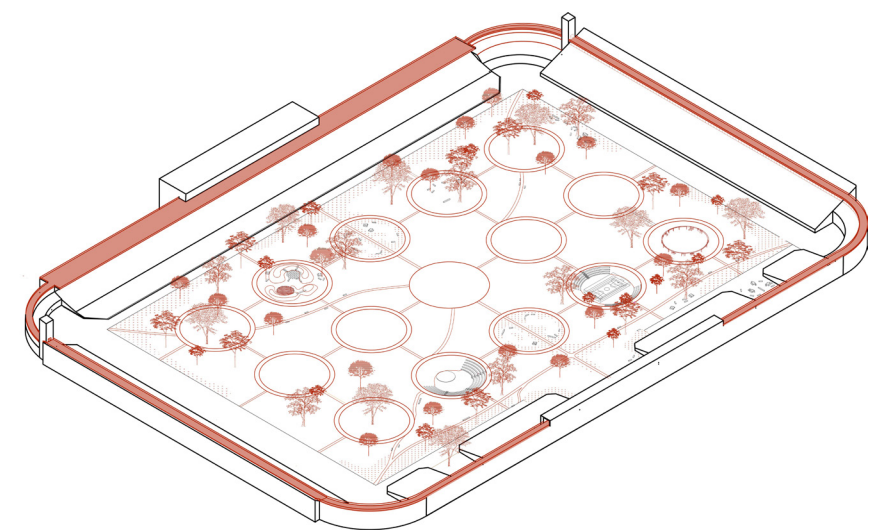
The stadium currently rents the AC Sparta Prague football club. The club uses the stadium as a training area. He had 8 football fields and one administrative building built here.

Stadium tribunes they are in poor condition. Outside, the stadium is spray-painted with graffiti. It is currently closed to the public.

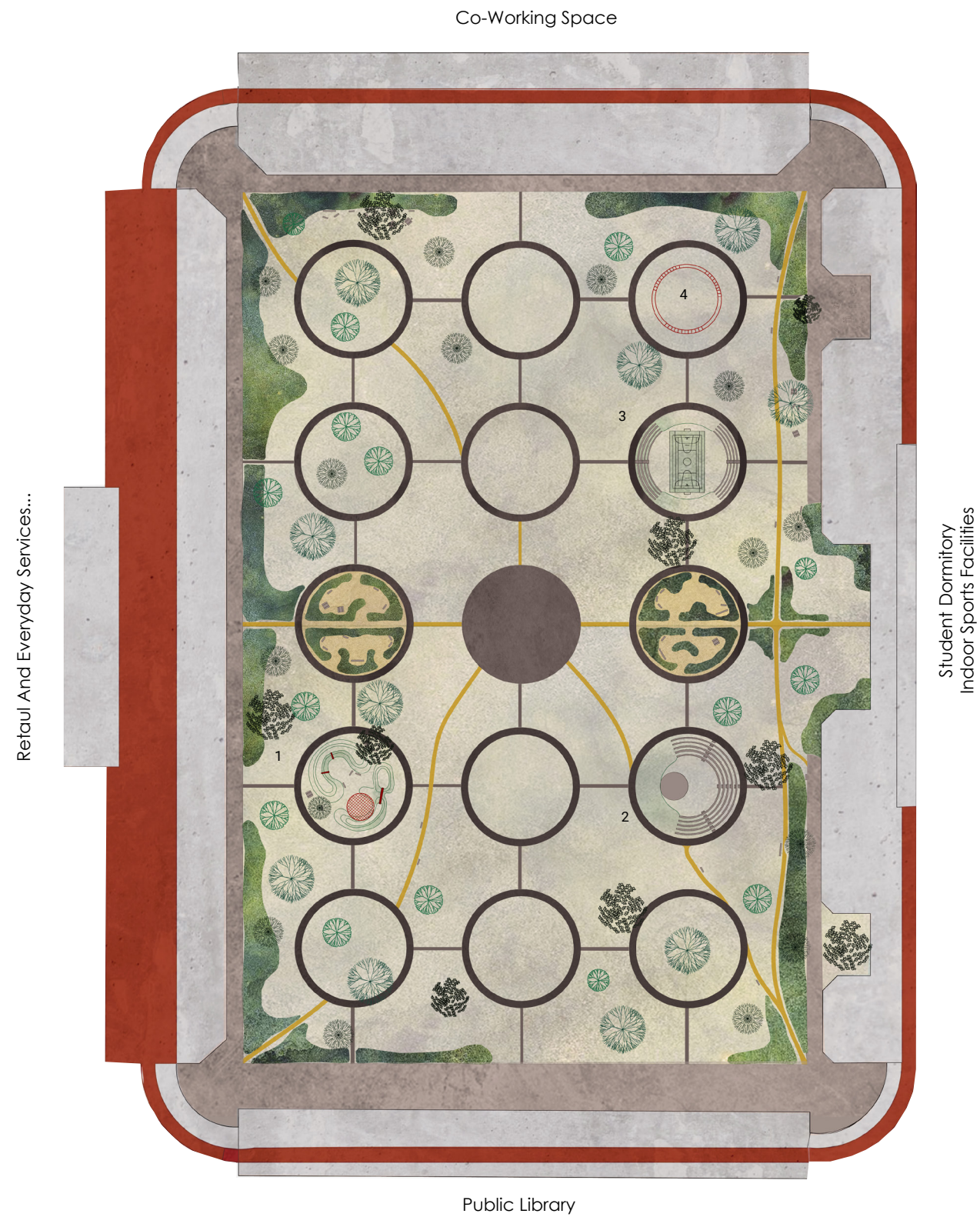


FUTURE (proposal)







The design was inspired by the history of the stadium, especially by the pattern created by the trainees at the Sokol rallies and Spartakiads. The main feature of the design is the circular pattern. The diameter of one circle is 42m. This allows you to bring functions such as an affair or a multifunctional playground into individual circles. This brings diversity and more leisure to the whole place. The design is also complemented by a "walking ring" circuit on the roof of the stadium, from which there is a beautiful view of Prague, but also the interior of the stadium and its pattern.

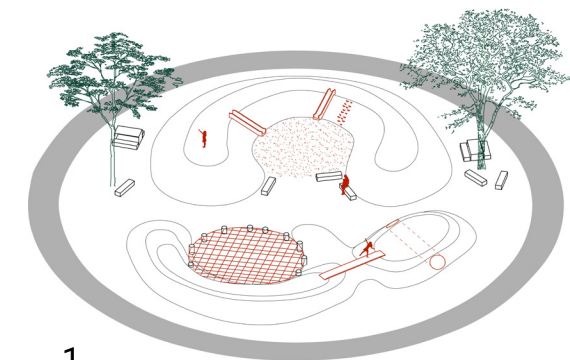






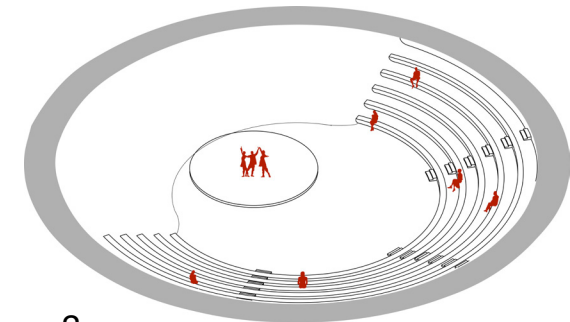
LEGEND :

-  Grass flower beds
-  Lawn
-  Tree
-  " Walking ring " : red concrete
-  Concrete
-  Gravel path



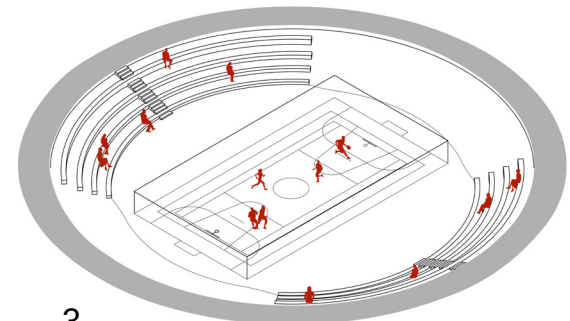
1.

Playground :
children's playground has a natural character thanks to the terrain. Two hills 1.7 m high were created here. These hills not only serve as a basis for various structures such as children's slides, but also form an interesting game element in itself.



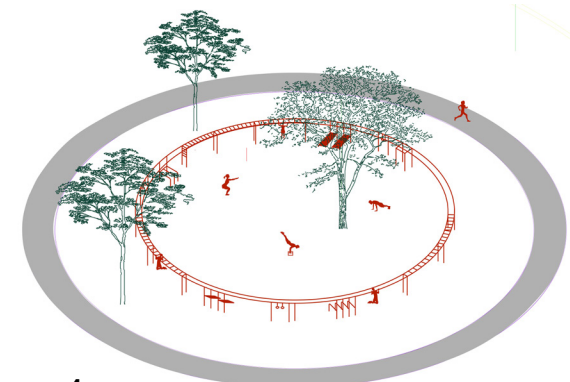
2.

Amphitheater:
It offers many functions, for various performances, concerts, but also lectures. It can also be turned into a summer cinema, and when nothing is happening, it provides plenty of seating. The amphitheater is 3m deep.



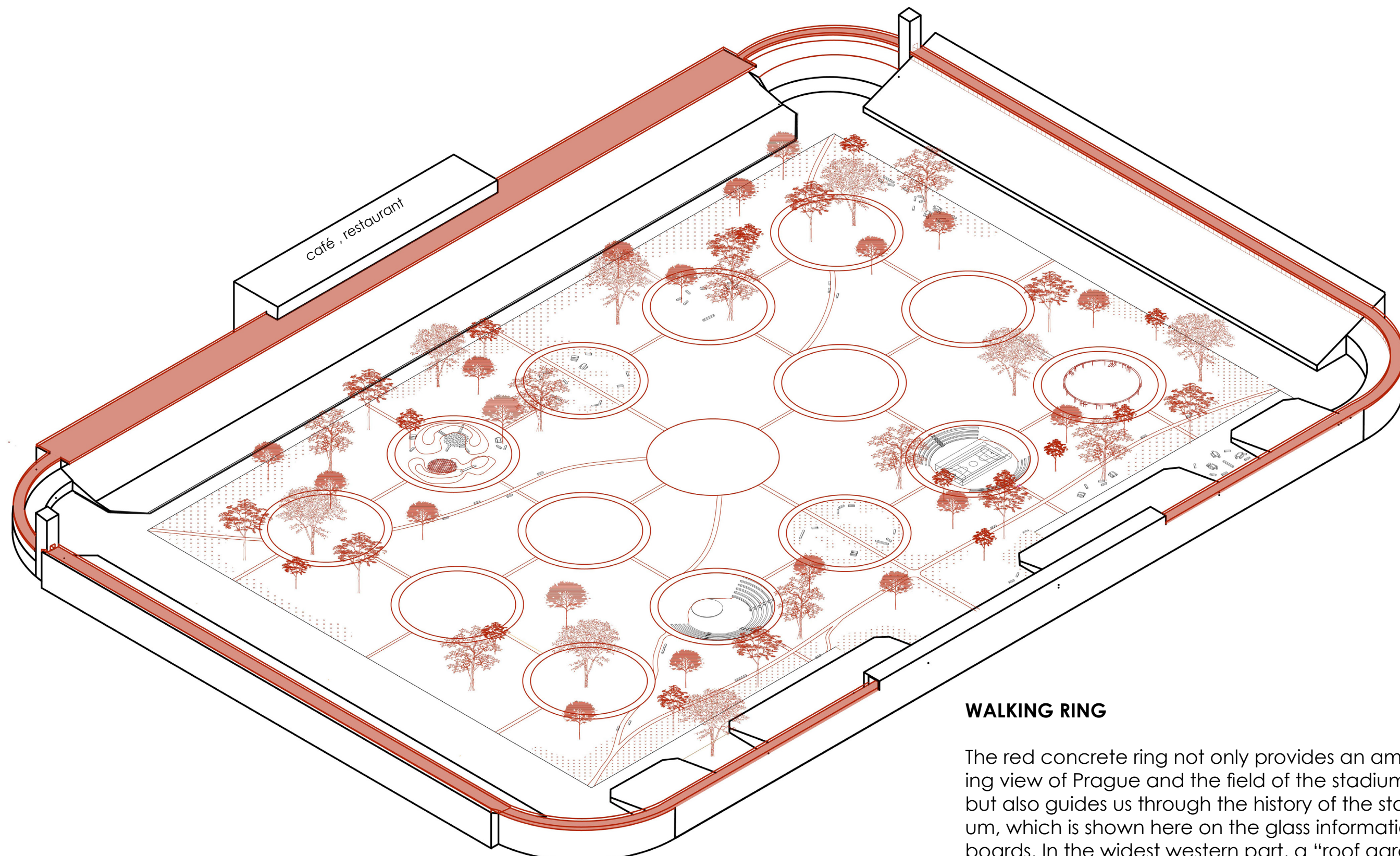
3.

Multifunctional playground:
The 25m long course allows you to play Volleyball, Soccer and Street-ball. The course is as deep as the amphitheater 3m deep. Thanks to this, the fencing is hidden and thus does not disturb the openness of the stadium.



4.

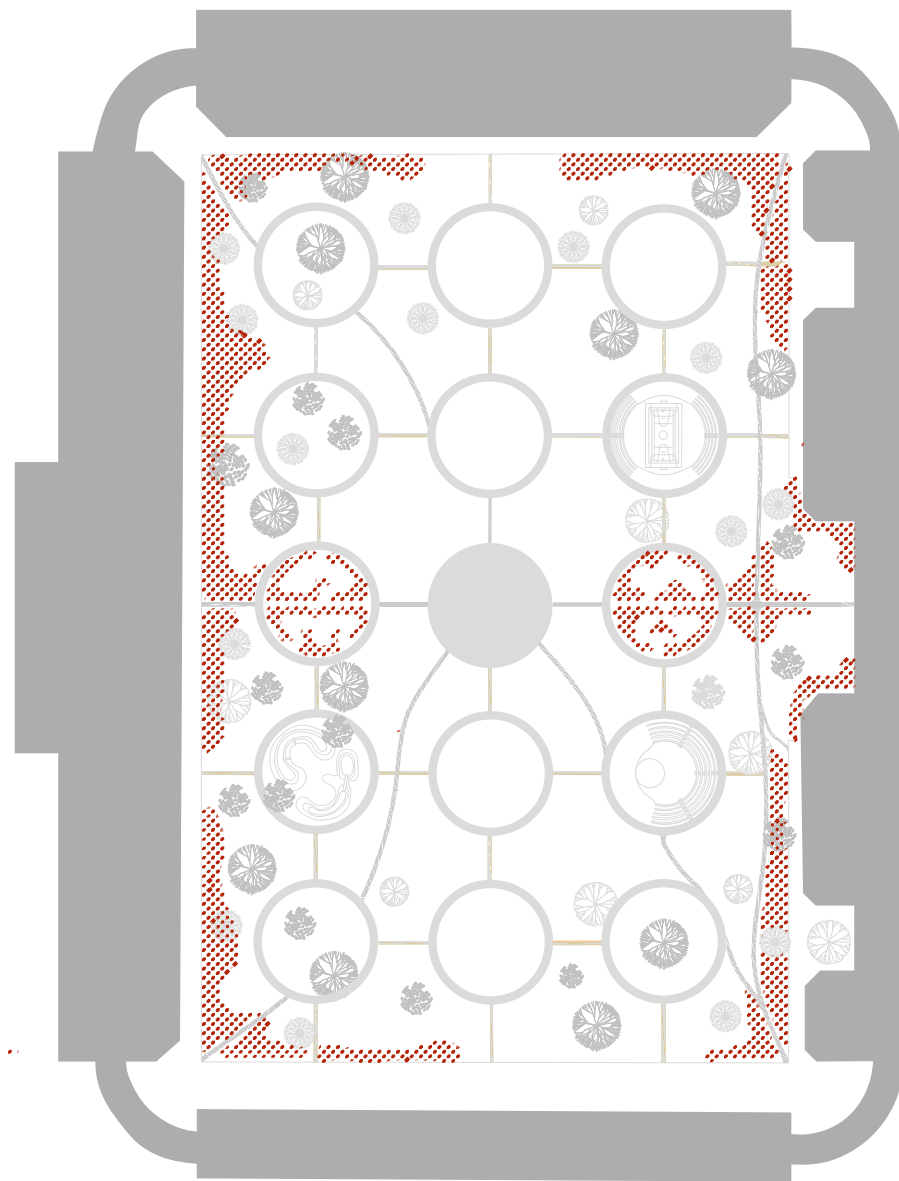
Workout playground:
The circular design follows. It contains many workout bars, ladders and seats for sit-ups. On warm summer days, the playgrounds provide shade from the treetops.



WALKING RING

The red concrete ring not only provides an amazing view of Prague and the field of the stadium, but also guides us through the history of the stadium, which is shown here on the glass information boards. In the widest western part, a "roof garden" is created where it is possible to sit and, thanks to the facilities of the café and restaurant, refresh yourself here.

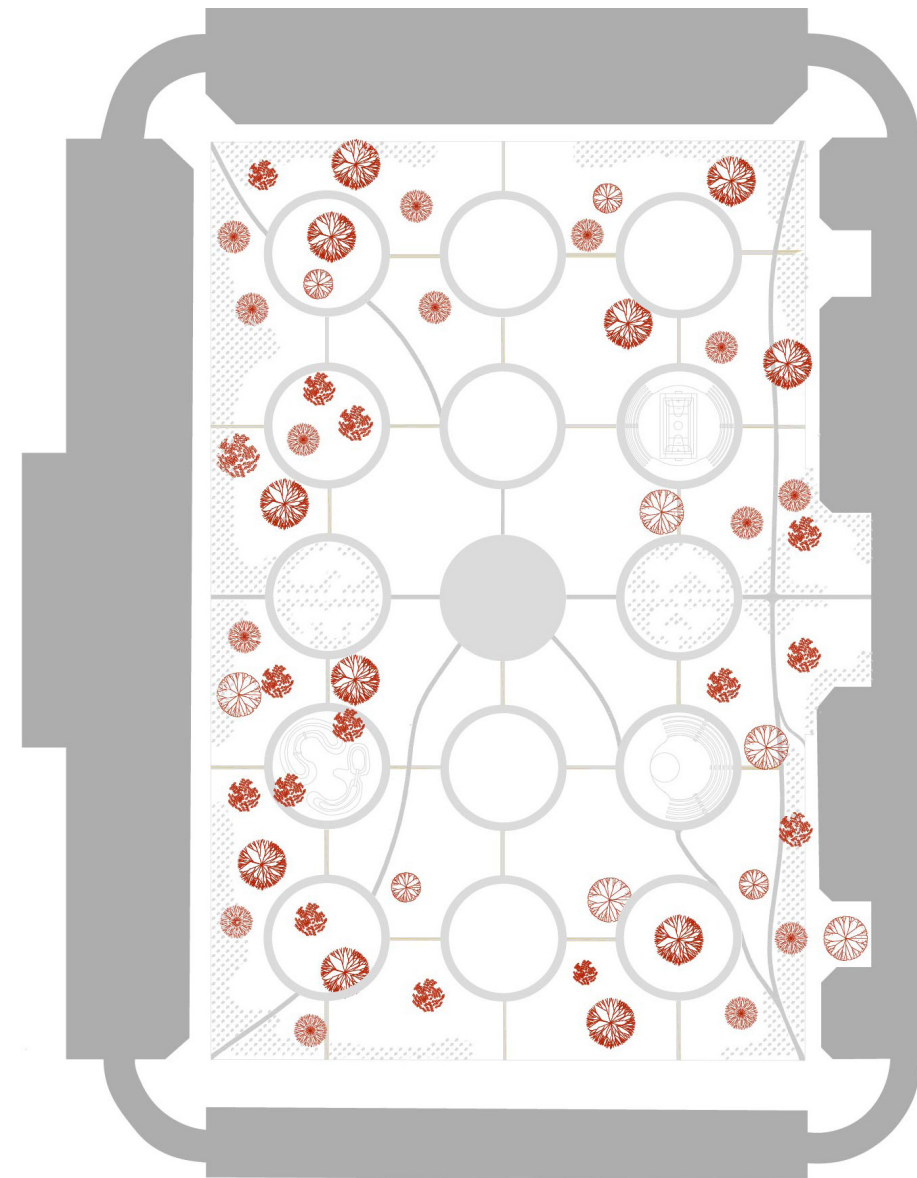




With the help of grassland, an imaginary edge frame was created, which creates more privacy for park visitors, and at the same time defines the space. The grassland was chosen for its simplicity. It brings a new structure to the space, a new height. At the same time, thanks to its simple appearance, it does not compete with its surroundings.



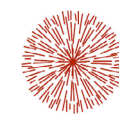
autor : SLA - project „Charlotte harden“



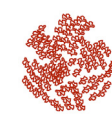
Trees bring human scale to space. It creates a more pleasant environment. They improve the microclimate and support biodiversity.

The trees form a wide outer edge and the main axes remain empty. The absence of trees in the main axes is mainly due to the experience of the stadium's monumentality. From one place we have so we get a clear view.

The individual tree species were selected according to the fact that they did not exceed the height of the stadium too much (22 m) and thus did not compete too much with its monumentality.



*alnus
incana*



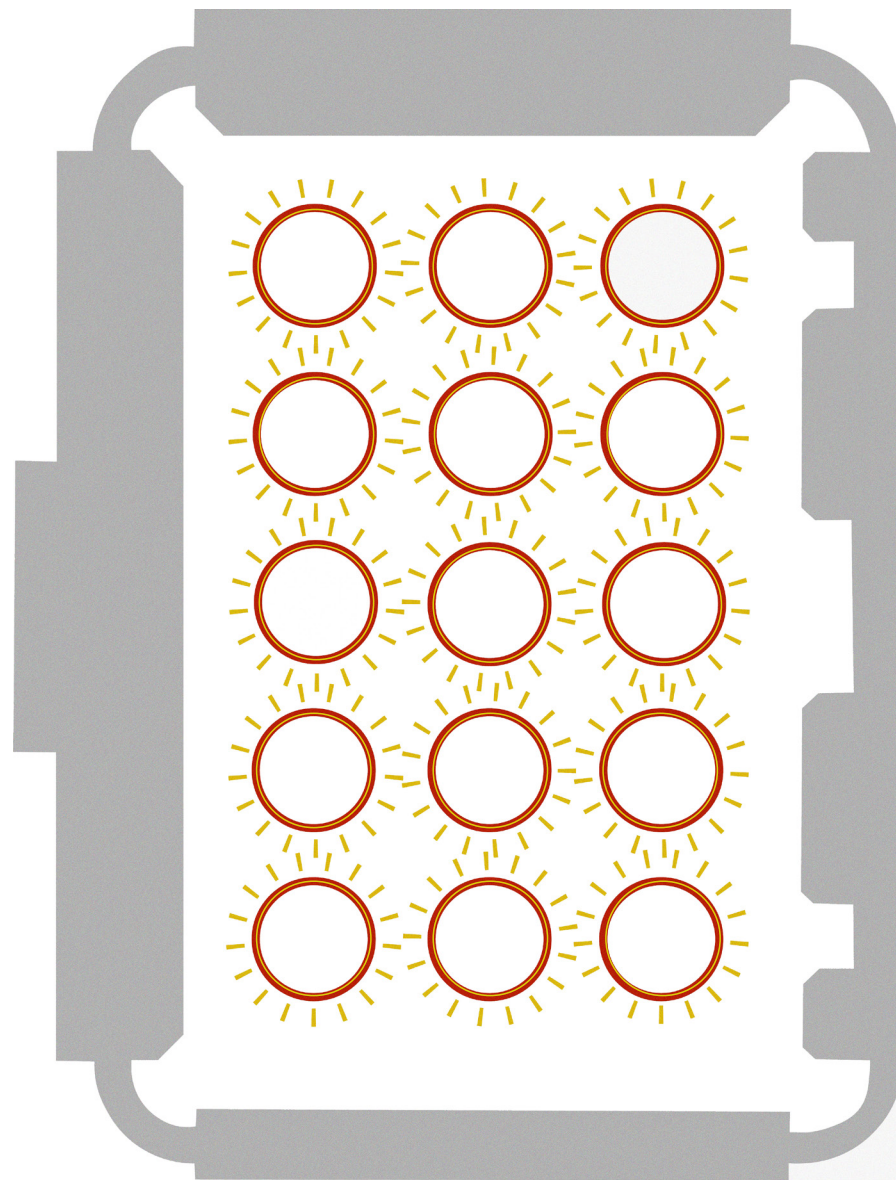
*sorbus
aucuparia*



*acer
campestre*



*ulmus
dodoens*



The circles are complemented by a strip surface light. At night, it highlights the entire circular pattern.

