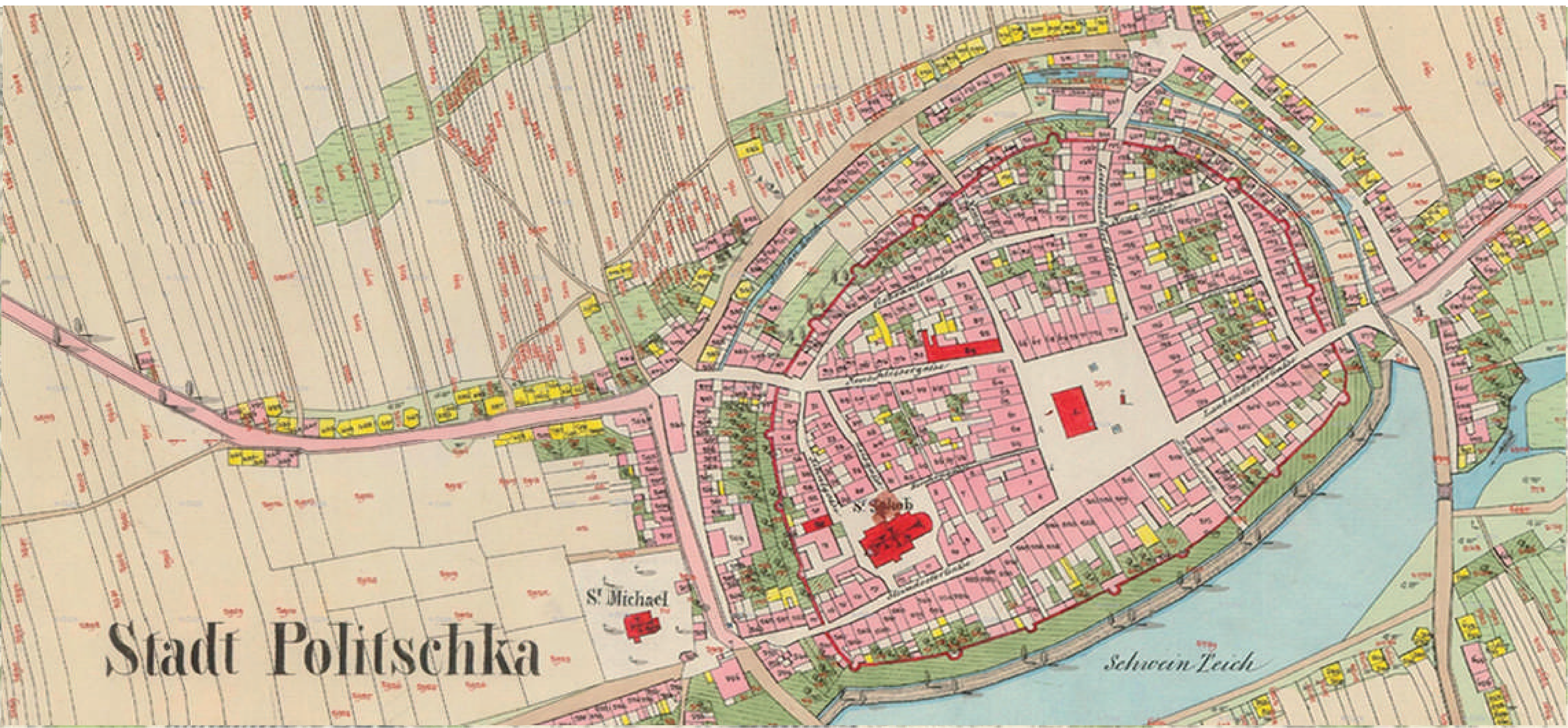




POLIČKA REGION

POLIČKA REGION - HISTORICAL TOWN POLIČKA

VERNACULAR ARCHITECTURE HERITAGE DESIGN STUDIO  
POLIČKA REGION, SUMMER SEMESTER 2022



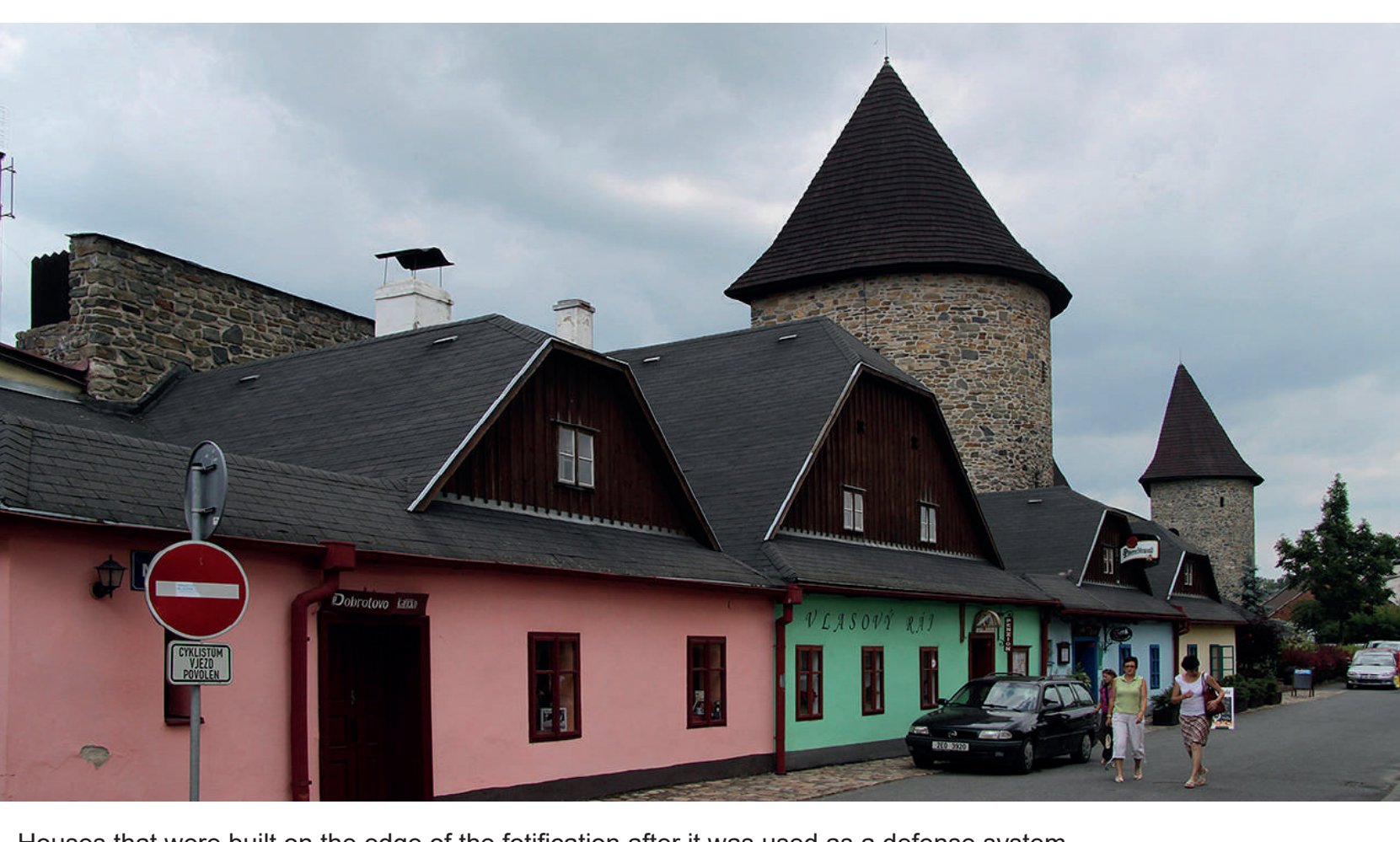
Czech Republic districts division with Polička highlighted in red.



Polička after 1744 - Baroque appearance of the town during its golden age

Polička was founded in 1266 and it is located in the district of Svitavy in the eastern part of Bohemia, near the border with Moravia, in the basin at Bílý potok, about 17 km west of Svitavy. The historic core is a city monument zone that has several historical landmarks.

The obvious reason for the foundation was the strengthening of royal power in this farthest tip of eastern Bohemia.



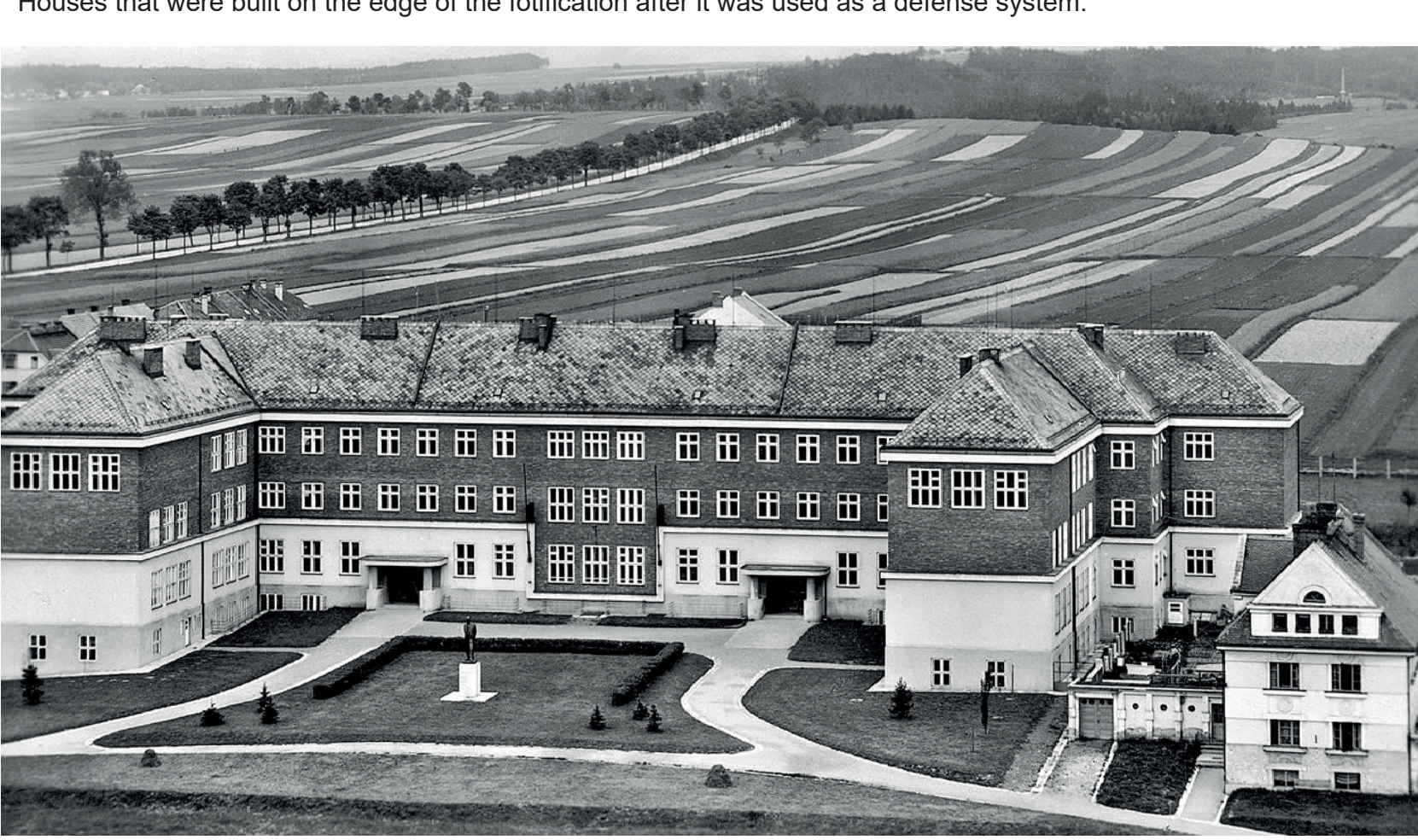
Houses that were built on the edge of the fortification after it was used as a defense system.



Entrance to the city cross the fortification

Polička's fortification was built when the city was founded but it was made of wood until Charles IV. After the thirty years war the walls were not functional anymore but they never got demolished and the fortification has been preserved.

The sections of the walls between the towers called kurtiny reach a length of 42 to 46 m. Only on the southern side protected by the pond the distance fluctuated from 48 to 78 m.



Old picture of Masaryk School



The corner house No. 389 located in the New District.

In 1990, Polička was declared a town monument zone, and in the same year, on the occasion of the 100th anniversary of B. Martin's birth. Nowadays the town has some important landmarks in which we can find the townhall, the old fortification, St. James church, the New District etc.

