



**URBAN PERMACULTURE GARDENS
BUDĚJOVICKÁ - PRAHA 4
ATU | LS2022
MARION MICHELE MAYFIELD**

CONTENTS

History and Analysis	6
Concept and Program	18
Visuals	32

Budějovické Náměstí

Budějovická is the name of the Prague metro station, which shares the name of the square located above it. The square is bordered by Olbrachtova, Vyskočilova and Budšovická streets.

Its identity has changed considerably since the area was named in 1941 as the square has undergone many constructions and ill attempts at renovations. The space is a bit of a labyrinth with stairs and ramps leading to the varying levels of the space. The lack of greenery and overall atmosphere is not inviting for a longer visit.

The DBK department store is a highlight of the square, however it is not as visually appealing due to the additions attached to its original structure and design.

The square, in addition to the metro line C, also has a main hub for bus lines. Tram service to the area was discontinued after being diverted when the metro line, and highway was constructed. However, in the new metropolitan plan of Prague, tram service will be restored to this area to the north of the block.

There is great potential for the square, as it is large, but it will require an extensive amount of problem solving and sensitivity to create a pleasant experience.



DBK

A brutalist structure designed by architect Věra Machoninová, the large structure has eight floors, only four of which are full floors. Construction began in 1971 and completed in 1981. It has since undergone a couple reconstructions which can be viewed as more of a destruction of the original design and accessibility has suffered in the name of being economically viable.

It is recognised as one the most interesting brutalist realisations in Europe. It also once housed IKEA in the mid 1990's.

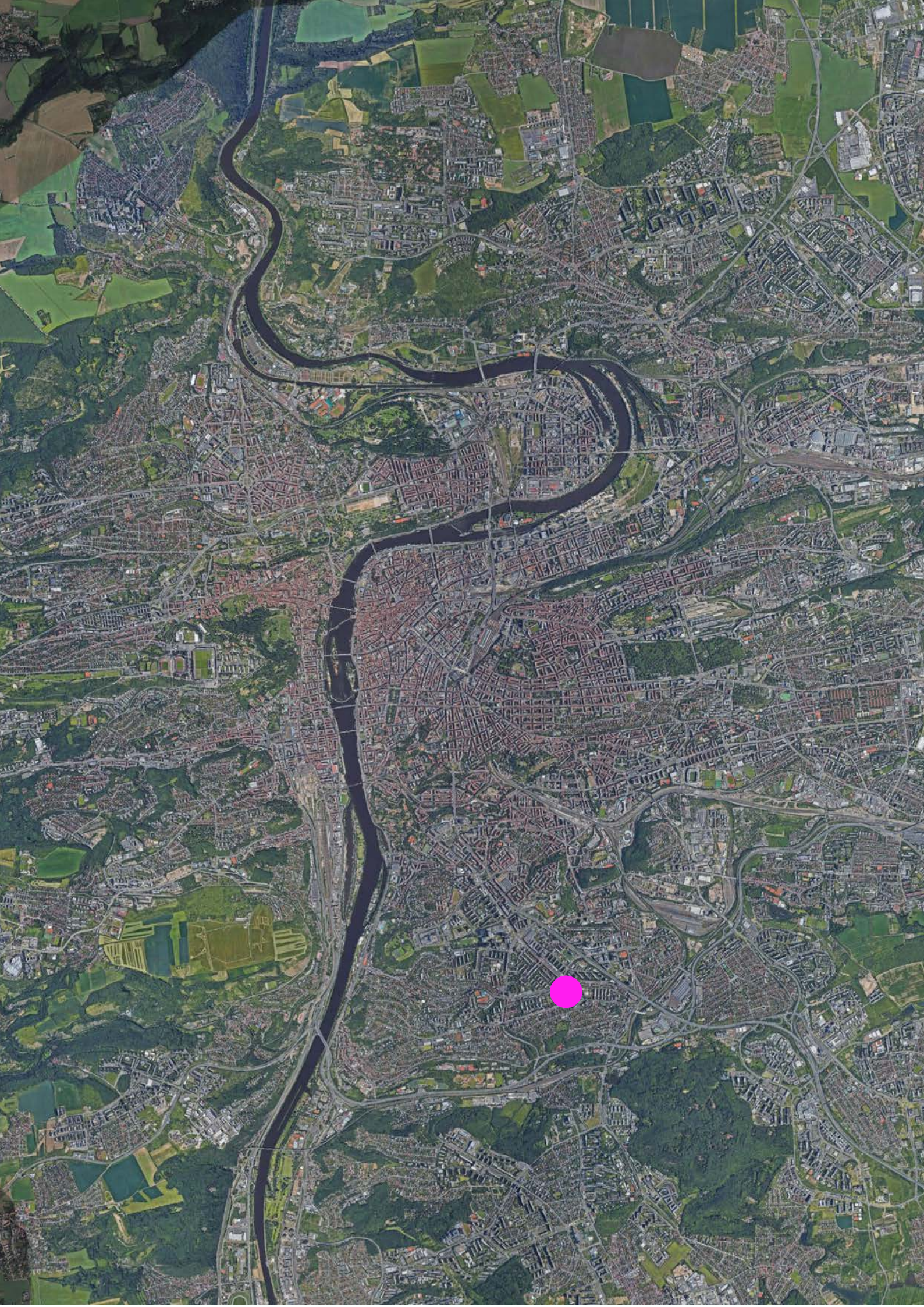
The shell of the structure is composed of Atmofix, which is a Czechoslovak patent, originally used and developed to protect Siberian telegraph poles. It is comprised of steel sheets that form durable rust and prevents further corrosion.

The original landscaping for this structure has since been removed during renovation.



Location

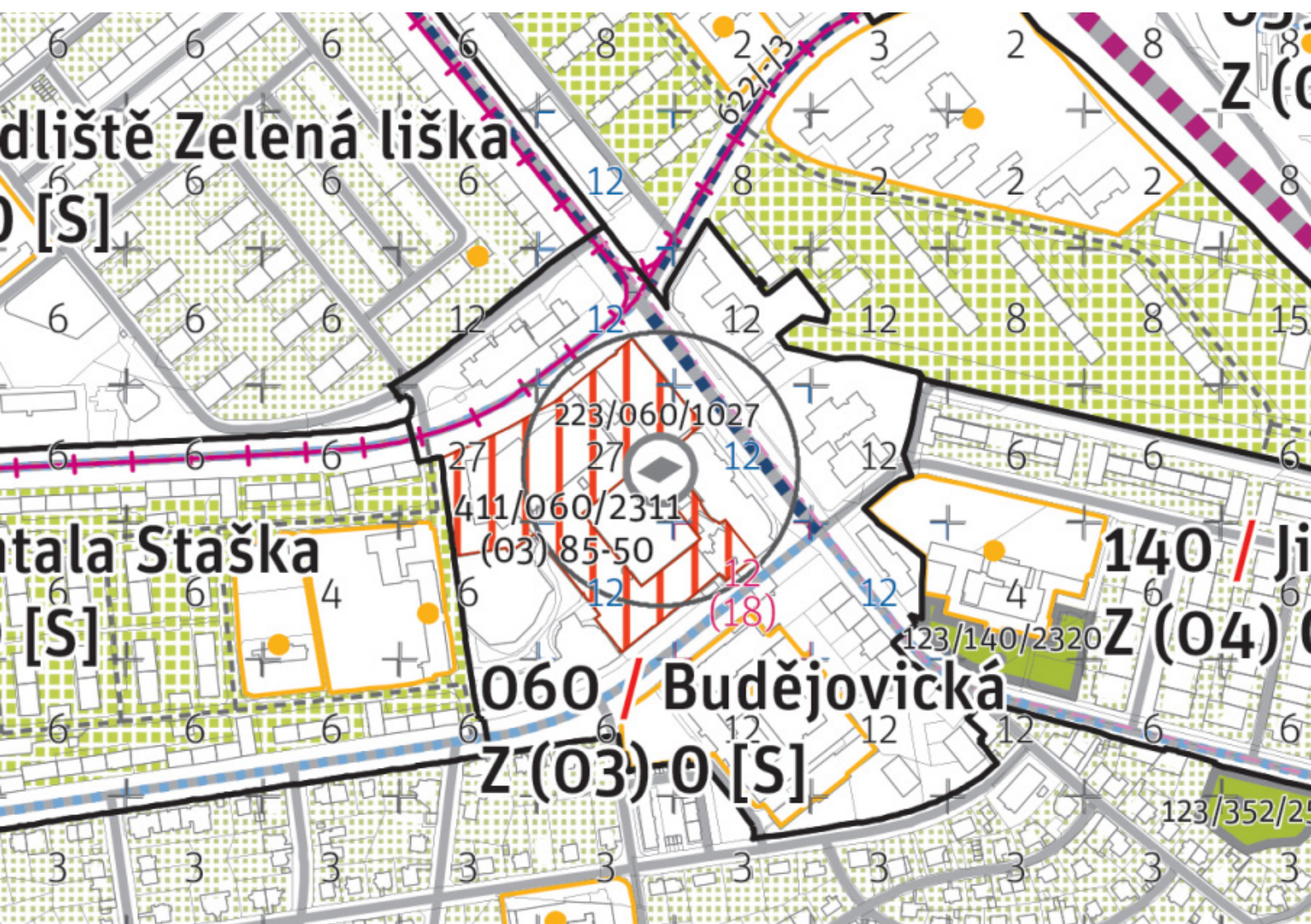
Budějovická is located in Prague 4 to the south and east of Prague city center. Travel time to the location can be as little as nine minutes from the center of Prague via metro line C.








Metropolitan Plan

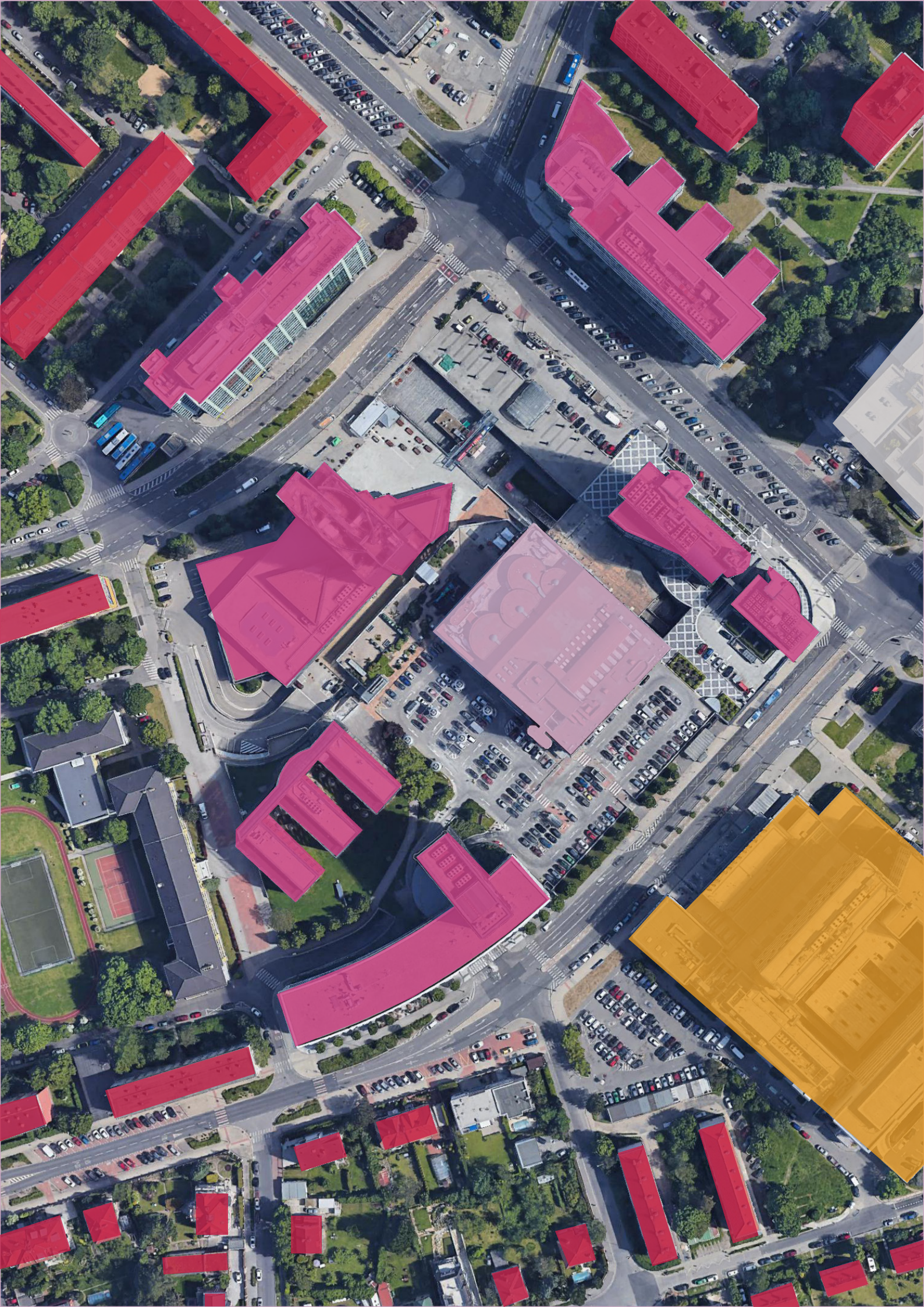
The new Prague metropolitan plan was created in an attempt to simplify the planning process back to its earlier days in the 1930's.

The image on the right is the metropolitan plan for the site. It includes the new tram path to the north of the block and designates the block itself as a build-able transformation area with residential use.







Land Use

-  Administrative Centers
-  Local Shopping
-  Poly-functional Public Services
-  Blocks of Flats
-  Accommodation



Transportation

-  Main Roads
-  Metro Entrances
-  Bus Stops
-  Parking

Concept

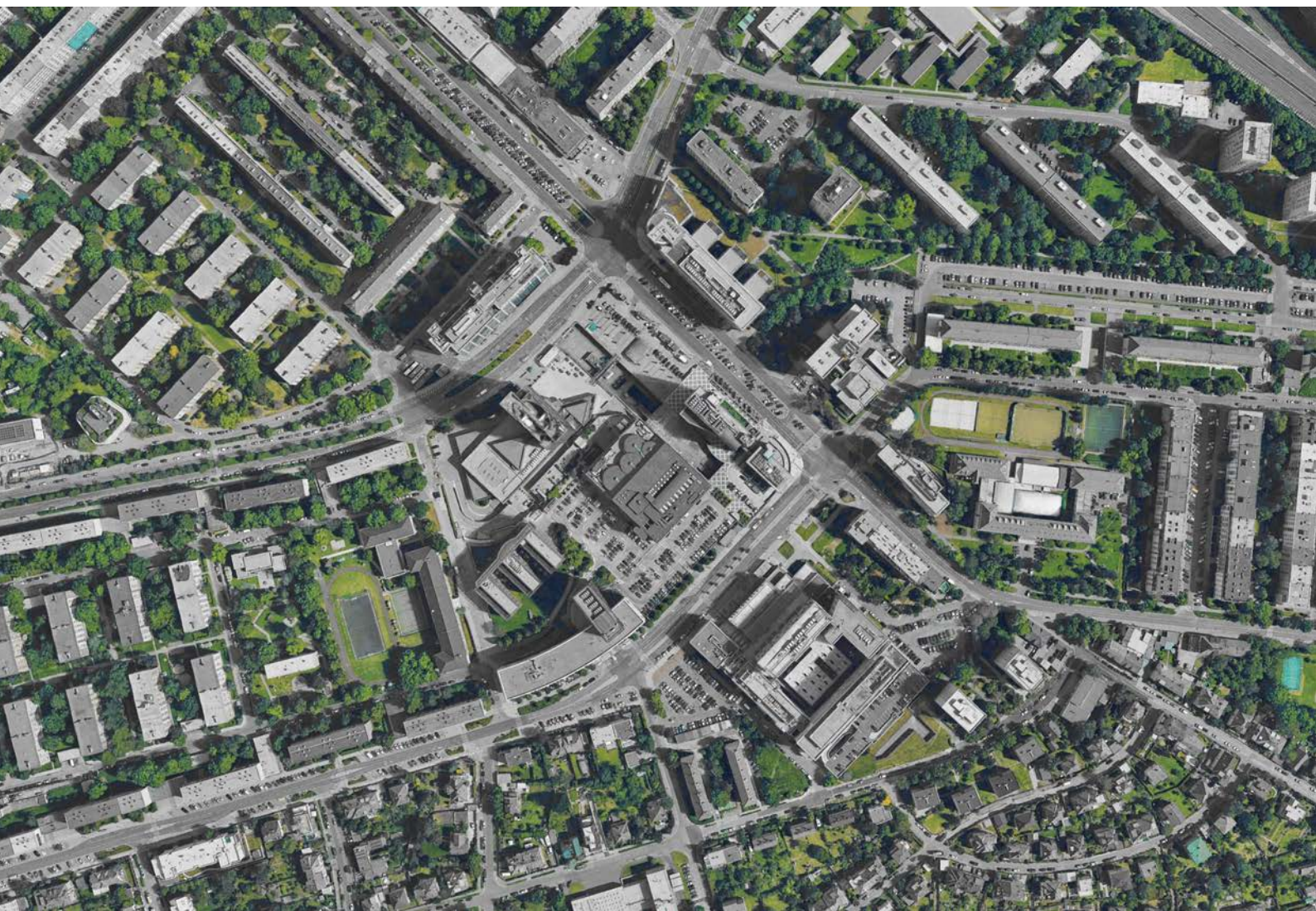
The first thing one may notice when arriving at Budějovické Náměstí is the lack of green space. The concept for this project and revitalisation of the block is an Urban Permaculture Garden.

The definition of Permaculture is an approach to land management and settlement design that adopts arrangements observed in flourishing natural ecosystems. It includes a set of design principles derived using whole-systems thinking.

This project aims to deliver a variety of these design principle elements which include a permaculture food forest, rainwater harvesting by means of raingardens, a vertical garden structure for local food production, and a place for the education of these systems.

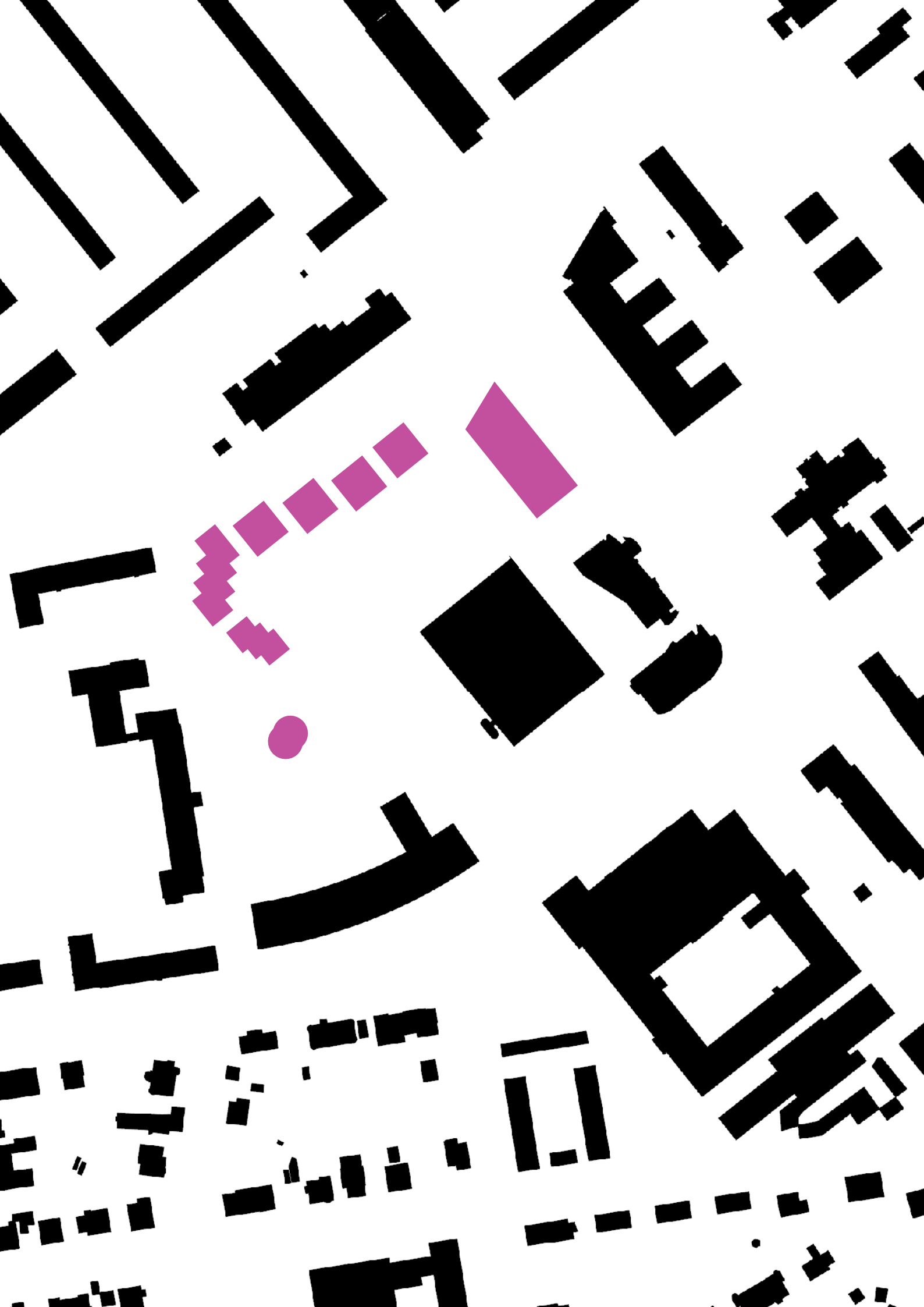
In symbiosis with the imposed permaculture program, the site will also offer residential space, commercial and retail space, a place for farmers markets and an outdoor gastro hub.

Included will be the restoration of the DBK structure to its near original condition, including parts of its landscaping elements.



Schwarzplan 1:2000

As is evident by the schwarzplan created by the built up area of the concept, more ground area has been cleared for circulation of pedestrians, social interaction and permaculture elements.



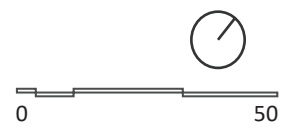
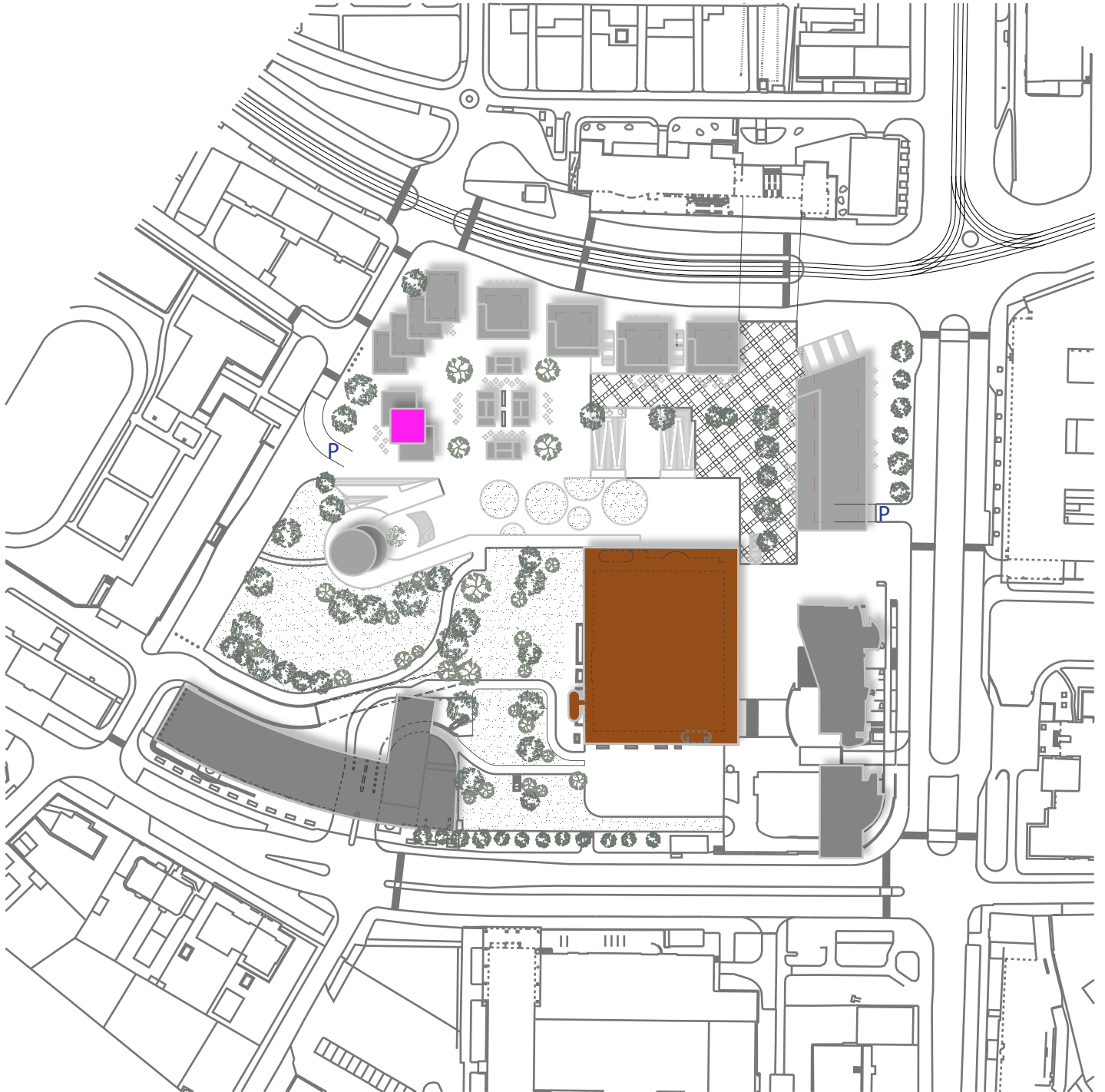
Site Plan 1:2000

The new structures have been arranged according to the perimeter of the block and the addition of a new visual axis that runs from the north corner to the south corner.

Additional underground parking structures are created, the DBK parking surface has been reduced to increase traffic into its underground structure allowing space for more green space for pedestrian circulation.

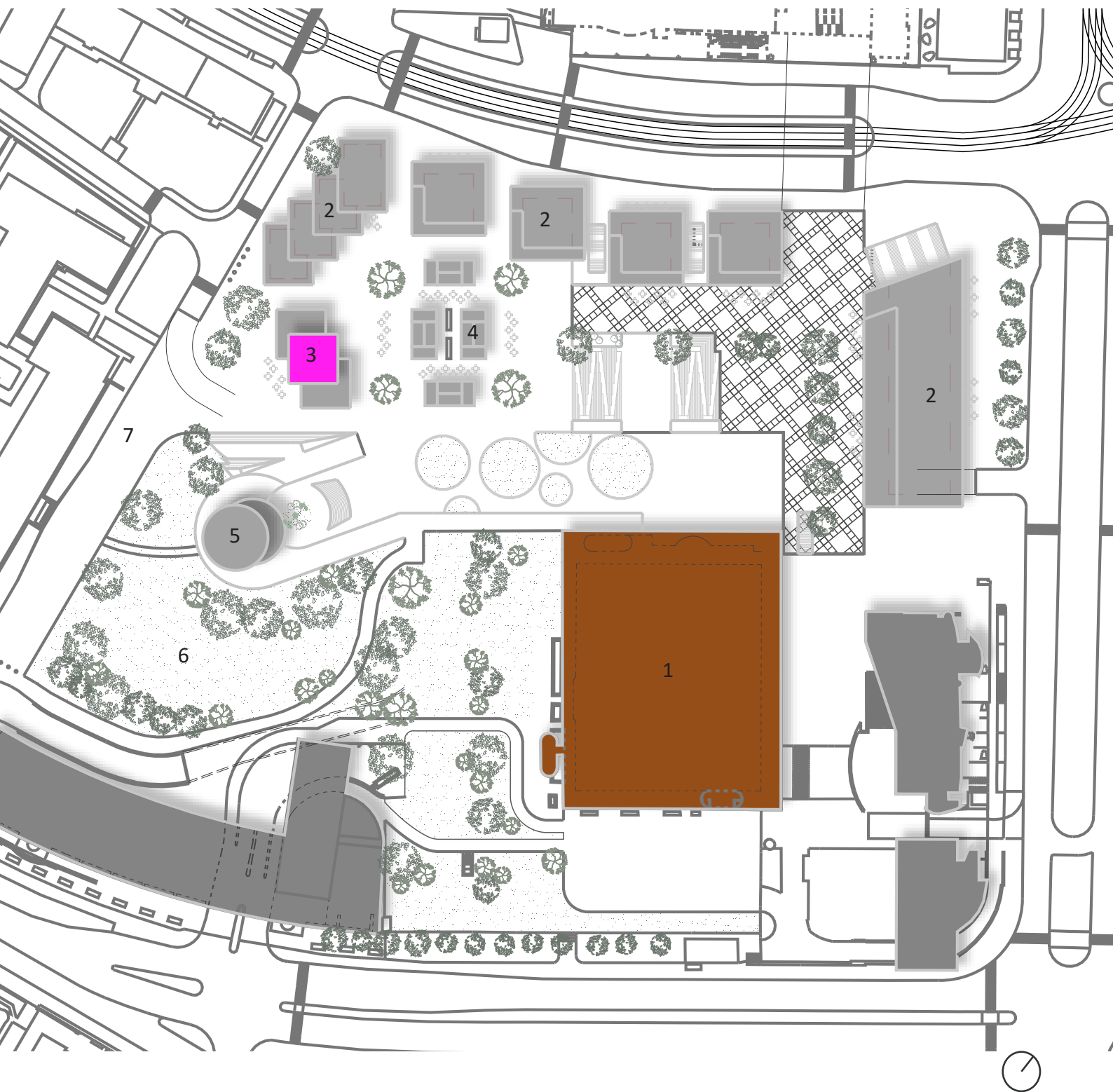
The permeability of the site is drastically increased with the uniform leveling of most of the surface and spacing between structures.

Green space can now allot for approximately fifty percent of surface area, including the addition of green roofs.



Main Program

1. DBK restoration
2. Mixed use structures - residential/ commercial
3. Aquaponics vertical farm and market
4. Gastro hub
5. Study/ coworking cafe + permaculture education space
6. Permaculture garden/ food forest
7. Farmers market/ event space/ plaza



Site Section 1:750



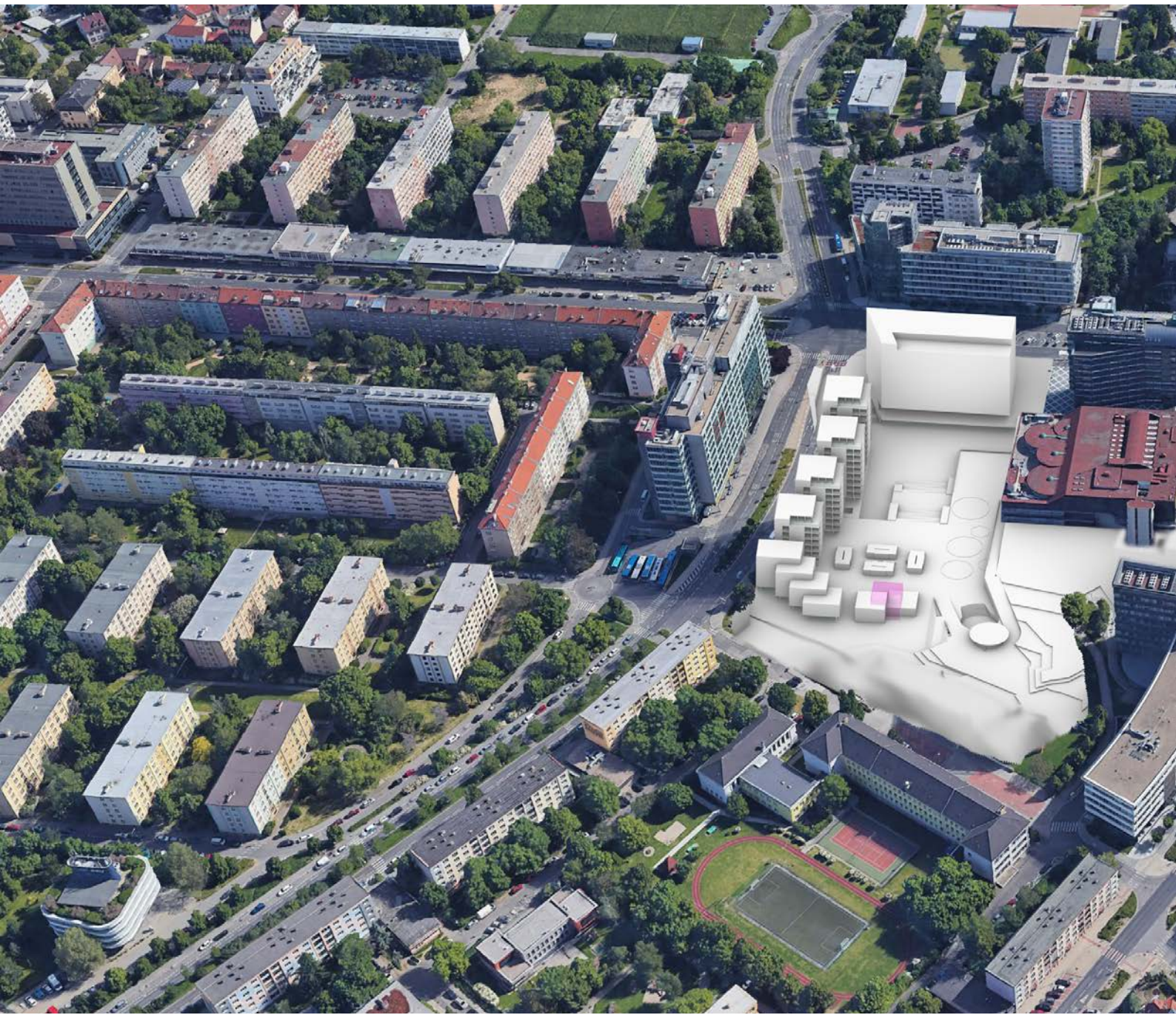


Site Section 1:750





Axonometric - SW





Visualisations



Permaculture Cafe from Aquaponics Terrace



Main Plaza

