



DESIGN STUDIO EFLER
DEPARTMENT OF
ARCHITECTURAL CONSERVATION
FA CTU IN PRAGUE

VALERIA MURILLO, COSTA RICA
LEISURE RURAL SQUARE
LOUKOV - REHABILITATION
WINTER SEMESTER 2022/23

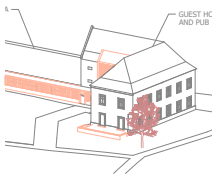


TABLE OF CONTENTS

LOCALIZATION



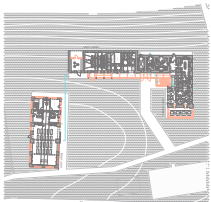
CONCEPT



HISTORY



FLOORPLANS



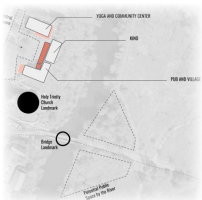
CURRENT STATE



FACADES AND SECTIONS



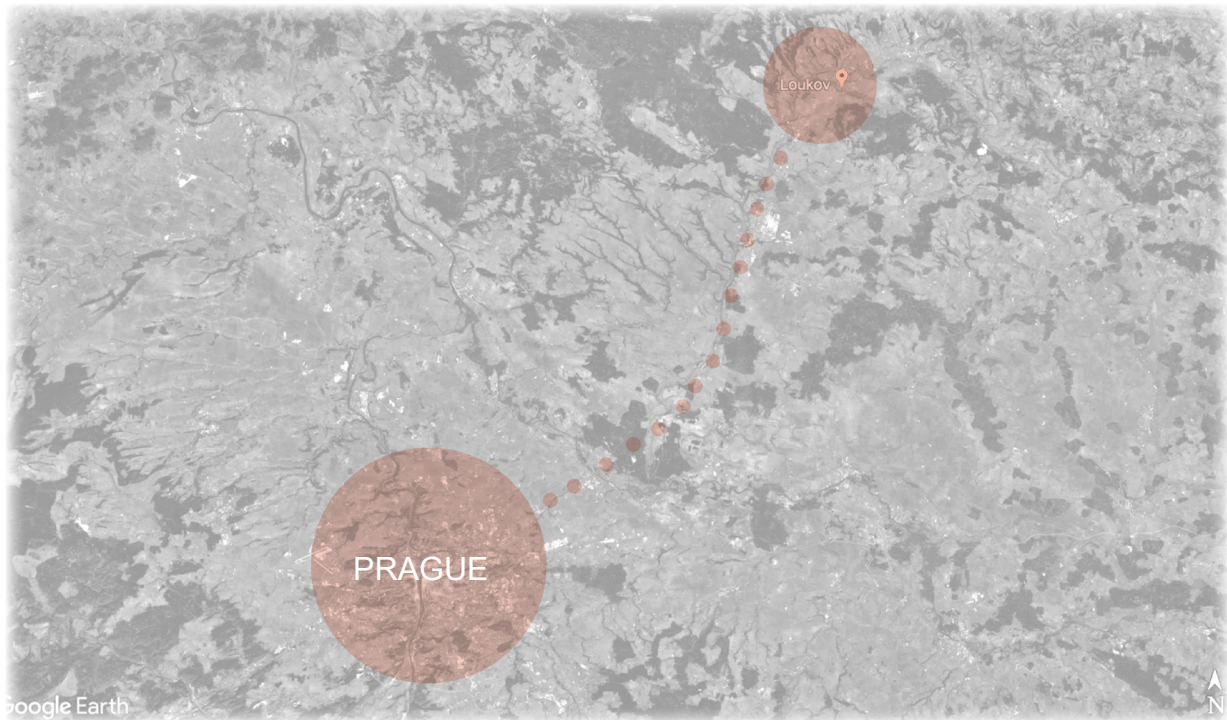
SITE MASTER PLAN



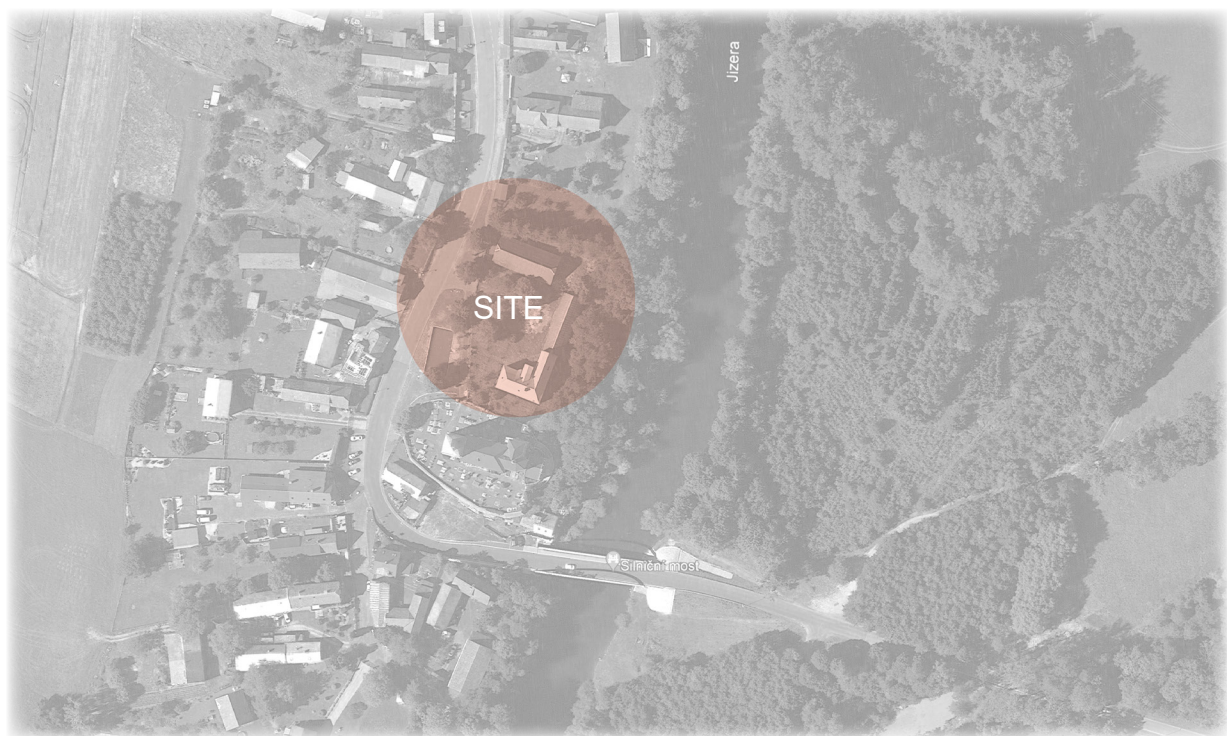
VISUALIZATIONS



LOCALIZATION



LOCALIZATION OF LOUKOV FROM PRAGUE



SITE OF INTERVENTION

HISTORY

The core of the village is an elongated village square lined with large, gable-fronted houses. In 1654, there were 20 recorded farmhouses. From that time, several valuable log houses with high attics topped with half-floors have been preserved.

Secondary development took place in the 18th and 19th centuries around radially arranged communications. This younger generation of log houses already has typical low attics. However, the multi-storey typology with galleries and chambers remains. Among the farmhouses, there are also typical single-storey log houses.

Valuable examples of newer stone construction in the village are also present. Farmhouses have classical arched gates, and pillar gates made of sandstone stucco.

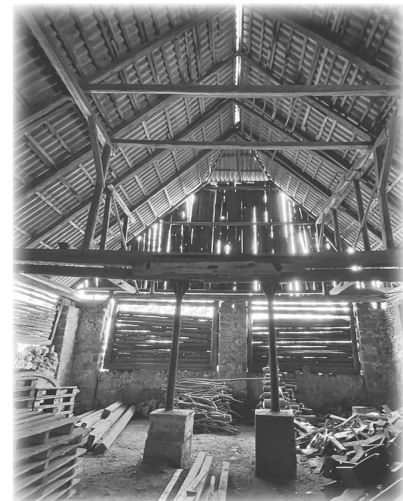
On a terrain elevation overlooking the bridge stands the village's focal point - the Church of the Holy Trinity. This late Renaissance structure, built between 1610 and 1612, stands on the site of an older medieval church. The current appearance of the church was created by gothic renovations in the 19th century. In 1824, a Romanesque tomb of the Rohan family was added to the presbytery.

Just north of the church is the rectory, which has an early Baroque or possibly late Renaissance core. The rectory underwent a classical renovation in 1819, and within its grounds, a pillar barn with timber infill has been preserved.

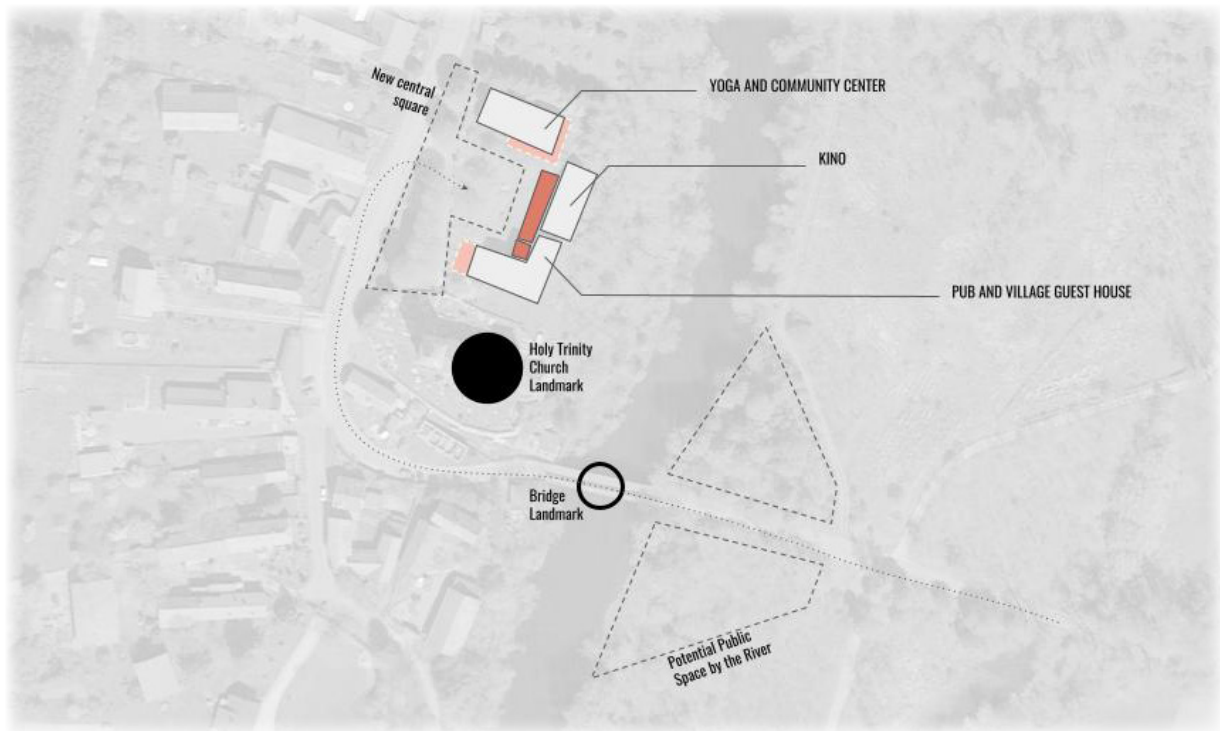
Mikuláš Molitor



CURRENT STATE



SITE MASTER PLAN

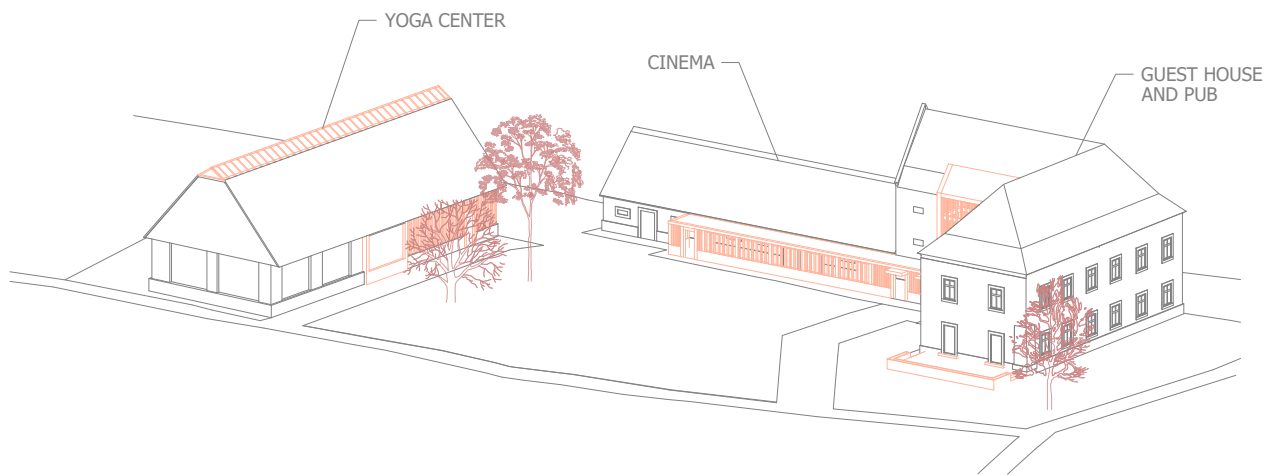


CONCEPT

This project intends to explore how to design a central square for a rural village, and adding leisure functions for the villagers. The proposal is focused on 3 main areas: social, physical and cultural activities. In this way, the old rectory and barn of Loukov are converted into a Pub and Guest House, a Yoga Center/ Comunal Center, and a Cinema.

In order to add this new functions into the square, it was necessary to add a corridor to connect the cinema with the Pub and Guest House, since they share the toilet area, the reception and therefore, the circulation. For this reason, the original staircase was rebuilt to make space for the new connection corridor.

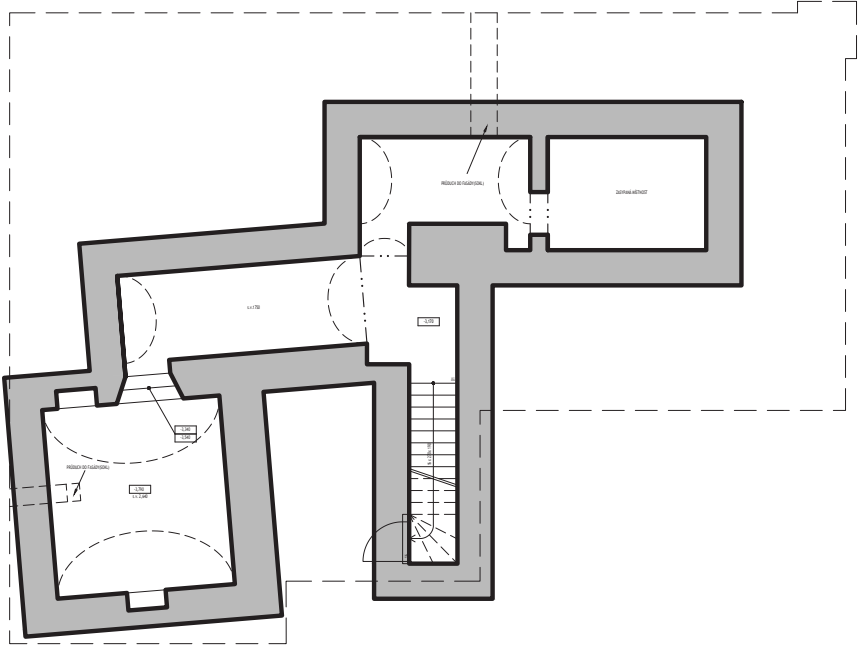
For all new interventions, the project uses an architectural language based on serial planes, wood and density. This light intervention allows to easily differentiate the old from the new, at the same time that it is visible the old design and structure through the new skin.



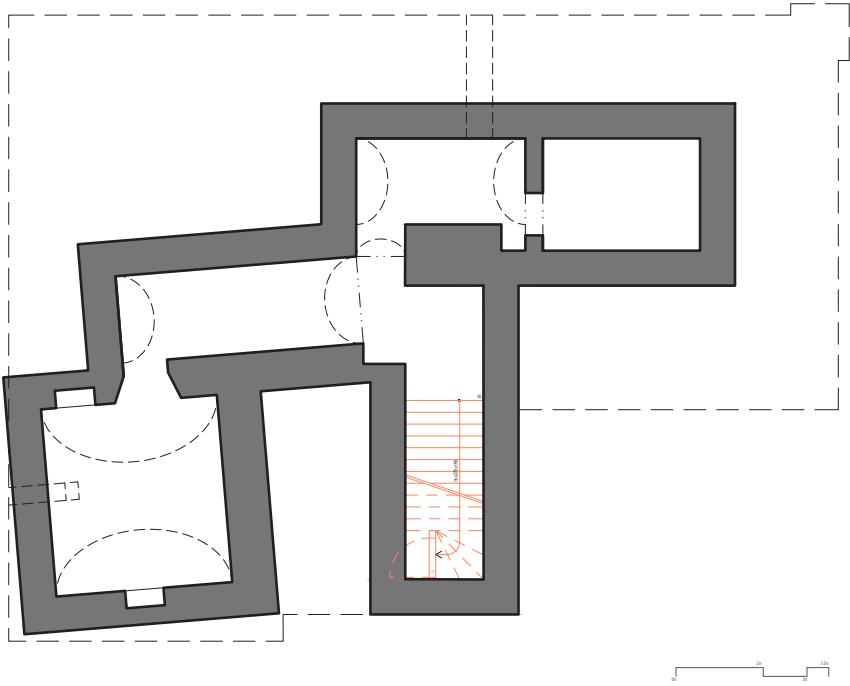
FUNCTION DIAGRAM



FLOORPLANS

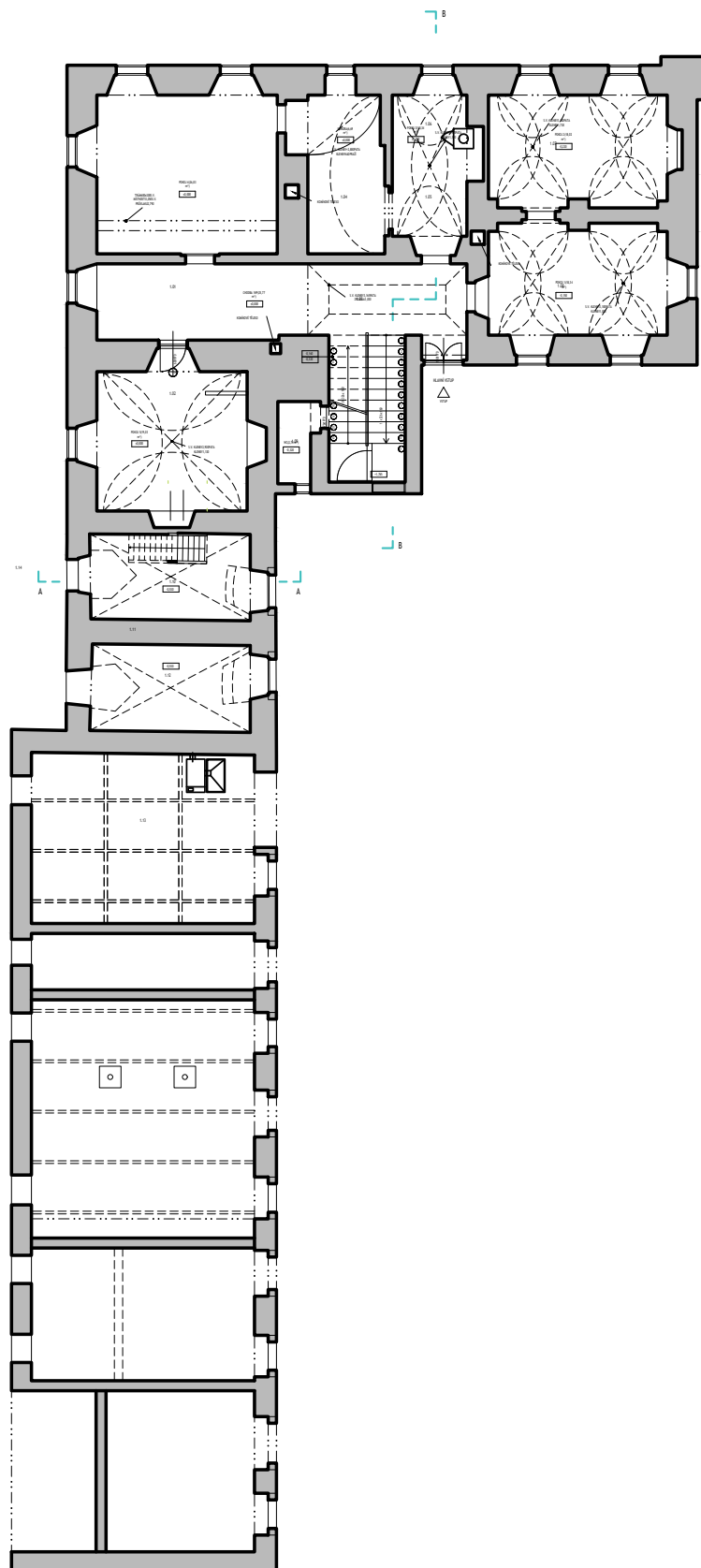


CURRENT CELLAR

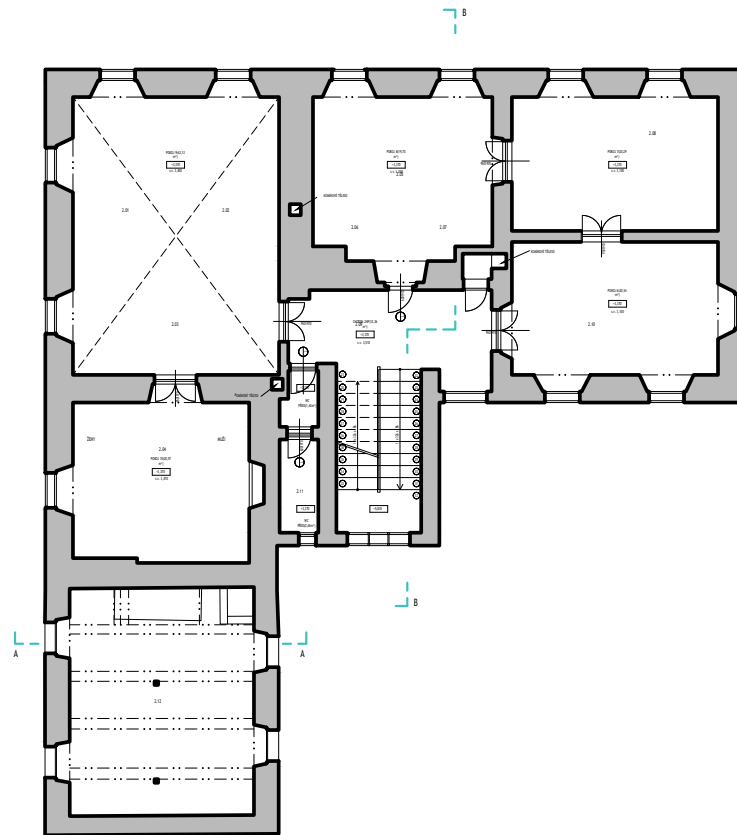


PROPOSAL CELLAR

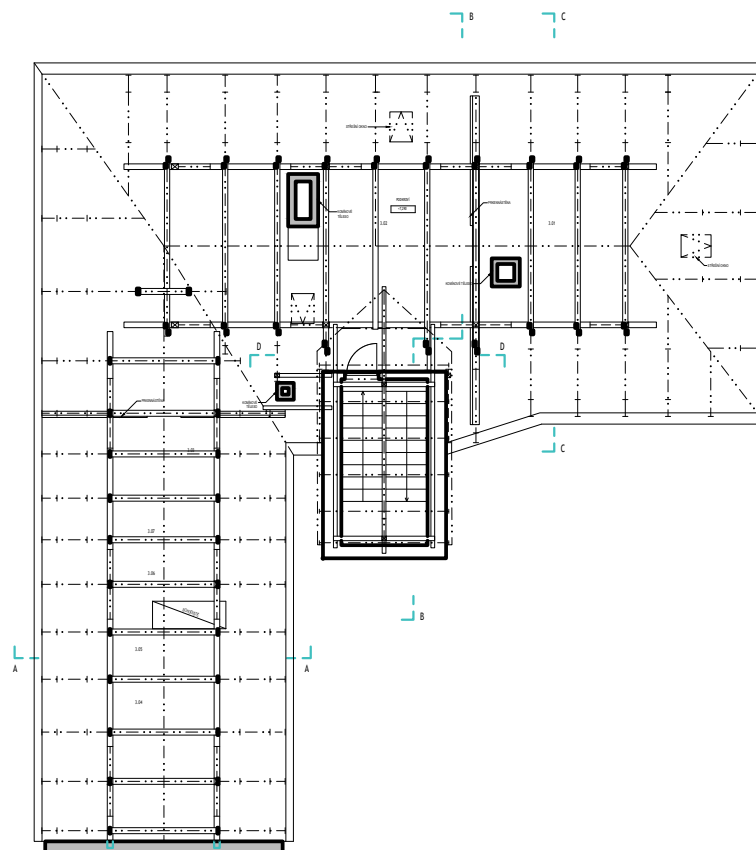




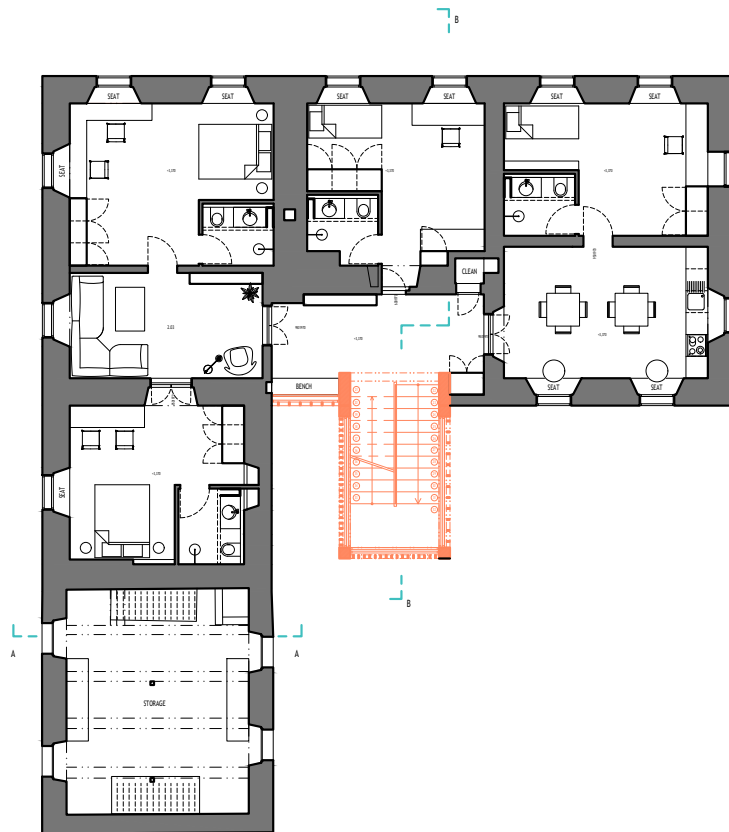
CURRENT 1ST FLOOR RECTORY



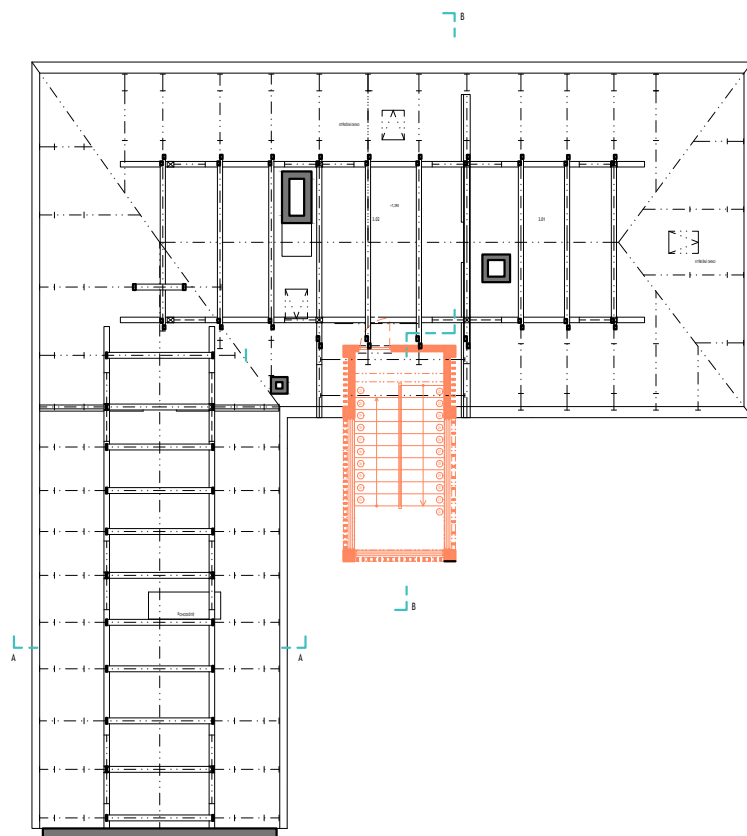
CURRENT 2ND FLOOR RECTORY



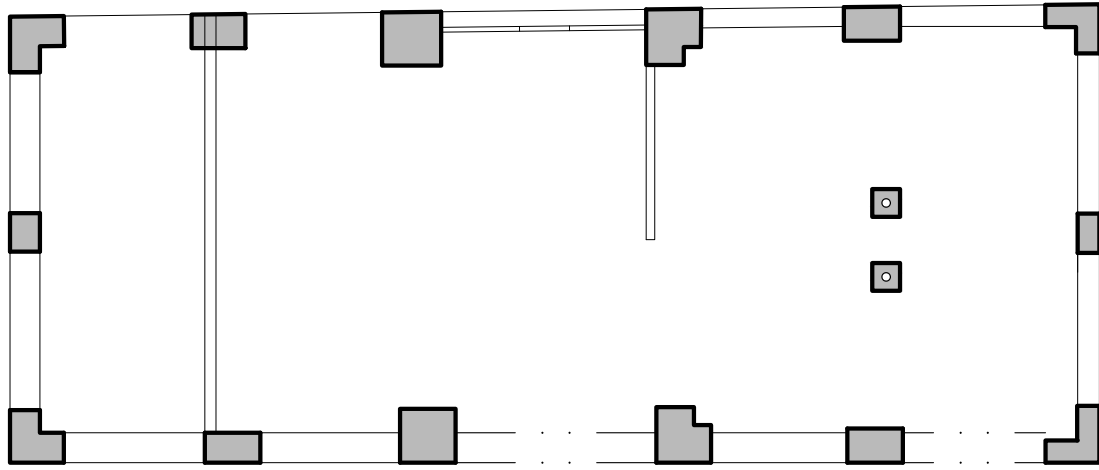
CURRENT ATTIC RECTORY



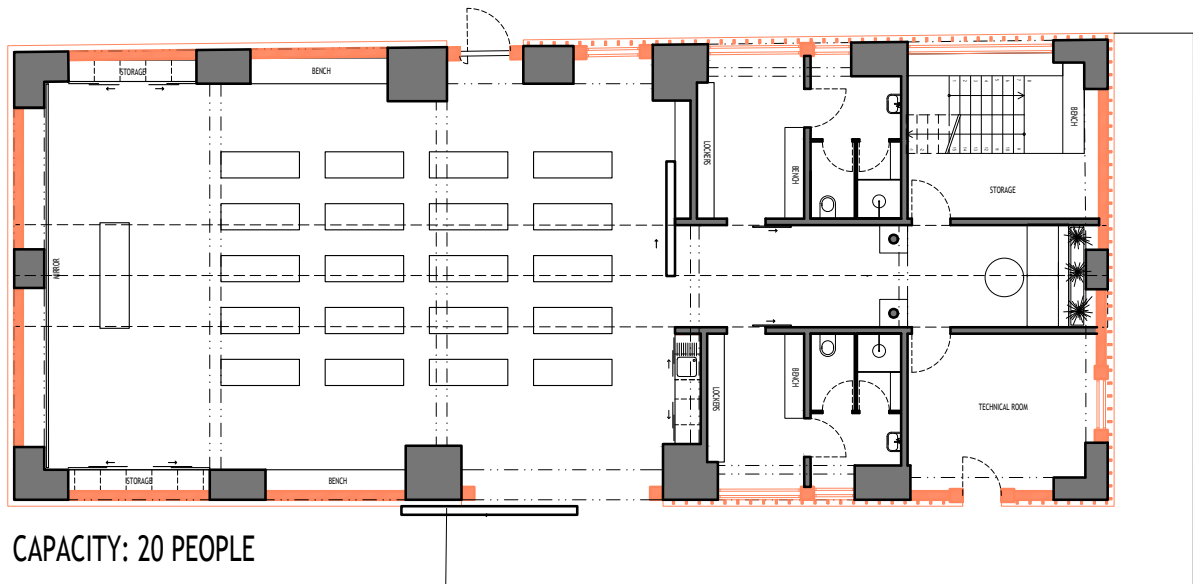
2ND FLOOR GUEST HOUSE



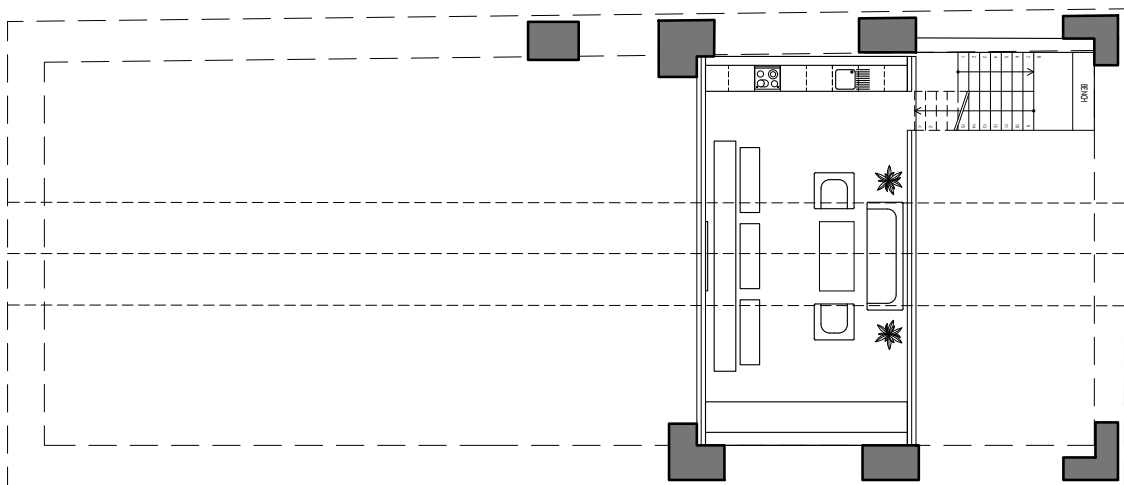
3RD FLOOR ATTIC



CURRENT FLOORPLAN BARN



1ST FLOOR YOGA CENTER



MEZZANINE YOGA CENTER

FACADES



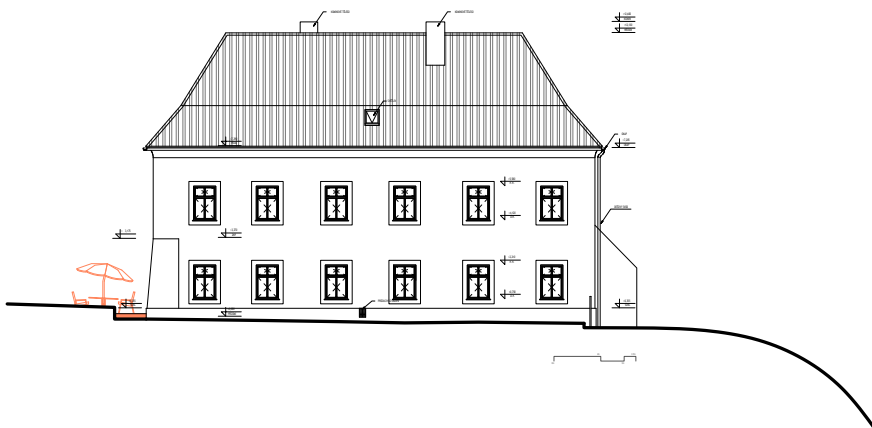
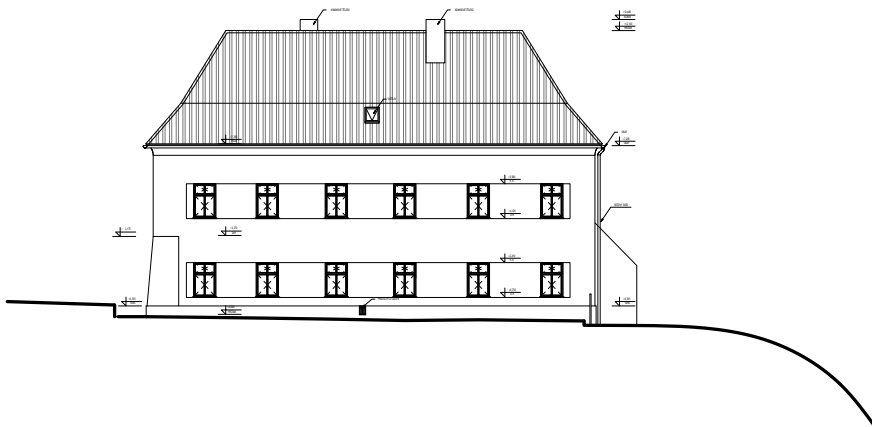
EAST ELEVATION CINEMA, PUB AND GUEST HOUSE



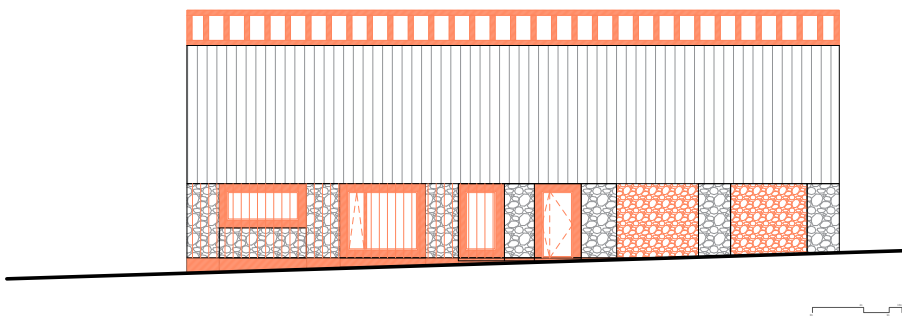
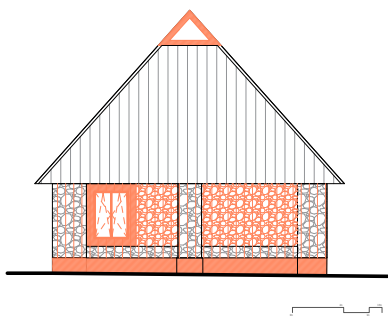
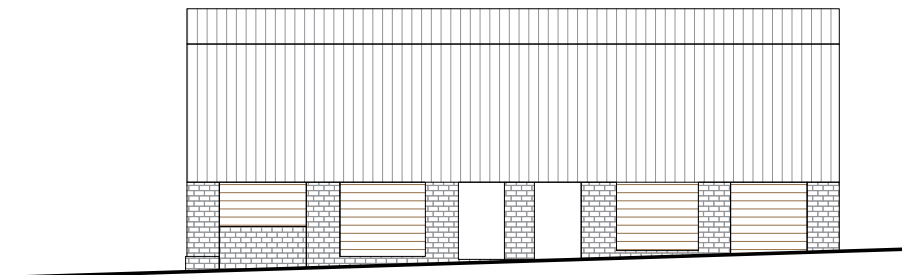
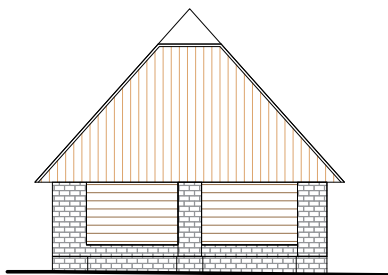
WEST ELEVATION CINEMA, PUB AND GUEST HOUSE



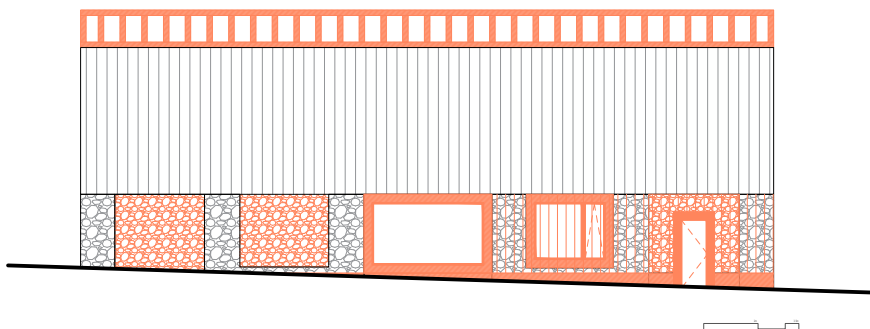
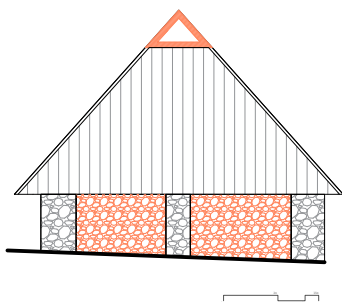
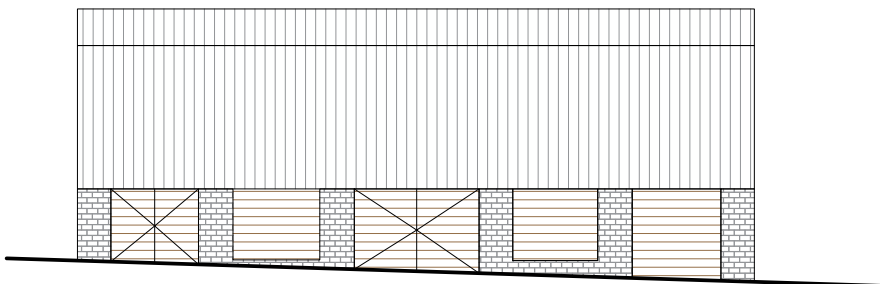
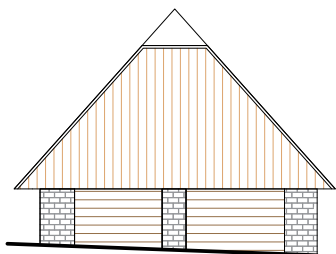
NORTH ELEVATION CINEMA, PUB AND GUEST HOUSE



SOUTH ELEVATION CINEMA, PUB AND GUEST HOUSE

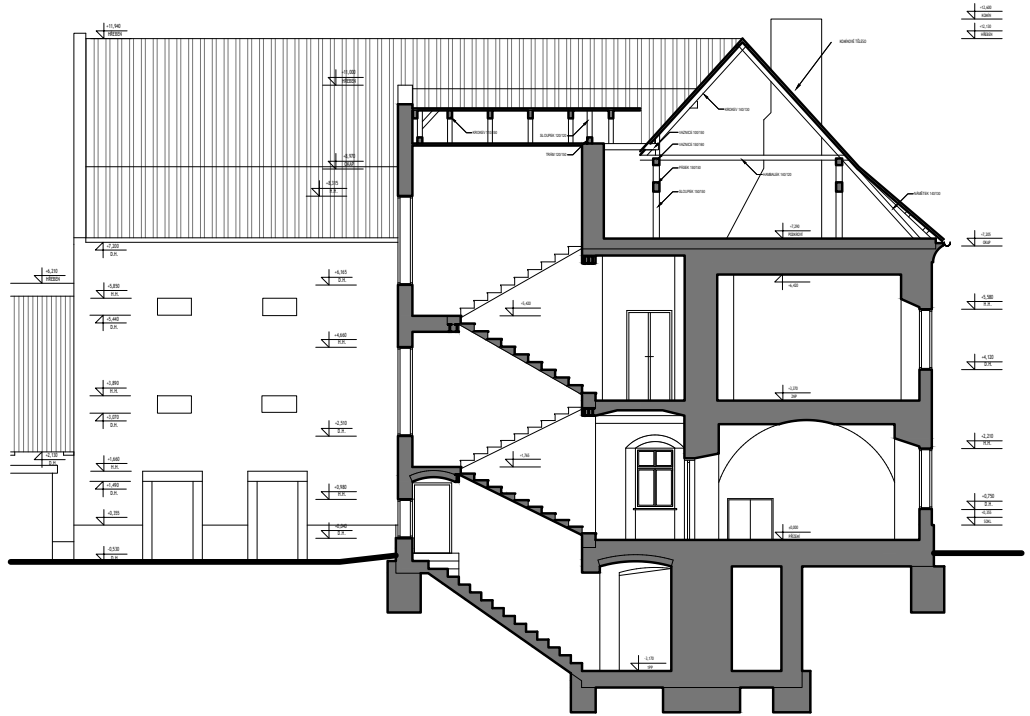


EAST AND NORTH ELEVATION YOGA CENTER

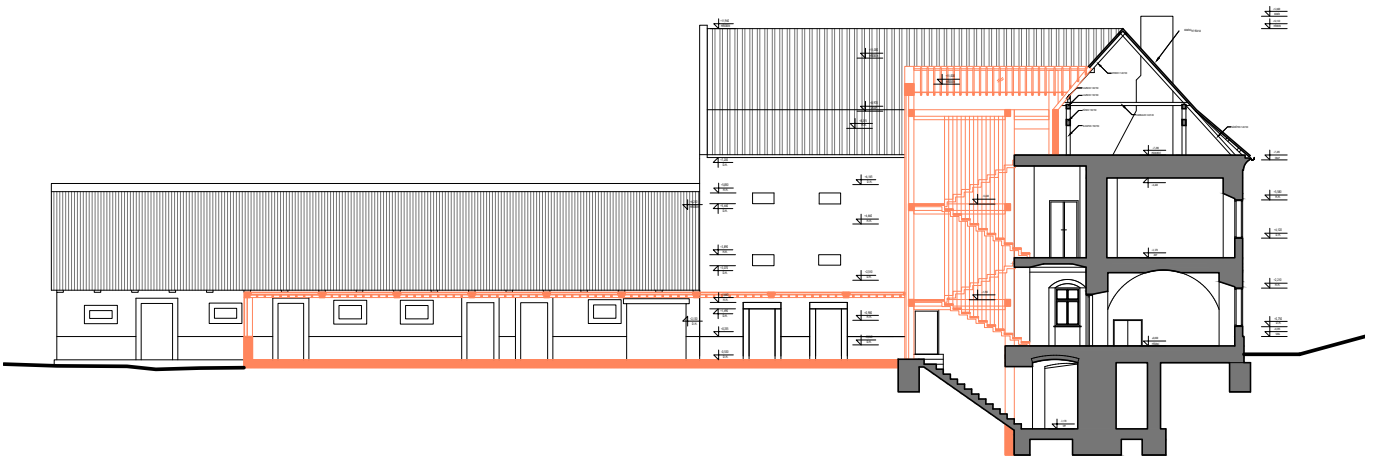


WEST AND SOUTH ELEVATION YOGA CENTER

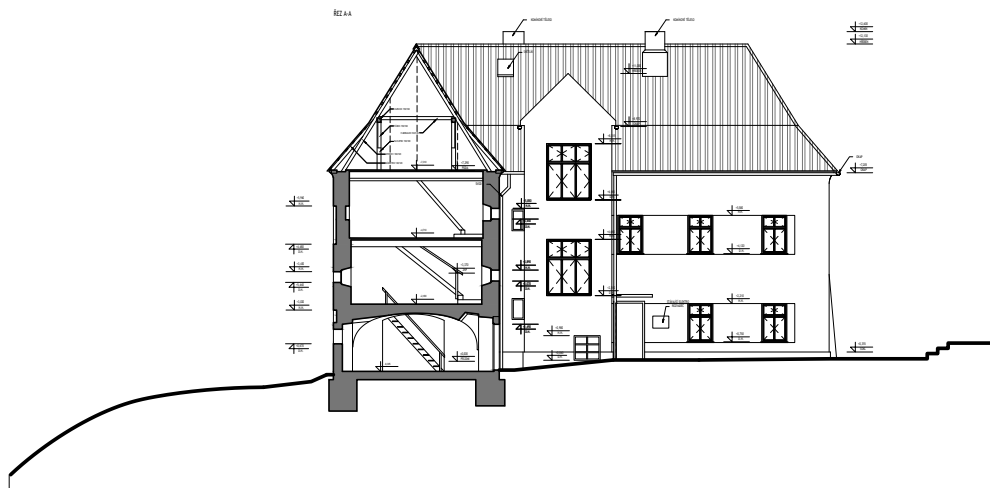
SECTIONS



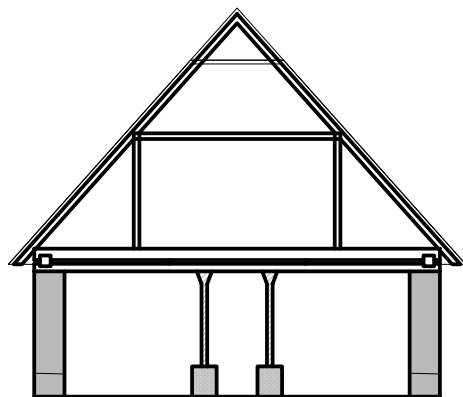
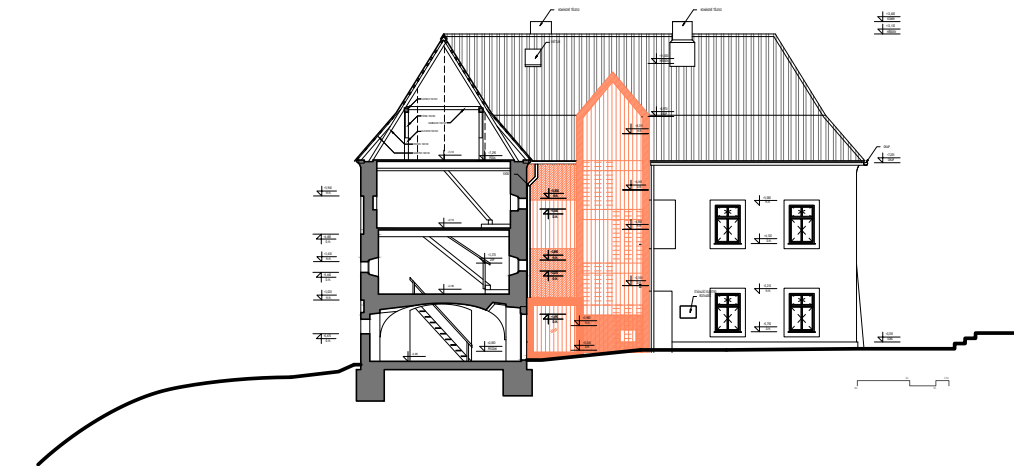
SECTION A-A RECTORY



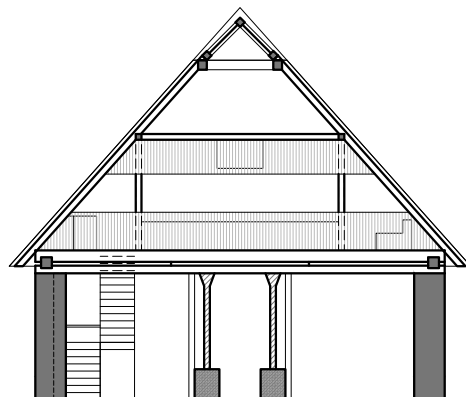
SECTION A-A NEW CORRIDOR AND STAIRCASE



SECTION B-B PUB AND GUEST HOUSE



SECTION OLD BARN



SECTION YOGA CENTER

VISUALIZATIONS

