

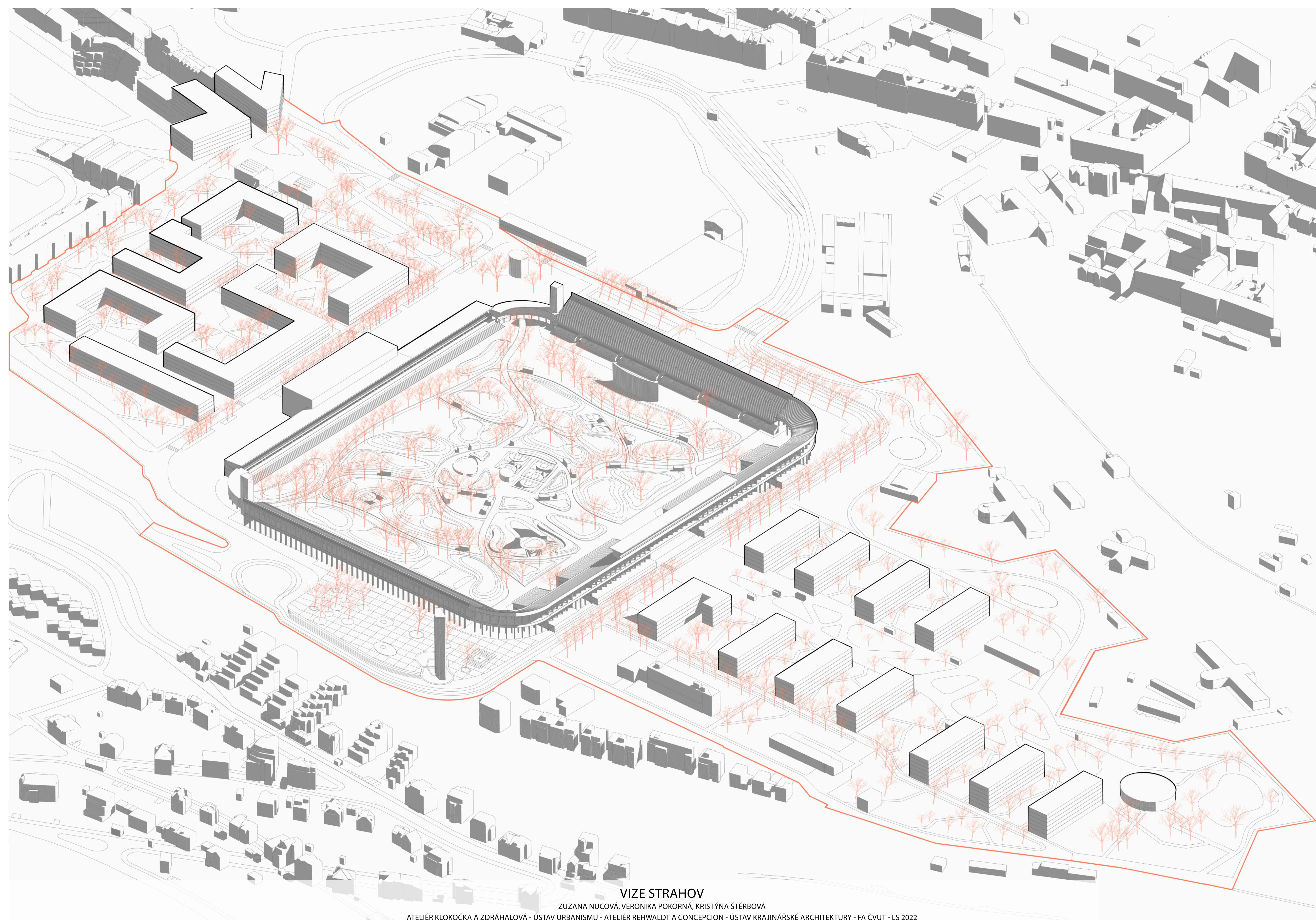


VIZE STRAHOV

ZUZANA NUCOVÁ, VERONIKA POKORNÁ, KRISTÝNA ŠTÉRBOVÁ

ATELIÉR KLOKOČKA A ZDRÁHALOVÁ - ÚSTAV URBANISMU - ATELIÉR REHWALDT A CONCEPCION - ÚSTAV KRAJINÁRSKE ARCHITEKTURY - FA ČVUT - LS 2022



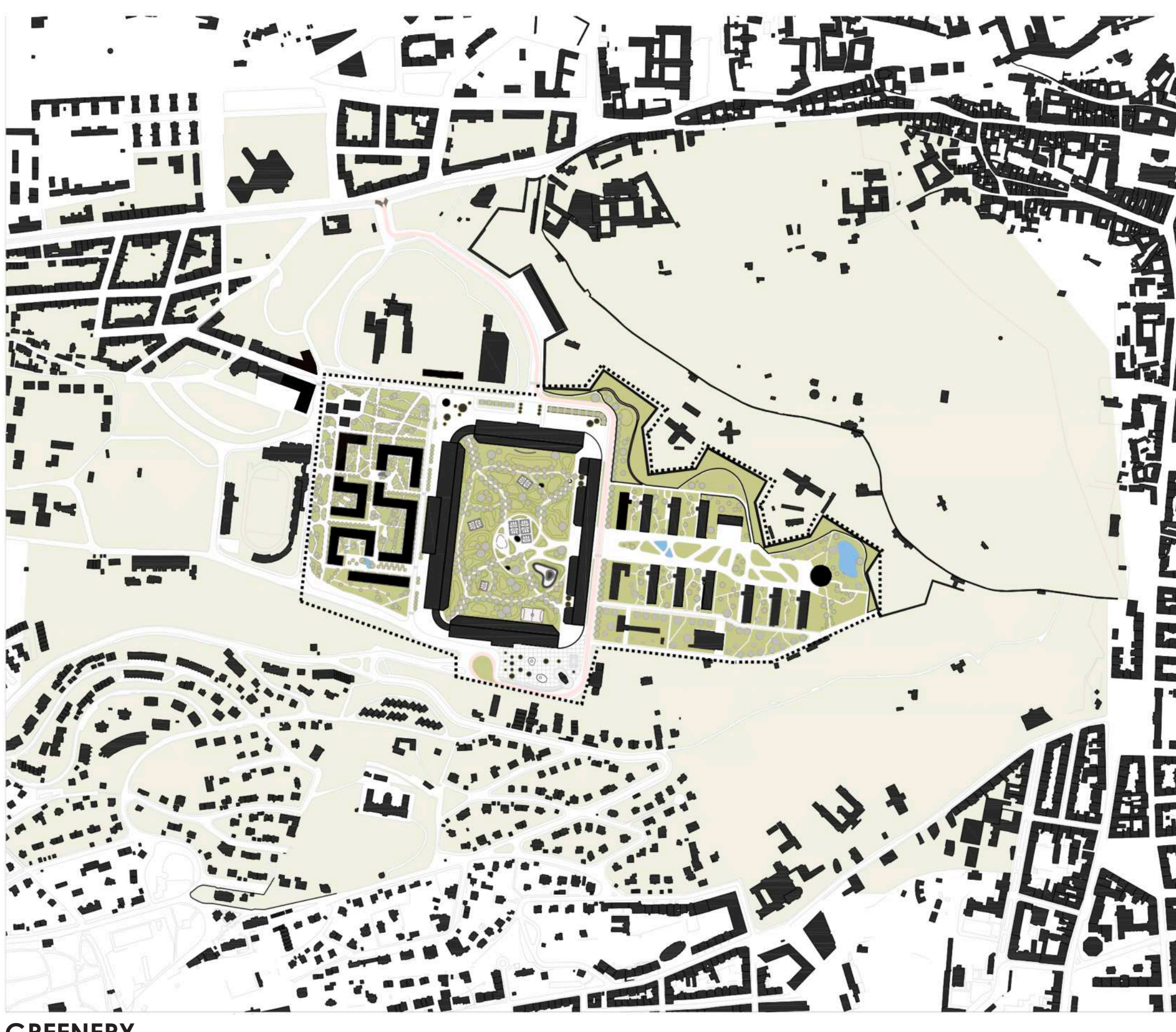
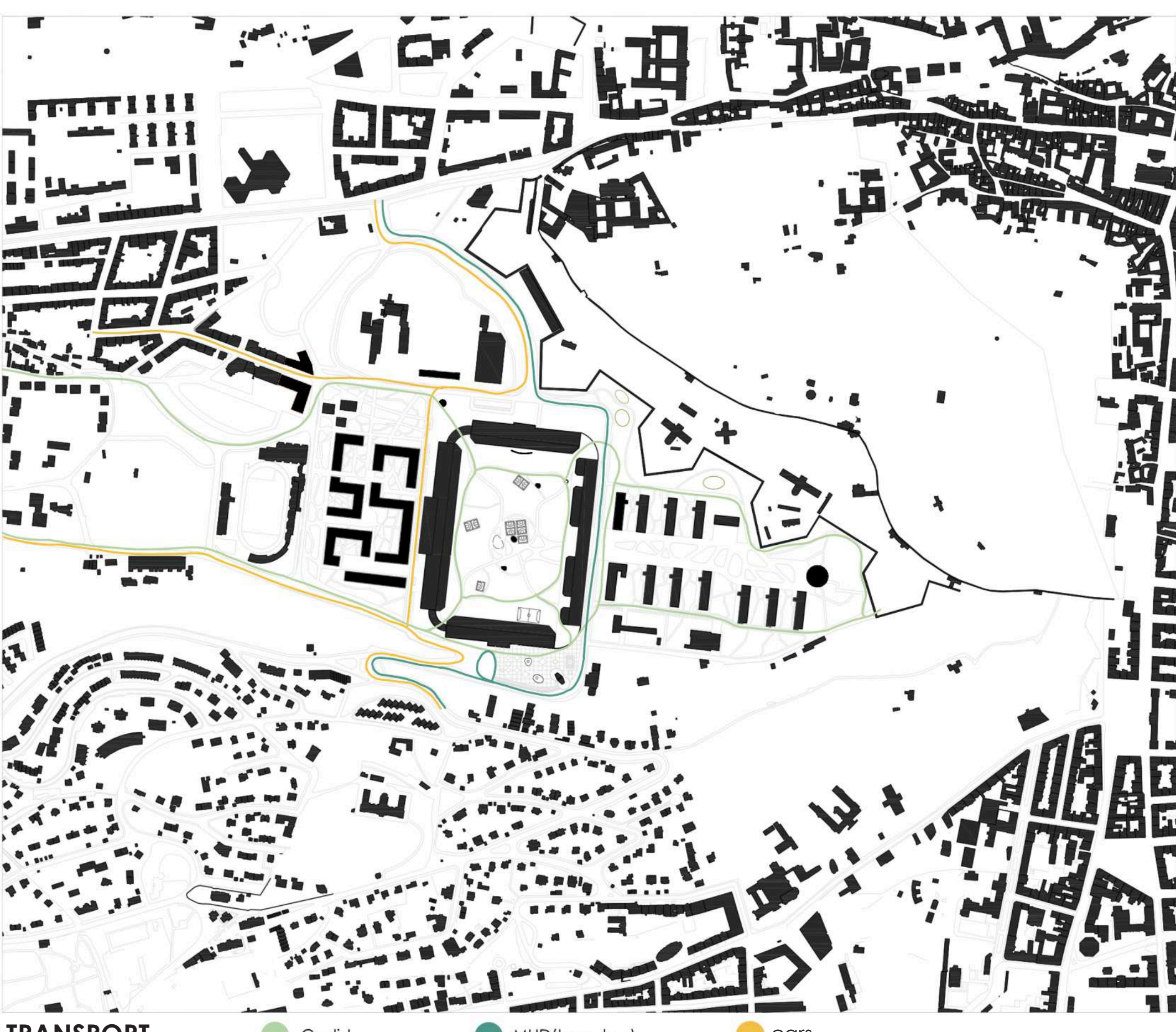
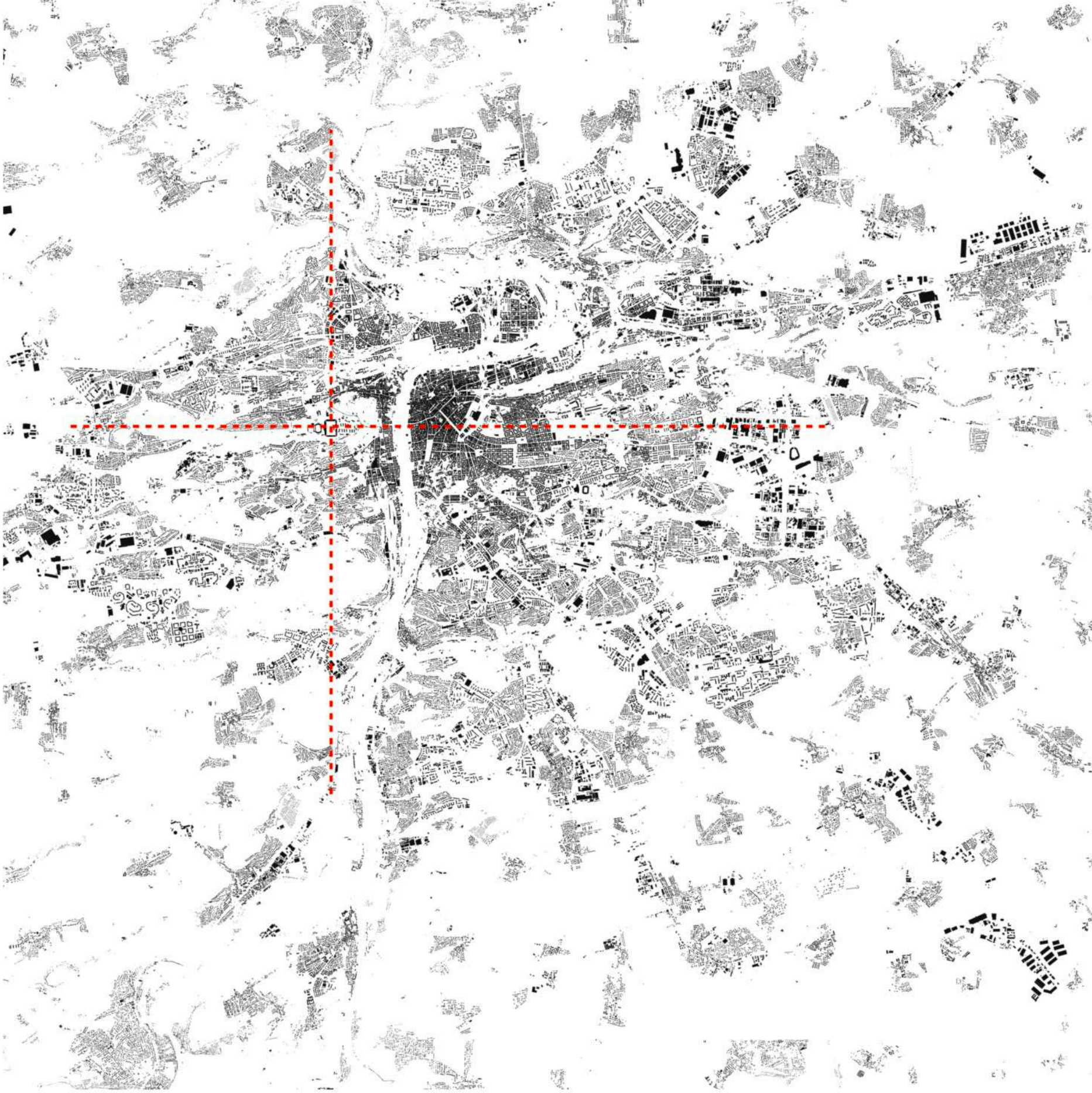


## VIZE STRAHOV

ZUZANA NUCOVÁ, VERONIKA POKORNÁ, KRISTÝNA ŠTÉRBOVÁ

ATELIÉR KLOKOČKA A ZDRÁHALOVÁ - ÚSTAV URBANISMU - ATELIÉR REHWALDT A CONCEPCION - ÚSTAV KRAJINÁŘSKÉ ARCHITEKTURY - FA ČVUT - LS 2022





## VIZE STRAHOV

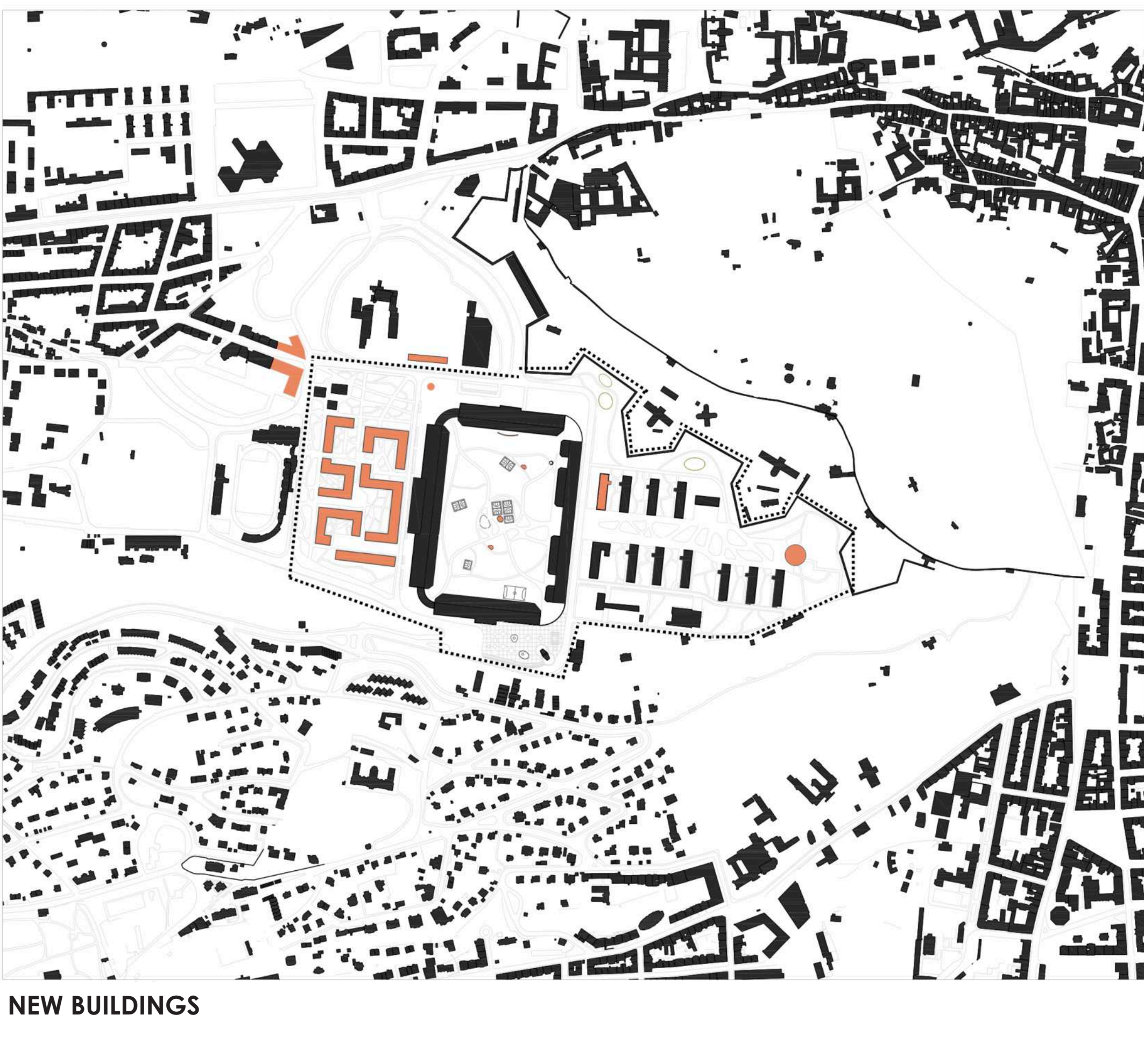
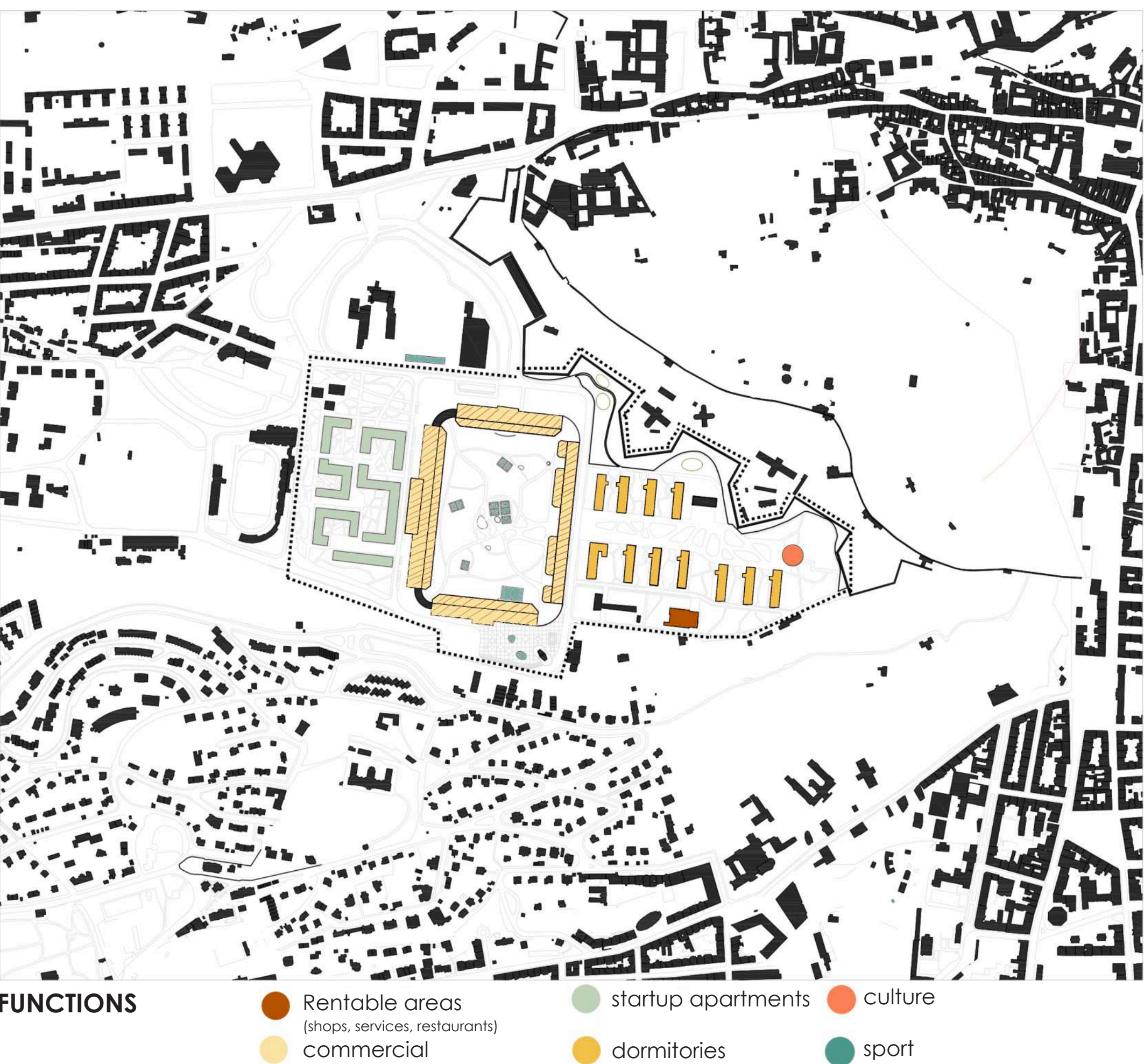
Strahov is the place where the great history of our nation took place. Today, it is an important place for many students who live there. We have decided to make Strahov a place that will be attractive to the residents of Strahov as well as to the residents of the whole of Prague, or even to visitors from all over the world. Our proposal is to create a place for all people who like the fresh air, nice views, for all gastrotourists or lovers of art and culture.

The main idea of our concept is to open the inner space of the stadium to the public and create an urban park in this area. The park is accessible from five access points, four are in the corners of the stadium and the fifth entrance is the Brána borců. The morphology of the stadium's inner space is completely changed, with a number of smaller hills forming paths that wander across the entire area. The central part of the park is designed as a place with a higher concentration of sports fields and mobile stands. There is also a skate rental and sports equipment shop. The paths inside the stadium are intended as paths for pedestrians, cyclists and skaters. Some of the tribunes of the stadium are used as seating for the summer cinema, others are left existing and are waiting for people to continue to use them themselves.

Student dormitories are proposed to the east of the stadium, and starter housing to the west. One new block is being added to the student halls of residence and the existing blocks will be reconstructed. The new starter housing and the halls of residence area are surrounded by public spaces with green space and plenty of meeting places. The park running between the halls of residence is equipped with mobile kiosks and cafes where students or new arrivals can purchase small refreshments. There is also proposed public space equipment such as chess, trampolines, ping pong tables, etc. The whole central park is completed by a newly designed gallery in the area in front of the bastion, which aims to attract people from Petřín Park to Strahov.

Along the bastions there is a newly built park, which forms a pleasant green belt with small water areas. This belt can be walked along the northern path to Ladronka.

The surroundings of the Strahov tunnel ventilation tower are designed as a square with trees, which is complemented by residential stairs with a view of Prague. Around the ventilation tower, a steel structure is designed to serve as a viewpoint. The square is further enriched with water features that will offer refreshment to all visitors on hot summer days. There are also specially modelled ramps for skateboarders and skaters. The mood of this place can be compared, for example, to Stalin on Letná.



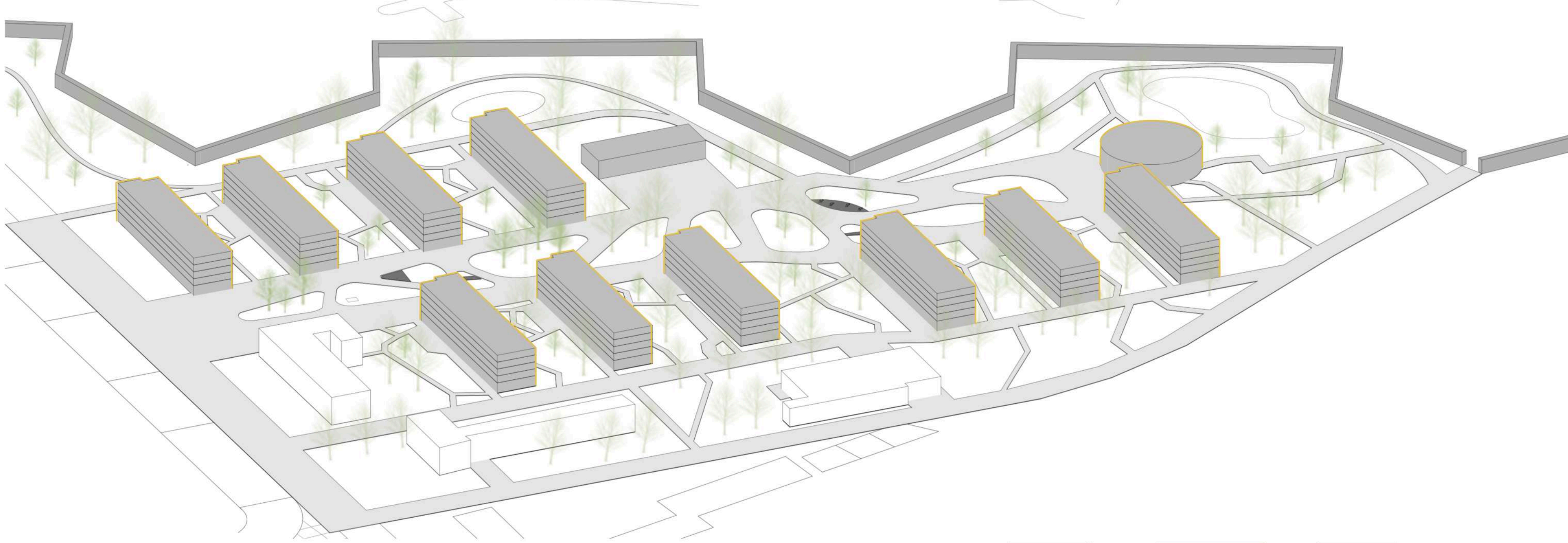
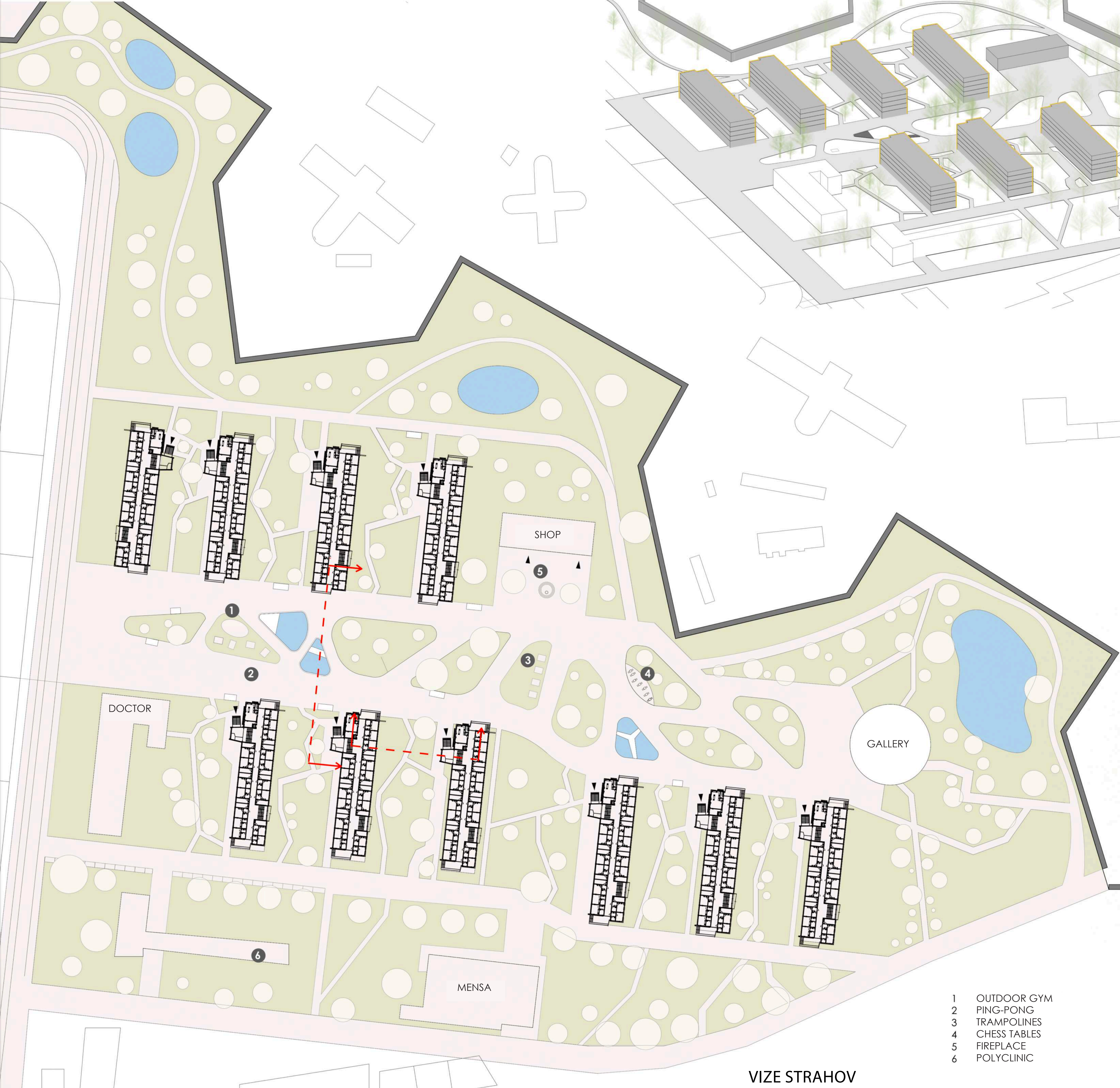
## VIZE STRAHOV

ZUZANA NUCOVÁ, VERONIKA POKORNÁ, KRISTÝNA ŠTÉRBOVÁ

ATELIÉR KLOKOČKA A ZDRÁHALOVÁ - ÚSTAV URBANISMU - ATELIÉR REHWALDT A CONCEPCION - ÚSTAV KRAJINÁŘSKÉ ARCHITEKTURY - FA ČVUT - LS 2022



STUDENT DORMITORIES



- 1 OUTDOOR GYM
- 2 PING-PONG
- 3 TRAMPOLINES
- 4 CHESS TABLES
- 5 FIREPLACE
- 6 POLYCLINIC

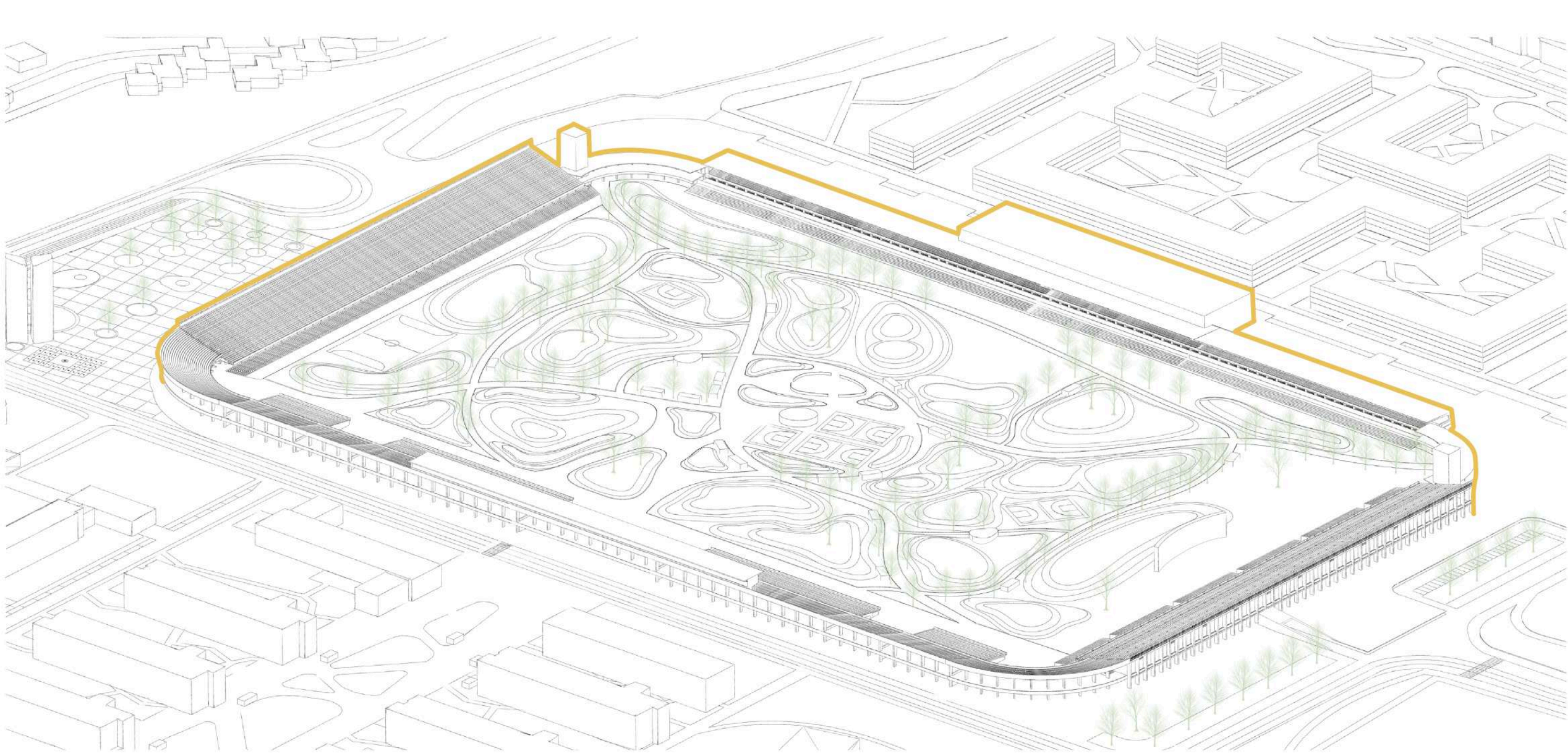
VIZE STRAHOV

ZUZANA NUCOVÁ, VERONIKA POKORNÁ, KRISTÝNA ŠTÉRBOVÁ

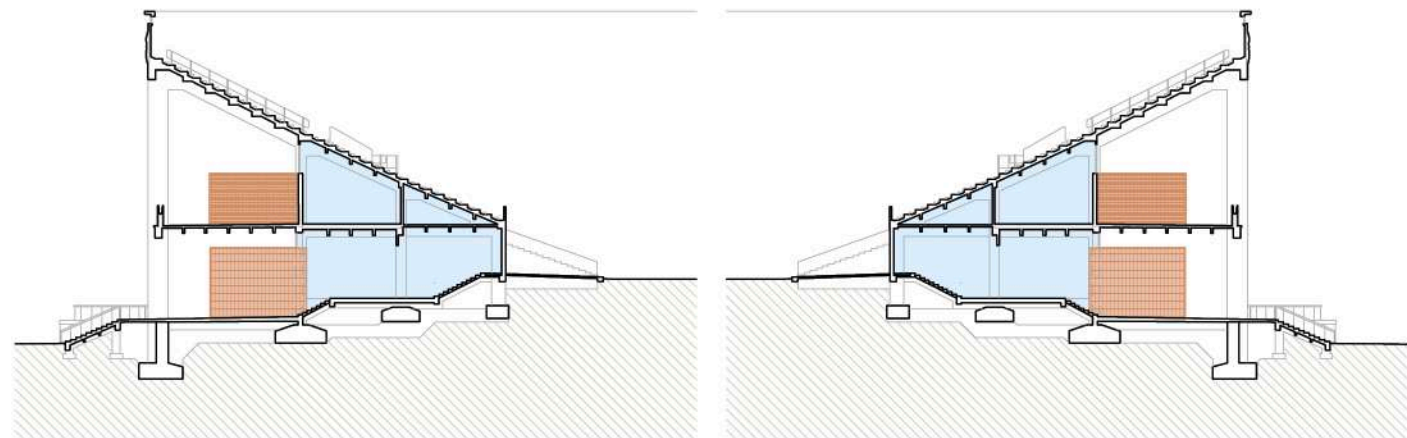
ATELIÉR KLOKOČKA A ZDRÁHALOVÁ - ÚSTAV URBANISMU - ATELIÉR REHWALDT A CONCEPCION - ÚSTAV KRAJINÁŘSKÉ ARCHITEKTURY - FA ČVUT - LS 2022



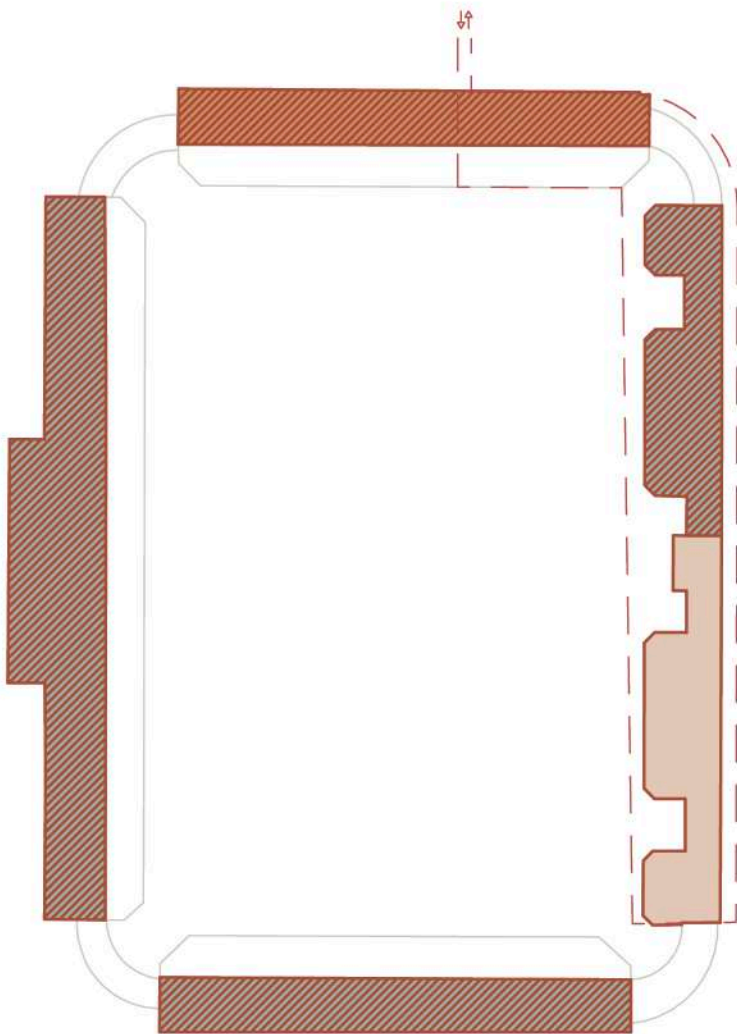
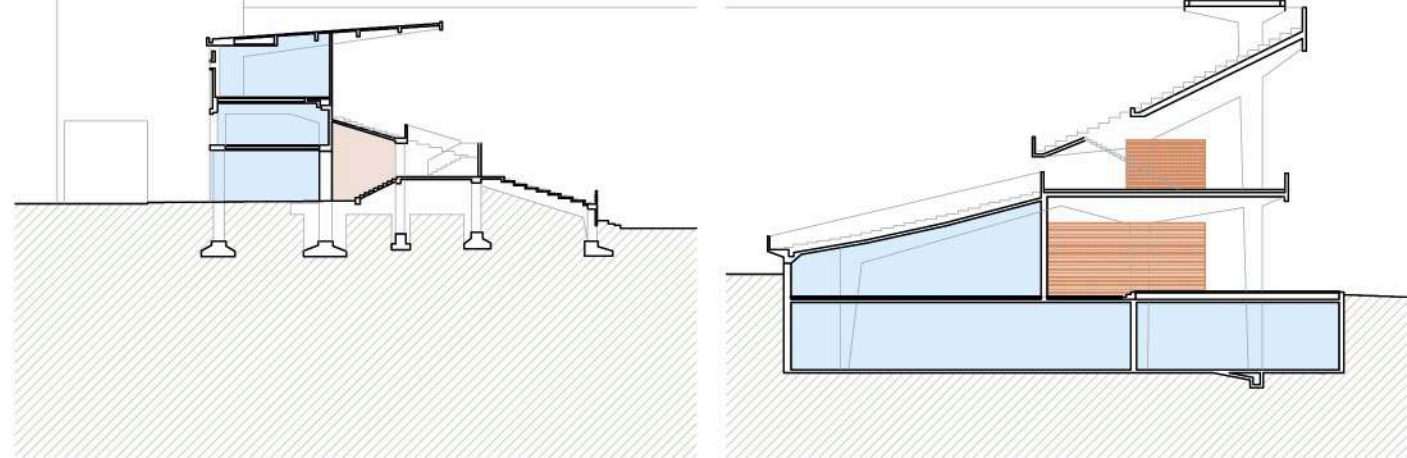
STADIUM 12



THE SOUTH AND NORTH TRIBUNE SECTION

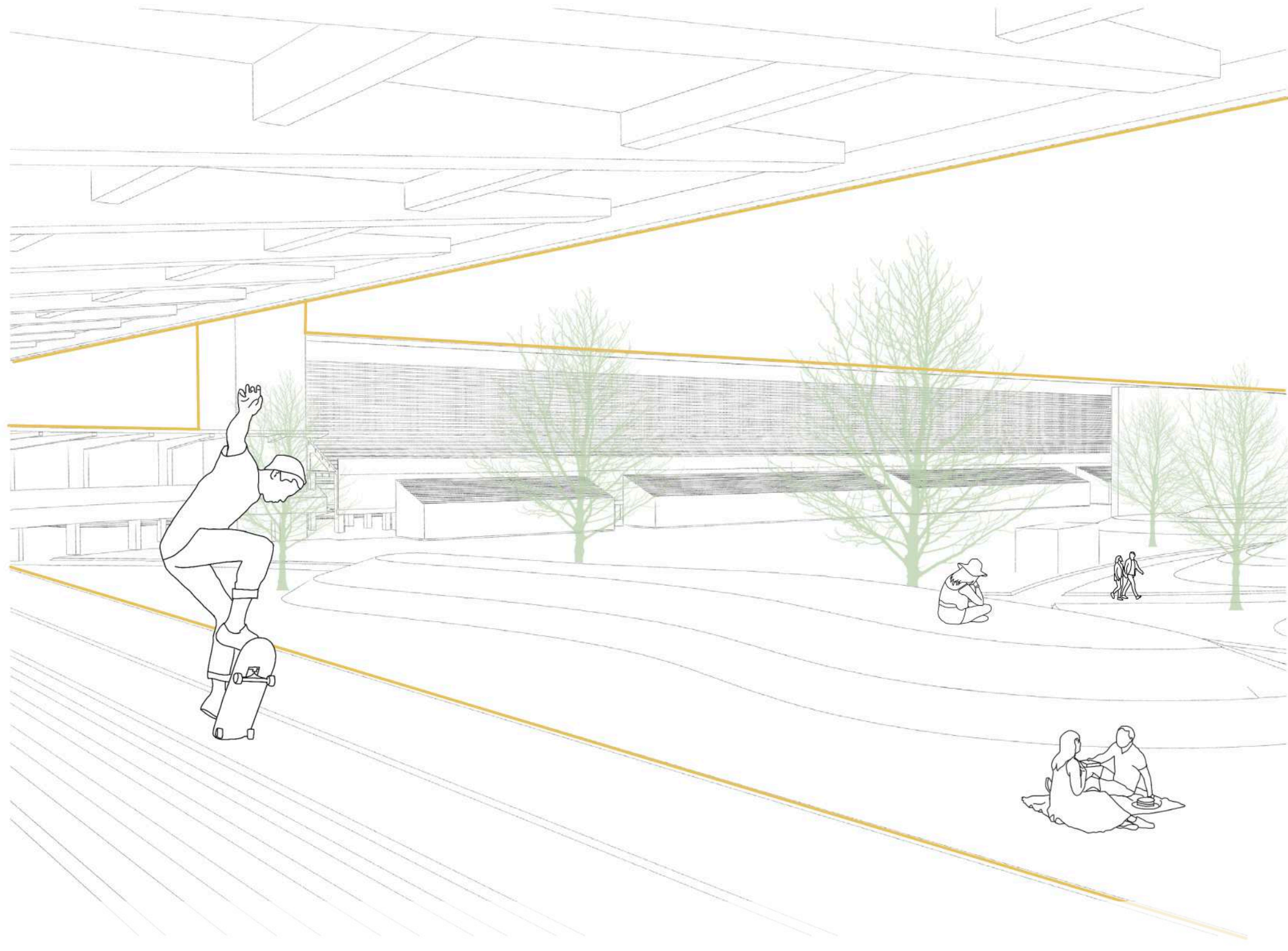


THE WEST AND EAST TRIBUNE SECTION



- MANAGEMENT
- CTU
  - SPORTS ASSOCIATION
  - PRAGUE 6
- RENT
- COMMERCIAL
- UNDERGROUND PARKING

- 1 SKATE RENTAL
- 2 SPORTS EQUIPMENT SHOP
- 3 STREETBALL FIELD
- 4 MULTIFUNCTIONAL PLAYGROUND
- 5 CHILDREN'S PLAYGROUND
- 6 SKATE PARK
- 7 WC
- 8 MOBILE KIOSKS
- 9 PREFABRICATED VARIABLE BOXES
- 10 VIEWPOINT
- 11 WATERFRONT
- 12 SKATE RAMP
- 13 SKULPTURE
- 13 ENTRANCE TO THE UNDERGROUND GARAGE



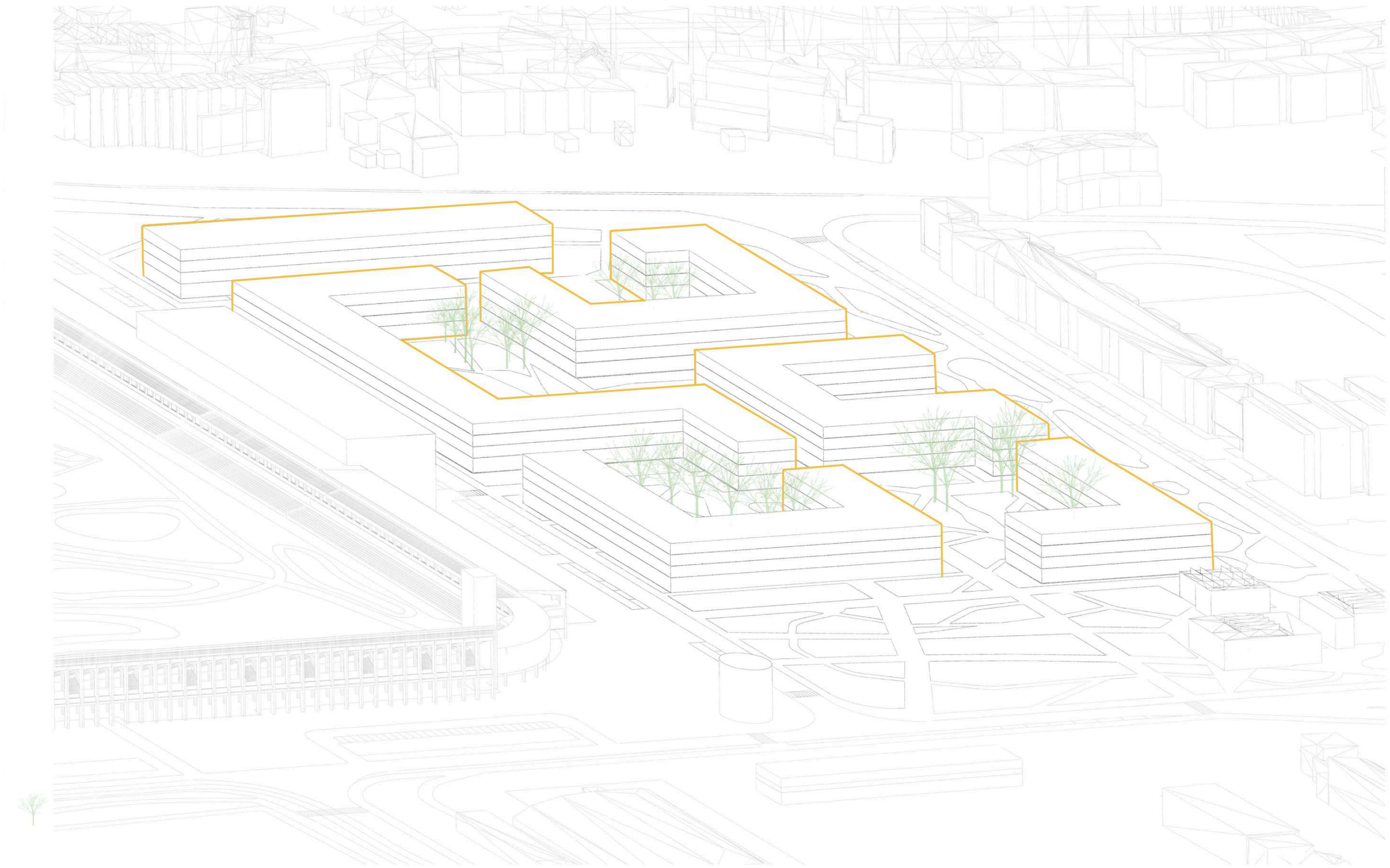
VIZE STRAHOV

ZUZANA NUCOVÁ, VERONIKA POKORNÁ, KRISTÝNA ŠTÉRBOVÁ

ATELIÉR KLOKOČKA A ZDRÁHALOVÁ - ÚSTAV URBANISMU - ATELIÉR REHWALDT A CONCEPCION - ÚSTAV KRAJINÁŘSKÉ ARCHITEKTURY - FA ČVUT - LS 2022

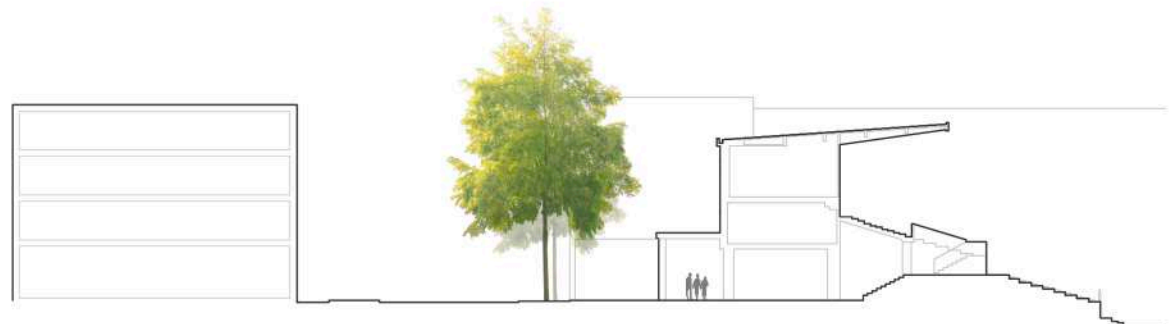


STARTUP HOUSING

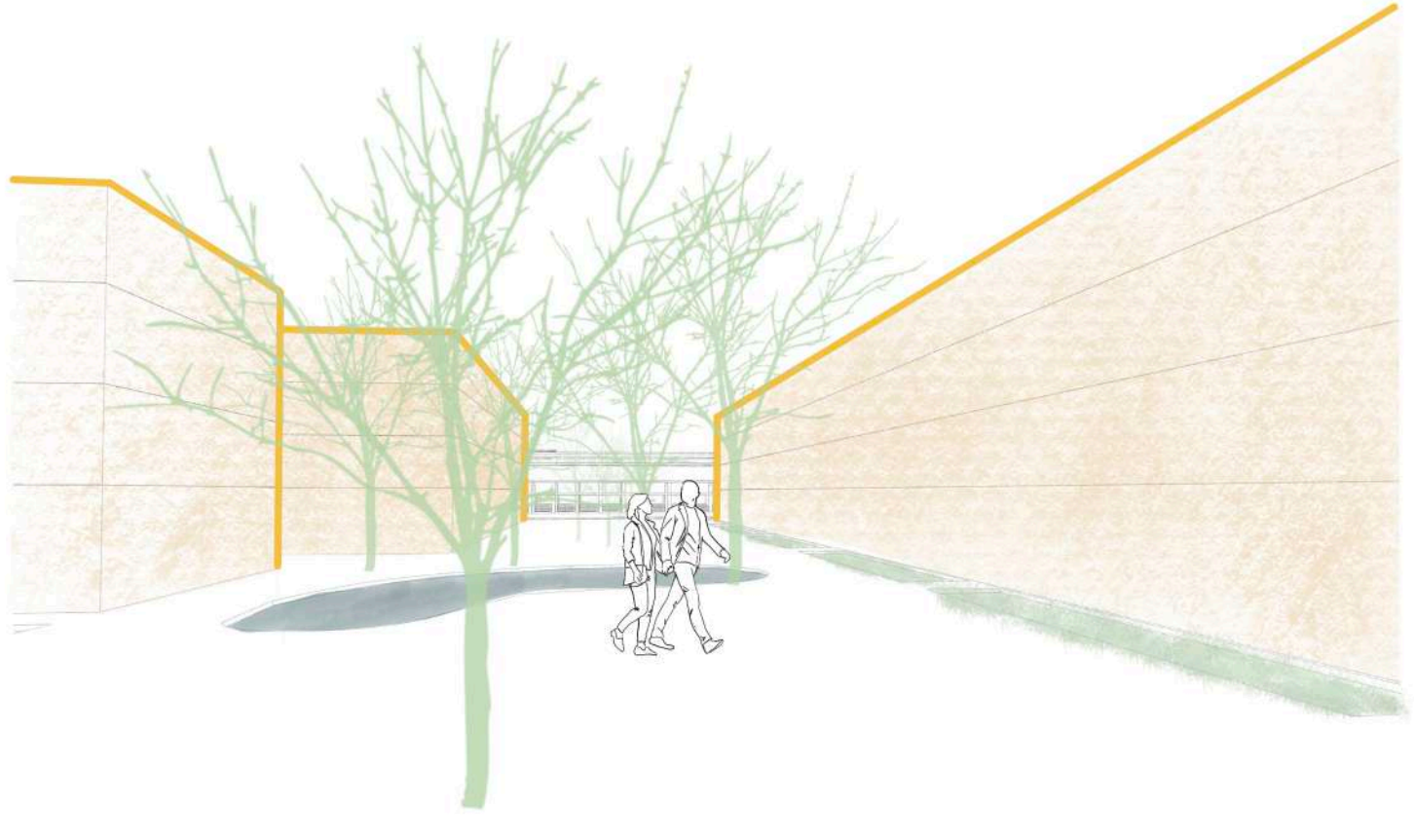
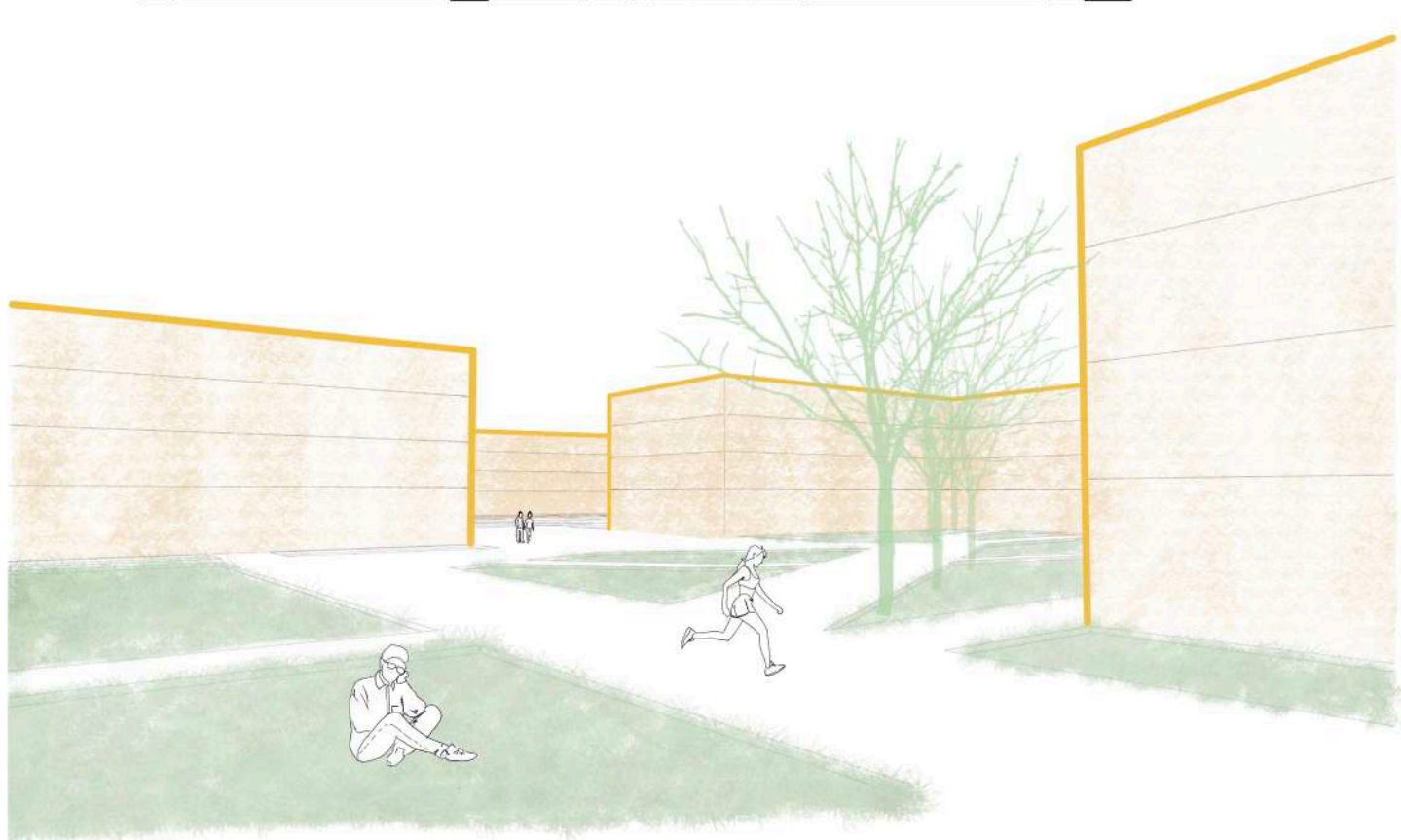


- 1 PAVILIONS
- 2 PARK
- 3 SMALL SQUARE
- 4 BIG SQUARE

THE MAIN STREET SECTION



THE BIG SQUARE SECTION



VIZE STRAHOV

ZUZANA NUCOVÁ, VERONIKA POKORNÁ, KRISTÝNA ŠTÉRBOVÁ

ATELIÉR KLOKOČKA A ZDRÁHALOVÁ - ÚSTAV URBANISMU - ATELIÉR REHWALDT A CONCEPCION - ÚSTAV KRAJINÁŘSKÉ ARCHITEKTURY - FA ČVUT - LS 2022