



PROLUKA NA FRANTIŠKU, PRAHA 1, STARÉ MĚSTO

Raquel Perez Rubio (555AT1)
Ateliér Lábus/Šrámek, FA ČVUT Praha, ZS 2022/23

SCHWARZPLAN

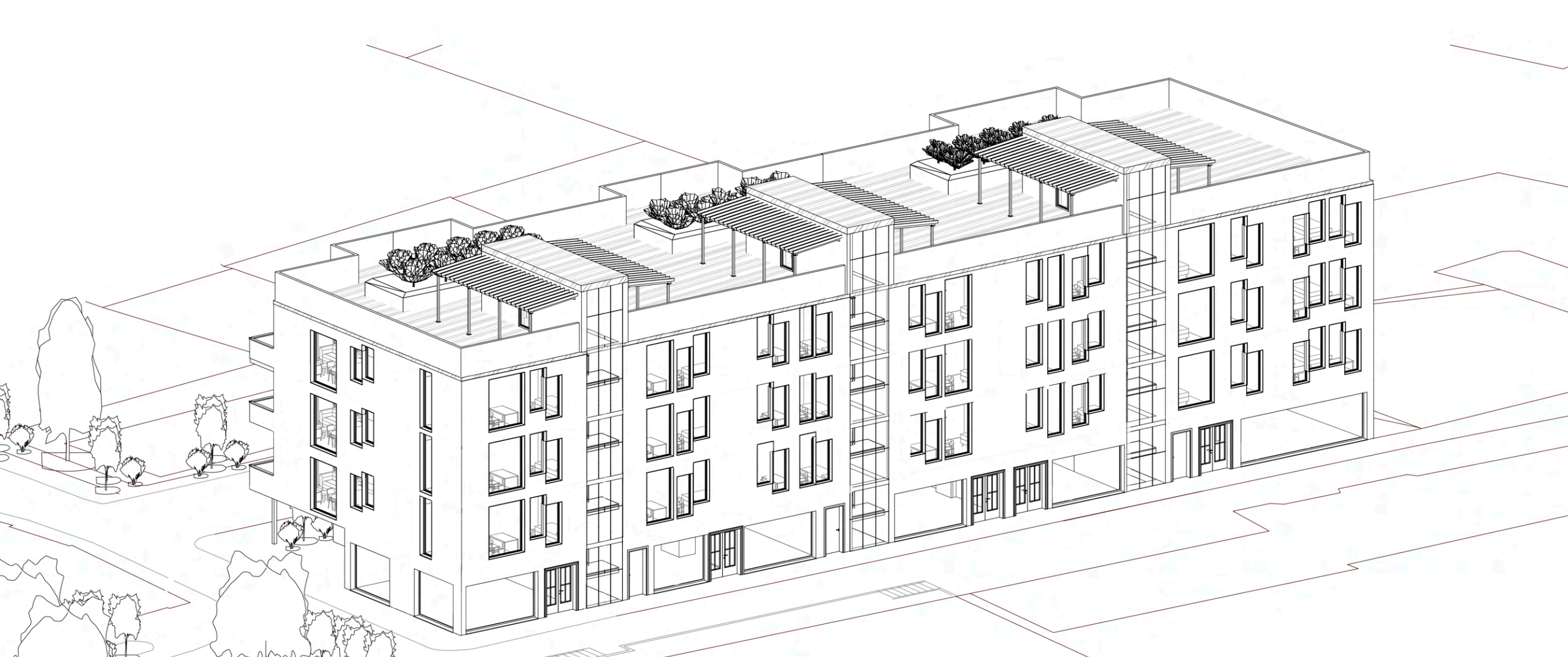


Residential building located at U MILOSRDNÝCH Street, in the town of František. It is located right on the plot that is now used as a parking space. To the north of the building we find the Moldavian River.

AXONOMETRIC VIEW N-E



AXONOMETRIC VIEW S-E



HOUSING TYPOLOGY

SCALE 1:75

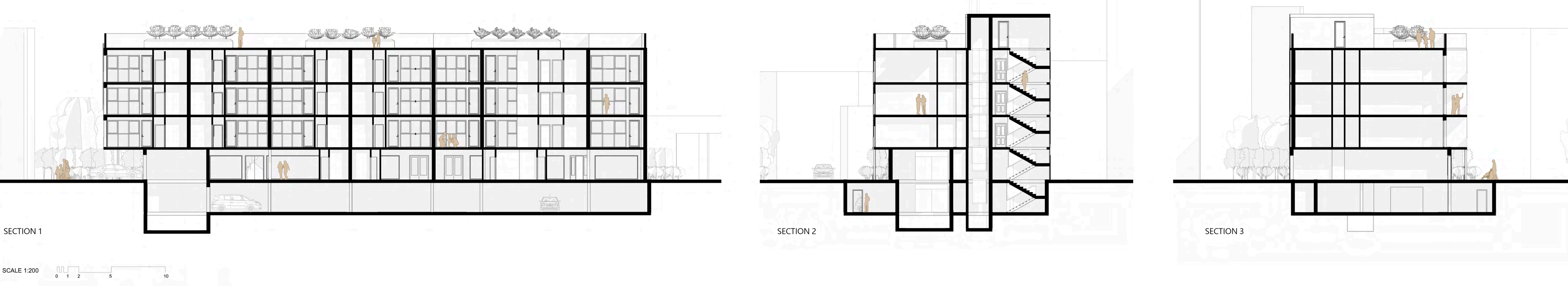
This type of housing has a size of 105.73 m². Inside the house there are the common areas, such as living room, kitchen, 2 bathrooms, and 3 bedrooms, two singles and one double. On each floor there are 4 dwellings of this type.

In this case, this housing is smaller, 90.7 m². Therefore there are only 2 bedrooms, one single and one double. As for common spaces, we have the living room, the kitchen and a bathroom.

This is the smallest apartment in the complex with 72.8 m². Due to its layout, we get 2 bedrooms, but unlike the previous type, this one has the possibility of two double bedrooms. As common areas, the previous typology is repeated.

The last case is somewhat larger than the previous two, 103.7 m². These dimensions allow the existence of 3 bedrooms, two of which are doubles. The common areas are the same, living room, kitchen and 1 bathroom.

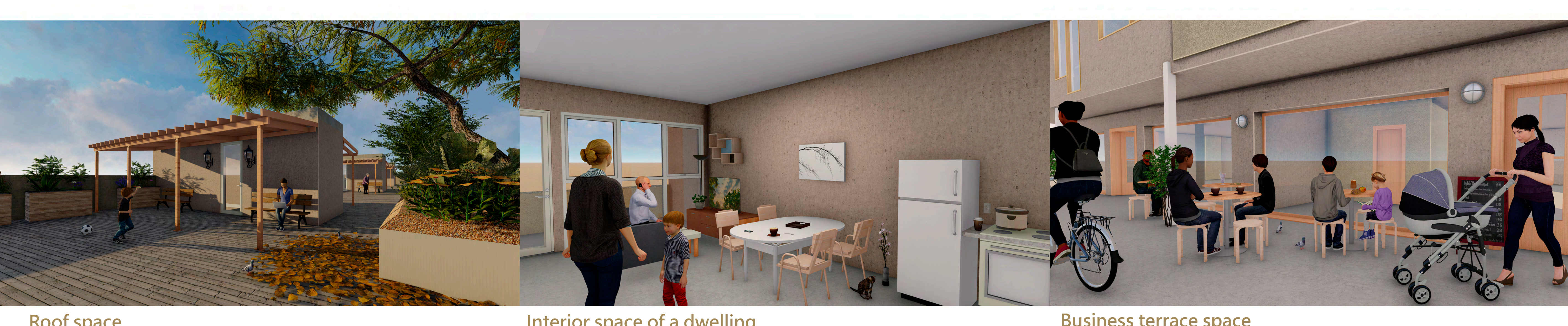
SECTIONS



FACADES



VISUALIZATIONS



Roof space Interior space of a dwelling Business terrace space