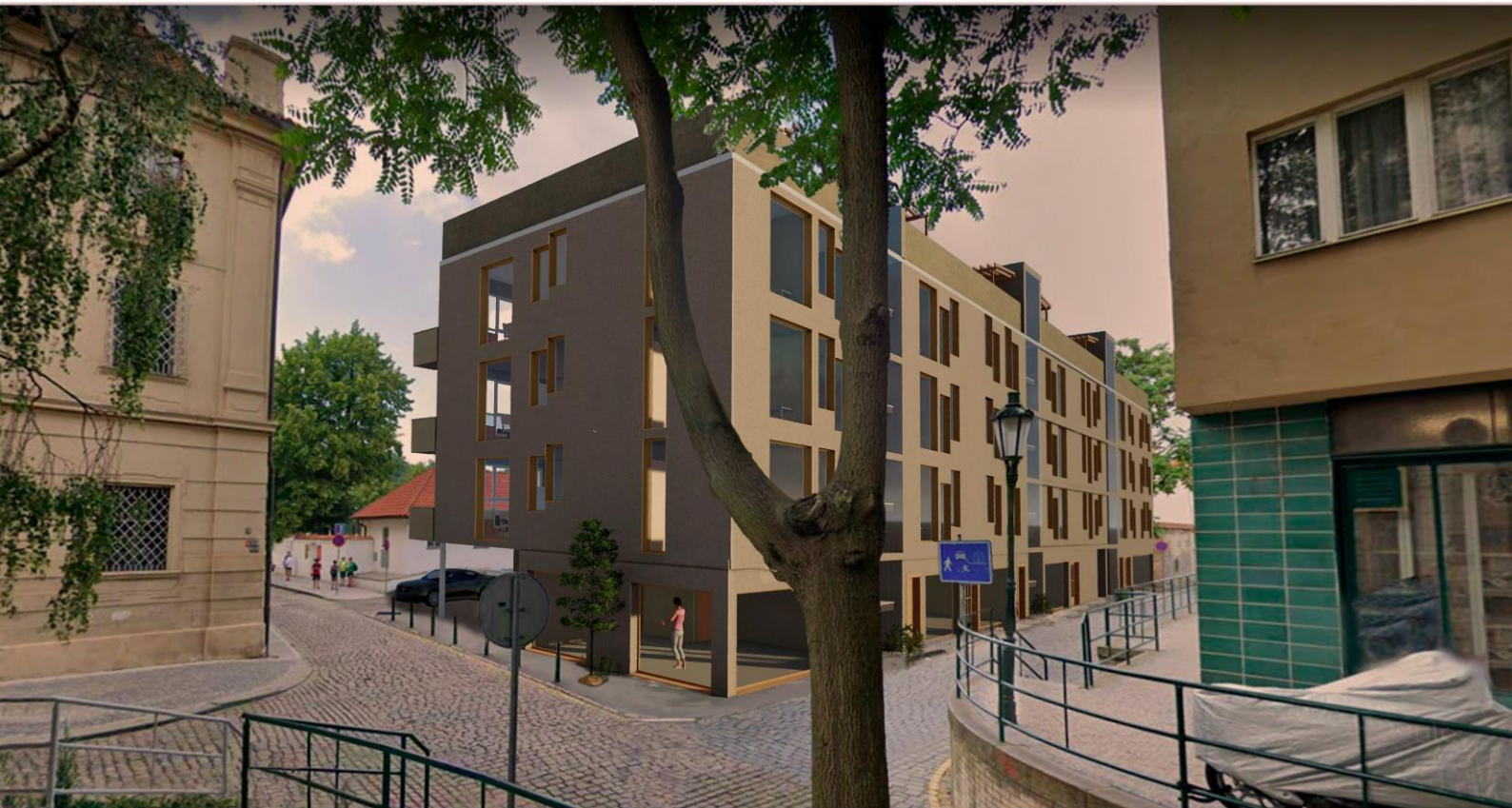


Residencial building

Na Františku

Raquel Perez Rubio



SITE PLAN



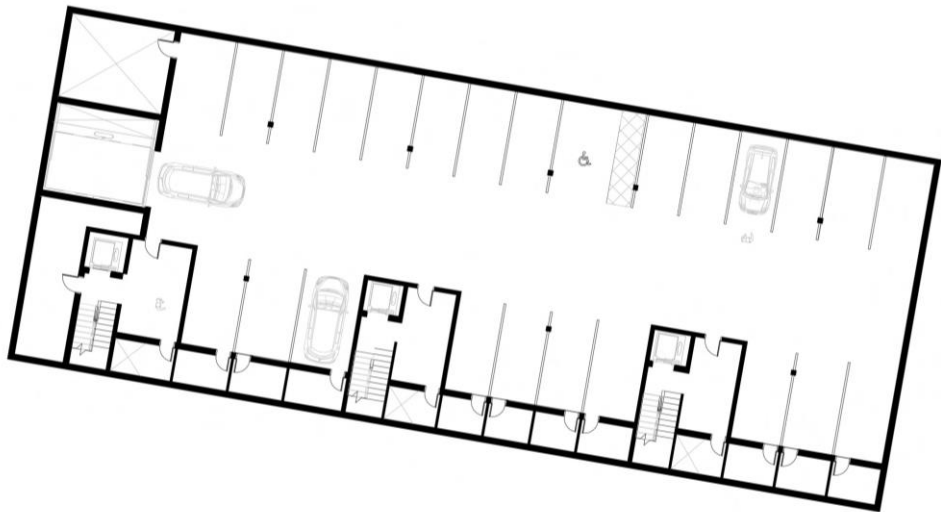
DESCRIPTION

Apartment building located in the historical centre of Prague. It has a first commercial ground floor and the other 3 remaining for housing. The apartments are about 100 square meters, for which a minimum of two rooms per apartment is placed. The building is completed with a common terrace, landscaped, where the neighbours can work in a common garden or enjoy the sun in summer. As for the facades, the windows are placed in an asymmetrical way to give musicality to it. In turn, the size of the windows allows more light to enter. To the north are the balconies of the apartments, which offer great views of the Vltava river.



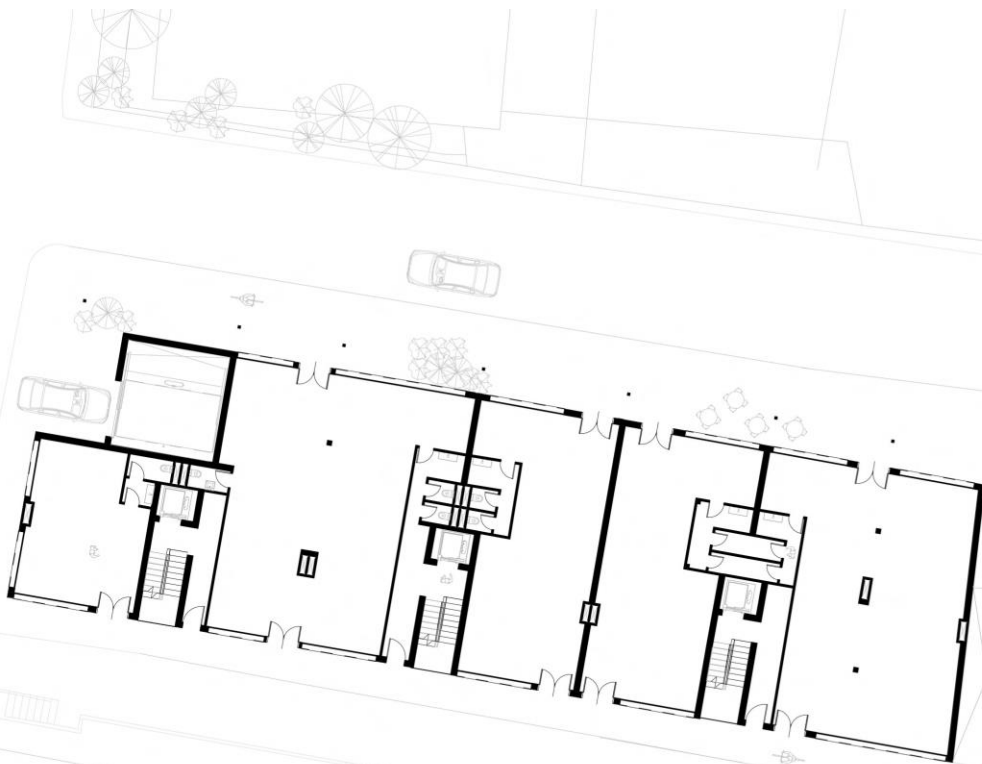
PARKING

The parking space extends along all the boundaries of the plot in a subway level. There are a total of 25 parking spaces including one for handicapped persons. There are also storage spaces.



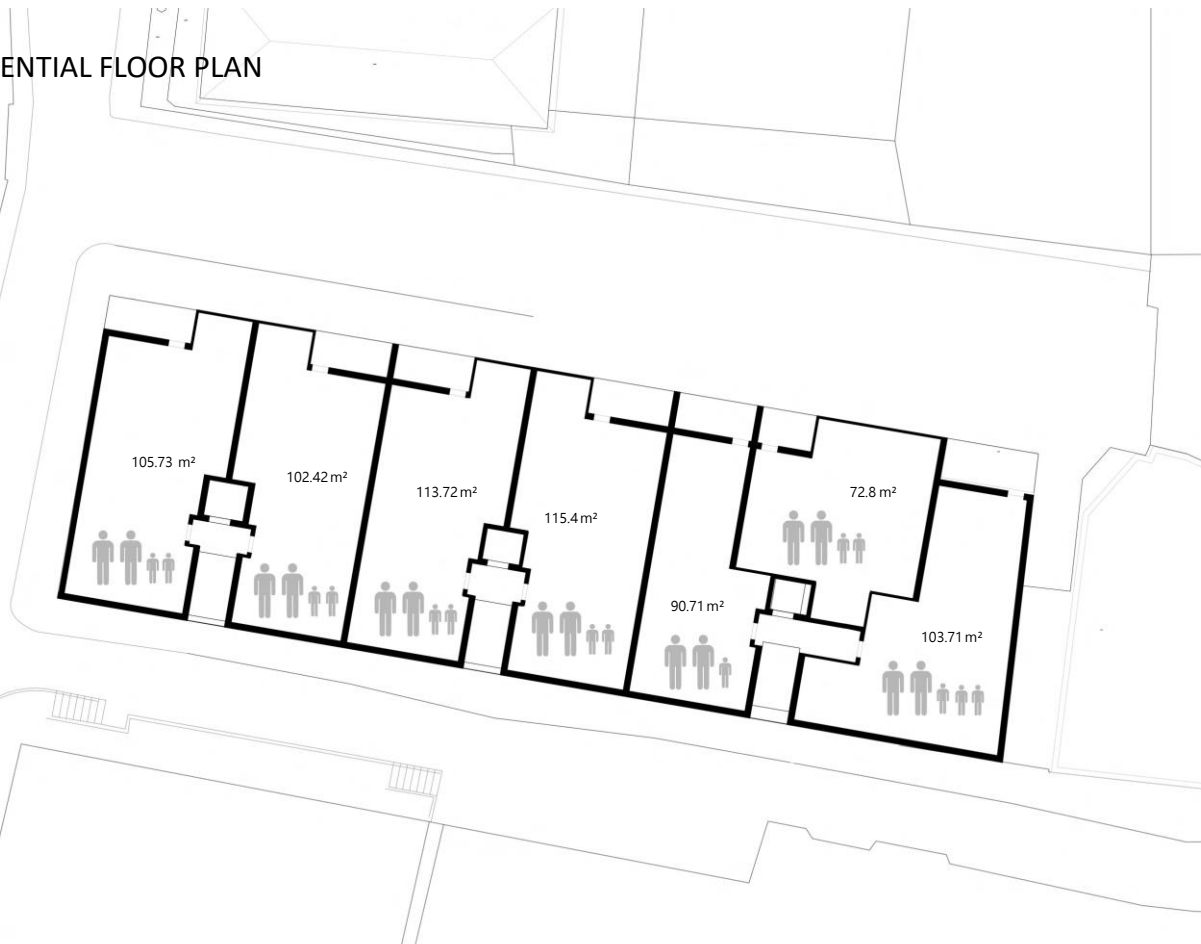
GROUND FLOOR

On the first floor of the building there are business spaces including back spaces for a possible terrace with tables.



DIMENSIONS OF THE RESIDENTIAL FLOOR PLAN

According to the diagram we can see how the square meters are evenly distributed in the first 4 apartments. On the other hand, in the last three apartments, as they have different floor plans, the smallest apartment appears with 72.8 square meters, and at the end the one with the most rooms in its interior.



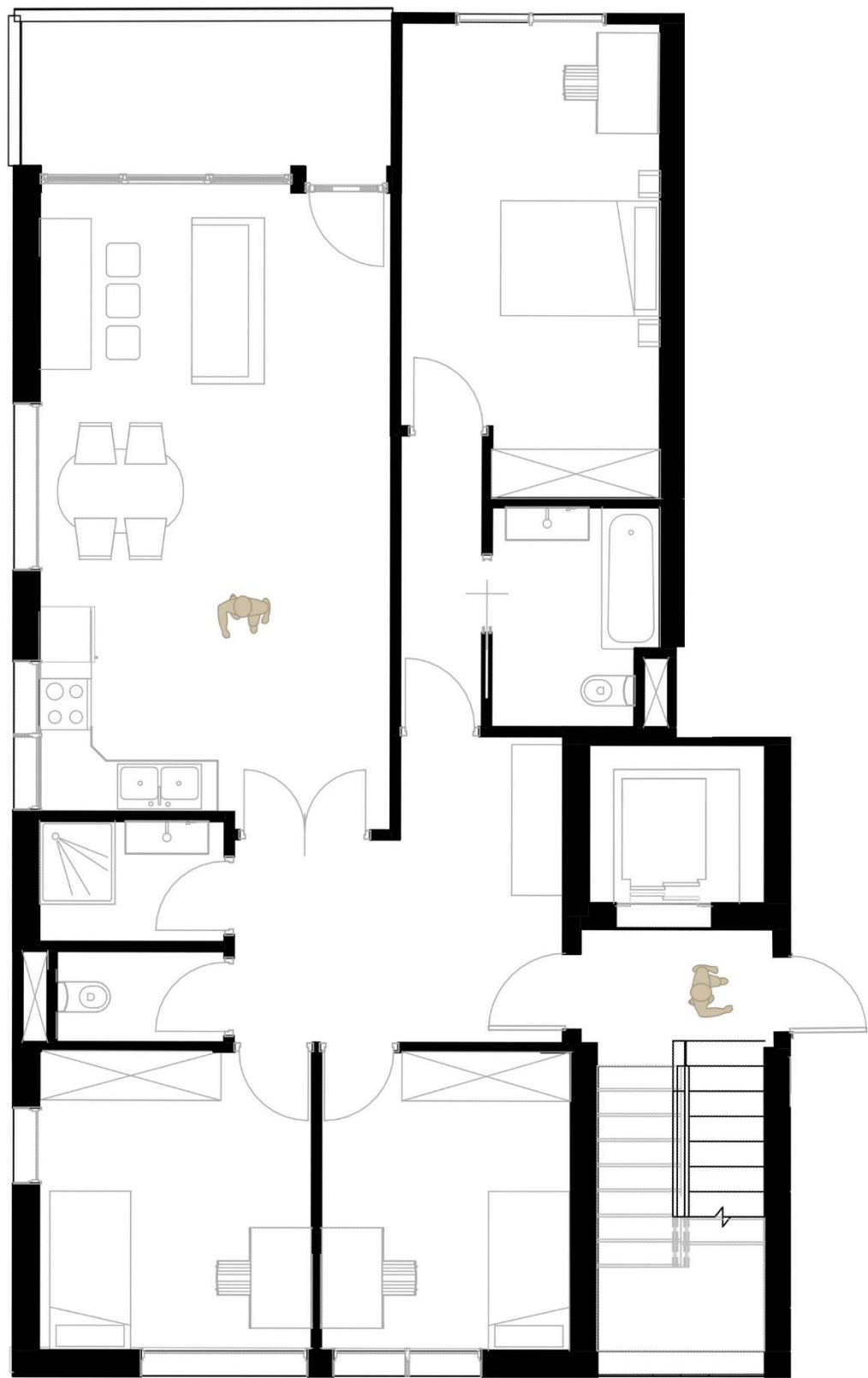
FIRST FLOOR

The floor plan is repeated on three levels, so there are a total of 21 dwellings. The first 4 are type 1, followed by type 2, 3 and 4. All of them follow the same rule of having a small terrace and an open concept kitchen connected to the living room.



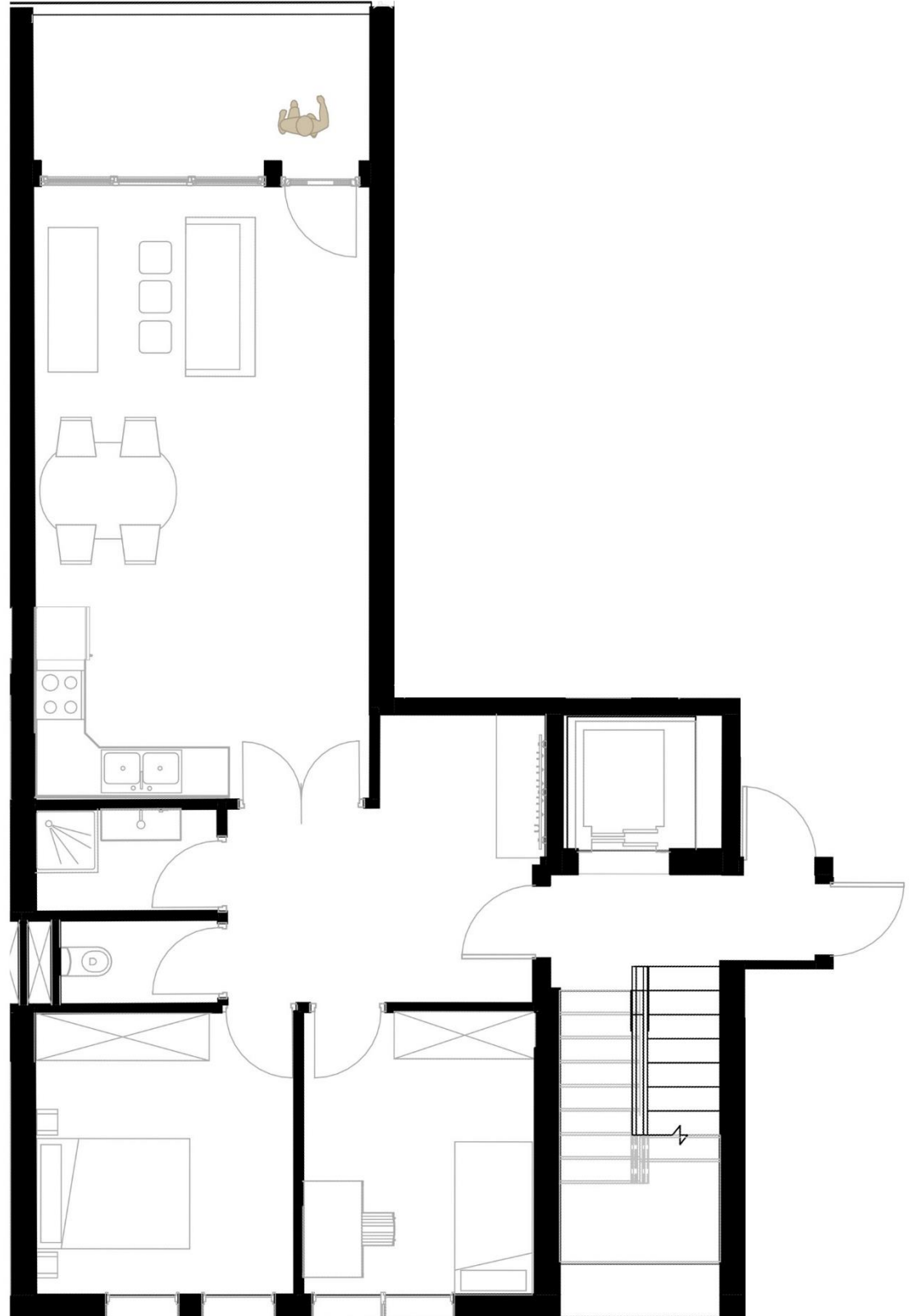
HOUSING TYPOLOGY

This type of housing has a size of 105.73 m2. Inside the house there are the common areas, such as living room, kitchen, 2 bathrooms, and 3 bedrooms, two singles and one double. On each floor there are 4 dwellings of this type.



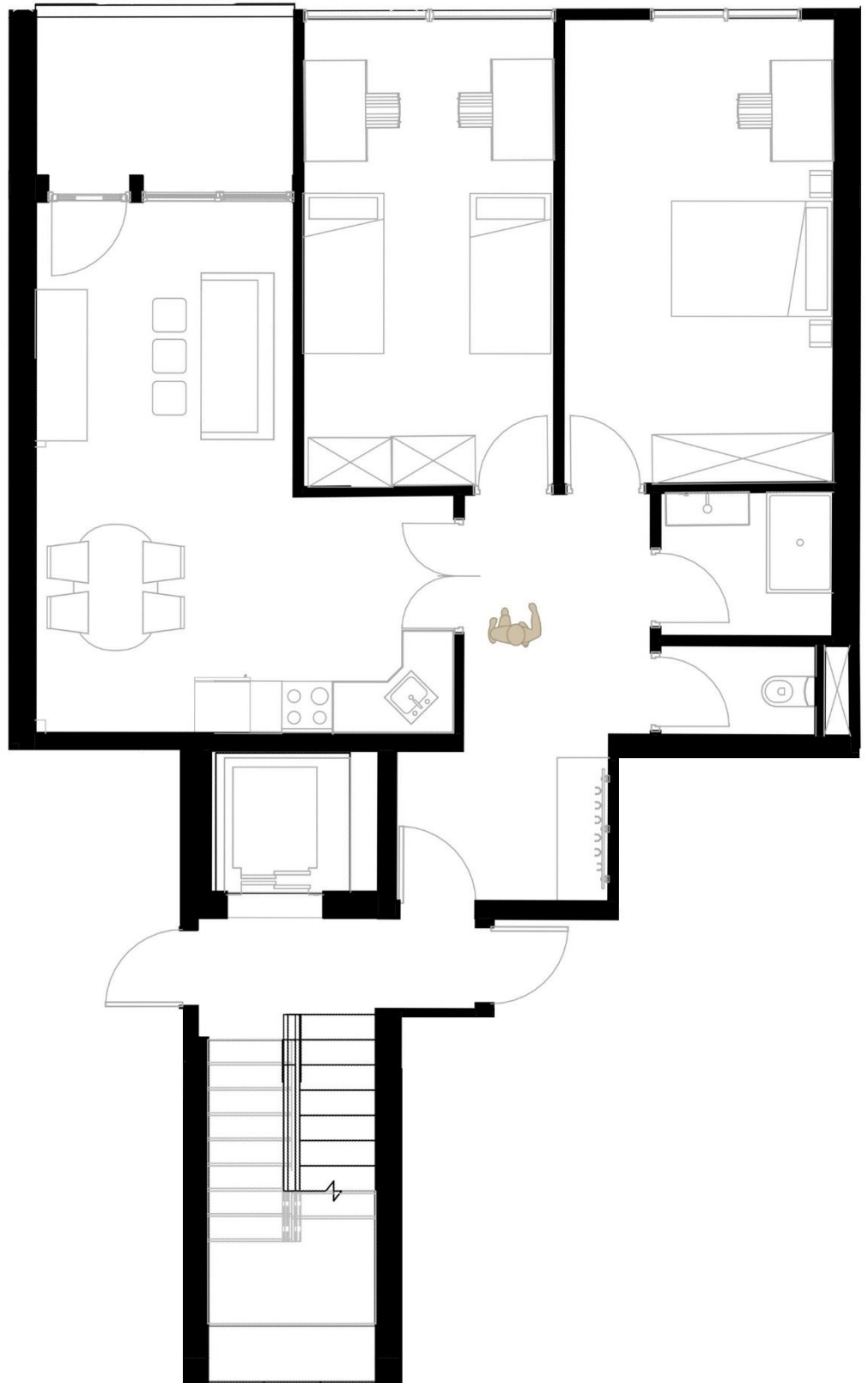
HOUSING TYPOLOGY

In this case, this housing is smaller, 90.7 m². Therefore there are only 2 bedrooms, one single and one double. As for common spaces, we have the living room, the kitchen and a bathroom.



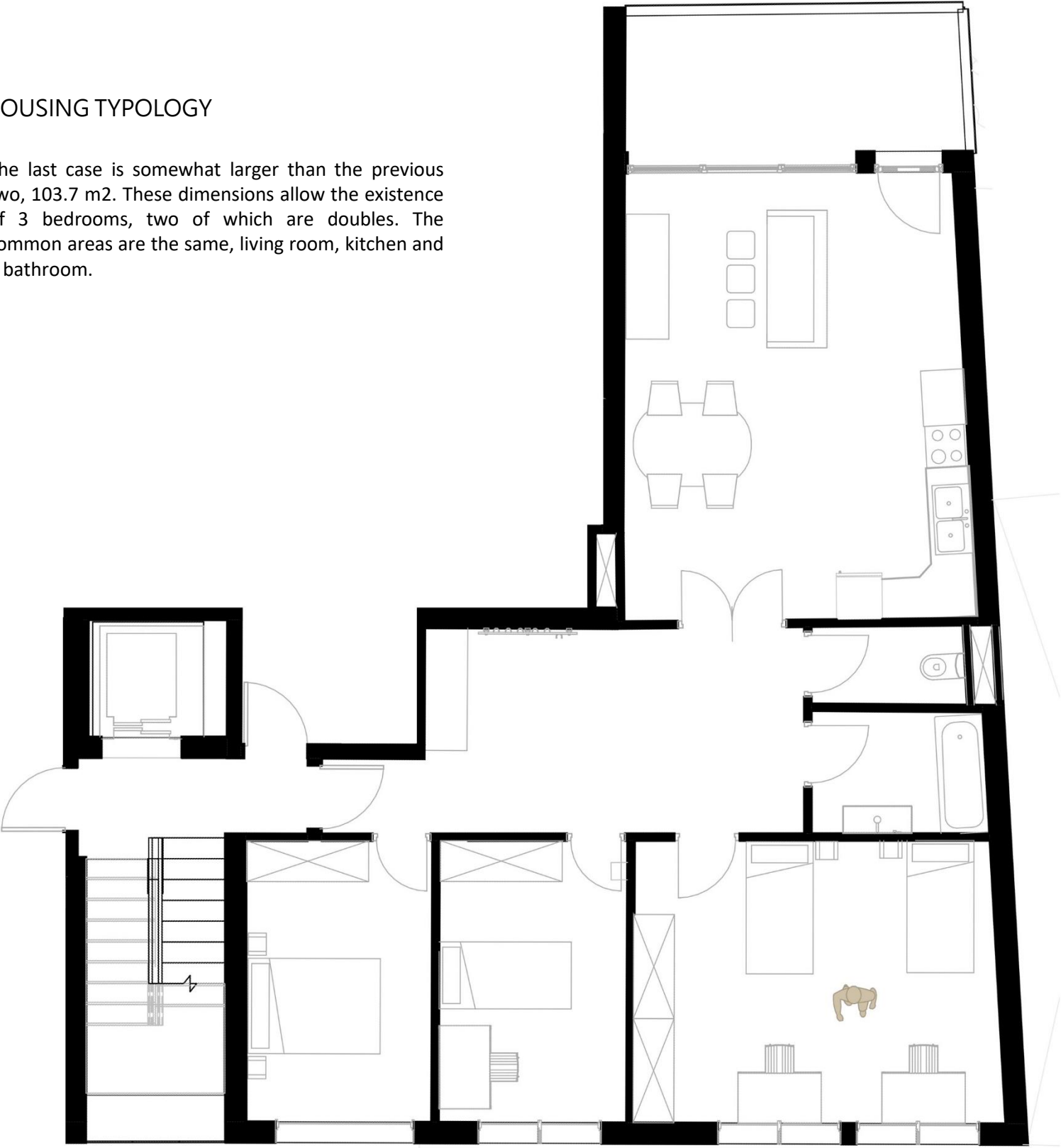
HOUSING TYPOLOGY

This is the smallest apartment in the complex with 72.8 m². Due to its layout, we get 2 bedrooms, but unlike the previous type, this one has the possibility of two double bedrooms. As common areas, the previous typology is repeated.



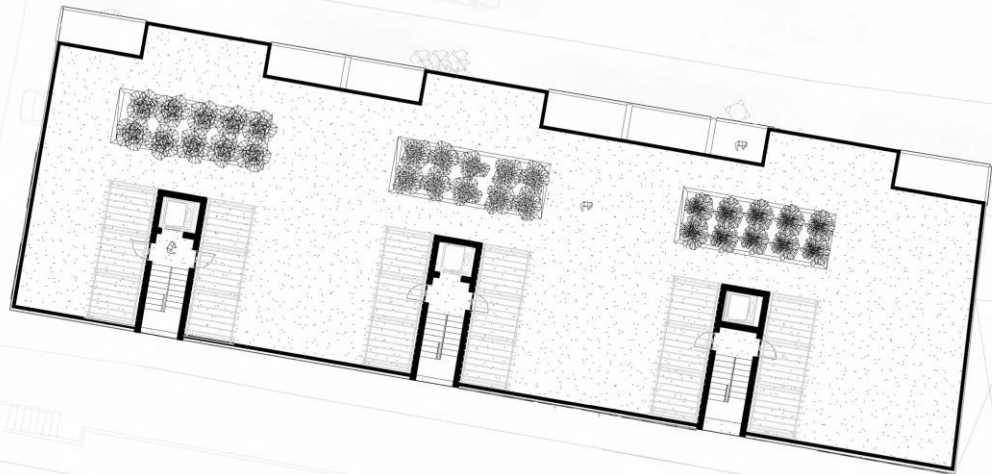
HOUSING TYPOLOGY

The last case is somewhat larger than the previous two, 103.7 m2. These dimensions allow the existence of 3 bedrooms, two of which are doubles. The common areas are the same, living room, kitchen and 1 bathroom.



ROOF PLAN

The roof, being flat, takes advantage of the space for a common area, or a possible garden where the neighbours work. elements appear to create shade and seating areas, as well as play areas for children.

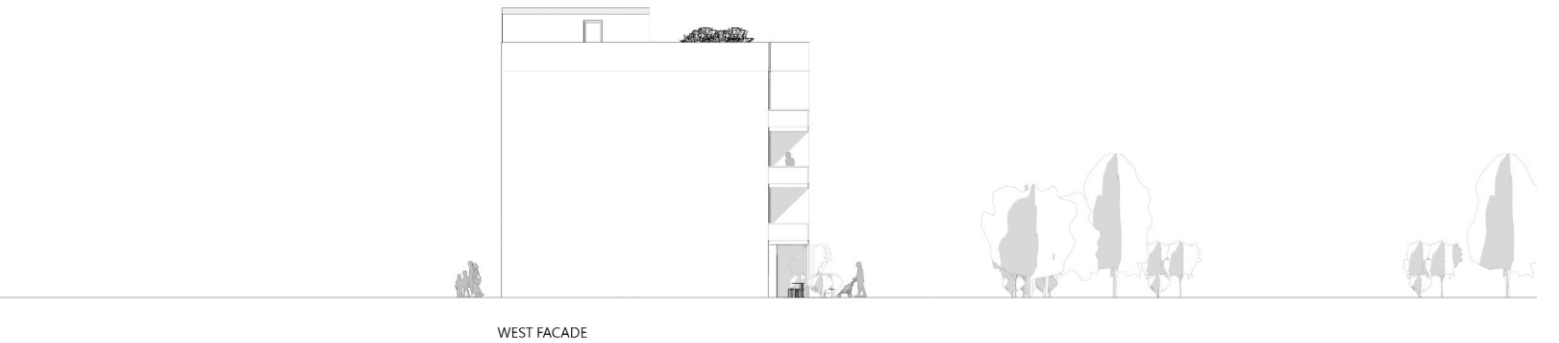


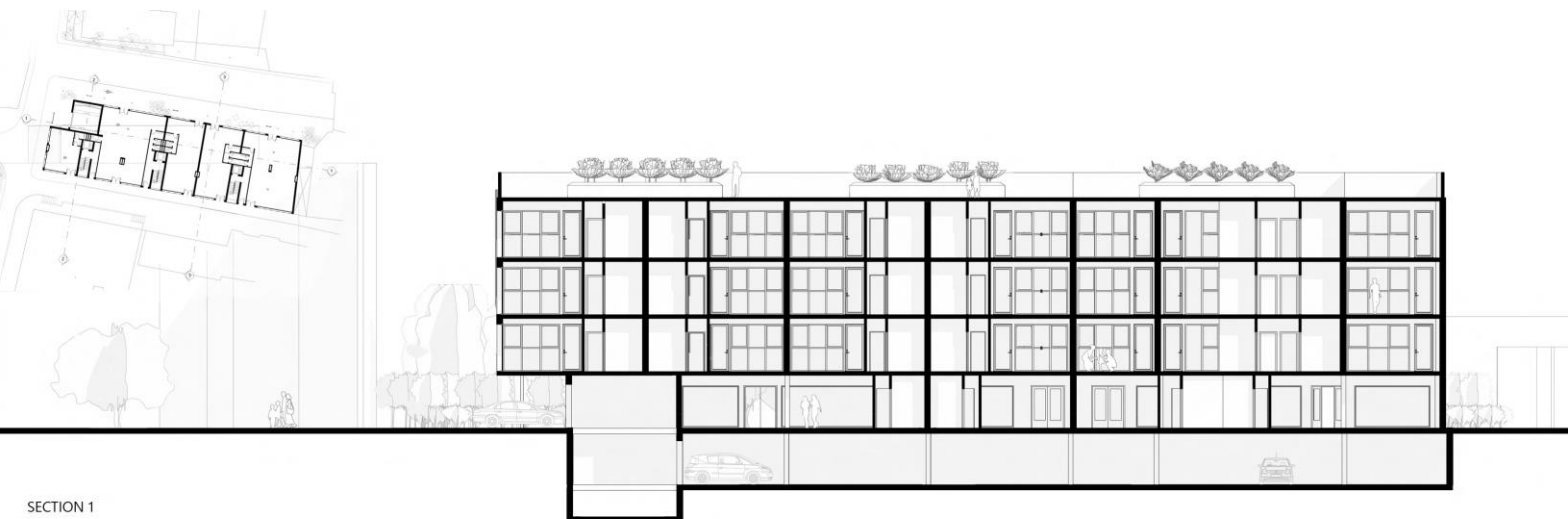
SCALE 1:200

0 1 2 5 10

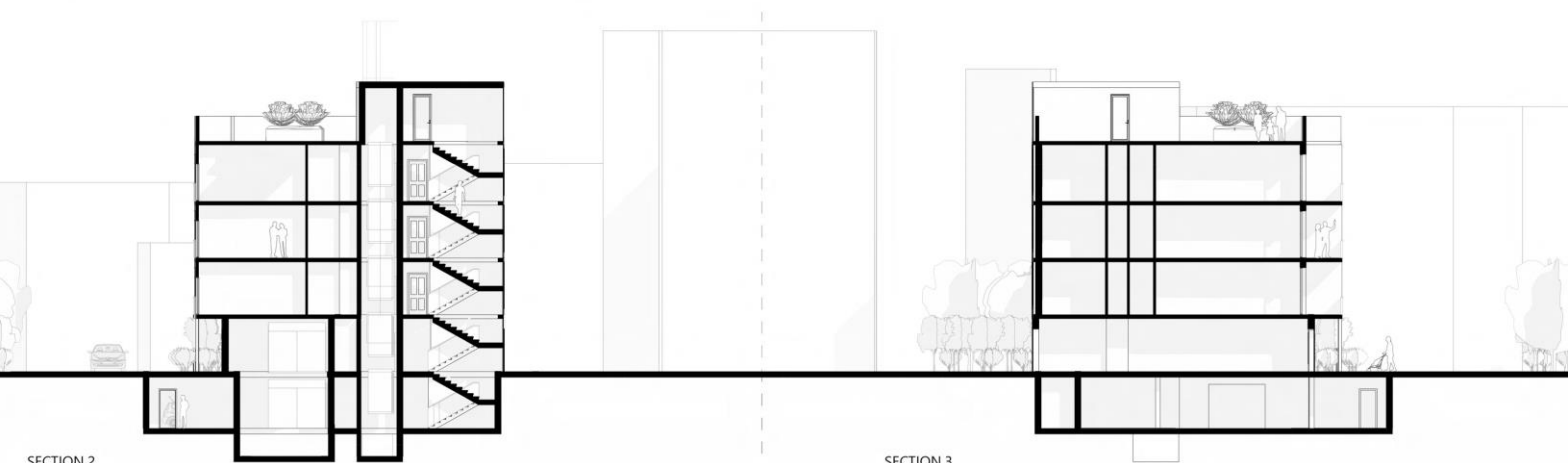


FACADES





SECTION 1



SECTION 2

SECTION 3

SCALE 1:200





Business terrace space



Interior space of a dwelling



Roof space

