

**B03**





# BLATNÁ NEW VILLAGE

## ALEISTER HODSON

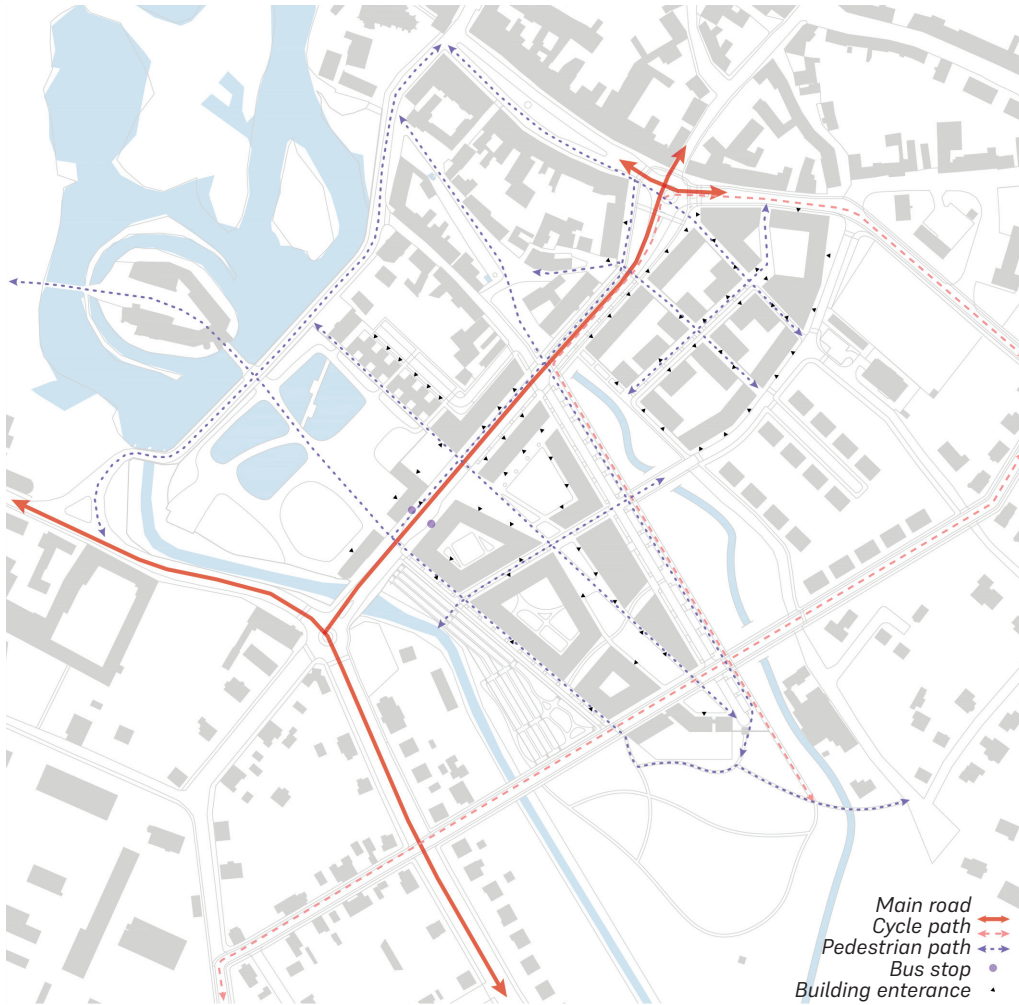
Blatná New Village is an urban project aiming at creating a quality entrance to the south by transforming the land and revealing its potential. The project was thought out in three phases to facilitate its completion. Firstly, the creation of Blatná's rose garden in the place of the fishery helps reconnect the people to the town's history and honours castle's cultural heritage. A second phase will replace the commercial hangars at the entrance of the town with a new village center creating new links between both sides of the river and reconnecting the newer parts of town to the historical centre. Finally A third phase suggests to replace the imposing 90s apartment structure, which sits awkwardly right in the centre, with a smaller neighbourhood built at a human scale.

The New Village project also looks into more detail the architecture of two new buildings of public importance: a library and an elder care complex. The library which sits right along the main boulevard and in front of the castle gardens is the entrance to the neighbourhood. The bloc in the form of a trapeze includes a main library building made out of brick and wood structure. It also accommodates a restaurant open towards the river bank and a large shared workspace with multiple co-working offices and some classrooms. The elder care complex has within a doctor office wing open to the wider public with the aim to share uses. The rest of the ground floor contains an entrance hall to the north-east with offices, some apartments to the south-east and a large cafeteria towards the river. The first and only floor accommodates apartments and common spaces. The facility hosts up to 50 beds.

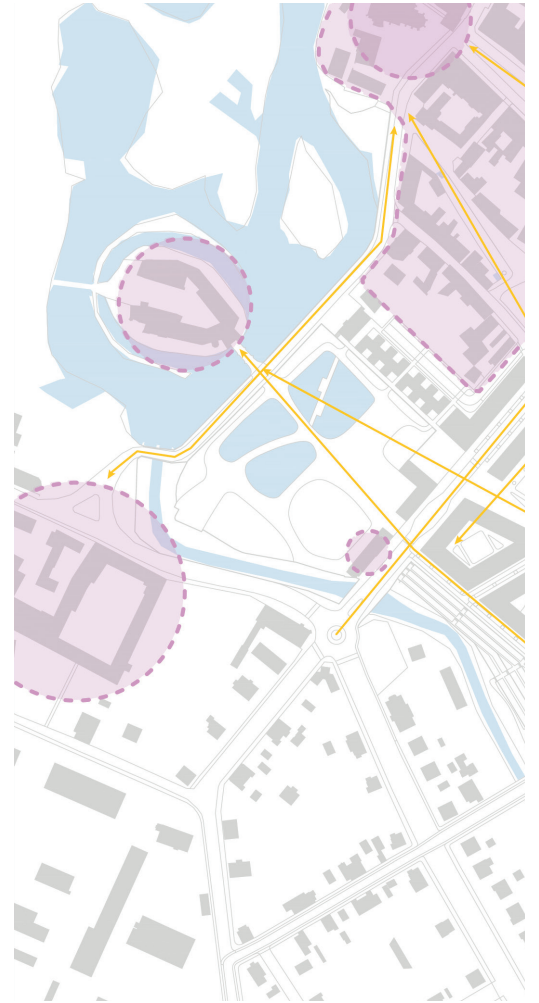




*Access Map*

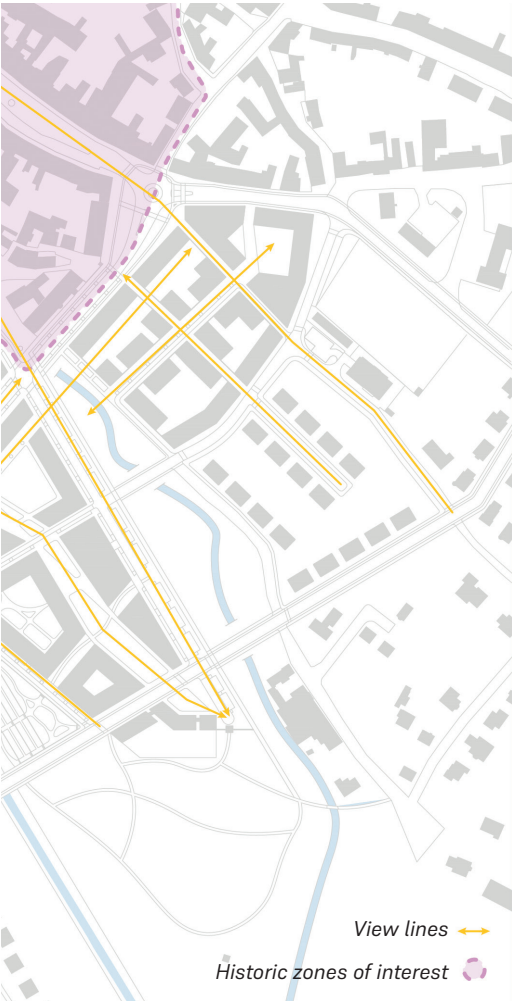


*View Lines*





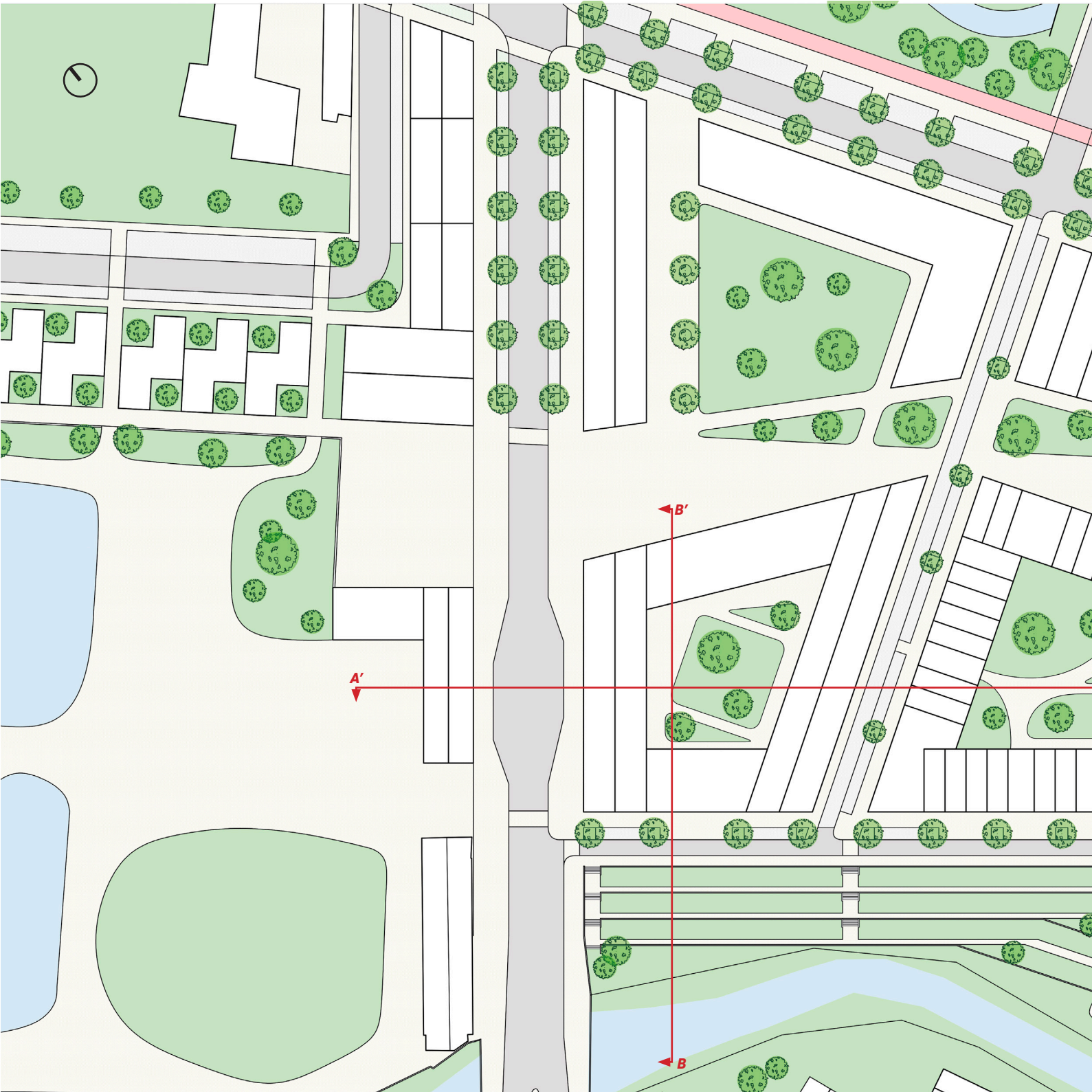
Map



Function Map



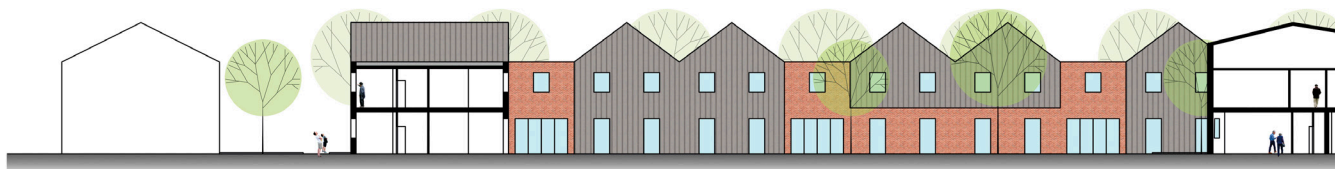
SITE ANALYSIS







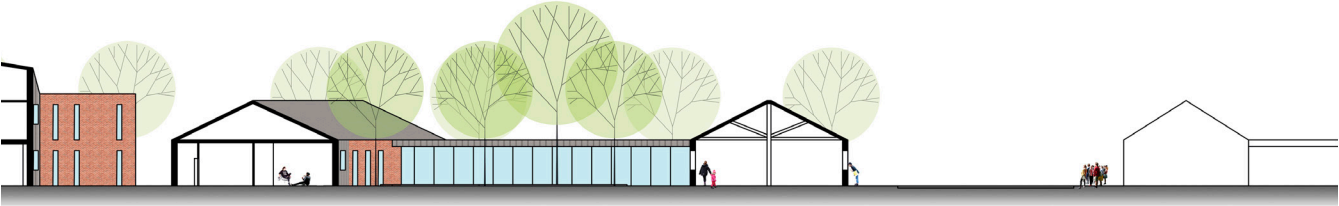
ARCHITECTURE PROJECT SITUATION PLAN



AA' SECTION



BB' SECTION - 1/500

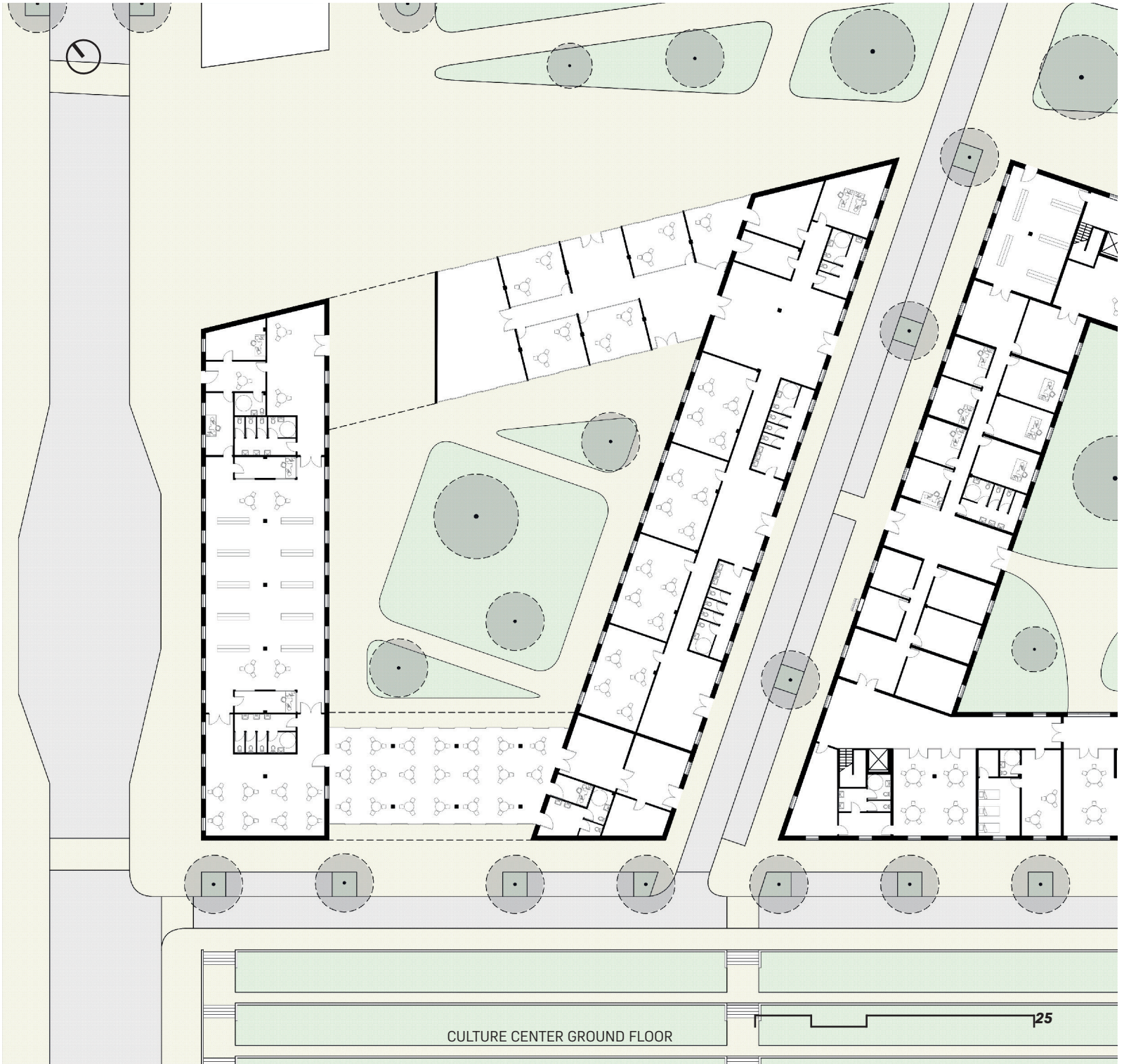


- 1/500



CC' SECTION - 1/500



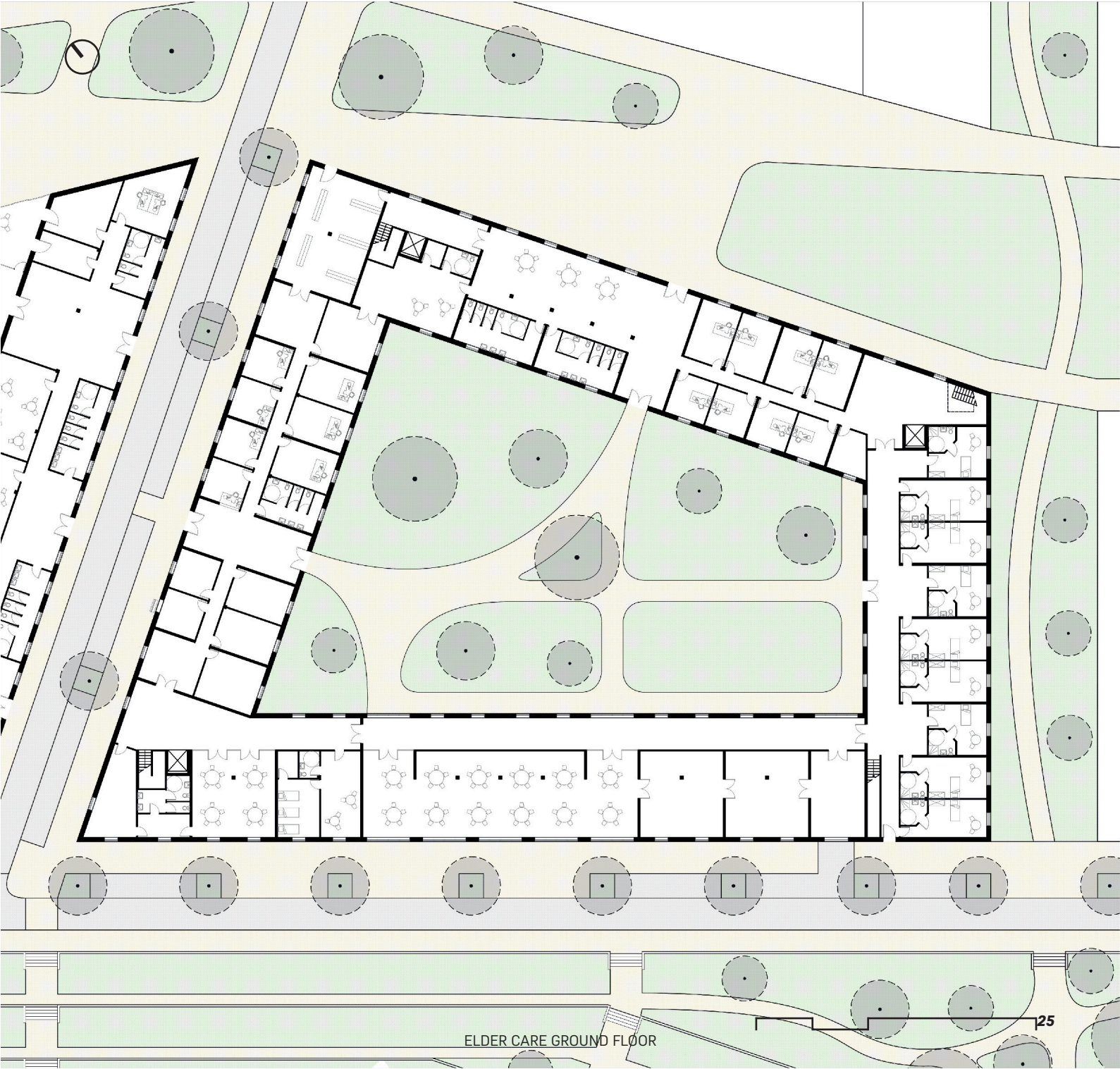






DETAIL OF THE CULTURE CENTER PUBLIC SPACE





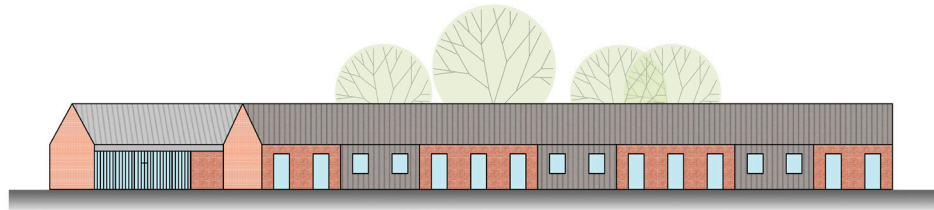
ELDER CARE GROUND FLOOR



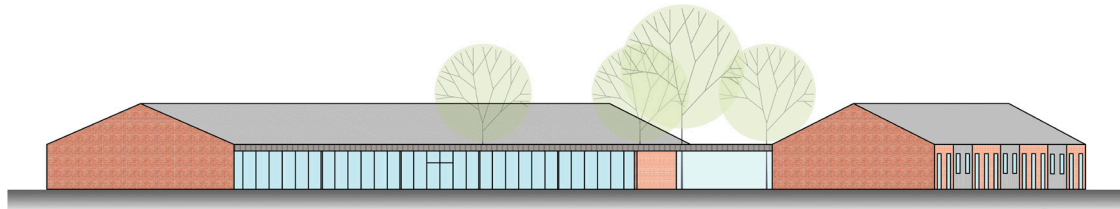


ELDER CARE FIRST FLOOR

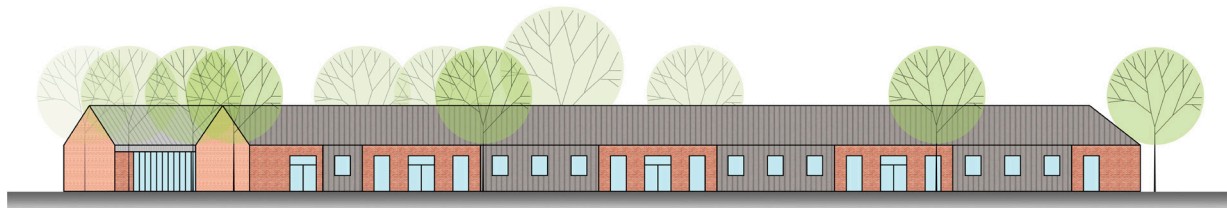




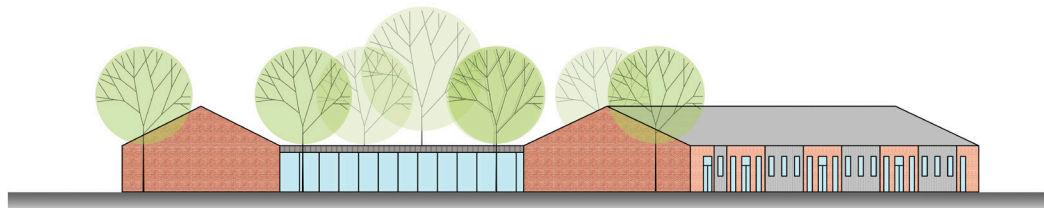
**LIBRARY NORTH WEST VIEW - 1/500**



**WORKING SPACE NORTH EAST VIEW - 1/500**



**WORKING SPACE SOUTH EAST VIEW - 1/500**



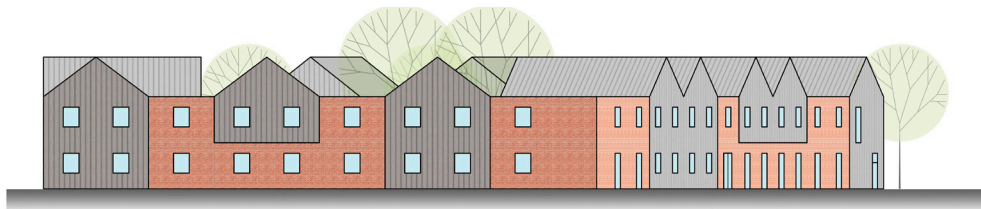
**RESTAURANT SOUTH WEST VIEW - 1/500**



**ELDER CARE HEALTH CENTER NORTH WEST VIEW - 1/500**



**ELDER CARE ENTERANCE NORTH EAST VIEW - 1/500**



**ELDER CARE APPARTMENTS SOUTH EAST VIEW - 1/500**



**ELDER CARE CANTEEN SOUTH WEST VIEW - 1/500**





CULTURE CENTER

overall floor space 1800 m<sup>2</sup>

LIBRARY: 550 m<sup>2</sup>

public area 490 m<sup>2</sup>

employee area 60 m<sup>2</sup>

RESTAURANT: 300 m<sup>2</sup>

service room 190 m<sup>2</sup>

kitchen & services 110 m<sup>2</sup>

CO-WORKING: 935 m<sup>2</sup>

shared offices/classrooms 425 m<sup>2</sup>

5 co-working rooms

4 classrooms

1 meeting room

public area 400 m<sup>2</sup>

employee area 110 m<sup>2</sup>

ELDER CARE

overall floor space 5 500 m<sup>2</sup>

per floor (2) 2 250 m<sup>2</sup>

APPARTMENTS: 1440 m<sup>2</sup>

type A (38) 30 m<sup>2</sup>

type B (12) 25 m<sup>2</sup>

HEALTH CENTER: 515 m<sup>2</sup>

pharmacy 80 m<sup>2</sup>

public space 185 m<sup>2</sup>

doctor office/medical room 250 m<sup>2</sup>  
(12)

SHARED SPACES: 1820 m<sup>2</sup>

canteen 210 m<sup>2</sup>

enterance hall 170 m<sup>2</sup>

activity rooms (3) 265 m<sup>2</sup>

public space 1 175 m<sup>2</sup>

TECHNICAL SPACES: 740 m<sup>2</sup>

admin offices (9) 190 m<sup>2</sup>

kitchen 175 m<sup>2</sup>

break rooms (2) 130 m<sup>2</sup>

laundry rooms (4) 75 m<sup>2</sup>

other 170 m<sup>2</sup>

TABLE











