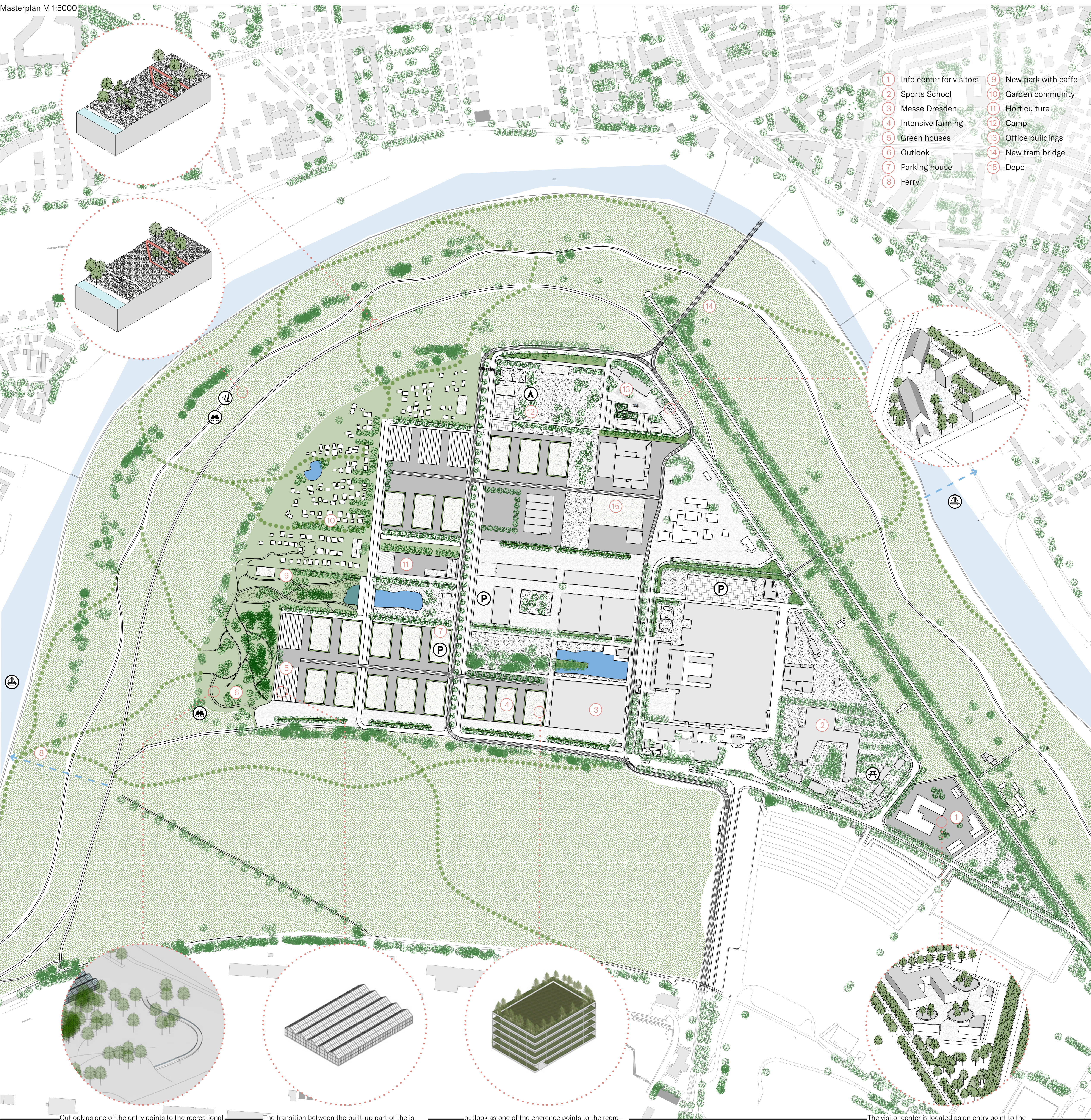


# OSTRA ISLAND

Masterplan M 1:5000



- 1 Info center for visitors
- 2 Sports School
- 3 Messe Dresden
- 4 Intensive farming
- 5 Green houses
- 6 Outlook
- 7 Parking house
- 8 Ferry
- 9 New park with cafe
- 10 Garden community
- 11 Horticulture
- 12 Camp
- 13 Office buildings
- 14 New tram bridge
- 15 Depo

Outlook as one of the entry points to the recreational area is situated on the edge of the island. It offers the view down the river and along the meadows in the floodplain.

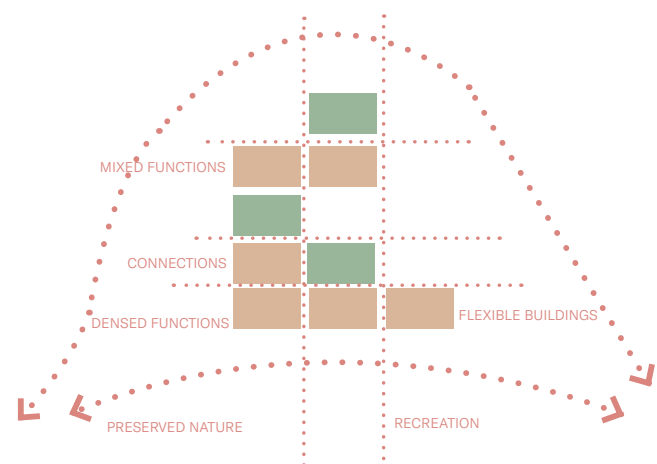
The transition between the built-up part of the island and the park is addressed by lower buildings to create a more subtle interface.

outlook as one of the encrence points to the recreational area is situated on the edge of the island. It offers the view down the river and along the meadows in the floodplain .

The visitor center is located as an entry point to the area. It brings together the necessary services, ecological center, bicycle rental, dining area...

## Concept

the project proposes new connections to the other bank of the river, adds road networks to the existing grid, and proposes flexible buildings for the resulting blocks.

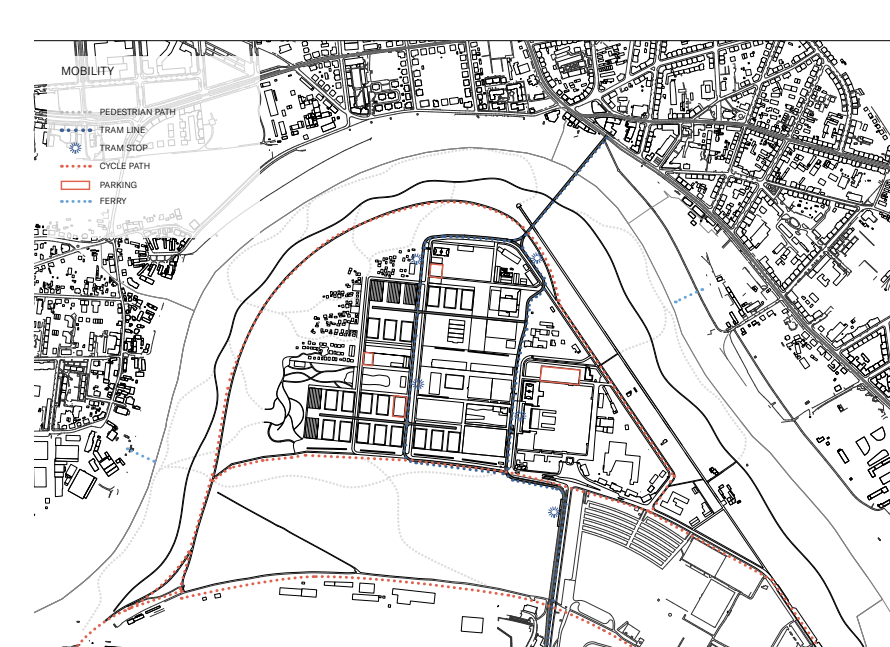


## Recreation

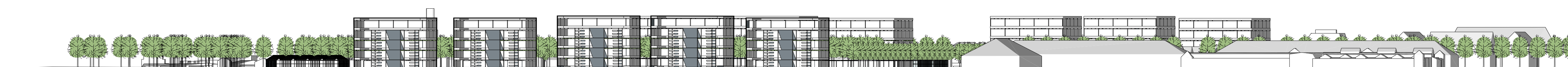
The main recreational area is a park in the river floodplain. Its natural character is preserved and is complemented by cycle paths and pedestrian links. Accommodation places with furniture near the cycle path and river banks are added. The park is connected to the inner part of the island by smaller park areas and green belts

## Agriculture

agriculture is placed in flexible futures in the form of vertical farms. Due to the threat of flooding, the buildings are considered as transformable structures. If necessary, the structure can be used for other functions, such as temporary housing, parking garages, warehouses, business



Section A-A'



Section B-B'

