



**THE MAIN FOCUS**

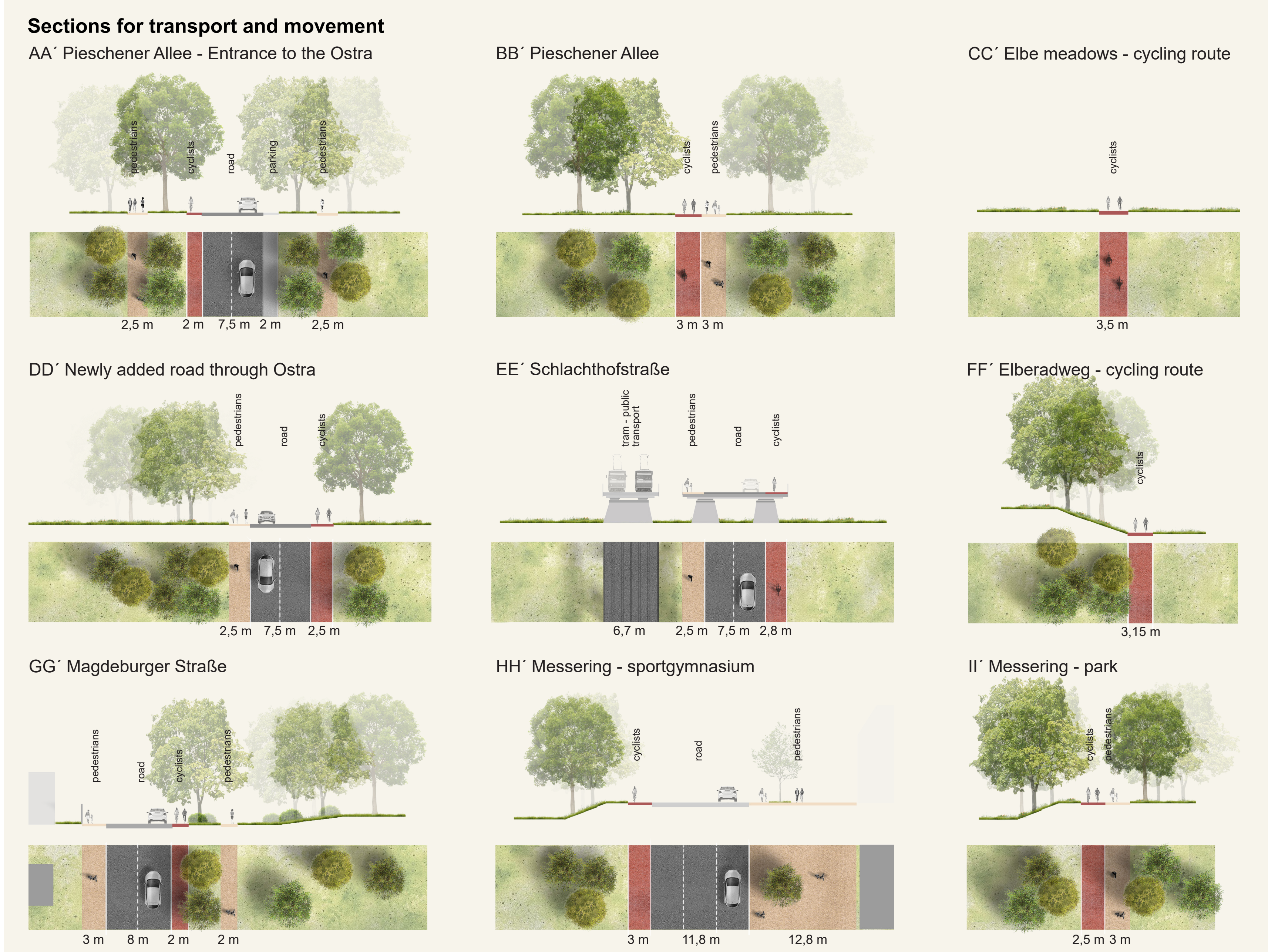
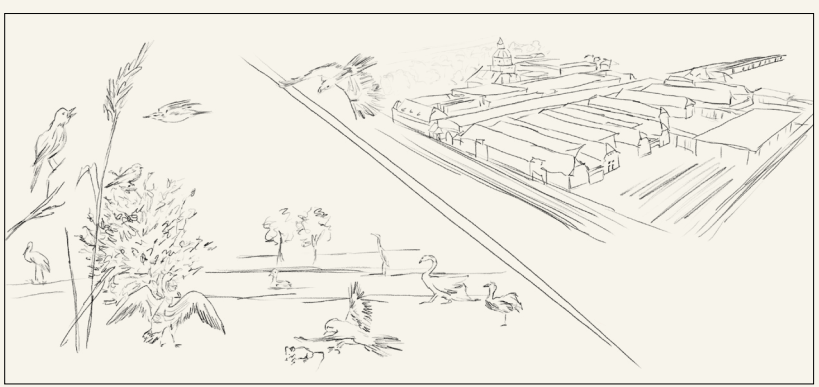
The main goal of the design is to create its own identity for Ostragehege for decades to come. The place needs to function as a whole and not as scattered individual residual functions.

The draft focuses is to create new functions and filling for public spaces and connections to other side of the Elbe river. The design is based on the historical structure of the site, such as the water features in the flood channel or the regular grid of former slaughterhouse.

Further focus is on the connection of Ostragehege with the surrounding places and on the very improvement of traffic communication and connectivity. There are both transport and pedestrian connections to the other bank of the Elbe. Due to the convenient location of the area near the center of Dresden, emphasis is placed on promoting bicycle traffic and limiting car traffic.

The emphasis is placed on the issue of climate change, when floods and long-term droughts occur. Designed vegetation and water features help to retain water in the soil and slow its evaporation as well as creates safe places for nesting birds and animals.

# TWO sides of OSTR



## Section BB' Elbe meadows

The Elbe meadows are typical smooth oat meadows, where both fauna and flora are protected. The Elbe valley is an important resting, migration and feeding area for water bird species.

For this purpose, the support of riparian vegetation and the establishment of biotopes corresponding to places for nesting animals and birds is proposed. Mowing the meadows is achieved by using sheep.

For the movement of people, it is proposed to modify field roads, by making a threshed surface and designing a cycle path to increase tourism in the place.

