

Bc. Dastan Mamatov

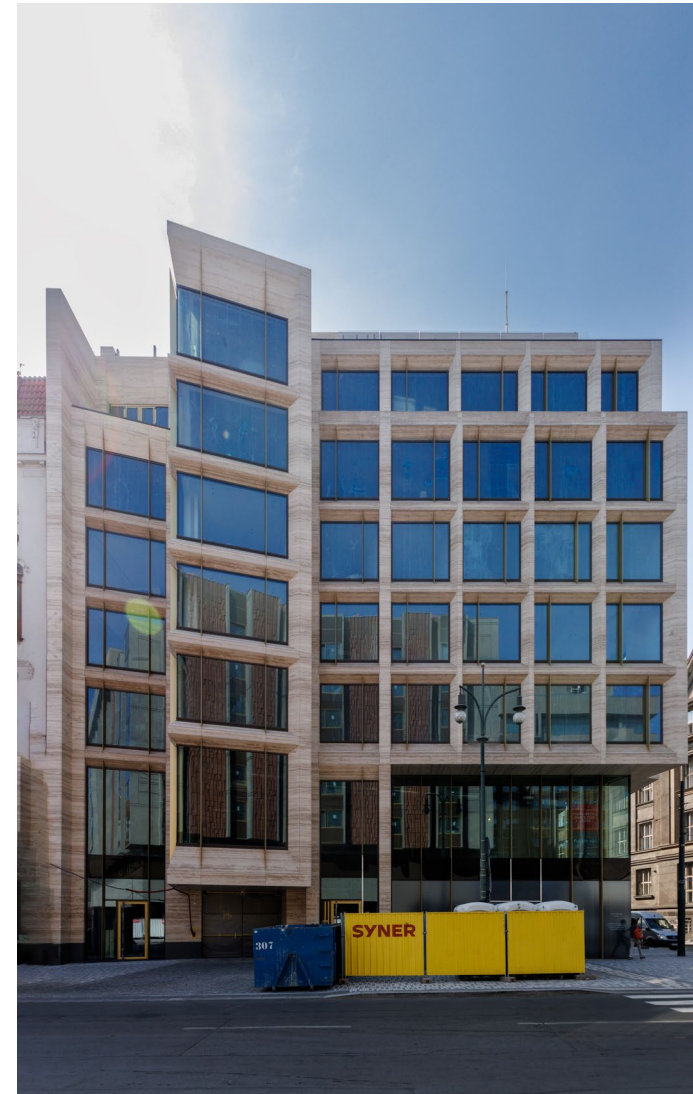
Apple store **PORTFOLIO**

Achten & Pavlíček & Sýsová
ATVZ - ZS 2023/2024



ANALYSIS

facades of surrounding buildings





REFERENCES

WHICH MATERIALS ARE USED IN APPLE STORES?

The construction materials for Apple Stores, like any other building, are typically sourced from various suppliers and quarries around the world.

Apple, being a global company, may obtain materials from different regions based on factors such as cost, quality, and sustainability.

Common materials in all flagship Apple stores are stone, wood, glass and steel.

It is native to eastern and central North America and is known for its strength, durability, and attractive appearance. White oak is commonly used in various applications, including furniture, flooring, cabinetry, and construction.



CATALOGUE OF APPLE MATERIALS



LEATHER



QUARTZ



LIMESTONE



TERRAZZO



MIRROR-POLISHED
STAINLESS STEEL



WHITE OAK

WHITE OAK

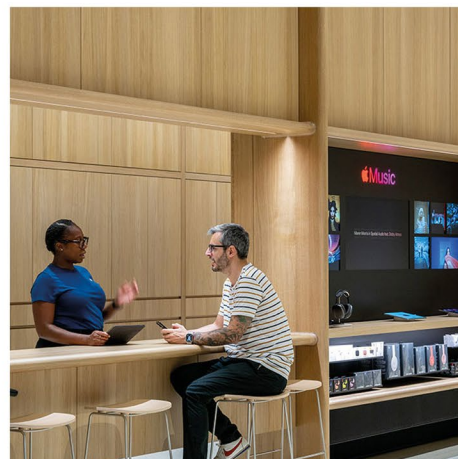
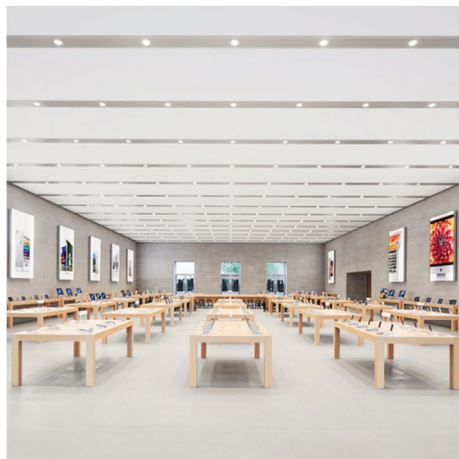
It is native to eastern and central North America and is known for its strength, durability, and attractive appearance.

White oak is commonly used in various applications, including furniture, flooring, cabinetry, and construction.



WHITE OAK

White oak is mainly used in Apple stores for ceiling and for furnishing.



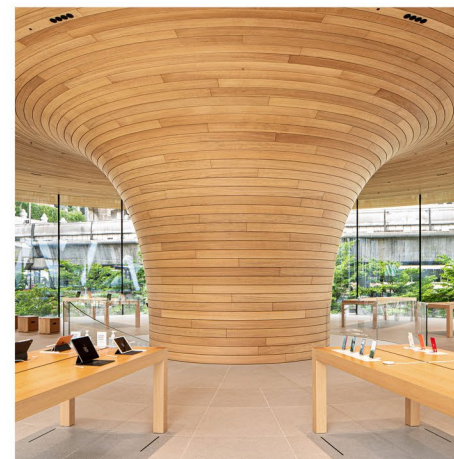
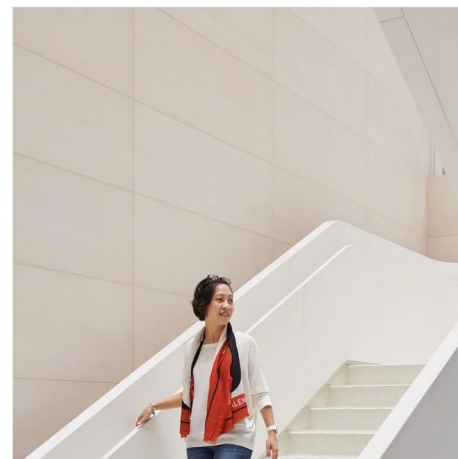
LIMESTONE

Limestone is a versatile and attractive material that is often used in interior design for various applications.

Here are some ways in which limestone is commonly used as an interior material

LIMESTONE

Limestone is mainly used in Apple stores for flooring and as wall cladding.



MIRROR - POLISHED STAINLESS STEEL

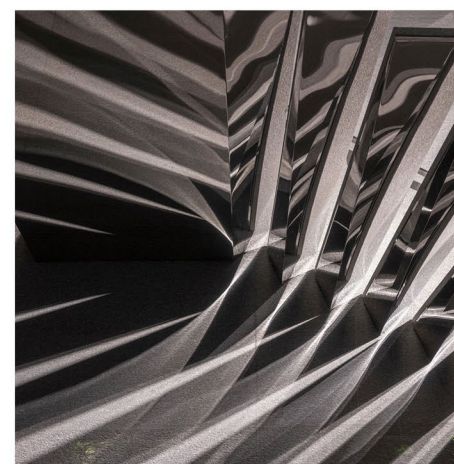
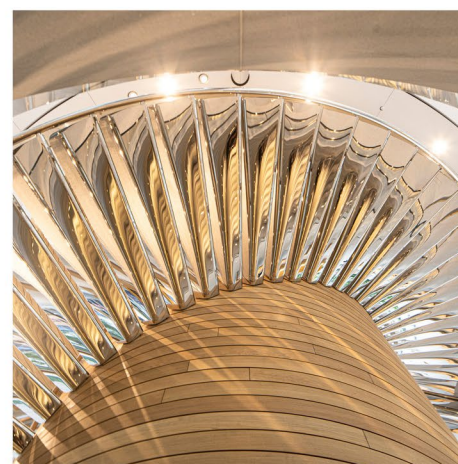
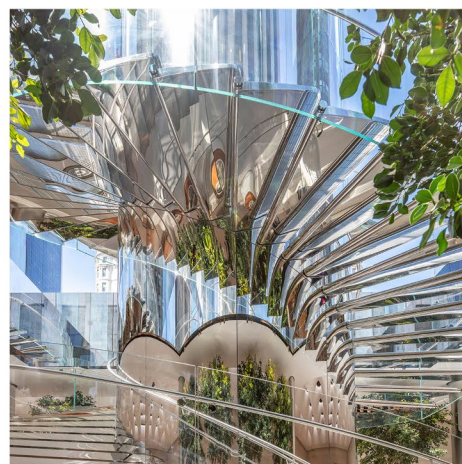
Mirror-polished stainless steel is a finish that involves a highly reflective and smooth surface achieved through a polishing process.

Stainless steel with a mirror-polished finish has become a popular architectural flourish in the latest New Store Design stores. Used first on Apple logo signage and freestanding Video Walls, the finish has also appeared on surfaces ranging from ceilings to window frames and facades.

Mirror-polished stainless steel furthers the goal of glass in dissolving the barrier between indoors and out by reflecting its environment.

MIRROR-POLISHED STAINLESS STEEL

Stainless steel is mainly used in Apple stores for strairs, columns and decorating elements.

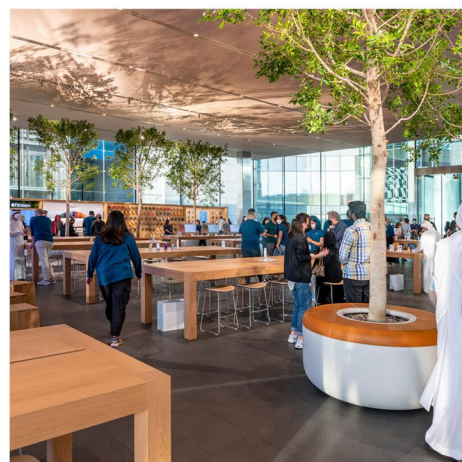


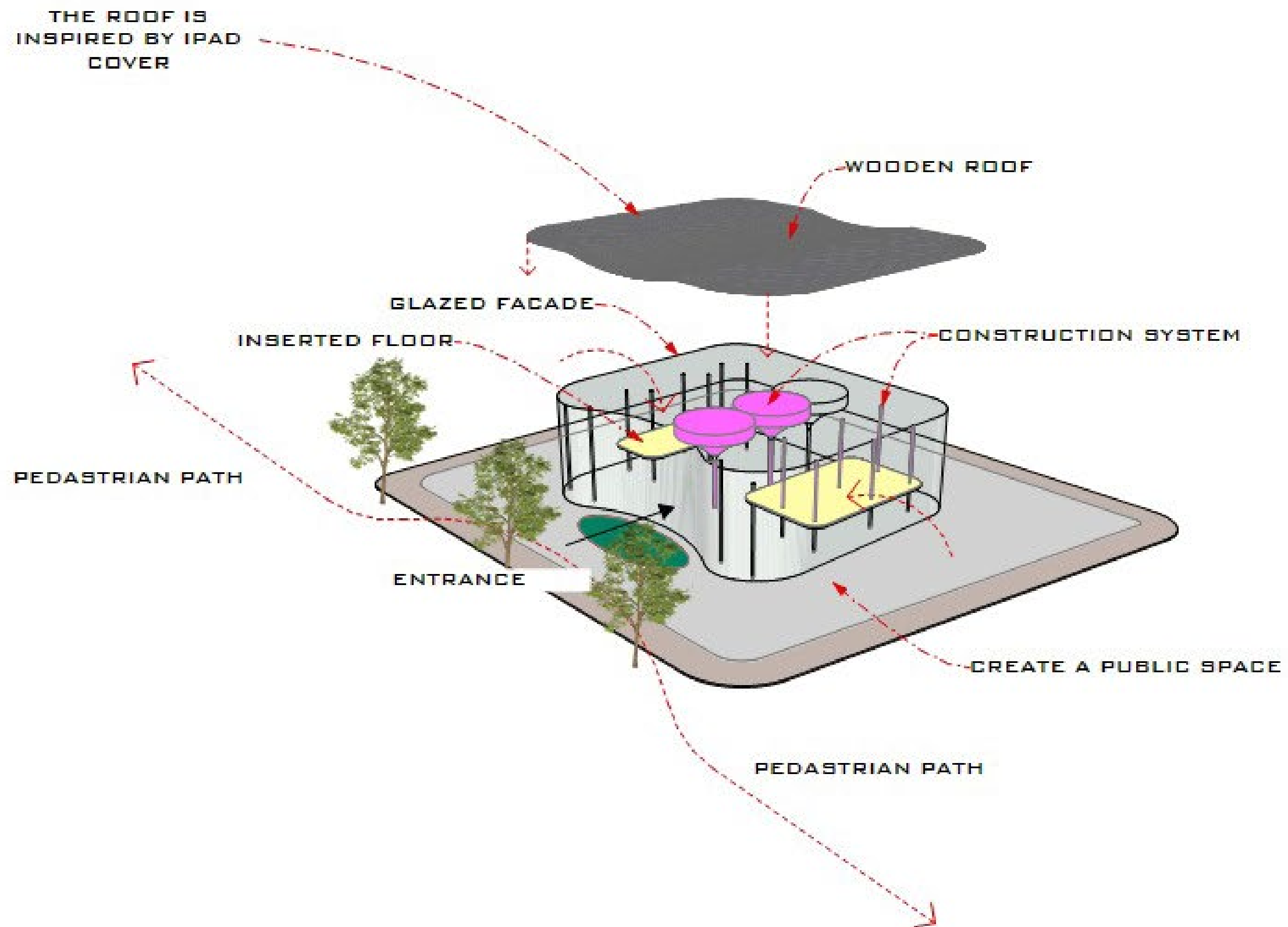
LEATHER

Saddle Brown Leather is found on a variety of fixtures in both Classic Stores and New Store Design stores. Apple Watch Studio mats, Trays, Genius Grove planters,

Forum Seats, and Boardroom furniture all commonly include Saddle Brown Leather elements.

LEATHER





CONCEPT

MAIN IDEAS

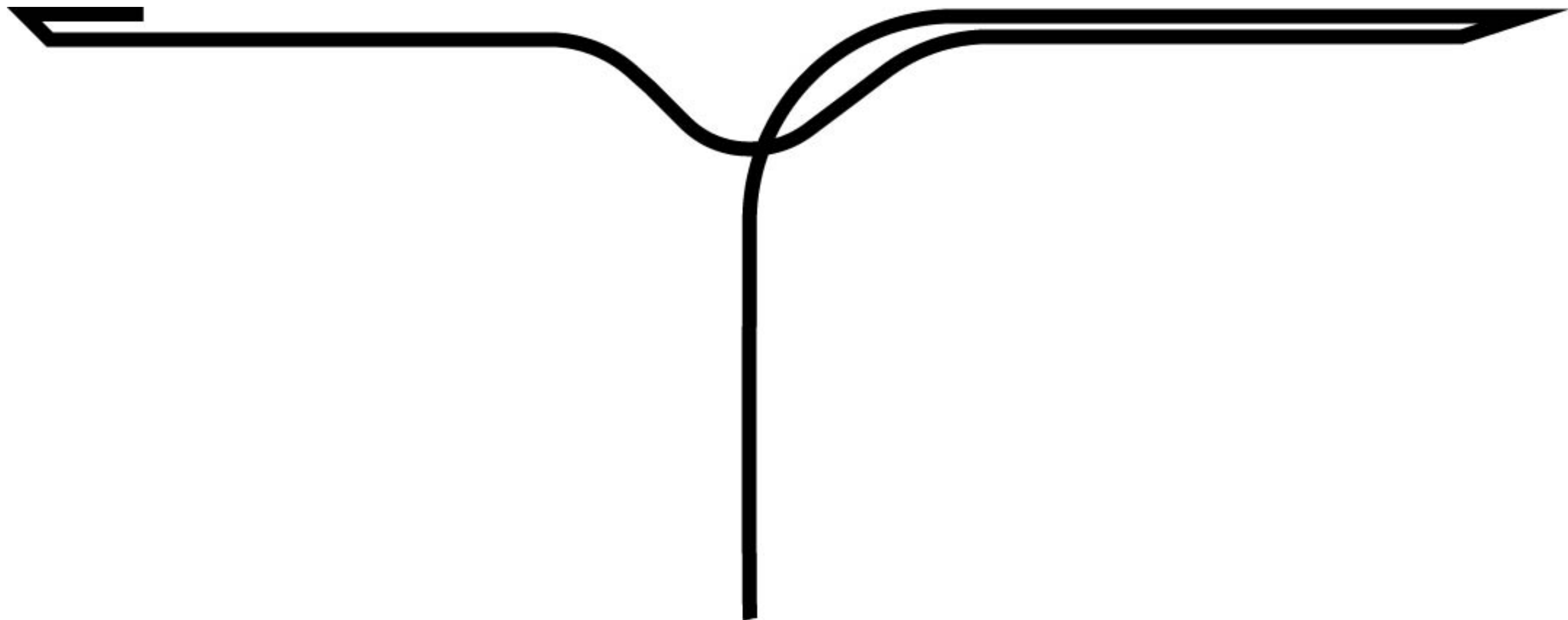
- building as an apple product
- minimalist design
- transparency
- one big space



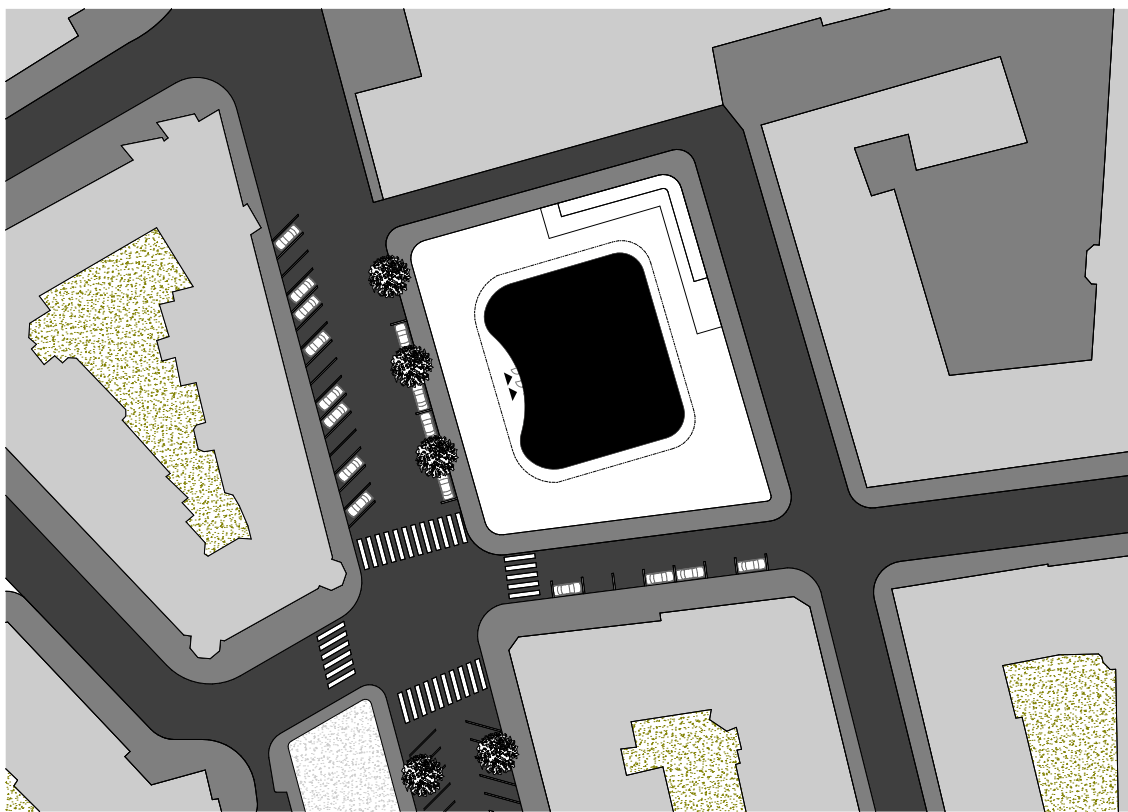
I designed the flagship store on Pařížská Street next to the InterContinental Hotel. The site has a square footprint and there is an existing underground car park underneath the site. For the design, I was inspired by Pařížská Street and its transparency of high-end storefronts. For my project, I occupied a part of the underground car park for technical and sanitary use.

The design concept is based on the transparency of the ground floor, where visitors and passers-by can see through the entire store. In addition, floors resembling levitating balconies were inserted for the purpose of offices for the staff and for the forum. These balconies are supported by columns and steel ropes.

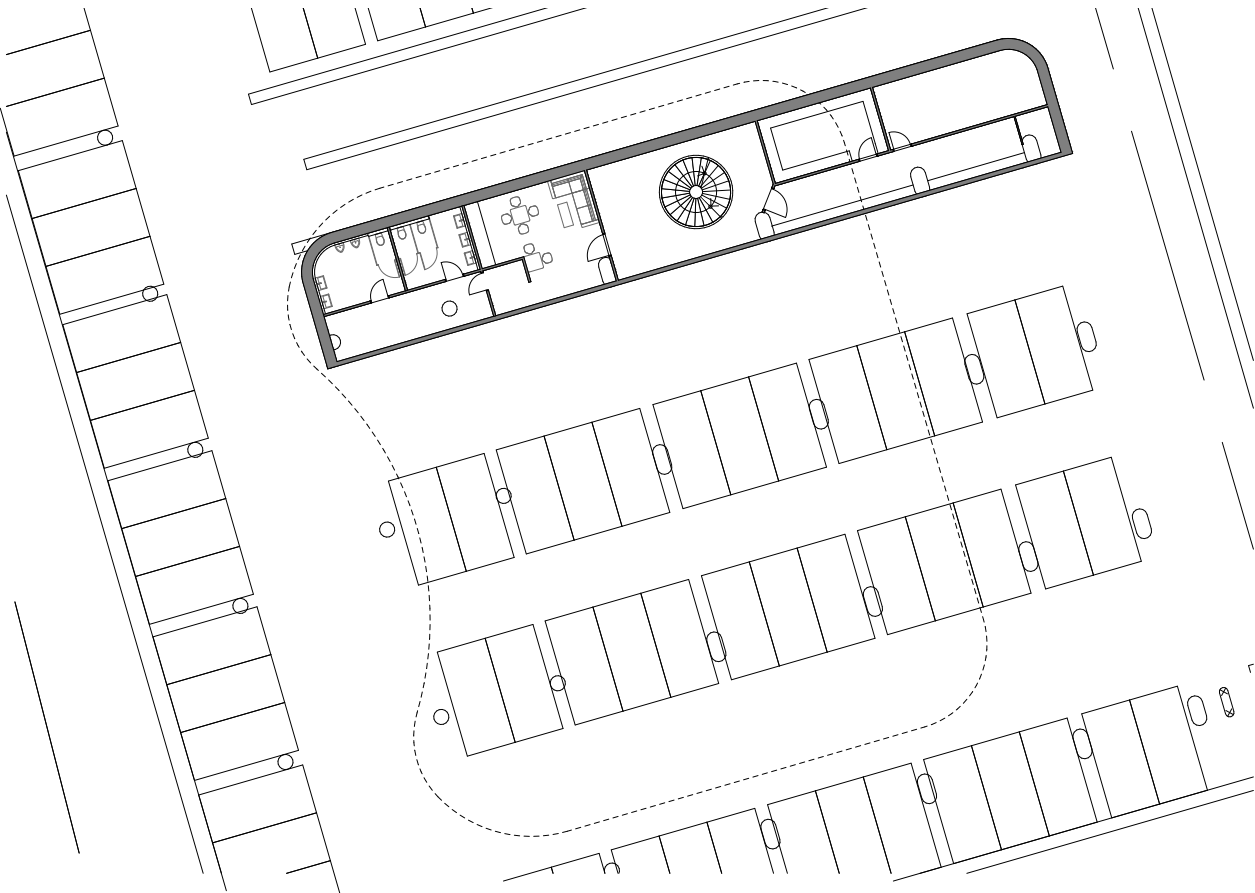
The entire structural system is based on columns that support the roof and balconies. The roof is made of trusses. The middle columns are also made of wood and have the shape of a tree crown. The shape of the roof was inspired by the cover on the Ipad, where the cover is made of three parts and the roof of the shop follows these parts and the shape of the cover.



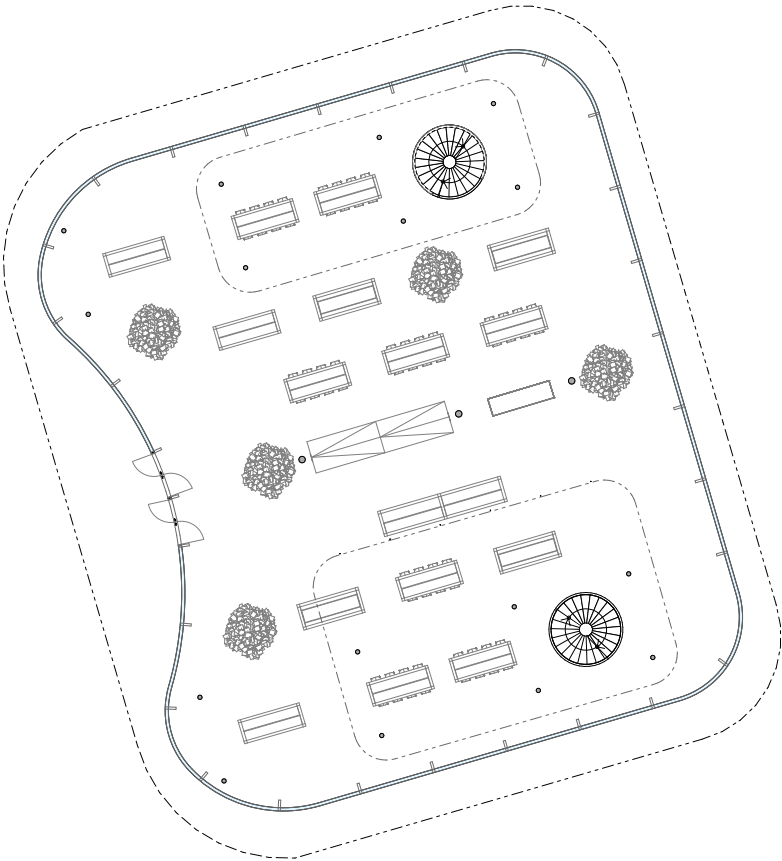
DESIGN



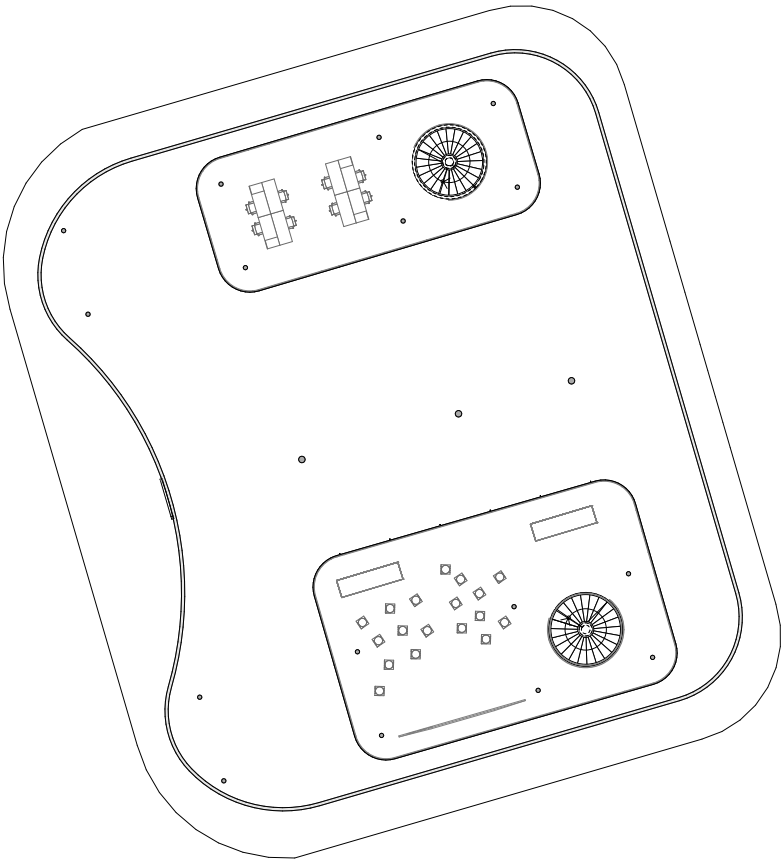
situation



-1. underground

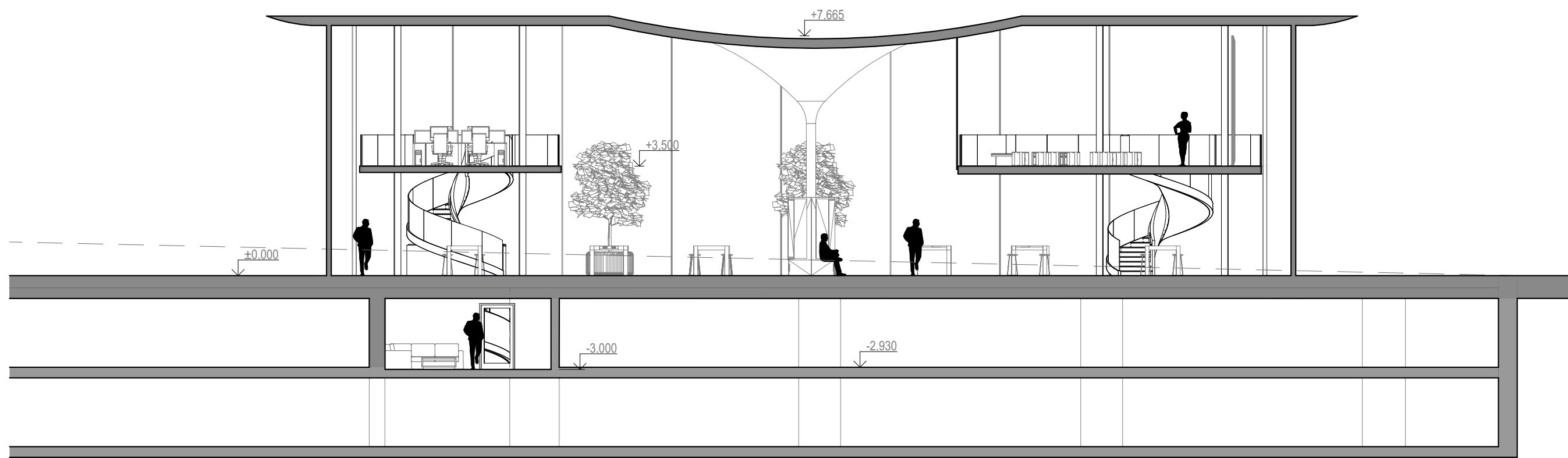


1. ground floor

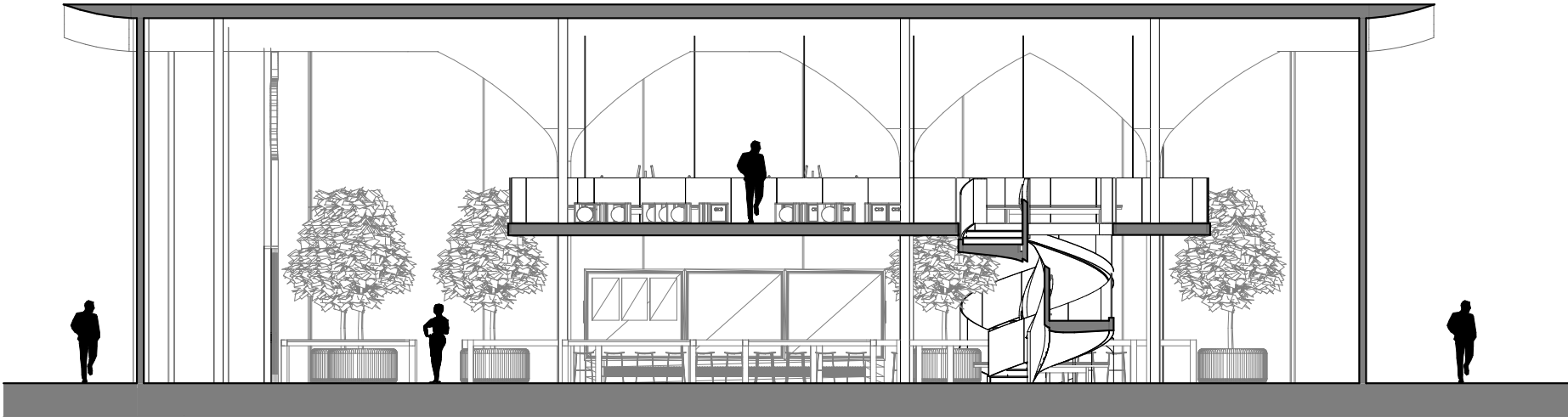


2. first floor

longitudinal section



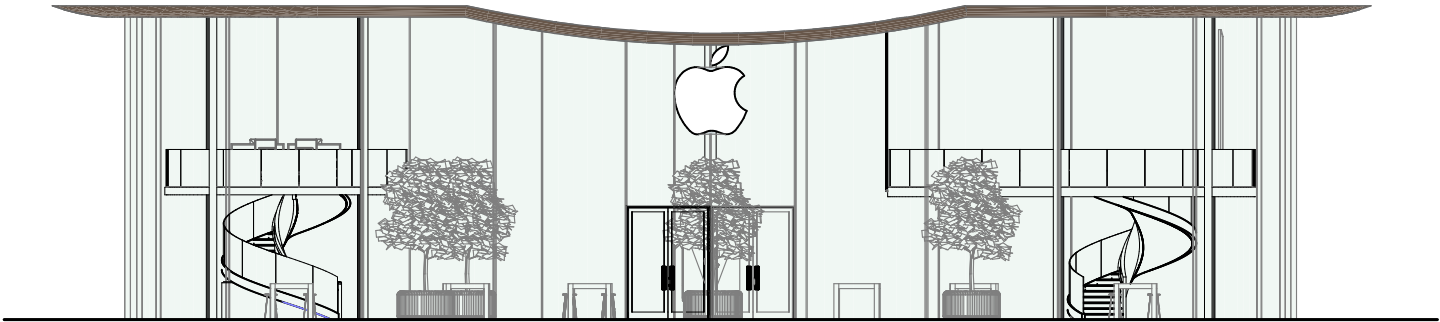
cross section



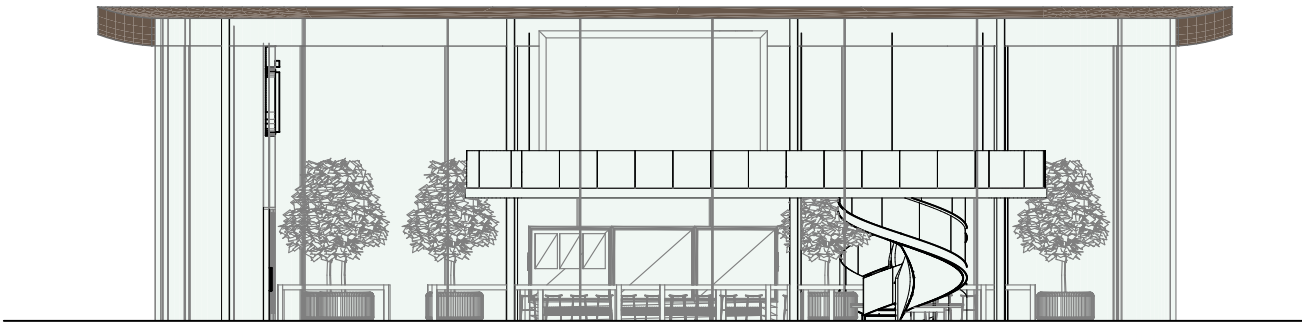
north elevation



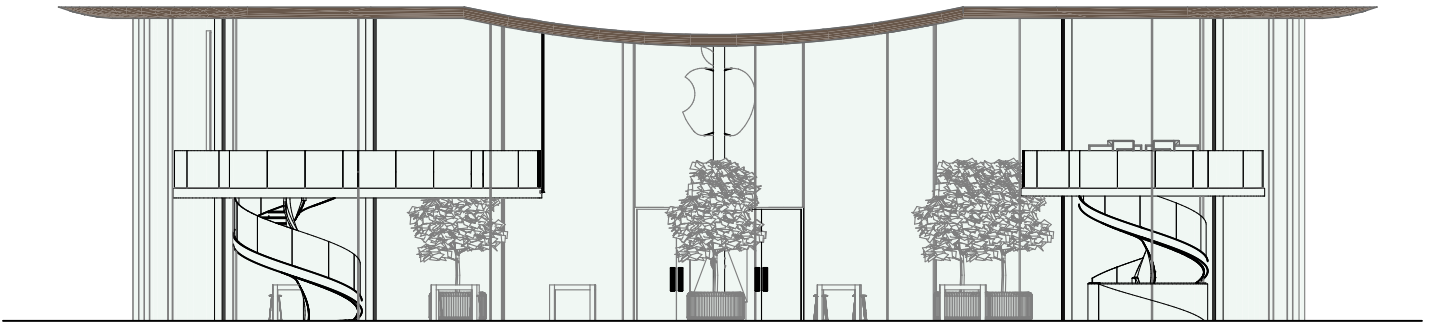
east elevation

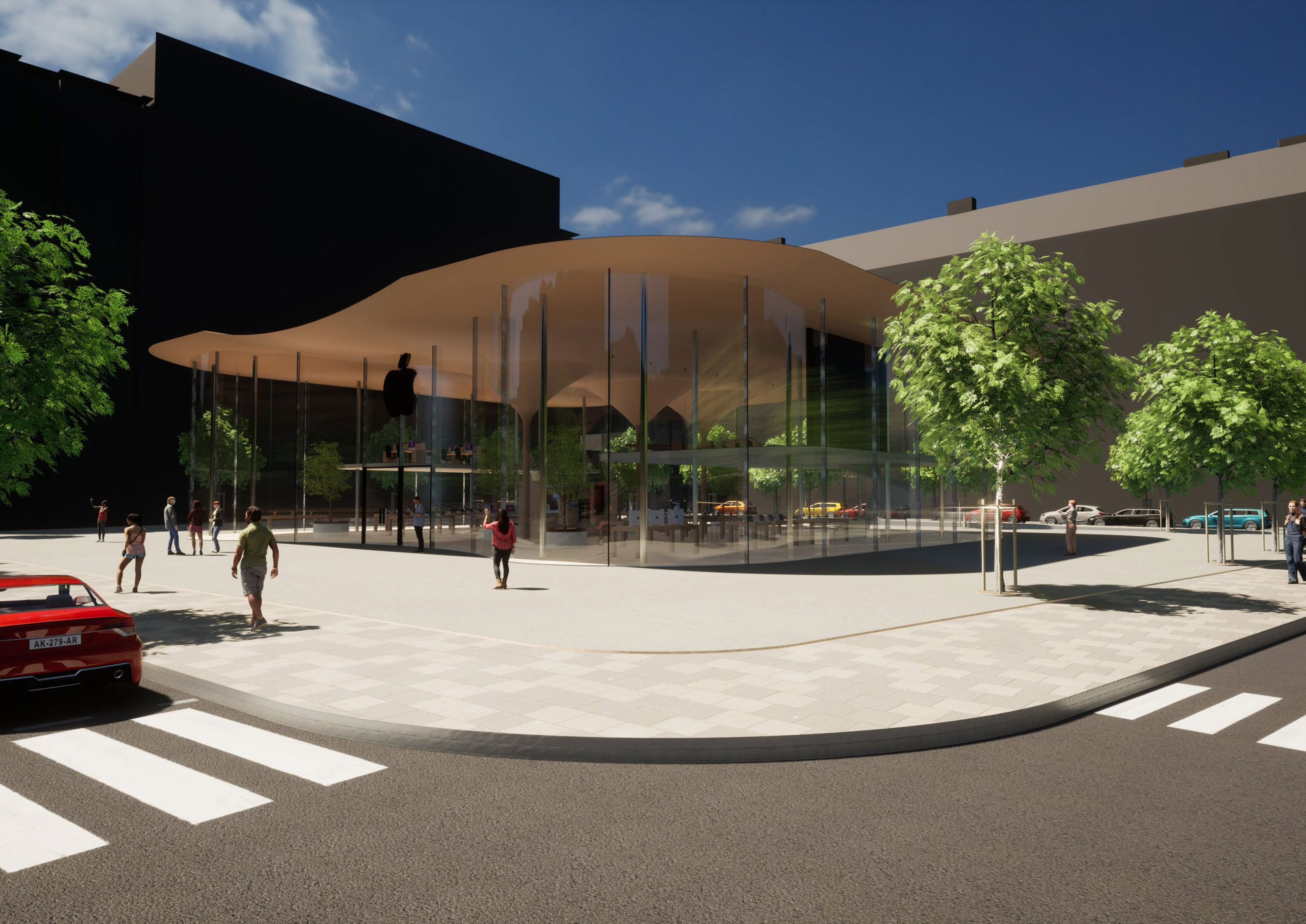


south elevation



west elevation



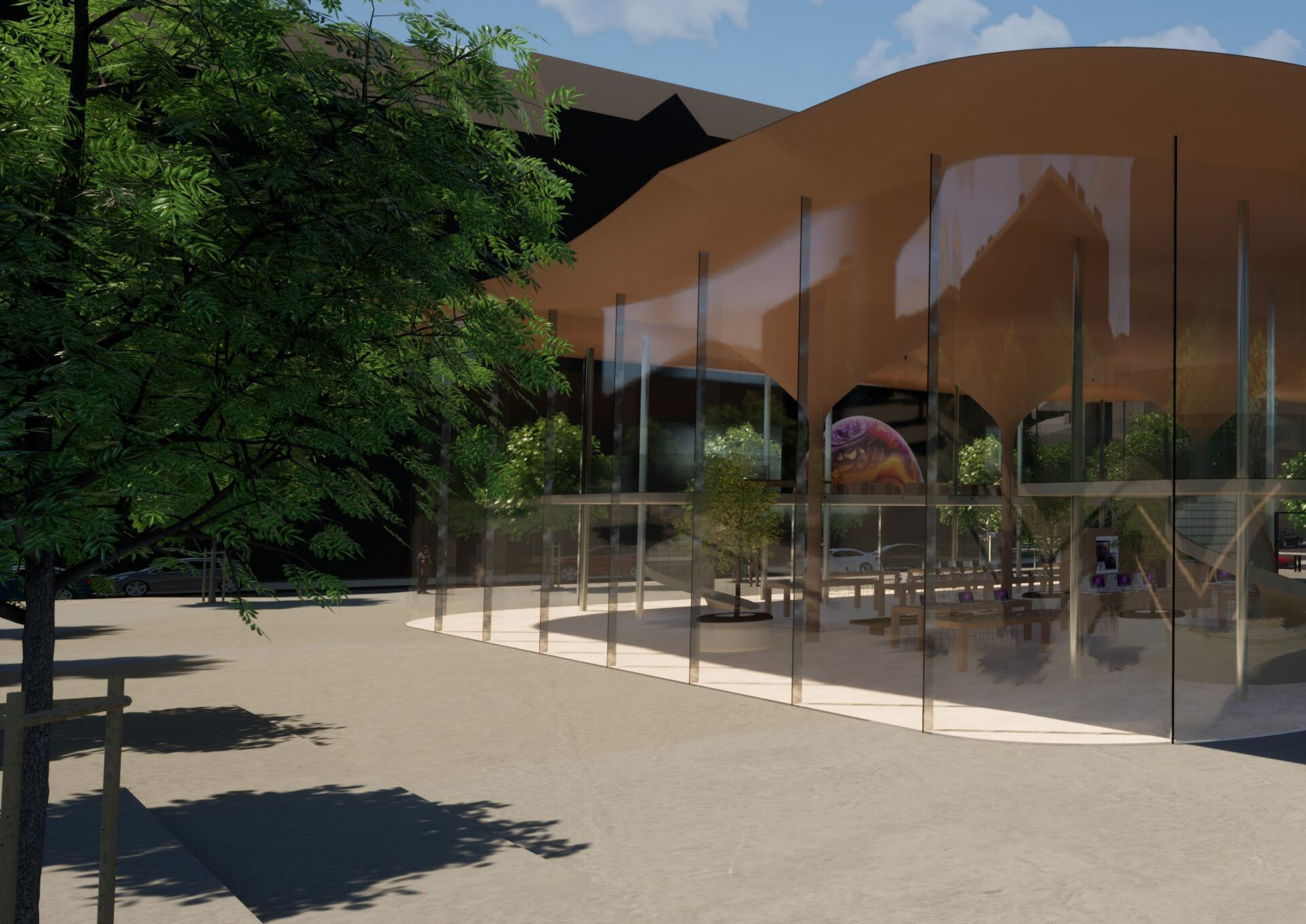


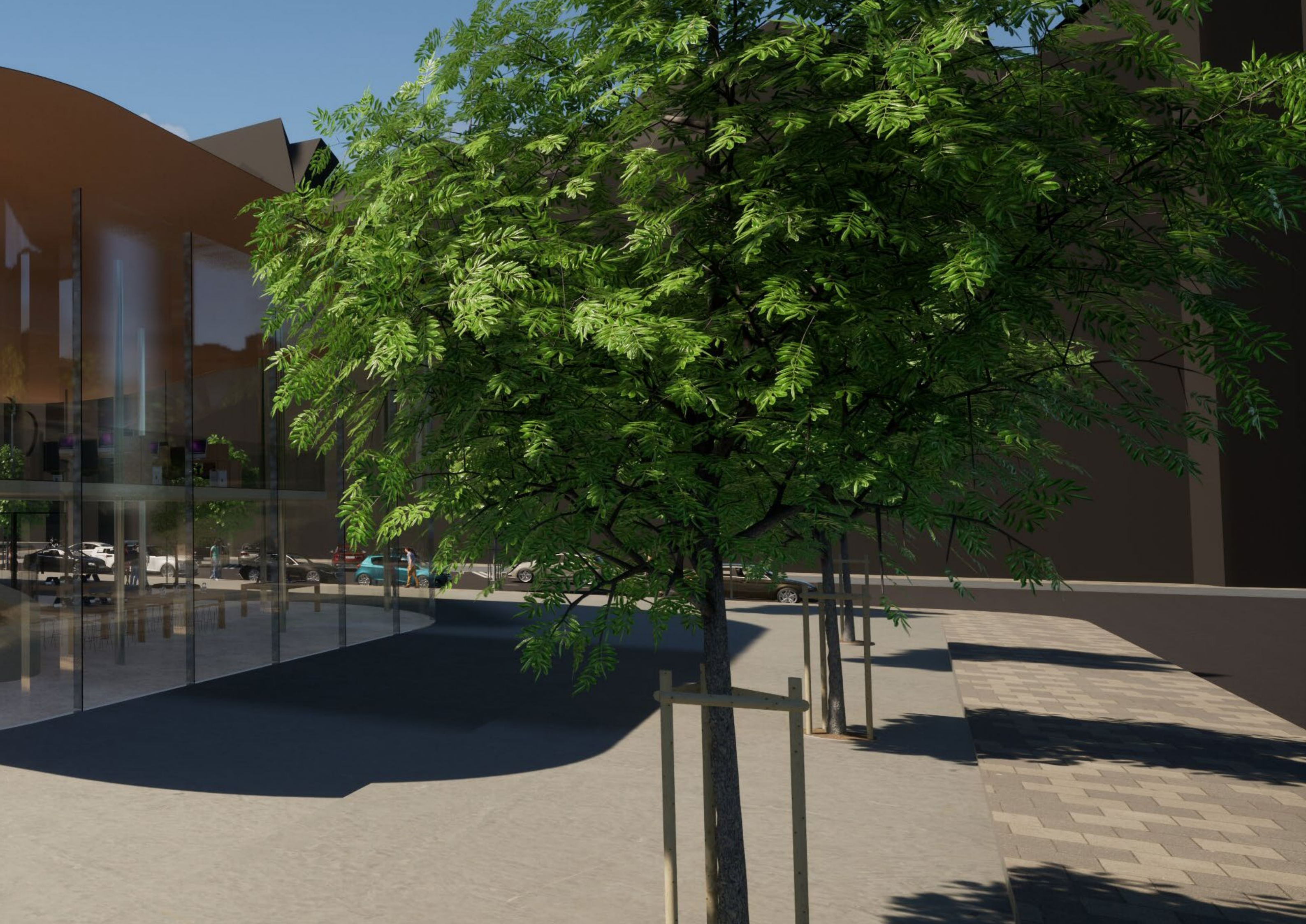














Achten & Pavlíček & Sýsová
ATVZ - ZS 2023/2024