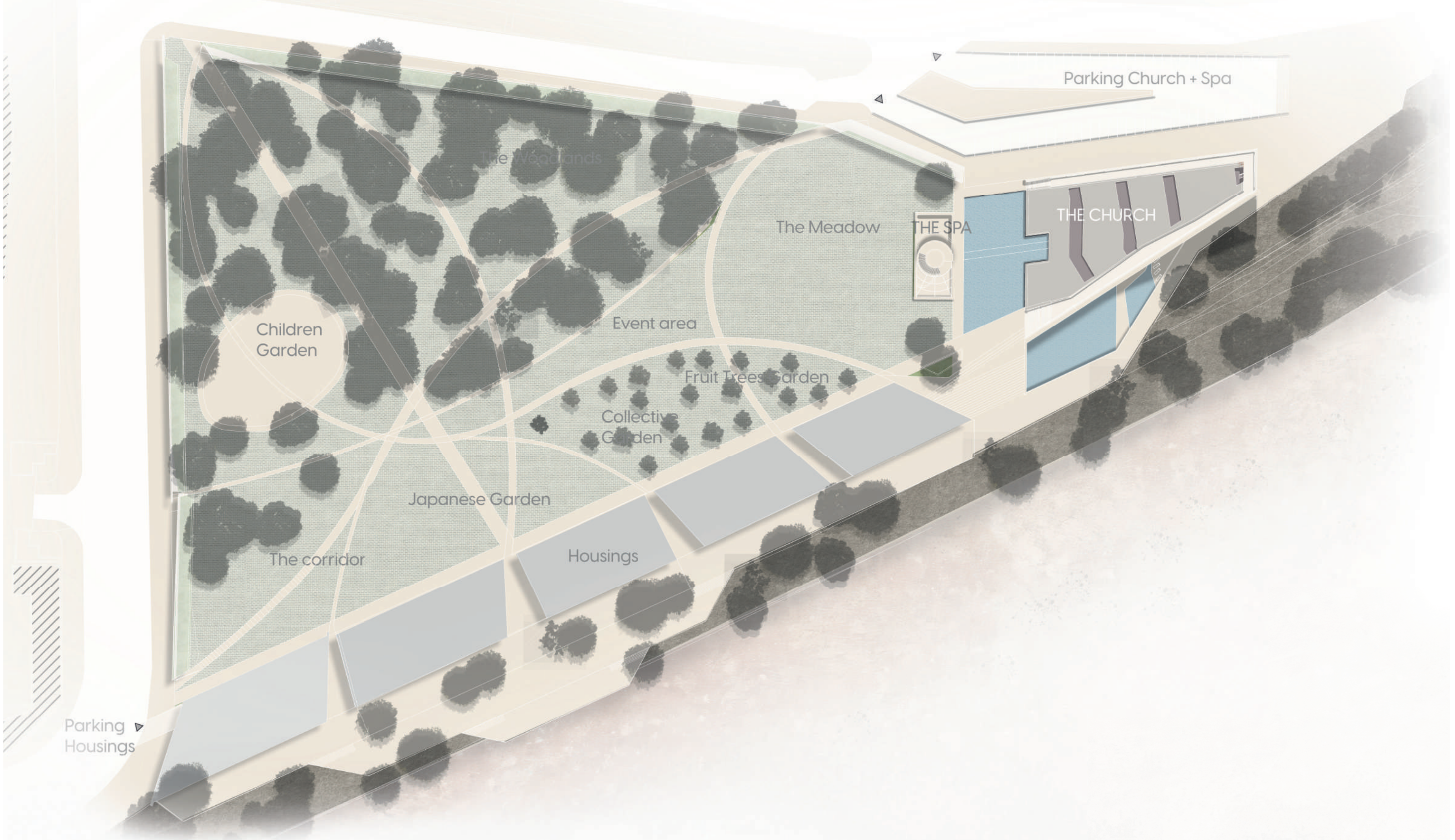


HOLY WATER - The Fin of of the Vltava

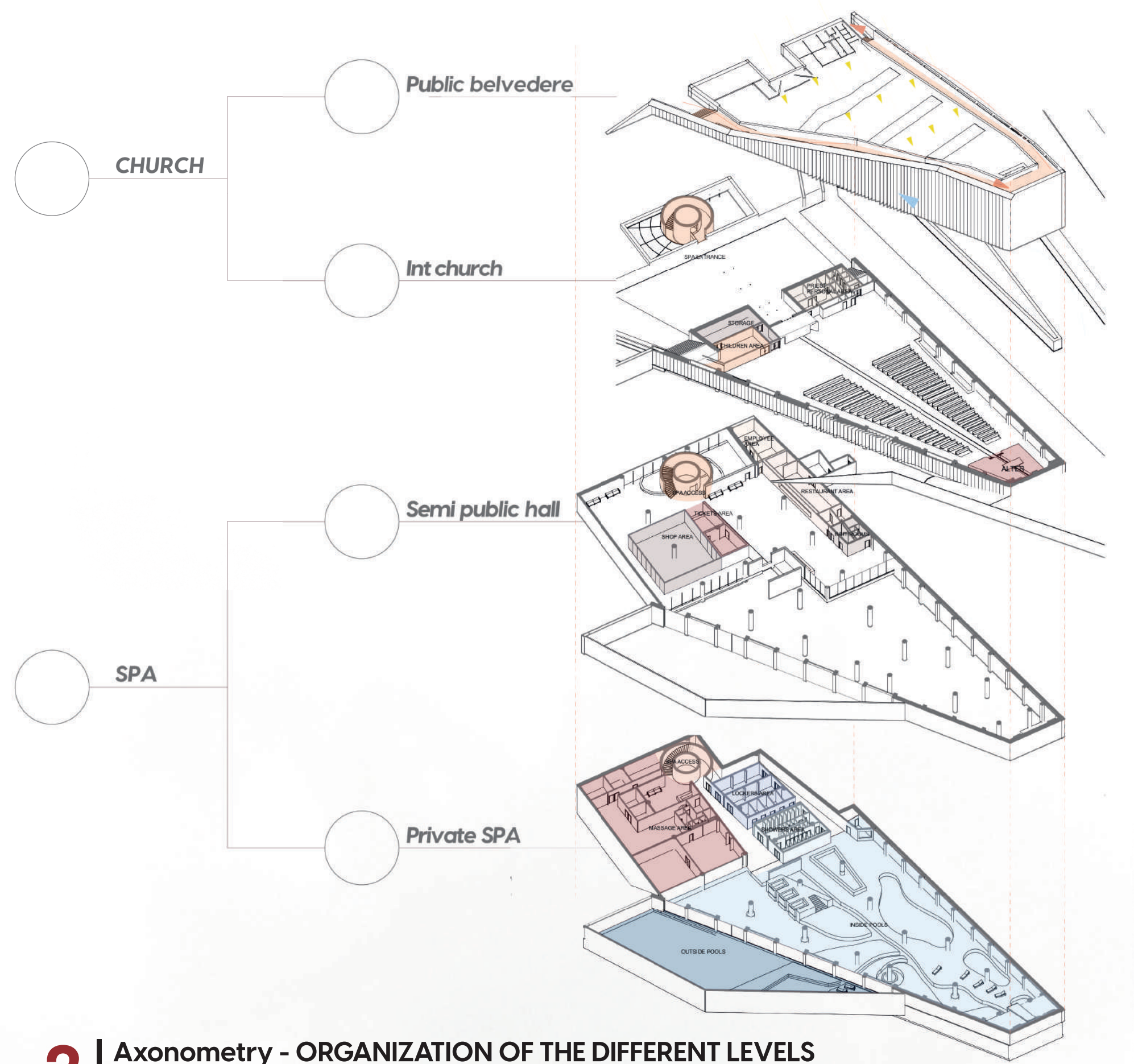
Awen MOOTOOSAMY - KRATKY - MARQUES STUDIO - Church and spa - 2023 - 2024



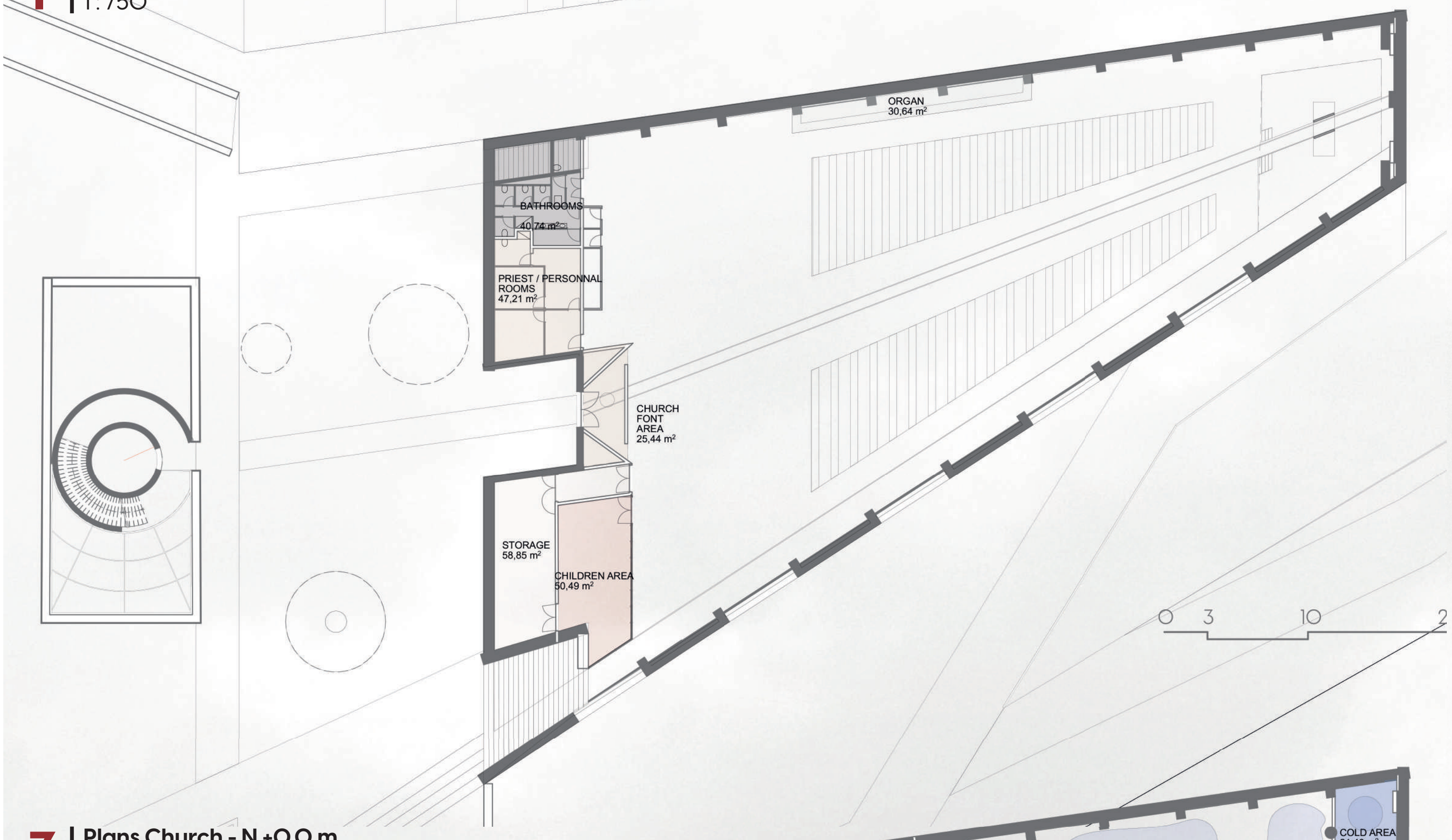
The park is like an oasis, protected on all sides by thick walls and hidden from the rest of Prague 7. Inside, housings face the water, linked by a promenade on stilts over the river shore. At the tip of the park stands proudly the Prague Fin, offering a magnificent rooftop view of the rest of the city. On the square is a water mirror that leads to a church where the atmosphere varies with the wind and the solar cycle thanks to a kinetic façade. It stands above a huge underground spa where the water, large columns and waterfalls give it the air of a Roman baths. These two distinct functions complement in a clever interplay of visual links, linked by the flow of water panels on the sides of the building. It bridges the gap between spirituality and modern world, and becomes a complex entity. From the river, the bronze-coloured metal sheets reflect the building onto the river, revealing itself to boats travelling along the Vltava, a veritable landmark for Prague.



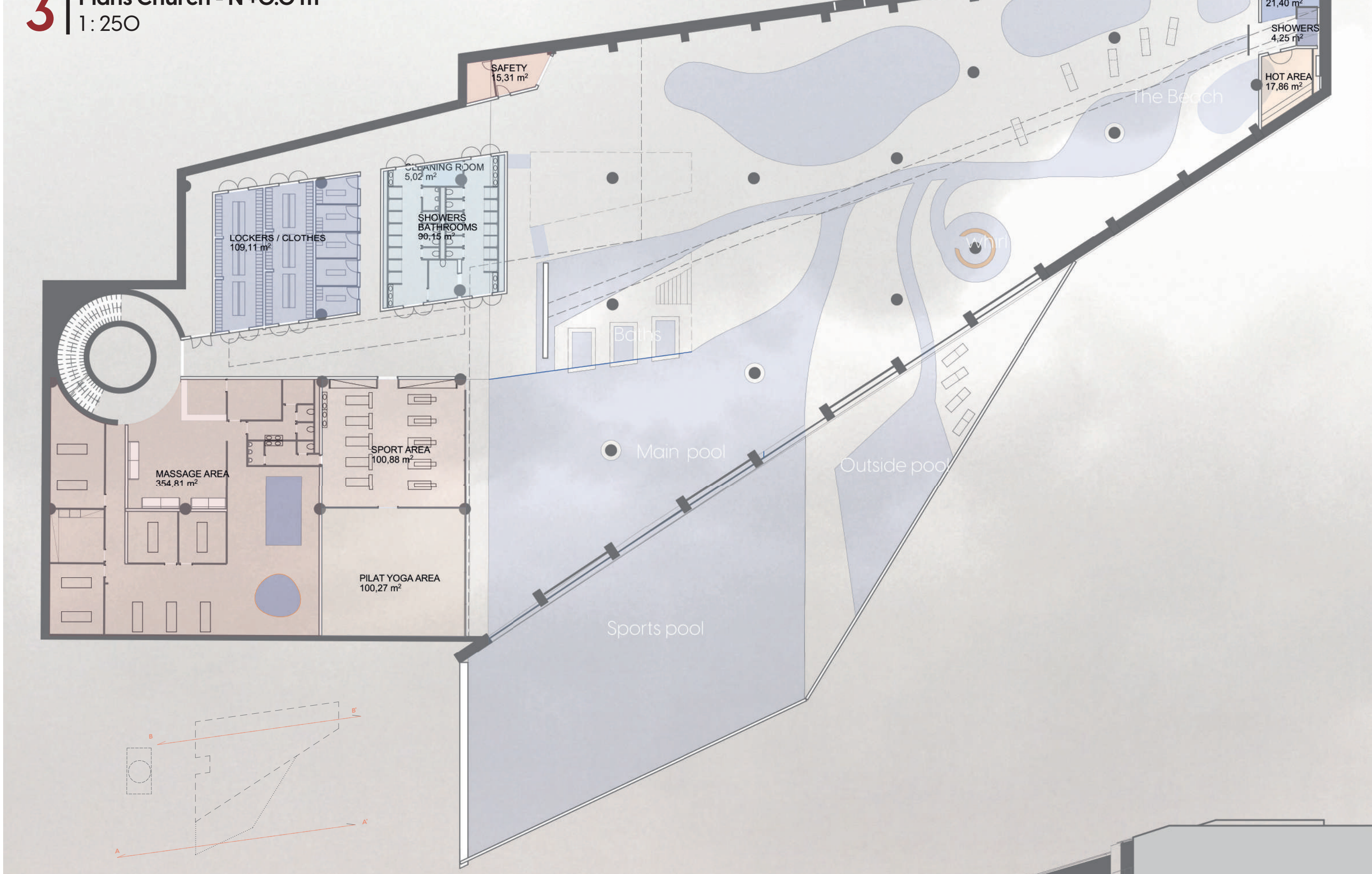
1 Master plan - URBAN STRATEGY
1:750



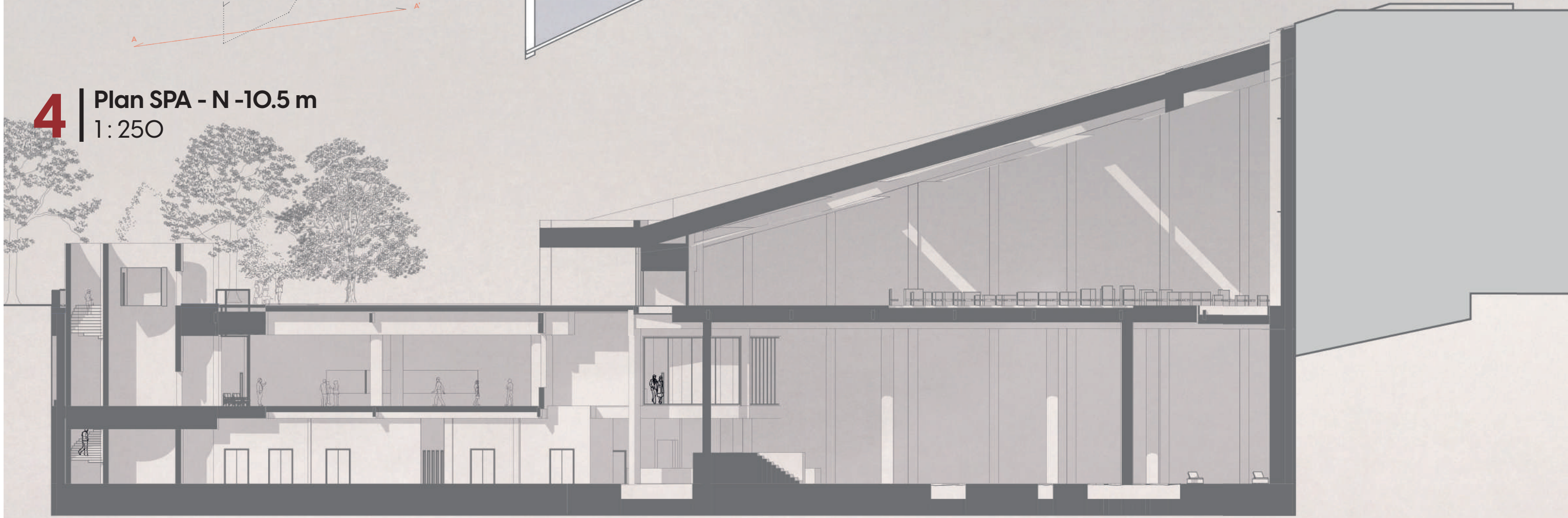
2 Axonometry - ORGANIZATION OF THE DIFFERENT LEVELS
1:750



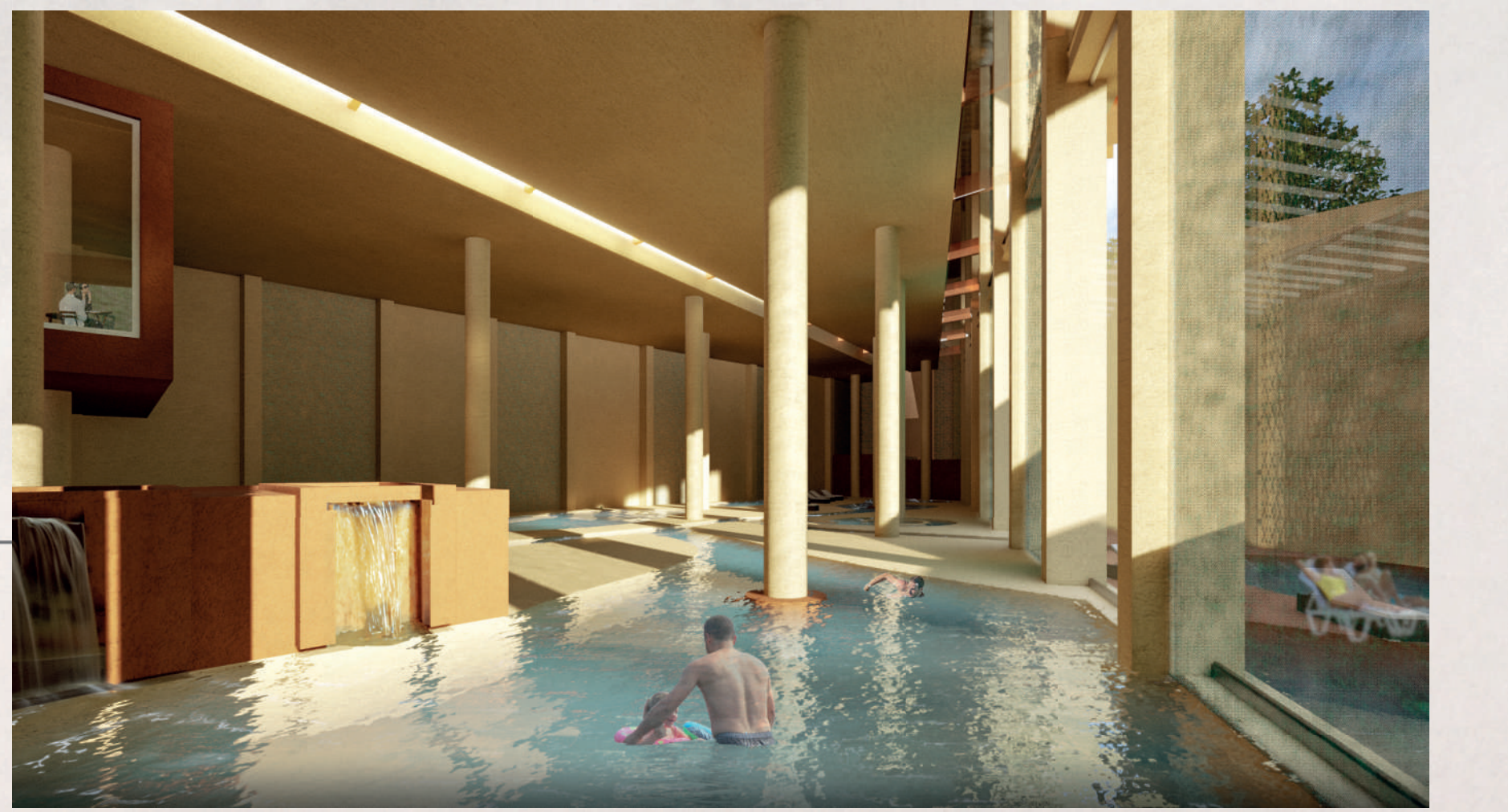
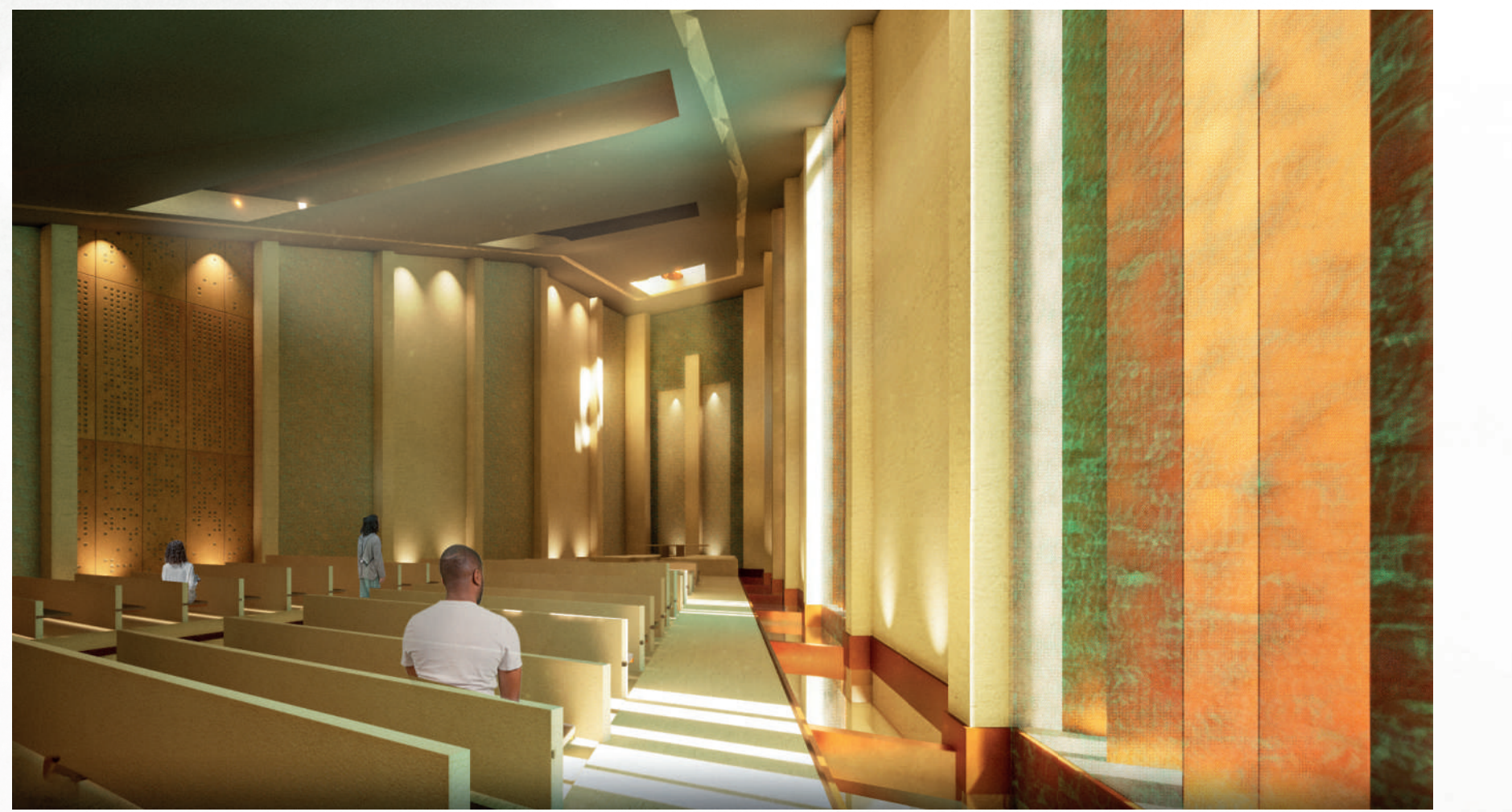
3 Plans Church - N +0.0 m
1:250



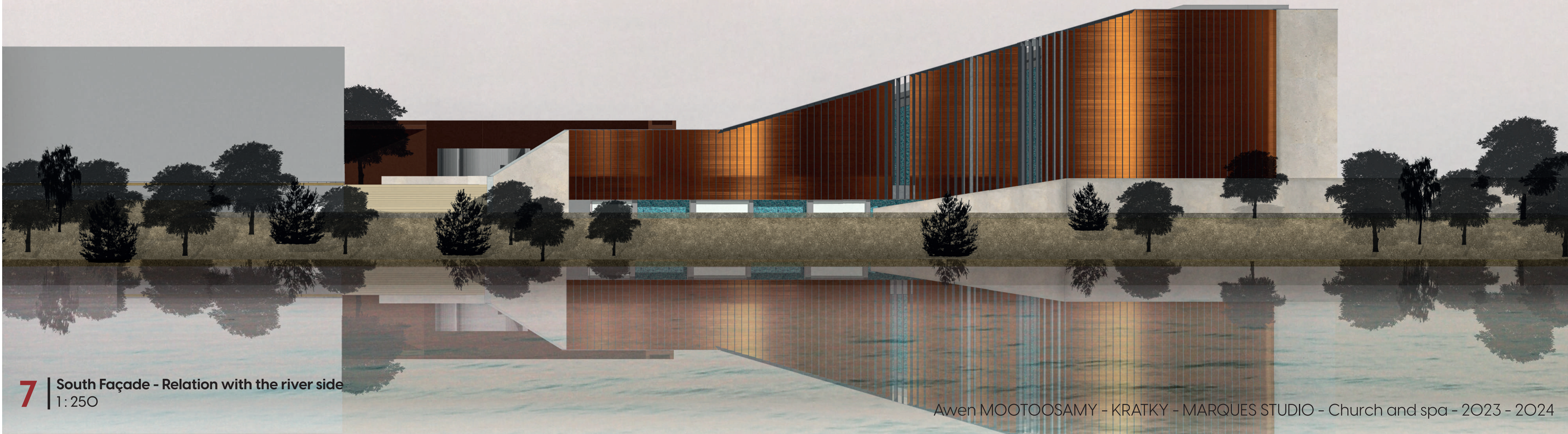
4 Plan SPA - N -10.5 m
1:250



6 Longitudinal section - ACCESS AND LINKS BETWEEN LEVELS
1:250



5 3D Vizualizations - 1. Exterior - 2.Church - 3.SPA
Human sight views



7 South Façade - Relation with the river side
1:250

Awen MOOTOOSAMY - KRATKY - MARQUES STUDIO - Church and spa - 2023 - 2024