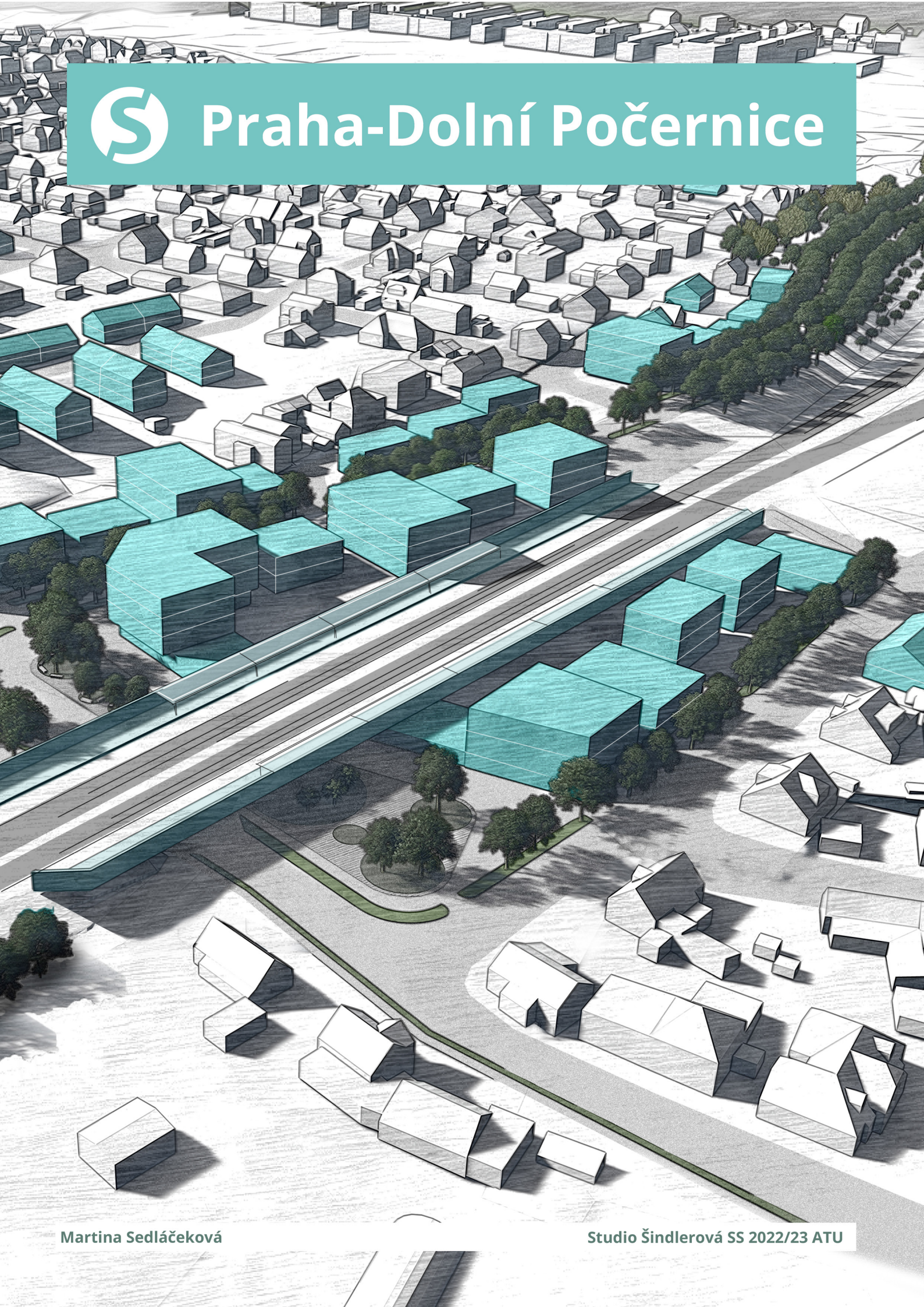




# Praha-Dolní Počernice









## Description

### Prague - Dolní Počernice

An area of the capital city of Prague with its own characteristics, rural structure and areas of greenery through which the railway line passes. There is one existing station on the line today and another one is planned.

One of the main concepts of the project is the merging of these two stations into one and its location near the intersection of Českobrodská and Národních Hrdinů streets. At the same time, a small local center with services, administration and a small square for all age groups is being created in the area.

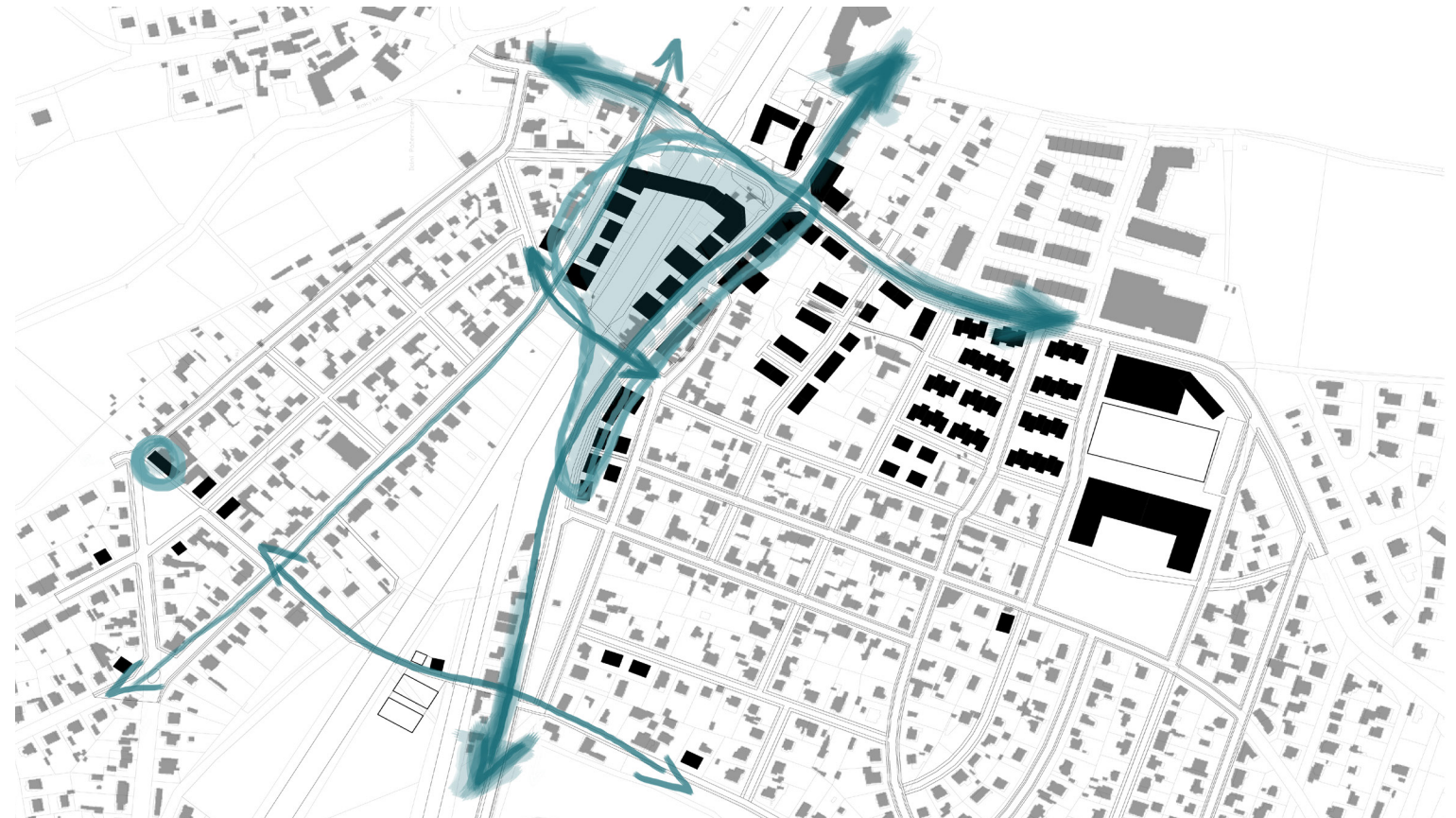
Unstable built-up areas change their use and its intensity, and free areas in the structure are filled with residential districts and civic amenities in the form of educational and sports facilities. A few more residential buildings and parks are being added to the existing structure within small interventions.

The large areas between the individual branches of the tracks are filled by the orchard and areas for sports and recreation. New bicycle paths, pedestrian crossings, underpasses and green lines are also proposed.

Overall, this is a project supporting the integration of the territory, strengthening its importance, attractiveness and possibilities of use.



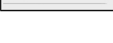


## Concept schemes

...connection, public spaces, greenery concept





# Masterplan



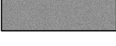
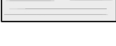

-  designed masses
-  road
-  residential zone
-  pavement
-  greenery
-  railway
-  train station
-  underpass

300m





# Masterplan

-  designed masses
-  road
-  residential zone
-  pavement
-  greenery
-  railway
-  train station
-  underpass



30m



# Masterplan

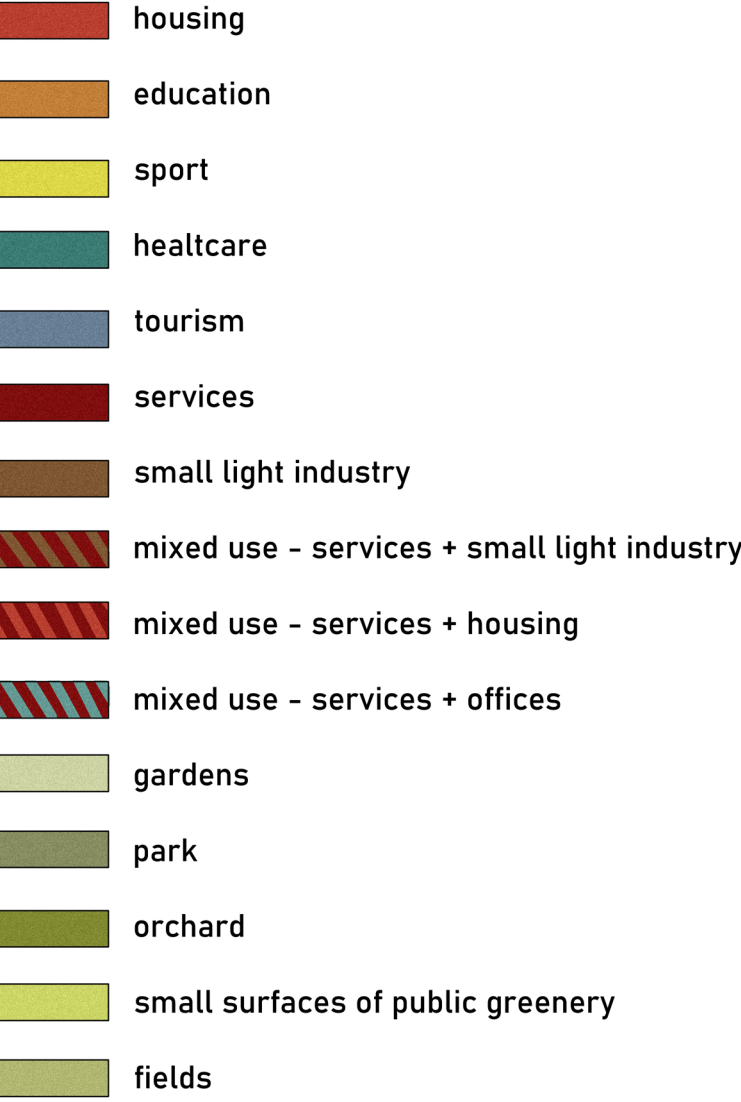
- designed masses
- road
- residential zone
- pavement
- greenery
- railway
- train station
- underpass



30m



# Landuse



300m





# Public spaces

- central public spaces
- main access to the area - Českobrodská
- main access to the area - Národních Hrdinů
- main network of public spaces in the structure
- completing network of public spaces in the structure
- secondary public spaces
- unpaved public spaces
- underpass





# Composition

- 1 floor      3,5 - 4,5 m
- 2 floors      7,0 - 9,0 m
- 3 floors      10,5 - 12,0 m
- 4 floors      14,0 m
- ..... mass under the railway
- dominant

300m

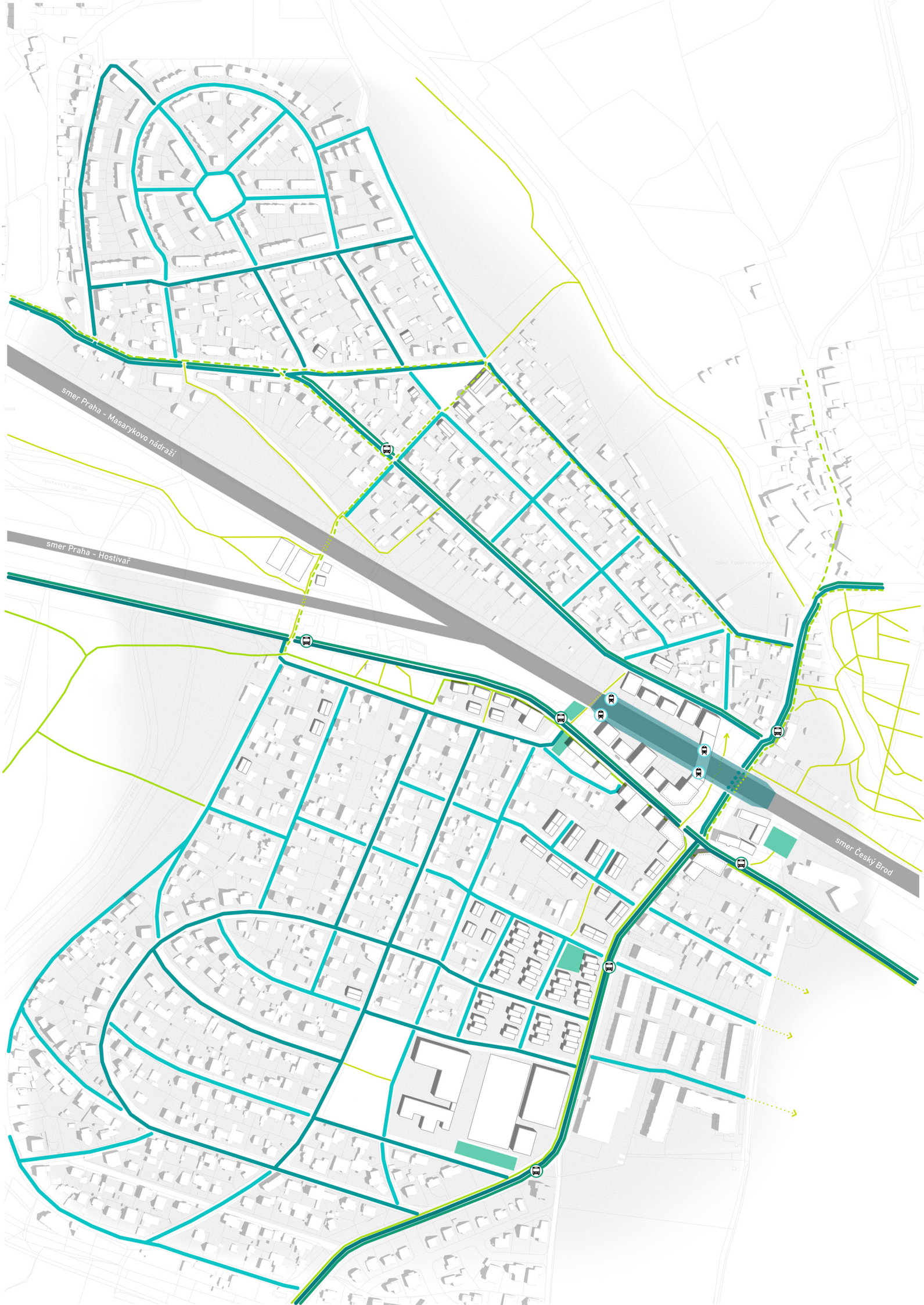




# Transport












- transit transport
- main local roads
- secondary local roads - residential zone
- railway
- train station
- entrance to the train station
- bus line
- bus stop
- bike path
- bike line
- pedestrian line
- car park

300m





# Greenery composition

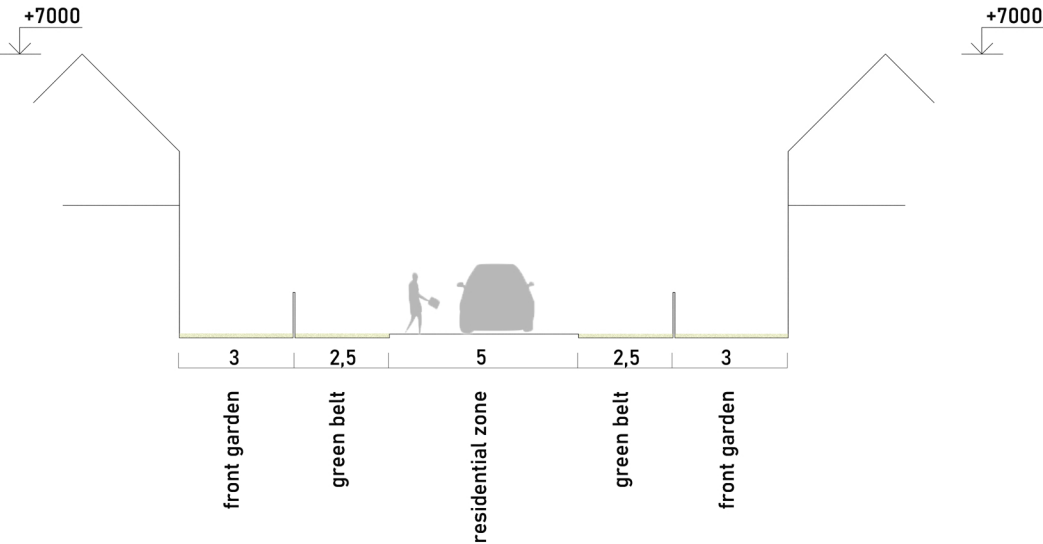
-  parks
-  orchard
-  small surfaces of public greenery
-  gardens
-  fields
-  private greenery
-  sport greenery
-  orchard trees
-  alley trees
-  vegetation buffer
-  Hostavický stream

300m

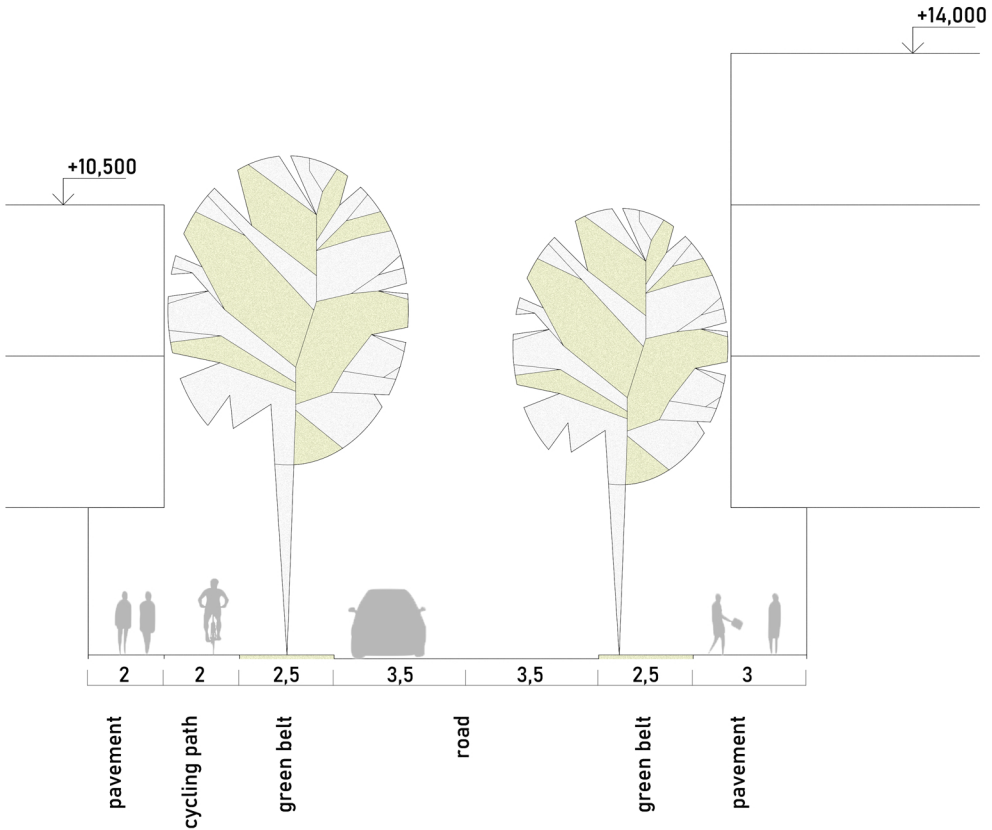




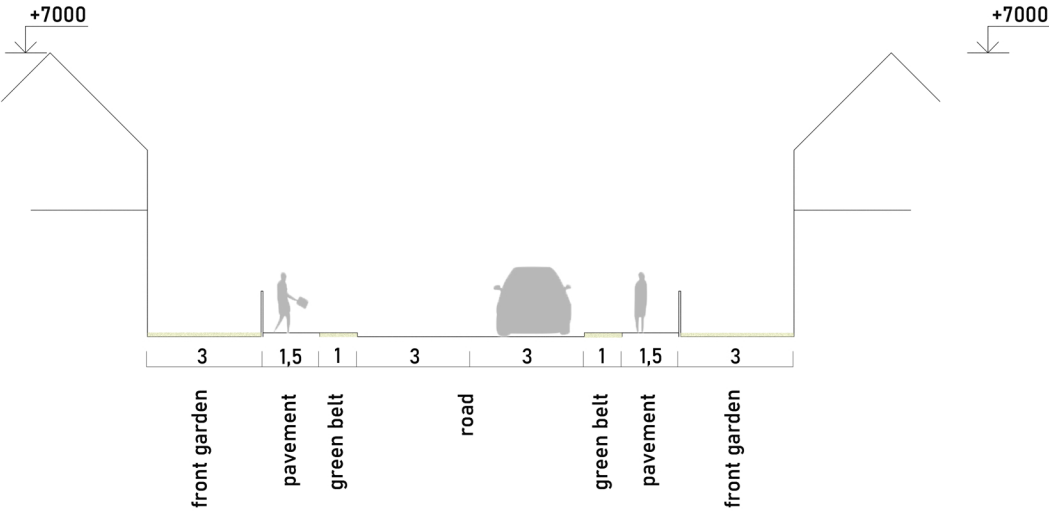
CUT A-A



CUT C-C



CUT B-B



CUT D-D





# Detail

-  designed masses
-  parterre
-  road
-  pavement, square - tiles
-  square - wooden paving
-  square - tartan ( bike parking, playground )
-  bike path
-  bike line
-  car park
-  vertical communication
-  reserved place for exterior sitting
-  entrance
-  service entrance



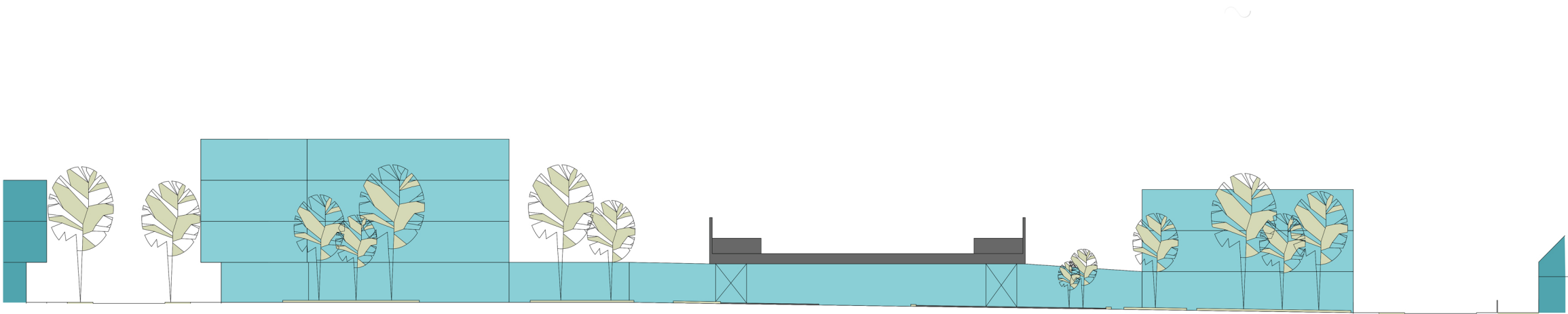
30m



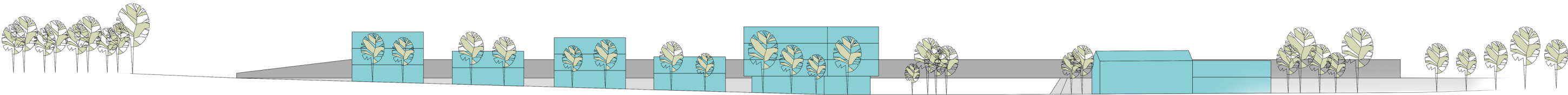




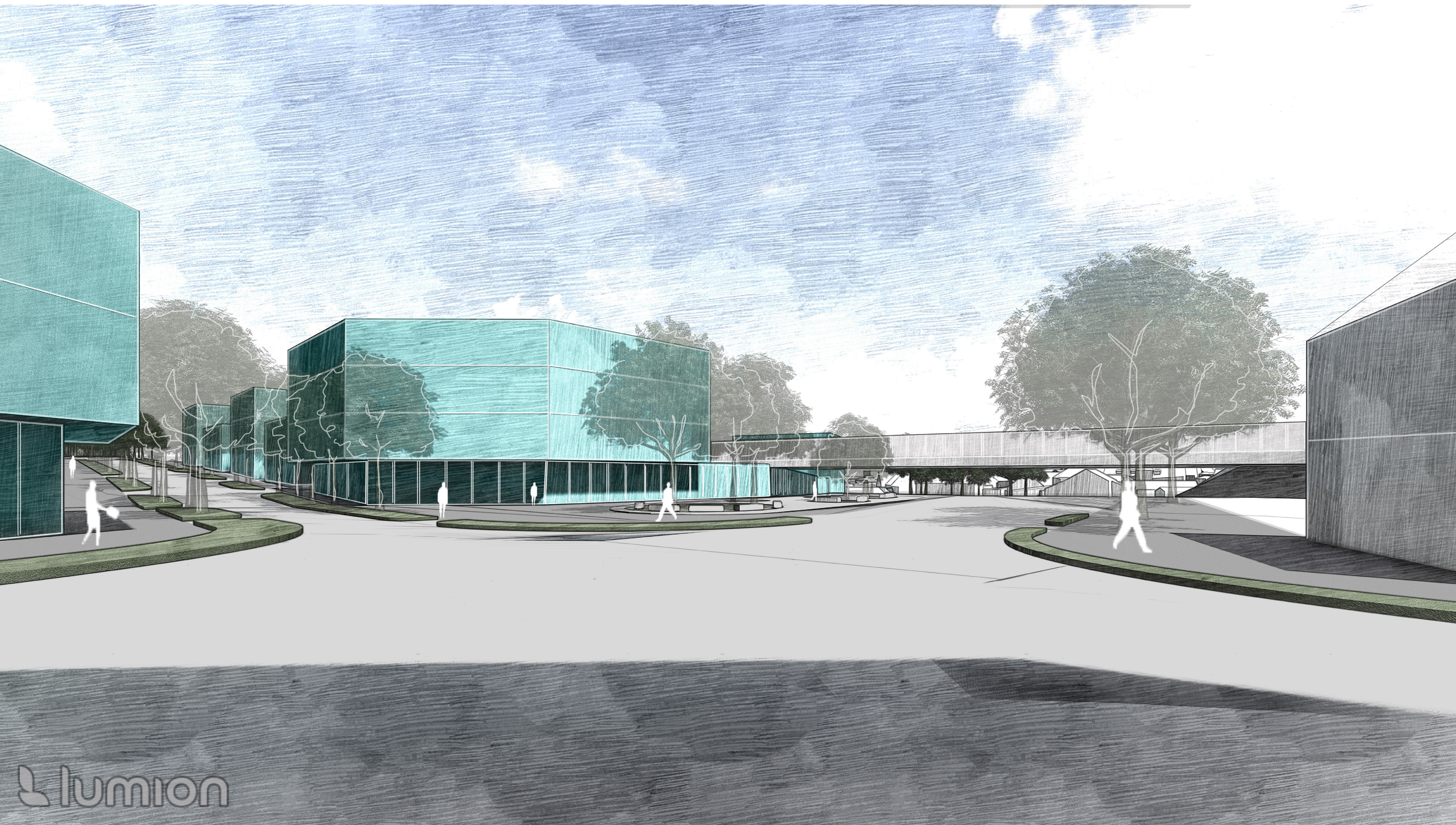
CUT A-A



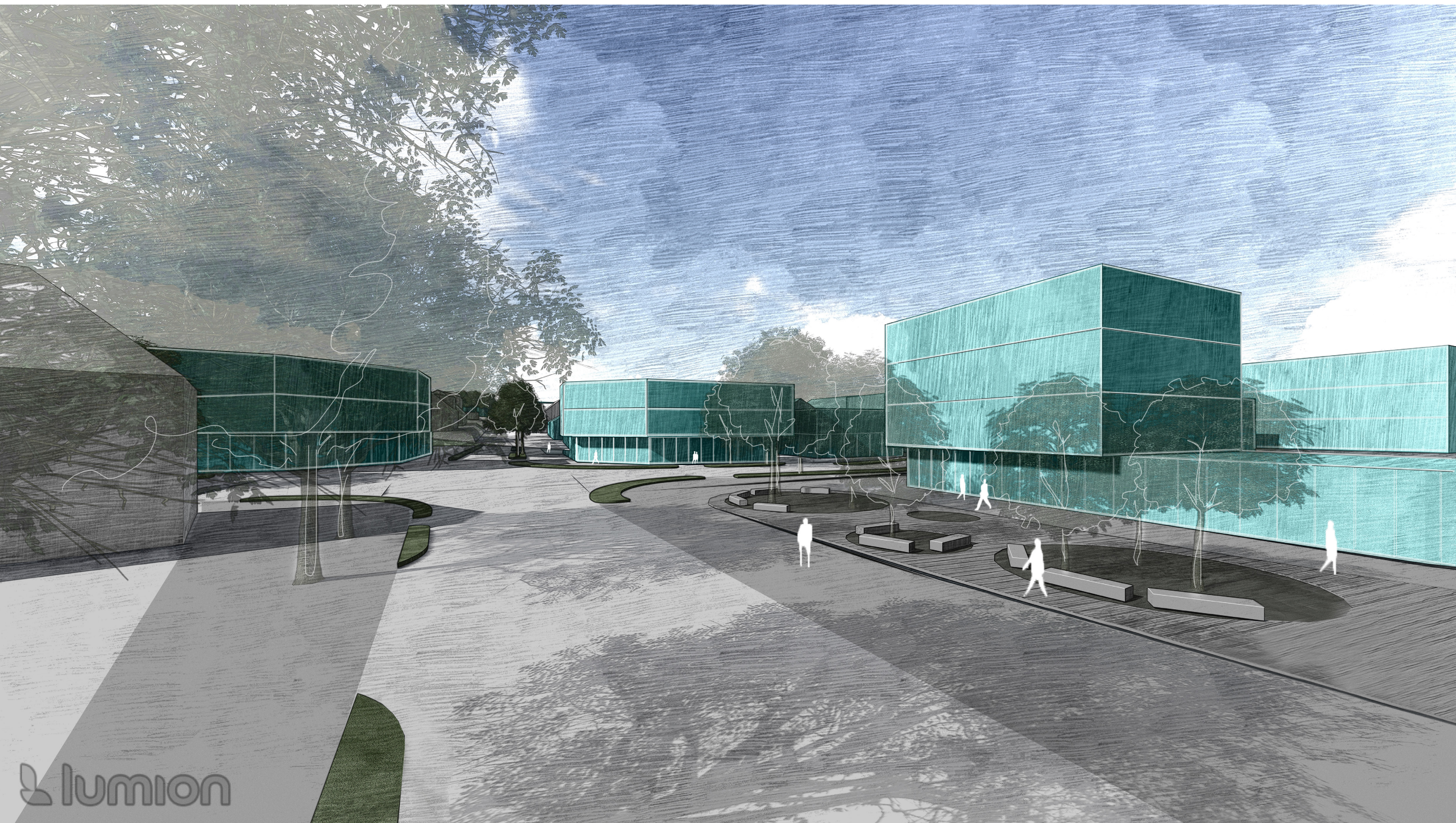
VIEW B-B



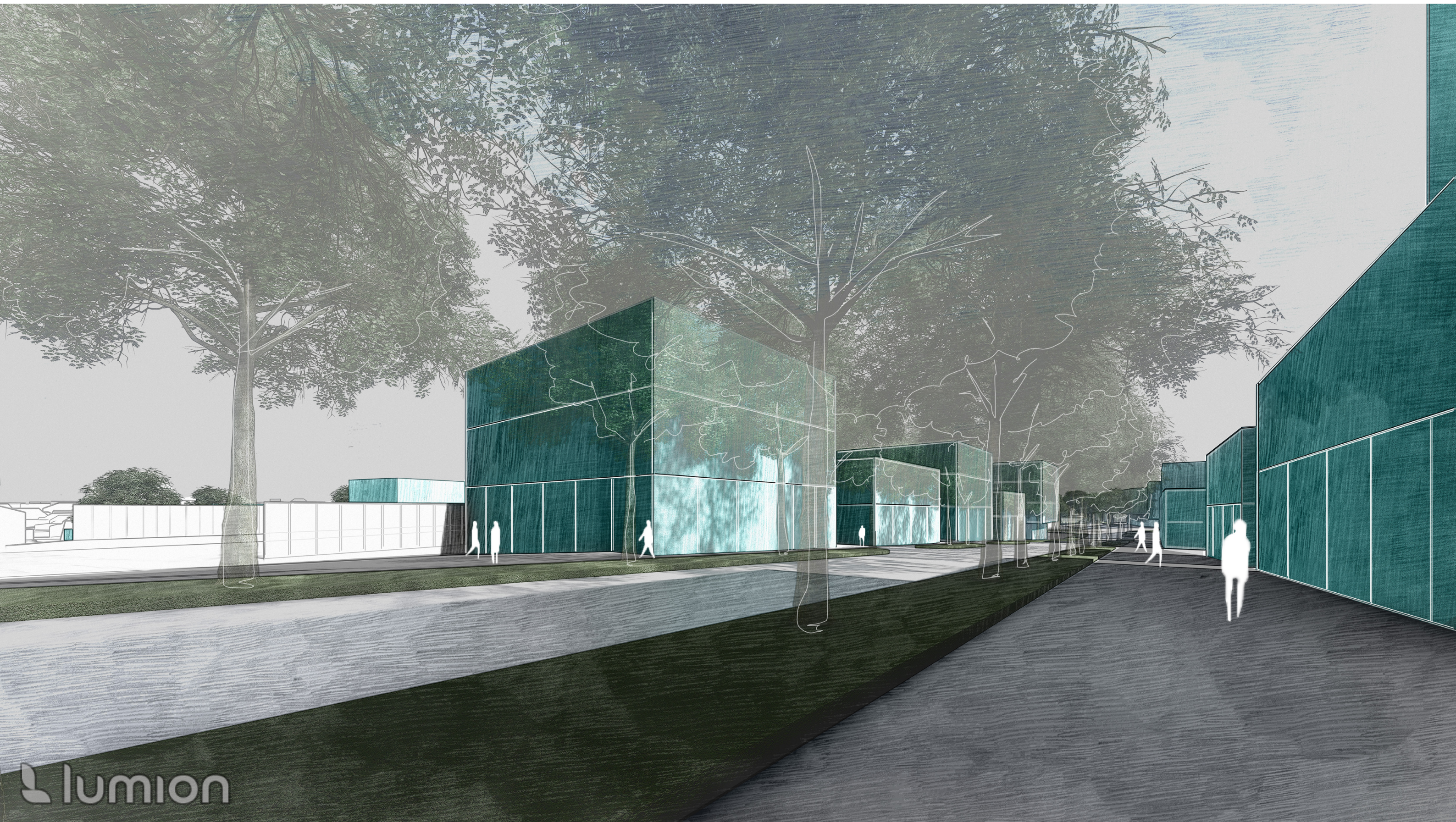




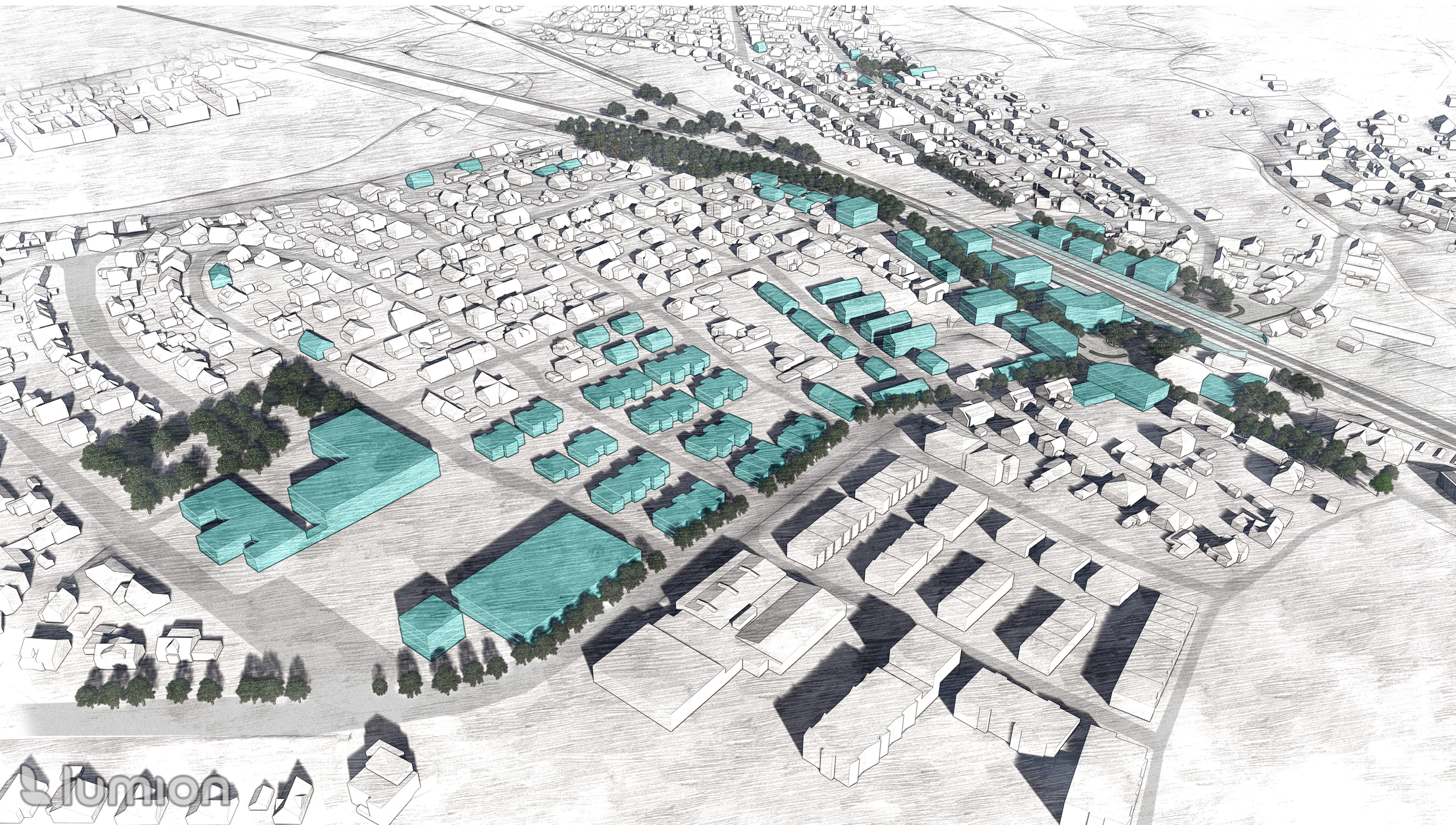


















NIE,

RADŠEJ  
POČERNICE

