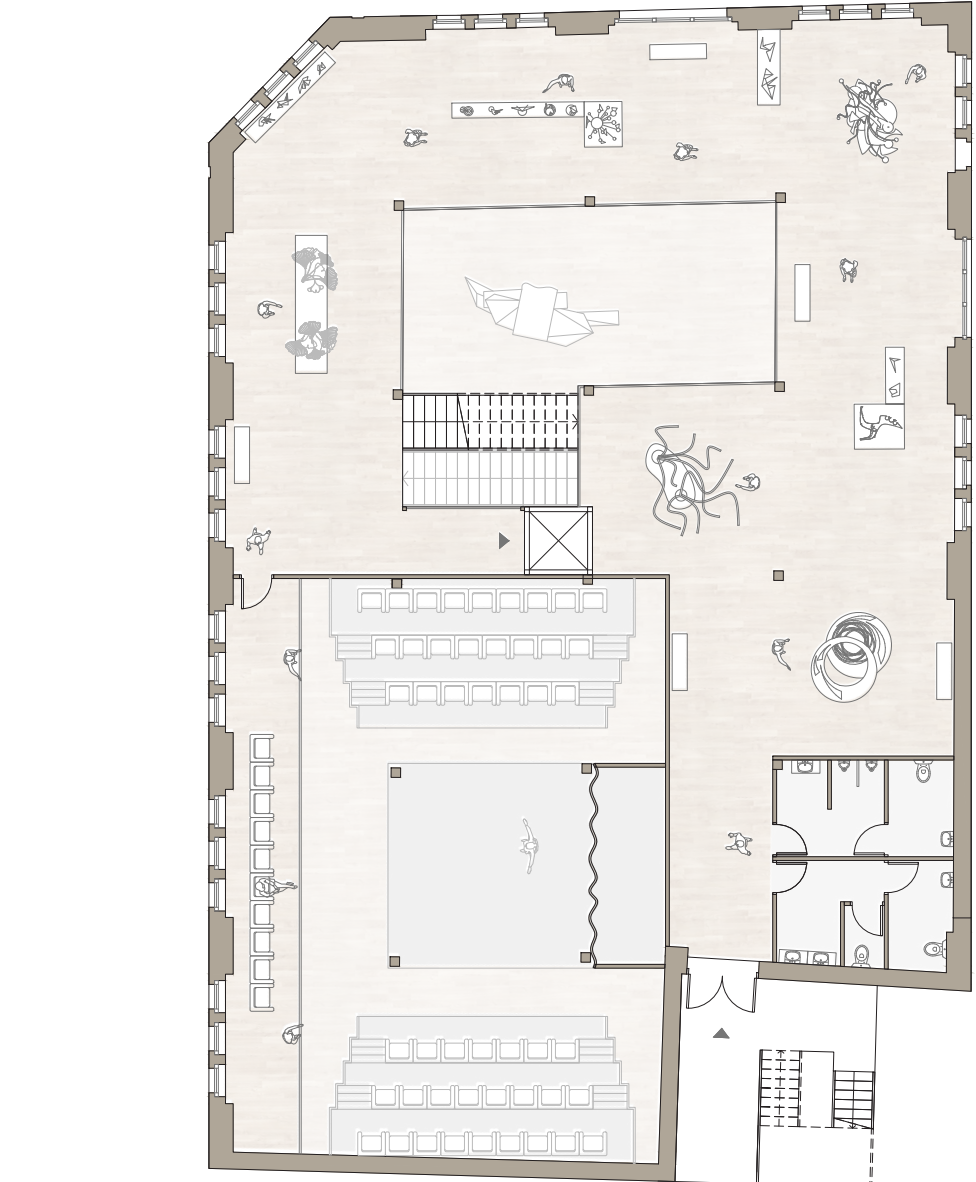
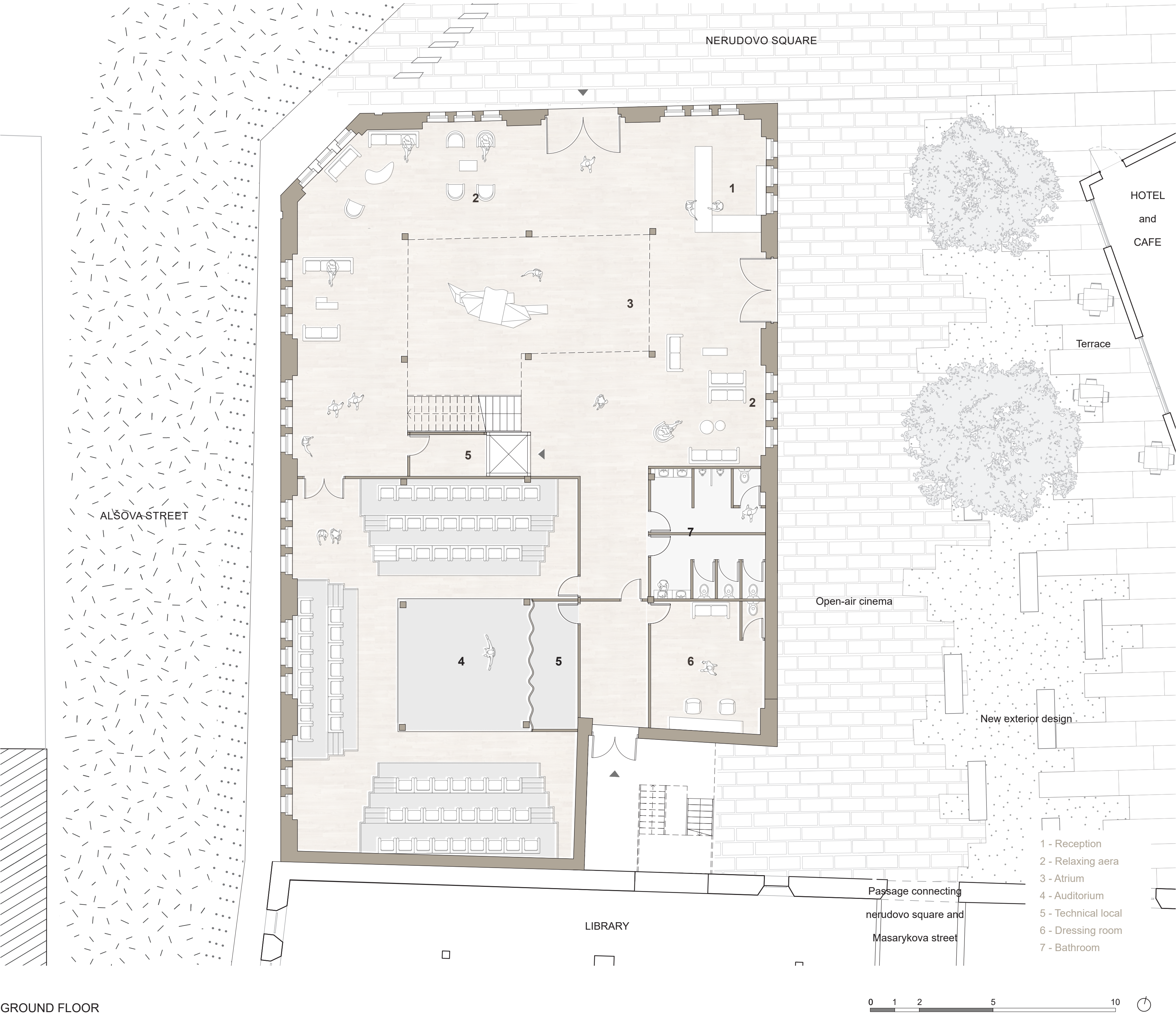




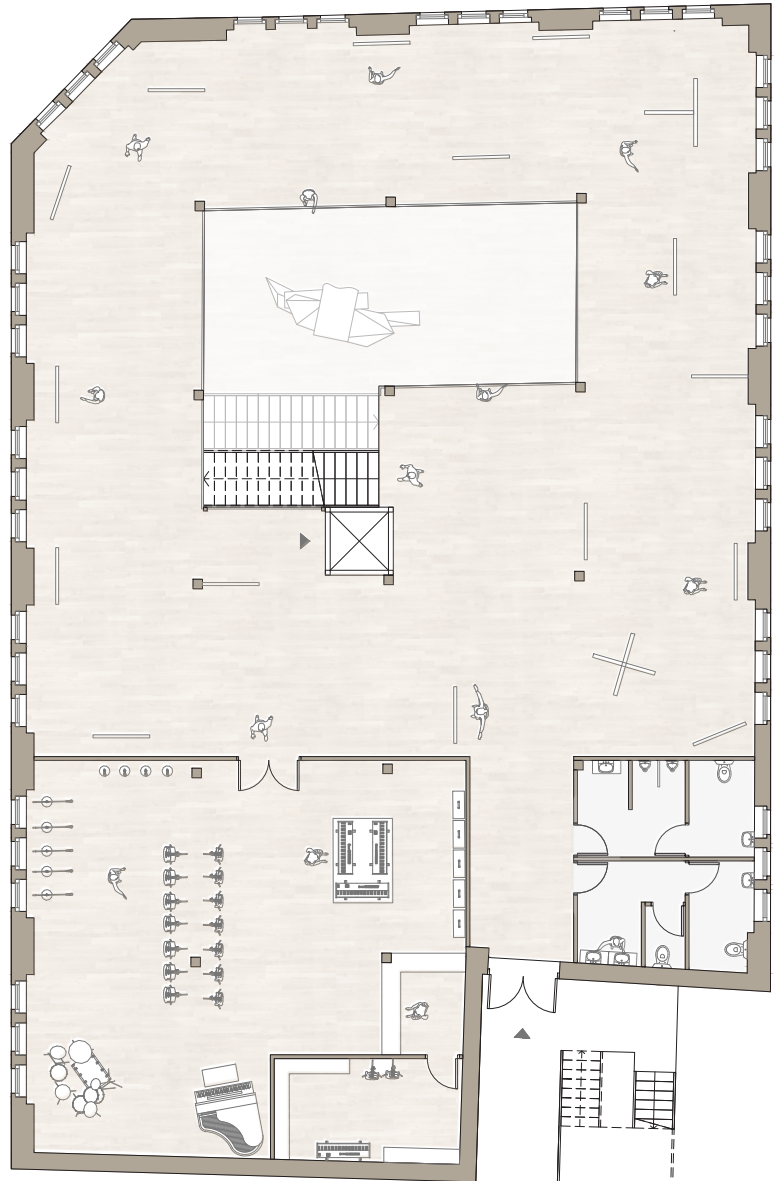
CHARLOTTE BROSSARD (FRANCE)  
1. YEAR OF MAG.  
SUMMER SEMESTER 2022/23, AT2

STAR CULTURAL CENTER  
CONVERSION OF STERN FAMILY HOPS DEPOSIT BUILDING  
ŽATEC REGION OF HOPS - WESTERN BOHEMIA

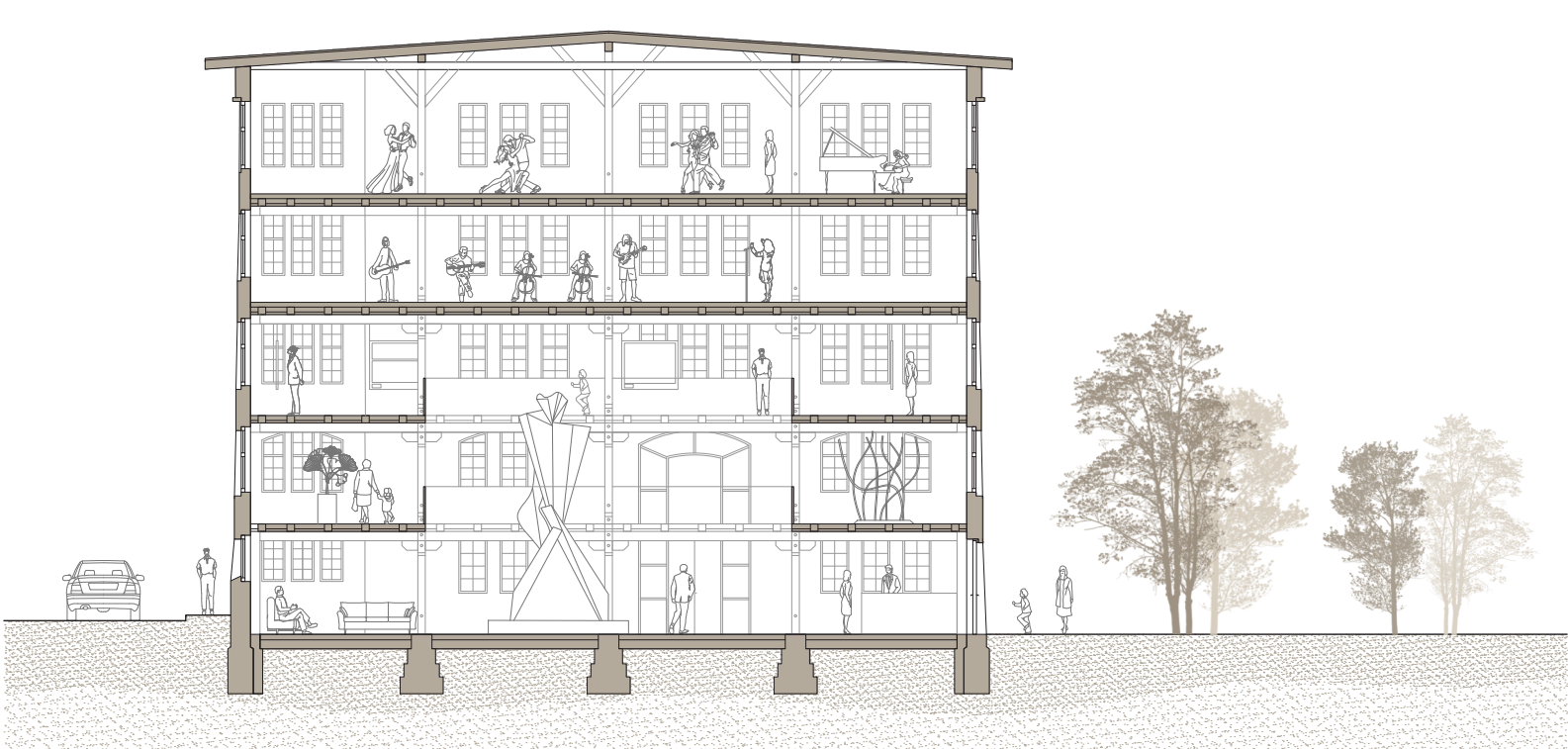
DESIGN STUDIO EFLER  
DEPARTMENT OF ARCHITECTURAL CONSERVATION  
FACULTY OF ARCHITECTURE, CTU IN PRAGUE



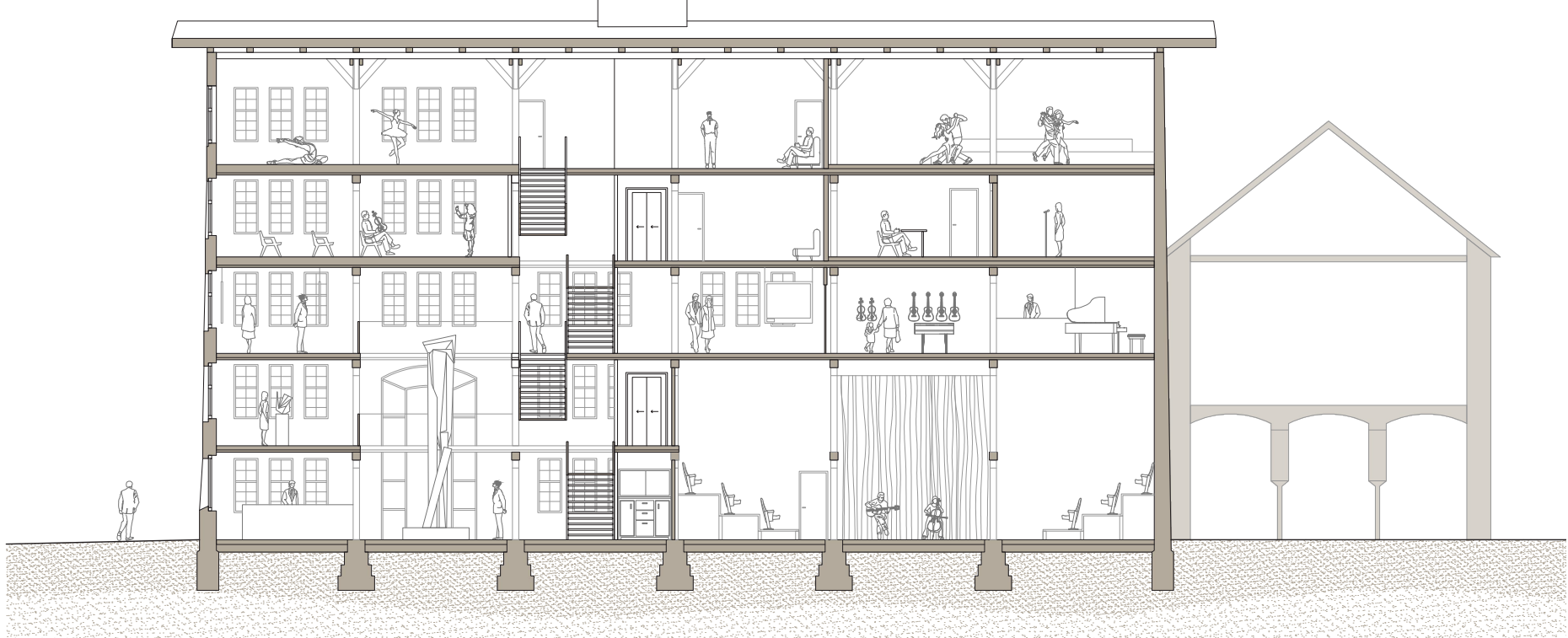
FIRST FLOOR



SECOND FLOOR

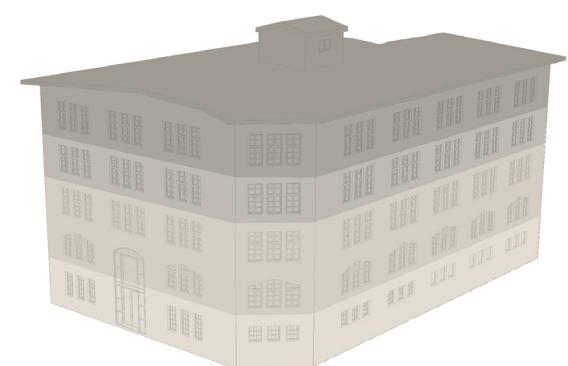


SECTION AA'



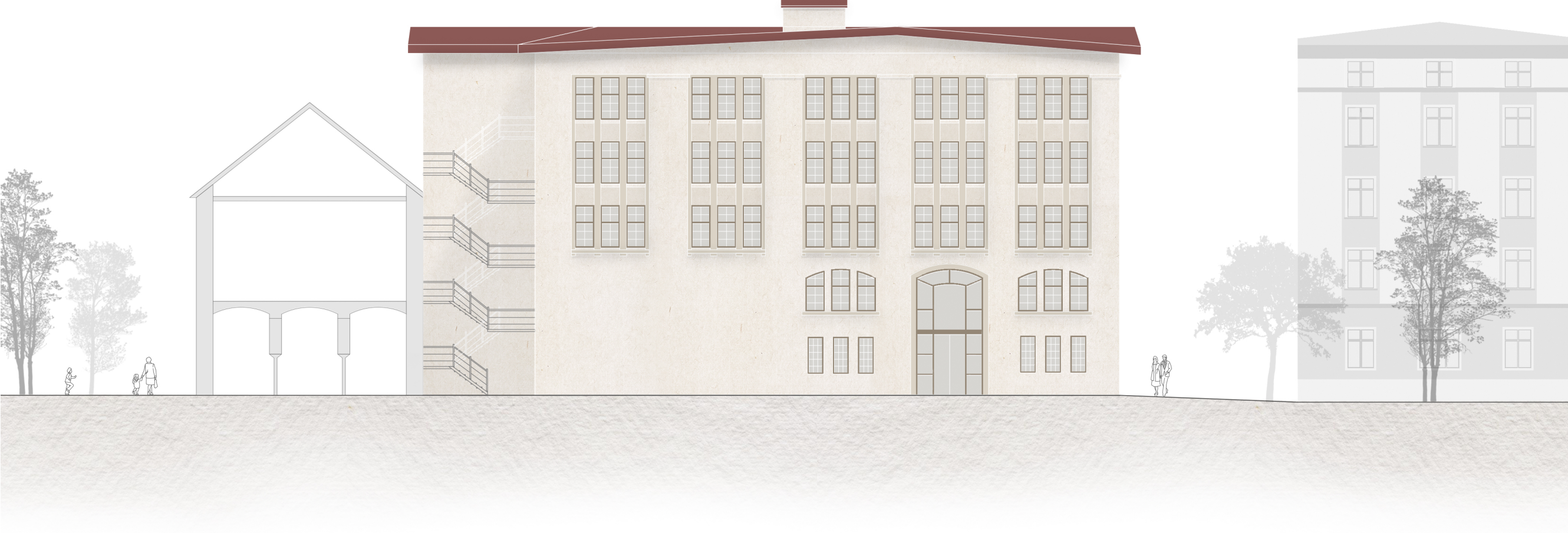
SECTION BB'

Star Cultural Center



- DANCE
- MUSIC
- ART
- PERFORMANCE

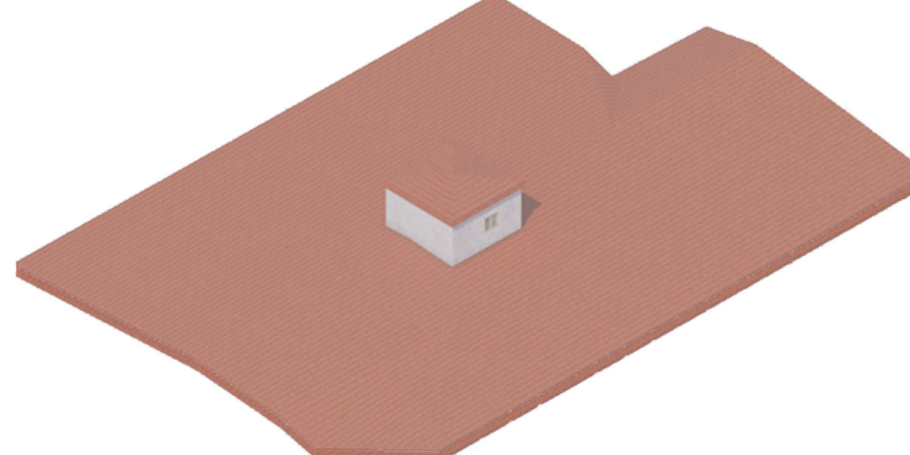
Star Cultural Center is a project based in the town of Žatec, formerly known for its hop production. Many of the town's buildings are now abandoned, which is why Star Cultural Center is proposing to renovate one of its buildings and transform it into a cultural center. The project is part of the renewal of Nerudovo Square, comprising five buildings offering a range of services to local residents (cultural center, library, yoga center) and tourists (café, hotel, open-air cinema). The Star Cultural Centre highlights the architectural qualities of the building and brings together different populations and disciplines such as art, music and dance.



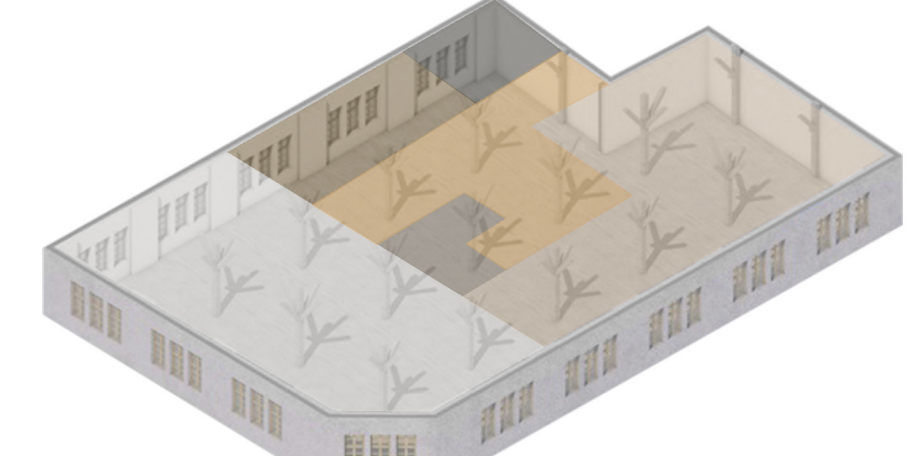
EAST ELEVATION



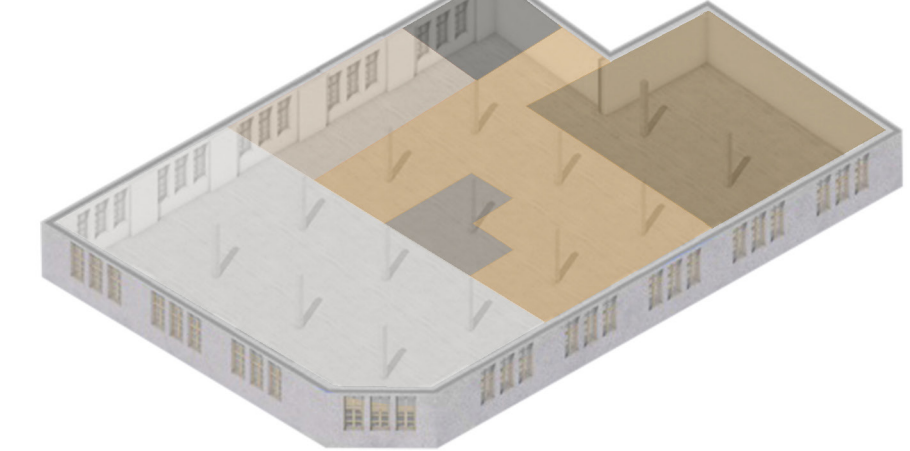
NORTH ELEVATION



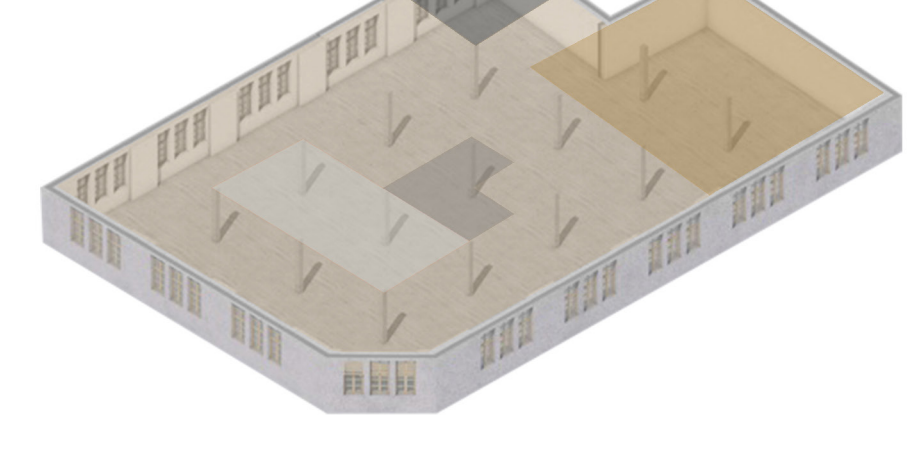
Roof



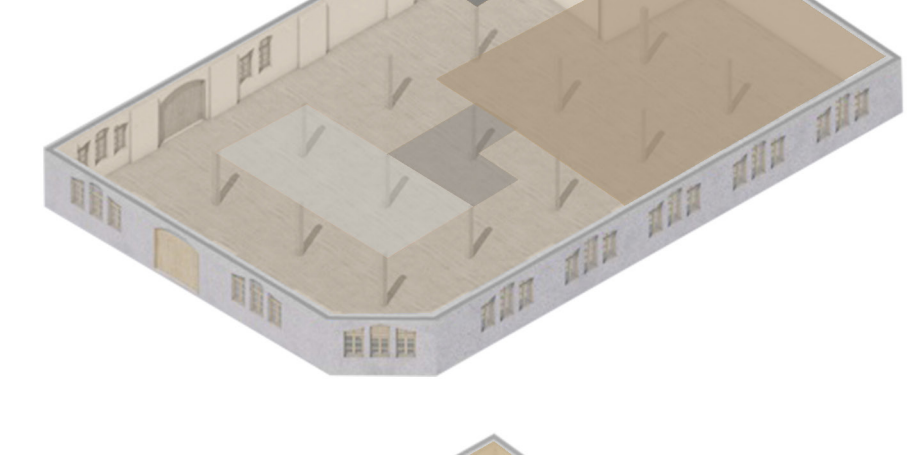
- Dance studio (170m<sup>2</sup>)
- Rehearsal spaces (165 m<sup>2</sup>)
- Changing rooms (45m<sup>2</sup>)
- Common area (95 m<sup>2</sup>)
- Circulation (18 m<sup>2</sup>)
- Bathroom (25 m<sup>2</sup>)



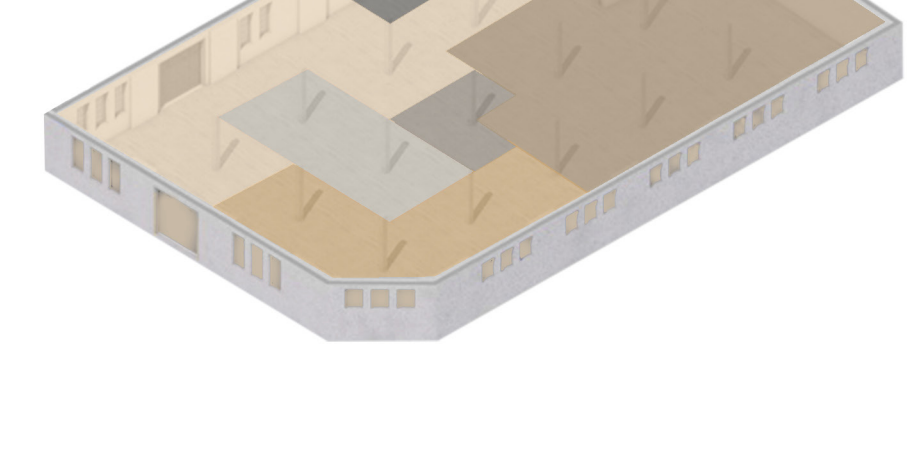
- Music studio (170m<sup>2</sup>)
- Rehearsal spaces (45 m<sup>2</sup>)
- Relaxing area (135m<sup>2</sup>)
- Recording studios (120 m<sup>2</sup>)
- Circulation (18 m<sup>2</sup>)
- Bathroom (25 m<sup>2</sup>)



- Exhibitions (370 m<sup>2</sup>)
- Music shop (120 m<sup>2</sup>)
- Auditorium + Technical local (180 m<sup>2</sup>)
- Bathroom (25 m<sup>2</sup>)
- Atrium (50 m<sup>2</sup>)



- Exhibitions (250 m<sup>2</sup>)
- Auditorium (170 m<sup>2</sup>)
- Circulation (18 m<sup>2</sup>)
- Bathroom (25 m<sup>2</sup>)
- Atrium (50 m<sup>2</sup>)



- Reception (150 m<sup>2</sup>)
- Relaxing area (90 m<sup>2</sup>)
- Auditorium + Technical local (180 m<sup>2</sup>)
- Dressing room (25 m<sup>2</sup>)
- Circulation (18 m<sup>2</sup>)
- Bathroom (25 m<sup>2</sup>)
- Atrium (50m<sup>2</sup>)