

THE FRENCH PAVILION

FOR THE EXPO 2025, OSAKA, JAPAN

-SOUKENKA STUDIO-
SUMMER SEMESTER 2023

LEBOEUF Tiphaine

THEME ANALYSIS

In a country where all freedoms are taken for granted, a country with a rich history. Its people have fought tooth and nail for a better life, for more human rights and more liberties. These social struggles are partly due to one of the most important rights of humanity: **freedom of expression**.

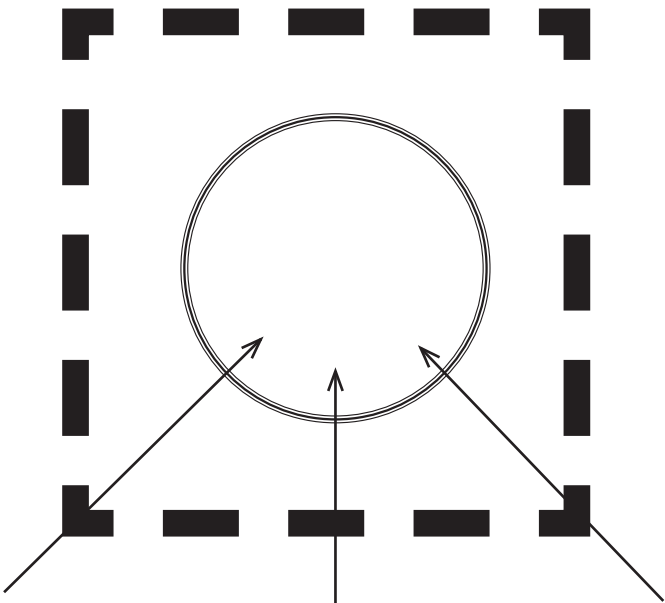
This pavilion is a tribute to the people who fought in the past for all those rights we have today. This building is also a tribute to the people who are still fighting today for democracy, and for the freedom of expression that people feel they are losing, at the risk of being injured, humiliated or arrested in the protests. But above all, this pavilion is an awareness of "what is freedom of expression" and an invitation to all visitors from all countries of the world to take into consideration the importance of their voice, of their opinion as it is their right.



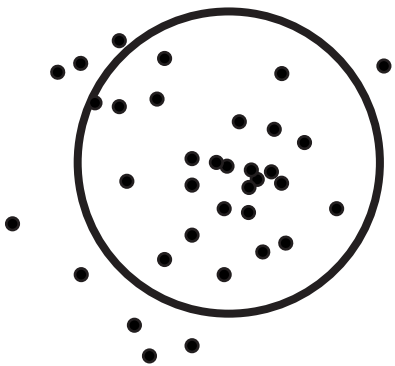
MATERIALS AND TECHNICS

• using items and shapes from the street:

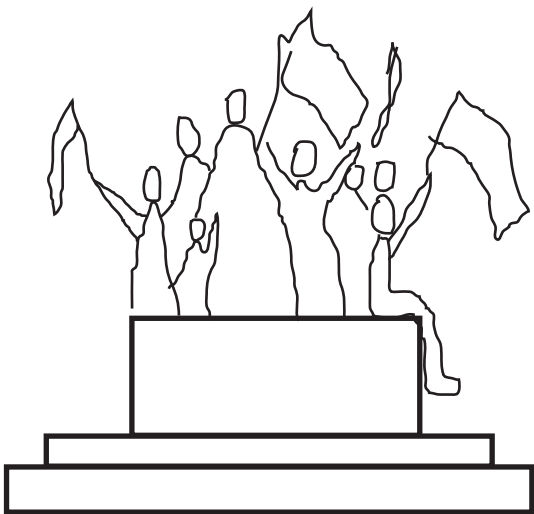
- scaffoldings
- statues
- walls
- monuments
- wooden pallets
- banners
- ...



AN OPEN AREA...



... SO CAN PEOPLE
MEET EACH OTHER AND
GETHER



1 SYMBOLE - MONUMENT-
TO ATTRACT PEOPLE

CONTENT ANALYSIS

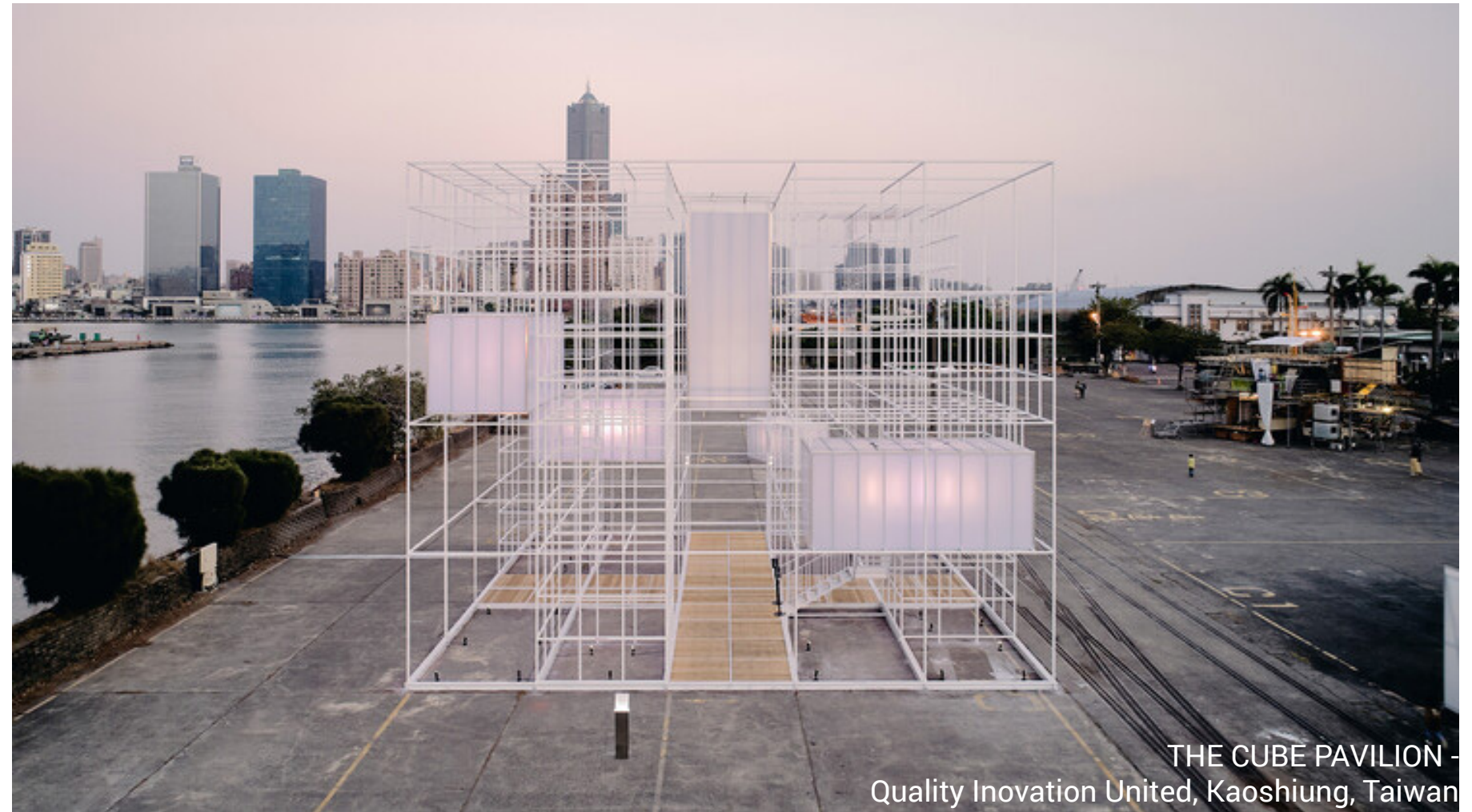
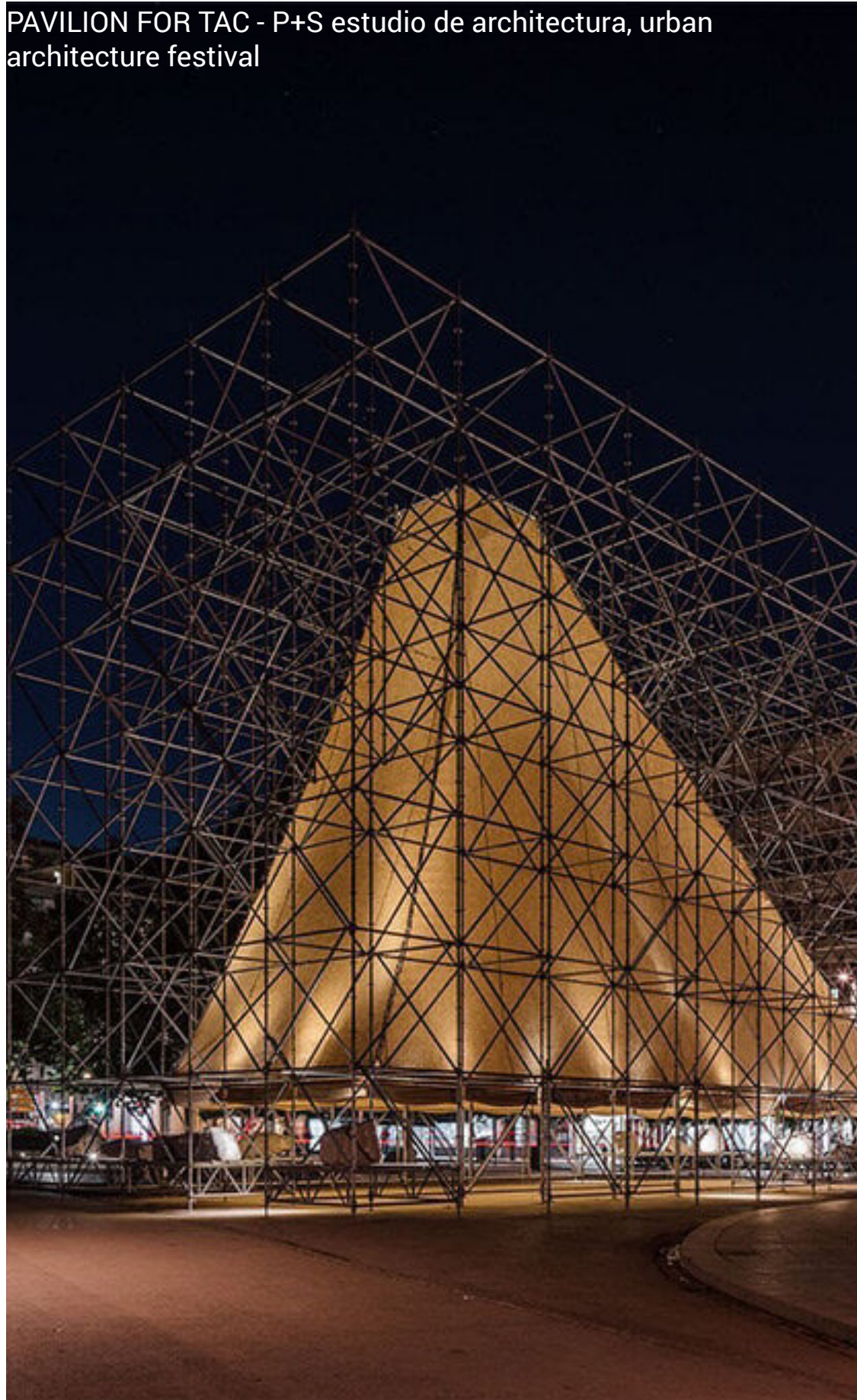
The programme will include

- Self-expression workshops: people will be able to express themselves through poems, songs, painting, creation of banners,
- Workshops for discussion, where people who wish to do so can exchange their ideas and wishes, and where people of all nationalities can be invited to participate in rich debates
- an exhibition gallery presenting a historical retrospective of all the strong moments and struggles that the people have led throughout history to get to where they are today.
- a cafeteria
- the central square is organised around a semi-circular stage and some steps, where people are free to speak and express themselves. Otherwise people can appropriate this space to sit, gather, discuss and exchange with the other occupants of the square.



REFERENCES

PAVILION FOR TAC - P+S estudio de arquitectura, urban architecture festival



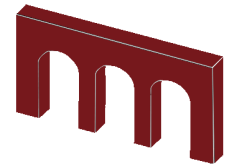
THE CUBE PAVILION -
Quality Inovation United, Kaoshiung, Taiwan

DRIPPING SPRINGS HOUSE
Andrew Kudless, AI sketch explorations, 2023

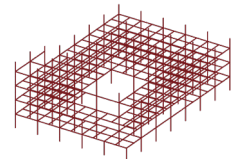


CONCEPT

This pavilion has a very close link with history and chronology. Firstly, because of its exhibition tracing the key moments of social struggles in France. But there is also a temporal notion in the elements that constitute it.



- First of all, we have the triple arch, which is based on the archetype of the Arc de Triomphe, which was formerly a monument of glory, generally to celebrate a victory. It represents the past. Visitors will be attracted and intrigued by these huge doors. The arches encourage the visitor to enter.



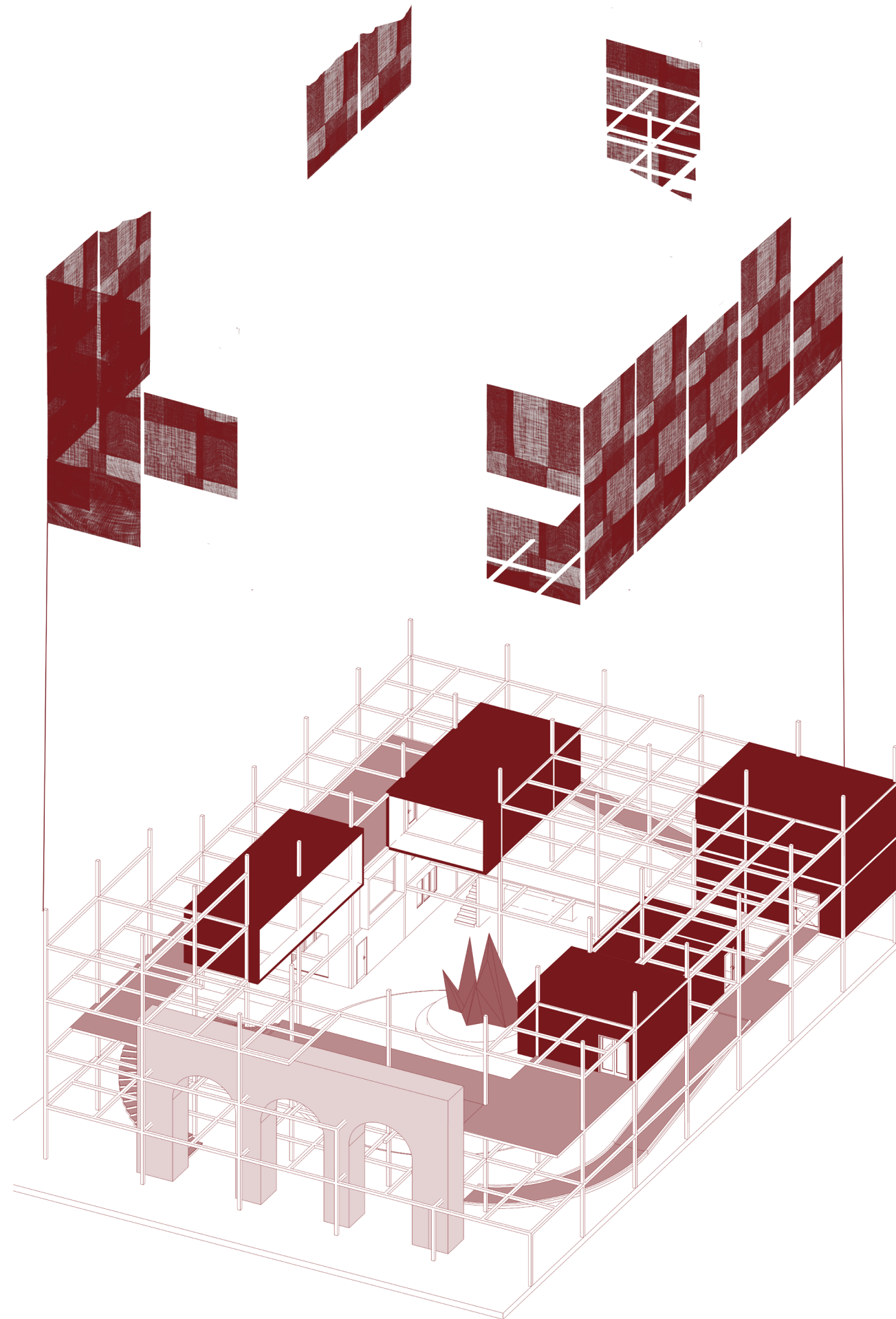
- Then we can see the very gridded shape of the scaffolding which represents the present, a society with a desire for change. In addition, there is the central statue which is a very stylised representation of people who have hope in their struggle and who have their fists raised.



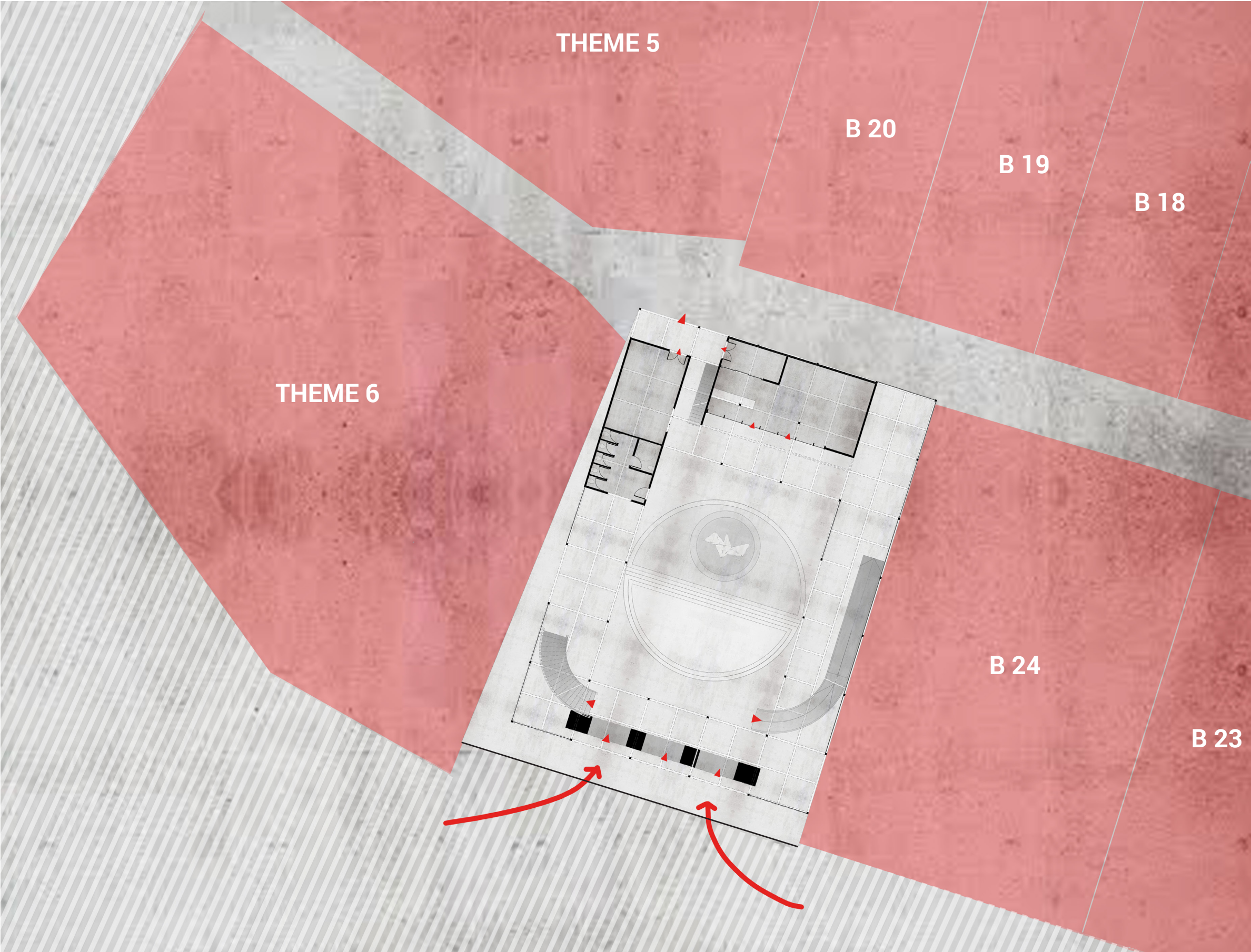
This statue is the focal point of the pavilion and is positioned to bring people together to exchange and debate their ideas and opinions.



- Finally, we have the future represented by all the demands and slogans written by the visitors on the fabric patchwork and on the statue.



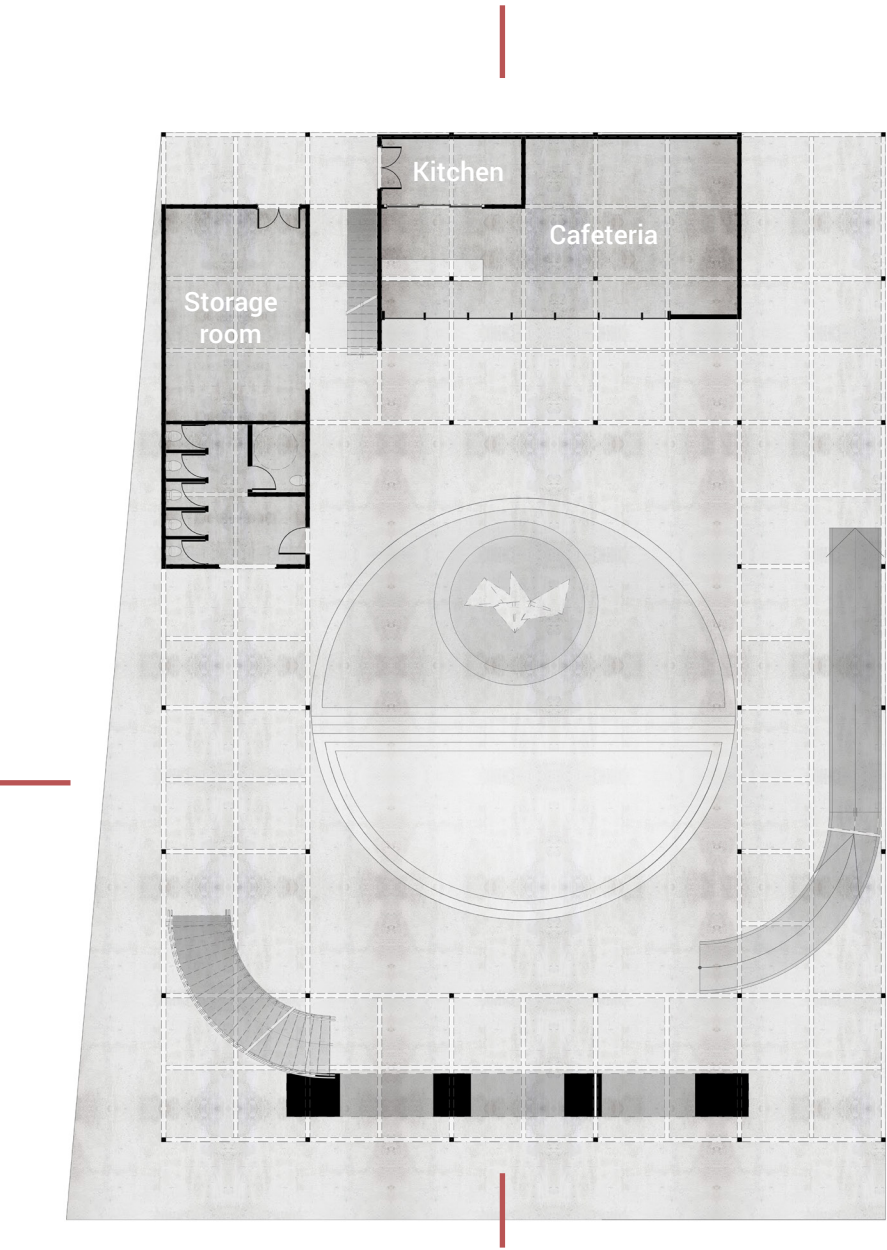
SITUATION



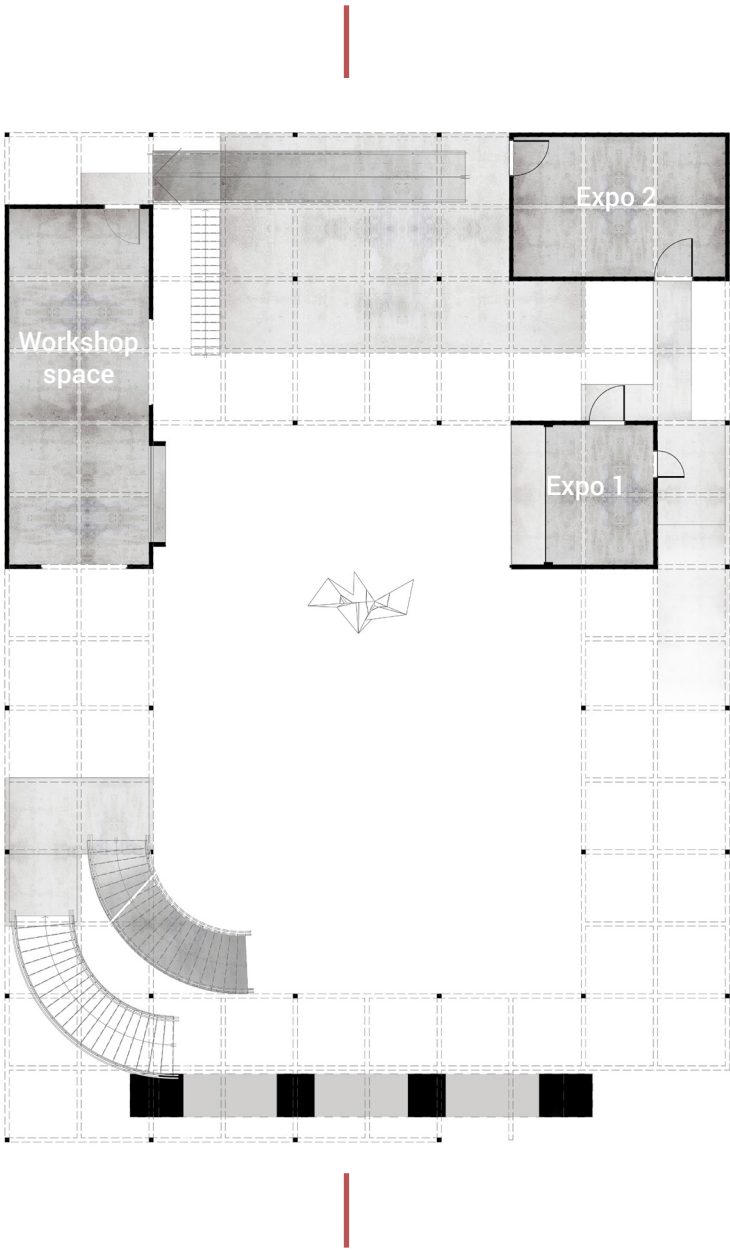
- Visitors acces
- Neighbouring pavilions
- Service acces
- Pedestrian street



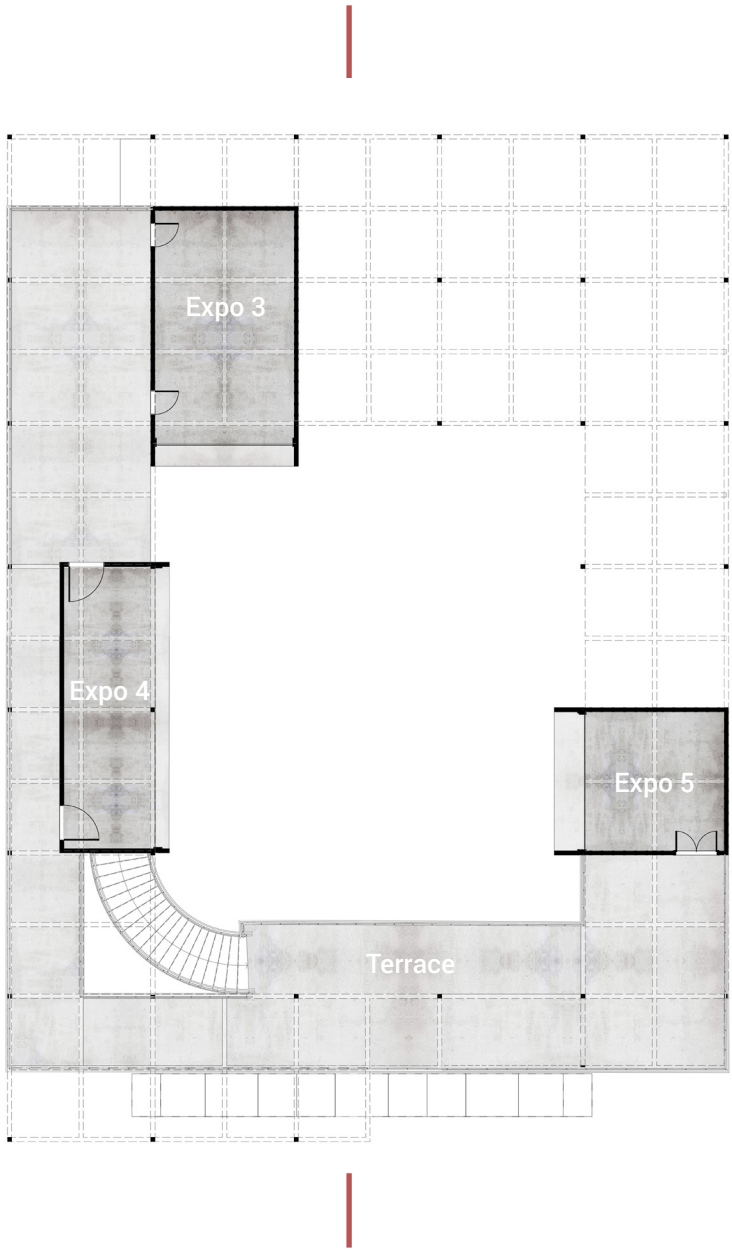
LAYOUT



GROUND FLOOR

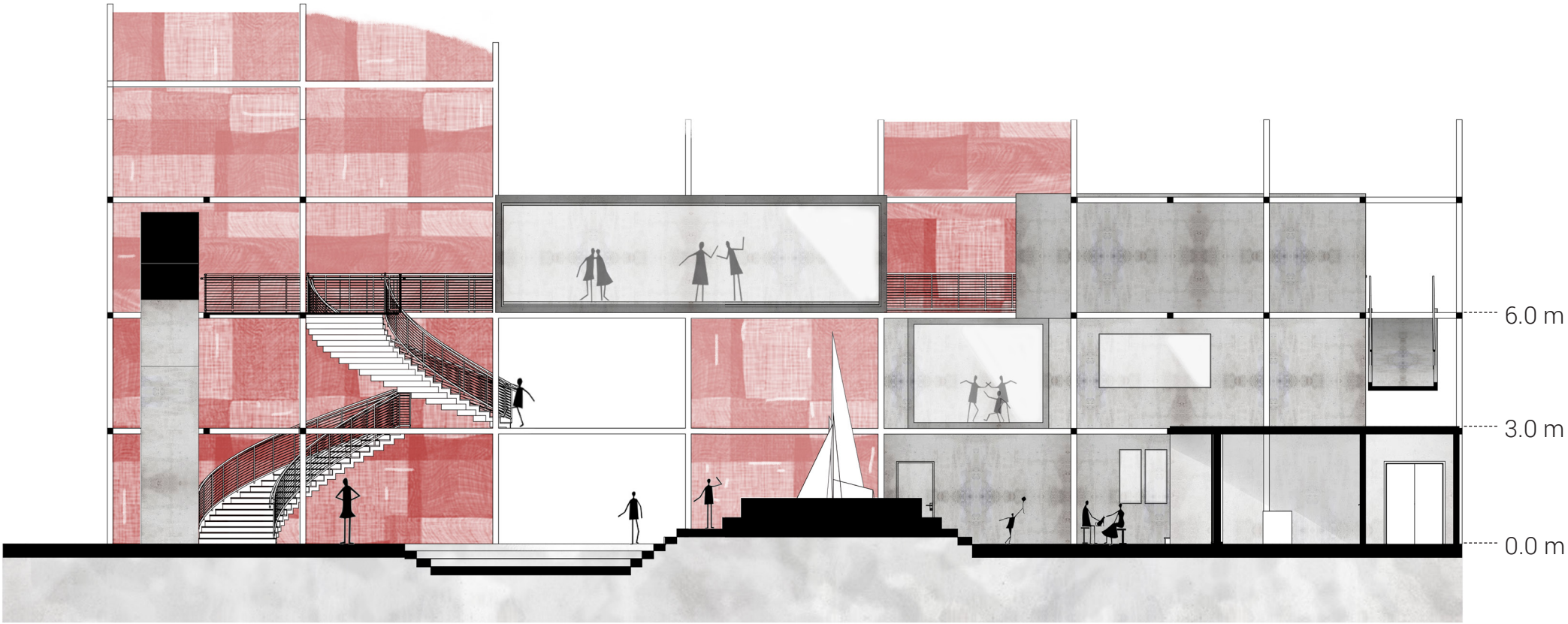


FIRST FLOOR

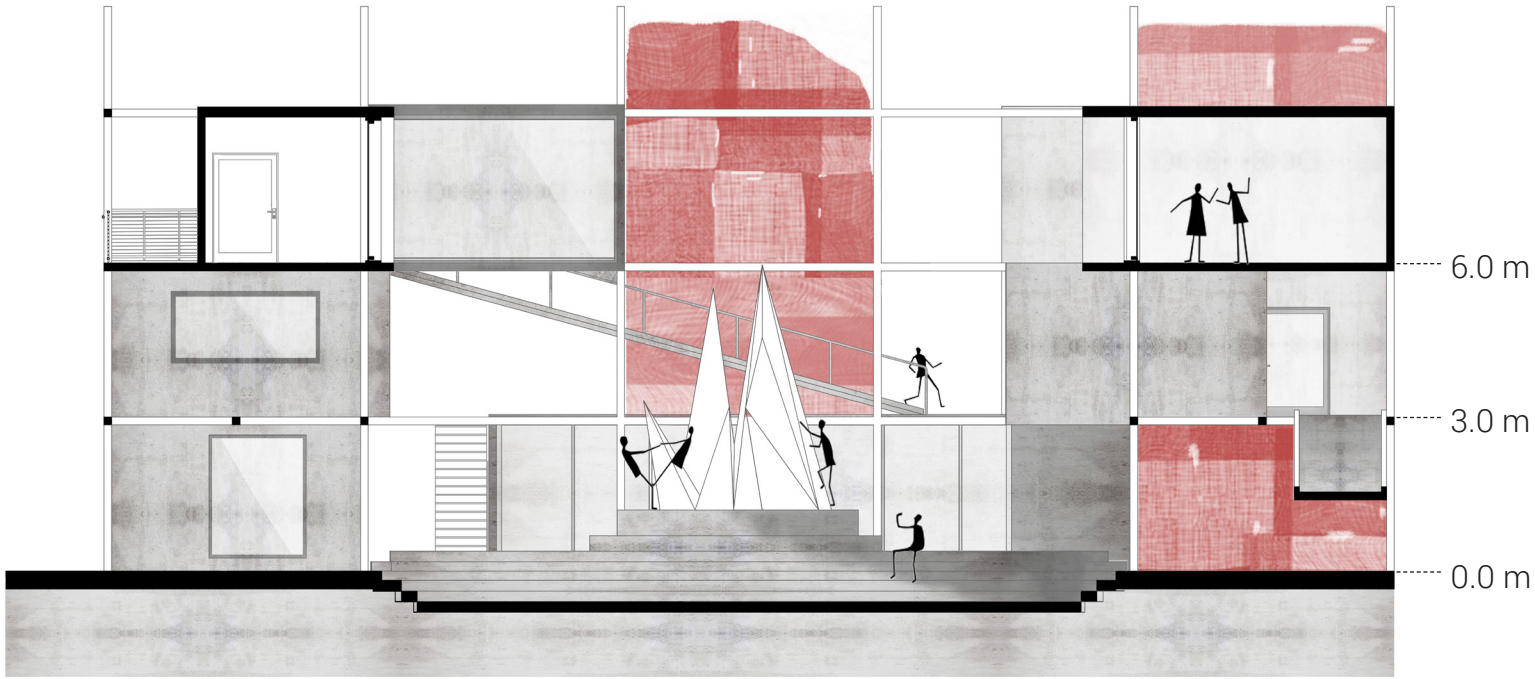


SECOND FLOOR

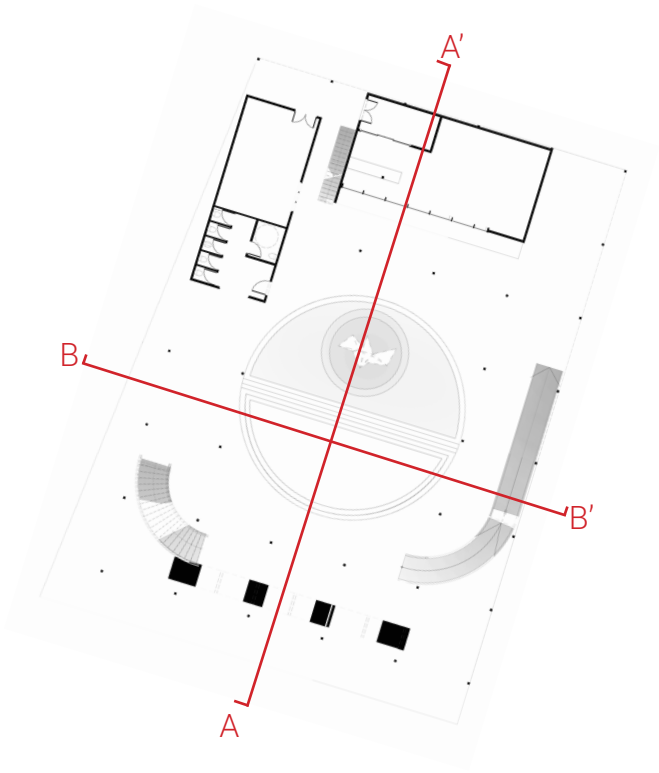
SECTIONS



SECTION AA'



SECTION BB'



ELEVATION



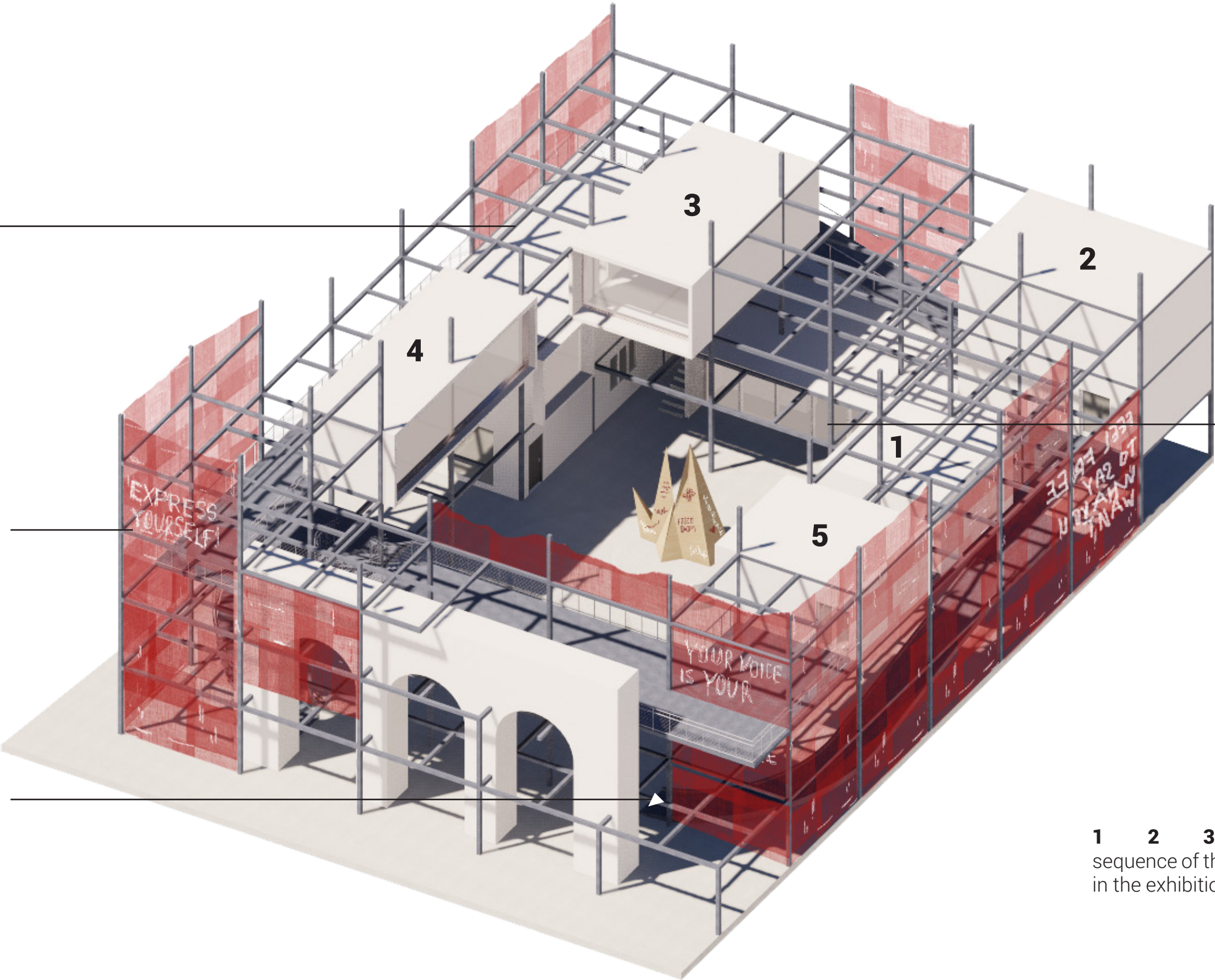
AXONOMETRY

Workshop room on the first floor

Claims and slogans written by the visitors on the fabric patchwork made with fabric and textiles found in the street

Access ramp to the exhibition gallery. Departure of the exhibition.

Cafeteria with its terrace in front



1 2 3 4 5
sequence of the different rooms
in the exhibition gallery

VISUALIZATIONS

Interior views are taken from two different rooms in the exhibition gallery. As can be seen, all the rooms are oriented towards the central courtyard, so that the visitors are inspired by what is going on below, in the courtyard and around the statue.



VISUALIZATIONS

On the outside views in the central courtyard, you can see that visitors have appropriated the central space. You can see people chatting, debating, others just walking, skating, drinking in the cafeteria... They can write on the patchwork fabrics, as well as on the central statue or even on the floor.

