



CHARLES SAUTER

UNITED STATES

VILLA PNEUMA

TYRŠOVA STREET DISTRICT

PRAGUE SUBURB- ŽATEC

ŽATEC - REGION OF HOPS

SUMMER SEMESTER 2022/23

DESIGN STUDIO EFLER

DEPARTMENT OF ARCHITECTURAL
CONSERVATION FA CTU IN PRAGUE

:: πνεῦμα
is an ancient greek word for
breath and nourishment.
in religious context soul or
energy.

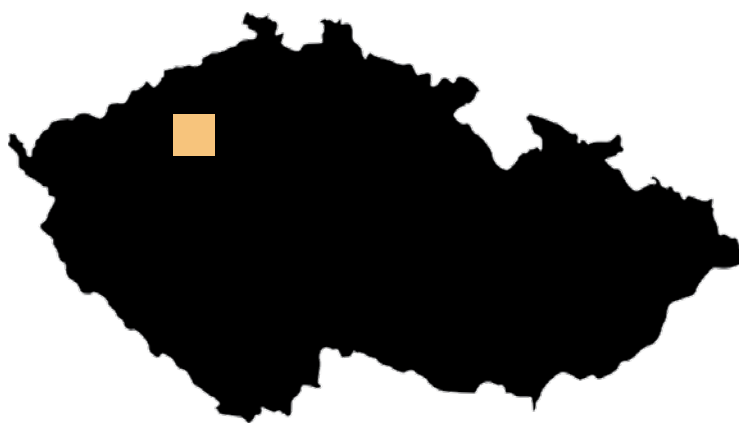


::pneuma



:schwarzplan
:site plan
:elevation
:exsisting context
:historical documents

topos: :



:: The Czech Republic is known for many things. One that stands above the rest, is beer. Czech people love their beer, and in turn love the things that make beer. Conditions like these make the “town of hops” a culturally important place.

:czech
republic

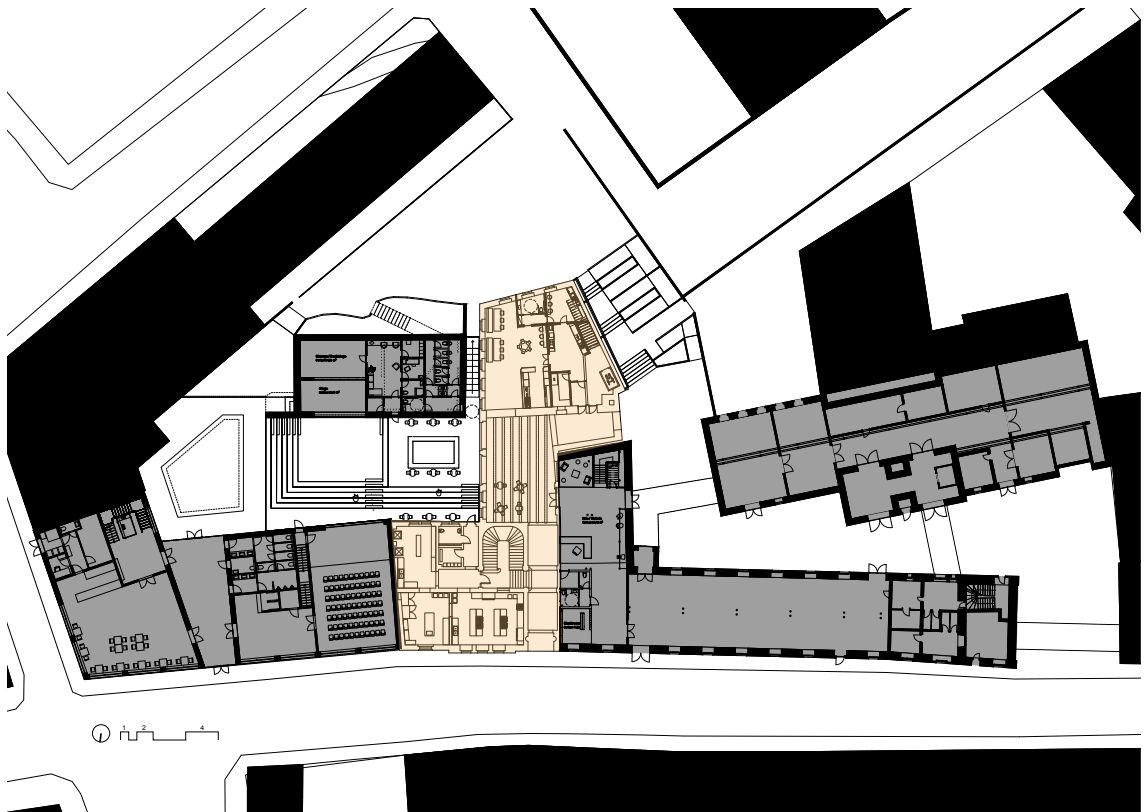
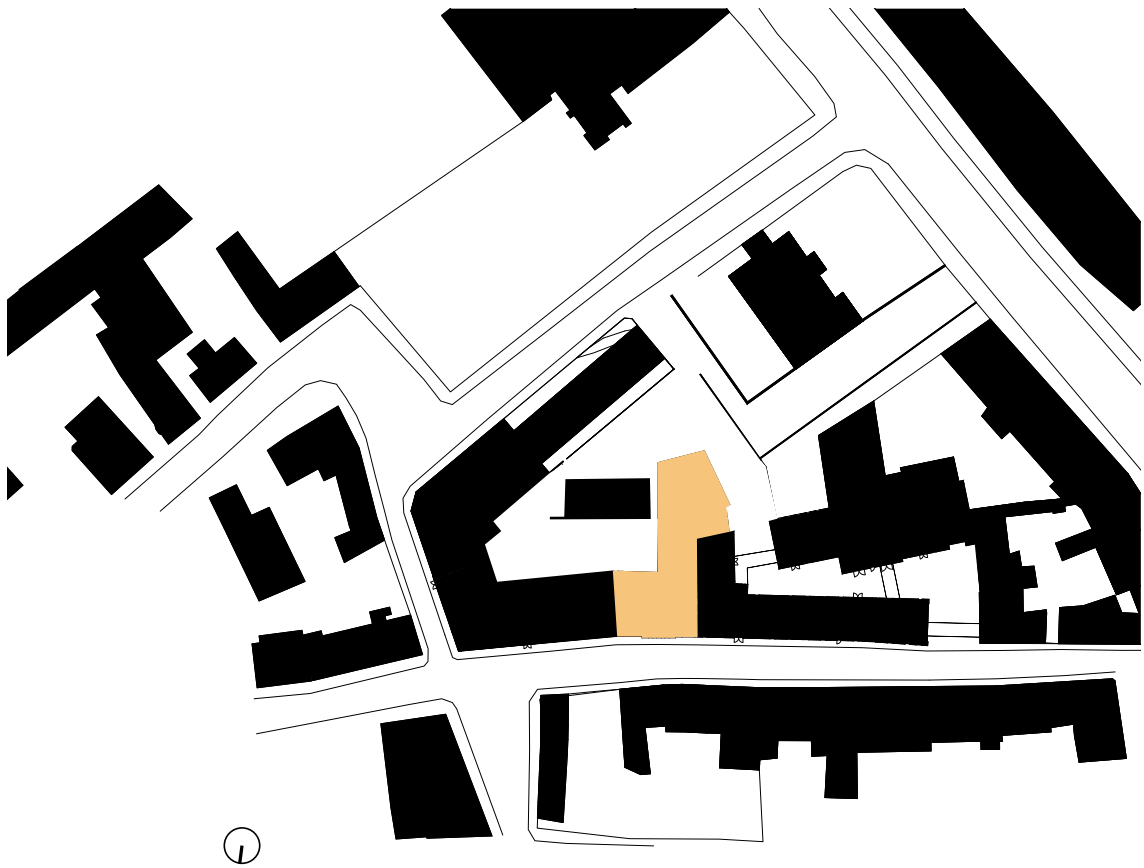


:: Villa Pneuma is a renovation project on an abandoned villa in the Czech town of Žatec. Located along a river in the Ústí nad Labem Region known for its perfect soil conditions for the growing of hops. Žatec grew up with and around the hops, weaving it heavily into their culture. Hops unique processes for preparation of transport and storage created a need for many drying sheds, or hops warehouses._

One type of drying system used hot sulfur chambers to dry and preserve the hops expelling the sulfur fumes through chimneys. These drying warehouses have or had 30 meter tall chimneys strongly influencing the “skyline” of Žatec. The warehouses in the middle of the town also created interesting building typologies._

One of the most unique typologies being the combination of a villa and warehouse under one roof.

:žatec



: : Just South of the main square, the Klášterní district or Tyršova Street District exists in relative neglect with a dense population of old hops warehouses. These warehouses are being adaptively reused in a coordinated project to revitalize the district. Empty plots are being filled with new buildings and vacant buildings are being given a new use.

: Highlighted in yellow is Villa Pneuma and shaded in dark gray are the adjacent reuse projects.

: klášterní district





:: Villa Pneuma is a reuse project of the historically Villa Bondy. Built and owned by Josef Bondy the villa was lived in by him and his family. Later, a hops warehouse was constructed directly connecting to the villa. The Bondy family having Jewish heritage, like many of the people from Žatec at the time, did not return after the catastrophe of WW2.

: In the historical documents there is evidence of the warehouse originally having its own chimney, which was porbably taken down due to danger of collapse. With chimneys being of such importance in the context of Žatec it was clear that the chimney needed to be rebuilt in some way.

:historical documents



:: While existing under the same roof the atmospheres of the villa and the warehouse are in stark contrast. While in some cases they possess similar architectural elements, they are expressed completely different. It was important to take precise note on the character of the atmospheres in both spaces and make sure it was preserved.

: :Villa
:01_skylight from attic
:02_grand staircase
:03_living room
: :Hops Warehouse
:04_inside chimney
:05_roof structure connection
:06_main room floor structure

:atmo _sphere



:elevation
:sections
:floor plans
:visualisations

morph: :

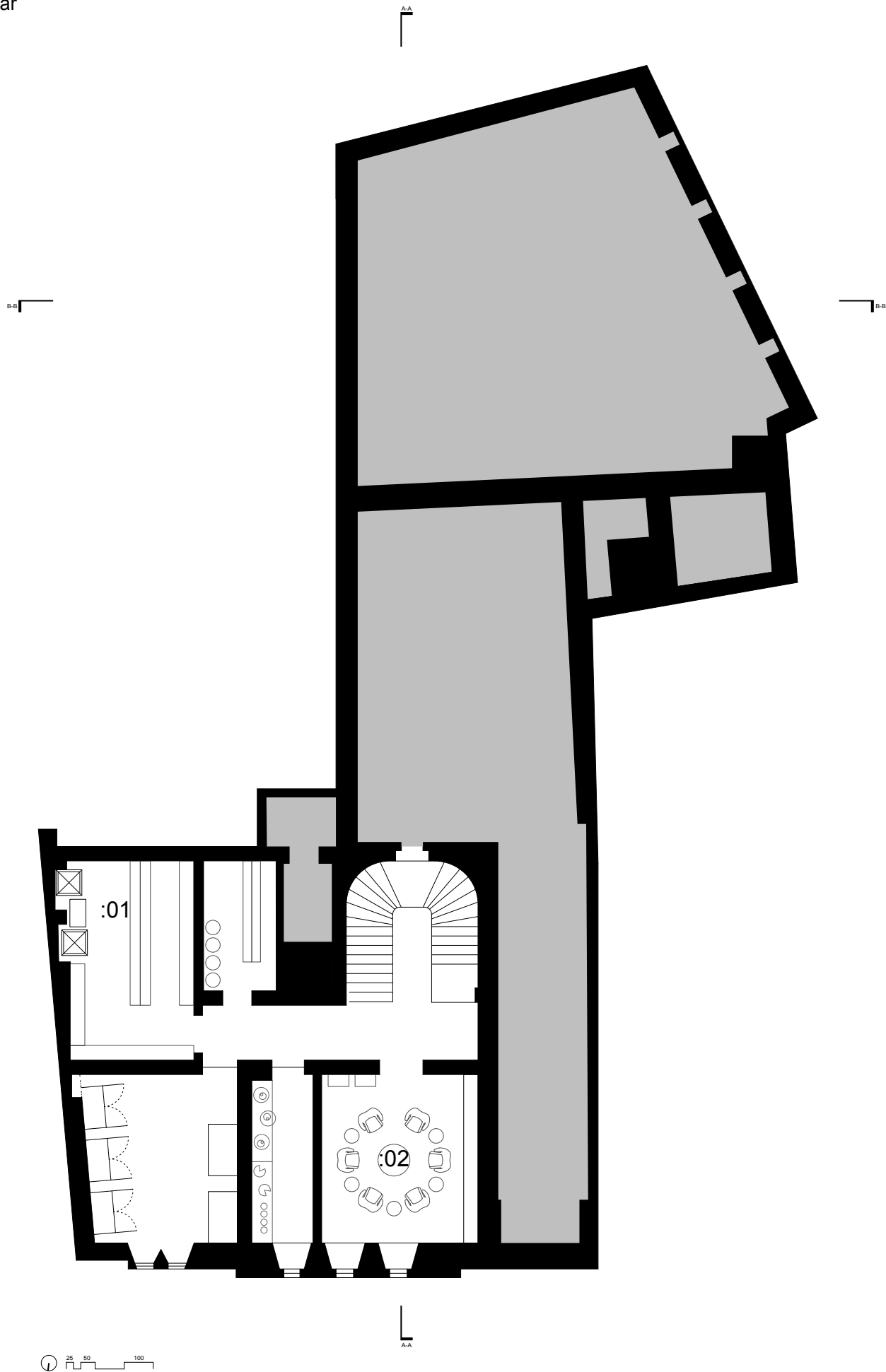


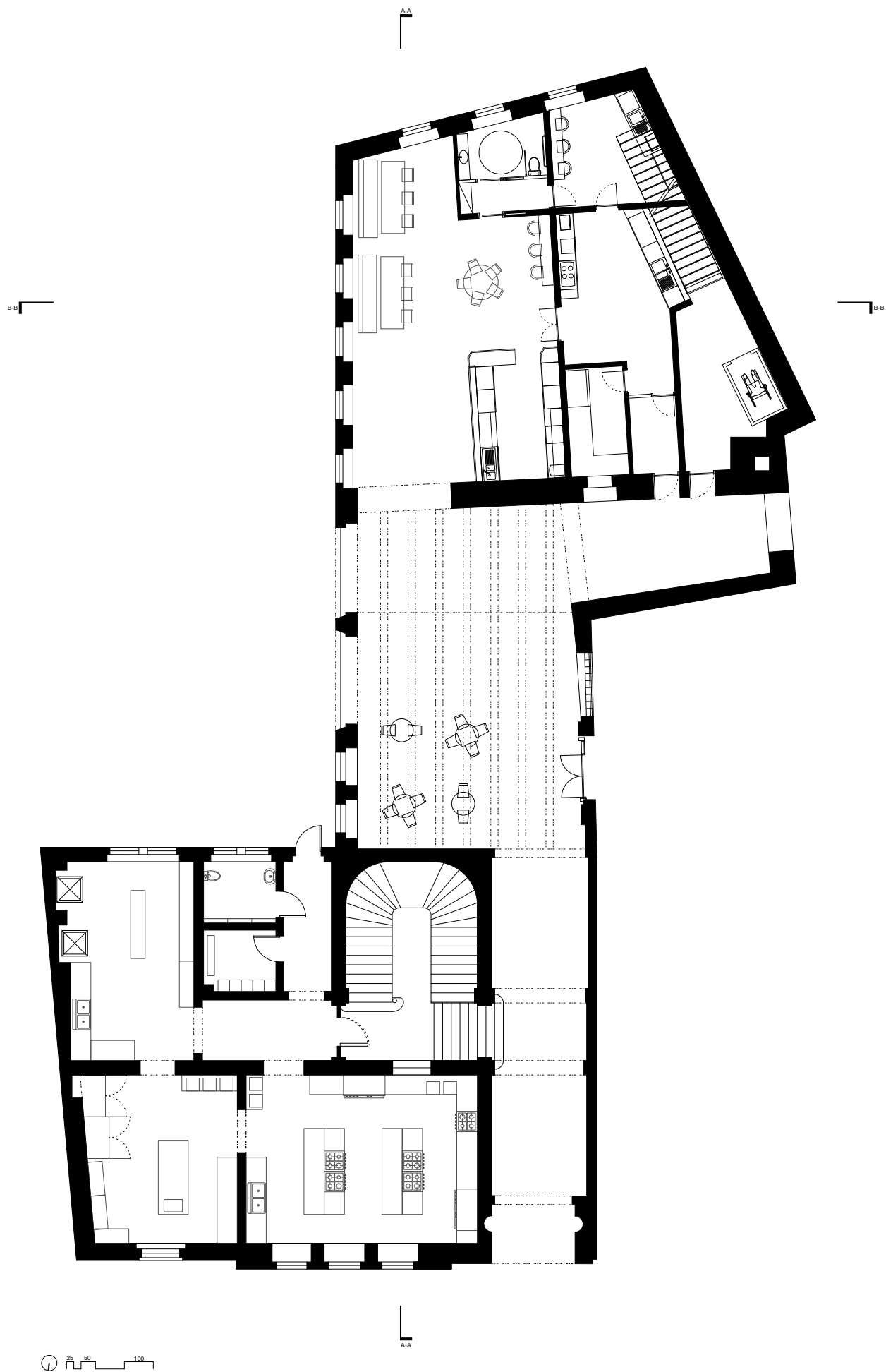


:cellar floor plan

:01_dumb waiter prep

:02_wine cellar

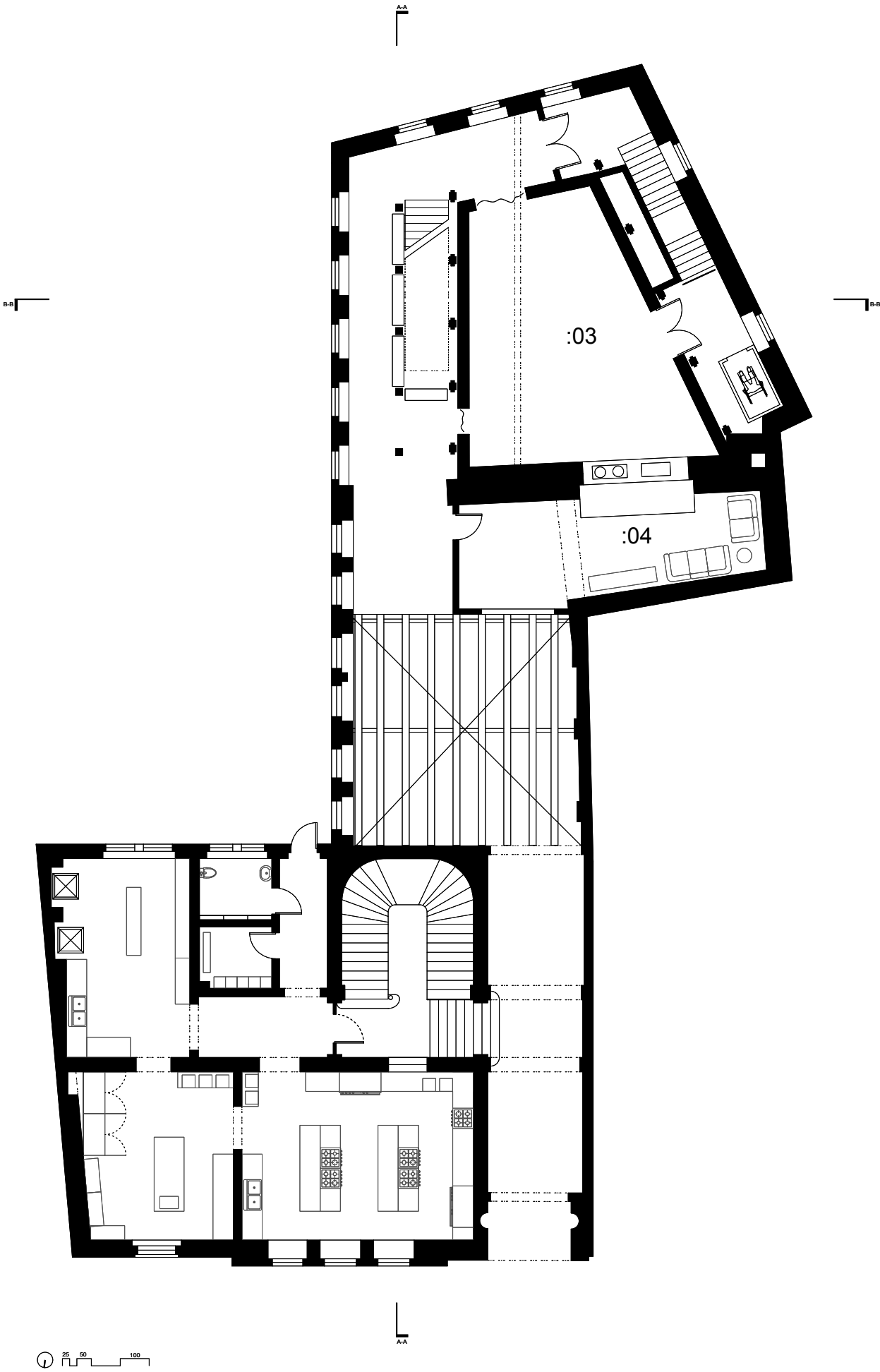




:2nd floor plan

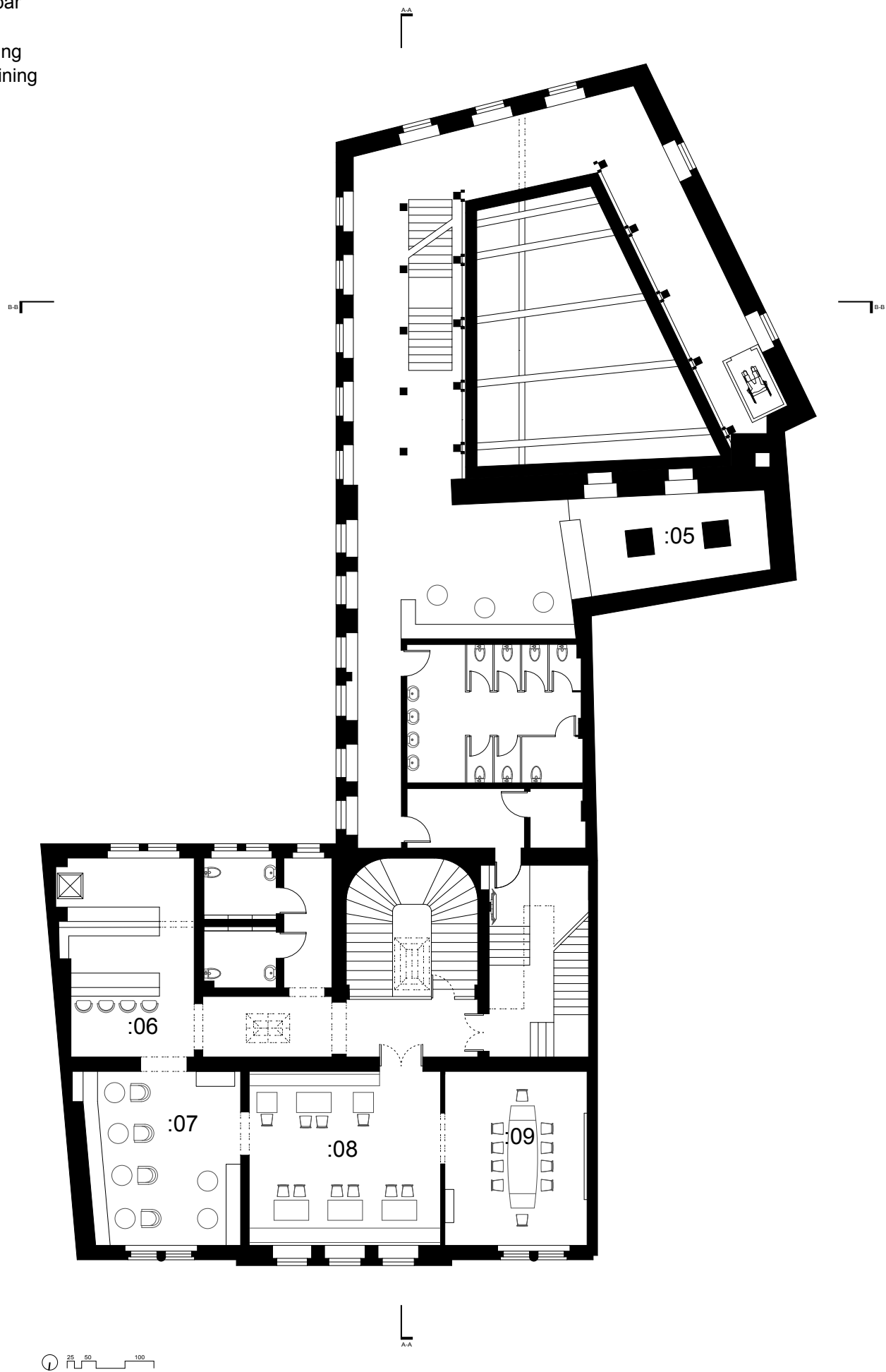
:03_music hall

:04_dj pult



:3rd floor plan

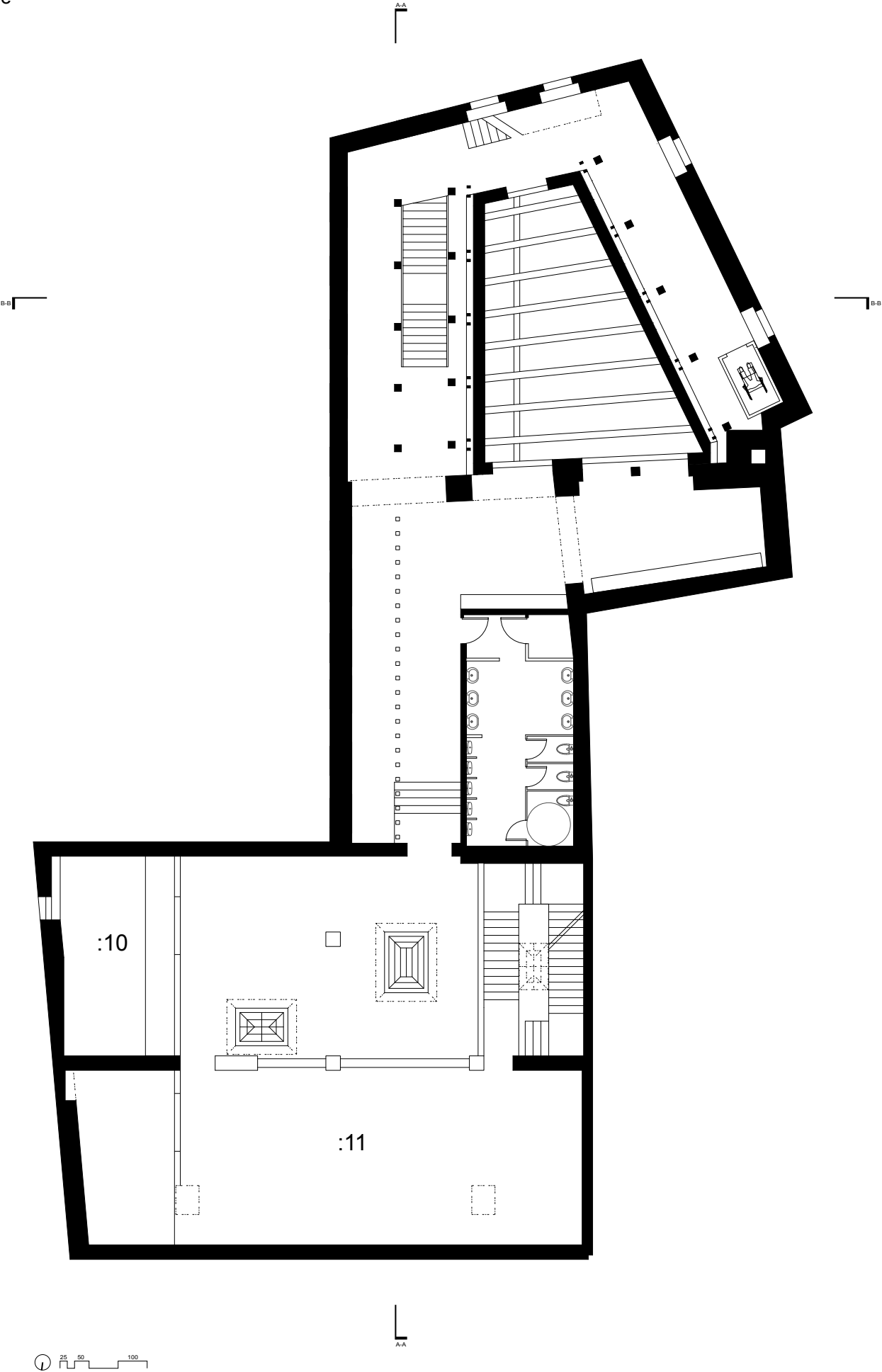
- :05_club bar
- :06_cocktail bar
- :07_lounge
- :08_main dining
- :09_private dining



:4th floor plan

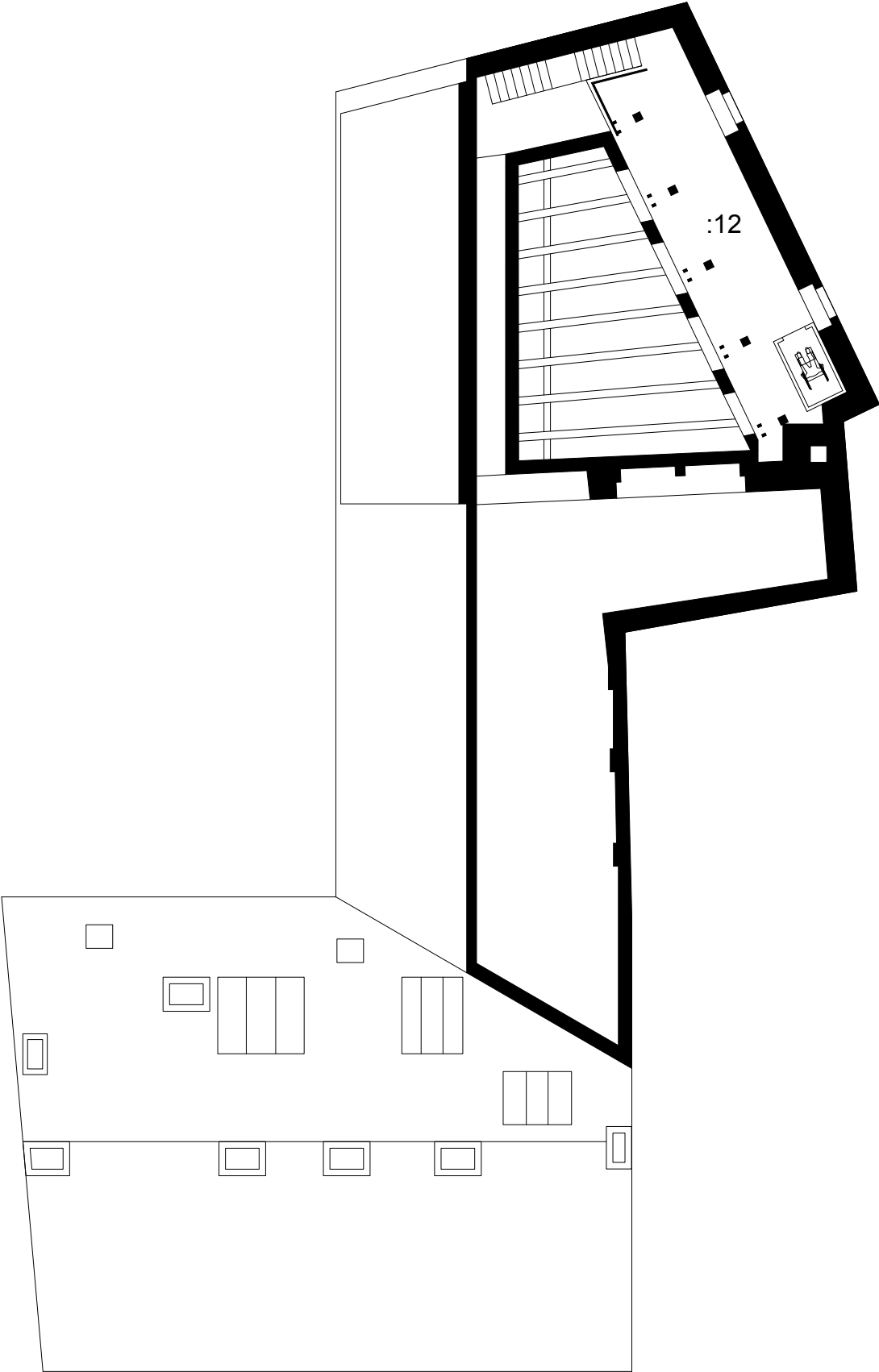
:10_coat check

:11_club quene



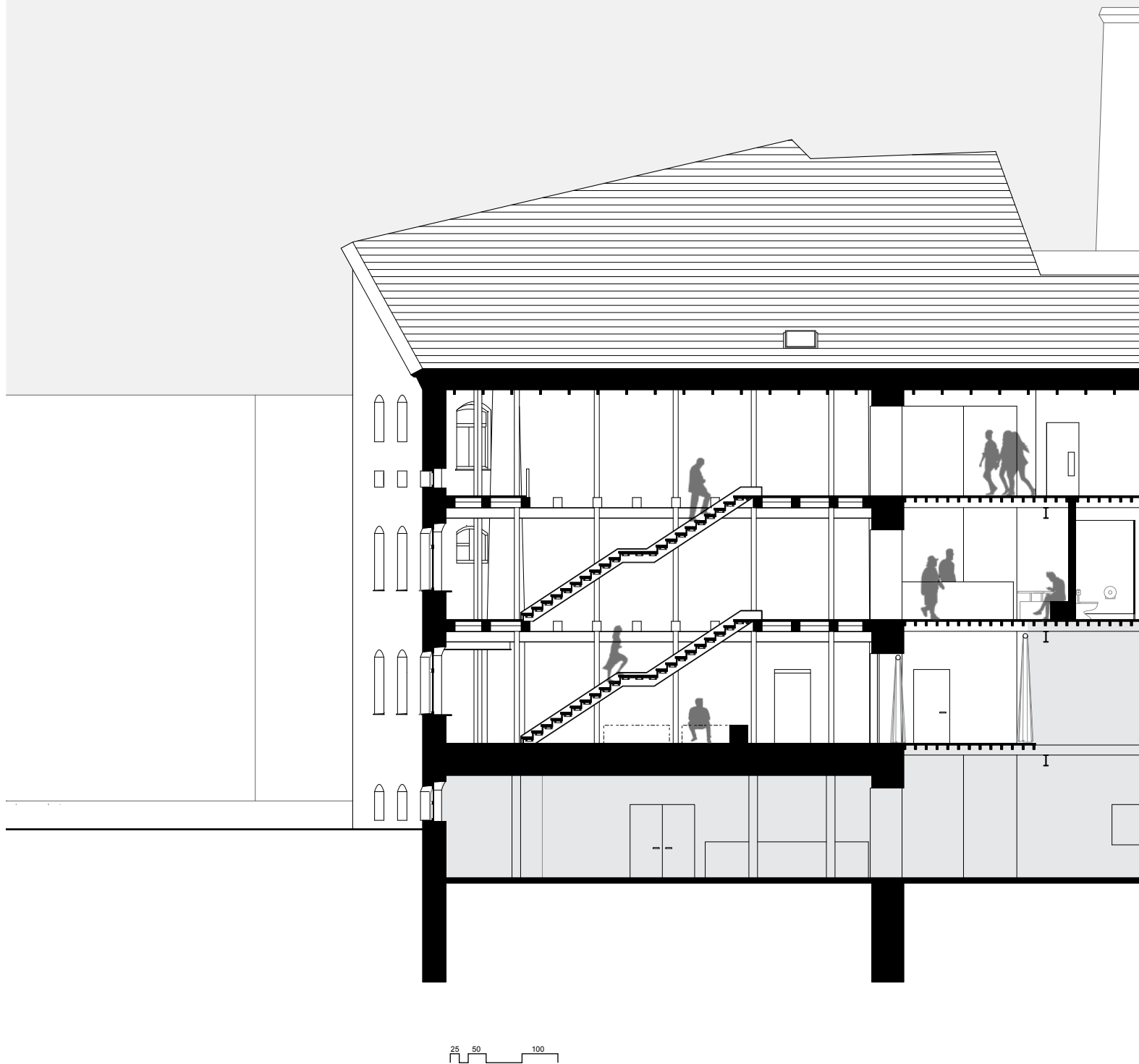
:5th floor plan

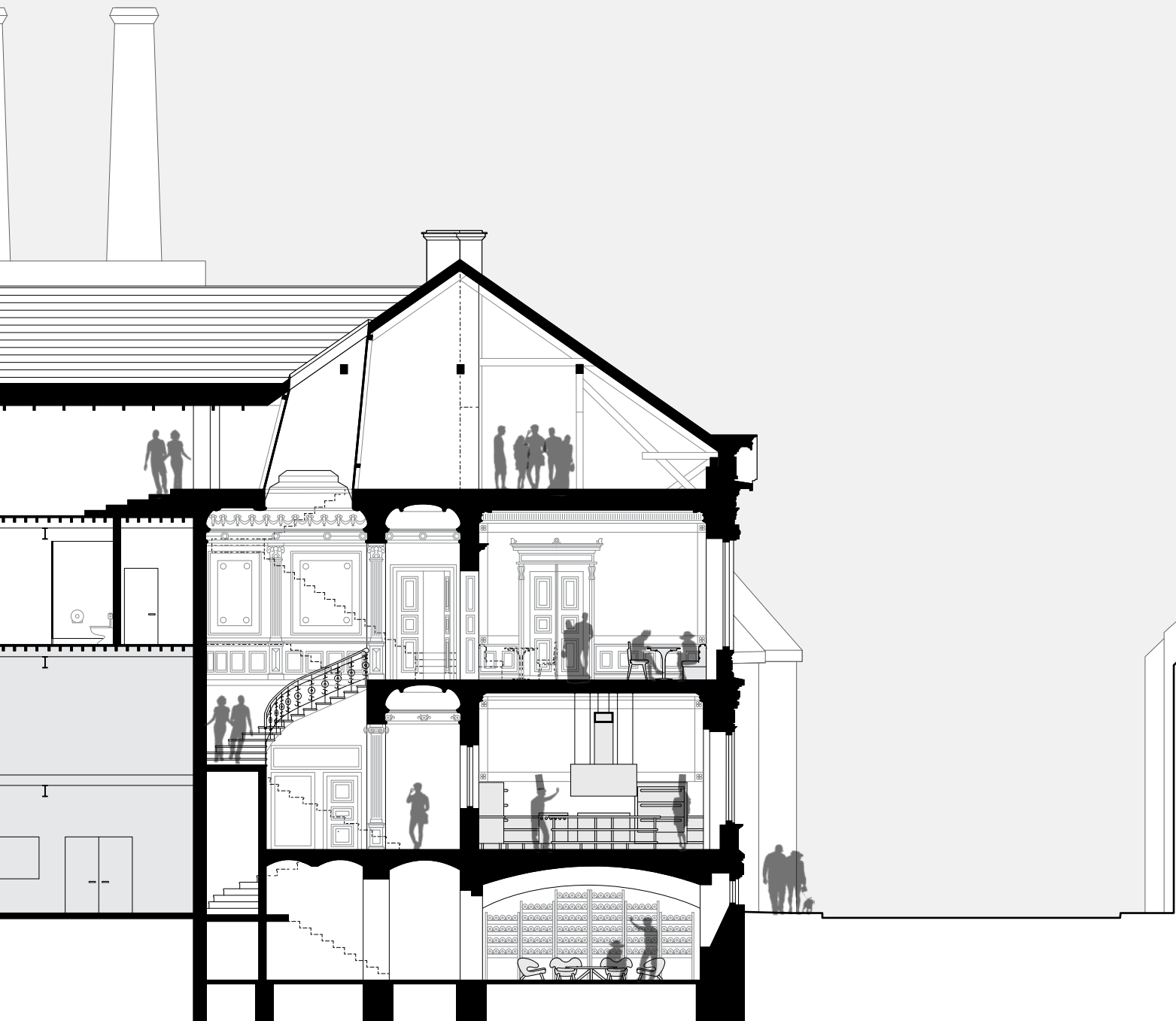
:12_grid











:elevation
:sections
:floor plans
:visualisations

typus: :

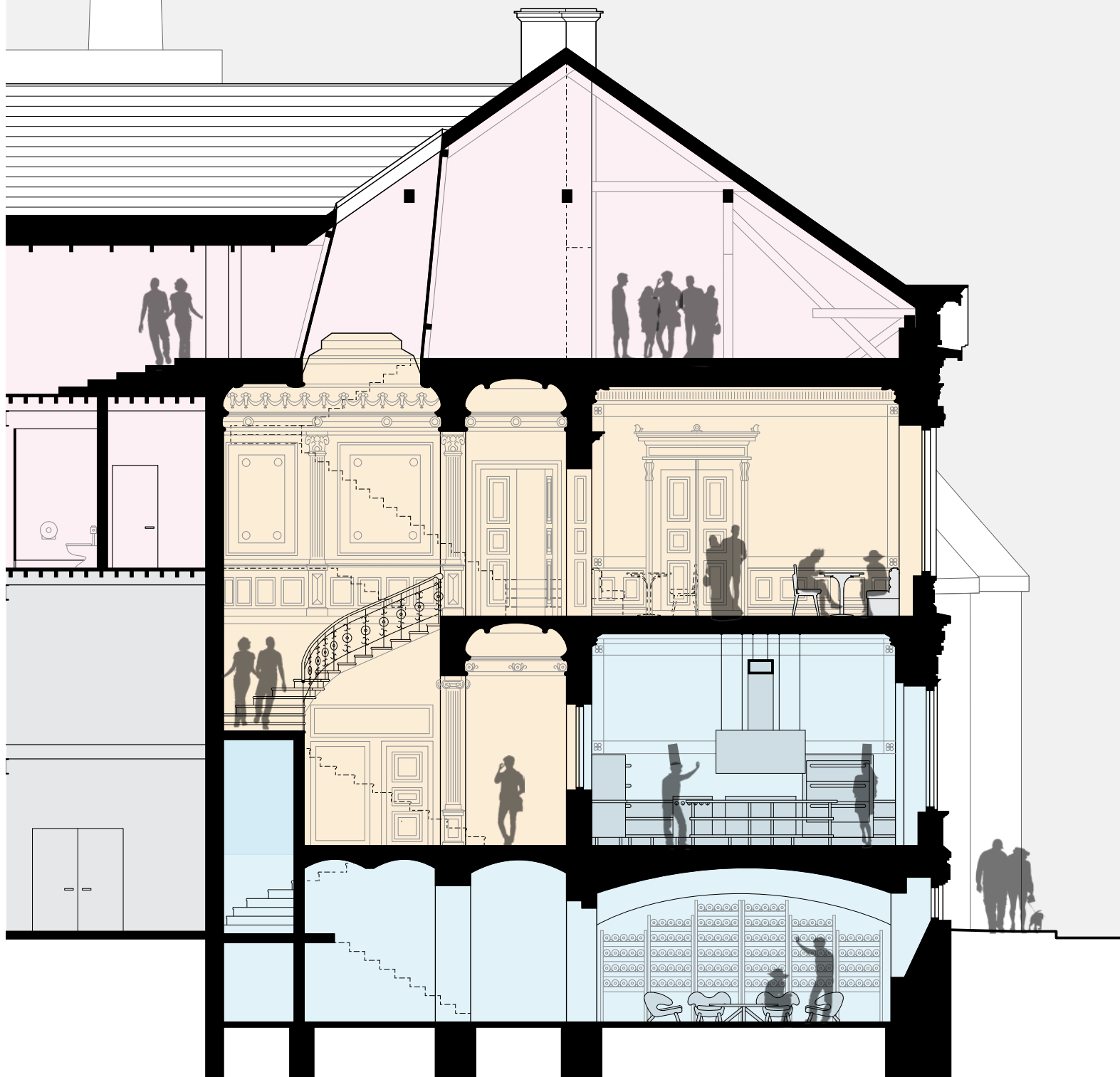
:section A-A

:pink_club support

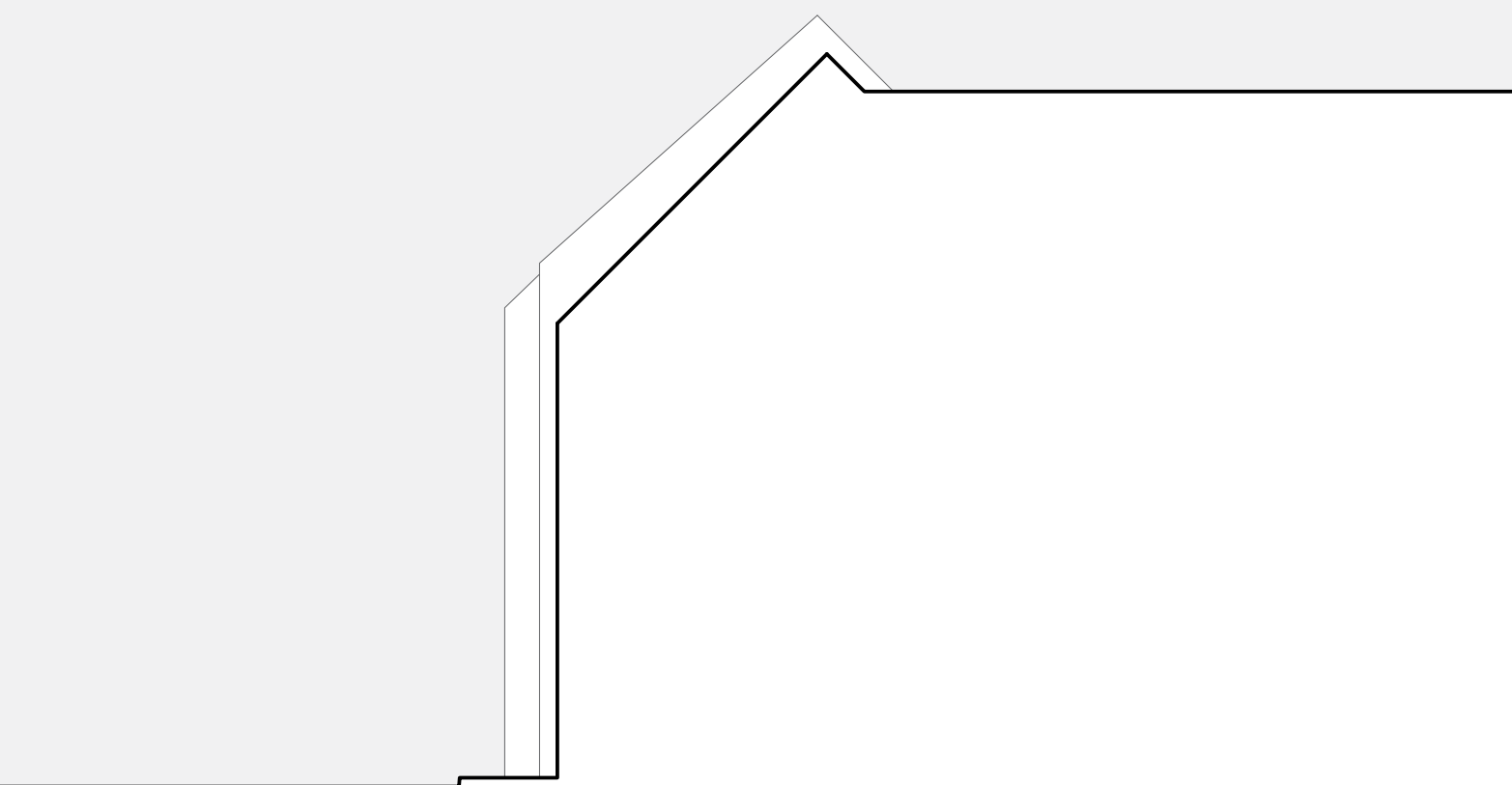
:orange_resturant

:blue_resturant support

:purple_club

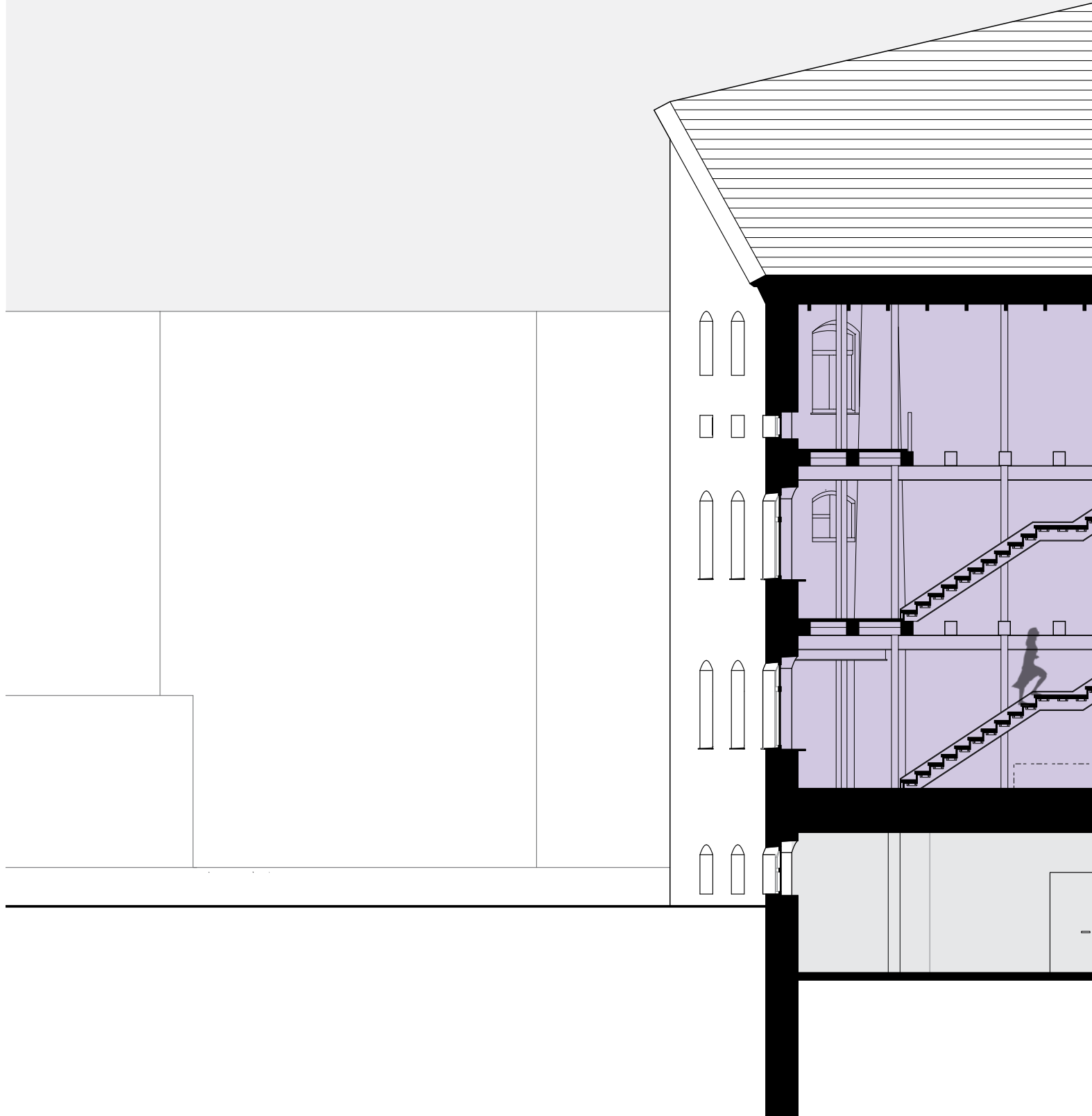


:front
house

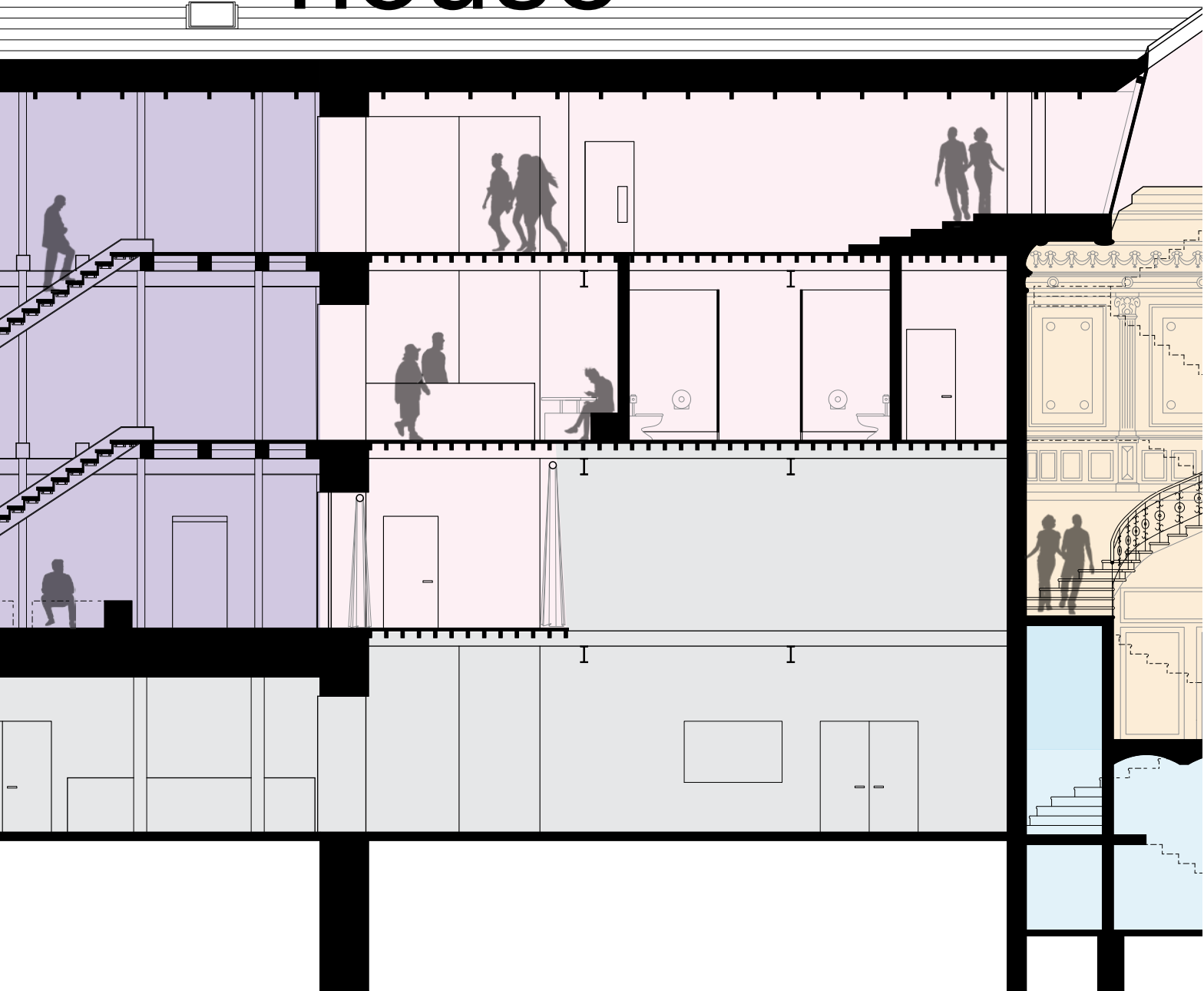


:section A-A

- :pink_club support
- :orange_resturant
- :blue_resturant support
- :purple_club



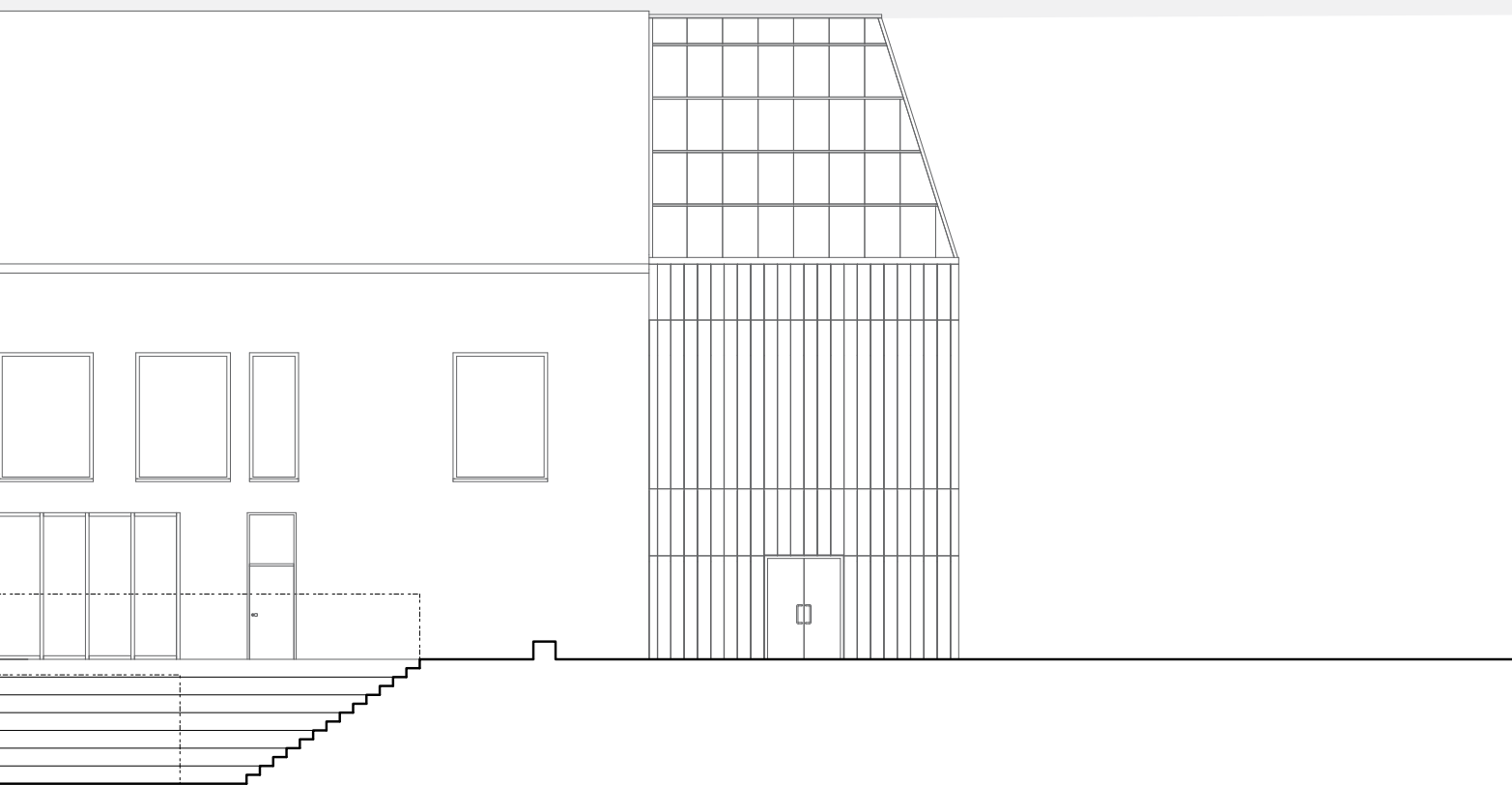
:back house

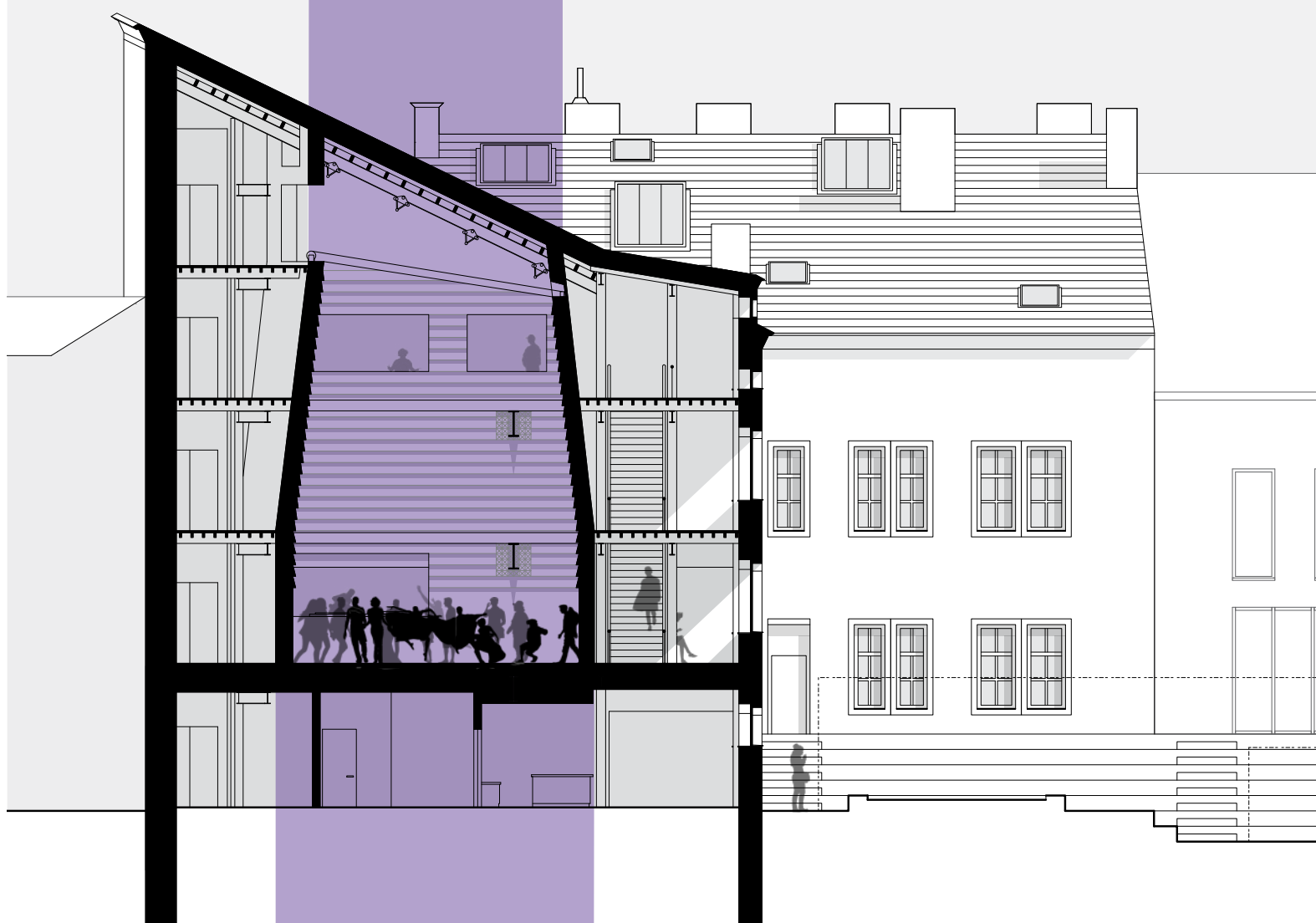




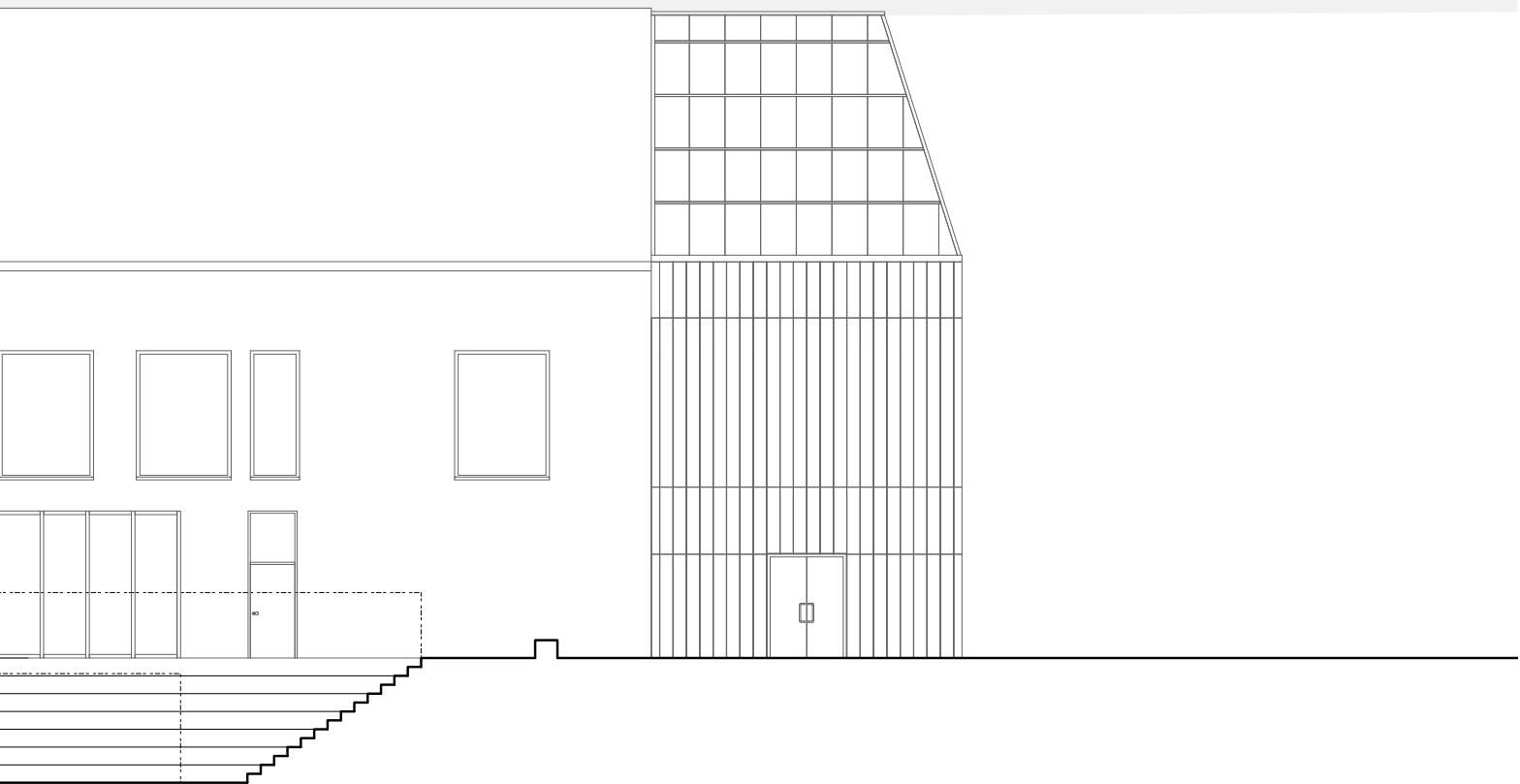
25 50 100

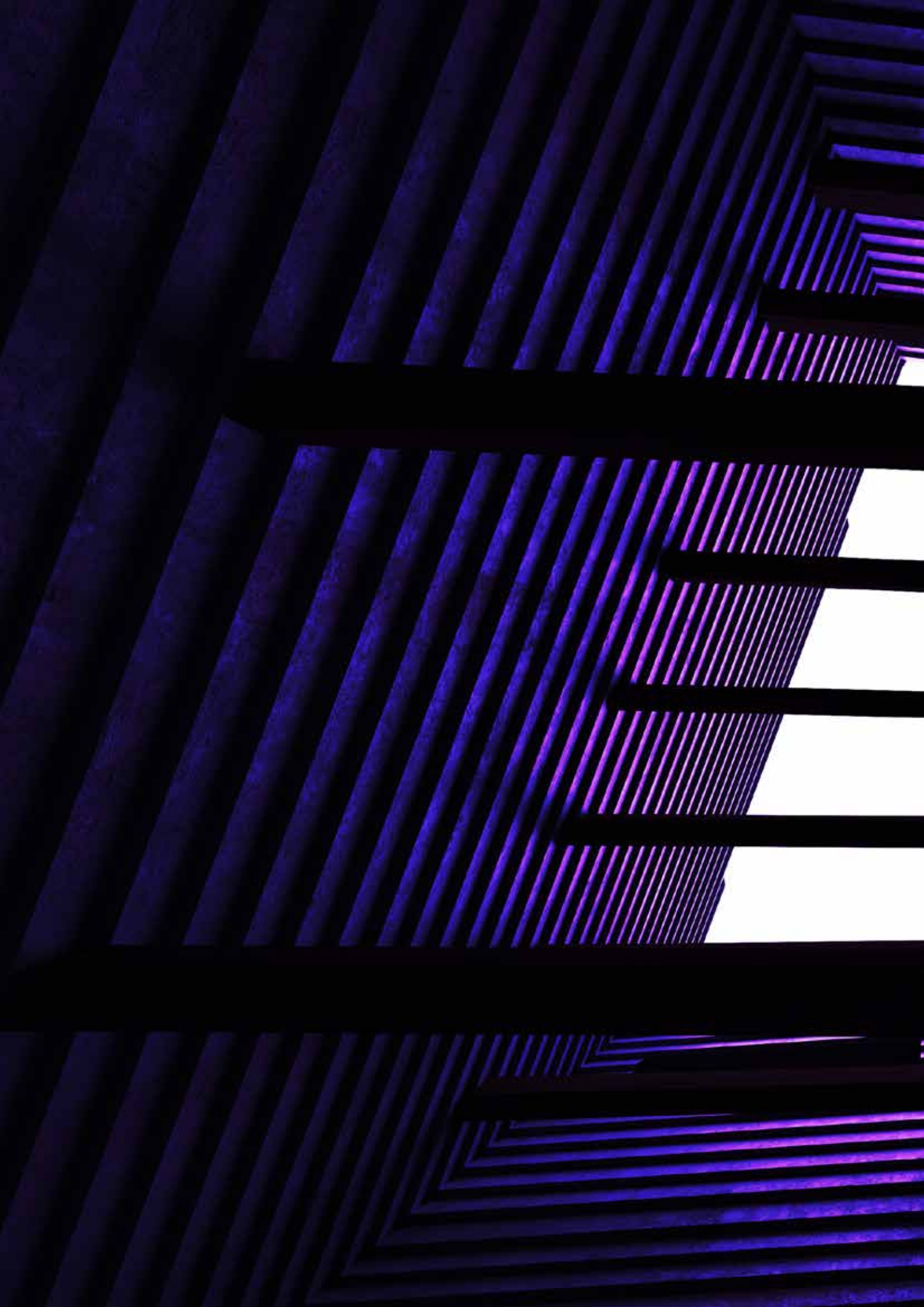
:back house





:back house











The image features a minimalist architectural elevation of a building facade. The upper portion is a light gray rectangle. Below it, a white horizontal band contains the text 'villa pneuma' in a bold, black, sans-serif font. To the left of the text, a simple line drawing of a building's corner is visible. Below the white band, the facade is divided into two horizontal sections. The upper section contains a series of eight vertical elements: seven windows with six panes each, and one central door with a single panel. The lower section contains a series of eight vertical elements: seven windows with six panes each, and one central door with a single panel. The entire drawing is composed of thin black lines on a white background.

: : villa pneuma

