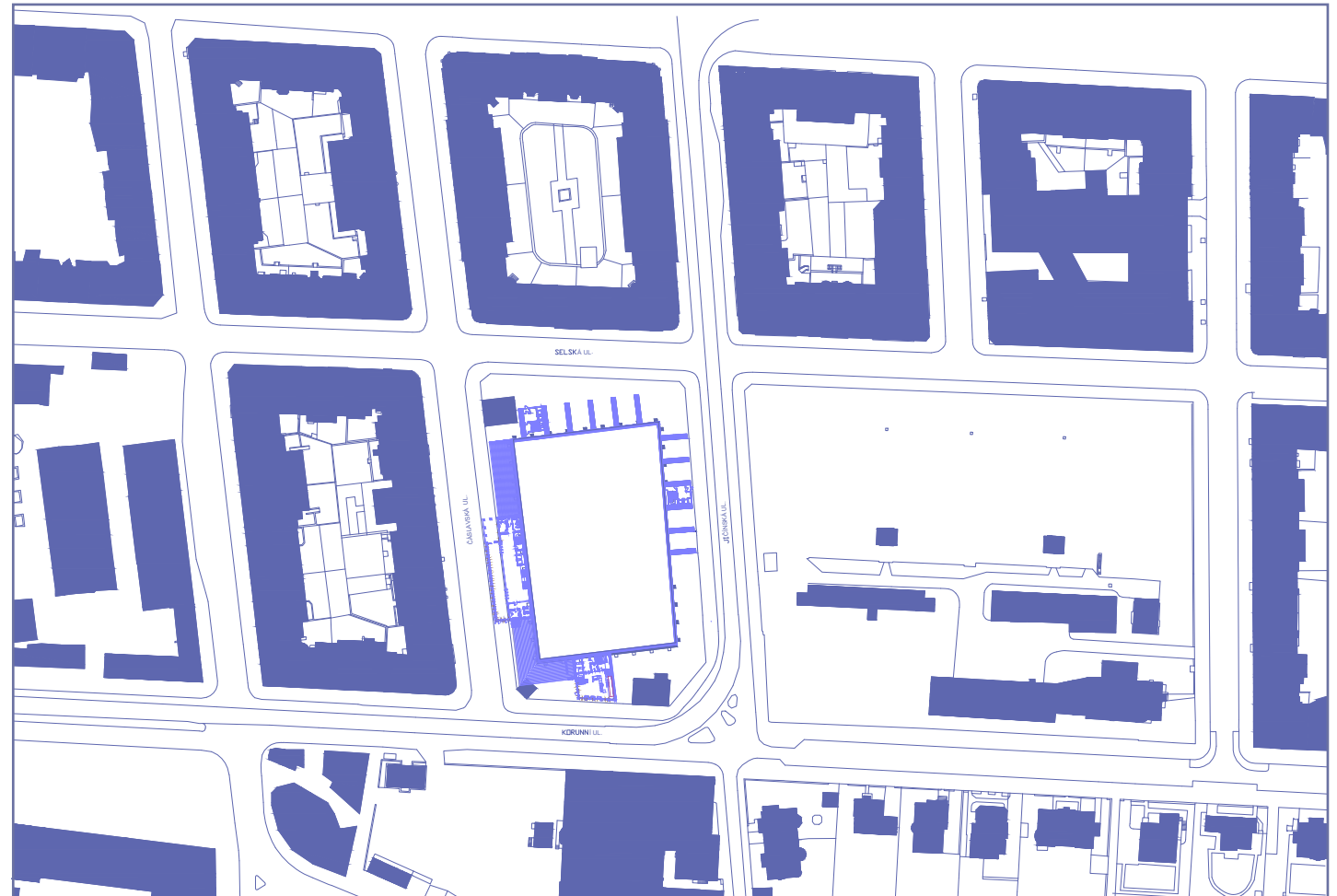


PROJECT CONTEXT

The architectural design of the film school and student living building project in Prague's Flora district blends modernity with historical context, respecting the 19th-century architectural fabric surrounding the site while introducing contemporary elements, responding to site constraints and circumstances.



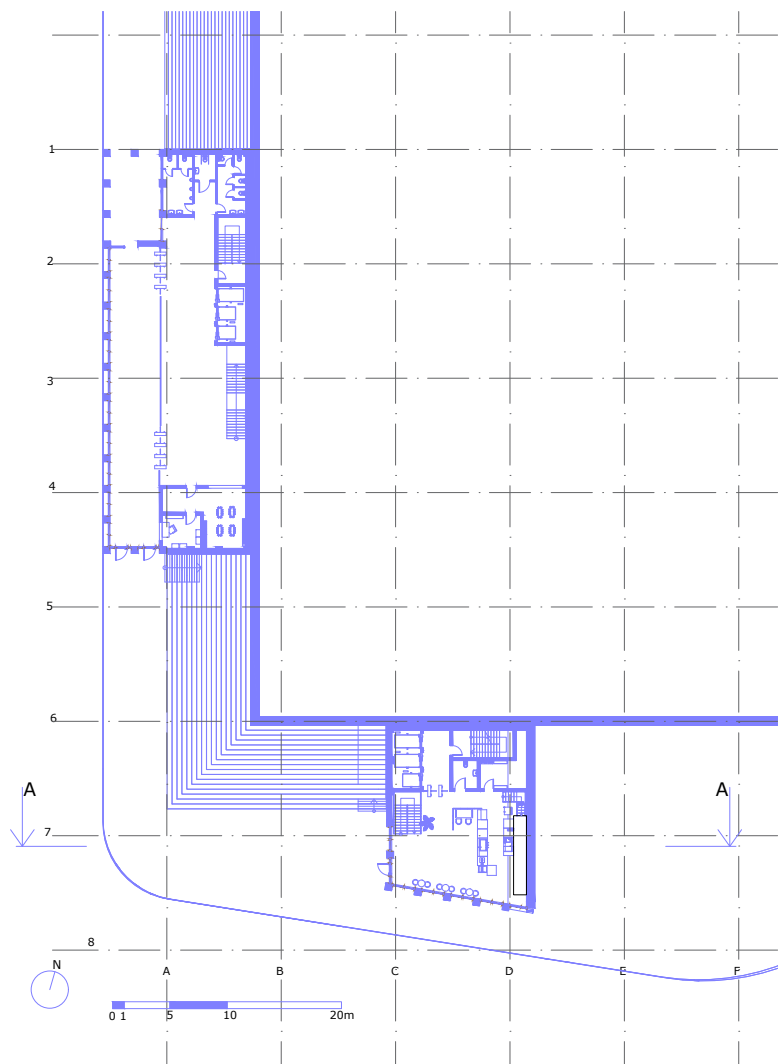
FILM SCHOOL



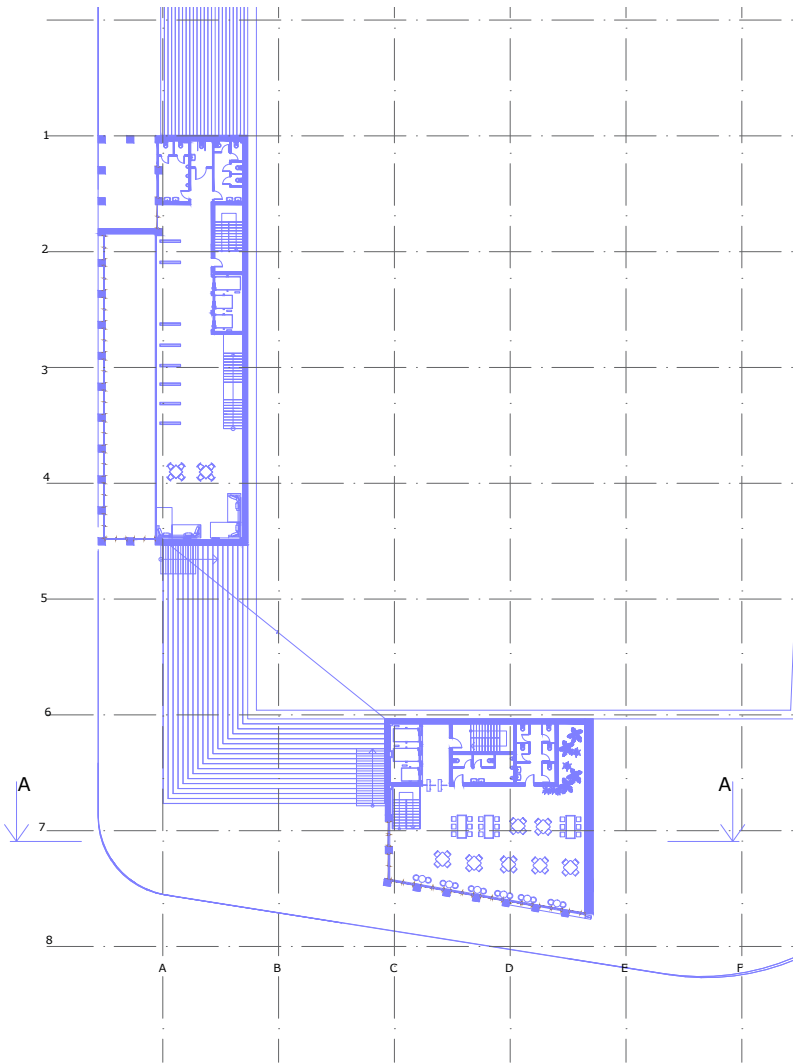
The project of a new film school located on the Prague flora responds to the constraints and circumstances of the site as it is located on a buried water reservoir and offers solutions that are non-standard for local development. A massive building with a metal skeleton inside stands on two support points that are supported on columns, the walls of which, together with the flying element of the console, resemble a camera lens for shooting films when leaving the Orionka bus stop pointing towards student dormitory.

FLOOR PLANS

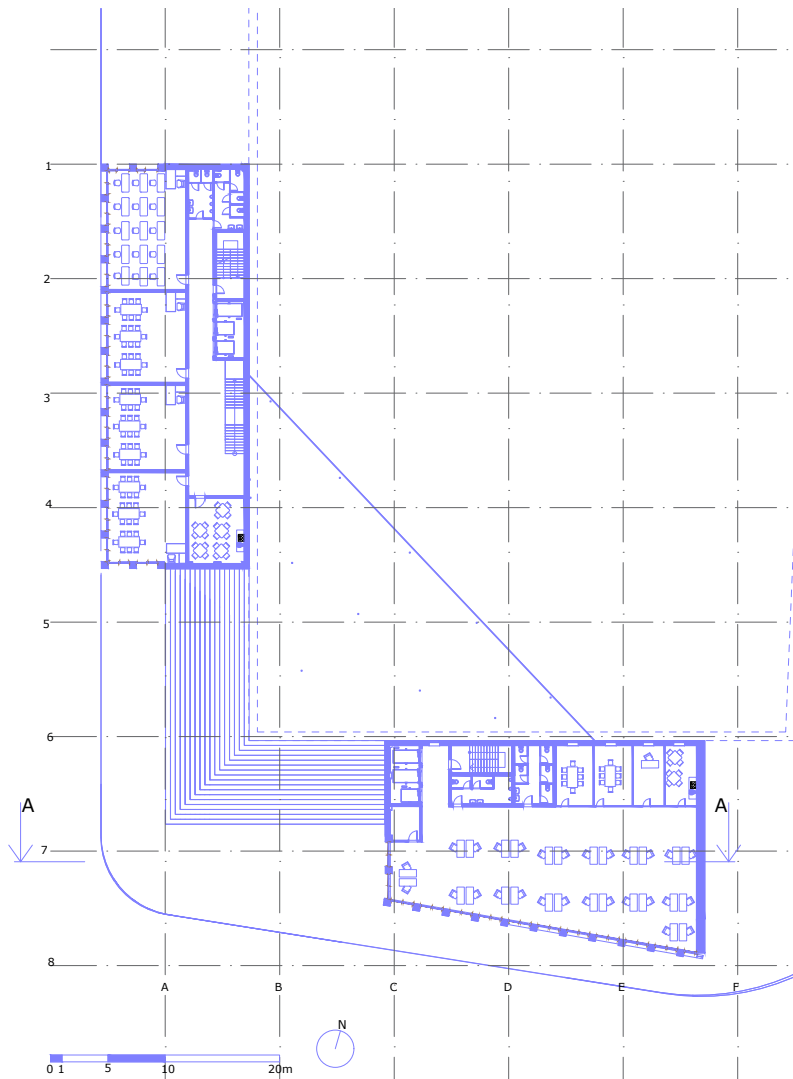
GROUND FLOOR



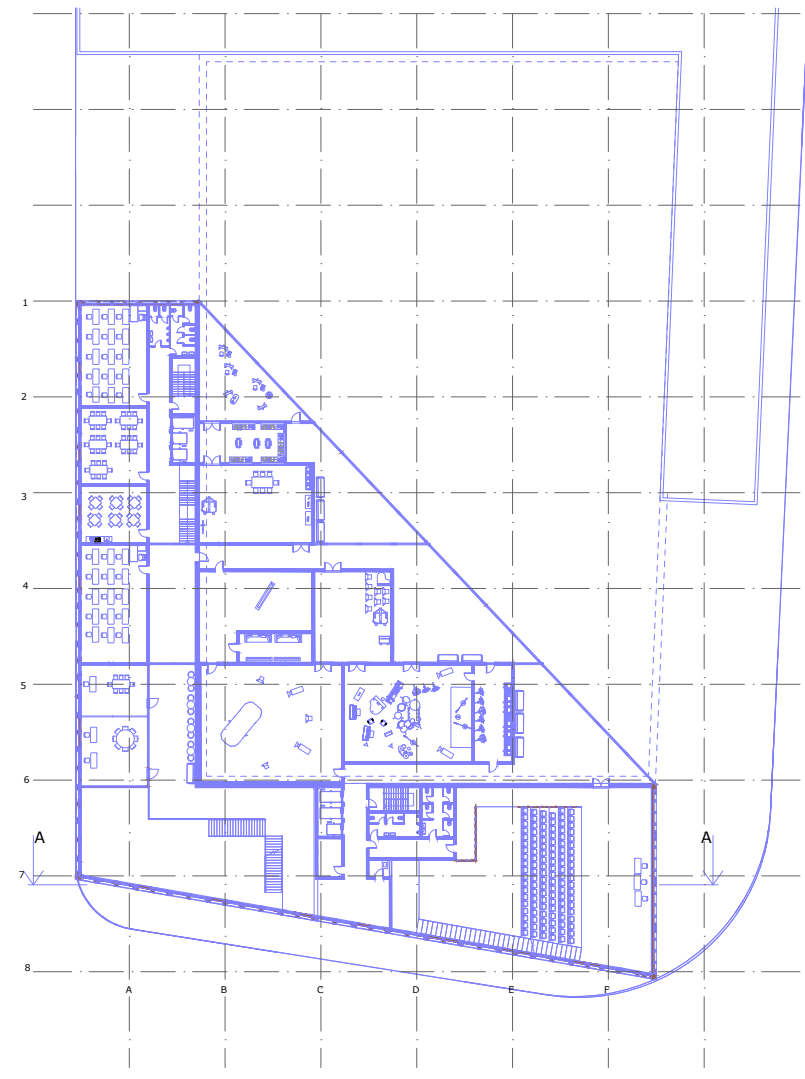
2nd FLOOR



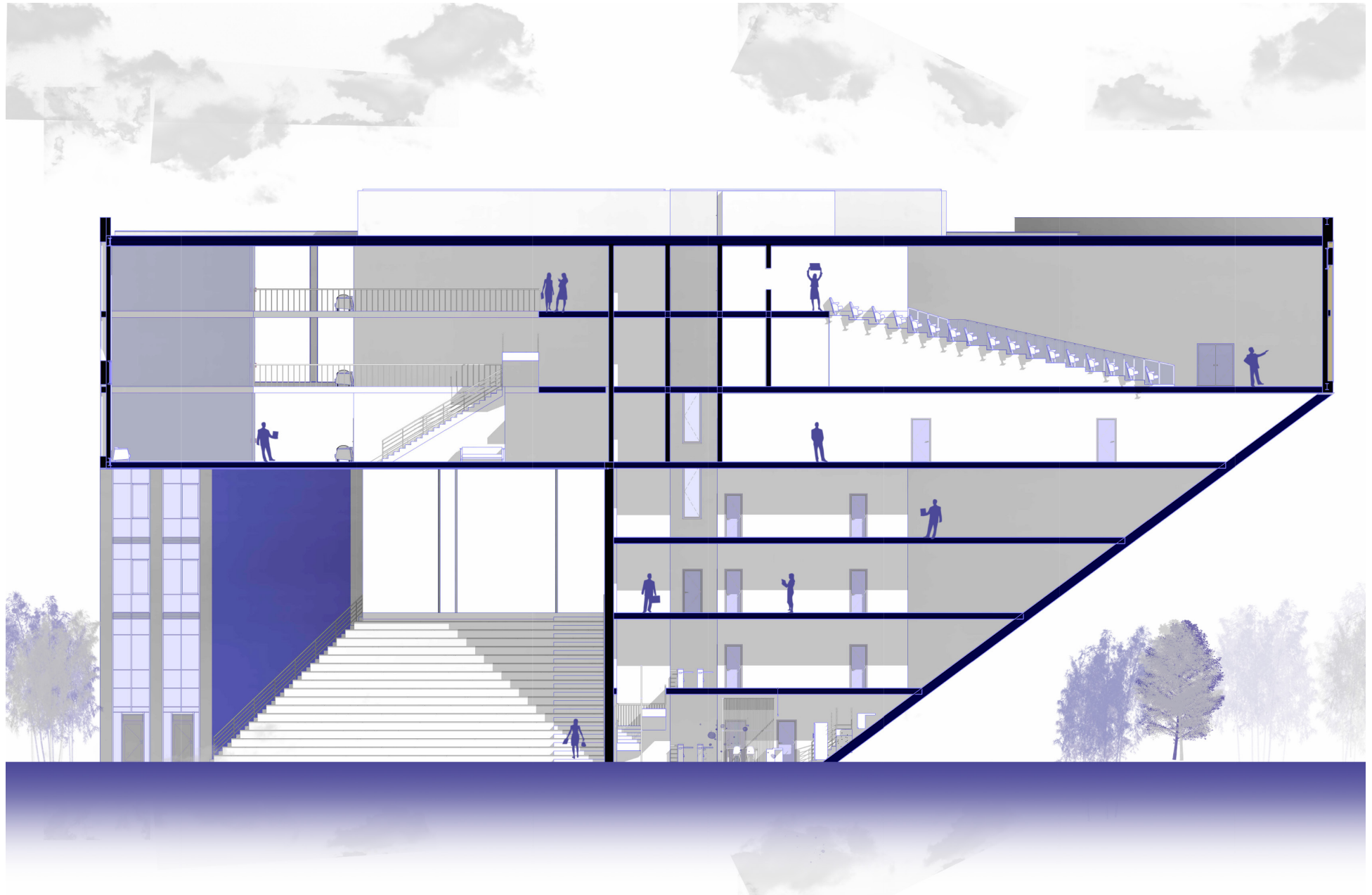
4th FLOOR



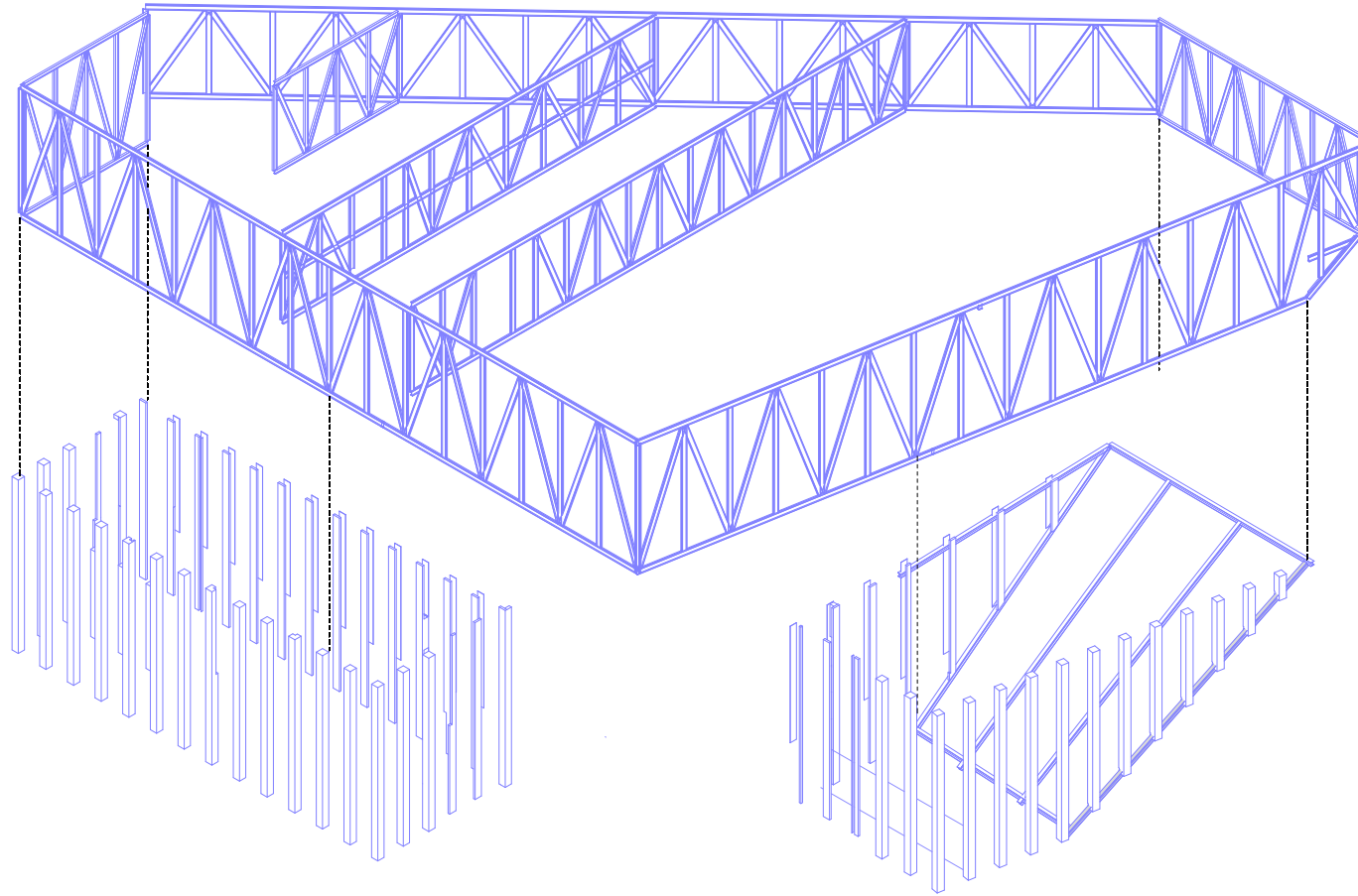
6th FLOOR



CUT SECTION A



STRUCTURAL SCHEME



The effect of flying was achieved thanks to the building's design consisting of a combination of iron columns at the bottom and a system of metal trusses at the top, forming a flying bridge at the front and a floating triangle at the rear of the building.



ATRIUM SPACE

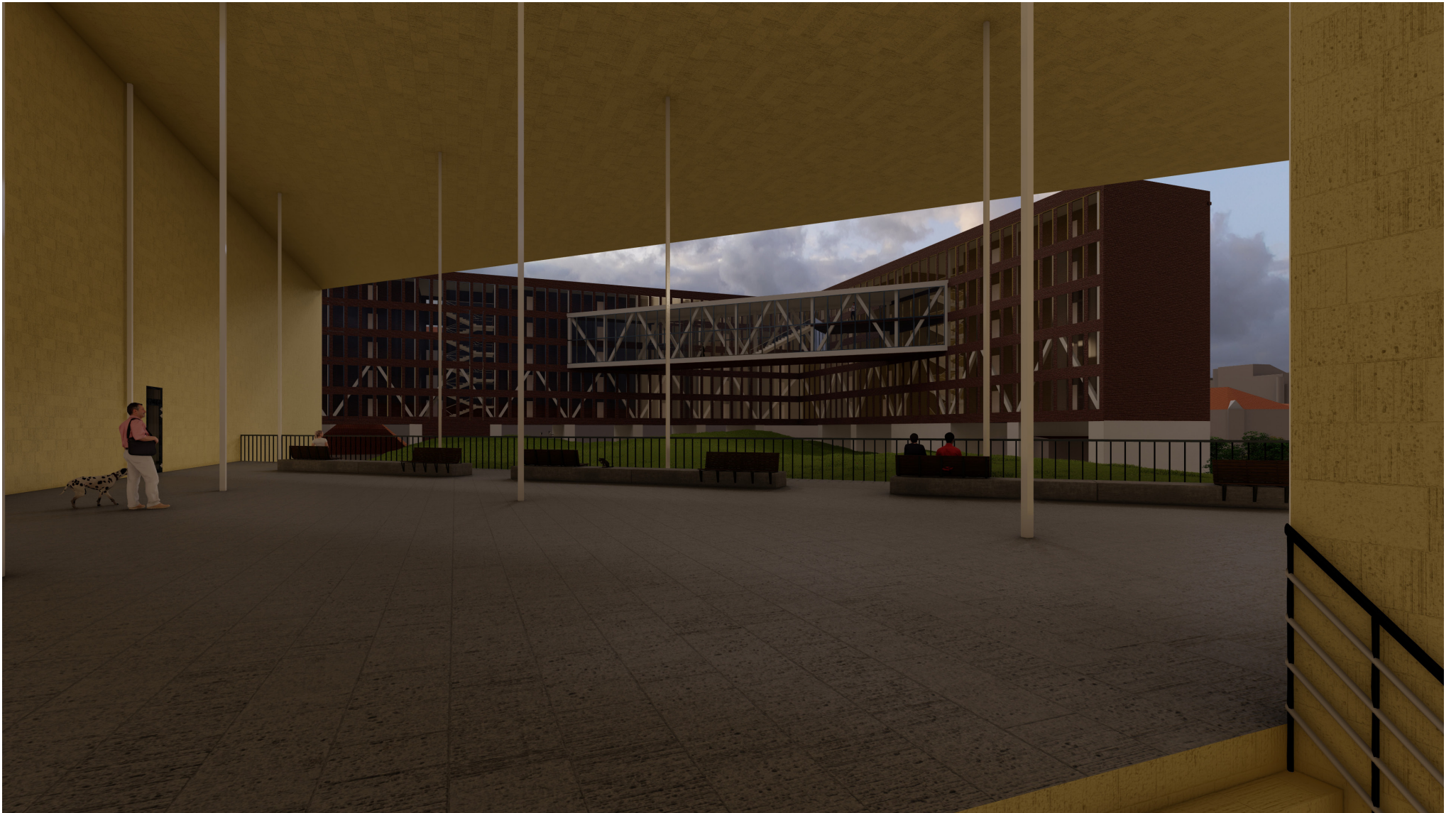
7



COFFEE SHOP COUNTER



SOUNDSTAGE PAVILION



UPPER SQUARE



FILM SCHOOL AND DORMITORY