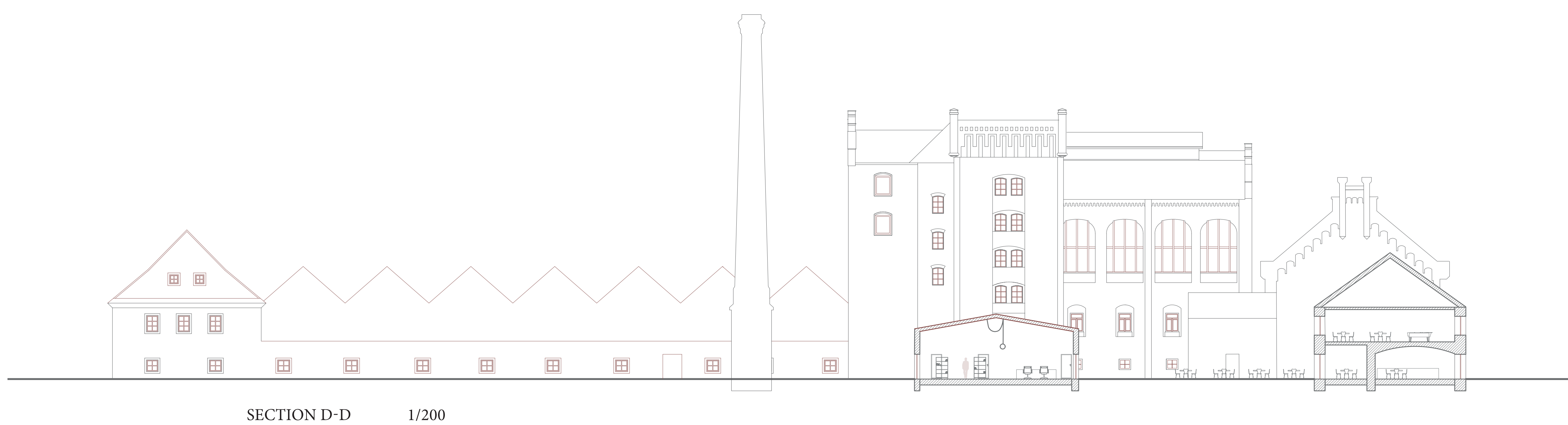
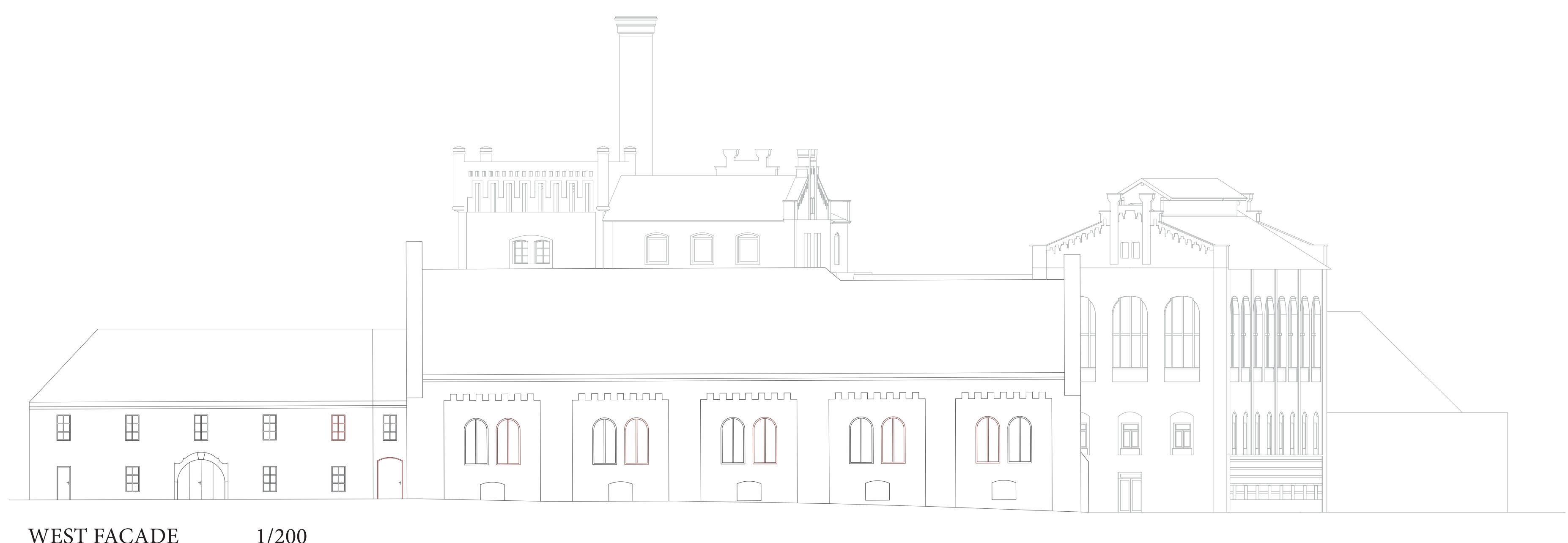
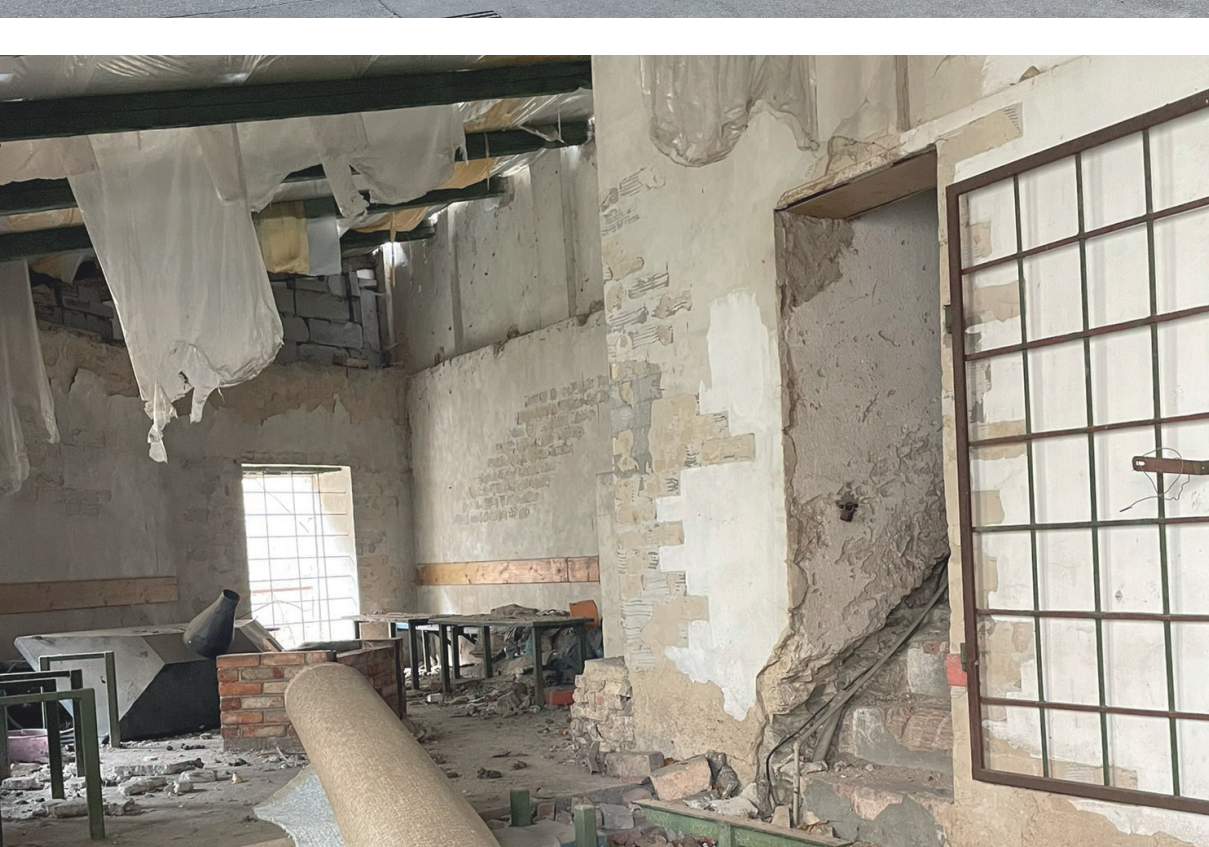




HELOISE ANDRE (FRANCE), ALEISTER HODSON (FRANCE), KATRINA STINA JESIENA (LATVIA), VIKTORIJA KOLOMAZNIKOVA (LATVIA), KANI SAID (FRANCE), SIMONE RICHICHI (ITALY)
SUMMER SEMESTER 2023/24



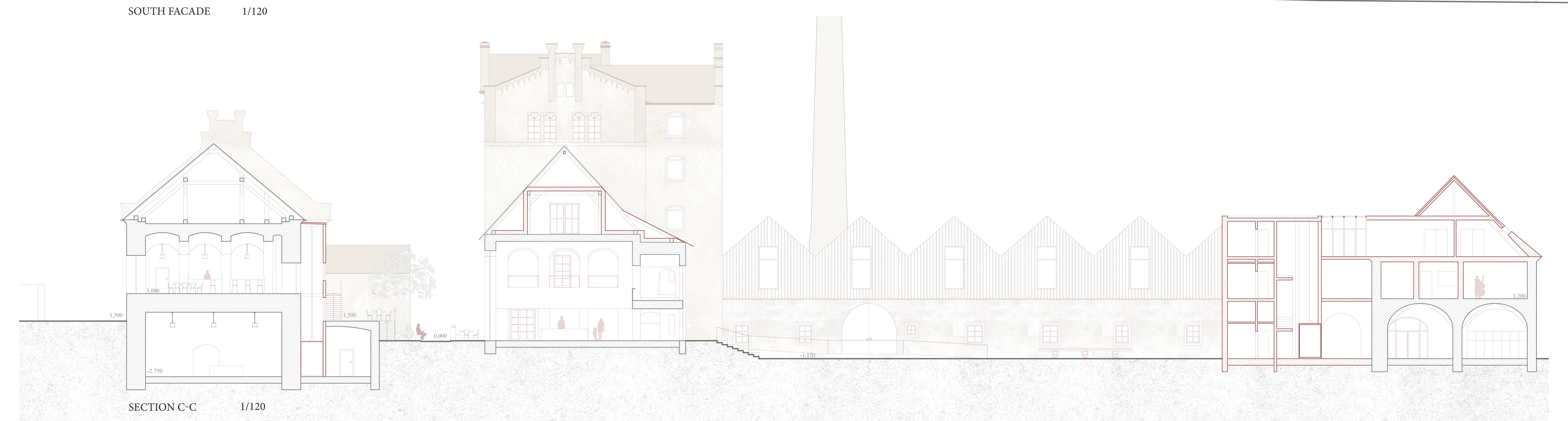
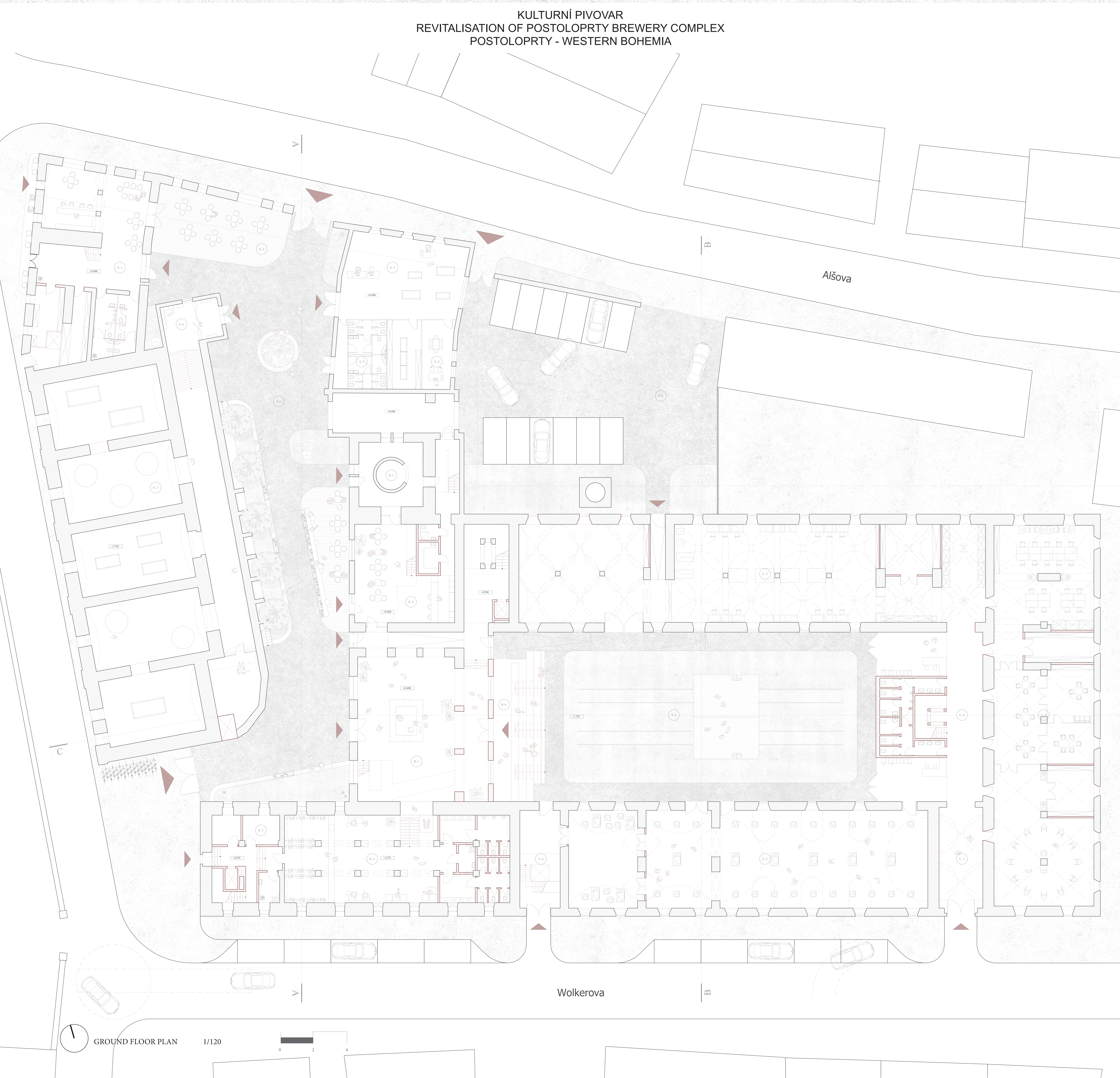
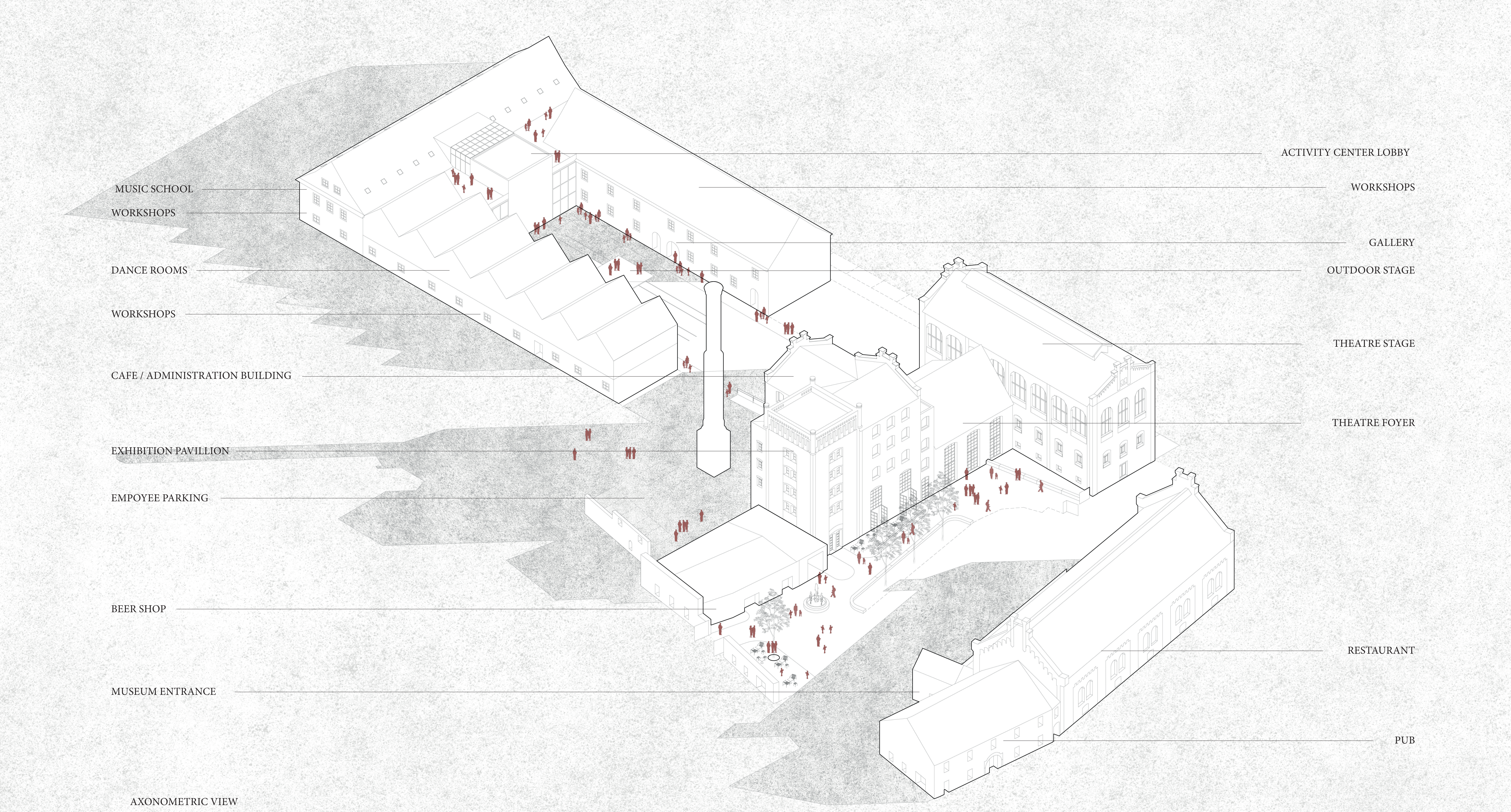
THE BREWERY COMPLEX IS ARTICULATED AROUND TWO MAIN COURTYARDS. THE FIRST ONE TO THE WEST IS LONG AND NARROW AND SURROUNDED ON EITHER SIDE BY TALL BUILDINGS WHICH ACCOMMODATE A RESTAURANT AND MUSEUM TO THE WEST AND A THEATER TO THE EAST. THE SECOND COURTYARD IS LARGER AND RECTANGULAR. IT IS COMPLETELY SURROUNDED BY FOUR WINGS, ONE BEING THE THEATER AND THE OTHERS COMPOSING AN ACTIVITY CENTER.

ON THE CORNER OF THE MAIN SQUARE IS A PUB WHICH WAS RESTORED AND EXTENDED. IT IS CONNECTED TO A MUSEUM CENTERED AROUND THE HISTORY AND THE PRODUCTION OF THE BREWERY. ABOVE IT SITS A RESTAURANT WITH LARGE VAULTED ROOMS. THE KITCHEN IS CONNECTED TO THE PUB TO RESOLVE ACCESSIBILITY ISSUES. A LIFT AND EXTENSION WAS BUILT AROUND THE COURTYARD. IT IS ALSO A RECEPTION BUILDING AND A SHOP WITH SOME NEW PUBLIC SPACE EQUIPMENT.

THE GOAL BEHIND INTRODUCING A THEATER TO THE COMPLEX IS TO CREATE A LOCAL TOURISM DESTINATION. THE THEATER STAGE IS INTRODUCED IN THE BIGGEST SPACE OF THE BUILDING, WITH AN ADDITION OF TRANSFORMABLE STAGE AND AUDIENCE PARTS. MAIN INTERVENTIONS INCLUDE A RECONSTRUCTION OF THE CENTRAL BUILDING, IMPLEMENTING HISTORICAL WINDOWS AND REMOVING A SEPARATION FLOOR. ACCESSIBILITY ISSUES HAVE BEEN SOLVED WITHIN BOTH VERTICAL AND HORIZONTAL CONNECTIONS. ONE OF THE COURTYARD CAN ALSO ACCOMMODATE THEATER PRODUCTION WITH A MOVABLE STAGE SET ON RAILS.

THE ACTIVITY CENTER OFFERS VARIOUS ARTISTIC CLASSES AND WORKSHOPS FOR THE YOUTH AND ADULTS IN THE REGION. IT CAN ALSO ACCOMMODATE SPECIAL EVENTS LINKED TO THE CULTURAL COMPLEX OR TO THE VARIOUS ART CLASSES. A NEW VOLUME WAS INTRODUCED IN THE COURTYARD TO ACCOMMODATE A LOBBY AND TOILETS. THE NORTHERN WING, HEAVILY DAMAGED, WAS REBUILT WITH A NEW STRUCTURE OFFERING LARGE LUMINOUS SPACES. THE REST OF THE SPACES WERE RESTORED.







DESIGN STUDIO EFLER
DEPARTMENT OF ARCHITECTURAL CONSERVATION
FACULTY OF ARCHITECTURE, CTU IN PRAGUE

