

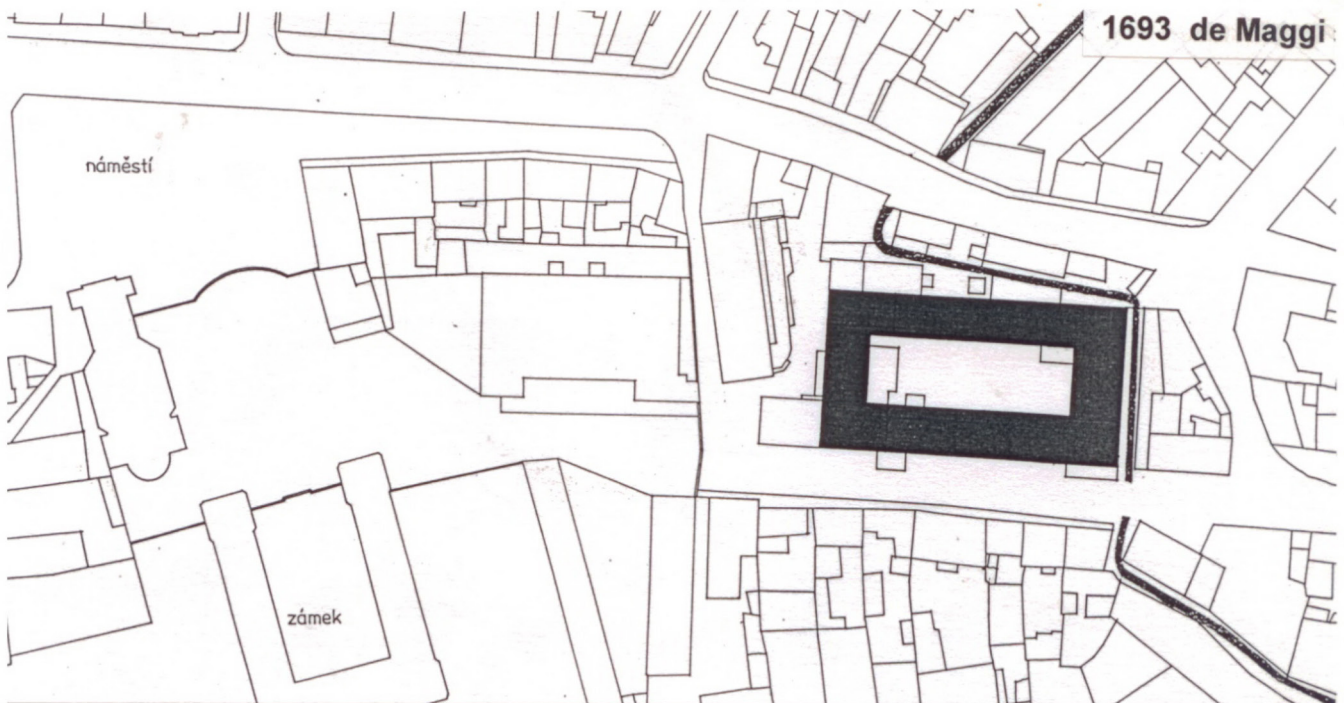


SIMONE RICHICHI  
ALEISTER HODSON

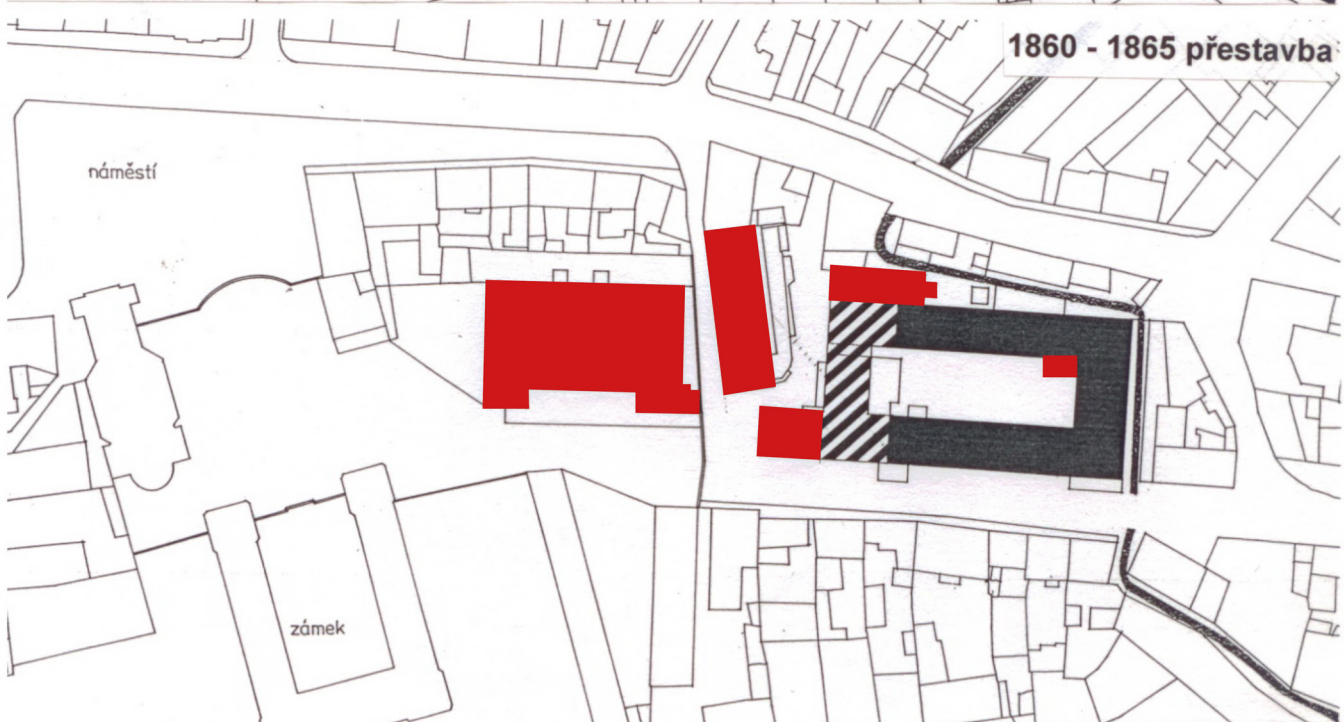
France - Italy  
Kulturni Pivovar  
brewery  
postoloprty  
western bohemia  
summer semester 2023/2024

design studio efler  
department of architectural conservation fa ctu  
in prague

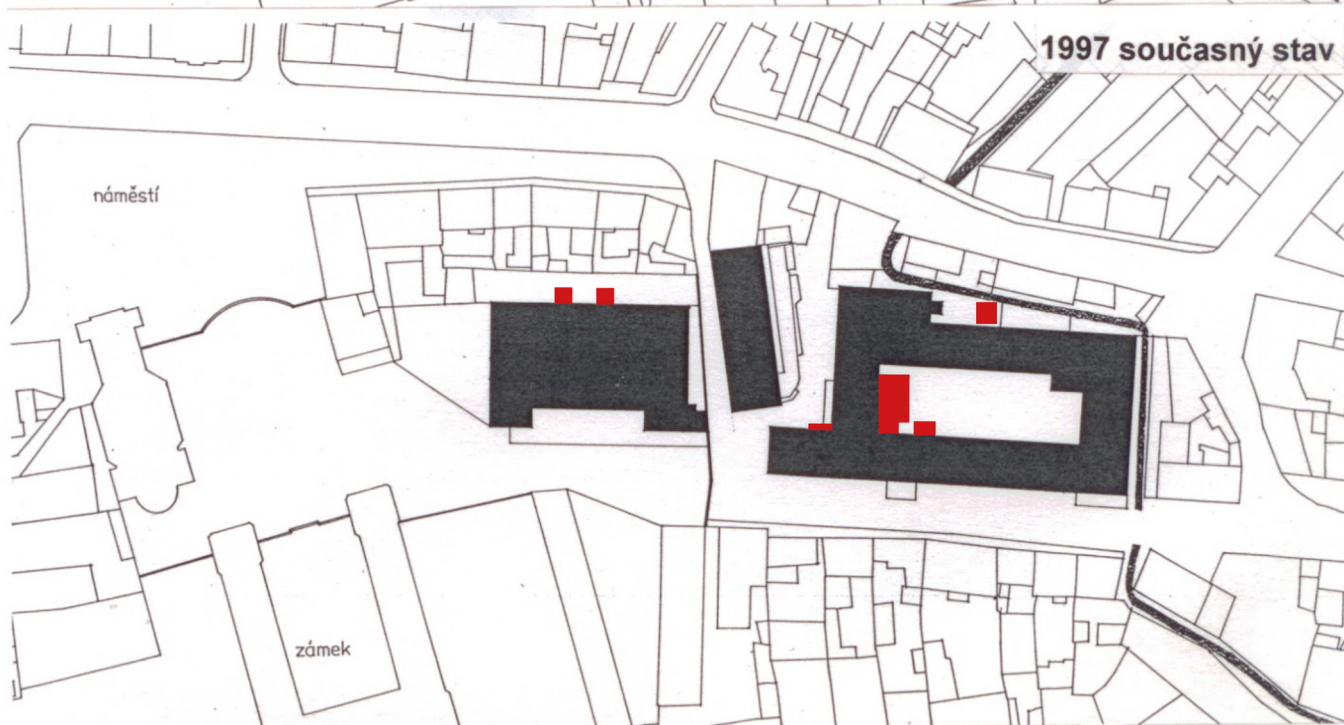
1693 de Maggi



1860 - 1865 přestavba

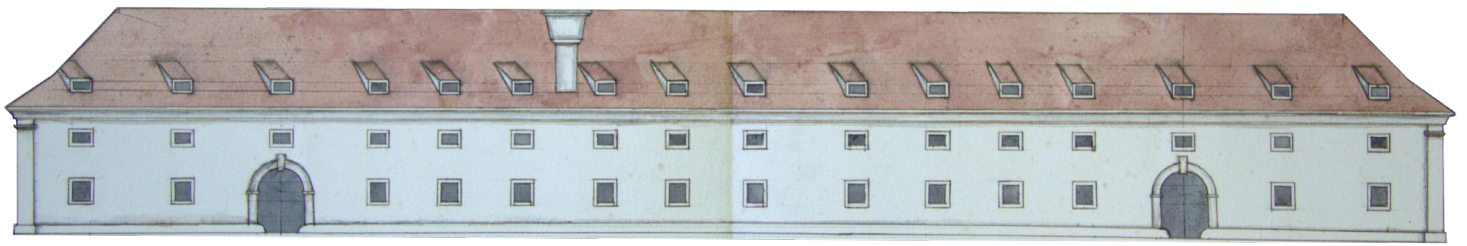


1997 současný stav



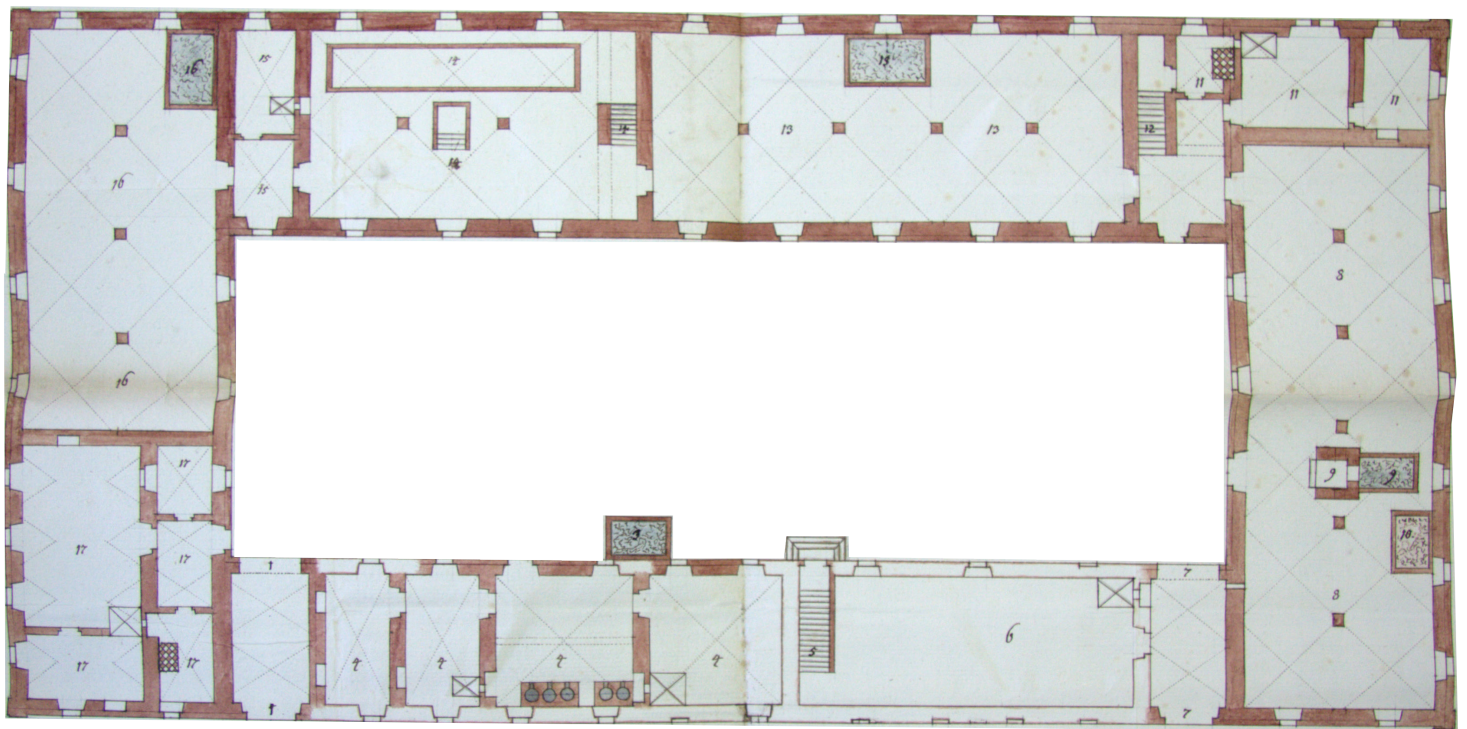
Stavební etapy





SOUTH FACADE

Giacomo A. de Maggi 17th century



GROUND FLOOR

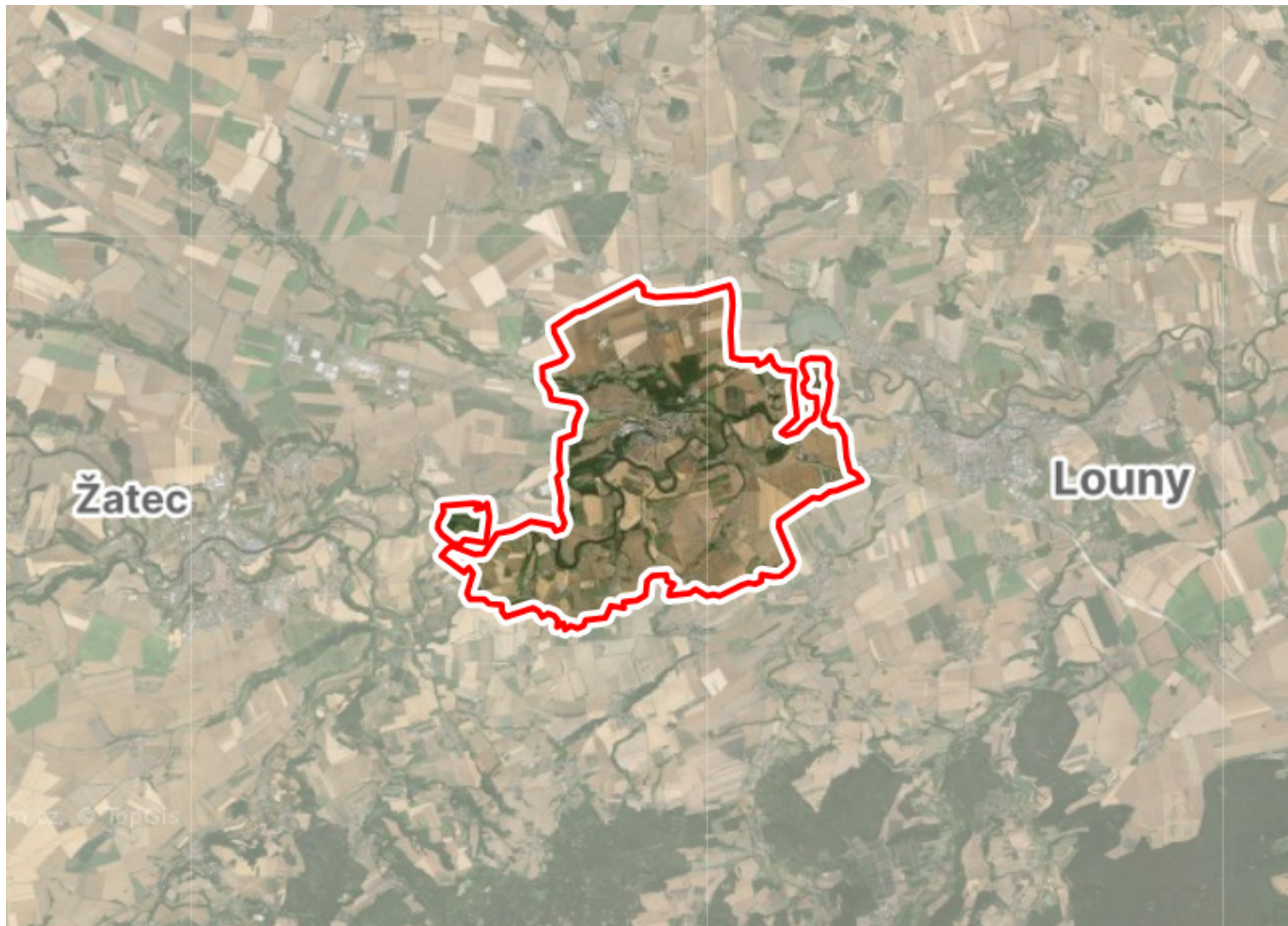
Giacomo A. de Maggi 17th century



## History

The Pivovar Postoloprty is a closed brewery in Postoloprty in the district of Louny. Due to its architectural beauty and preserved production technology, it is protected as a cultural monument. The Postoloprty brewery was built in 1693 by Ferdinand Vilem Eusebius from Schwarzenberg according to the project of the architect Giacomo A. de Maggi. Then in the years 1860-1870 the brewery was modernized according to the plans of Lovosice construction office. Modernization increased production, which ended after the Second World War. After the end of the production the building fell in decay until 1999, when it was bought by a new owner who started its reconstruction. Finally, in 2011 the brewery was damaged by a fire which destroyed the roof of the seventeenth century core.









## POSTLOPRTY URBANISM AND COMPLEXES CONCEPT

The city of Postoloprty is located between two important and beautiful cities, however its attractiveness is very low. Indeed, the demography is characterized by an increase of seniors.

On the other hand, Postoloprty has three huge lost complexes that could become new landmarks and centers to attract tourism, create work and consequently revitalize the whole city.

The idea at the base of this revitalization was to develop a place that could host activities that could attract young people and create social cohesion between them and the place. In addition, we wanted these activities to be able to attract local and not local tourism.

The place selected between the castle, the farmyard and the brewery was the latter.

## DESCRIPTION OF THE COMPLEX

The cores of the complex are two main courtyards. The first on the west is long and narrow. The second on the east is bigger and rectangular.

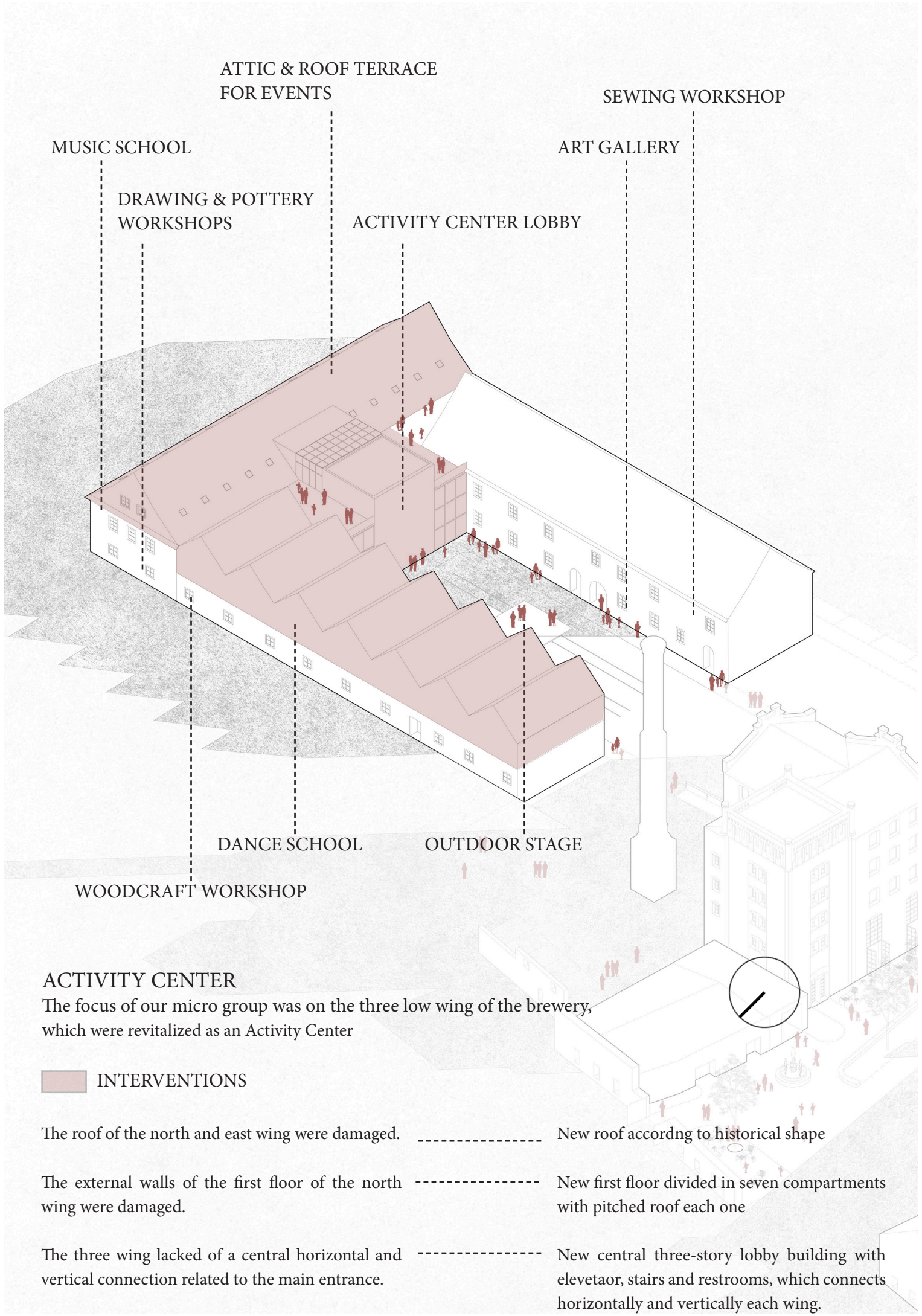
The rectangular courtyard is surrounded by four wings, one for each side.

The wing on the west is taller and connects the two courtyards. The shape of this latter wing presents three main volumes. The first volume on the south is a taller extension of the south wing. Then, the second has the same height as the first volume and has a tower with flat roof. Finally, the third volume is lower and in the middle of the previous ones. On the other side of the narrow courtyard there are two buildings which shape follow the one of courtyard. The first is taller and longer. The second one on the north and connected with the previous is smaller and shorter and faces the main square.

## GENERAL ANALYSIS OF DAMAGES

Shacks exploited the exterior load bearing walls of every building as structural support. Then the roofs of the north and east wing around the bigger courtyard were seriously damaged. A new concrete addition was present at the base of the tower belonging to the tall west wing. Finally, each courtyard was in very bad condition as recent owners used them as storage areas for building materials





### ACTIVITY CENTER

The focus of our micro group was on the three low wing of the brewery, which were revitalized as an Activity Center

#### INTERVENTIONS

The roof of the north and east wing were damaged.

----- New roof according to historical shape

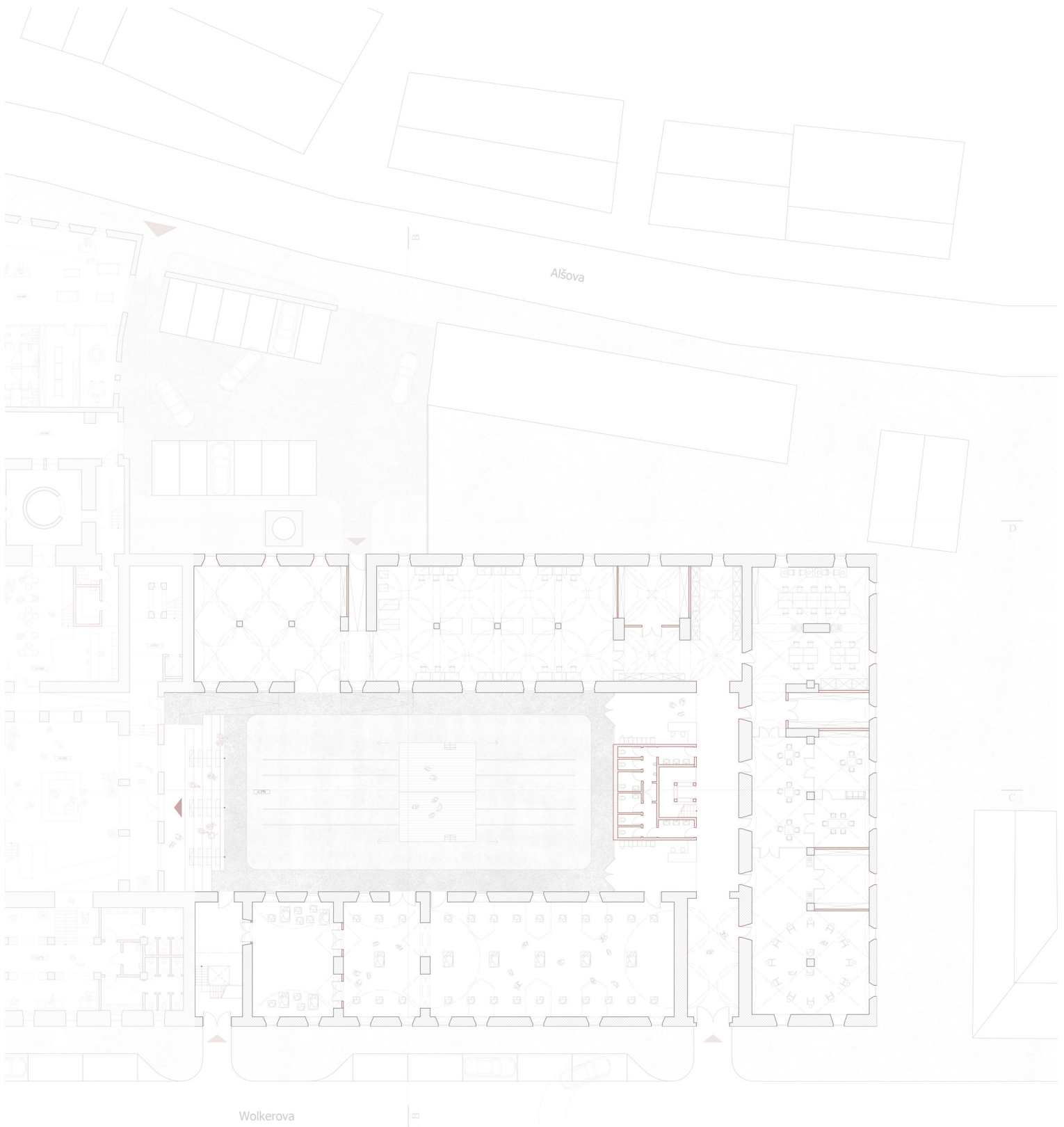
The external walls of the first floor of the north wing were damaged.

----- New first floor divided in seven compartments with pitched roof each one

The three wing lacked of a central horizontal and vertical connection related to the main entrance.

----- New central three-story lobby building with elevetaor, stairs and restrooms, which connects horizontally and vertically each wing.



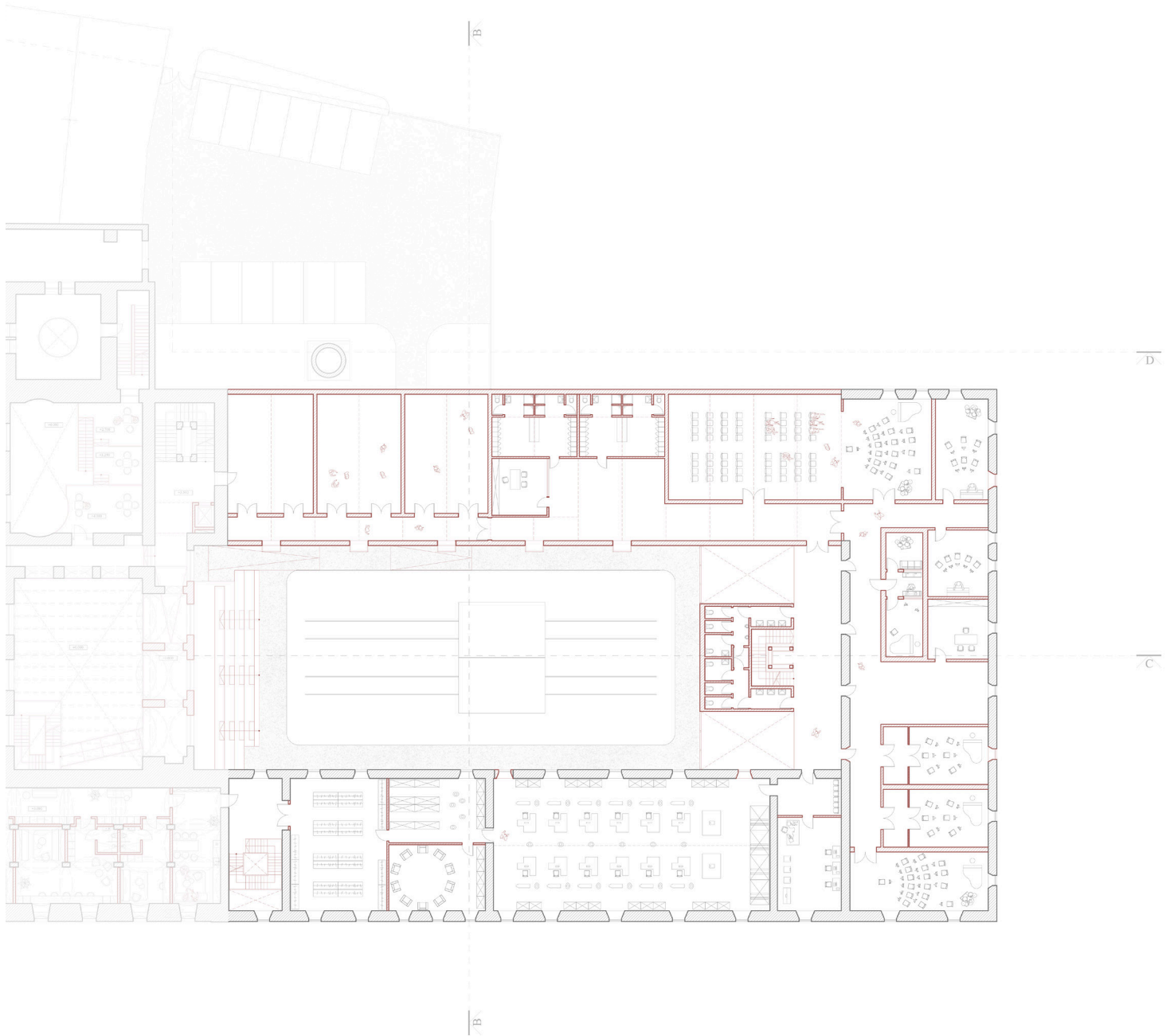


GROUND FLOOR

1:500







1ST FLOOR

1:500







2ND FLOOR

1:500







SECTION CC'

1:500



SOUTH FACADE

1:500



NORTH FACADE

1:500



SECTION BB'

1:500





## RECTANGULAR COURTYARD VIEW EAST WING

The new floor of the north wing is recognizable from the existing structure thanks to the façade material in metal sheets.

The double height lobby spaces are visible thanks to the two-story glass wall, that also creates a reaction to existing structure, which is also visible behind the glass.

Furthermore, the big central volume of the stairs, elevators and restrooms is isolated from the existing structures and also its surface without openings is perfect to place temporary art works.







## RECTANGULAR COURTYARD VIEW WEST WING

Along each façade that overlooks the courtyard there is a path. However, along the whole length of the west wing there is an alternation of stairs and rows of seats that allow people to relax and to watch shows on the movable stage located in the middle of the courtyard.







## CENTRAL LOBBY BUILDING INTERIOR

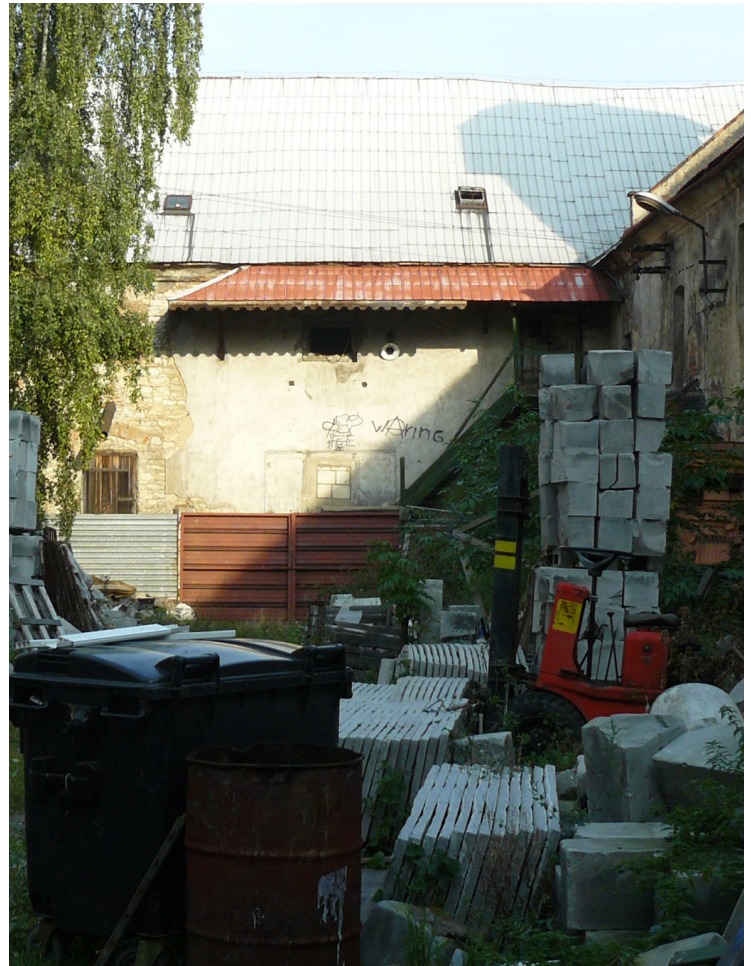
The distance between the main stairs and main entrance plus the lack of central connection to each wing at every floor caused a slow and uncomfortable circulation.

For this very reason was decided to destroy the existing stairs and create a new three-story building with stairs, an elevator, space to connect and welcome, and restrooms.

On the ground floor we have restrooms and double height lobby spaces for museums and workshops.

On the first floor we have a mezzanine that connects the three wings and overlooks the lobby spaces in the ground floor.

The second floor gives access to the roof terrace and to the new attic of the east wing, which is a perfect space for events.







## NORTH WING ADDITION INTERIOR

The roof and walls on the first floor of this wing were seriously damaged.

Therefore, the whole floor was reconstructed with modern material but with shape and openings inspired by industrial style.

This new floor was divided into seven compartments with pitched roof for each one. In these huge compartments was possible to realize the dance halls of the dancing school.







## EAST WING INTERIOR

The roof of this wing was destroyed. However, the vaulted space of the whole ground floor was perfectly preserved.

Therefore, to preserve and enhance the beauty of cross vaults it was decided to place activities that needed this kind of space, which are drawing and pottery. Furthermore, the only partition walls built up are in materials that keep visible the vaults and their continuity in the space. These materials are glass and wood.







## SOUTH WING INTERIOR

The ground floor of the south wing was characterized mainly by three vaulted spaces.

Two smaller spaces with cross barrel vaults to the main direction of the wing.

One bigger space with a barrel vault following the direction of the wing, which was enhanced and revitalized by placing an art gallery.

