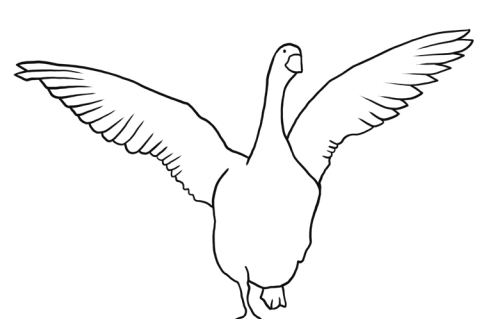
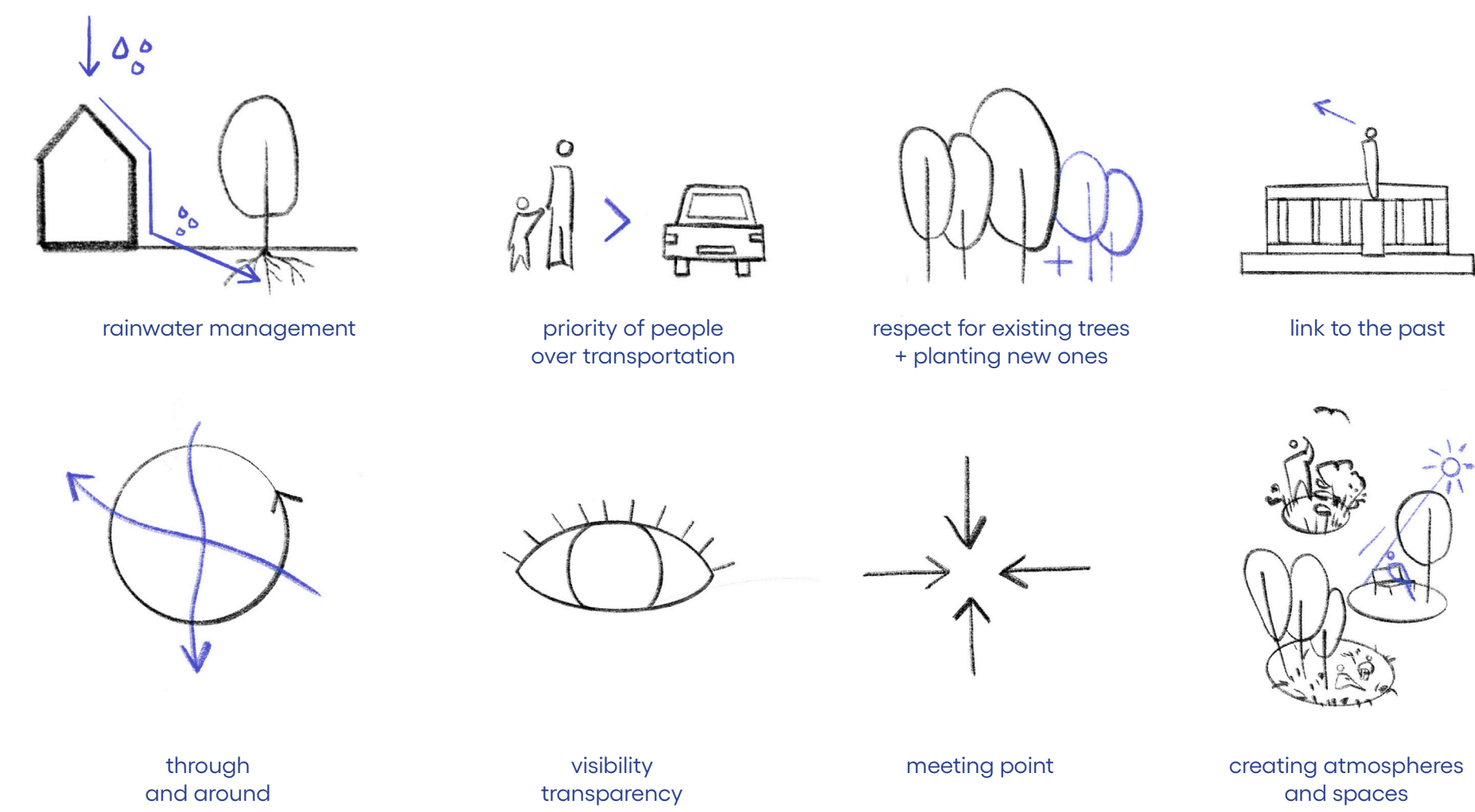




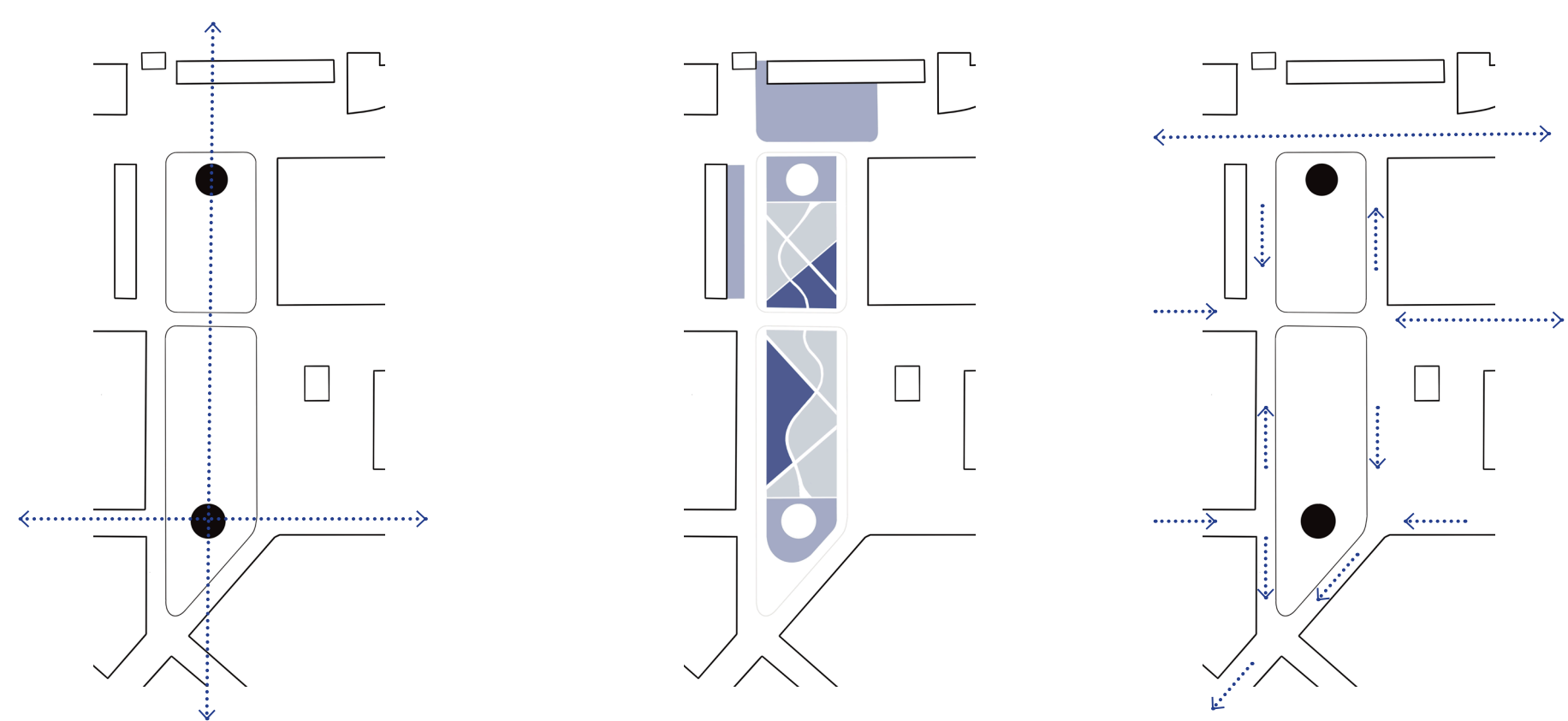
HUS FORWARD!



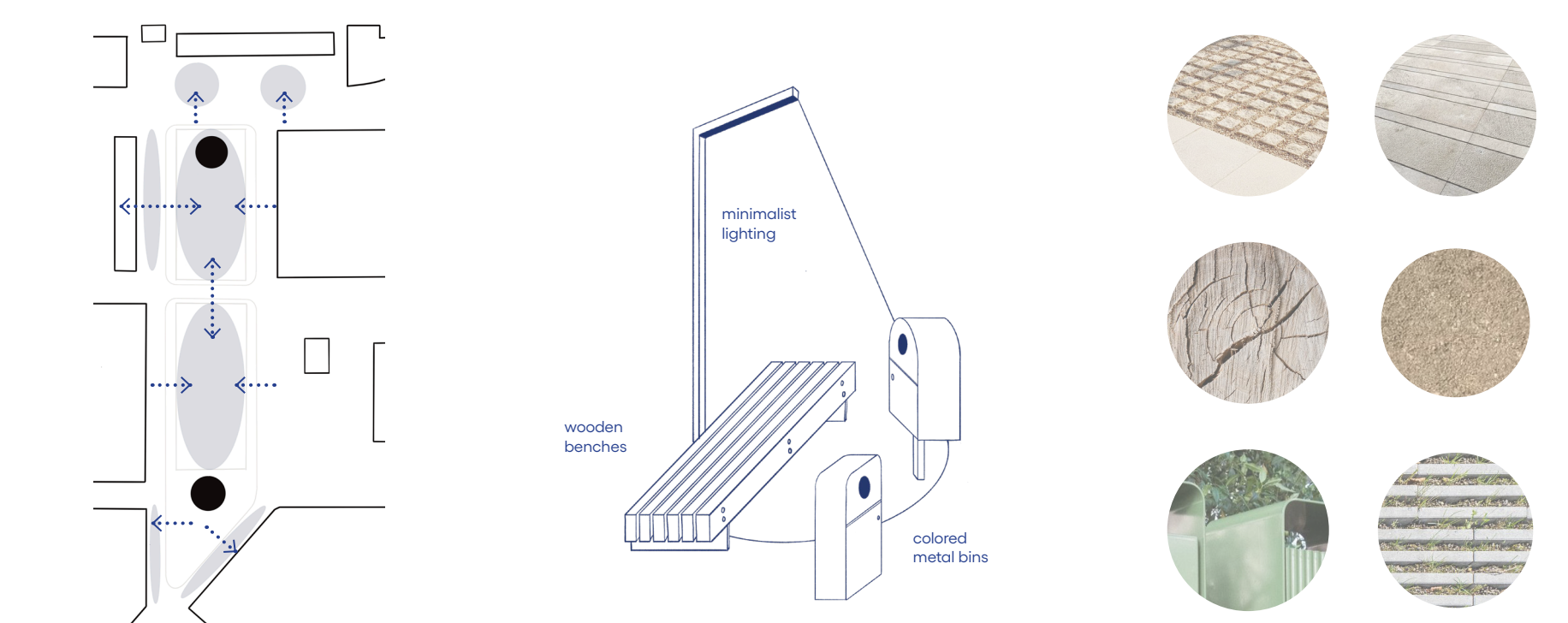
TÁBOR. A HUSSITE TOWN IN SOUTH BOHEMIA.
HUS SQUARE. THE GATEWAY TO THE CITY. A GREEN ISLAND. DARKNESS. TRAFFIC INTERSECTION.
URBAN BLOCKS. DEFINING THE SQUARE'S SPACE.
EMOTIONS. FEAR. DISGUST. PITY. UNDERSTANDING.
PROBLEM. DEPOPULATION. GENTRIFICATION. LOSS OF IDENTITY. VISUAL SECLUSION. SOCIAL ISSUES.
VALUES. OLD TREES. HISTORY. LOCATION.
EFFORT. TO OPEN UP. TO UNIFY. TO MAKE ACCESSIBLE. TO MAKE LIVABLE.



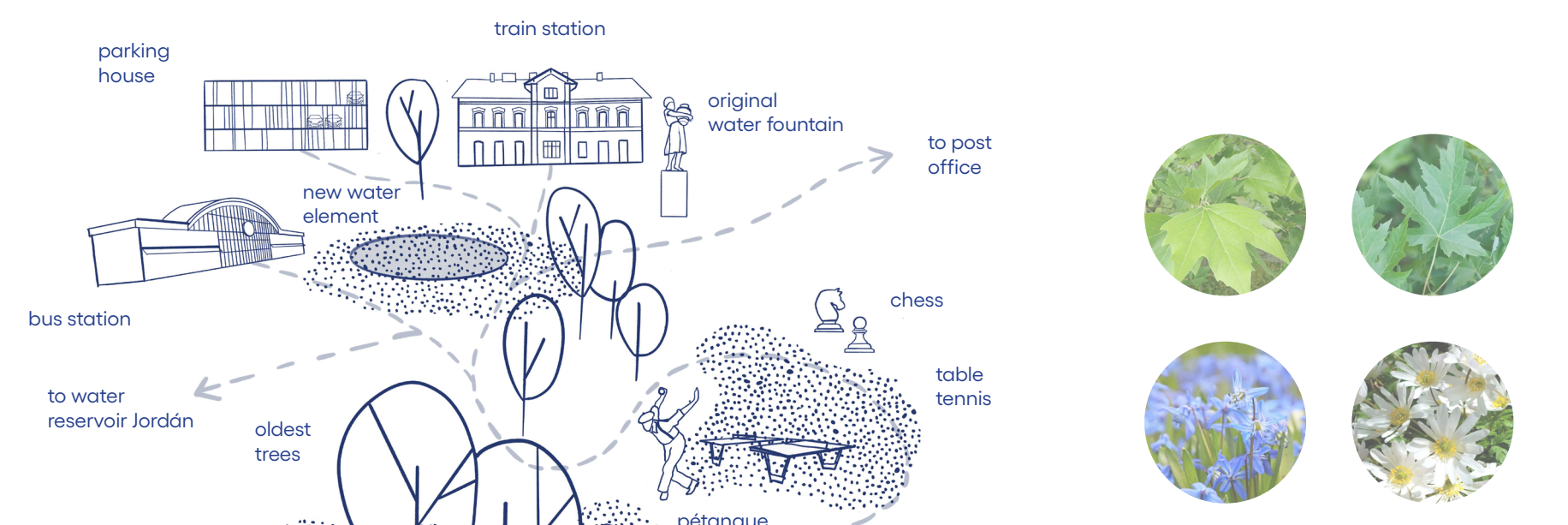
CONCEPT
The key concept of the design is to unite the currently physically and visually separated areas. This involves creating one large, single-level space, serving as a dignified symbolic gateway to the city. The design focuses on visual openness, enhancing light and enabling movement within and around the area. It aims to streamline traffic and prioritize pedestrians over mobile vehicles, while respecting the current values of the park, including the century-old trees and the Jan Hus Memorial, and complementing them with contemporary elements. A lively street frontage that directly interacts with the park creates a functional shared space. The design fosters activity, habitation, and the division into busier and quieter zones. These are the main principles guiding the proposal.



geometry
A significant change is the relocation of the memorial to Master Jan Hus. From its somewhat obscure position inside the park, it has been moved forward. The current location, at the national intersection of axes with a view directed towards the city center, emphasizes the importance of this figure for Tabor.



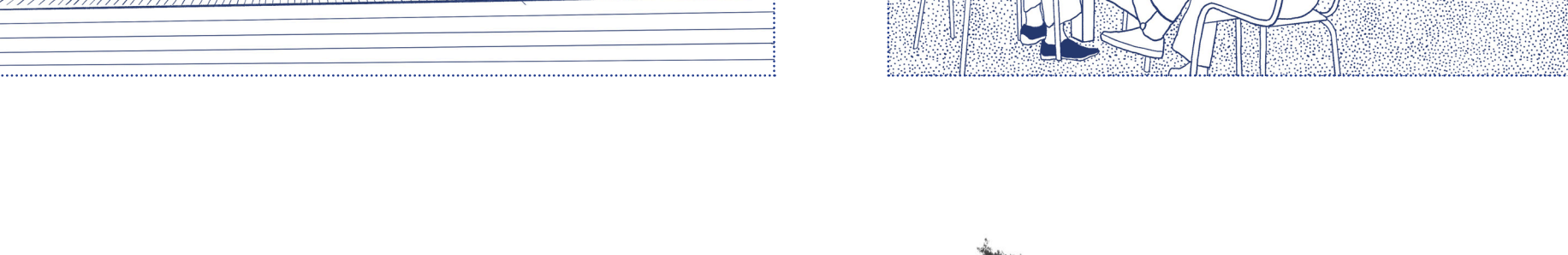
functional zones
The elements of the street furniture are as simple as possible to merely complement the overall complexity of the space.



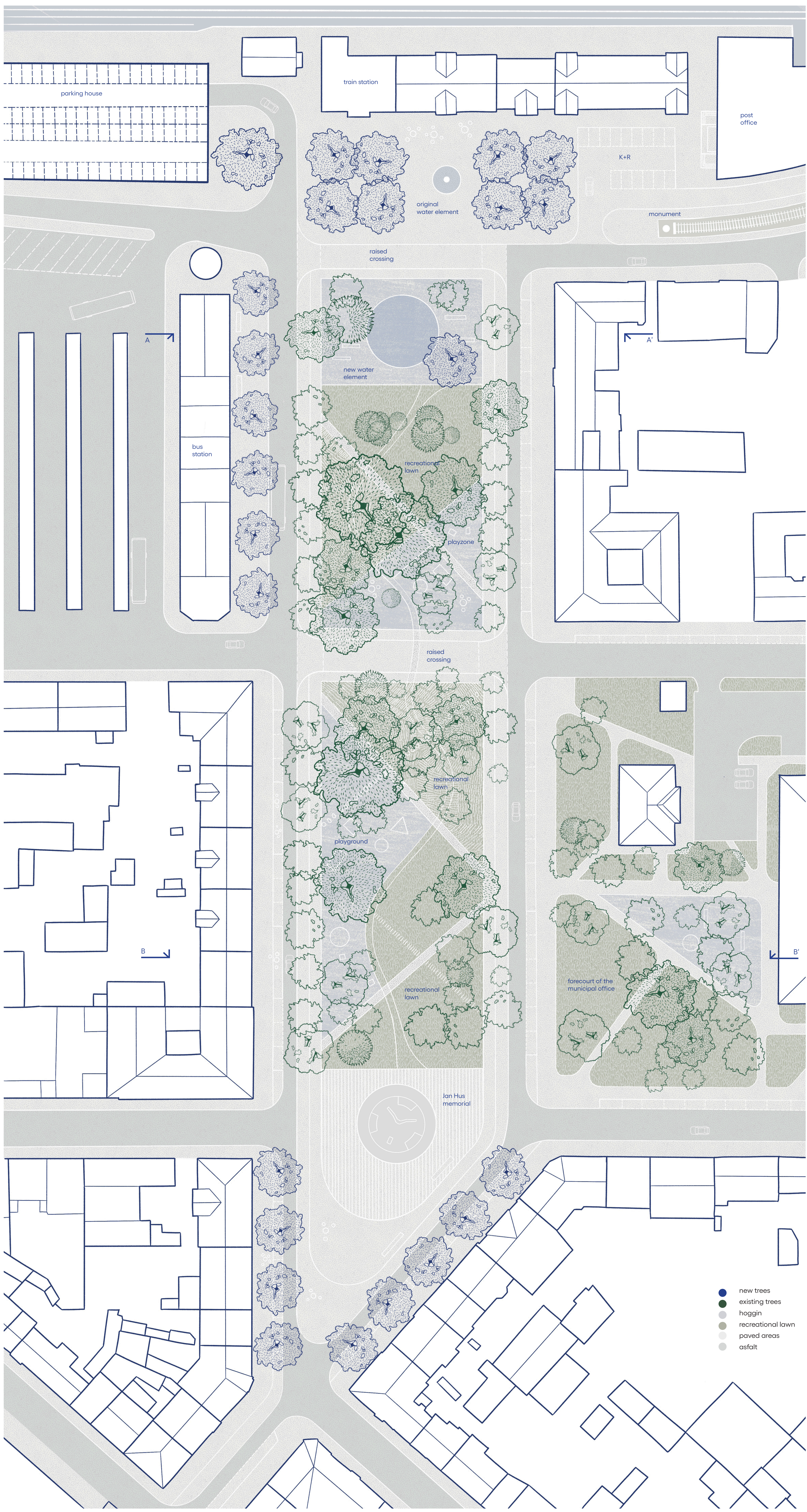
mobility
The traffic scheme remains essentially the same as the current state. However, a significant change includes the reduction of the driving profile, removal of parking spaces, widening of sidewalks, and the conceptual addition of a parking garage in the area of the current parking lot.



materials
The materiality is chosen to be as neutral as possible. For the areas around existing trees with highly developed root systems, hoggins is chosen. Furthermore, granite cobblestones, wood mainly for furniture and play elements, metal for details and drainage channels, grass pavers, and classic cut paving are used in the design.



vegetation
In the design, I propose a slight thinning of existing trees, especially in the area in front of the station, which currently appears very dark and unfavorable due to the use of conifers. For the planting of new trees, *Acer saccharinum* is predominantly used, and *Platanus x hispanica* is utilized in front of the parking garage. Lawns are minimized compared to the current state and designated for recreational use. In other green areas, shade-tolerant perennial underplantings are used under the trees, flowering in various seasons, which will help retain water better in warm periods and simultaneously increase biodiversity in the area.



SITE PLAN 1:500



ATMOSPHERES

