

Round Table

Round Table
Serpentine Pavilion - London, UK

by **Michal Zapletal**

Studio Achten-Pavlíček
Summer semester 2024

01 **Concept**

02 **Site**

03 **Plans**

04 **Visualisation**

Round Table

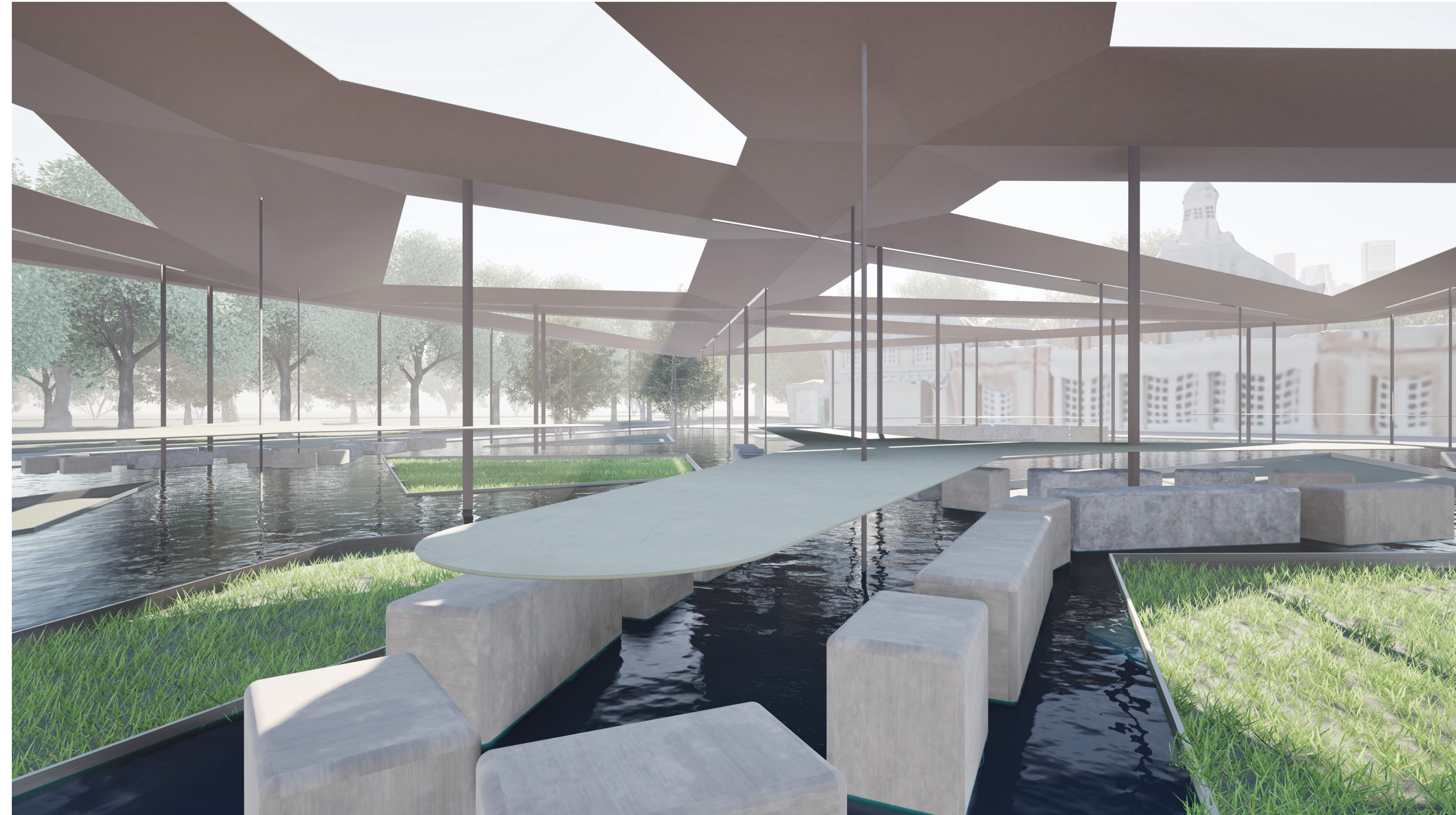
Serpentine Pavilion - London, UK

In the age of constant streams of news and information crowding our daily lives, it is becoming increasingly challenging to be present in the moment and fully engage with where we are.

Round Table is a space where one can slow down, take a break and disconnect from the digital world and connect with the physical space around them.

It aims to engage a range of senses - the visual and tactile through true raw materials, the auditory in the splashing of water and tapping of rain drops, and the olfactory with the scent of fresh breeze chilled by the water surfaces in the high of the summer once you take off your shoes and walk barefoot to find your place by a table.

The pavilion offers a place to sit at a range of tables varying in height depending on the mode you want to be in, let it be for a work meeting, to have lunch or simply to sit for a moment when passing by on the way home.



01 Concept

round table
noun

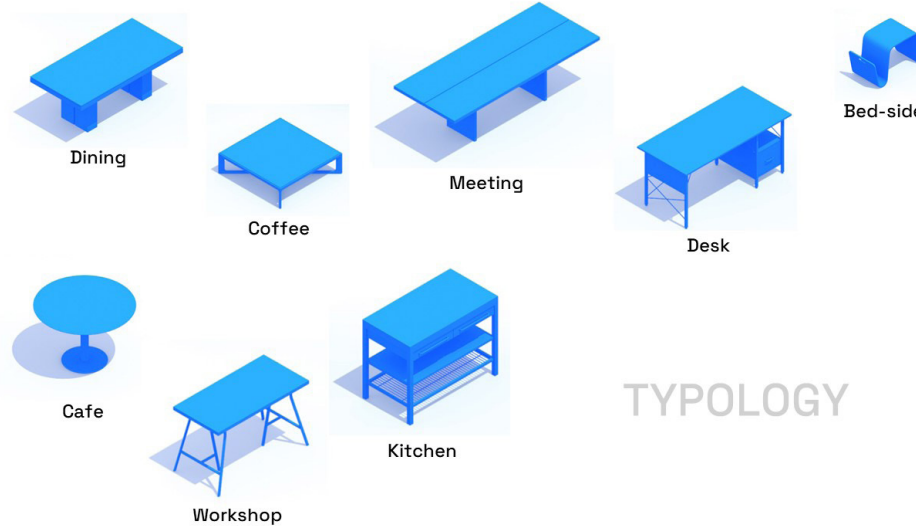
- a place to meet in conditions of equality
- a table which has no head or no sides, which would imply privileged positions
- references the period of King Arthur, where he congregated with his knights around a round table

01
a place to (dis)connect

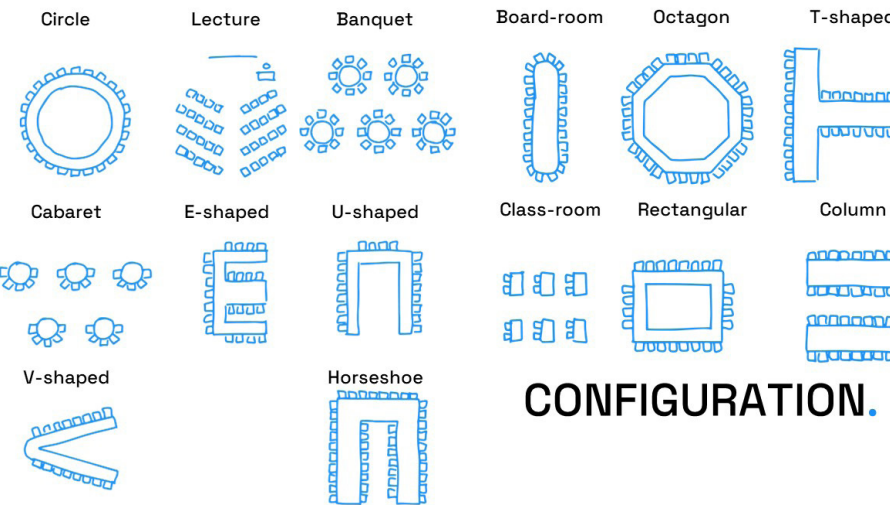
02
challenge the expected function

03
confront social norms

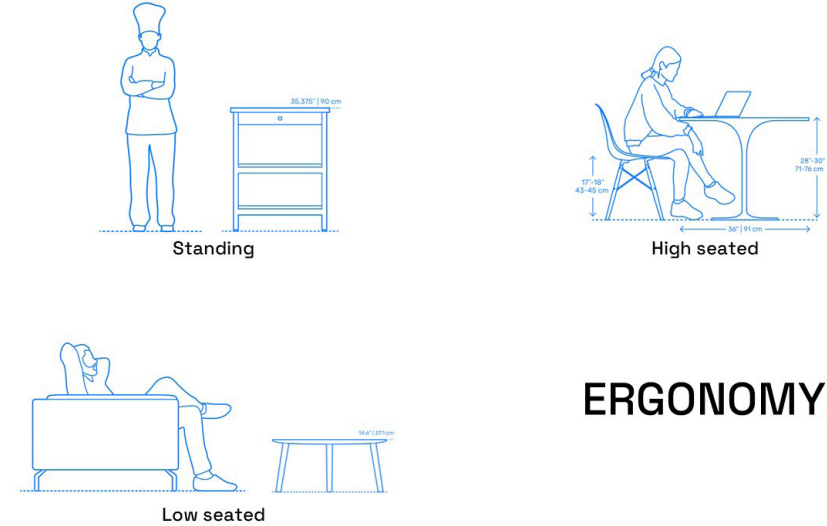
objectives



TPOLOGY

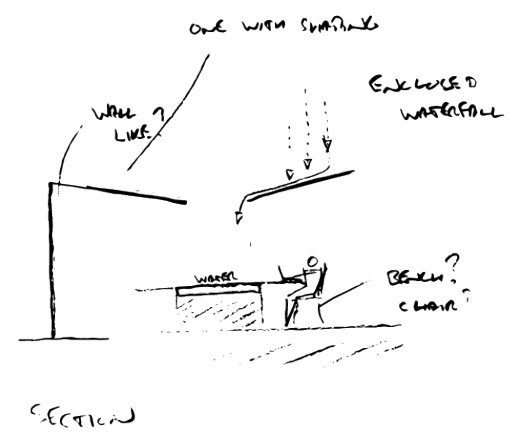
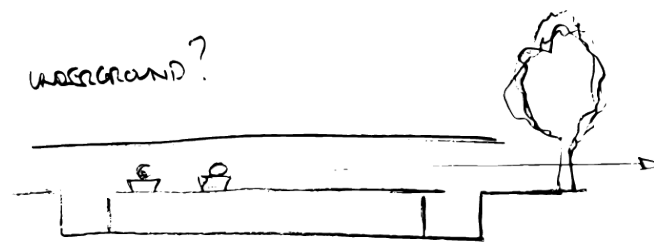
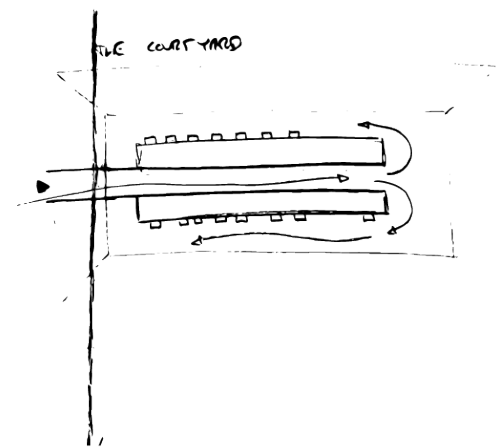
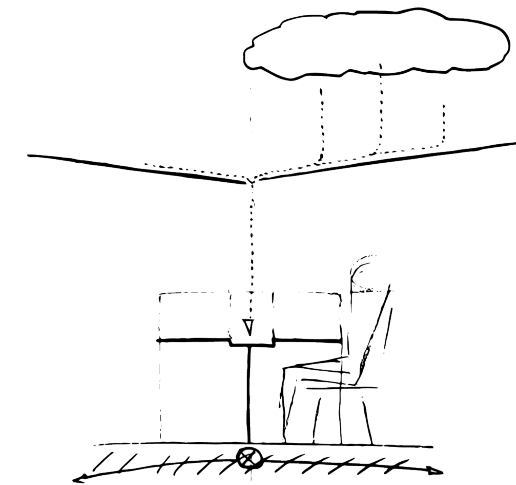
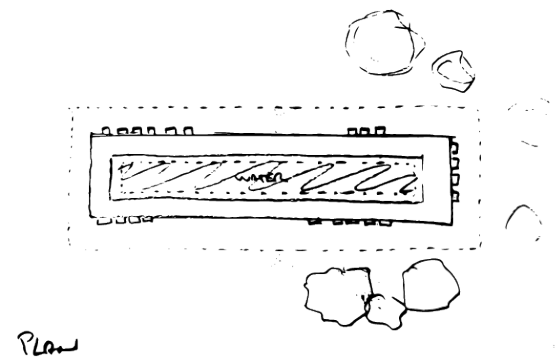
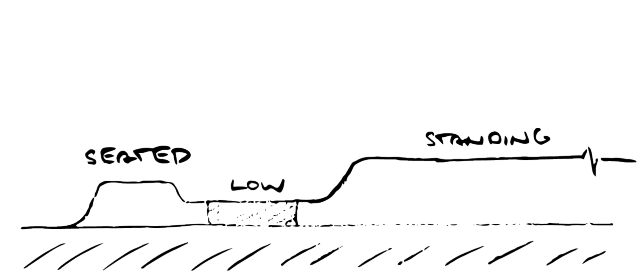


CONFIGURATION.

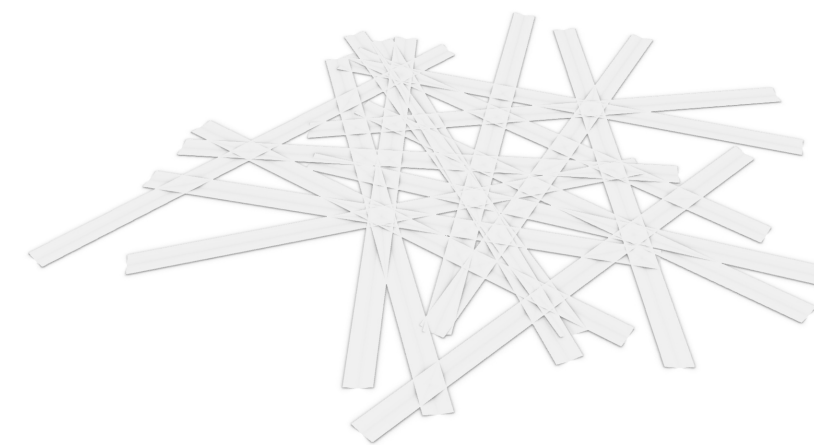
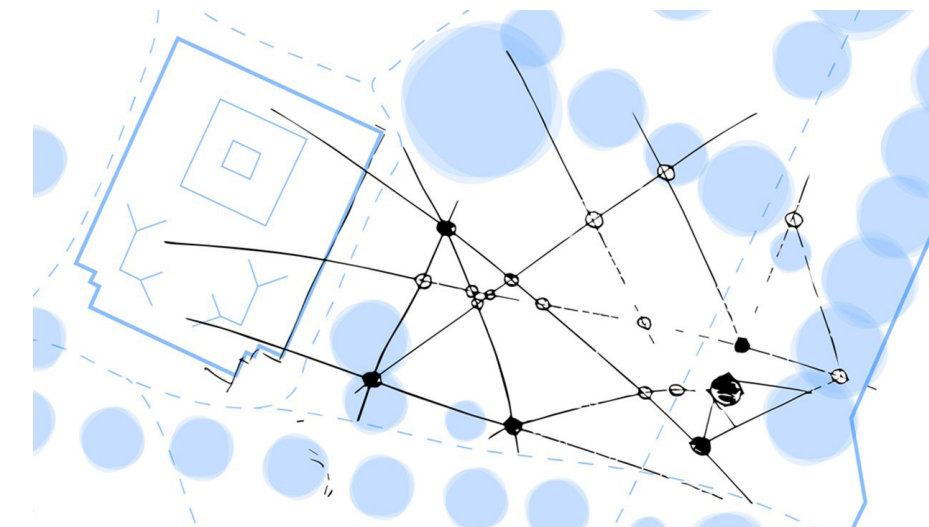
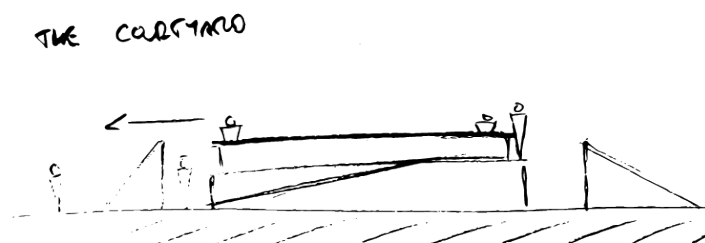
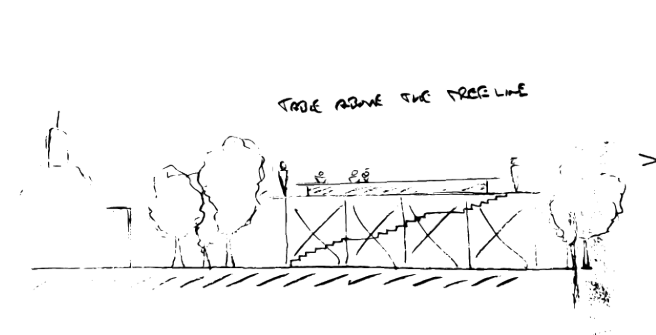


ERGONOMY.

considerations



form prototype

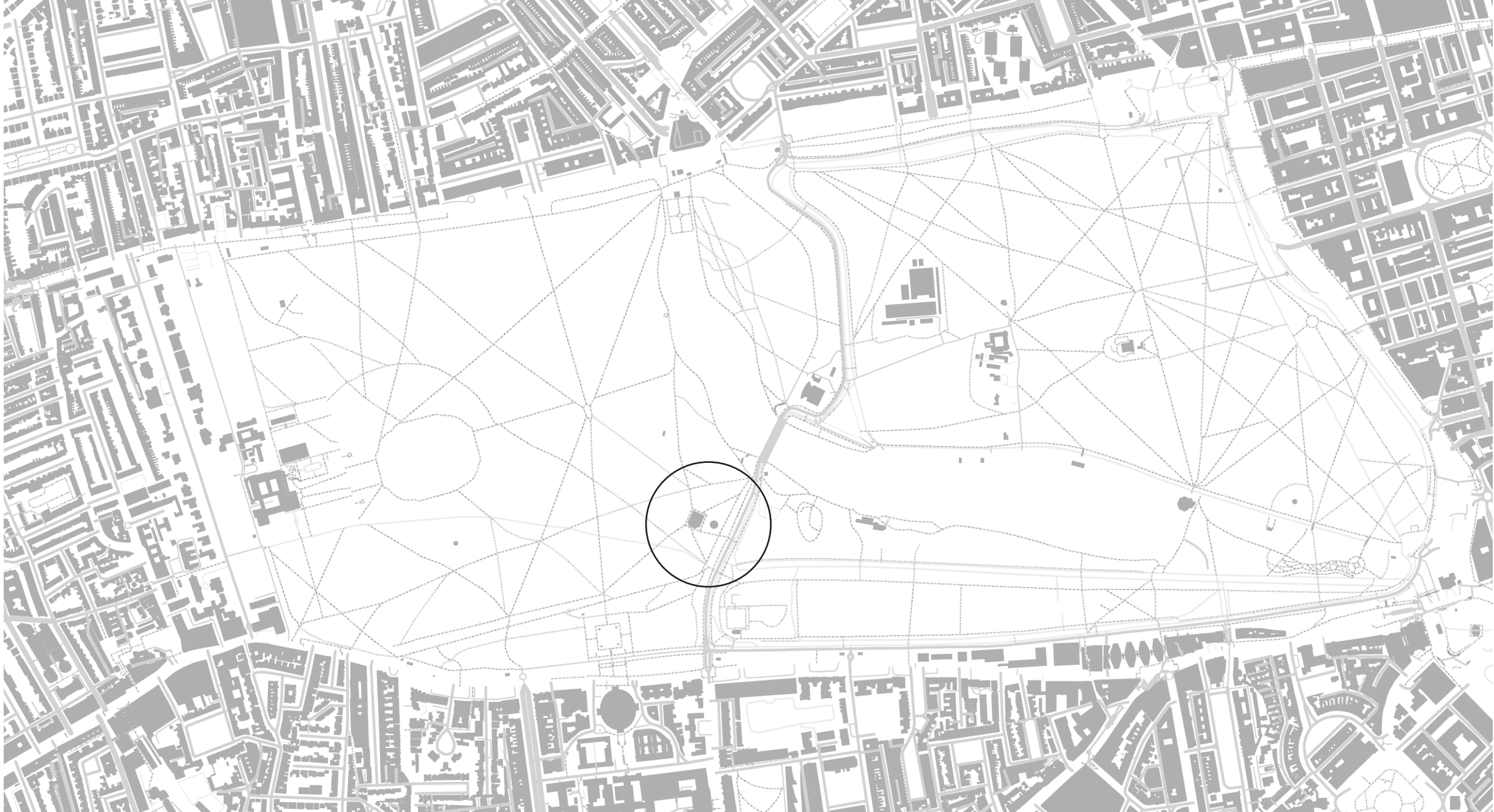


positioning on site

initial sketches

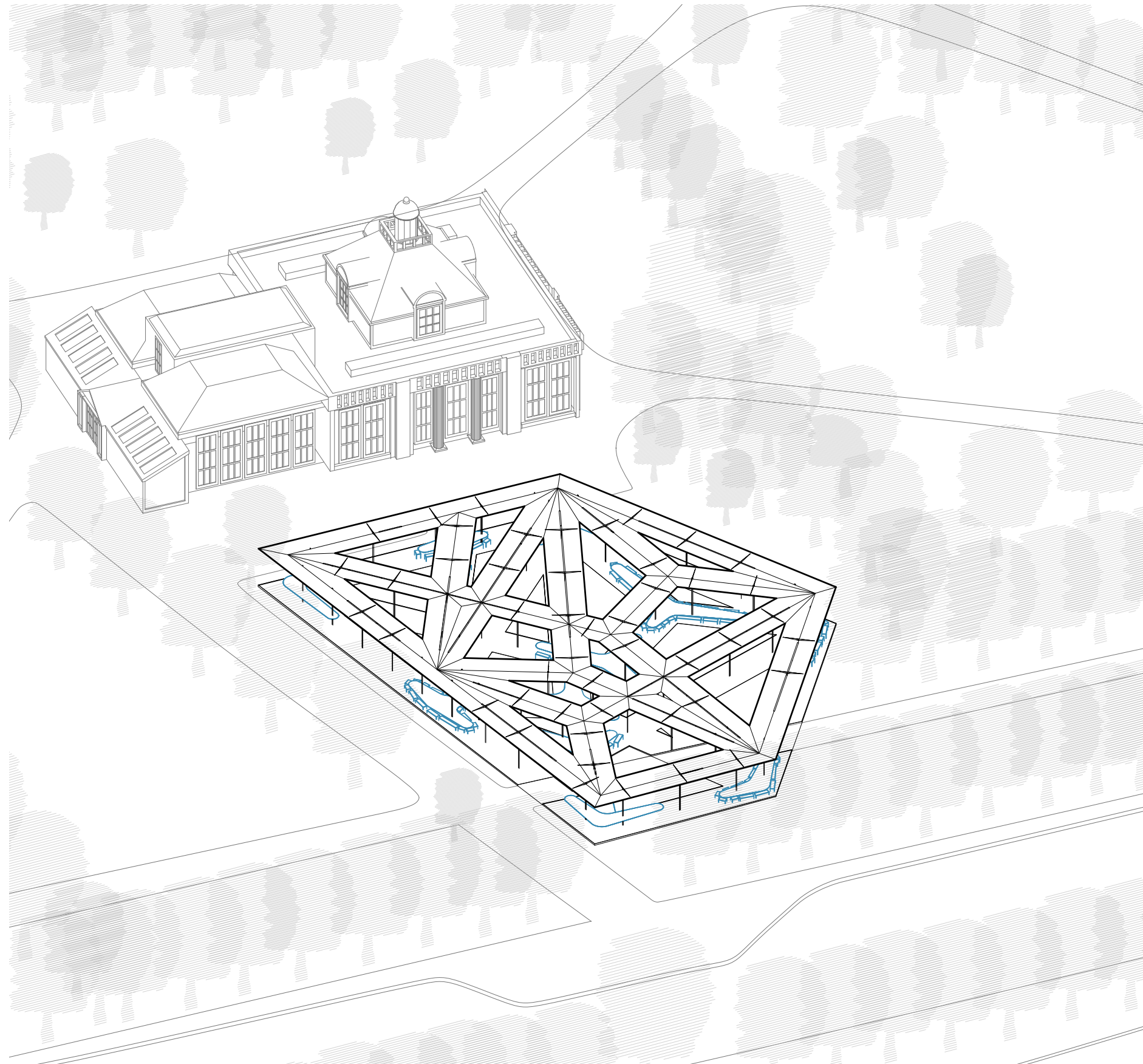


London

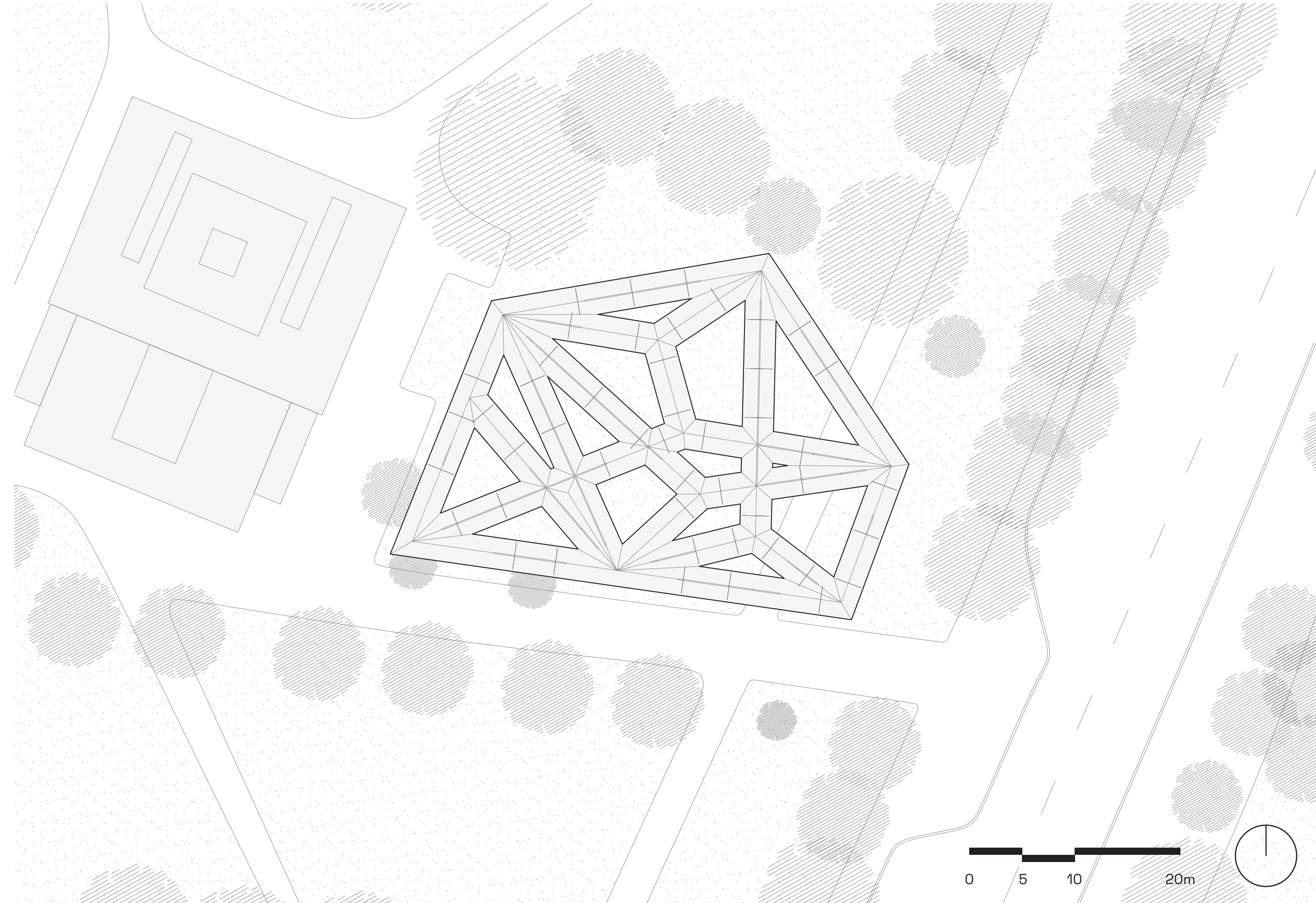


Hyde park

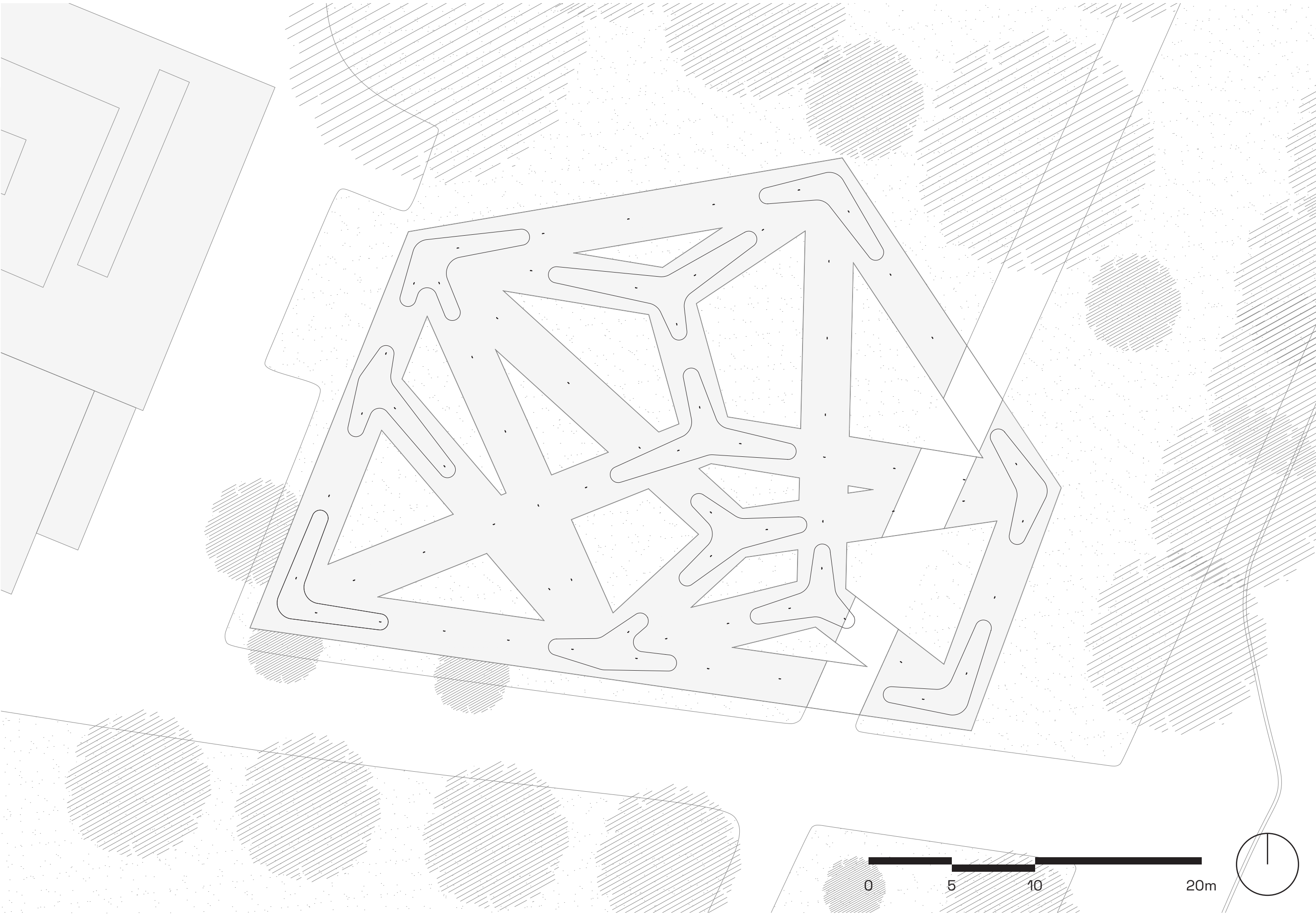
02 Site



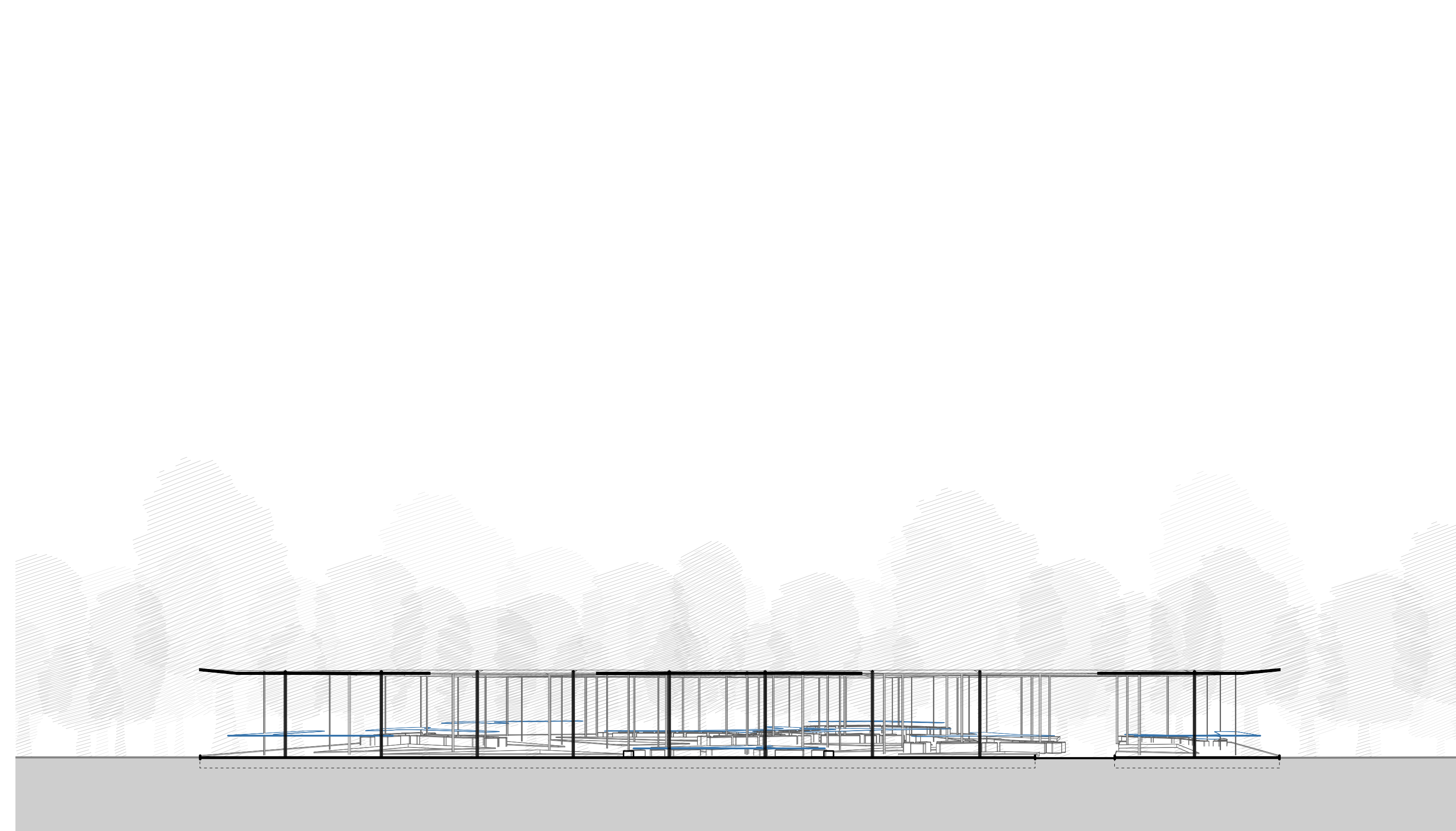
isometric view



site plan



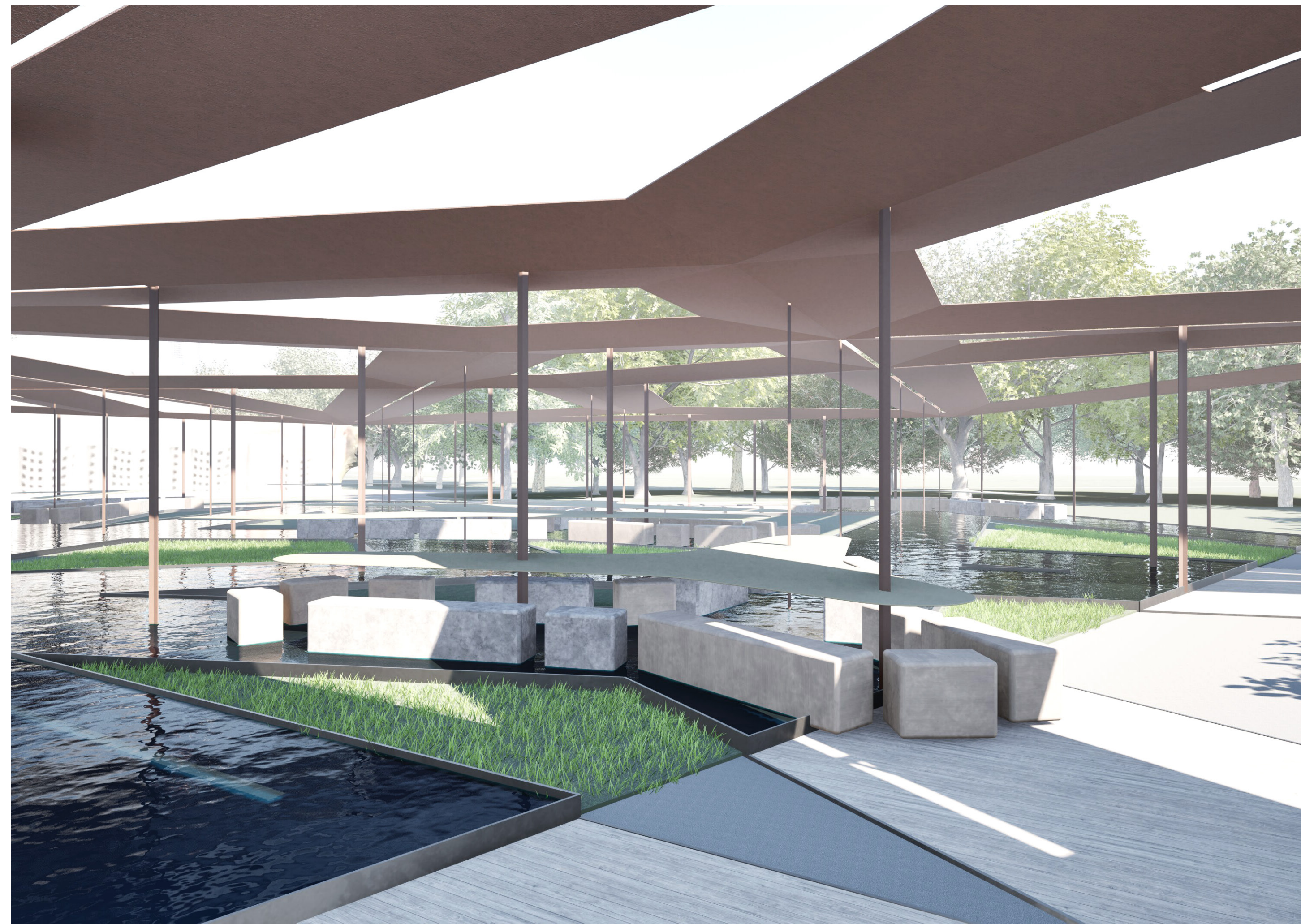
plan



section - north



04 Visualisation





rusty steel for SHADING



patina brass for TABLES



solid oak for BENCHES

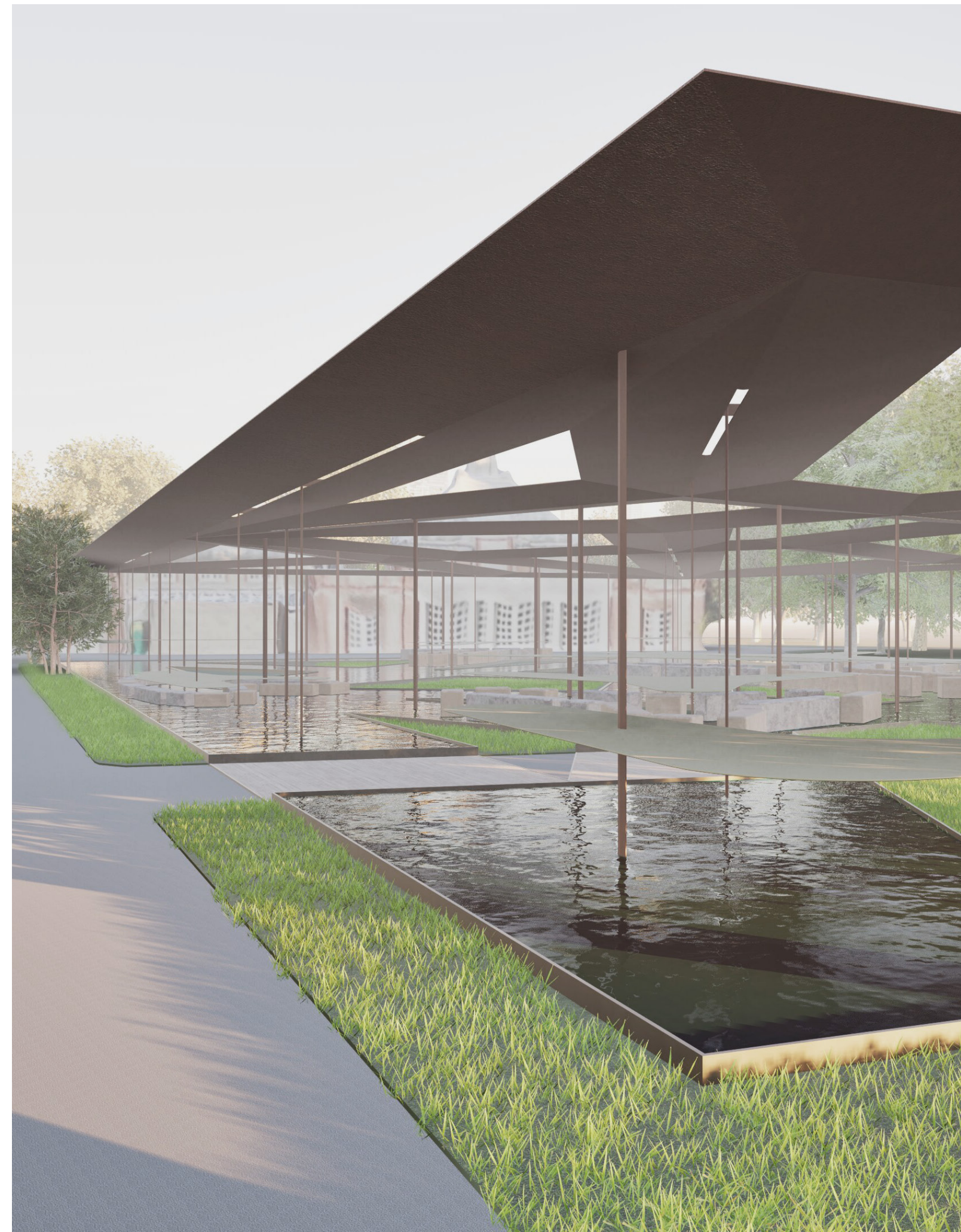


solid granite for BENCHES



shallow water for WALKING

materiality



Studio Achten-Pavlíček
summer semester | 2023-24

Fakulta architektury ČVUT v Praze

