

# HOLEŠOVICE CULTURAL AND ART CENTER

Architectural and Urban Project

Martino Lampis / Diploma project / FA ČVUT / academic year 2017 - 2018 / semester 10 / Diploma Project Tutor: prof. Ing. arch. Zdeněk Zavřel



Localization map



Built environment map



- Residential
- Administrative polyfunction
- Commercial
- Technical infrastructure
- Industrial activity
- Civil Buildings

Existing circulation map



- Streets
- Water transportation infrastructure
- Rails
- Metro line C

Vision

- A new lively cultural center on the riverfront for Holešovice and the city
- A new viable riverbank where citizens and visitors can enjoy the riverfront day and night in all seasons

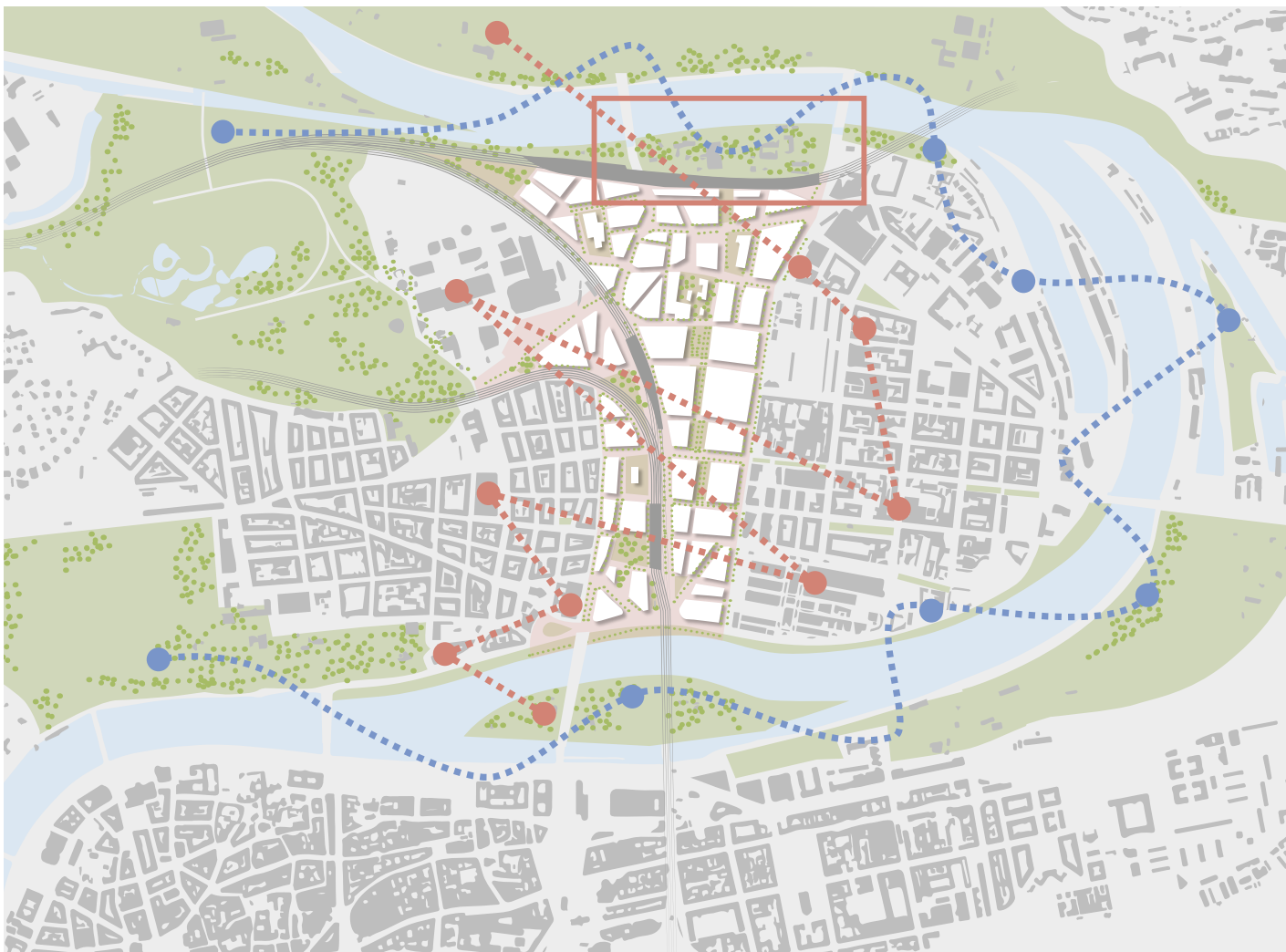
Goal

- To re-establish the connectivity between the city and the river
- To promote environmental justice
- To enhance the existing network of cultural and recreational activities of Holešovice
- To integrate the riverfront creating destination for multiple purposes

Design concept

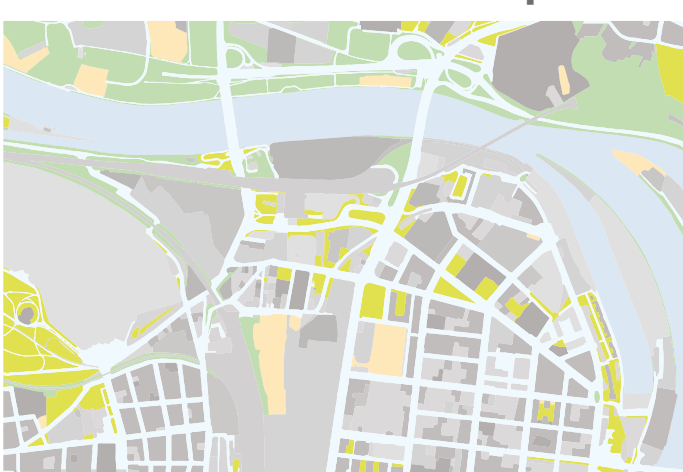
- A new urban composition interconnected with the existing city fabric and the future development
- High quality connectivity within the proposal through clear planned routes
- A natural riverfront inspired by the natural flow of the river
- A series of locally identified nodes, public spaces and open vistas across proposal

Context map



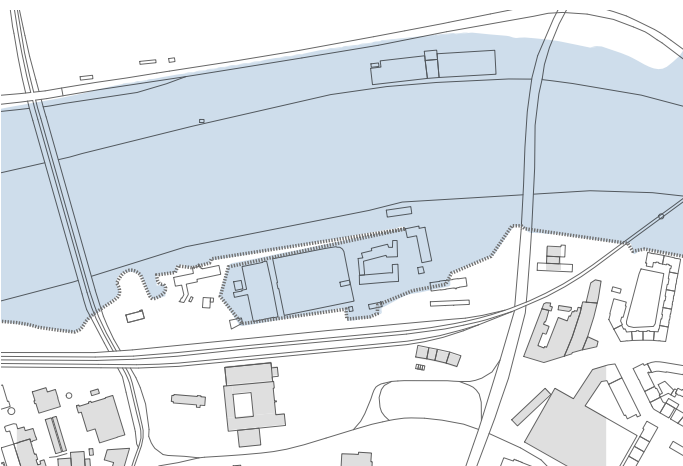
- Green areas and parks
- Cultural Network within Holešovice
- Network of potential riverbank areas
- Future Bubny development CMC architects masterplan 2012
- Existing urban pattern

Green environment map



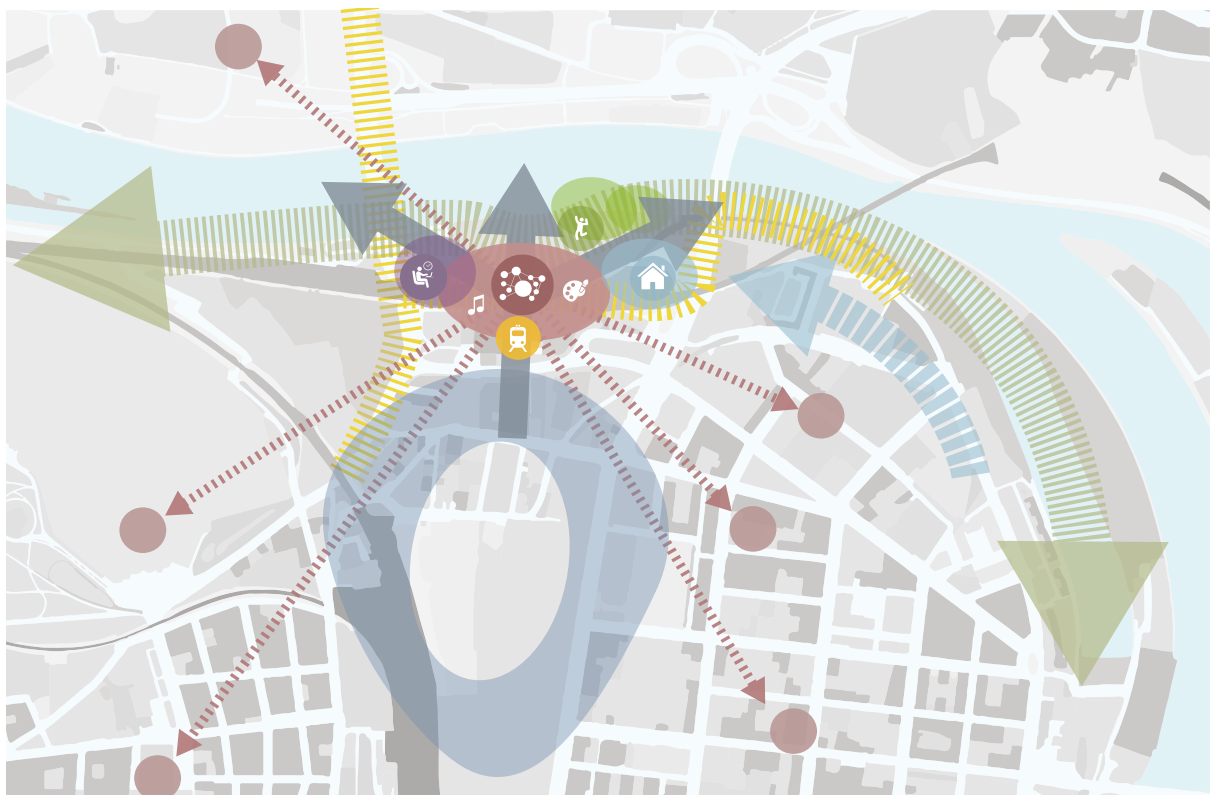
- Green landscape
- Parks and gardens
- Recreational areas

Flooding map



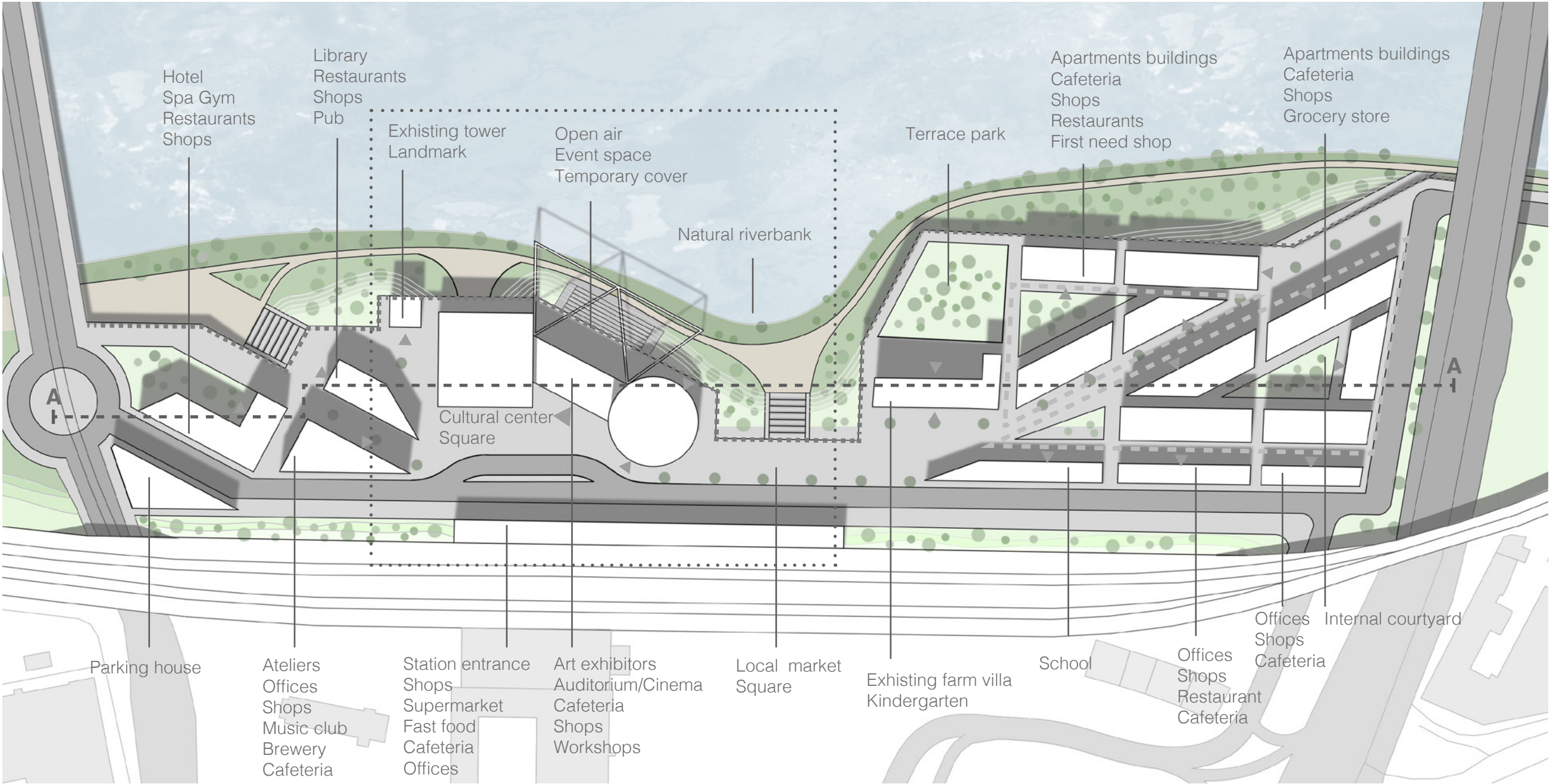
- Flooded areas
- Limit of flood

Concept scheme

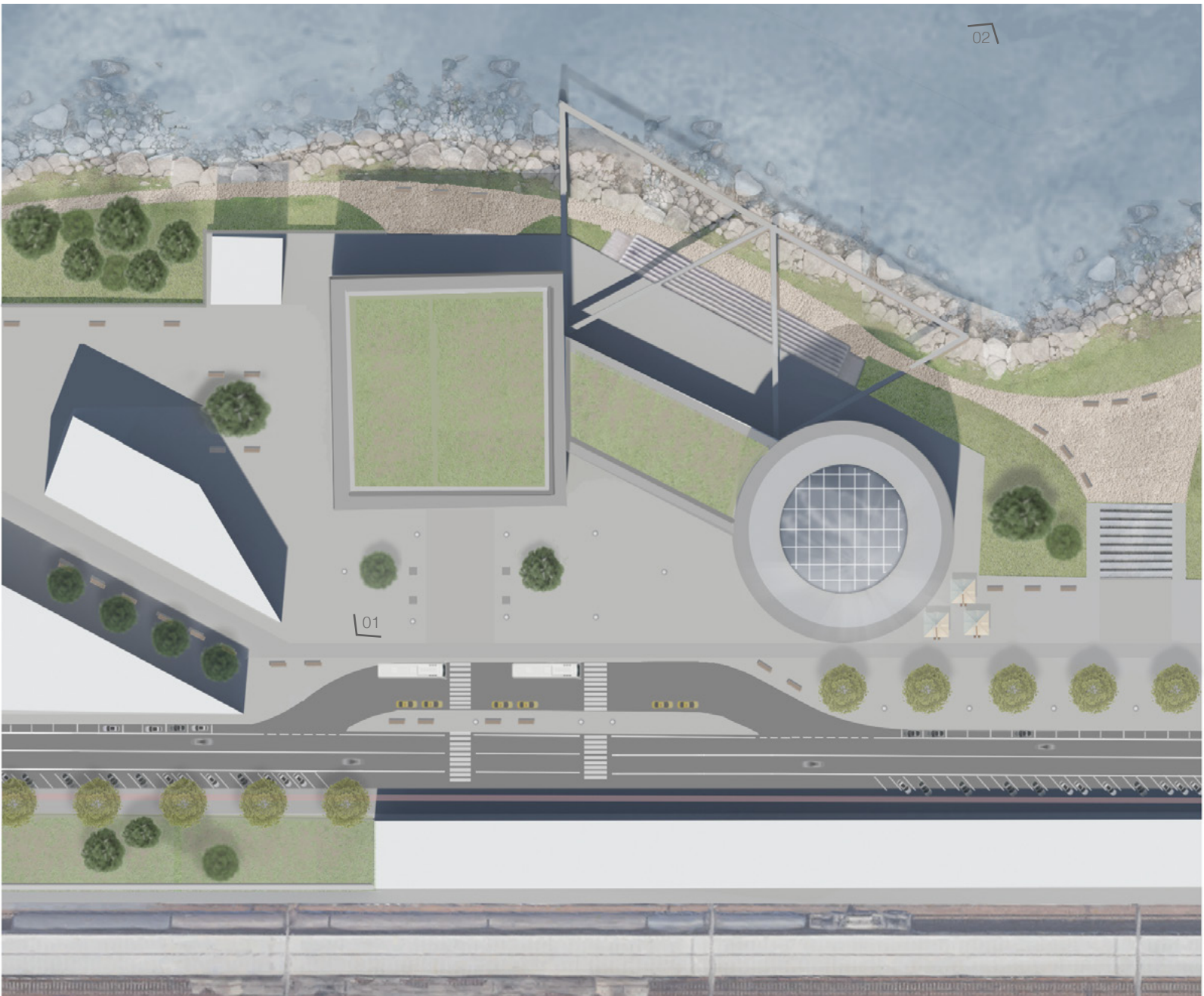


- Cultural activities within Holešovice
- Cultural connections
- New road system
- Green riverbank reclamation
- Housing
- Working
- Recreation
- Train and metro station
- New cultural center
- Connectivity and development directions
- Future Bubny development

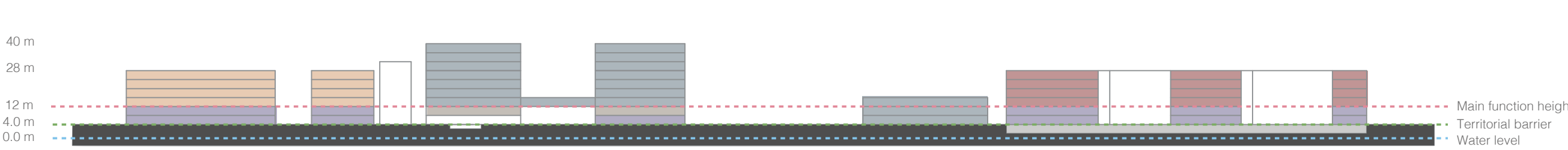
Masterplan scale 1.2000



Situation scale 1.1000



Territorial section A.A



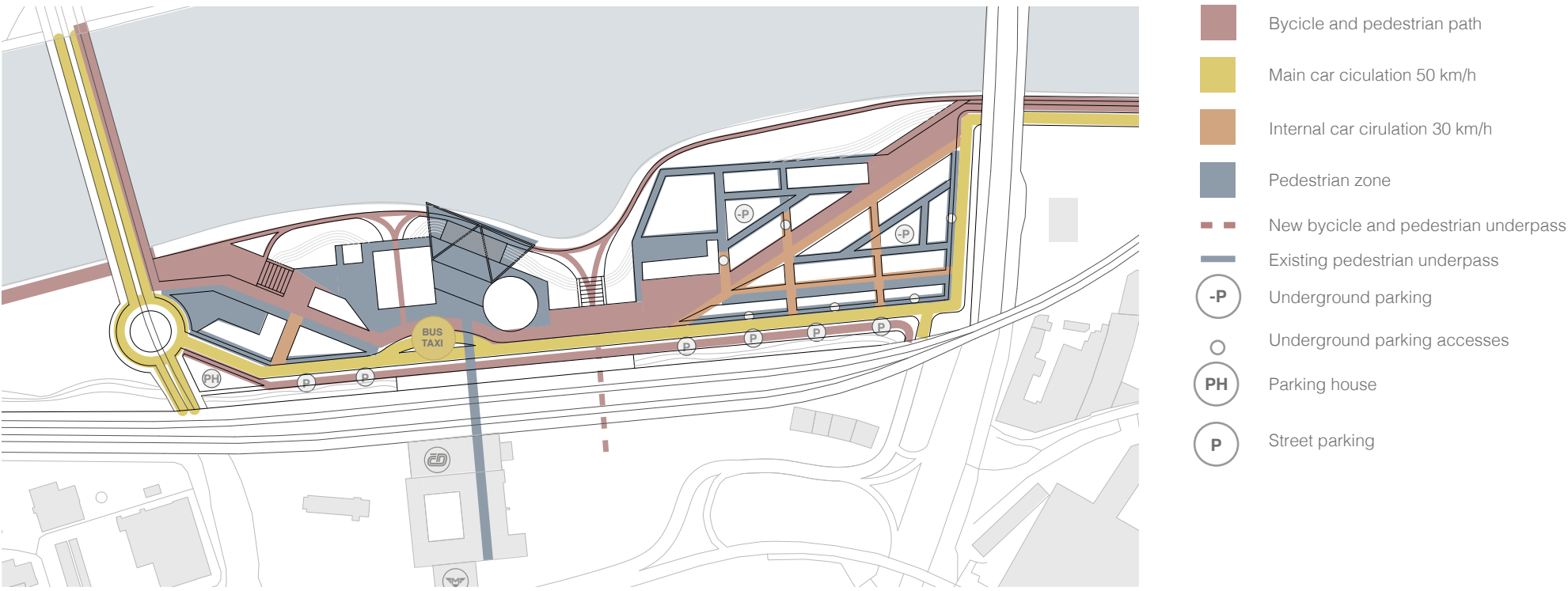
- Residential
- Commercial
- Parking
- Culture / education
- Leisure / free time
- Offices

Visualization 01

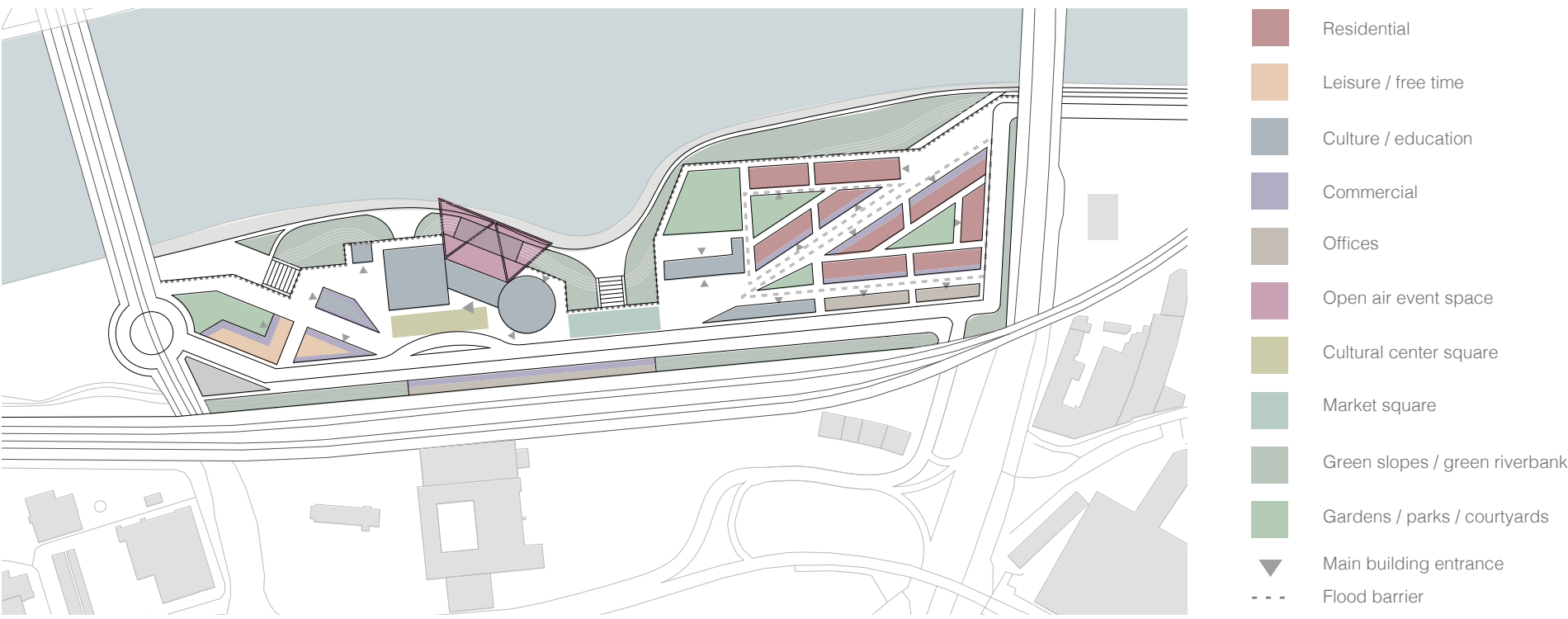




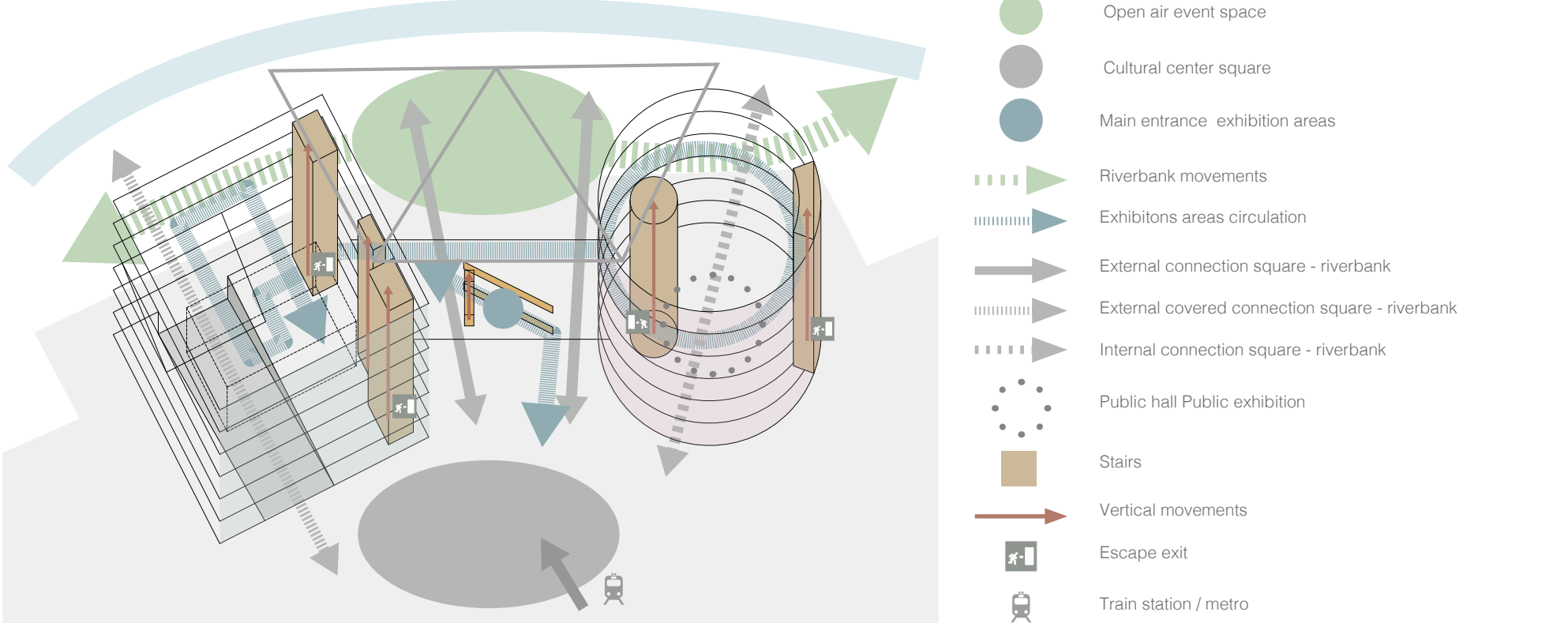
Circulation map



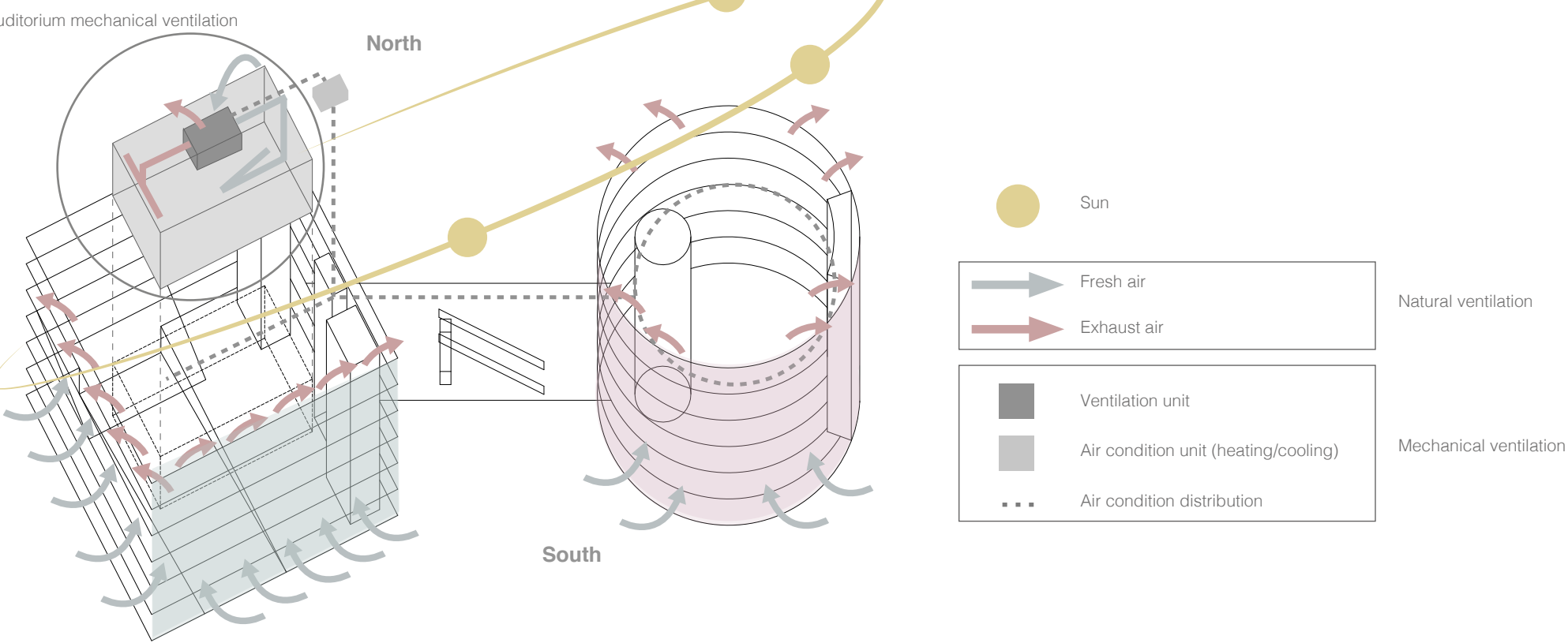
Function destinations



Building circulation



Building ventilation



Bird eye view 02



The Cultural center overview

The Holešovice Cultural Center is envisioned as a series of separate buildings, each with a distinct design consistent with its function and providing its own identity, connected by a unifying element, a Bridge. In this way, the design provides benefits of both separateness and consolidation. An external structure serves a shading function, providing a shaded outdoor space on the riverfront, aiming to transform what could typically be an impractical and exposed condition into one that provides a comfortable outdoor microclimate throughout the day. With characteristic buildings and a unifying bridge, the design delivers on a commitment to bring programs together, bring people together and provide a solution that is representative of the changes Holešovice is undergoing, while at the same time introducing generous amounts of natural landscape, a microclimate and usable public spaces directly on the riverbank.

The Cylinder

The Cylinder is a solid building made of concrete that functions as exhibitor for traditional artworks, as painting and sculpture. For its strict design the exhibition is set up on circular floors around a main full height hall that is illuminated from the top by a glazed roof. Narrow strip windows illuminate each floor from above with a diffused light, optimal for artworks. As a conclusion of this first exhibition space, the last floor has a double height to exhibit massive artworks. The ground floor of the building, not connected with the upper exhibition, serves as public space with a cafeteria, shops and workshops and it can host independent exhibitions.

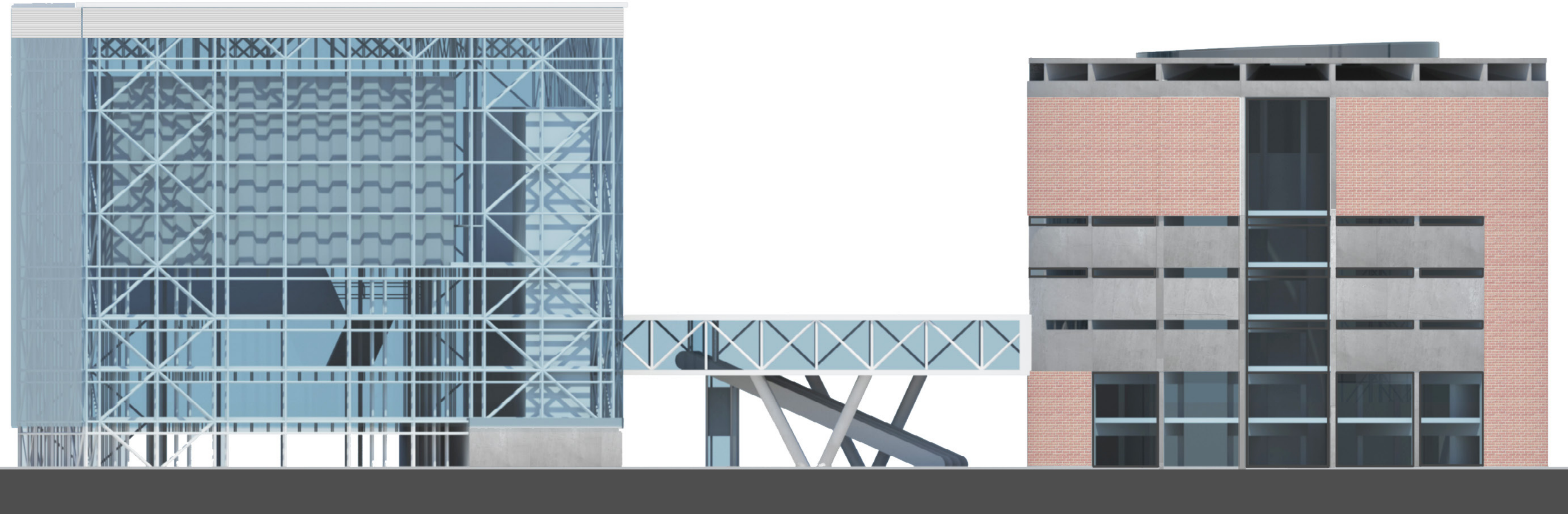
The Bridge

The Bridge besides to unify the two buildings is important because it functions as a main entrance to the cultural center. It is the foyer for all the exhibition spaces. This space distributes visitors to the chosen exhibition, while they can enjoy the view on the Vltava river. Since the Bridge is elevated it allows a visual connection with the river from the main square and it is possible to underpass it and directly get to the river under the shading structure where open air event can occur.

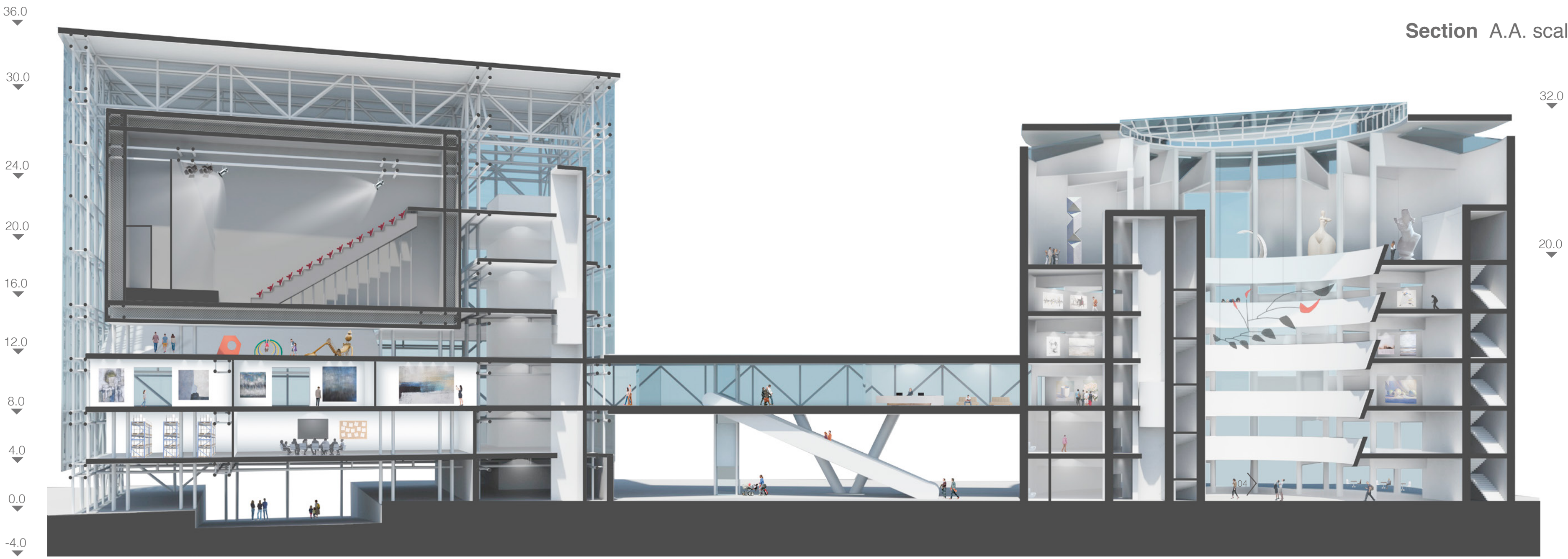
The Cube

The Cube is a light building made of steel and glass that has flexible spaces to exhibit interactive and media art. The floors are connected with ramps and they work as a continuum space constantly changing in disposition and height. Some spaces have double height and others half height, in the main hall is located a suspended auditorium shaped as a industrial container. One cafe is located on the top floor of the building where it is possible to observe the high space and the outside view. Visitors have the opportunity to observe the outside panorama from every position in the building thanks to the absence of perimetral walls, that gives a sense of continuity between indoor and outdoor spaces. The ground level of the building connects directly the riverfront with the square through a gentle slope, it will be the main route between the station and the river.

South facade scale 1.250

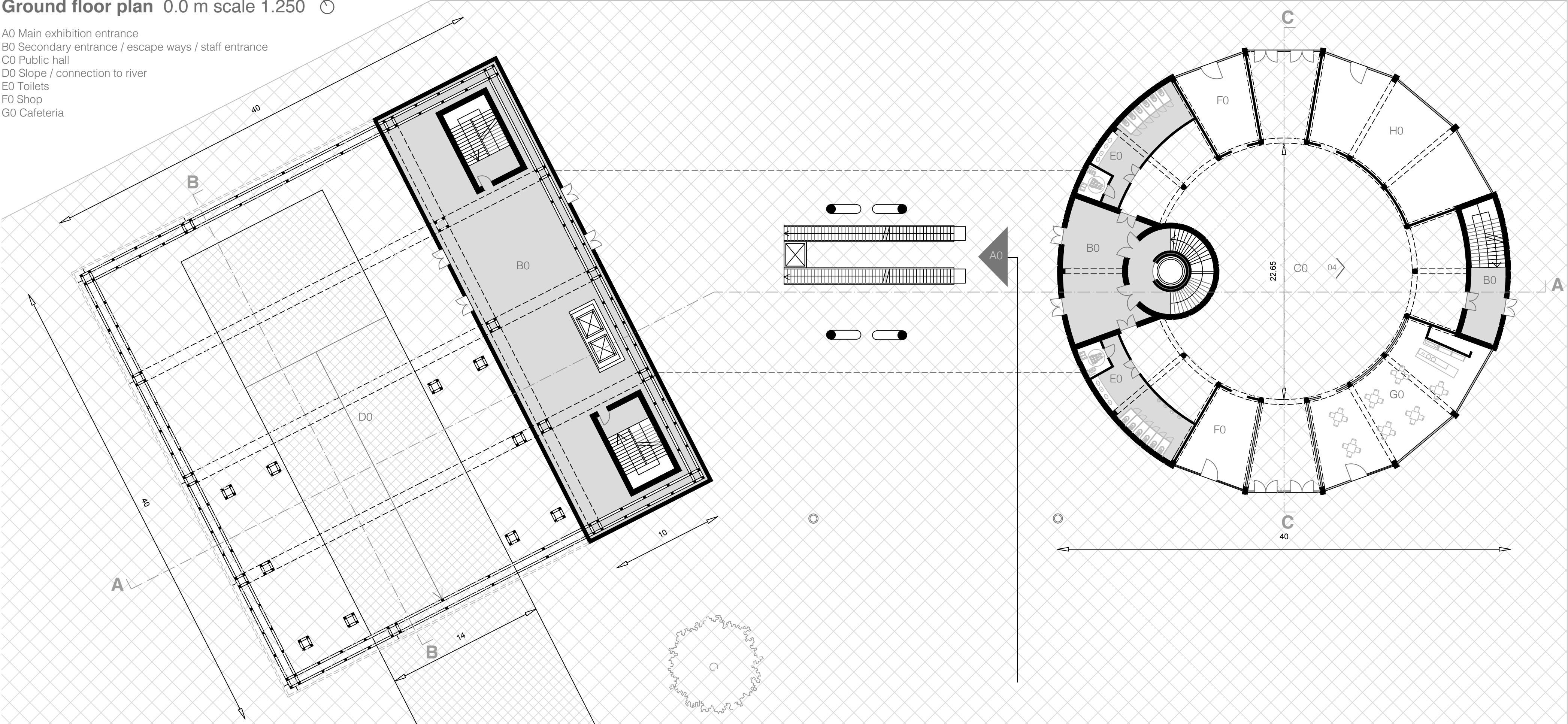






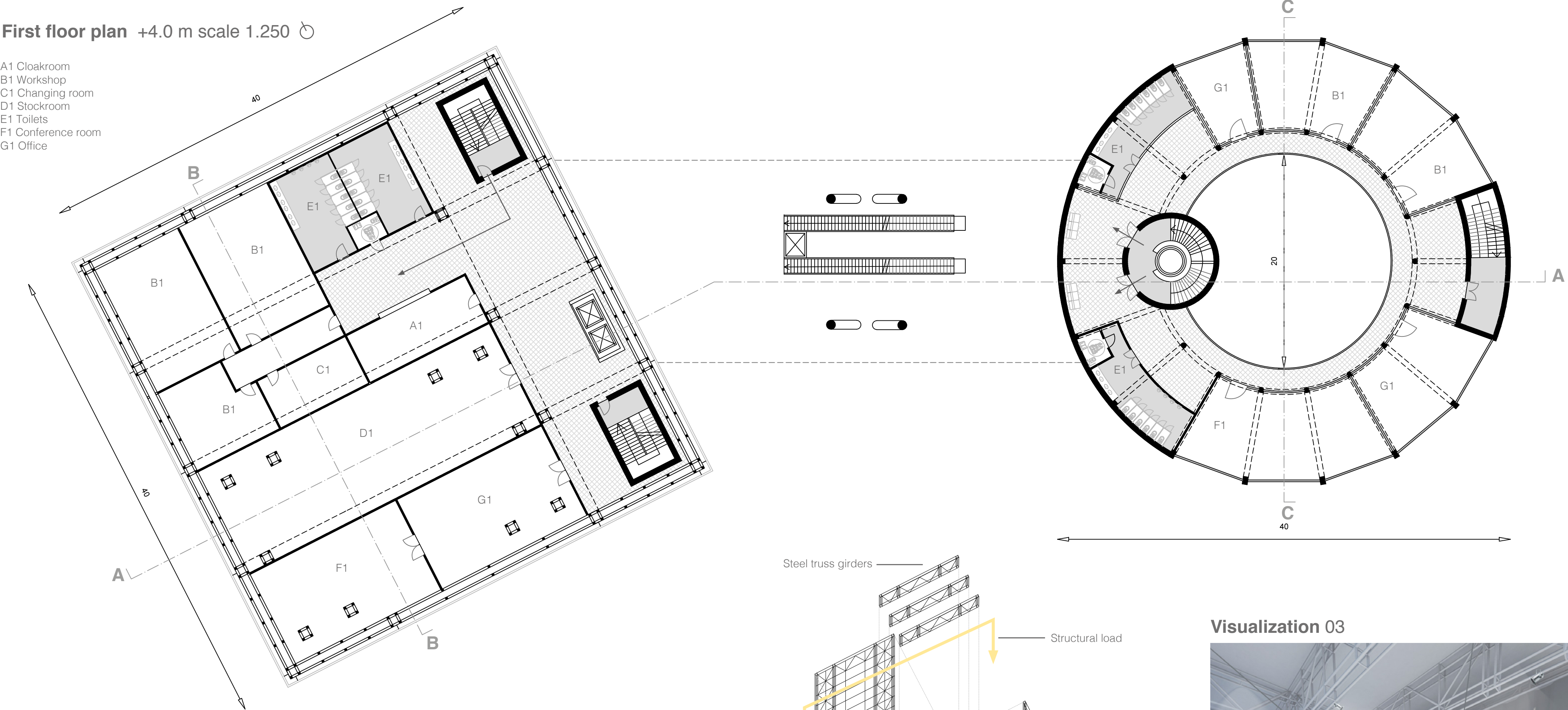
Ground floor plan 0.0 m scale 1.250

- A0 Main exhibition entrance
- B0 Secondary entrance / escape ways / staff entrance
- C0 Public hall
- D0 Slope / connection to river
- E0 Toilets
- F0 Shop
- G0 Cafeteria

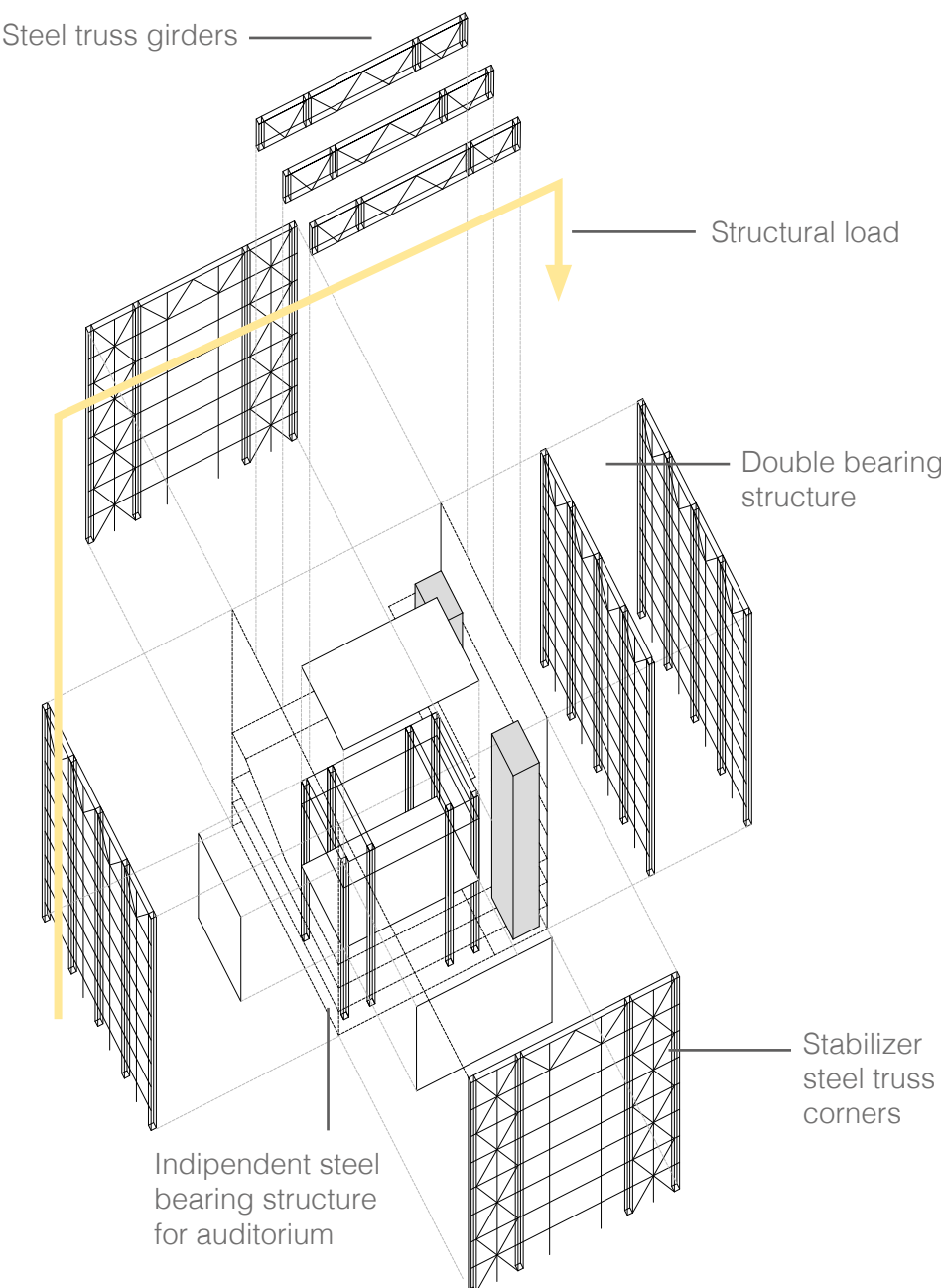
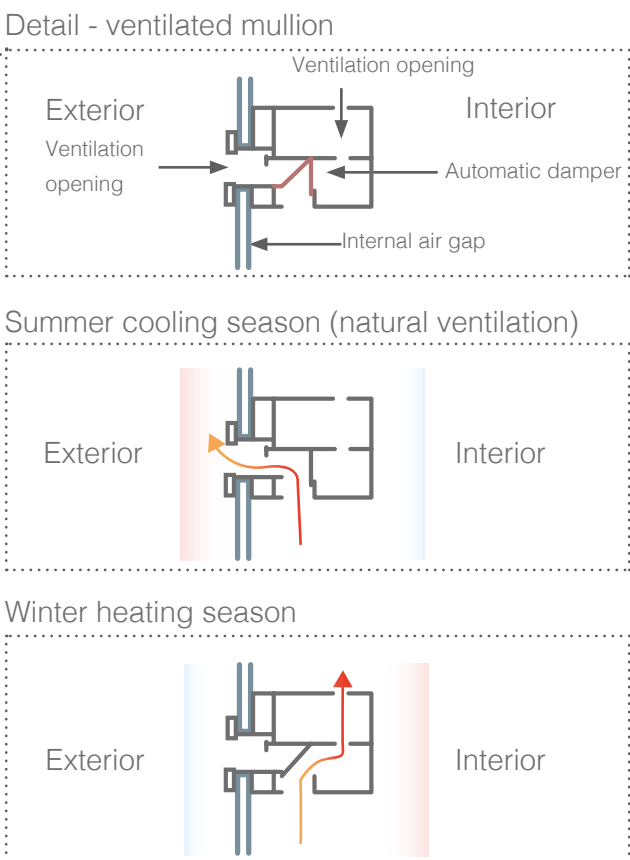
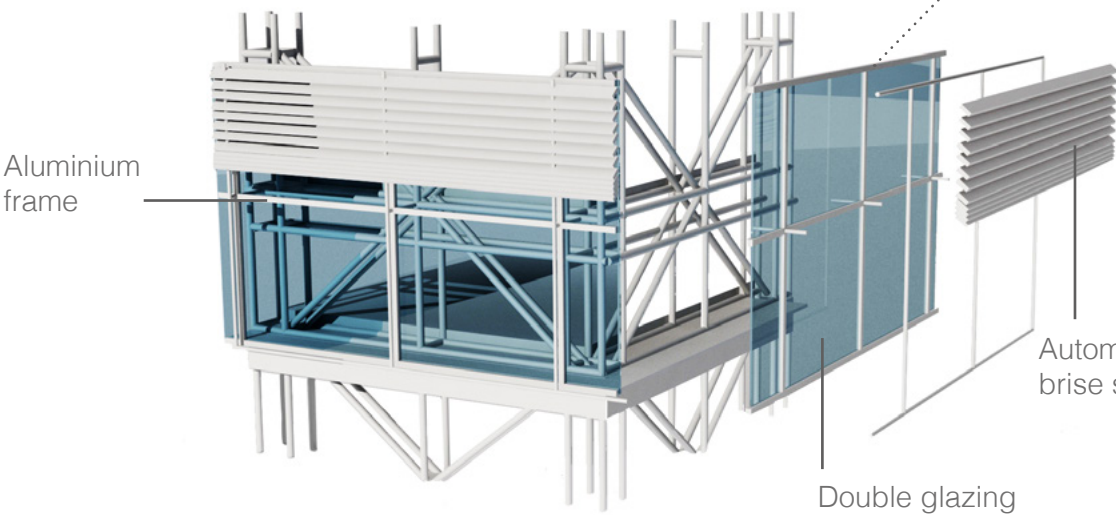


First floor plan +4.0 m scale 1.250

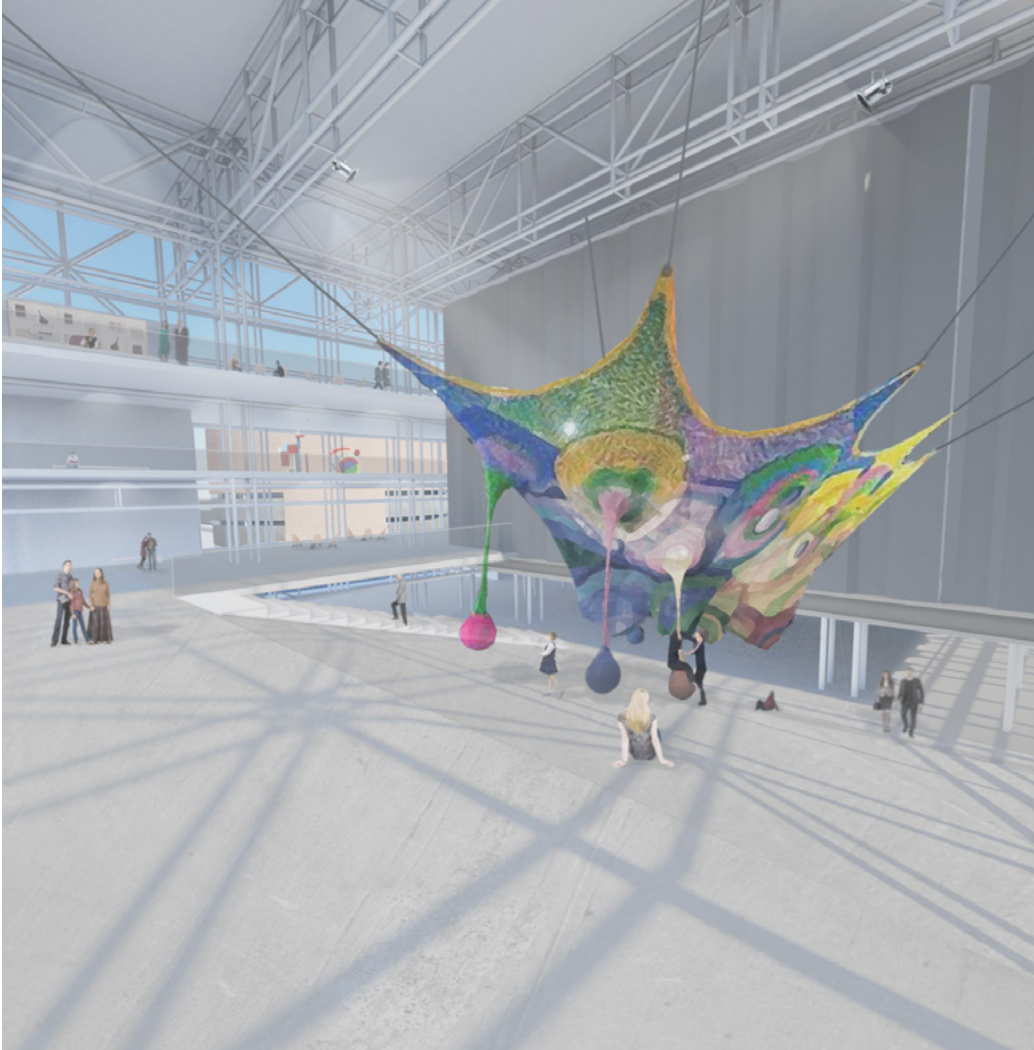
- A1 Cloakroom
- B1 Workshop
- C1 Changing room
- D1 Stockroom
- E1 Toilets
- F1 Conference room
- G1 Office



Climate-adaptive building shell

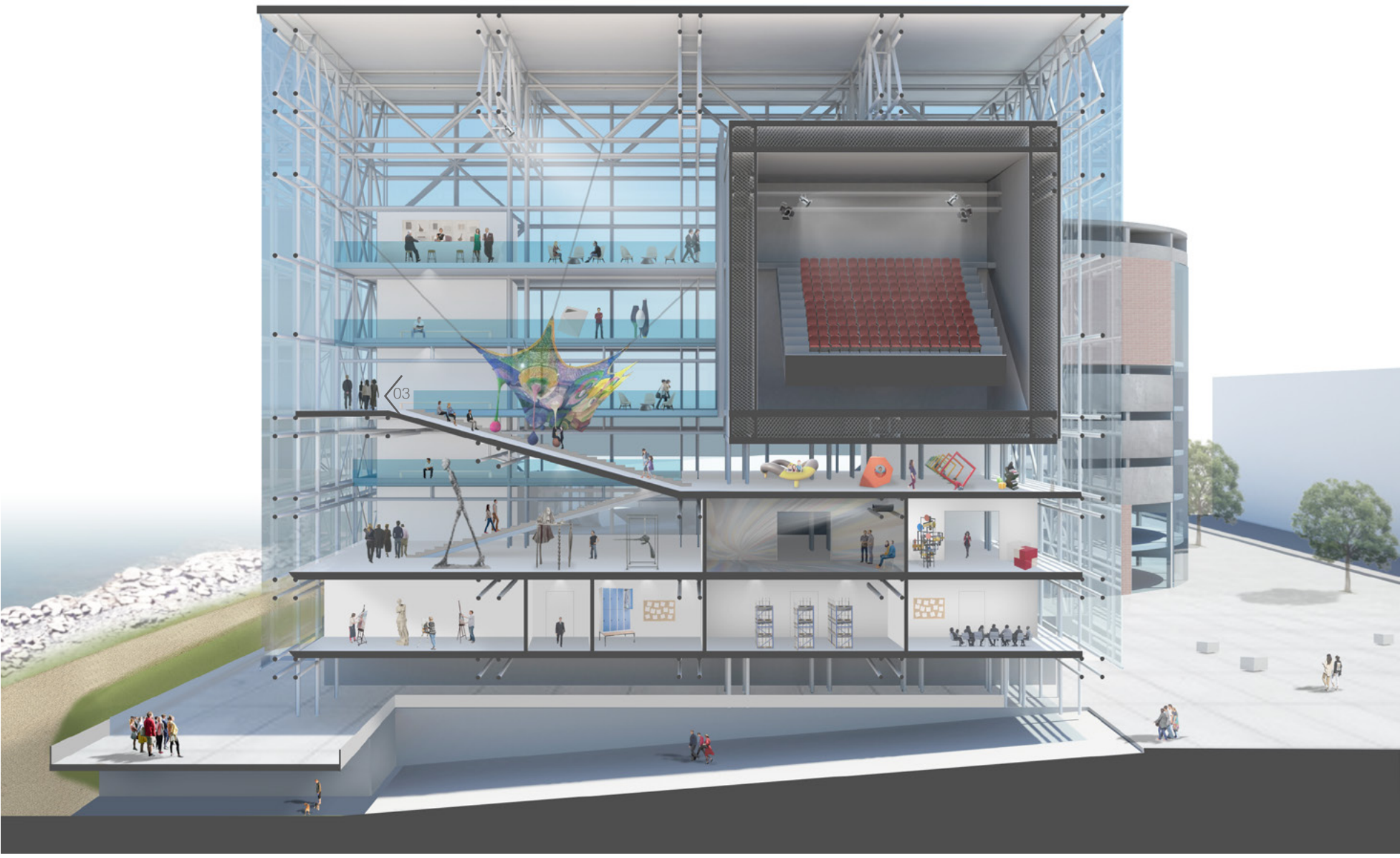


Visualization 03





Section B.B. scale 1.250

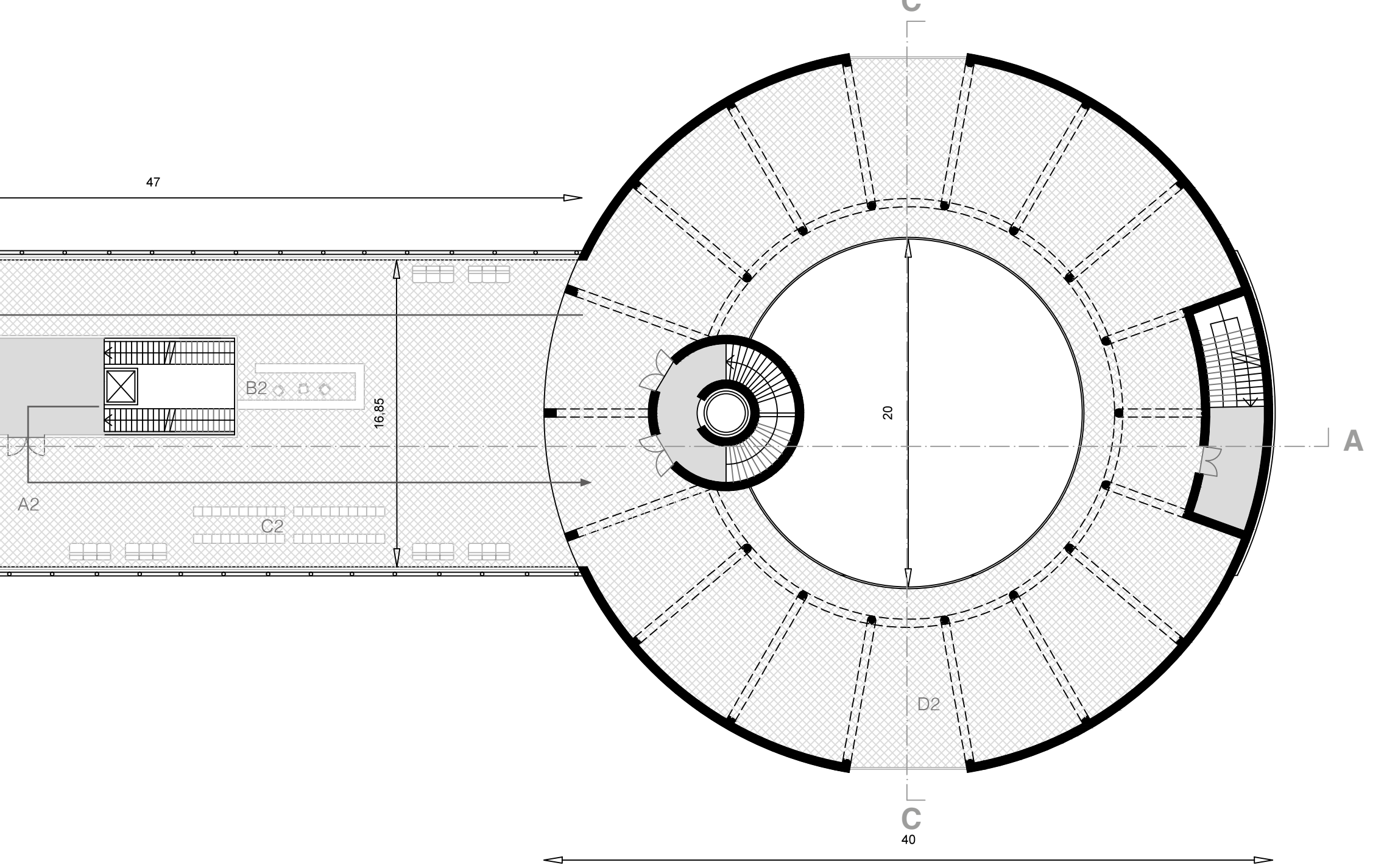
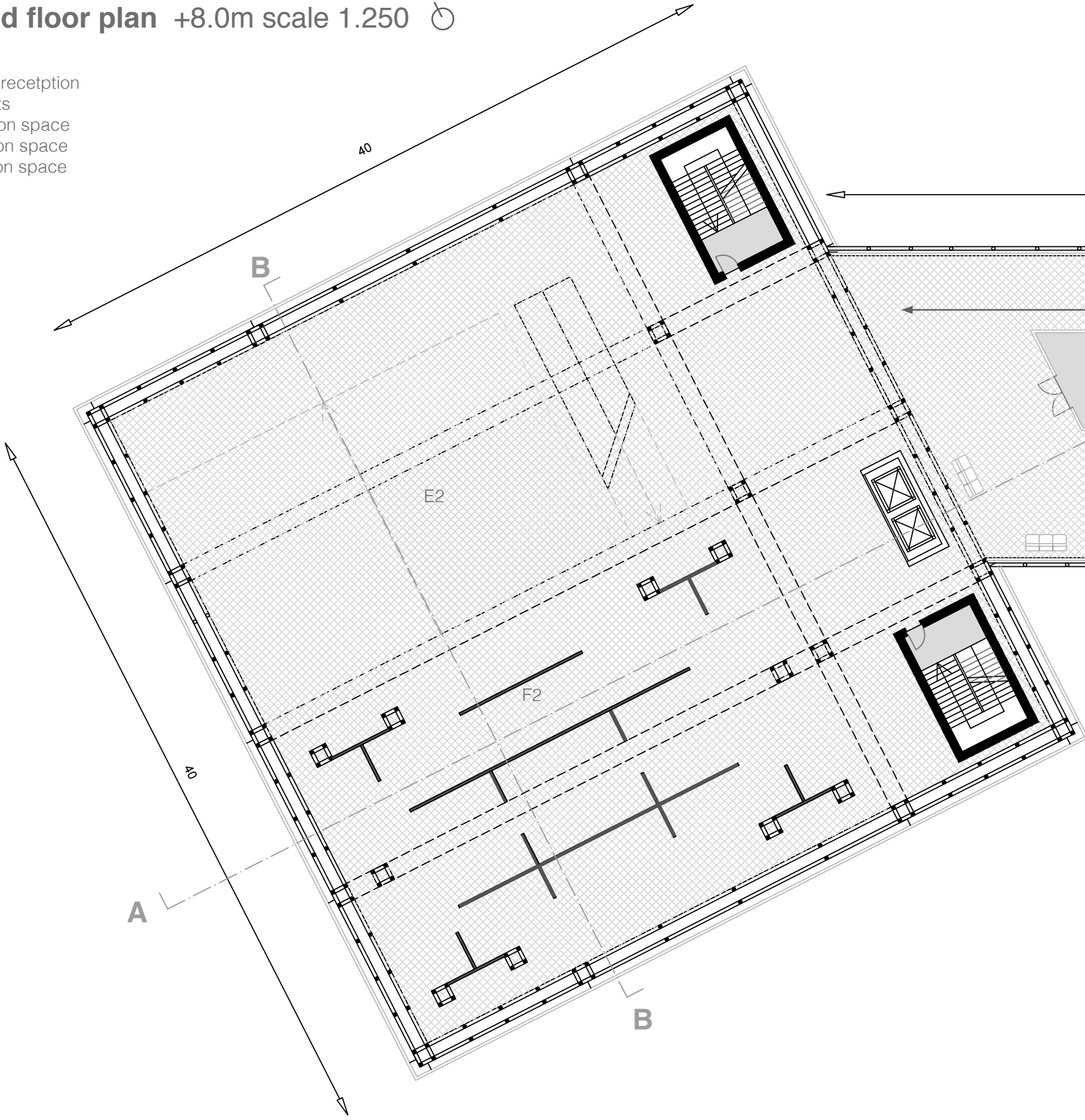


Section C.C. scale 1.250



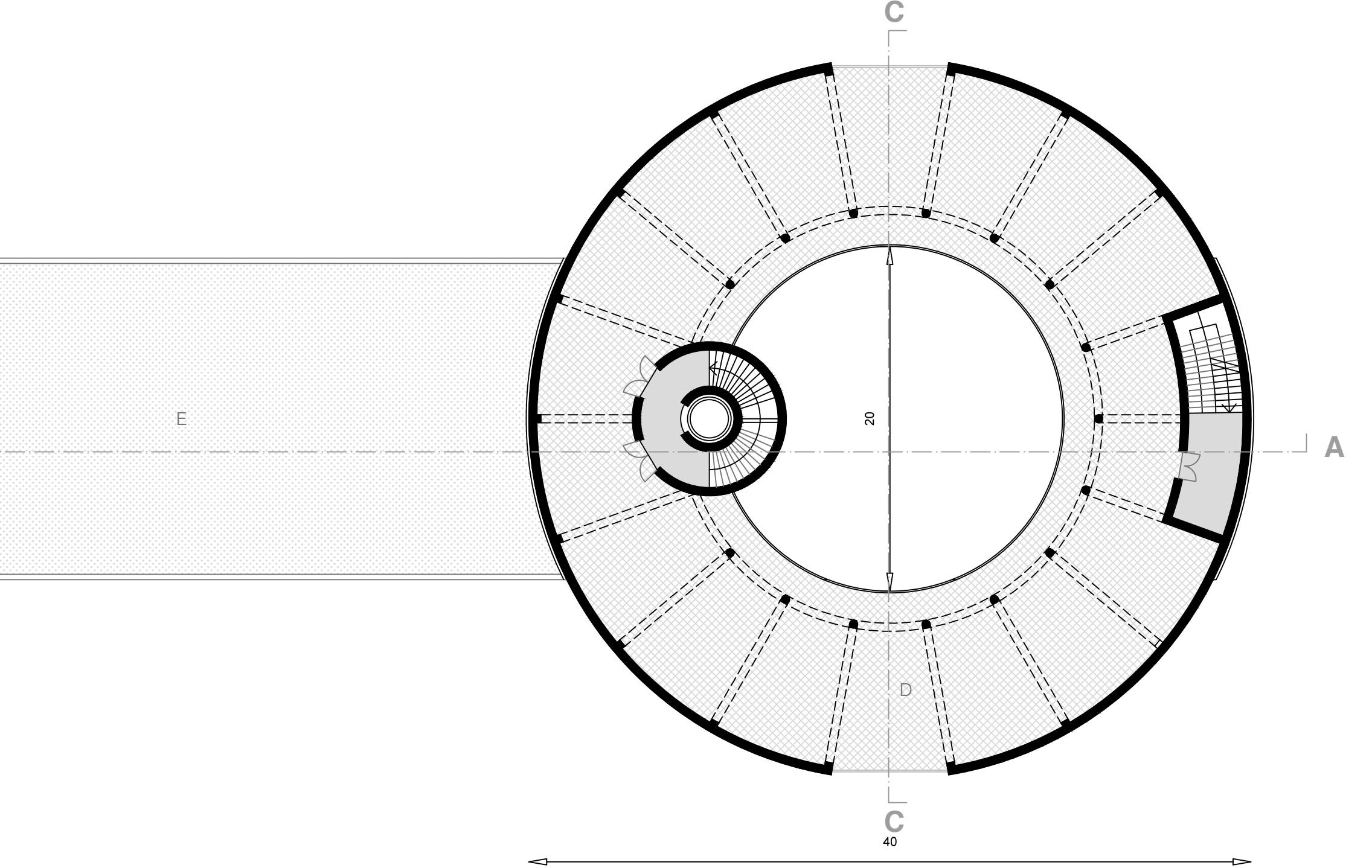
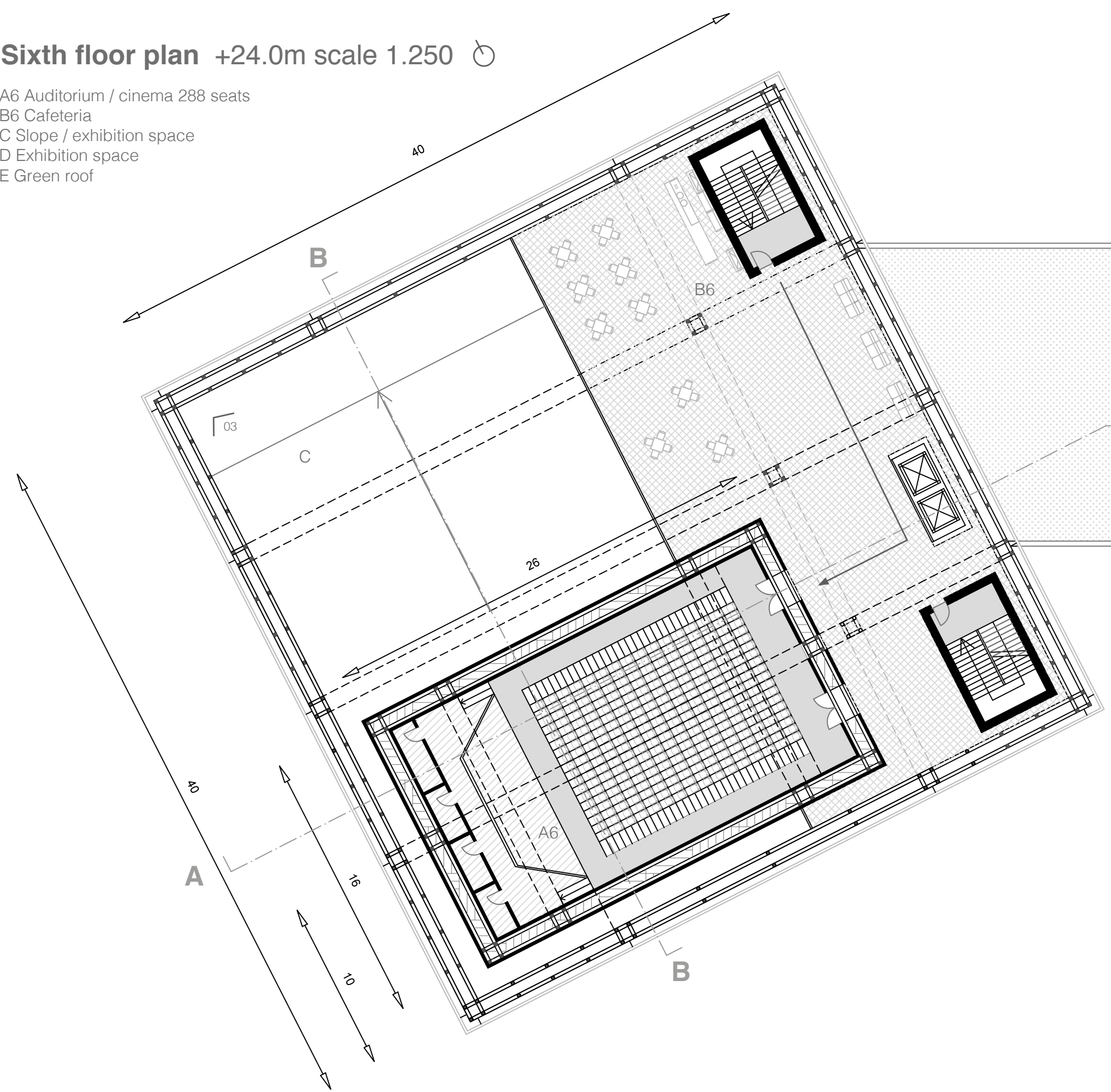
Second floor plan +8.0m scale 1.250

- A2 Foyer
- B2 Ticket / reception
- C2 Cabinets
- D2 Exhibition space
- E2 Exhibition space
- F2 Exhibition space

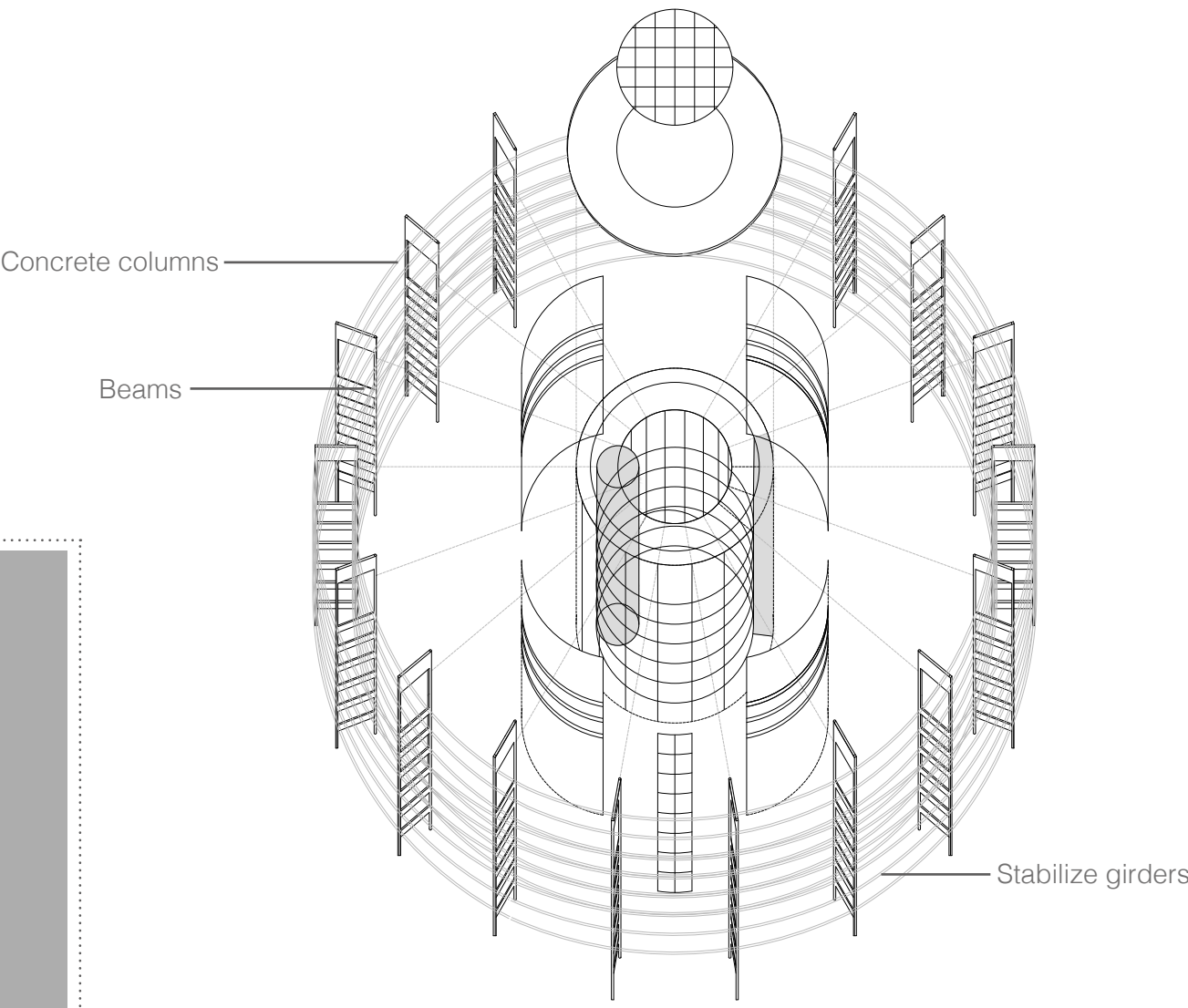
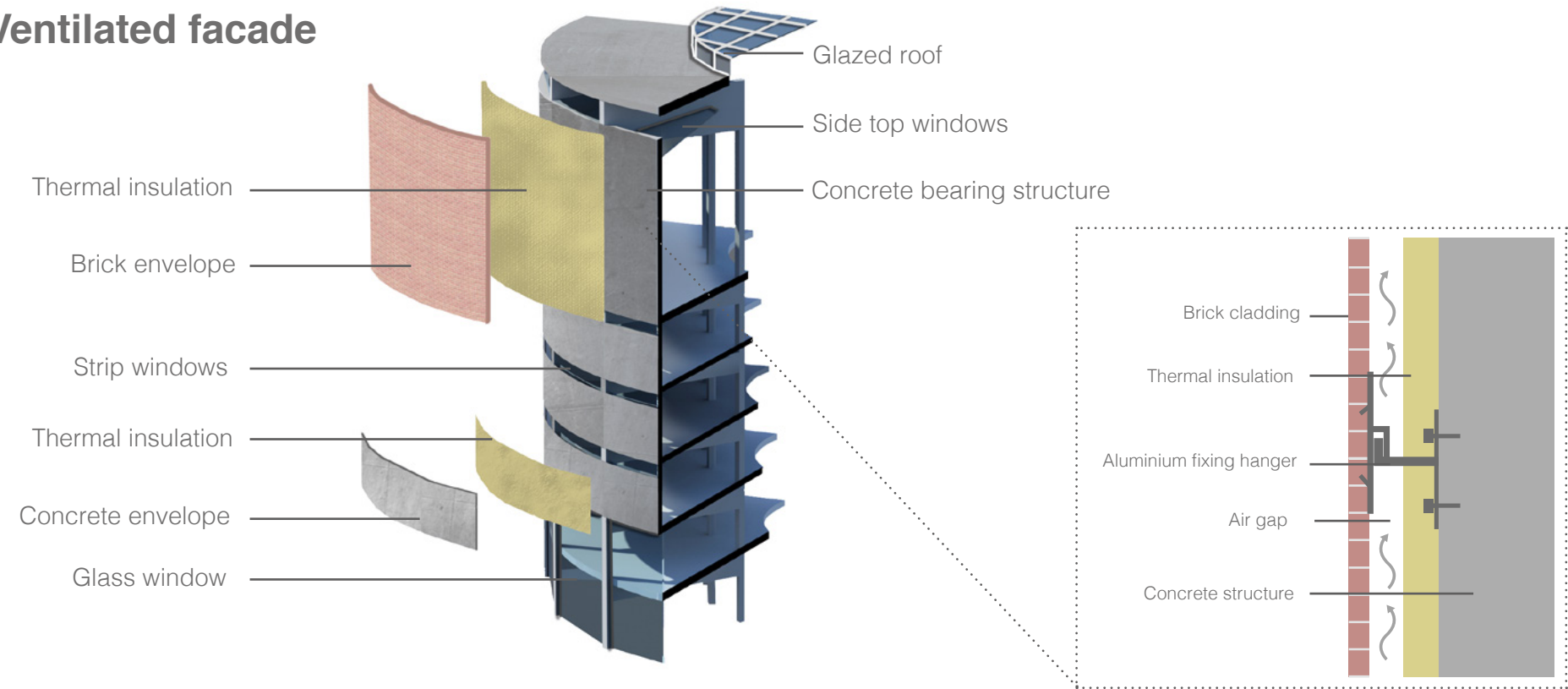


Sixth floor plan +24.0m scale 1.250

- A6 Auditorium / cinema 288 seats
- B6 Cafeteria
- C Slope / exhibition space
- D Exhibition space
- E Green roof



Ventilated facade



Visualization 04

